

COMANCHE PEAK STEAM ELECTRIC STATION

SECURITY TRAINING AND QUALIFICATION PLAN


SECURITY RELATED MATERIAL

TU ELECTRIC

TEXAS UTILITIES ELECTRIC COMPANY
COMANCHE PEAK STEAM ELECTRIC STATION
UNITS 1 AND 2

SECURITY
TRAINING AND QUALIFICATION PLAN
REVISION 6

EFFECTIVE DATE 11-8-90

APPROVED BY: 
VICE PRESIDENT, NUCLEAR OPERATIONS

DATE: 11-6-90

TRAINING and QUALIFICATION PLAN

REVISION 6

TABLE OF CONTENTS

	PAGE
INTRODUCTION	1
1.0 EMPLOYMENT SUITABILITY AND QUALIFICATION	2
1.1 Suitability	2
1.2 Physical and Mental Qualifications	2
1.2.1 Physical Qualifications	2
1.2.1.1 General Physical Qualifications	2
1.2.1.2 Physical Examination	2
1.2.1.3 Armed Personnel Requirements	3
1.2.2 Mental Qualifications	4
1.2.2.1 General Mental Qualifications	5
1.2.2.2 Professional Mental Examination	5
1.2.2.3 Continued Observation	5
1.3 Physical Fitness Qualification	6
1.4 Contract Security Personnel	6
1.5 Annual Physical Requalification	6
1.6 Documentation	6
2.0 TRAINING AND QUALIFICATION	6
2.1 Training Requirements	7
2.2 Qualification Requirements	7
2.2.1 Task Identification Summary	7
2.2.2 Tasks, Conditions, and Standards	14
2.2.3 Duty Qualification	26
2.2.4 Individual Qualification Records	26
2.2.5 Test Materials	26

TRAINING and QUALIFICATION PLAN

REVISION 6

	PAGE
2.3 Contract Personnel	26
2.4 Requalification	26
3.0 WEAPONS TRAINING	27
3.1 Weapons Familiarity and Proficiency	27
3.2 Use of Force	27
4.0 WEAPONS QUALIFICATION AND REQUALIFICATION	27
5.0 CROWD CONTROL TRAINING	29
6.0 SECURITY EQUIPMENT	29
7.0 EMERGENCY RESPONSE ACCESS CONTROL TRAINING	29
GLOSSARY OF TERMS	APPENDIX A
IMPLEMENTATION SCHEDULE	APPENDIX B

TRAINING and QUALIFICATION PLAN

REVISION 6

PAGE 1

INTRODUCTION

This Plan states the policies and commitments of Texas Utilities Electric Company (TU Electric) to the requirements of 10CFR73.55(b) and 10CFR73, Appendix B for the Comanche Peak Steam Electric Station (CPSES). As such, it outlines the measures to be taken by TU Electric to assure that members of the CPSES Security Organization are suitable, trained, equipped, and qualified to perform their assigned security job duties in the protection of the Station against radiological sabotage, as indicated by the threat level specified in 10CFR73.1(a)(1).

The objective of the Plan is to provide a mechanism by which members of the Security Organization can be trained, equipped, and qualified to assure that they will perform their duties and carry out their responsibilities in the most efficient and effective manner.

This Plan is applicable to contractor security personnel who make up the CPSES Security Organization. This Plan does not imply a training program for security management. Security management personnel include the Security Manager or other TU Electric management personnel who may have general responsibility for supervising the actions of the Security Organization.

TRAINING and QUALIFICATION PLAN

REVISION 6

PAGE 2

1.0 EMPLOYMENT SUITABILITY AND QUALIFICATION

This Section outlines the suitability, as well as physical and mental requirements that must be met by all members of the CPSES Security Organization and outlines documentation and requalification requirements relating to such criteria.

1.1 Suitability

Subject to verification through a background investigation, prior to employment and assignment on the CPSES Security Organization, an individual must:

- ° Possess a high school diploma or the equivalent.
- ° Have no felony convictions involving the use of a weapon and have no felony convictions that reflect on the individual's reliability.
- ° Have attained the age of twenty-one for assignment in an armed capacity and have attained the age of eighteen for assignment in an unarmed capacity.

1.2 Physical and Mental Qualifications

The criteria indicated below must be met prior to employment or assignment on the CPSES Security Organization.

1.2.1 Physical Qualifications

1.2.1.1 General Physical Qualifications

Individuals assigned to the CPSES Security Organization shall have no physical weaknesses or abnormalities that would adversely affect their performance of assigned security job duties. In addition, Security supervisory personnel observe members of the Security Organization for any indications of physical weaknesses or abnormalities that may adversely affect daily job performance.

1.2.1.2 Physical Examination

Prior to assignment to the Security Organization, all personnel shall successfully pass a physical examination to verify that the applicant meets the requirements of Section 1.2.1.1. CAS/SAS operators and armed personnel shall successfully pass a physical examination which may be administered by a licensed health professional with the final attestation made by a licensed physician. In addition, armed personnel shall meet the

physical requirements specified in Section 1.2.1.3. When continued observation by supervisory personnel reveals a possible physical defect, the individual is referred to a licensed physician who verifies the presence or absence of such defect. All examinations provided under this Section are designed to measure physical ability to perform assigned security duties.

1.2.1.3 Armed Personnel Requirements

Armed personnel meet the following physical requirements:

° Vision

For each individual, distant visual acuity in each eye shall be correctable to 20/30 (Snellen or equivalent) in the better eye and 20/40 in the other eye with eyeglasses or contact lenses. If uncorrected distance vision is not at least 20/40 in the better eye, the individual has available an extra pair of corrective lenses. Near visual acuity, corrected or uncorrected, shall be at least 20/40 in the better eye. Field of vision must be at least 70° horizontal meridian in each eye. The ability to distinguish red, green, and yellow colors is required. Loss of vision in one eye is disqualifying. Glaucoma is disqualifying, unless controlled by acceptable medical or surgical means, provided such medications as may be used for controlling glaucoma do not cause undesirable side effects which adversely affect the individual's ability to perform assigned security duties, and provided the visual acuity and field of vision requirements stated above are met. On-the-job evaluation is used for individuals who exhibit a mild color vision defect.

Where corrective eyeglasses are worn, they are of the safety type glass.

The use of corrective eyeglasses or contact lenses shall not interfere with an individual's ability to effectively perform assigned security duties.

° Hearing

Individuals shall have no hearing loss in the better ear greater than 30 decibels average at 500 Hz, 1000 Hz, and 2000 Hz, with no level greater than 40 decibels at any one frequency (by ISO 389, "Standard Reference Zero for the Calibration of Purtone Audiometer" [1975] or ANSI S3.6 - 1969 [R. 1973] "Specifications for Audiometers").

A hearing aid is acceptable provided suitable testing procedures demonstrate auditory acuity equivalent to the above stated requirements.

The use of a hearing aid shall not decrease the effective performance of the individual's assigned security duties.

° Diseases

Individuals shall have no established medical history or medical diagnosis of epilepsy or diabetes, or, when such condition exists, the individual must provide medical evidence that the condition can be controlled with proper medication so that the individual will not lapse into an unconscious state while performing assigned security duties.

° Addiction

Individuals shall have no established medical history or medical diagnosis of habitual alcoholism or drug addiction; or, where such a condition has existed, the individual shall provide certified documentation of having completed a rehabilitation program which would give a reasonable degree of confidence that the individual would be capable of performing assigned security duties.

° Other Physical Requirements

An individual who has been incapacitated due to a serious illness, injury, disease, or operation, which could interfere with the effective performance of assigned security duties, shall, prior to resumption of such duties, provide medical evidence of recovery and ability to perform such security duties.

1.2.2.1 General Mental Qualifications

Individuals whose security tasks and job duties are directly associated with the effective implementation of the CPSES Physical Security and Safeguards Contingency Plans shall demonstrate, prior to assignment, mental alertness and the capability to exercise good judgement, implement instructions, assimilate assigned security tasks, and possess the acuity of senses and ability of expression sufficient to permit accurate communication by written, spoken, audible, visible, or other signals required by assigned security duties.

1.2.2.2 Professional Mental Examination

Prior to employment or assignment on the CPSES Security Organization, armed individuals and CAS/SAS Operators shall meet the requirements of Section 1.2.2.1 and have no emotional instability that would interfere with the effective performance of assigned security duties. The latter determination is made by a licensed psychologist, psychiatrist, physician, or other person trained to identify emotional instability through an administered psychological test.

1.2.2.3 Continued Observation

Security supervisory personnel observe members of the Security Organization for indications of emotional instability in the course of performing assigned security duties. Identification of emotional instability by a responsible supervisor is subject to verification by a person trained to identify emotional instability through the use of an administered psychological test. If such test and examiner interpretation detect no condition that would interfere with the performance of assigned security duties, the examined individual is permitted to continue assigned duties.

1.3 Physical Fitness Qualification

Subject to a medical examination as prescribed by Section 1.2.1.2 conducted within the preceding 60 days, and to a determination and written certification by a licensed physician that there are no medical contraindications to participation by the individual, all armed personnel take a job related physical fitness test, prior to employment or assignment on the CPSES Security Organization. The test is performed within a specific time limit and is designed to measure the individual's ability to perform job related functions under conditions which involve stress, physical exertion, and exposure to the elements as they pertain to assigned security duties. The physical fitness qualification of each armed security officer shall be documented and attested to by the TU Electric Security Manager or an appropriate TU Electric Supervisor.

1.4 Contract Security Personnel

Contract security personnel employed on the CPSES Security Organization are required to meet the suitability, physical, and mental requirements appropriate to their assigned duties, as indicated in this Plan.

1.5 Annual Physical Examination

At least every 12 months, CAS/SAS Operators and armed Security personnel shall pass a physical examination that certifies the individuals meet the general physical qualifications of Section 1.2.1.1 of this Plan. The physical examination is administered by a licensed physician. Armed personnel shall meet the vision and hearing requirements of Section 1.2.1.3 and the physical fitness requirements of Section 1.3 at least once every 12 months.

1.6 Documentation

The results of suitability, physical, and mental qualifications, as prescribed in Section 1.0 of this Plan, are certified by the TU Electric Security Manager or other designated TU Electric personnel after appropriate review. Such certifications are retained on site for at least three (3) years.

2.0 TRAINING AND QUALIFICATION

This Section outlines the training and qualification program followed by CPSES for members of the Security Organization to assure that all Security personnel are capable of performing their assigned duties during normal and contingency operations. Crucial tasks necessary for implementation of the CPSES Physical Security and Safeguards Contingency Plans are indicated, conditions and standards for each task are specified, and crucial tasks are categorized by position assignment for the Security Organization.

TRAINING and QUALIFICATION PLAN

REVISION 6

PAGE 7

2.1 Training Requirements

Prior to assignment on the CPSES Security Organization, each individual who must perform security related crucial tasks, as identified in Section 2.2.1 is trained to perform such tasks associated with the individual's duty assignment. The training program includes an entry level training module, scheduled retraining, and immediate retraining when necessary.

2.2 Qualification Requirements

Each individual on the Security Organization is required to initially qualify for his assigned duty position in accordance with this Section. Matrices that follow identify crucial tasks cross-referenced to the applicable portions of the CPSES Physical Security and Safeguards Contingency Plans, shift positions indicating who must perform the indicated crucial tasks, and work conditions and minimum standards for performance of these tasks. The TU Electric Security Manager attests to the fact that the training requirements have been met for each individual.

2.2.1 Task Identification Summary

The matrix that follows lists all crucial tasks required to implement the CPSES Physical Security and Safeguards Contingency Plans and cross references such tasks to their respective source(s). The notations "SP" and "SCP" on the matrix indicate reference to the CPSES Physical Security Plan and Safeguards Contingency Plan respectively. The following matrix also cross-references all crucial tasks to position assignments on the CPSES Security Organization, indicating which organization elements shall be qualified to perform the indicated tasks.

TRAINING and QUALIFICATION PLAN

REVISION 6

PAGE 8

CRUCIAL TASKS			TASK QUALIFICATION BY DUTY POSITION*			
NO.	DESCRIPTION	SOURCES	Security Supervisors	Security Officers (Armed)	Associate Security Officers	CAS/SAS Operators
1	Obtain situation briefings & instructions, deploy, coordinate, and instruct the Security Organization during Contingency situations.	SCP - Section 4.0; Threat Events A1, B1, and D2	X			X
2	Verify identification and access authorization, and prepare visitor log.	SP - Chapters 3 and 6.	X	X	X	
3	Conduct search using a portal metal/explosives detector.	SP - Chapters 6, 7 and 13.	X	X	X	
4	Conduct search using a hand-held metal detector.	SP - Chapters 6, 7 and 13.	X	X	X	
5	Conduct hands-on search of personnel.	SP - Chapters 3 and 6. SCP - Section 3.7.3.	X	X	X	
6	Monitor and control personnel access portal to Protected Area.	SP - Chapters 4 and 6.	X	X	X	

Applies only to members of the Contract Security Organization

TRAINING and QUALIFICATION PLAN

REVISION 6

PAGE 9

CRUCIAL TASKS			TASK QUALIFICATION BY DUTY POSITION*			
NO.	DESCRIPTION	SOURCES	Security Supervisors	Security Officers(Armed)	Associate Security Officers	CAS/SAS Operators
7	Monitor and control personnel access to Vital Area.	SP - Chapters 6 and 11. SCP - Threat Event M4.	X	X	X	
8	Conduct vehicle search and process drivers/vehicles into the Protected Area.	SP - Chapters 4 and 6.	X	X		
9	Escort and control non-licensee designated vehicles.	SP - Chapters 4 and 6.	X	X		
10	Control vehicle access to Protected and Vital Areas.	SP - Chapters 4 and 6.	X	X	X	
11	Conduct physical search of property.	SP - Chapter 6.	X	X	X	
12	Conduct search using package X-ray examination device.	SP - Chapters 6, 7 and 13.	X	X	X	

*Applies only to members of the Contract Security Organization

TRAINING and QUALIFICATION PLAN

REVISION 6

PAGE 10

CRUCIAL TASKS			TASK QUALIFICATION BY DUTY POSITION*			
NO.	DESCRIPTION	SOURCES	Security Supervisors	Security Officers (Armed)	Associate Security Officers	CAS/SAS Operators
13	Patrol Protected and Vital Areas.	SP - Chapters 2, 4, 13 and 14.	X	X	X	
14	Escort personnel.	SP - Chapters 6 and 11.	X	X	X	
15	Operate a portable radio.	SP - Chapters 9 and 13. SCP - Sections 3.3.1 and 3.4.2.	X	X	X	
16	Operate a base station radio and Security communications equipment.	SP - Chapters 9 and 13. SCP - Sections 3.1.2, 3.3.1, 3.4.2, and 4.0.	X			X
17	Maintain surveillance and assess alarm utilizing CCTV equipment.	SP - Chapters 4, 7, and 8. SCP - Threat Events I1, I2, M4, and M5.	X			X
18	Operate CAS/SAS Console, monitor CRT, and acknowledge alarm indications.	SP - Chapters 7, 8 and 14. SCP - Threat Events A2, D2, I1, and I2.	X			X

* Applies only to members of the Contract Security Organization

TRAINING and QUALIFICATION PLAN

REVISION 6

PAGE 11

CRUCIAL TASKS			TASK QUALIFICATION BY DUTY POSITION*			
NO.	DESCRIPTION	SOURCES	Security Supervisors	Security Officers (Armed)	Associate Security Officers	CAS/SAS Operators
19	Verify and update access authorizations for Protected and Vital Areas.	SP - Chapters 6, 8 and 14.	X			X
20	Monitor SAS CRT and assume command of the Security System.	SP - Chapters 7 and 8. SCP - Threat Events I1, M2 and M4.	X			X
21	Engage targets with a .38 caliber revolver.	SP - Chapters 2 and 10. SCP - Sections 3.5.4 and 3.6.3; Threat Events A3, H1, H2, and S2.	X	X		
22	Engage targets with a 12 gauge police riot (cylinder bore) shotgun.	SP - Chapters 2 and 10. SCP - Sections 3.5.4 and 3.6.3; Threat Events A3, H1, H2 and S2.	X	X		
23	Utilize a protective mask.	SCP - Section 3.6.3.c and Threat Event E1.	X	X		
24	Utilize a nightstick.	SP - Chapter 2 SCP - Section 3.6.3.c and Threat Event D2.	X	X		

Applies only to members of the Contract Security Organization

TRAINING and QUALIFICATION PLAN

REVISION 6

PAGE 12

CRUCIAL TASKS			TASK QUALIFICATION BY DUTY POSITION*			
NO.	DESCRIPTION	SOURCES	Security Supervisors	Security Officers (Armed)	Associate Security Officers	CAS/SAS Operators
25	Deploy to investigate, intercept, arrest and detain intruders.	SP - Chapters 7 and 10. SCP - Section 3.7 and 4.0; Threat Events I1, I2, I3, A3, M2 and S1.	X	X	X	
26	Execute tactical response to an attack, and contain adversaries and isolate from Vital Areas.	SP - Chapter 10. SCP - Threat Events A2, A3, H1, H2, I2 and S2.	X	X		
27	Conduct search for sabotage device and evacuate and isolate an area.	SCP - Threat Event B1, B2, H2, S1 and S2.	X	X	X	
28	Assess cause of alarm.	SP - Chapter 7. SCP - Threat Events I1 and I2.	X	X	X	
29	Test and use alternate means of communication.	SP - Chapter 10. SCP - Threat Event M1.	X			X
30	Conduct search for missing member of the Security Organization.	SCP - Threat Event M2.	X	X	X	

Applies only to members of the Contract Security Organization

TRAINING and QUALIFICATION PLAN

REVISION 6

PAGE 13

CRUCIAL TASKS

TASK QUALIFICATION BY DUTY POSITION*

NO.	DESCRIPTION	SOURCES	TASK QUALIFICATION BY DUTY POSITION*			
			Security Supervisors	Security Officers(Armed)	Associate Security Officers	CAS/SAS Operators
31	Conduct surveillance to compensate for alarm system degradation.	SP - Chapter 10. SCR - Threat Event M4 and M5.	X	X	X	
32	Perform alarm and annunciator tests.	SP - Chapters 13.	X			X

Applies only to members of the Contract Security Organization

TRAINING and QUALIFICATION PLAN

REVISION 6

PAGE 14

2.2.2 Tasks, Conditions, and Standards

The section that follows describes the crucial task conditions and specified minimum work standards upon which the CPSES Security Training and Qualification Program is based. Prior to assignment on the Security Organization, individuals shall successfully qualify by demonstrating proficiency under the conditions specified in accordance with the indicated standards, for applicable tasks associated with the individual's job assignment.

TRAINING and QUALIFICATION PLAN

REVISION 6

PAGE 15

TASK #1

Obtain Situation Briefings and Instructions, Deploy, Coordinate, and Instruct the Security Organization During Contingency Situations

CONDITIONS: Given the Safeguards Contingency Plan implementing procedures, a situation cue as described in the Plan, and the requirements to obtain simulated situation and instruction from LLEA, Security Organization management and/or Plant management, provide properly trained and equipped Security personnel to protect the site.

STANDARDS: Identify individuals who must be contacted for the Contingency. Implement Safeguards Contingency Plan procedures for that event by instructing, directing, deploying and coordinating individuals and teams as required by procedures.

TASK #2

Verify Identification and Access Authorization,
and Prepare a Visitor Log

CONDITIONS: Given an individual requesting access to the Protected Area at the Primary or Alternate Access Point (PAP or AAP), blank forms, appropriate Security Procedures, and the requirement to process personnel for entry into the Protected Area and to complete a Visitor Log.

STANDARDS: Verify identification, authorization, and need for entry; process and brief visitors or others not authorized unescorted access and assure an escort is provided, if required. Ensure all appropriate sections of the Visitor Log are completed accurately and in a clear, legible manner.

TASK #3

Conduct Search Using a Portal Metal/Explosives Detector

CONDITIONS: Given an operational portal metal/explosives detector located in the PAP or AAP search passageway and the requirement to process an individual for weapons and explosives prior to entry into the Protected Area.

STANDARDS: Prepare for operation and use a portal metal/explosives detector to conduct a search of an individual, responding to any alarm indications as required.

TRAINING and QUALIFICATION PLAN

SION 6

PA. 16

TASK #4

Conduct Search Using a Hand-held Metal Detector

CONDITIONS: Given an operational hand-held metal detector at the PAP or AAP search area and the requirements to search an individual for weapons prior to entry into the Protected Area.

STANDARDS: Prepare for operation and use a hand-held metal detector to conduct a search, responding to every alarm annunciation until all metal sources have been identified.

TASK #5

Conduct Hands-On Search of Personnel

CONDITIONS: Given an individual requesting access to the Protected Area and the requirement to search the individual for weapons, explosives, or incendiary devices.

STANDARDS: Conduct a hands-on search of the individual to discover any suspicious objects, detect the presence of any weapons, explosives, or incendiary devices, deny entry to the individual if appropriate, and make any necessary notifications.

TASK #6

Monitor and Control Personnel Access Portal to Protected Area

CONDITIONS: Given a post at the PAP or AAP and the requirement to monitor and control pedestrian ingress and egress to the Protected Area.

STANDARDS: Observe the search, verify access authorization and identification, issue key card badges; recover key card badges and dosimeters before egress; and monitor the entry/exit turnstiles to permit or deny entry/exit.

TRAINING and QUALIFICATION PLAN

REVISION 6

PAGE 17

TASK #7

Monitor and Control Personnel Access to Vital Areas

CONDITIONS: Given a post at a personnel access point to a Vital Area and the requirement to monitor and control pedestrian ingress and egress.

STANDARDS: Verify identity and access authorization of the individual(s) seeking ingress and permit or deny entry accordingly. Communicate required information to the CAS/SAS Operator or record on the appropriate form.

TASK #8

Process Drivers/ Vehicles into the Protected Area
and Conduct Vehicle Search

CONDITIONS: Given a vehicle and driver seeking entry and the requirement to search the vehicle for weapons, explosives, incendiary devices, or unauthorized individuals, and to process the vehicle and driver into the protected area.

STANDARDS: Verify identification and access authorization; direct driver/passengers to a personnel access control point, conduct vehicle search that includes an inspection of the cab, engine compartment, cargo area, undercarriage, as accessible, and make necessary notifications.

TASK #9

Escort and Control Non-Licensee Designated Vehicles

CONDITIONS: Given a non-licensee designated vehicle granted access to the Protected Area and the requirement to escort and control the vehicle.

STANDARDS: Demonstrate the ability to escort the vehicle, maintain surveillance of the occupants and the vehicle, prevent unauthorized material from being loaded into or unloaded from the vehicle, ensure that the vehicle is secured (locked) if it is unattended, and report any security violations to the CAS/SAS.

TASK #10

Control Vehicle Access to Protected and Vital Areas

CONDITIONS: Given vehicles searched and processed for access into the Protected or a Vital Area and the requirement to control such vehicle access.

STANDARDS: For vehicles seeking entry into the Protected Area, verify search and access processing of the vehicle and driver, ensure the presence of an escort if required, and operate motor-controlled gate. For vehicles entering non-motor controlled gates or Vital Area portals, establish an observation post at the portal to maintain surveillance of the area, reacting to unauthorized activity and reporting any security violations to the CAS.

TASK #11

Conduct Physical Search of Property

CONDITIONS: Given a position at the PAP or AAP and the requirement to process and search packages, materials, or deliveries before they are permitted inside the Protected Area.

STANDARD: Conduct an inspection in accordance with Security Procedures, verifying material access authorization and identification, identifying those materials exempt from search, and conducting a search for contraband or unauthorized material.

TASK #12

Conduct Search Using Package X-Ray Examination Device

CONDITIONS: Given hand-carried or other small items to be taken into the Protected Area, an operational package X-ray examination device, and the requirement to examine the items for weapons, explosives, or incendiary devices prior to permitting them to be taken inside the Protected Area.

STANDARDS: Utilizing the appropriate controls and the viewing screen, process the item to identify weapons, explosives, or incendiary devices and demonstrate correct procedures for responding to contraband discoveries.

TASK #13

Patrol Protected and Vital Areas

CONDITIONS: Given designated patrol area and the requirement to conduct a patrol of the Protected and Vital Areas.

STANDARDS: Conduct a patrol to inspect and observe designated areas within the Protected and Vital Areas for suspicious events, persons or activities, degradation or tampering of barriers, alarm devices, CCTV or lighting, and make appropriate reports to CAS.

TASK #14

Escort Personnel

CONDITIONS: Given an escort assignment and the requirement to escort visitors inside the Protected Area.

STANDARDS: Demonstrate the ability to escort and control the personnel within designated areas, maintain continuous surveillance, react to unauthorized activity, and report any security violations to the CAS operator.

TASK #15

Operate a Portable Radio

CONDITIONS: Given an operational portable radio on a given security frequency, a call sign, and the requirement to transmit or receive an oral message from a designated station.

STANDARDS: Demonstrate the ability to transmit and receive messages to and from the appropriate net station using correct procedures.

TRAINING and QUALIFICATION PLAN

REVISION 6

PAGE 20

TASK #16

Operate the Base Station Radio and
Security Communications Equipment

CONDITIONS: Given the CAS or SAS console communications equipment and the requirement to establish communications with all operational elements of the Security Organization.

STANDARDS: Select the proper communications equipment on the appropriate frequency as required, conduct a test of the equipment utilizing correct communications procedure, and contact designated fixed posts and/or patrols, recording the check as required.

TASK #17

Maintain Surveillance and Assess Alarm Utilizing CCTV Equipment

CONDITIONS: Given an operational CAS/SAS console with CCTV and radio communications equipment, alarm indications, and the requirement to assess a Protected/Vital Area alarm and dispatch a security officer to investigate, if required.

STANDARDS: Utilizing the CCTV system, identify the cause and location of each alarm, dispatch a security officer to the location of the alarm if assessment cannot be made by CCTV, and record the required information.

TASK #18

Operate CAS/SAS Console, Monitor CRT, and Acknowledge
Alarm Indications

CONDITIONS: Given an operational alarm console and the requirement to acknowledge alarms and dispatch security officer, if required.

STANDARDS: Respond to the alarm display, identify the type of alarm, dispatch a security officer to assess any Vital Area alarms, clear the alarm, record required information, and implement compensatory measures should the alarm system become inoperable.

TRAINING and QUALIFICATION PLAN

REVISION 6

PAGE 21

TASK #19

Verify and Update Access Authorizations for
Protected and Vital Areas

CONDITIONS: Given an operational security computer terminal, employee data input or change authorization forms, the use of the operator's manual, and the requirement to verify and update the access authorization list.

STANDARDS: Demonstrate the ability to enter, change and delete information in the employee data base and verify the accuracy of the changes.

TASK #20

Monitor SAS CRT and Assume Command of the Security System

CONDITIONS: Given an operational SAS console, an operator's manual, knowledge of command switchover procedures, a simulated failure of the CAS, and the requirement to take command of the security system.

STANDARDS: Observe the SAS CRT and demonstrate the ability to discern that the CAS has not responded to or acknowledged an alarm; perform the prescribed response or acknowledgement; implement security system command switchover procedures; and take command of the system.

TASK #21

Engage Targets with a .38 Caliber Revolver

CONDITIONS: Given a firearms qualification range, a .38 caliber revolver, 60 rounds of ammunition, associated equipment, and the requirement to fire the CPSES Security Training and Qualification Plan handgun course.

STANDARDS: Achieve a minimum score of 70% on the CPSES Security Training and Qualification Plan handgun course.

TRAINING and QUALIFICATION PLAN

REVISION 6

PAGE 22

TASK #22

Engage Targets With a 12 Gauge Police Riot (Cylinder Bore) Shotgun

CONDITIONS: Given a firearms qualification range, a 12 gauge police riot (cylinder bore) shotgun, eight (8) rounds of 00 buckshot (9 pellet) shotgun shells, and the requirement to fire the CPSES Security Training and Qualification Plan shotgun course.

STANDARDS: Achieve a minimum score of 50% on the CPSES Security Training and Qualification shotgun course.

TASK #23

Utilize a Protective Mask

CONDITIONS: Given a prefitted protective mask and carrier, a simulated warning or alarm that a chemical hazard is present, and the requirement to properly don and wear the protective mask.

STANDARDS: After prefitting the mask in accordance with instructions, within fifteen (15) seconds remove the mask from the carrier, put on the mask and achieve an effective seal.

TASK #24

Utilize a Nightstick

CONDITIONS: Given a nightstick, a simulated confrontation with an assailant, and the requirement to demonstrate proper striking areas.

STANDARDS: Demonstrate correct holding of the nightstick and proper striking areas.

TRAINING and QUALIFICATION PLAN

REVISION 6

PAGE 23

TASK #25

Deploy to Investigate, Intercept, Arrest/Retain Intruder

CONDITIONS: Given a simulated situation involving an intruder and the requirement to investigate, intercept, and arrest/detain intruder.

STANDARDS: Proceed rapidly to the location of the alarm; upon arrival at the zone in alarm investigate until intruder is discovered, maintain radio contact with the CAS, request backup if required, halt the intruder and properly identify yourself; state the reason for arrest/detention, simulate an appropriate search for weapons, if required, and describe the procedures for disposition of the intruder.

TASK #26

Execute Tactical Response to an Attack, and Contain Adversaries and Isolate from Vital Area

CONDITIONS: Given a report of a simulated attack and the requirement to respond as part of a team to temporary defensive positions and contain adversaries and isolate them from Vital Areas.

STANDARDS: Demonstrate the ability to deploy using correct procedures for cover and concealment to a temporary defensive position between the adversary and Vital Areas, with a good field of view make contact with adversary, executing team tactics to contain the adversary so movements are limited and the adversary is prevented from penetrating a Vital Area, and make status reports to Response Force Leader.

TASK #27

Conduct Search for Sabotage Device and Evacuate and Isolate an Area

CONDITIONS: Given an area or series of rooms to search and the requirement to search for and report any suspicious objects or devices, and to describe actions to be taken to evacuate and isolate the surrounding area.

STANDARDS: Conduct a methodical search of the assigned area, recognize and report any suspicious object that might be a sabotage device or might conceal a sabotage device, make appropriate reports including a report by means other than a radio of the discovery of a suspected sabotage device, evacuate the area, cordon the area, and control access.

TRAINING and QUALIFICATION PLAN

REVISION 6

PAGE 24

TASK #28

Assess Cause of Alarm

CONDITIONS: Given a simulated alarm that the CAS/SAS is unable to assess using CCTV and the requirement to assess the alarm by investigation.

STANDARDS: Receive an order from the CAS Operator, proceed to the location of the alarm, conduct an investigation into the cause utilizing proper assessment procedures, and initiate compensatory measures if appropriate.

TASK #29

Test and Use Alternate Means of Communication

CONDITIONS: Given a simulated situation where on- and off-site communications are lost between the CAS and other elements of the Security Organization or LLEA and the requirement to establish alternate means of communications.

STANDARDS: Demonstrate the ability to implement contingency procedures by conducting a communications check and changing to an alternate frequency; establish communications by at least one means other than radio or telephone; and utilize the alternate means of communication.

TASK #30

Conduct Search for Missing Member of the Security Organization

CONDITIONS: Given a simulated situation where there is a missing member of the Security Organization, his/her last known location, and the requirement to search for the missing member.

STANDARDS: Conduct a methodical search beginning with the last known location of the missing member and provide the CAS Operator with periodic situation reports.

TRAINING and QUALIFICATION PLAN

REVISION 6

PAGE 25

TASK #31

Conduct Surveillance to Compensate for Alarm System Degradation

CONDITIONS: Given a simulated major alarm system degradation that requires compensatory measures, the command to deploy, and the requirement to provide an equivalent level of detection or surveillance to that of the intrusion detection system and/or CCTV.

STANDARDS: Demonstrate the ability to deploy to predesignated or other temporary fixed post; establish a fixed post where Protected or Vital Area barriers can be observed, as indicated in Security Procedures; and demonstrate proper procedures for reporting findings of suspicious activities and for making periodic status reports to the CAS/SAS.

TASK #32

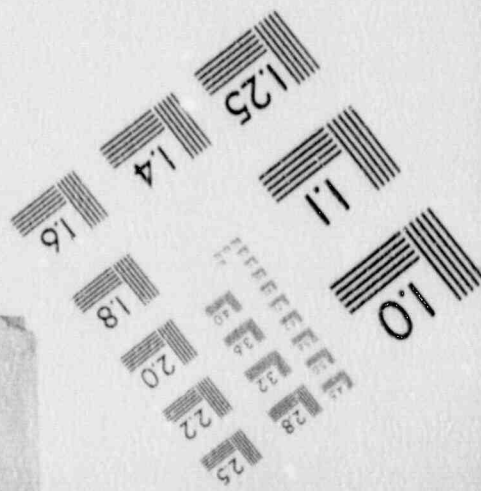
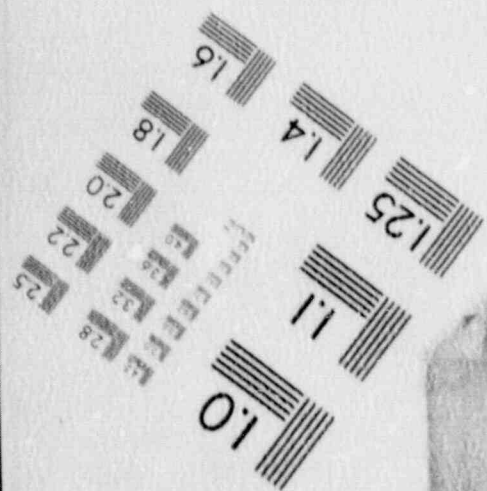
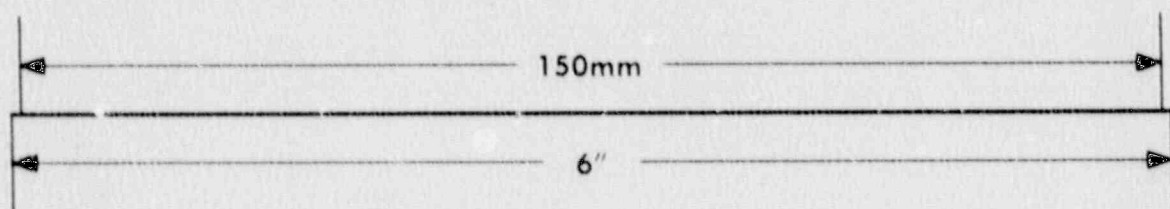
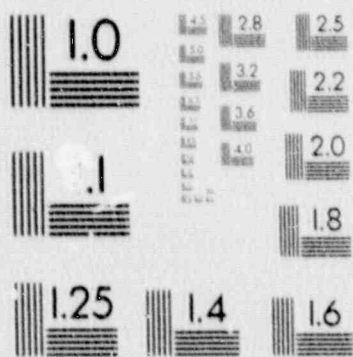
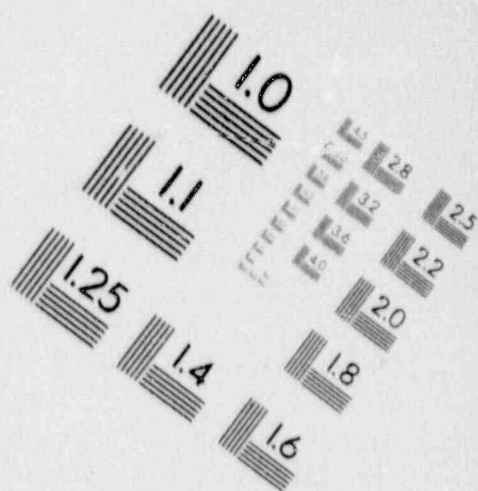
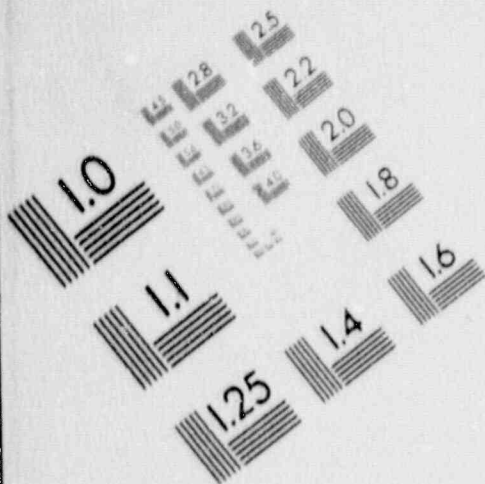
Monitor Alarm and Annunciator Tests

CONDITIONS: Given Security Procedures, an operational CAS/SAS console, an operator's manual, personnel to trigger appropriate alarms, and the requirement to test alarms being placed in service following an outage or deactivation, and during continuous service.

STANDARDS: Monitor required tests on each type of alarm sensor in accordance with Security Procedures and the operator's manual, and verify test results are properly recorded.

1

IMAGE EVALUATION TEST TARGET (MT-3)



TRAINING and QUALIFICATION PLAN

REVISION 6

PAGE 26

2.2.3 Duty Qualification

Prior to position assignment, Security personnel shall successfully demonstrate performance of all crucial tasks associated with the individual's assigned position, in accordance with the standards and conditions as outlined in this plan.

2.2.4 Individual Qualification Records

The duty qualification record for each individual assigned Nuclear security related duties is available on site for a period of three (3) years. Each record contains:

- ° Acknowledgement by signature of the TU Electric Security Manager or other designated TU Electric personnel that each individual has successfully performed all crucial tasks associated with the examinee's assigned duties.
- ° For each crucial task and examinee, a record containing the date of successful performance, the signature of the observer and the signature of the examinee.

2.2.5 Test Materials

Current samples of tests (Crucial Task Evaluation Checklists) utilized to evaluate members of the Security Organization for each task listed in Section 2.2.1 are available at the site for at least a three (3) year period.

2.3 Contract Personnel

Contract Security personnel are trained, equipped, and qualified in accordance with this Plan. The adequacy of those portions of the training and qualification program conducted by the Security Organization Contractor are verified by TU Electric certification and audit, and are documented and attested to by the TU Electric Security Manager or other designated TU Electric personnel.

2.4 Regualification

Security Organization personnel are requalified at least every 12 months to perform assigned duties and associated crucial task for both normal and contingency operations in accordance with this Plan. The results are documented and acknowledged in accordance with Section 2.2.4. Regualification may be accomplished by observation of routine on-the-job performance by the Training Officer or other designated personnel, if the tasks are performed to the standards specified in Section 2.2.2.

TRAINING and QUALIFICATION PLAN

REVISION 6

PAGE 27

3.0 WEAPONS TRAINING

3.1 Weapons Familiarity and Proficiency

Security Officers and armed response personnel requiring weapons training to perform assigned security related duties and associated crucial tasks are provided training through classroom instruction and range firing.

Prior to firing assigned weapons for qualification, each individual receives training in and is knowledgeable of:

- a. Mechanical assembly, disassembly, range penetration capability of weapons, and bullseye firing.
- b. Weapons cleaning and storage.
- c. Combat firing, day and night.
- d. Safe weapons handling.
- e. Clearing, loading, unloading, and reloading.
- f. When to draw and point a weapon. (Use of Force)
- g. Rapid fire techniques.
- h. Close quarter firing.
- i. Stress firing. (Time Constraints)
- j. Zeroing assigned weapons.

Combat firing, rapid fire techniques, close quarter firing, and stress firing are integrated into the qualification and familiarization courses of fire described in Section 4.0.

3.2 Use of Force

Security personnel are trained to use only that degree of force, up to and including deadly force, necessary for the protection of personnel and property in accordance with state law.

4.0 WEAPONS QUALIFICATION AND REQUALIFICATION

All individuals assigned to positions within the CPSES Security Organization which require armed personnel shall qualify on assigned weapons prior to assignment. Handguns (.38 caliber revolvers) and shotguns (12 gauge police riot, cylinder bore) are the weapons utilized at CPSES. Qualification firing for assigned weapons is conducted in accordance with a. and b. of this Section.

TRAINING and QUALIFICATION PLAN

REVISION 6

PAGE 28

Armed individuals are requalified on their assigned weapons at least every 12 months in accordance with a. and b. of this Section.

- a. Armed personnel qualify with the .38 caliber revolver firing a modified NRA Police Course. The course of fire is conducted during daylight as follows:

Stage	Range	Position	No. Rounds	Time ¹	Target ²
1	7 yds	Standing Without Support (Double Action)	12	25 Sec.	B-27
2	25 yds	Kneeling (Double Action)	6	90 Sec. for Stage 2	B-27
		Standing, Left Hand from Behind Barricade (Double Action)	6		
		Standing, Right Hand from Behind Barricade (Double Action)	6		
3	25 yds	Standing Without Support (Double Action)	6	12 Sec.	B-27
CHANGE TARGETS					
4	25 yds	Sitting (Single or Double Action)	6	2 Min. and 45 Sec. for Stage 4	B-27
		Prone (Single or Double Action)	6		
		Standing Left Hand from Behind Barricade (Single or Double Action)	6		
		Standing Right Hand from Behind Barricade (Single or Double Action)	6		

¹Includes reloading for second or subsequent six (6) shot strings.

²As set forth by the National Rifle Association (NRA) in its official rules and regulations, "NRA Target Manufacturers Index," December 1976.

Qualifying score for the revolver course is an accumulated total of 70 percent of the maximum obtainable score.

TRAINING and QUALIFICATION PLAN

REVISION 6

PAGE 29

- b. Personnel assigned the 12 gauge police riot (cylinder bore) shotgun in the performance of their duties qualify by firing the following course during daylight:

Range	Position	No. Rounds ¹	Target ²
15 yds.	Hip Fire Point	4	B-27
25 yds.	Shoulder	4	B-27

¹At each distance one round is fired at each of the four targets within 10 seconds using 00 buckshot (9 pellets) shotgun shells.

²As set forth by the National Rifle Association (NRA) in its official rules and regulations, "NRA Target Manufacturers Index," December 1976.

To qualify, the individual is required to place 50 percent (36 pellets) of all pellets within the black silhouette areas of the four targets combined.

- c. Night time familiarization with both handguns and shotguns will be conducted prior to initial assignment. Additionally, night time familiarization will be conducted for both the .38 caliber pistol and 12 gauge shotgun at least once per year.

5.0 CROWD CONTROL TRAINING

All Security personnel receive general instruction in maintaining crowd control for appropriate contingencies. Crowd control training is provided during the initial training program and may be provided during scheduled retraining.

6.0 SECURITY EQUIPMENT

Armed personnel are equipped with, or have available, security equipment appropriate to the individual's assigned duties as described in Section 2.3.6 of the CPSES Physical Security Plan and in Section 3.6.3 of the CPSES Safeguards Contingency Plan.

7.0 EMERGENCY RESPONSE ACCESS CONTROL TRAINING

Access during site operating emergencies shall be controlled in accordance with contingency procedures. All Security personnel are trained to implement emergency response access controls through contingency plan and procedures familiarization and through emergency drills.

TRAINING and QUALIFICATION PLAN

REVISION 6

PAGE A-1

APPENDIX A GLOSSARY OF TERMS

APPENDIX A

GLOSSARY OF TERMS

The following terms and definitions apply to the CPSES Security Training and Qualification Plan and Program:

- A. Associate Security Officer - An unarmed member of the Security Organization.
- B. Certification - Verification by the TU Electric Security Manager or other designated TU Electric personnel that a member of the Security Organization has successfully completed his/her duty qualification tests or qualification in all crucial tasks for his/her shift assignment in the Security Organization.
- C. Conditions - Those events, equipment, or work station effects that members of the Security Organization experience while performing a given task. The environment surrounding the performance of a crucial task.
- D. Crucial Task(s) - An act or series of acts performed by a member of the Security Organization that produces a product or an achievable result crucial to the implementation of the CPSES Physical Security or Safeguards Contingency Plans.
- E. Duty - A general statement of a group or series of tasks conducted within a single position assignment.
- F. Position Assignment - An assigned position within the Security Organization responsible for specific duties. Examples include the CAS Operator, the Security Shift Supervisor, etc.
- G. Qualification - Demonstrated successful performance of a given crucial task by a member of the Security Organization meeting the minimum standards and under the stated conditions for that task.
- H. Security Officer - An armed member of the Security Organization.
- I. Standards - Those measureable and observable characteristics of a task that tell how well it is being, or has been, performed. Standards may include time constraints.
- J. Task Identification Summary - A matrix identifying crucial tasks and cross-referencing them to sources requiring the performance of those tasks (i.e., the Physical Security and Safeguards Contingency Plans) and to actual position assignments.

**APPENDIX B
IMPLEMENTATION SCHEDULE**

TRAINING and QUALIFICATION PLAN

REVISION 6

PAGE B-2

APPENDIX B IMPLEMENTATION SCHEDULE

In accordance with 10CFR73.55(b)(4), the following implementation schedule for the qualification of Security personnel at CPSES is submitted:

Action	Date
Commencement of Training and Qualification of Personnel	Six Months Prior to Fuel Load
Completion of Training and Qualification of Personnel	Two Months rior to Fuel Load

SUMMARY OF CHANGES

REV NO.	EFFECTIVE DATE	OLD PAGE	NEW PAGE	DESCRIPTION/REASON FOR CHANGE
6	11-8-90	Throughout	T&Q	Deletion of "Nuclear" from Security Organization and personnel titles to reflect the current Physical Security Plan and organizational structure. These changes are not marked by change bars.
6	11-8-90	1	1	Introduction: deletion of the last paragraph to reflect the determination that the T&Q Plan does not contain Safeguards Information. The majority of the information in the T&Q Plan paraphrases regulatory requirements which are available to the public. The crucial tasks are only identified in general; specific crucial task information is described in other Security Training documents. No exact information is contained in the T&Q Plan concerning the size of the Security Organization, the number of armed responders, or the deployment of armed responders.
6	11-8-90	7	7	Section 2.1, correction of typographical error: "retaining " to "retraining."
6	11-8-90	8-13	8-13	Section 2.2.1, correction of references to the Physical Security and Safeguards Contingency Plans: changes identify the current corresponding sections.
6	11-8-90	11, 12, 13	N/A	Section 2.2.1, deletion of Crucial Tasks 20, 28 and 35 from matrix and renumbering of remaining crucial tasks. See related explanations under old pages 21 (Crucial Task 20), 23 (Crucial Task 28), and 26 (Crucial Task 35).
6	11-8-90	15	15	Section 2.2.2, Crucial Task 1: deletion of requirement to actually contact the required individuals in order that this step may be simulated during testing.
6	11-8-90	15	15	Section 2.2.2, Crucial Task 2: deletion of the requirement to issue the key card badge. This step is included in Crucial Task 6.

SUMMARY OF CHANGES

REV NO.	EFFECTIVE DATE	OLD PAGE	NEW PAGE	DESCRIPTION/REASON FOR CHANGE
6	11-8-90	16	16	Section 2.2.2, Crucial Task 6: deletion of the requirement to complete the Visitor Log. This step is included in Crucial Task 2. Also, the requirement to issue key card badges has been clarified in Crucial Task 6.
6	11-8-90	17	17	Section 2.2.2, Crucial Task 8: change to a general notification requirement to allow the flexibility necessary to reflect actual operational notifications.
6	11-8-90	19	19	Section 2.2.2, Crucial Task 13: task has been changed to emphasize the patrol commitment. Guard tour card readers will not be used to accomplish this task.
6	11-8-90	20	20	Section 2.2.2, Crucial Task 16: change "each" to "designated" to allow the task to be completed in a reasonable amount of time as the number of posts and patrols has greatly increased.
6	11-8-90	21	21	Section 2.2.2, Crucial Task 19: clarification of the employee data base information to reflect the current system.
6	11-8-90	21	N/A	Section 2.2.2, deletion of old Crucial Task 20 (initiation and monitoring of guard tours): change reflects actual practice. Guard tour patrols are not required by the Security Plan and are not used by the Security shifts. The patrol commitment is addressed in Crucial Task 13 and will be accomplished by more effective methods which do not require initiation through CAS/SAS. Consequently, this task is being deleted as it does not enhance Security personnel capabilities.
6	11-8-90	23	23	Section 2.2.2, Crucial Task 26: update of the task to reflect current response procedures.

SUMMARY OF CHANGES

REV NO.	EFFECTIVE DATE	OLD PAGE	NEW PAGE	DESCRIPTION/REASON FOR CHANGE
6	11-8-90	23	N/A	Section 2.2.2, deletion of old Crucial Task 28 (receipt of telephone bomb threat): change reflects current Plant practices. Security personnel no longer operate the Plant phone system on backshifts and very few Security officers actually have telephone responsibilities. General, incoming phone calls are routed through a non-Security operator at all times. A bomb threat form is attached to the site phone directory which is distributed Plant wide. Plant personnel, as well as Security personnel, receive instructions as to the appropriate actions to take regarding telephone bomb threats in annual General Employee Training. Consequently, a separate crucial task for Security personnel was determined to be redundant. Security personnel retain the responsibility for investigating and resolving bomb threats through new Crucial Task 28 ²⁷ (old Crucial Task 29). NB 11/7/
6	11-8-90	25	25	Section 2.2.2, Crucial Task 32: change "perform" to "monitor" and change the record requirement to a verification requirement for clarification. Changes reflect actual practice.
6	11-8-90	26	N/A	Section 2.2.2, deletion of old Crucial Task 35 (maintenance of alarm records): this task is included in Crucial Task 17. The final step of Crucial Task 17 addresses the requirement to record the alarm and response information, therefore old Crucial Task 35 was determined to be redundant.