

NORTHEAST UTILITIES

THE CONNECTICUT LIGHT AND POWER COMPANY
 WESTERN MASSACHUSETTS ELECTRIC COMPANY
 NEW YORK WATER POWER COMPANY
 NORTHEAST UTILITIES SERVICE COMPANY
 NORTHEAST NUCLEAR ENERGY COMPANY

General Offices • Selden Street, Berlin, Connecticut

P.O. BOX 270
 HARTFORD, CONNECTICUT 06141-0270
 (203) 665-5000

September 24, 1990

Docket Nos. 50-213
50-245
50-336
50-423
813629

Re: 10CFR26.71(b)

S. Nuclear Regulatory Commission
 Attention: Document Control Desk
 Washington, DC 20555

Gentlemen:

Haddam Neck Plant
 Millstone Nuclear Power Station, Unit Nos. 1, 2, and 3
Semiannual Fitness-for-Duty Performance Data

In a letter dated August 17, 1990, (1) Connecticut Yankee Atomic Power Company (CYAPCO), on behalf of Haddam Neck Plant, and Northeast Nuclear Energy Company (NNECO) on behalf of Millstone Nuclear Power Station, Unit Nos. 1, 2, and 3, submitted its semiannual Fitness-for-Duty performance data as required by 10CFR26.71(d). Due to an administrative oversight, a positive test result for alcohol was not included in our data compilation process. Also, the original submittal contained a typographical error on the performance data forms which indicated a confirmation cutoff level of 50 ng/ml for cocaine. This has been corrected to show the actual cutoff level of 150 ng/ml.

This submittal supersedes Attachments 1 through 5 in the August 17, 1990, letter in their entirety. Attachment 1 to this letter contains an explanation of the performance data form, a summary of the performance data, a summary of management actions, and significant events reported. Attachments 2, 3, and 4 are separate compilations of data collected at the Millstone Nuclear Power Station, Haddam Neck Plant, and Northeast Utilities corporate offices, respectively. Attachment 5 is a compilation of the aforementioned sites into one data sheet.

CYAPCO and NNECO trust that the information provided herein addresses the requirements of the fitness-for-duty rule, 10CFR26.71(d) and apologizes for

(1) E. J. Mroczka letter to U.S. Nuclear Regulatory Commission, "Haddam Neck Plant, Millstone Nuclear Power Station, Unit Nos. 1, 2, and 3, Semiannual Fitness-for-Duty Performance Data," dated August 17, 1990.

00128

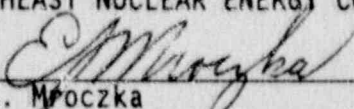
A021
 11

U.S. Nuclear Regulatory Commission
B13629/Page 2
September 24, 1990

any inconvenience this amendment may have caused the Staff. If the Staff has any questions regarding this submittal, please contact us.

Very truly yours,

CONNECTICUT YANKEE ATOMIC POWER COMPANY
NORTHEAST NUCLEAR ENERGY COMPANY



E. J. Mroczka
Senior Vice President

cc: T. T. Martin, Region I Administrator
M. L. Boyle, NRC Project Manager, Millstone Unit No. 1
G. S. Vissing, NRC Project Manager, Millstone Unit No. 2
D. H. Jaffe, NRC Project Manager, Millstone Unit No. 3
A. B. Wang, NRC Project Manager, Haddam Neck Plant
W. J. Raymond, Senior Resident Inspector, Millstone Unit Nos. 1, 2,
and 3
J. T. Shedlosky, Senior Resident Inspector, Haddam Neck Plant

Docket Nos. 50-213
50-245
50-336
50-423
B13629

Attachment No. 1

Haddam Neck Plant
Millstone Nuclear Power Station, Unit Nos. 1, 2, and 3
Northeast Utilities Service Company

Performance Data Form Explanation
Summary of Performance Data/Management Actions
Significant Events Reported

September 1990

Haddam Neck Plant
Millstone Nuclear Power Station, Unit Nos. 1, 2, and 3
Northeast Utilities Service Company
Performance Data Form Explanation
Summary of Performance Data/Management Actions
Significant Events Reported

Performance Data Form Explanation

o Cutoffs

Northeast Utilities cutoff levels differ from NRC standard cutoff levels in the marijuana category only. Northeast Utilities uses a 50 ng/ml screening cutoff level.

o Substances

Northeast Utilities tests for five additional drugs--listed on the front of the form.

o Categories

-- The "preemployment" testing category included those persons seeking a job with Northeast Utilities in a position which requires unescorted access. The category includes outside applications as well as internal transfers.

-- The "prebadging" category includes all contract personnel seeking access to a Northeast Utilities nuclear facility as well as currently employed Northeast Utilities personnel requesting unescorted access.

o NRC vs. Northeast Utilities Cutoff Levels

Since Northeast Utilities uses a cutoff level for marijuana which is more restrictive than NRC, the "# positive" column is split; the left side indicates verified confirmed positives based on NRC cutoff levels, and the right side indicates the confirmed positives based on Northeast Utilities' more restrictive cutoff levels.

o Average Number With Unescorted Access vs. Random Testing Results

The average number of employees with unescorted access for the corporate office (see Attachment 4) includes employees from a variety of support locations; some at the corporate office, others at, or near, the two plant sites.

The data reported in the random test results category reflects the number of tests actually performed at each of NU's collection locations.

Although random selection of these corporate support personnel is performed in conjunction with the corporate office pool, specimen collection is actually done at the collection site nearest the individual's work location or current assignment--frequently at one of the stations.

As a result, the number tested in the random category for the corporate office appears less than anticipated, while the number tested in the same category for Millstone and Haddam Neck is higher than expected. However, the aggregate data for total program performance (Attachment 5) demonstrates that the number of random tests performed meets the required level.

o Verified Confirmed Positive Test for Specific Substances

This section contains the number of verified confirmed positive tests, recorded by substance, during the reporting period. Please note that there is no direct correlation between the sum of these numbers and the number of verified confirmed positives entered in the section above; multiple verified confirmed positive tests per individual are recorded as separate items in this table.

Summary of Performance Data

- o 3,121 tests performed.
- o 1,794 tests were random.
 - Average population = 3,505.
 - 100 percent target rate achieved.
- o Percent verified confirmed positive rates:
 - Preemployment and Prebadging = 1.61 percent (64 percent of verified confirmed positive tests were in these two categories).
 - Random = 0.33 percent
 - Overall = 0.99 percent.
- o There were 34 verified confirmed positive tests from 31 individuals.
 - Breakdown:
 - Marijuana 17 (50 percent)
 - Cocaine 12 (35 percent)
 - Alcohol 5 (15 percent)

There were no verified confirmed positive tests for any other substance.

o NRC vs. Northeast Utilities Cutoff Levels

- A total of 17 individuals were verified confirmed positive tested for marijuana.
- Twelve of these seventeen samples screened at a level between 50 ng/ml and 99 ng/ml (71 percent of the samples were verified confirmed positive tested for marijuana at a level less than 100 ng/ml).
- Five of the seventeen samples screened at a level of 100 ng/ml or greater (that is 29 percent of the samples were verified confirmed positive tested for marijuana at a level of 100 ng/ml or greater).
- Three of the twelve individuals who were verified confirmed positive tested between 50 and 99 ng/ml also tested verified confirmed positive for another substance which has a cutoff level identical to NRC. Consequently, Northeast Utilities' lower cutoff level had no impact on the verified confirmed positive determination for these three individuals, and the total difference between NRC and Northeast Utilities results is nine.

Management Actions

Twenty-five contractor personnel tested verified confirmed positive for drugs and alcohol. Nineteen of these individuals tested verified confirmed positive in the prebadging situation. All 19 were denied unescorted access and will not be considered for unescorted access for a period of 1 year. Another 6 contractor personnel, with unescorted access, tested verified confirmed positive and unescorted access privileges were revoked. These individuals are similarly not eligible for consideration for unescorted access for 1 year.

One outside applicant for employment with Northeast Utilities tested verified confirmed positive in a preemployment test. Employment was denied and the person may not reapply for one year.

Four Northeast Utilities employees tested verified confirmed positive. Consistent with Company policy, the following actions were taken:

- o Unescorted access revoked for a minimum of 14 days.
- o Referred to the Employee Assistance Program (EAP).
- o Placed on paid medical leave for a minimum of 14 days (paid status contingent upon cooperation with the medical program).

U.S. Nuclear Regulatory Commission
B13629/Page 4
September 21, 1990

One of the above employees subsequently tested verified confirmed positive a second time, prior to reinstatement, and was terminated.

Two employees have had their unescorted access reinstated. Reinstatement of a third is pending at the time of this report.

Significant Event

On April 19, 1990, a supervisor working for a contract security firm tested verified confirmed positive for alcohol in a for-cause situation. Consistent with procedure, he was removed from the site, and unescorted access privileges were revoked for one year.

Docket Nos. 50-213
50-245
50-336
50-423
B13629

Attachment No. 2

Millstone Nuclear Power Station, Unit Nos. 1, 2, and 3

Semiannual Fitness-for-Duty
Performance Data

September 1990

FITNESS FOR DUTY PROGRAM

Performance Data Personnel Subject to CFR 26

Northeast Nuclear Energy Co.
COMPANY

Waterford, CT
LOCATION

David J. Heritage
CONTRACT NAME

June 30, 1990
6 MONTHS ENDING

(203) 245-8036
PHONE (INCLUDE AREA CODE)

CUTOFFS: SCREEN/CONFIRMATION (ng/ml) APPENDIX A TO 10CFR 26

| | | | | | |
|-----------|----------|-----------------|------------|--------------------|-----------|
| MARIJUANA | 50 / 15 | AMPHETAMINES | 1000 / 500 | Barbiturates | 300 / 300 |
| COCAINE | 300/150 | PHENCYCLIDINE | 25 / 25 | Benzodiazepines | 300/ 300 |
| OPIATES | 300/ 300 | ALCOHOL (% BAC) | 0.04 | <u>Methadone</u> | 300 / 300 |
| | | | | Methaqualone | 300/ 300 |
| | | | | <u>Pronoxypine</u> | 300 / 300 |

| TESTING RESULTS | LICENSEE EMPLOYEES | | | | CONTRACTOR PERSONNEL | | | TOTAL | | |
|-----------------|---------------------------------------|-------------|-------------------|-------------------|----------------------|--------------|-------------|--------------|-------------|------------|
| | AVERAGE NUMBER WITH UNESCORTED ACCESS | N R C | N U | | 891 | N P C | N U | 1643 | N P C | N U |
| CATEGORIES | # TESTED | # POSITIVE | # REFERRED TO EAP | # ACCESS RESTORED | # TESTED | # POSITIVE | # TESTED | # POSITIVE | # TESTED | # POSITIVE |
| PRE-EMPLOYMENT | 18 | 0 | | | 0 | 0 | 18 | 0 | | |
| PRE-BADGING | 14 | 0 | | | 845 | 10 11 | 859 | 10 11 | | |
| PERIODIC | 0 | 0 | | | 0 | 0 | 0 | 0 | | |
| FOR CAUSE | 0 | 0 | | | 4 | 3 3 | 4 | 3 3 | | |
| POST ACCIDENT | 0 | 0 | | | 0 | 0 | 0 | 0 | | |
| RANDOM | 607 | 1 1 | | | 435 | 1 1 | 1042 | 2 2 | | |
| FOLLOW-UP | 3 | 0 | | | | 0 | 3 | 0 | | |
| OTHER | 0 | 0 | | | 2 | 0 | 2 | 0 | | |
| TOTAL | 642 | 1 1 | 1 | 1 | 1286 | 14 15 | 1928 | 15 16 | | |

RANDOM TESTING PROGRAM RESULTS

| INDIVIDUALS TESTED | 1989 | 1990 | 1991 | 1992 | 1993 |
|---------------------|------|------|------|------|------|
| # POSITIVE | | 2 | | | |
| # NEGATIVE | | 1070 | | | |
| % POSITIVE | | 0.19 | | | |
| GRAPH OF % POSITIVE | | | | | |

CONFIRMED POSITIVE TESTS FOR SPECIFIC SUBSTANCES

| | | | | | | | | |
|---------------|--|----|--|--|--|--|--|--|
| MARIJUANA | | 6 | | | | | | |
| COCAINE | | 6 | | | | | | |
| OPIATES | | 0 | | | | | | |
| AMPHETAMINES | | 0 | | | | | | |
| PHENCYCLIDINE | | 0 | | | | | | |
| ALCOHOL | | 5 | | | | | | |
| TOTAL | | 17 | | | | | | |

RANDOM TESTING PROGRAM RESULTS

| INDIVIDUALS TESTED | 1989 | 1990 | 1991 | 1992 | 1993 |
|---------------------|------|------|------|------|------|
| # POSITIVE | | 2 | | | |
| # NEGATIVE | | 1040 | | | |
| % POSITIVE | | 0.19 | | | |
| GRAPH OF % POSITIVE | | | | | |
| 5 | | | | | |
| 4 | | | | | |
| 3 | | | | | |
| 2 | | | | | |
| 1 | | | | | |

CONFIRMED POSITIVE TESTS FOR SPECIFIC SUBSTANCES

| | | | | | | | | | |
|---------------|--|----|--|--|--|--|--|--|--|
| MARIJUANA | | 6 | | | | | | | |
| COCAINE | | 6 | | | | | | | |
| OPIATES | | 0 | | | | | | | |
| AMPHETAMINES | | 0 | | | | | | | |
| PHENCYCLIDINE | | 0 | | | | | | | |
| ALCOHOL | | 5 | | | | | | | |
| TOTAL | | 17 | | | | | | | |

6/7/89

Docket Nos. 50-213
50-245
50-336
50-423
B13629

Attachment No. 3
Haddam Neck Plant
Semiannual Fitness-for-Duty
Performance Data

September 1990

FITNESS FOR DUTY PROGRAM

Performance Data Personnel Subject to CFR 26

Connecticut Yankee

COMPANY

Madison Neck, CT

LOCATION

David J. Heritage

CONTACT NAME

June 30, 1990

6 MONTHS ENDING

(203) 721-2306

PHONE (INCLUDE AREA CODE)

CUTOFFS: SCREEN/CONFIRMATION (ng/ml) APPENDIX A TO 10CFR 26

| | | | | | |
|-----------|-----------|-----------------|------------|-----------------|-----------|
| MARIJUANA | 50 / 15 | AMPHETAMINES | 1000 / 500 | Barbiturates | 300 / 300 |
| COCAINE | 300 / 150 | PHENCYCLIDINE | 25 / 25 | Benzodiazepines | 300 / 300 |
| OPIATES | 300 / 300 | ALCOHOL (% BAC) | 0.04 | Methadone | 300 / 300 |
| | | | | Methaqualone | 300 / 300 |
| | | | | Propoxyphine | 300 / 300 |

| TESTING RESULTS | LICENSEE EMPLOYEES | | | | CONTRACTOR PERSONNEL | | | TOTAL | | | |
|-----------------|---------------------------------------|-------------|-------------------|-------------------|----------------------|-------------|----------|------------|-------------|------------|-----------|
| | AVERAGE NUMBER WITH UNESCORTED ACCESS | N P C | N U | | | N P C | N U | | N P C | N U | |
| CATEGORIES | # TESTED | # POSITIVE | # REFERRED TO EAP | # ACCESS RESTORED | # TESTED | # POSITIVE | # TESTED | # POSITIVE | # TESTED | # POSITIVE | |
| PRE-EMPLOYMENT | 9 | 0 | | | 0 | 0 | 9 | 0 | | | |
| PRE-BADGING | 8 | 1 | 1 | | 332 | 2 | 8 | 340 | 3 | 9 | |
| PERIODIC | 0 | 0 | | | 0 | 0 | 0 | 0 | | | |
| FOR CAUSE | 0 | 0 | | | 1 | 0 | 1 | 0 | | | |
| POST ACCIDENT | 0 | 0 | | | 0 | 0 | 0 | 0 | | | |
| RANDOM | 191 | 0 | | | 270 | 2 | 2 | 461 | 2 | 2 | |
| FOLLOW-UP | 1 | 1 | 1 | | 0 | 0 | 1 | 1 | 1 | 1 | |
| OTHER | 0 | 0 | | | 0 | 0 | 0 | 0 | | | |
| TOTAL | 209 | 2 | 2 | 1 | 0 | 603 | 4 | 10 | 812 | 6 | 12 |

RANDOM TESTING PROGRAM RESULTS

| INDIVIDUALS TESTED | 1989 | 1990 | 1991 | 1992 | 1993 |
|---------------------|------|------|------|------|------|
| # POSITIVE | | 2 | | | |
| # NEGATIVE | | 459 | | | |
| % POSITIVE | | 0.43 | | | |
| GRAPH OF % POSITIVE | 5 | | | | |
| | 4 | | | | |
| | 3 | | | | |
| | 2 | | | | |
| | 1 | | | | |

CONFIRMED POSITIVE TESTS FOR SPECIFIC SUBSTANCES

| | | | | | | | | |
|---------------|--|----|--|--|--|--|--|--|
| MARIJUANA | | 9 | | | | | | |
| COCAINE | | 5 | | | | | | |
| OPIATES | | 0 | | | | | | |
| AMPHETAMINES | | 0 | | | | | | |
| PHENCYCLIDINE | | 0 | | | | | | |
| ALCOHOL | | 0 | | | | | | |
| TOTAL | | 14 | | | | | | |

RANDOM TESTING PROGRAM TESTS

| INDIVIDUALS TESTED | 1989 | 1990 | 1991 | 1992 | 1993 | |
|---------------------|------|-------------------------------|------|------|------|--|
| # POSITIVE | | 2 | | | | |
| # NEGATIVE | | 459 | | | | |
| % POSITIVE | | 0.43 | | | | |
| GRAPH OF % POSITIVE | 5 | [Grid area for graphing data] | | | | |
| | 4 | | | | | |
| | 3 | | | | | |
| | 2 | | | | | |
| | 1 | | | | | |

CONFIRMED POSITIVE TESTS FOR SPECIFIC SUBSTANCES

| | | | | | | | | |
|---------------|--|----|--|--|--|--|--|--|
| MARIJUANA | | 9 | | | | | | |
| COCAINE | | 5 | | | | | | |
| OPIATES | | 0 | | | | | | |
| AMPHETAMINES | | 0 | | | | | | |
| PHENCYCLIDINE | | 0 | | | | | | |
| ALCOHOL | | 0 | | | | | | |
| TOTAL | | 14 | | | | | | |

Docket Nos. 50-213
50-245
50-336
50-423
B13629

Attachment No. 4
Northeast Utilities Service Company
Semiannual Fitness-for-Duty
Performance Data

September 1990

FITNESS FOR DUTY PROGRAM

**Performance Data
Personnel Subject to CFR 26**

Corporate Office
 COMPANY
Berlin, CT
 LOCATION
David J. Heritage
 CONTRACT NAME

June 30, 1990
 6 MONTHS ENDING

(203) 721-2306
 PHONE (INCLUDE AREA CODE)

CU/OFFS: SCREEN/CONFIRMATION (ng/ml) APPENDIX A TO 10CFR 26

| | | | | | |
|-----------|---------|-----------------|----------|-----------------|---------|
| MARIJUANA | 50/15 | AMPHETAMINES | 1000/500 | Barbiturates | 300/300 |
| COCAINE | 300/150 | PHENCYCLIDINE | 25/25 | Benzodiazepines | 300/300 |
| OPIATES | 300/300 | ALCOHOL (% BAC) | 0.04 | Methadone | 300/300 |
| | | | | Methaqualone | 300/300 |
| | | | | Propoxyphine | 300/300 |

| TESTING RESULTS | LICENSEE EMPLOYEES | | | | CONTRACTOR PERSONNEL | | TOTAL | | |
|---------------------------------------|--------------------|------------|-------------------|-------------------|----------------------|------------|----------|------------|--|
| | # TESTED | # POSITIVE | # REFERRED TO EAP | # ACCESS RESTORED | # TESTED | # POSITIVE | # TESTED | # POSITIVE | |
| AVERAGE NUMBER WITH UNESCORTED ACCESS | 1135 | | | | | | 1135 | | |
| PRE-EMPLOYMENT | 40 | 0 | 1 | | | | 40 | 1 | |
| PRE-BADGING | 39 | 0 | | | | | 39 | 0 | |
| PERIODIC | 0 | 0 | | | | | 0 | 0 | |
| FOR CAUSE | 0 | 0 | | | | | 0 | 0 | |
| POST ACCIDENT | 0 | 0 | | | | | 0 | 0 | |
| RANDOM | 291 | 1 | 2 | | | | 291 | 2 | |
| FOLLOW-UP | 11 | 0 | | | | | 11 | 0 | |
| OTHER | 0 | 0 | | | | | 0 | 0 | |
| TOTAL | 381 | 1 | 3 | 2 | 1 | | 381 | 3 | |

RANDOM TESTING PROGRAM RESULTS

| INDIVIDUALS TESTED | 1989 | 1990 | 1991 | 1992 | 1993 |
|---------------------|------|------|------|------|------|
| # POSITIVE | | 2 | | | |
| # NEGATIVE | | 289 | | | |
| % POSITIVE | | 0.68 | | | |
| GRAPH OF % POSITIVE | | | | | |

CONFIRMED POSITIVE TESTS FOR SPECIFIC SUBSTANCES

| | | | | | | | | | |
|---------------|--|---|--|--|--|--|--|--|--|
| MARIJUANA | | 2 | | | | | | | |
| COCAINE | | 1 | | | | | | | |
| OPIATES | | | | | | | | | |
| AMPHETAMINES | | | | | | | | | |
| PHENCYCLIDINE | | | | | | | | | |
| ALCOHOL | | | | | | | | | |
| TOTAL | | 3 | | | | | | | |

RANDOM TESTING PROGRAM RESULTS

| INDIVIDUALS TESTED | 1989 | 1990 | 1991 | 1992 | 1993 |
|---------------------|------|------|------|------|------|
| # POSITIVE | | 2 | | | |
| # NEGATIVE | | 289 | | | |
| % POSITIVE | | 0.68 | | | |
| GRAPH OF % POSITIVE | | | | | |

CONFIRMED POSITIVE TESTS FOR SPECIFIC SUBSTANCES

| | | | | | | | | |
|---------------|--|---|--|--|--|--|--|--|
| MARIJUANA | | 2 | | | | | | |
| COCAINE | | 1 | | | | | | |
| OPIATES | | | | | | | | |
| AMPHETAMINES | | | | | | | | |
| PHENCYCLIDINE | | | | | | | | |
| ALCOHOL | | | | | | | | |
| TOTAL | | 3 | | | | | | |

Docket Nos. 50-213
50-245
50-336
50-423
B13629

Attachment No. 5

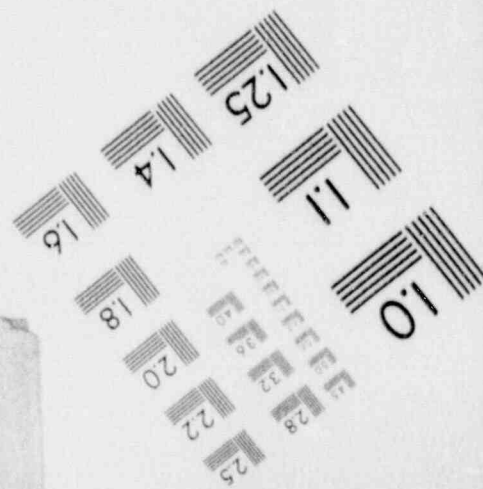
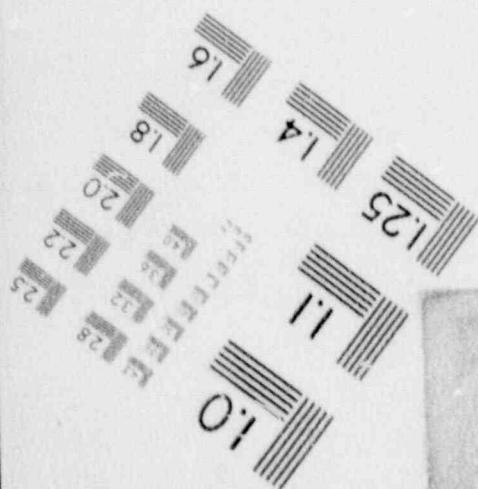
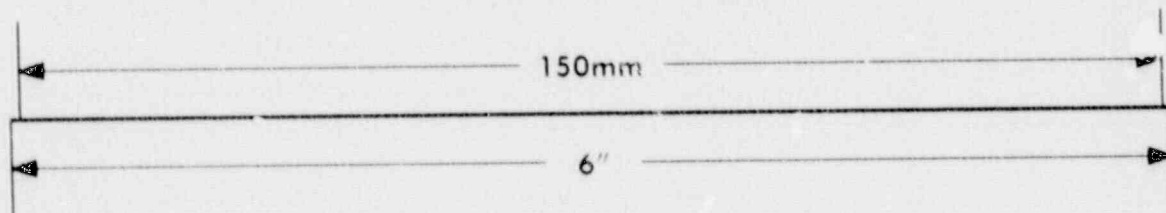
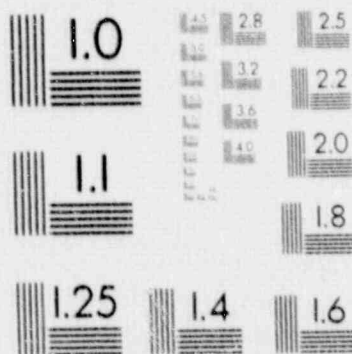
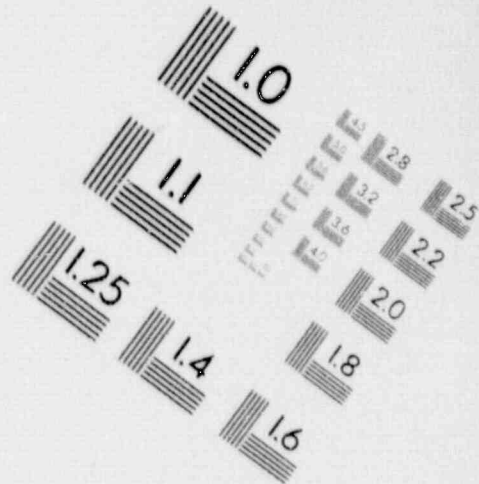
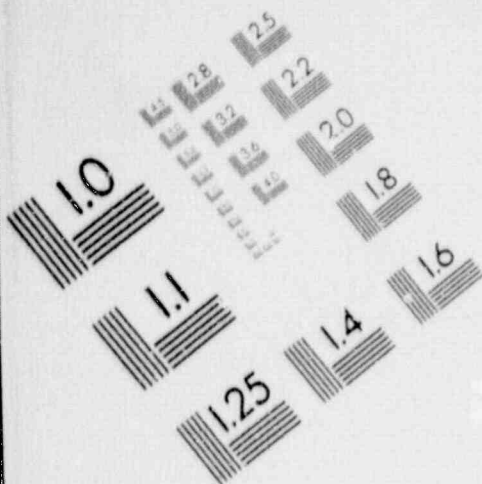
Haddam Neck Plant
Millstone Nuclear Power Station, Unit Nos. 1, 2, and 3
Northeast Utilities Service Company

Semiannual Fitness-for-Duty
Performance Data

September 1990

1

IMAGE EVALUATION TEST TARGET (MT-3)



FITNESS FOR DUTY PROGRAM

**Performance Data
Personnel Subject to CFR 26**

Northeast Utilities

June 30, 1990

COMPANY

6 MONTHS ENDING

Berlin, CT

LOCATION

David J. Heritage

CONTACT NAME

(203) 727-2306

PHONE (INCLUDE AREA CODE)

CUTOFFS: SCREEN/CONFIRMATION (ng/ml) APPENDIX A TO 10CFR 26

| | | | | | |
|-----------|---------|-----------------|----------|-----------------|---------|
| MARIJUANA | 50/15 | AMPHETAMINES | 1000/500 | Barbiturates | 300/300 |
| COCAINE | 300/150 | PHENCYCLIDINE | 25/25 | Benzodiazepines | 300/300 |
| OPIATES | 300/300 | ALCOHOL (% BAC) | 0.04 | Methadone | 300/300 |
| | | | | Methaqualone | 300/300 |
| | | | | Propoxyphine | 300/300 |

| TESTING RESULTS | LICENSEE EMPLOYEES | | | | | CONTRACTOR PERSONNEL | | | TOTAL | | |
|-----------------|---------------------------------------|-------------|-------------------|-------------------|----------|----------------------|-------------|------------|----------|-------------|--------|
| | AVERAGE NUMBER WITH UNESCORTED ACCESS | N R C | N U | [REDACTED] | | 1425 | N R C | N U | 3505 | N R C | N U |
| CATEGORIES | # TESTED | # POSITIVE | # REFERRED TO EAP | # ACCESS RESTORED | # TESTED | # POSITIVE | # TESTED | # POSITIVE | # TESTED | # POSITIVE | |
| PRE-EMPLOYMENT | 67 | 0 | 1 | [REDACTED] | 0 | 0 | 67 | 0 | 0 | 1 | |
| PRE-BADGING | 61 | 1 | 1 | [REDACTED] | 1177 | 12 | 19 | 1238 | 13 | 20 | |
| PERIODIC | 0 | 0 | [REDACTED] | [REDACTED] | 0 | 0 | 0 | 0 | 0 | 0 | |
| FOR CAUSE | 0 | 0 | [REDACTED] | [REDACTED] | 5 | 3 | 3 | 5 | 3 | 3 | |
| POST ACCIDENT | 0 | 0 | [REDACTED] | [REDACTED] | 0 | 0 | 0 | 0 | 0 | 0 | |
| RANDOM | 1089 | 2 | 3 | [REDACTED] | 705 | 3 | 3 | 1794 | 5 | 6 | |
| FOLLOW-UP | 15 | 1 | 1 | [REDACTED] | 0 | 0 | 15 | 1 | 1 | 1 | |
| [REDACTED] | 0 | 0 | [REDACTED] | [REDACTED] | 2 | 0 | 2 | 0 | 0 | 0 | |
| TOTAL | 1232 | 4 | 6 | 4 | 2 | 1889 | 18 | 25 | 3121 | 22 | 31 |

RANDOM TESTING PROGRAM RESULTS

| INDIVIDUALS TESTED | 1989 | 1990 | 1991 | 1992 | 1993 |
|---------------------|------|------|------|------|------|
| # POSITIVE | | 6 | | | |
| # NEGATIVE | | 1738 | | | |
| % POSITIVE | | 0.33 | | | |
| GRAPH OF % POSITIVE | | | | | |

CONFIRMED POSITIVE TESTS FOR SPECIFIC SUBSTANCES

| | | | | | | | |
|-----------------|--|----|--|--|--|--|--------|
| MARIJUANA | | 17 | | | | | |
| COCAINE | | 12 | | | | | |
| OPIATES | | 0 | | | | | |
| AMPHETAMINES | | 0 | | | | | |
| PHENCYCLIDINE | | 0 | | | | | |
| ALCOHOL | | 5 | | | | | |
| Barbiturates | | 0 | | | | | |
| Benzodiazepines | | 0 | | | | | |
| Methadone | | 0 | | | | | 6/7/89 |
| Methaqualone | | 0 | | | | | |
| Propoxyphine | | 0 | | | | | |
| TOTAL | | 34 | | | | | |

RANDOM TESTING PROGRAM RESULTS

| INDIVIDUALS TESTED | 1989 | 1990 | 1991 | 1992 | 1993 |
|---------------------|------|------|------|------|------|
| # POSITIVE | | 6 | | | |
| # NEGATIVE | | 1788 | | | |
| % POSITIVE | | 0.33 | | | |
| GRAPH OF % POSITIVE | | | | | |

CONFIRMED POSITIVE TESTS FOR SPECIFIC SUBSTANCES

| | | | | | | | | |
|-----------------|--|----|--|--|--|--|--|--------|
| MARIJUANA | | 17 | | | | | | |
| COCCAINE | | 12 | | | | | | |
| OPIATES | | 0 | | | | | | |
| AMPHETAMINES, | | 0 | | | | | | |
| PHENCYCLIDINE | | 0 | | | | | | |
| ALCOHOL | | 5 | | | | | | |
| Barbiturates | | 0 | | | | | | |
| Senzodiazepines | | 0 | | | | | | |
| Methodone | | 0 | | | | | | |
| Methaqualone | | 0 | | | | | | 6/7/89 |
| Propoxyphine | | 0 | | | | | | |
| TOTAL | | 34 | | | | | | |