

ATTACHMENT 3

PROPOSED CHANGE TO TECHNICAL SPECIFICATION 3.4.9.3

9403290244 940316  
PDR ADOCK 05000498  
P PDR

Replace with  
Attached.

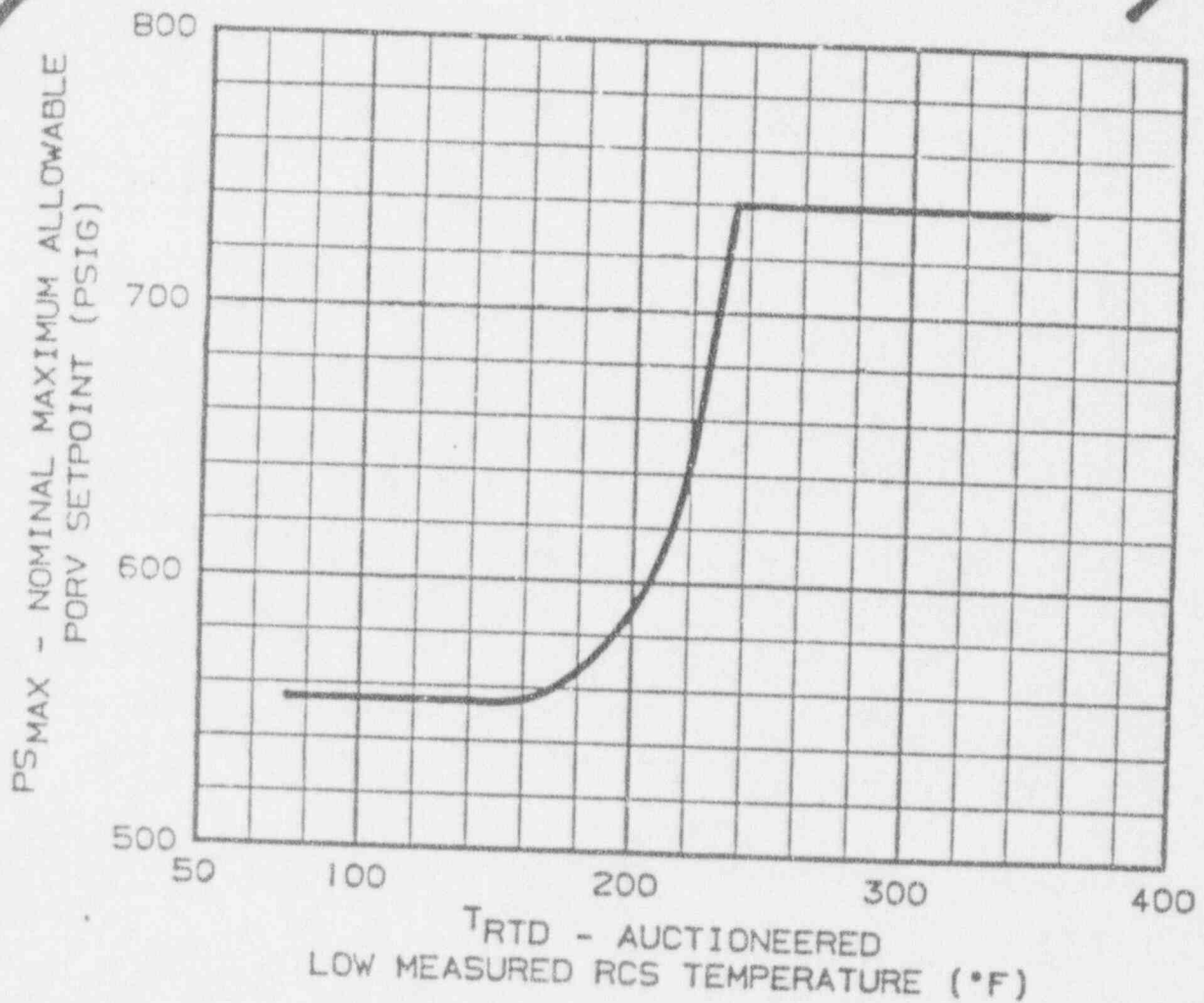
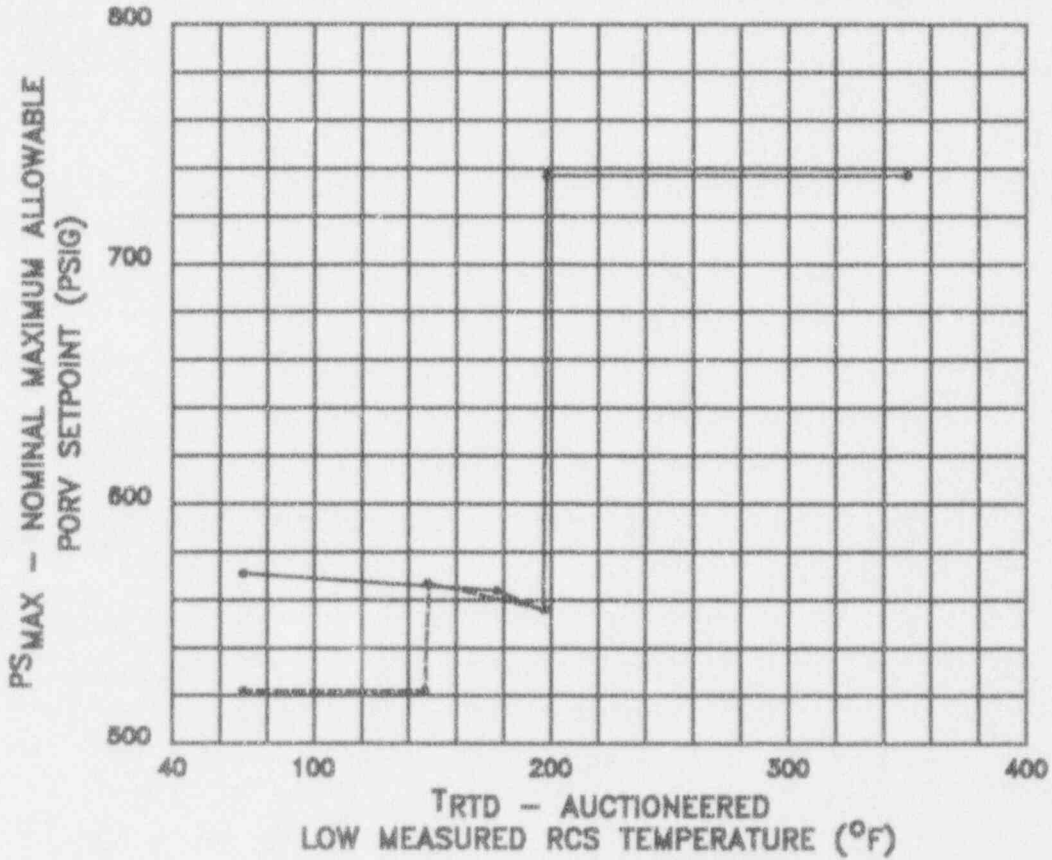


FIGURE 3.4-4

NOMINAL MAXIMUM ALLOWABLE PORV  
SETPOINT FOR THE COLD OVERPRESSURE SYSTEM

THE 2 PUMP AND 4 PUMP CURVES COINCIDE  
AT GREATER THAN OR EQUAL TO 200°F



LEGEND

- 2 PUMP OPERATION
- - - 4 PUMP OPERATION

C-1063.DWG Rev. 0

FIGURE 3.4-4  
NOMINAL MAXIMUM ALLOWABLE PORV  
SETPOINT FOR THE COLD OVERPRESSURE SYSTEM

ATTACHMENT 4

WESTINGHOUSE DOCUMENTATION

## Proprietary Information Notice

Transmitted herewith are proprietary and/or non-proprietary versions of documents furnished to the NRC in connection with requests for generic and/or plant-specific review and approval.

In order to conform to the requirements of 10 CFR 2.790 of the Commission's regulations concerning the protection of proprietary information so submitted to the NRC, the information which is proprietary in the proprietary versions is contained within brackets, and where the proprietary information has been deleted in the non-proprietary versions, only the brackets remain (the information that was contained within the brackets in the proprietary versions having been deleted). The justification for claiming the information so designated as proprietary is indicated in both versions by means of lower case letters (a) through (f) contained within parentheses located as a superscript immediately following the brackets enclosing each item of information being identified as proprietary or in the margin opposite such information. These lower case letters refer to the types of information Westinghouse customarily holds in confidence identified in Sections (4) (ii) (a) through (4) (ii) (f) of the affidavit accompanying this transmittal pursuant to 10 CFR 2.790 (b) (1).

## Copyright Notice

The reports transmitted herewith each bear a Westinghouse copyright notice. The NRC is permitted to make a number of copies of the information contained in these reports which are necessary for its internal use in connection with generic and plant-specific reviews and approvals as well as the issuance, denial, amendment, transfer, renewal, modification, suspension, revocation, or violation of a license, permit, order or regulation subject to the requirements of 10 CFR 2.790 regarding restrictions on public disclosure to the extent such information has been identified as proprietary by Westinghouse, copyright protection notwithstanding. With respect to the non-proprietary versions of these reports, the NRC is permitted to make the number of copies beyond those necessary for its internal use which are necessary in order to have one copy available for public viewing in the appropriate docket files in the public document room in Washington, DC and in local public document rooms as may be required by NRC regulations if the number of copies submitted is insufficient for this purpose. The NRC is not authorized to make copies for the personal use of members of the public who make use of the NRC public document rooms. Copies made by the NRC must include the copyright notice in all instances and the proprietary notice if the original was identified as proprietary.