

# GENERAL ELECTRIC

NUCLEAR ENERGY  
ENGINEERING  
DIVISION

GENERAL ELECTRIC COMPANY, P.O. BOX 460, PLEASANTON, CALIFORNIA 94566

August 20, 1982

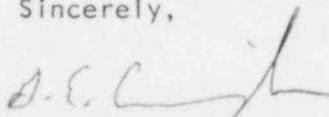
Mr. C. E. MacDonald, Chief  
Transportation Certification Branch  
Office of Nuclear Material Safety and Safeguards  
U. S. Nuclear Regulatory Commission  
Washington, D.C. 20555

- REF: 1) Certificate of Compliance No. 5942  
 2) Letter, G. E. Cunningham to C. E. MacDonald, 8/10/82

Dear Mr. MacDonald:

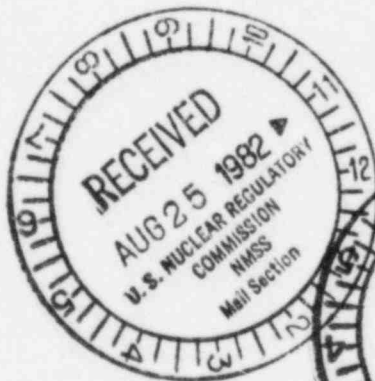
Enclosed are Drawings No's 129D4768 Rev. 3, 129D4769 Rev. 4, and 129D4770 Rev. 4. These should replace the drawings enclosed with my letter of August 10, 1982 (Ref. 2).

Sincerely,

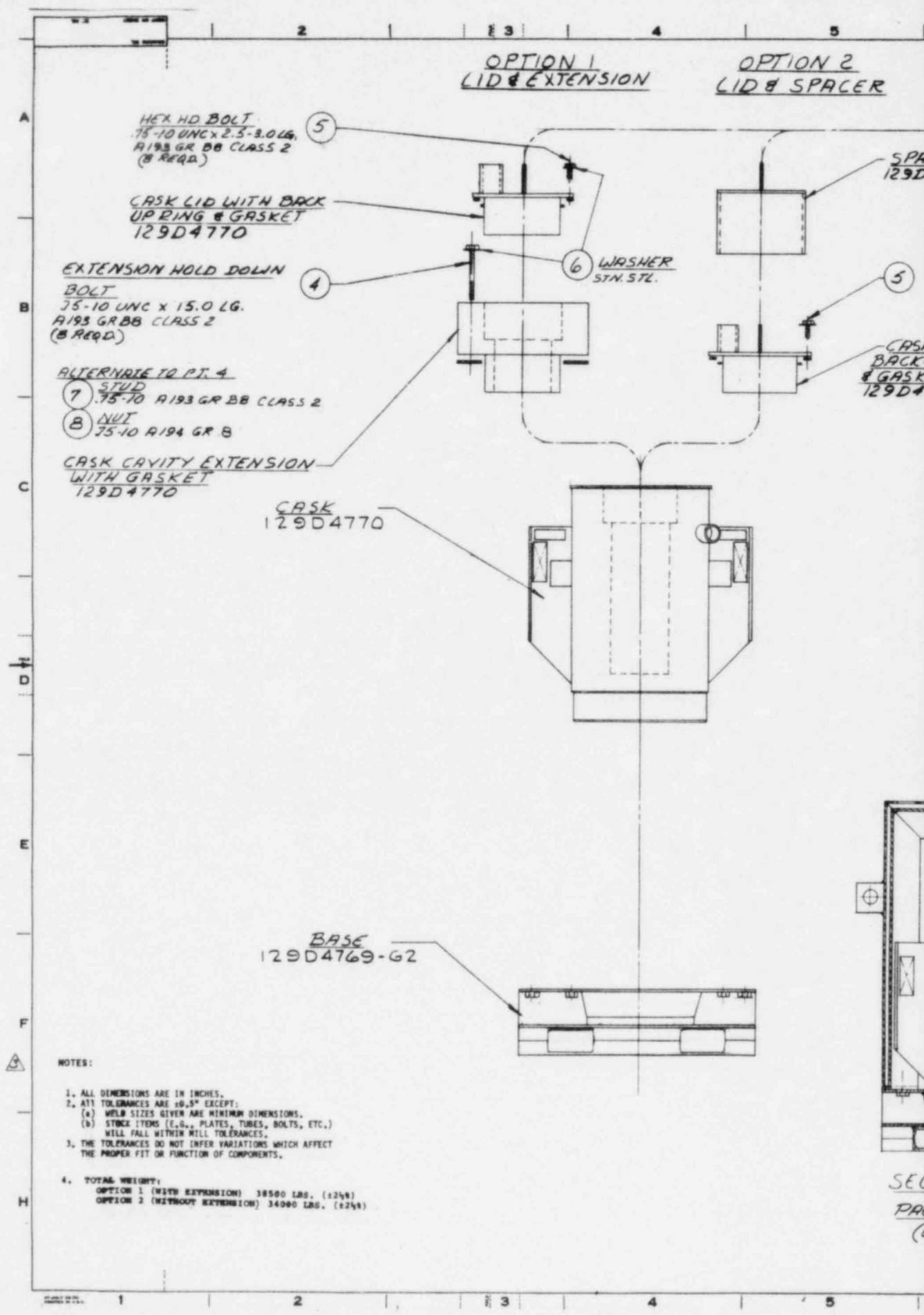


G. E. Cunningham  
Sr. Licensing Engineer

GEC:s1



**FEE EXEMPT**  
*chall nif*  
21138



**NOTES:**

1. ALL DIMENSIONS ARE IN INCHES.
2. ALL TOLERANCES ARE  $\pm 0.005$  EXCEPT:
  - (a) WELD SIZES GIVEN ARE MINIMUM DIMENSIONS.
  - (b) STUDS (E.G., PLATES, TUBES, BOLTS, ETC.) WILL FALL WITHIN MILL TOLERANCES.
3. THE TOLERANCES DO NOT INFER VARIATIONS WHICH AFFECT THE PROPER FIT OR FUNCTION OF COMPONENTS.
4. TOTAL WEIGHT:
  - OPTION 1 (WITH EXTENSION) 38500 LBS. (1244)
  - OPTION 2 (WITHOUT EXTENSION) 34000 LBS. (1244)

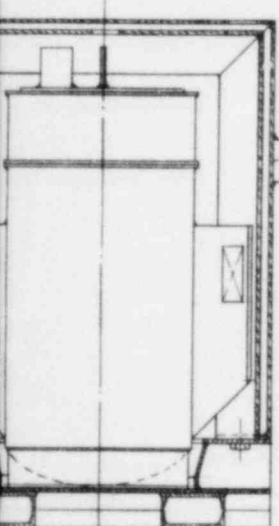
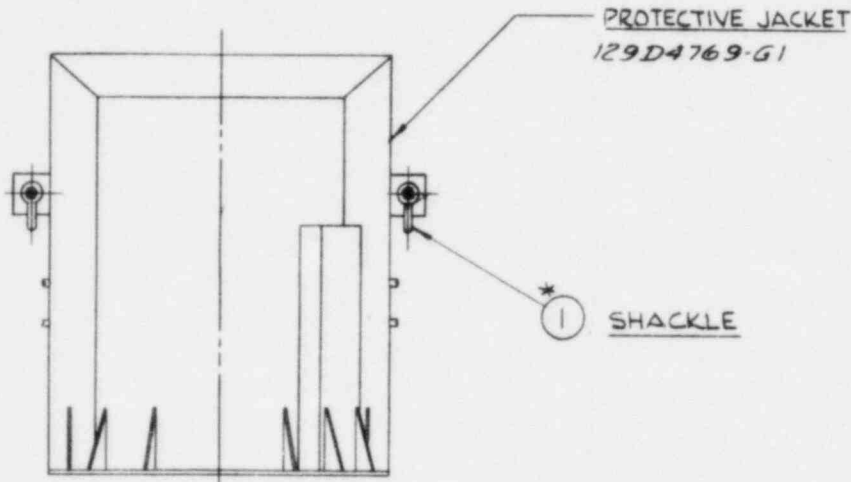
SEC  
PAGE  
(6)

UNLESS OTHERWISE SPECIFIED USE THE FOLLOWING—			
APPLIED PRACTICES	SURFACES	TOLERANCES TO UNLESS OTHERWISE SPECIFIED	FINISHES
✓	✓	±.50	✓

TITLE  
**MODEL 700 TRANSPORT CONTAINER**  
 CERTIFICATION DWG.

CER  
 4770

LID WITH  
 UP RING  
 4770



CROSS SECTION  
 SECTION A-A  
 PACKAGE CROSS SECTION  
 (OPTION 1 SHOWN)

HEX HD. BOLT  
 2.0-4.5 UNC  
 X 3.5 LB. (B REQD.)  
 ASTM A-449

2

100.30  
 REF.

\* 3

SMALL HOLES DRILLED  
 THRU JACKET AND BASE  
 PLATE FOR OPTIONAL LOCK  
 WIRE

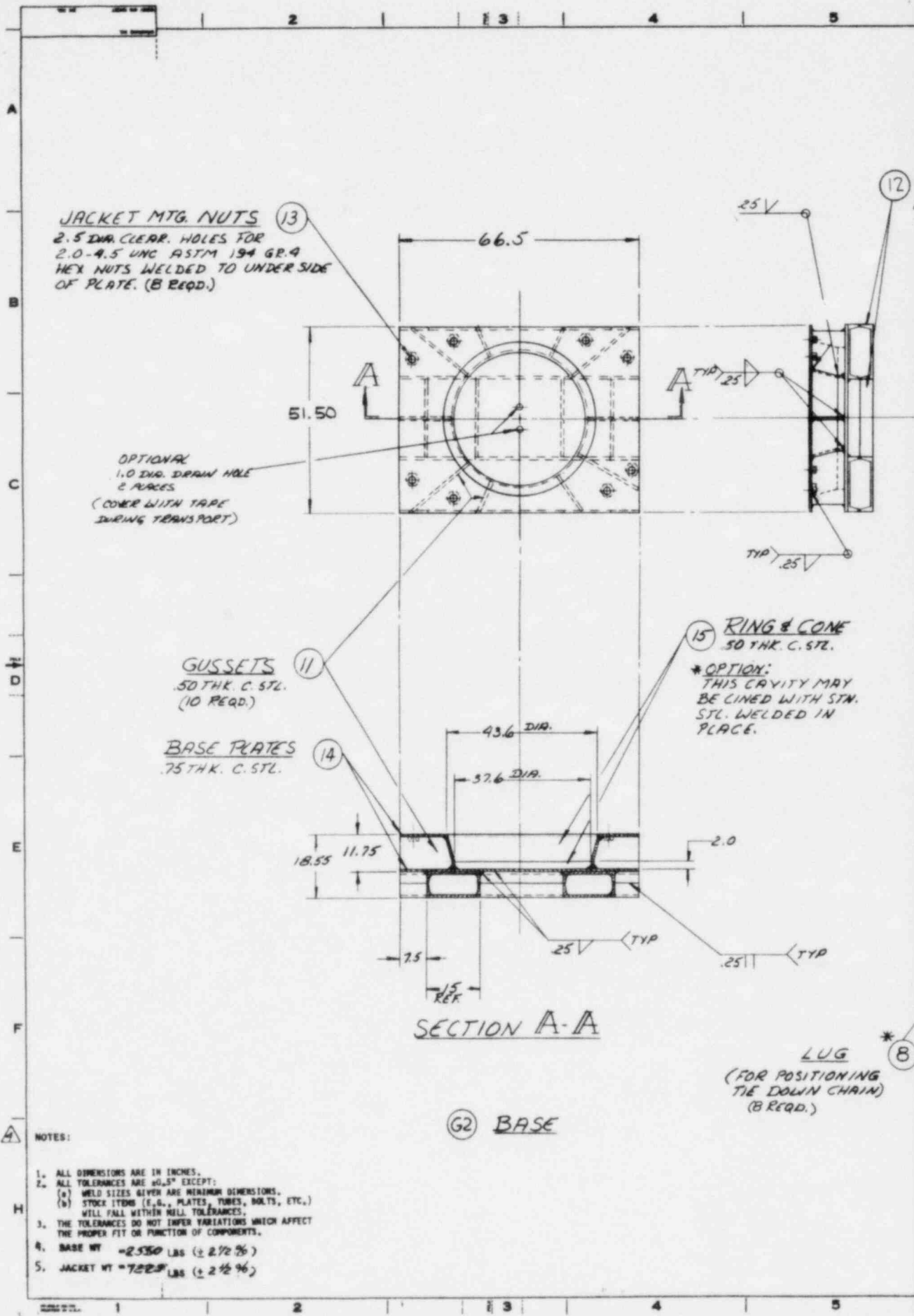
67.00  
 REF.

51.75  
 REF.

ISOMETRIC VIEW  
 OF MODEL  
 700 PACKAGE

\* NOT SAFETY RELATED COMPONENT,  
 SHOWN FOR CLARITY ONLY.

DESCRIPTION OF GROUPS	REVISIONS	PRINTS TO
2	ECN# NG 4423 10/2/80 R/V/BE	1 ECN# NG 4446 10/2/80 R/V/BE
NOT FOR FABRICATION		
3	ECN# NG 4488 10/2/80 R/V/BE	
NOV 7, 80 R/V/BE	1 P0 VNC	129D4768 CHLO 27 MAR



**JACKET MTG. NUTS** (13)  
 2.5 DIA. CLEAR. HOLES FOR  
 2.0-4.5 UNC ASTM 194 GR. A  
 HEX NUTS WELDED TO UNDER SIDE  
 OF PLATE. (B REQ.)

OPTIONAL  
 1.0 DIA. DRAIN HOLE  
 2 PLACES  
 (COVER WITH TAPE  
 DURING TRANSPORT)

**GUSSETS** (11)  
 .50 THK. C. STL.  
 (10 REQ.)

**BASE PLATES** (14)  
 .75 THK. C. STL.

(15) **RING & CONE**  
 .50 THK. C. STL.  
 \*OPTION:  
 THIS CAVITY MAY  
 BE LINED WITH STN.  
 STL. WELDED IN  
 PLACE.

**SECTION A-A**

(G2) **BASE**

(8) **LUG**  
 (FOR POSITIONING  
 TIE DOWN CHAIN)  
 (B REQ.)

**NOTES:**

1. ALL DIMENSIONS ARE IN INCHES.
2. ALL TOLERANCES ARE  $\pm 0.5^\circ$  EXCEPT:  
 (a) WELD SIZES GIVE MINIMUM DIMENSIONS.  
 (b) STOCK ITEMS (E.G., PLATES, TUBES, BOLTS, ETC.)  
 WILL FALL WITHIN MILS. TOLERANCES.
3. THE TOLERANCES DO NOT IMPER VARIATIONS WHICH AFFECT  
 THE PROPER FIT OR FUNCTION OF COMPONENTS.
4. BASE WT = 2.5350 LBS ( $\pm 2\frac{1}{2}\%$ )
5. JACKET WT = 7.2220 LBS ( $\pm 2\frac{1}{2}\%$ )

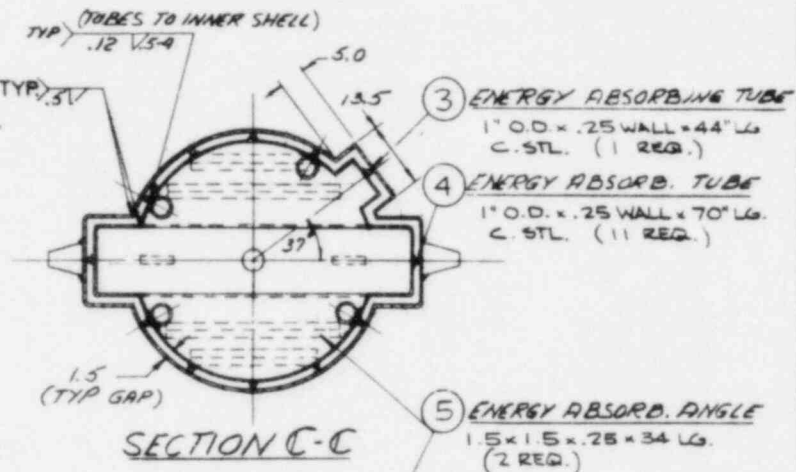
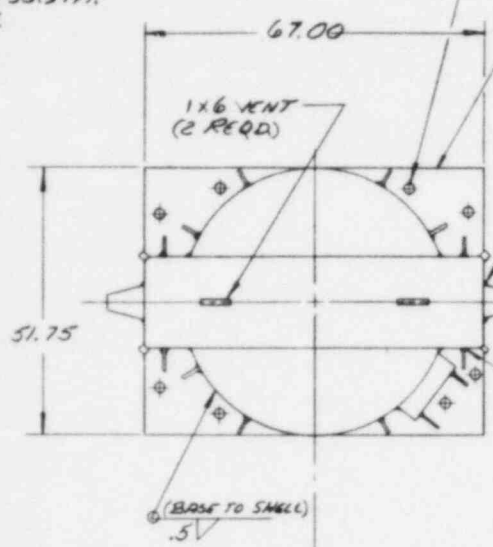
UNLESS OTHERWISE SPECIFIED USE THE FOLLOWING:			
APPLIES PRACTICES	SURFACES	TOLERANCES UNLESS OTHERWISE SPECIFIED	FINISH UNLESS OTHERWISE SPECIFIED
✓		.50	5°

TITLE  
**MODEL 700 PROTECTIVE JACKET**  
 FIRST MADE FOR: **CERTIFICATION DWG.**  
 NEXT ASSEM: **129D4768**

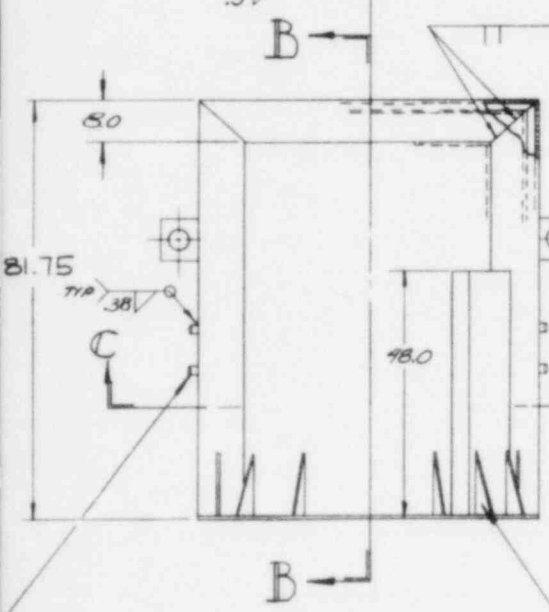
FRAME  
 5" C @ 33.94" FT.  
 C. STL.

MOUNTING HOLES  
 2.5 DIA. (8 REQD.)

9 JACKET BASE PLATE  
 .75 THK C. STL.



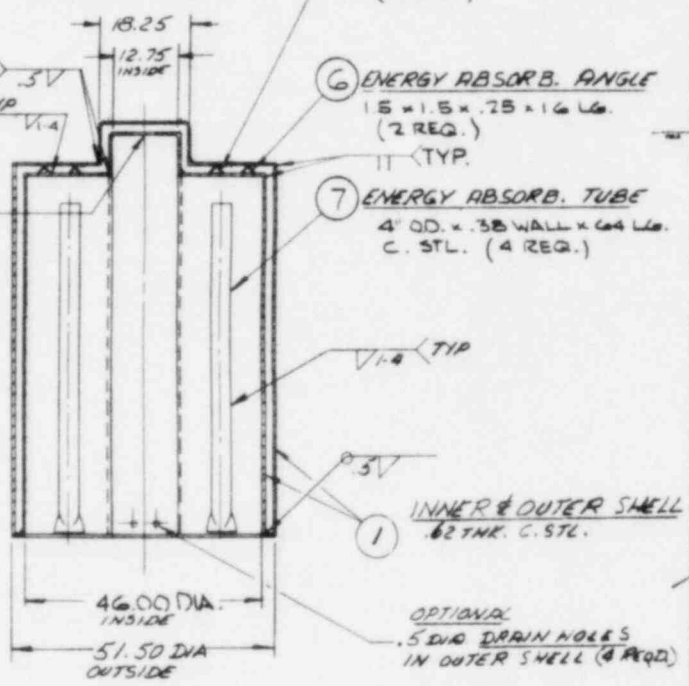
SECTION C-C



10 JACKET LIFTING  
 TIE-DOWN EAR

2 GUSSET  
 12x4x.62 THK  
 C. STL.  
 (13 REQD.)

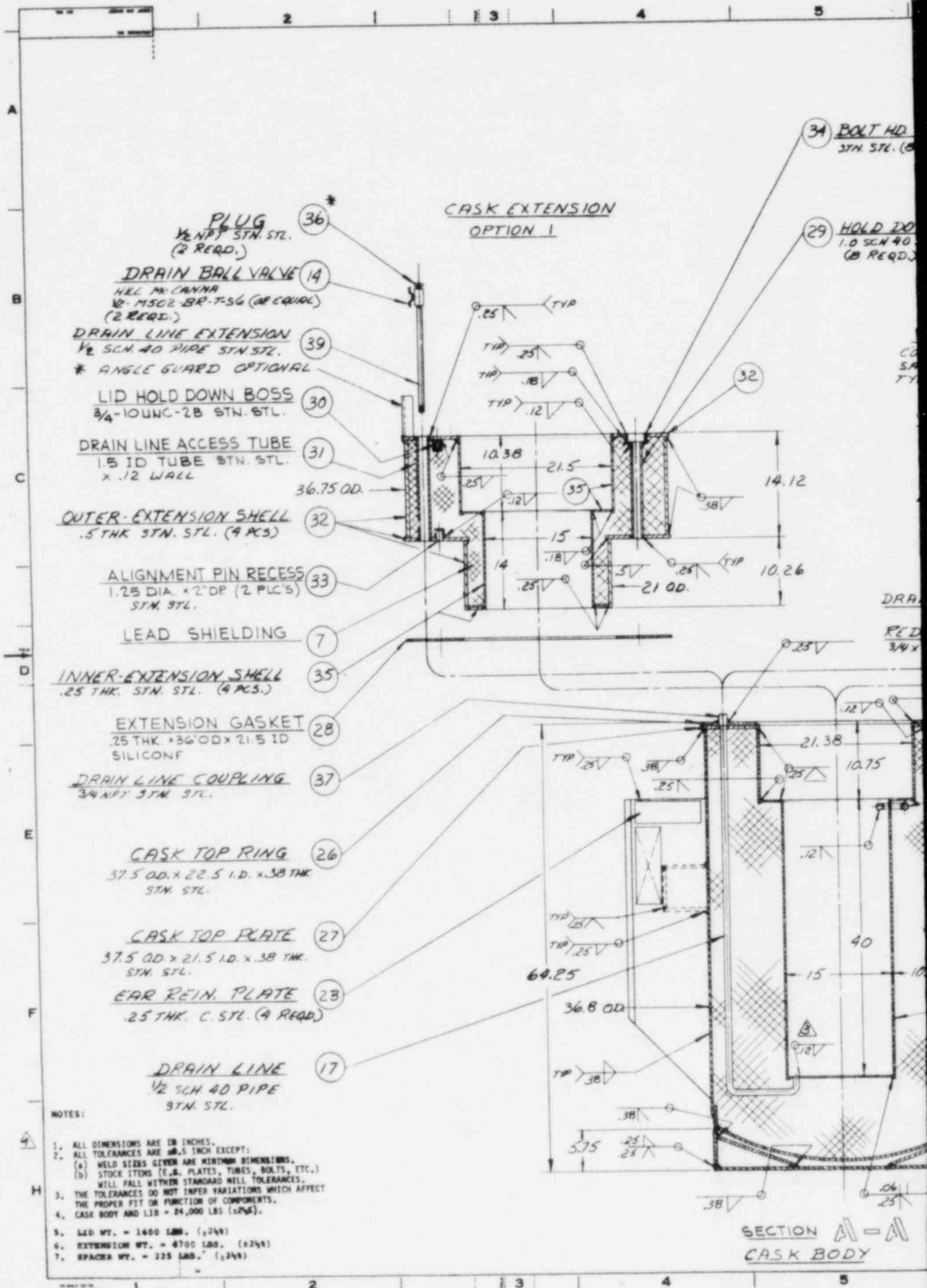
6 JACKET



SECTION B-B

\* NOT SAFETY RELATED COMPONENT,  
 SHOWN FOR CLARITY ONLY.

DESCRIPTION OF GROUPS	REVISIONS	DATE TO
2 ECN# 4472 28 REQD. T.C. MOUNT 8-2-82	1 ECN# 4445 28 REQD. T.C. MOUNT 8-2-82	
<b>NOT FOR FABRICATION</b>		
4 ECN# 4487 28 REQD. T.C. MOUNT 8-2-82	3 ECN# 4475 28 REQD. T.C. MOUNT 8-2-82	
NOV 7, 80	1 PO	129D4769
	VNC	CARD K/R 4/90





UNLESS OTHERWISE SPECIFIED USE THE FOLLOWING:

APPLIED PRACTICES	SURFACES	TOLERANCES ON DIMENSIONS	FINISHES	WELDING
✓	✓	±.50	✓	✓

MODEL 700 SHIPPING CASK

PREPARED FOR CERTIFICATION DWG  
NEXT ASSEMBLY 129D4768

RECESS  
(REQD.)

WIN BOLT SLEEVE  
PIPE STN. STL.

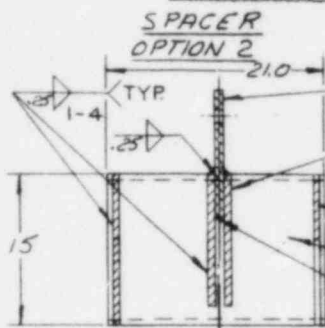
RELIEF VALVE  
INSULATED  
SAFETY VALVE  
PC 1541-DRL-100 PS1/4

VALVE GUARD  
6.0 SCH. 40 PIPE  
C. STL.

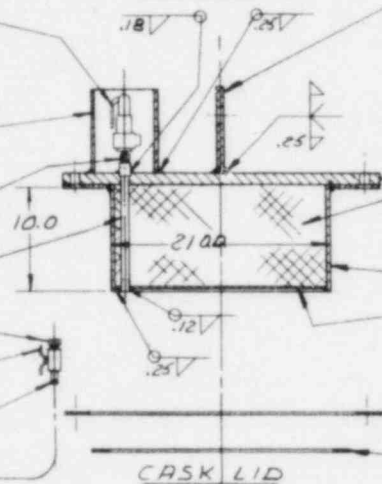
ADAPTOR  
BUSHING 3/4 x 1/2  
NPT

WIN BALL VALVE

UGER NIPPLE  
1/2 NPT STN. STL.



SPACER USED WHEN  
EXTENSION IS NOT  
INSTALLED



CASK LID

1 SPACER LIFTING PLATE  
.75 THK. C. STL.

2 PLATE  
.75 THK. C. STL.

3 PLATE  
.5 THK. C. STL.

4 CHANNEL  
15C @ 33.9 LB/FT.  
C. STL.

5 LID LIFTING PLATE  
.75 THK. STN. STL.

6 COVER PLATE - STN. STL.  
30.5 DIA. X .75 THICK WITH  
30.5 X 21.5 I.D. X .25 THICK  
DISC LAMINATED.

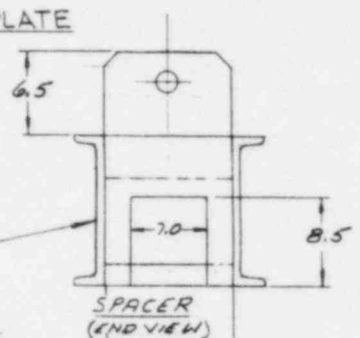
7 LEAD SHIELDING

8 LID SHELL  
.25 THK. STN. STL.

9 GASKET BACK UP RING  
.12 THK. X 30.5 OD X 26.25 ID  
STN. STL.

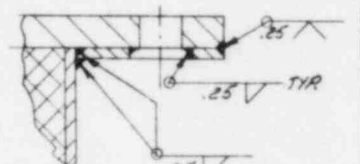
10 GASKET  
.25 THK. X 26.0 OD X 21.5 ID  
SILICONE

11 ALIGNMENT PIN  
(2 REQD.)



SPACER  
(END VIEW)

NOTE: CHANNELS (A) NOTCHED  
IN FLANGE TO CLEAR (B) &  
EFFECT PROPER FIT.



SECT. THRU COVER PL.

19 HOLD DOWN NUT  
75-10 UNC ASTM A194 GR 8 F  
(8 REQD.)

20 HOLD DOWN NUT COVER  
1 1/2 SCH. 40 PIPE NIPPLE WITH CAP  
STN. STL. (8 REQD.)

21 VENT/FILL PIPE  
1/2 SCH. 40 STN. STL.

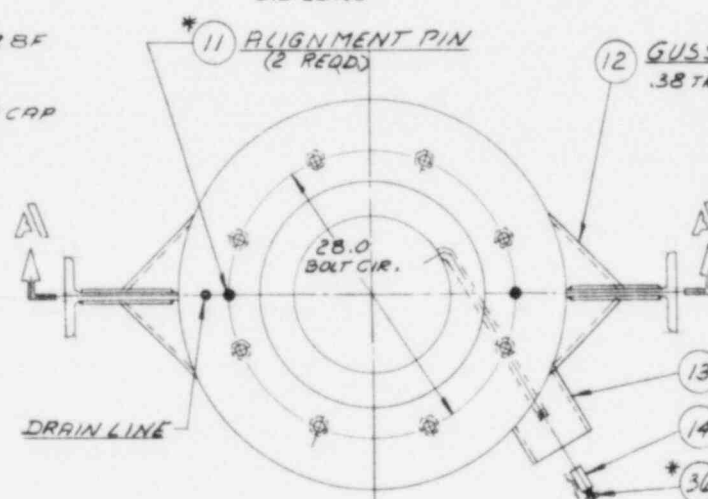
22 LIFTING EAR  
MAKE FROM 29 I @ 100/IN  
C. STL. (2 REQD.)

7 LEAD SHIELDING

38 CASK SHELL - INNER  
.25 THK. STN. STL.  
(4 PCS.)

24 CASK SHELL - OUTER  
.38 THK. C. STL.  
(2 PCS.)

25 BOTTOM SUPPORTS  
.50 THK. C. STL.



TOP VIEW OF CASK  
WITHOUT LID

\* OPTION  
THESE (2) SURFACES MAY  
BE COVERED WITH STN. STL.  
WELDED IN PLACE.

\* NOT SAFETY RELATED  
COMPONENTS SHOWN  
FOR CLARITY ONLY.

DESCRIPTION OF GROUPS	REVISIONS	PRINTS TO
2	ECN # 4474 1 ECN # NS 4444 20-10-82 10-15-82 2-2-82 2-4-82	
NOT FOR FABRICATION		
4	ECN # NS 4489 25 REQD 10-15-82 2-2-82 2-10-82	
	3	ECN # NS 4476 20-10-82 10-15-82 2-2-82 2-10-82
129D4770		
VNC		
129D4770		