



231 W. Michigan, P.O. Box 2046, Milwaukee, WI 53201

(414) 221-2345

VPNPD-90- 431
NRC-90- 100

October 5, 1990

Dr. Thomas Murley, Director
OFFICE OF NUCLEAR REACTOR REGULATION
U.S. Nuclear Regulatory Commission
Washington, DC 20555

Gentlemen:

DOCKETS 50-266 AND 50-301
RELOCATION OF RESIDENT INSPECTORS OFFICE
POINT BEACH NUCLEAR PLANT UNITS 1 AND 2

This letter is to advise you that we are planning to relocate the office space provided for NRC inspectors at our Point Beach Nuclear Plant. NRC inspectors are presently provided with office space on the third floor of our Technical Support Building. This location provides the inspectors approximately 440 sq. ft. of space. It is our intention to provide the NRC with a new office location in the new addition to the plant Service Building. This location will provide the NRC inspection personnel with approximately 830 sq. ft. of office space and will continue to meet all the requirements for licensee provided office space as specified in 10 CFR 50.70(b).

On September 28, 1990, several members of my staff accompanied Messrs. Vanderneit and Gadzala, the Point Beach NRC resident inspectors, and Mr. Ed Greenman from the NRC Region III office on an inspection tour of the new proposed office spaces. It is our understanding that these gentlemen were satisfied with the proposed facilities and have no objections to the proposed move.

Enclosed with this letter is a floor plan of the new office space. This location is convenient to and provides full access to all areas of our facility. The office will also provide the inspectors both visual and acoustic privacy. We anticipate that these new office facilities will be available for occupancy by December 15, 1990. We intend to work together with the NRC inspectors to facilitate a smooth relocation.

9010160191 901005
PDR ADOCK 05000266
PDC

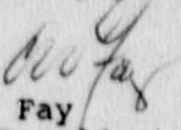
H

A001
11

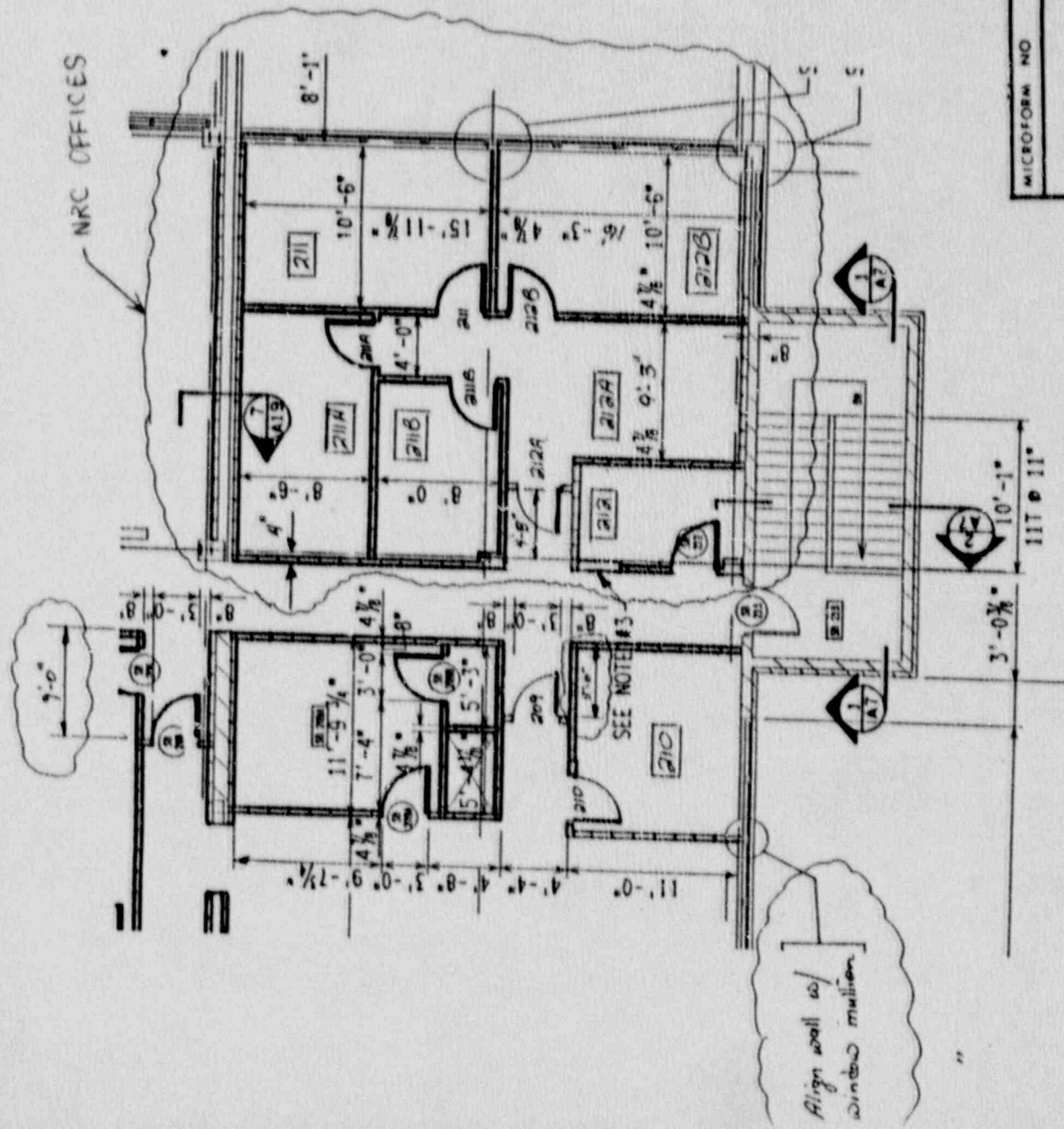
Dr. Thomas Murley
October 5, 1990
Page 2

As you know, 10 CFR 50.70 (b) (2) states that the office space provided by licensees is subject to the approval of the Office of Nuclear Reactor Regulation. Accordingly, we request your concurrence with our proposed office space so that we may proceed with the planning for this move. Your prompt consideration and action on this request will be appreciated.

Very truly yours,


C. W. Fay
Vice President
Nuclear Power

Copy to: NRC Resident Inspector
NRC Regional Administrator, Region III



DOOR SCHEDULE

Changes to existing doors

- Door 211 - Revise to Type F
- " 212 - " " "
- " 213 - Provide "A" label

New doors - Swings as indicated on drawing

- Door 211A - All doors to be Type F
- " 211B - 3'-0" x 7'-0" x 1 3/4" solid core
- " 212A - wood, stained and varnished
- " 212B - " " "

Provide Type H metal frame with enamel
Provide Hardware Group H for all doors

MICROFORM NO		TITLE Service Bldg.	
NRC Office Layout			
DESIGNED BY	DATE	SCALE	RELEASE DATE
APPROVED BY	DATE		
APPROVED BY	DATE		
APPROVED BY	DATE		

Partial Plan A-2