

SEP 10 1990

Docket No: 50-225

Rensselaer Polytechnic Institute
ATTN: Dr. Robert C. Block, Chairman
Department of Nuclear Engineering
and Engineer Physics

NES 1-9
Troy, New York 12180-3590

Gentlemen:

NRC Region I has realigned the responsibility for the research and test reactor inspection program activities for non-power reactor projects. Effective immediately, all Region I responsibility for non-power reactors will be located within the Division of Radiation Safety and Safeguards. The regional contacts regarding inspection matters, communications, and appropriate event reporting are now as follows.

	<u>Telephone</u>
Thomas F. Dragoun, Project Scientist (Principal) Effluents Radiation Protection Section	215-337-5373
Dr. Robert J. Bores, Chief (Alternate) Effluents Radiation Protection Section Facilities Radiological Safety and Safeguards Branch Division of Radiation Safety and Safeguards	215-337-5213

All Part 50 submittals shall be sent to the NRC Document Control Desk as before with a copy to the Project Scientist in the regional office. Any notifications you are required to make to the Headquarters Operations Officer (301-951-0550) should still be made to that individual. The NRC takes this action to improve the effectiveness and coordination of the non-power reactor inspection program. Please feel free to contact the above personnel if you have any questions.

Sincerely,



Thomas T. Martin
Regional Administrator

Enclosures:

1. Organizational and Functions - Regional Office
2. Division of Radiation Safety and Safeguards

0030 OFFICIAL RECORD COPY

NPRLTR 1 - 0014.0.0
08/29/90

9009280032 900910
PDR ADOCK 05000225
Q PNU

IE 06
11

SEP 10 1990

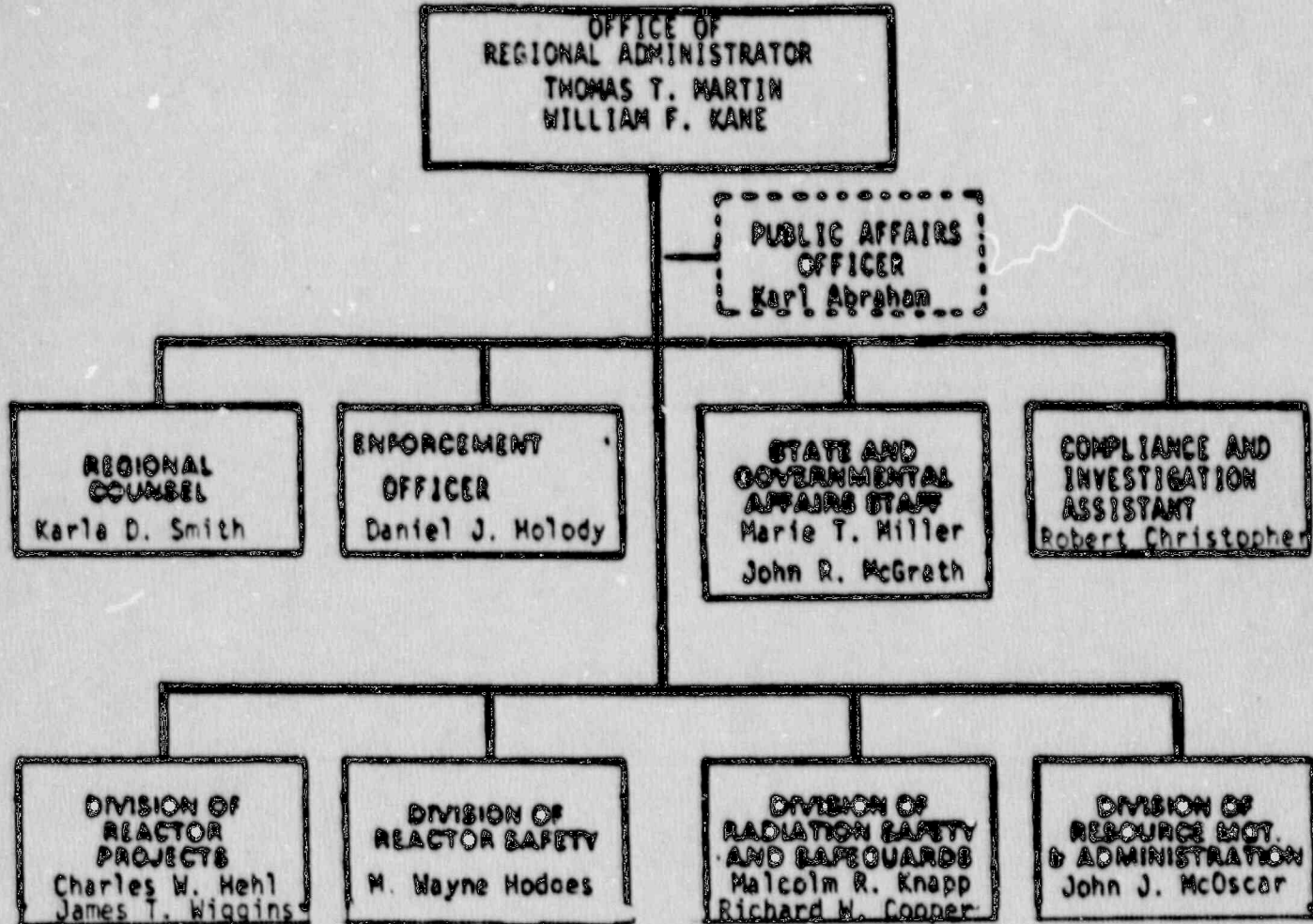
cc w/encls:

Dr. D. R. Harris, Director, Reactor Critical Facility (RCF)
P. Angelo, Supervisor, RCF
Dr. G. Judd, Vice Provost, Dean of Graduate School
Dr. William Vernetson, Director of Nuclear Facilities,
University of Florida
Public Document Room (PDR)
Local Public Document Room (LPDR)
Nuclear Safety Information Center (NSIC)
State of New York

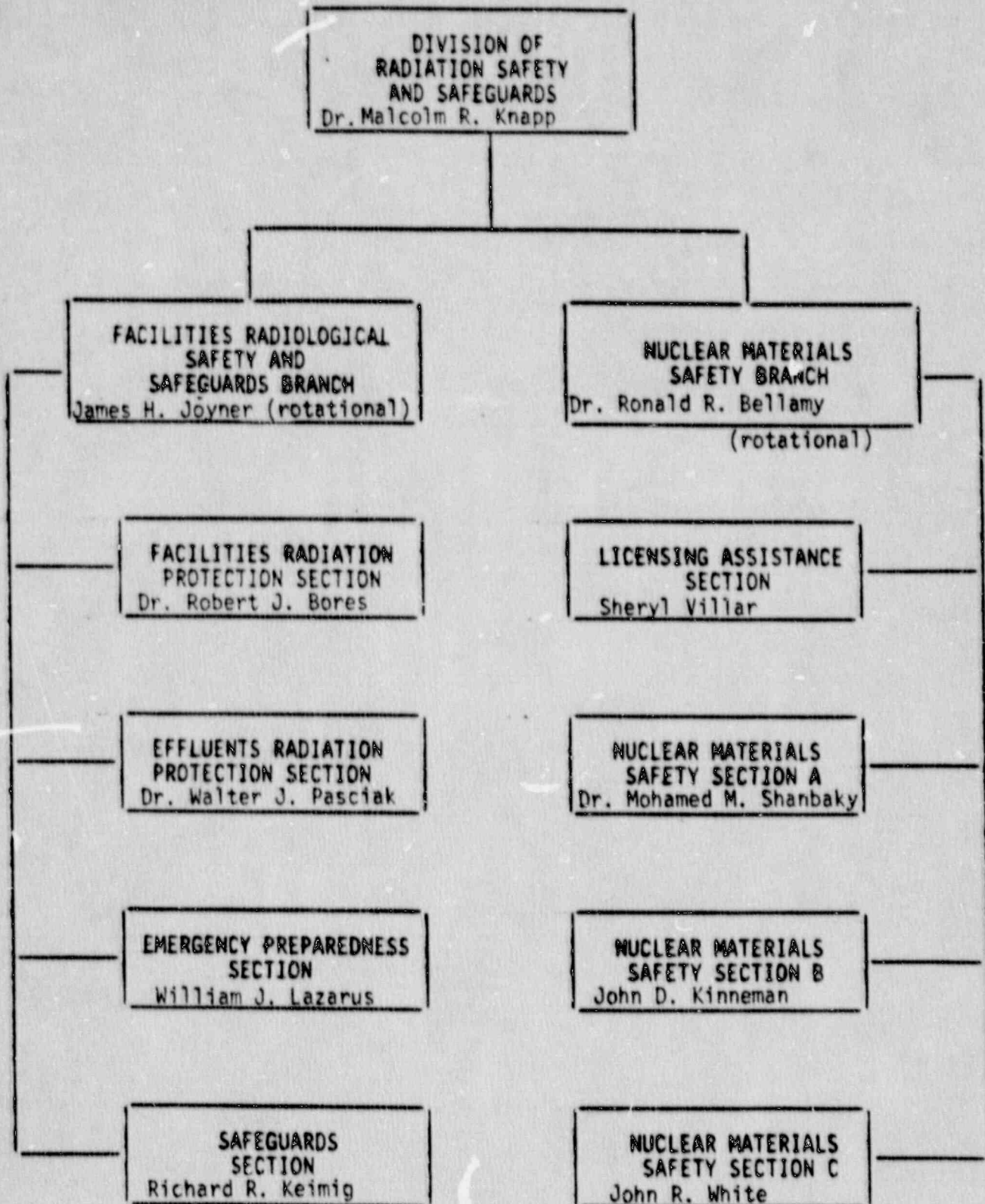
bcc w/encls:

Region I Docket Room (with concurrences)
Management Assistant, DRMA (w/o encl)
R. Bellamy, DRSS
J. Johnson, DRP
J. Rogge, DRP
T. Koshy, SRI - Yankee Rowe
J. Caldwell, EDO
S. H. Weiss, NRR/PDNP
RI Division Directors
RI Branch Chiefs

ORGANIZATION CHART



----- Indicates Public Affairs Staff reports indirectly to the Regional Administrator.



DRSS ORGANIZATIONAL STRUCTURE