

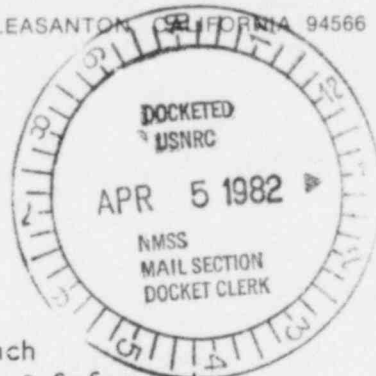
# GENERAL ELECTRIC

GENERAL ELECTRIC COMPANY, P.O. BOX 460, PLEASANTON, CALIFORNIA 94566

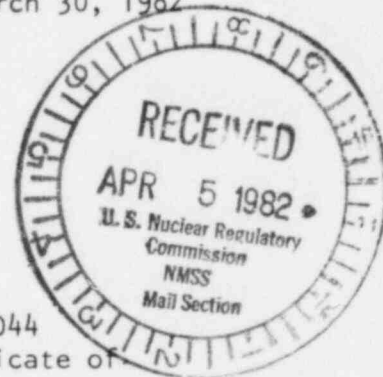
71-9044  
NUCLEAR ENERGY

ENGINEERING PDR

DIVISION Return to 39655



March 30, 1982



C. E. MacDonald, Chief  
Transportation Certification Branch  
Office of Nuclear Material Safety & Safeguards  
U.S. Nuclear Regulatory Commission  
Washington, D.C. 20555

- REFERENCE: 1) Certificate of Compliance No. 9044, Docket 71-9044  
2) Consolidated Application for Renewal for Certificate of Compliance No. 9044, February 1, 1982

Dear Mr. MacDonald:

As a result of my conversation with Mr. Williams of your staff on March 10, 1982, some minor changes were made to licensing drawing 129D4737 for the G.E. Model 1600 shipping container. Copies of the modified drawing are enclosed. This drawing should replace the one in Attachment F of our submittal of March 1, 1982 (Ref. 2).

Sincerely,

G. E. Cunningham  
Sr. Licensing Engineer

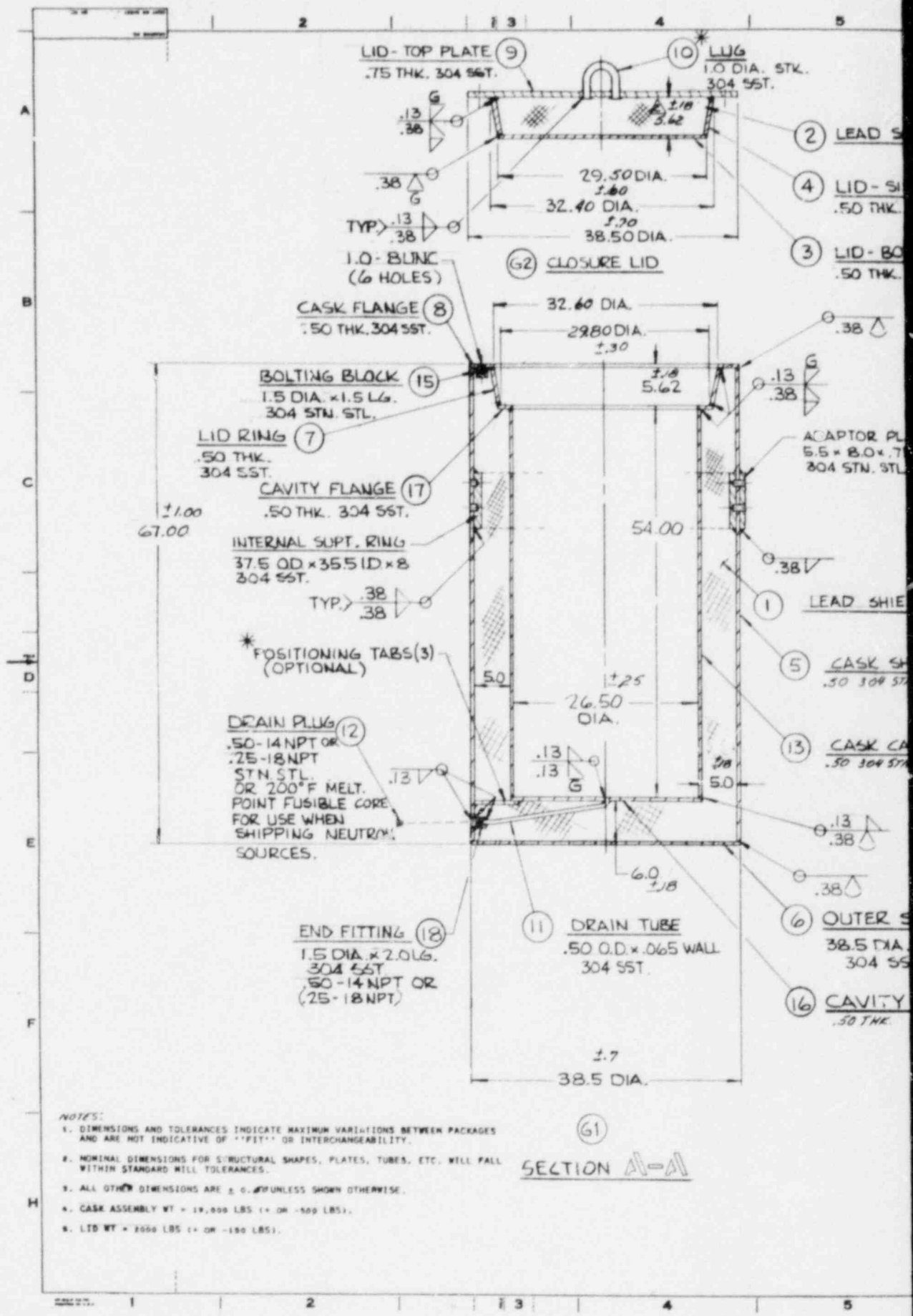


GEC:s1

RECEIVED  
APR 2 AM 11 09

4/5 FEE EXEMPT  
add'l info

20502



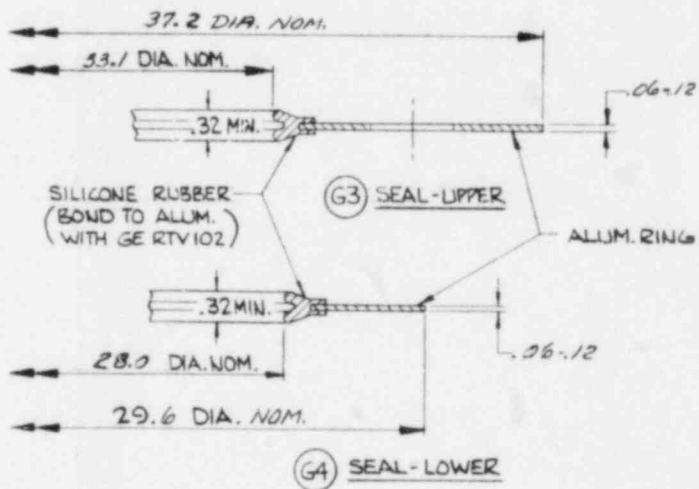
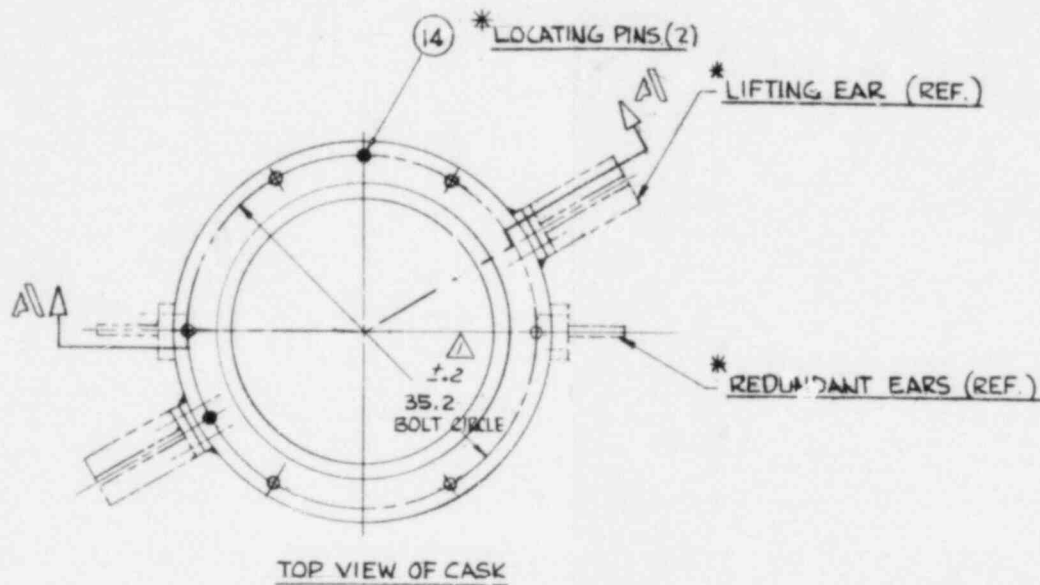
- NOTES:
1. DIMENSIONS AND TOLERANCES INDICATE MAXIMUM VARIATIONS BETWEEN PACKAGES AND ARE NOT INDICATIVE OF "FIT" OR INTERCHANGEABILITY.
  2. NOMINAL DIMENSIONS FOR STRUCTURAL SHAPES, PLATES, TUBES, ETC. WILL FALL WITHIN STANDARD MILL TOLERANCES.
  3. ALL OTHER DIMENSIONS ARE ± 0.00 UNLESS SHOWN OTHERWISE.
  4. CASK ASSEMBLY WT = 18,000 LBS (+ OR - 500 LBS).
  5. LID WT = 2000 LBS (+ OR - 100 LBS).

(G1)  
SECTION A-A

UNLESS OTHERWISE SPECIFIED USE THE FOLLOWING—			
APPLIED PRACTICES	SURFACES	TOLERANCES UNLESS OTHERWISE SPECIFIED	FINISHES
✓	✓	±.005	AS-BUILT

TITLE  
 MODEL 1600 SHIPPING CASK  
 PERFORMANCE CERTIFICATION Dwg.  
 NEXT ASSEM: 129D4735

LDING  
 PLATE  
 4 SST.  
 M PLATE  
 4 SST.  
 NG  
 Y SHELL  
 Z.  
 ELL BOTTOM  
 50 THK.  
 OTTOM PLATE  
 9 SST.



\* NOT SAFETY RELATED COMPONENT,  
 SHOWN FOR CLARITY ONLY.

DESCRIPTION OF GROUP	REVISIONS	PRINTS TO
NOT FOR FABRICATION	1 16-4929 12-22-81 16-4939	
	2 16-4939 1-6-82	
DATE: JULY 16, 80 BY: [Signature]	1 PO VNC	129D4737