

**Florida
Power**
CORPORATION

W. P. STEWART, DIRECTOR
POWER PRODUCTION

November 17, 1978

Mr. Robert W. Reid
Chief
Operating Reactors Branch #4
Division of Operating Reactors
U. S. Nuclear Regulatory Commission
Washington, D.C. 20555

Subject: Crystal River Unit 3
Docket No. 50-302
Operating License No. DPR-72

Dear Mr. Reid:

On November 9, 1978 we received your letter of November 2, 1978 requesting that Florida Power Corporation submit additional information concerning our proposed solution to the ECCS small break analysis problem.

In response to your request, Florida Power Corporation hereby submits the attached information for your staff's review.

If you require any further discussion concerning this matter, please contact this office.

Very truly yours,

FLORIDA POWER CORPORATION

W. P. Stewart

W. P. Stewart

Attachment

WPS/hew/W05
(11/16D5)

File: 3-0-3-a-3

7811246216 P

STATE OF FLORIDA

COUNTY OF PINELLAS

W.P. Stewart states that he is the Director, Power Production, of Florida Power Corporation; that he is authorized on the part of said company to sign and file with the Nuclear Regulatory Commission the information attached hereto; and that all such statements made and matters set forth therein are true and correct to the best of his knowledge, information and belief.

W.P. Stewart
W.P. Stewart

Subscribed and sworn to before me, a Notary Public in and for the State and County above named, this 17th day of November, 1978.

James H. Buckett
Notary Public

Notary Public, State of Florida at Large,
My Commission Expires: August 24, 1979

Response to Request for Additional Information

Question #1

Please provide schematic diagrams showing controls and indications related to motor-operated molded case breakers and electro-mechanical transfer switches.

Response:

The schematic diagrams for the motor-operated molded case breakers and electro-mechanical transfer switches are shown on Figures 3 and 4.

Indication will be provided by new selector switches (SS 1, 2, 3, 4) and existing valve position indicating lights.

Question #2

Label Figure 2 to show the normally open (NO) and normally closed (NC) alignment of the breakers in MCC's that supply the MUV's.

Response:

All breakers in MCC ES 3A1 and MCC ES 3B1 are normally closed. The normal status of the breakers in the new MCC sections is shown on Figure 2.

Question #3

To meet single failure criteria the motor-operated molded case breakers that are connected to separate ES MCC's should be physically separated. Verify that this will be the case.

Response

The motor-operated molded case breakers that are connected to separate ES MCC's will be physically separated.

Question #4

What is the earliest date by which this modification could be completed?

Response

This modification could be completed 31 weeks after NRC acceptance.

ELECTRIC MANUAL TRANSFER SCHEME

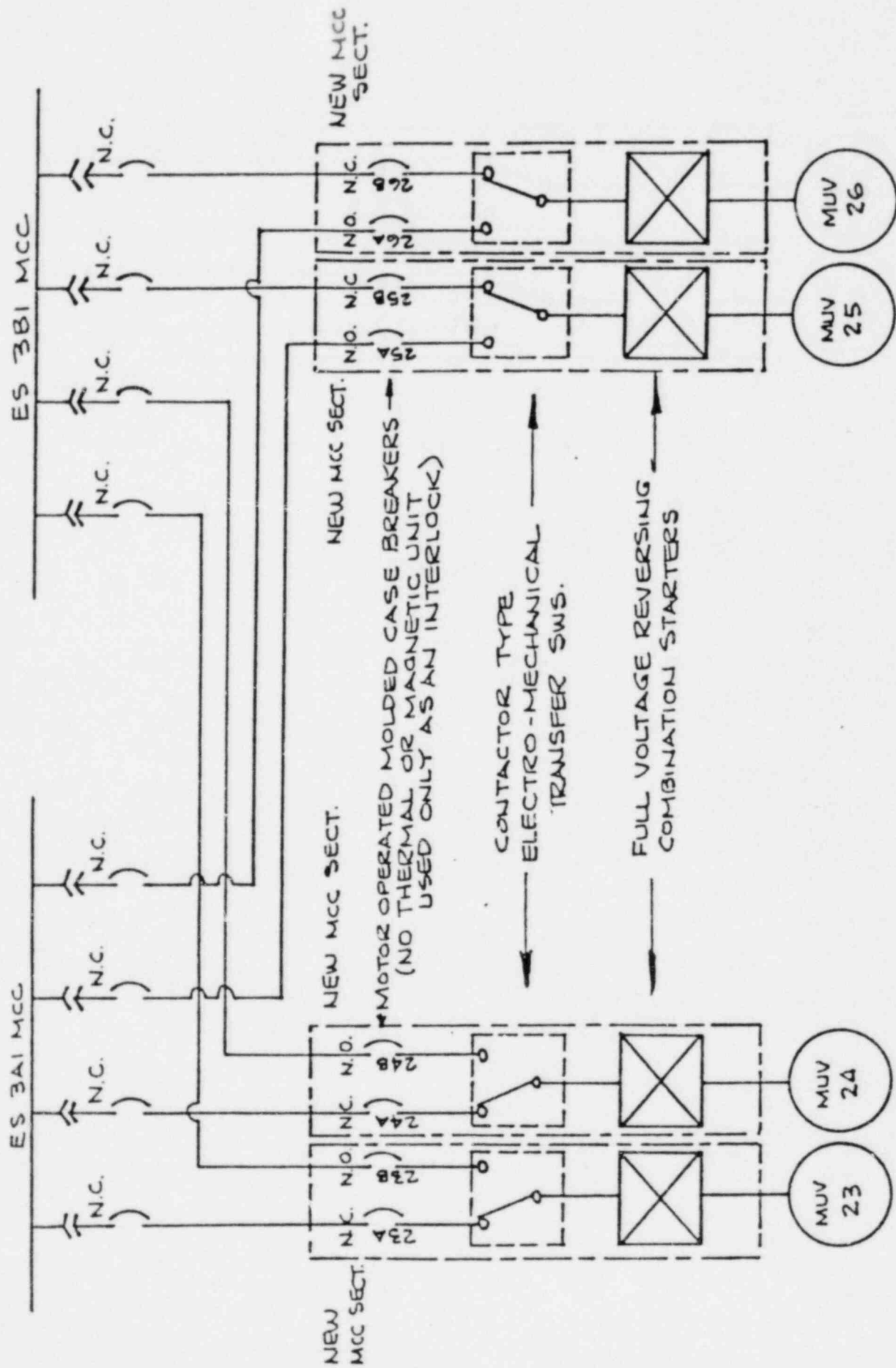


FIGURE 2

ECCS Small Pipe Break Analysis

ELECTRICAL MANUAL TRANSFER SCHEME

MOTOR-OPERATED MOLDED-CASE BREAKERS SCHEMATIC DIAGRAM

SS1,2,3,4 ARE 2-POSITION, MAINTAINED SELECTOR SWITCHES ON MAIN CONTROL BOARD.

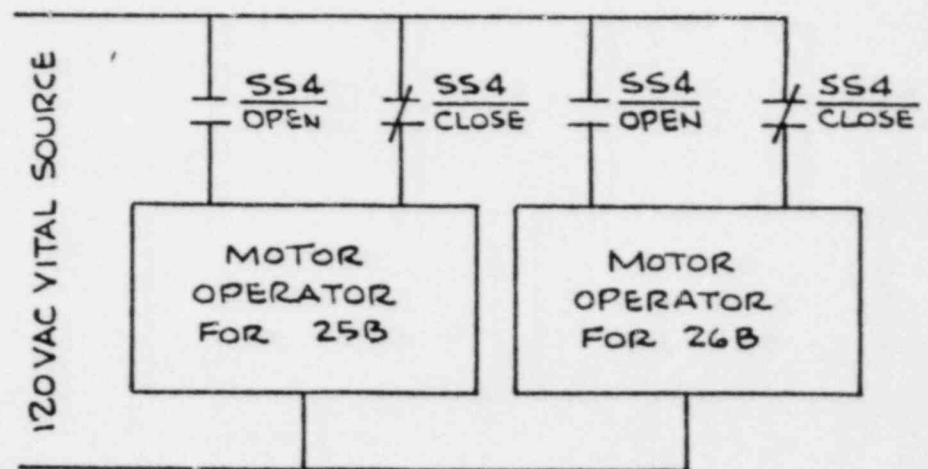
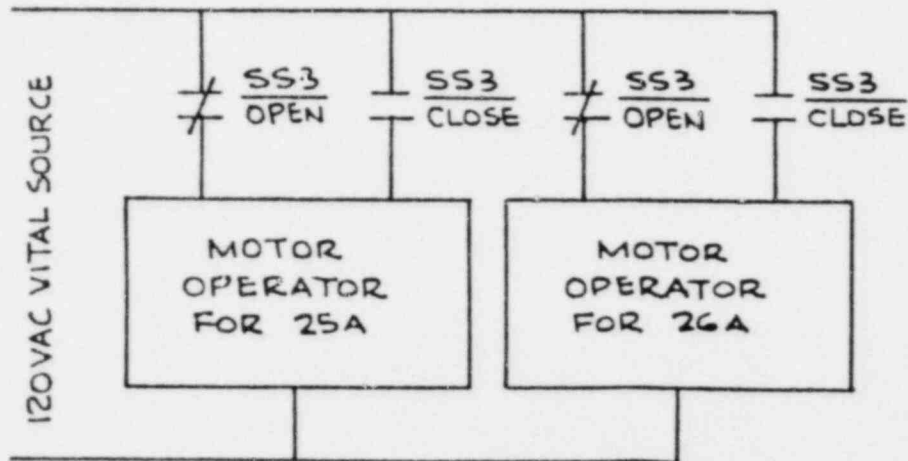
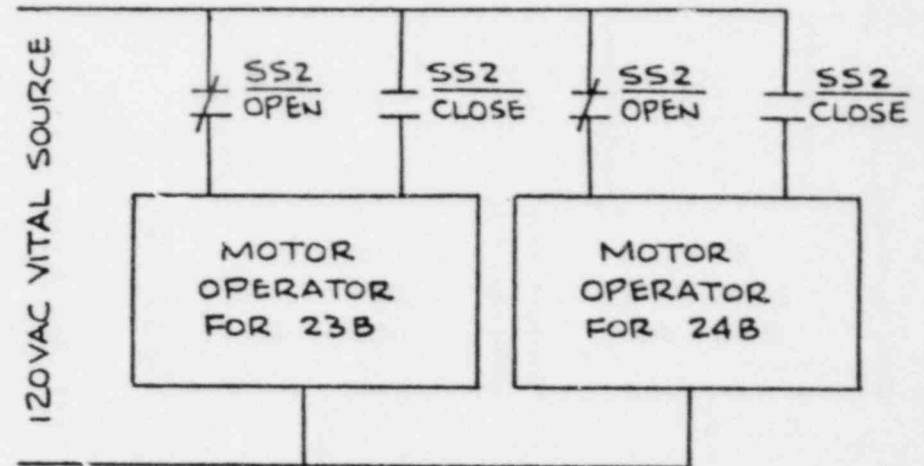
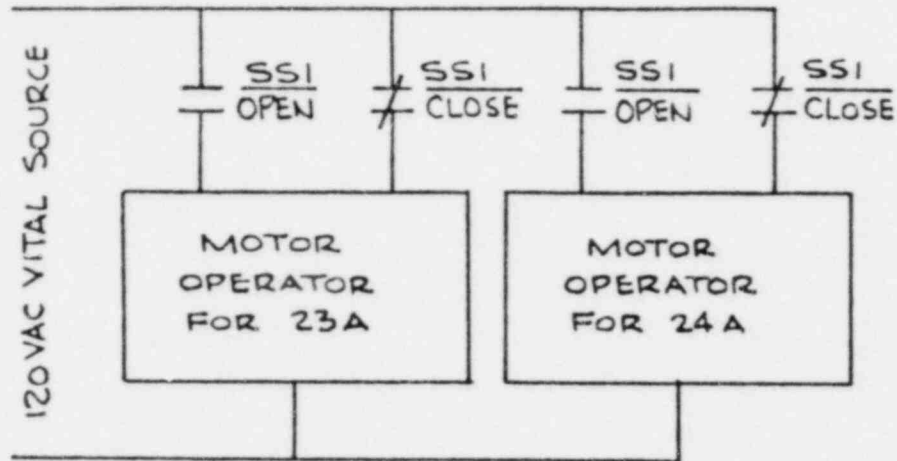


FIGURE 3

ECCS SMALL PIPE BREAK ANALYSIS
ELECTRICAL MANUAL TRANSFER SCHEME

ELECTRO-MECHANICAL TRANSFER SWITCH
SCHEMATIC DIAGRAM

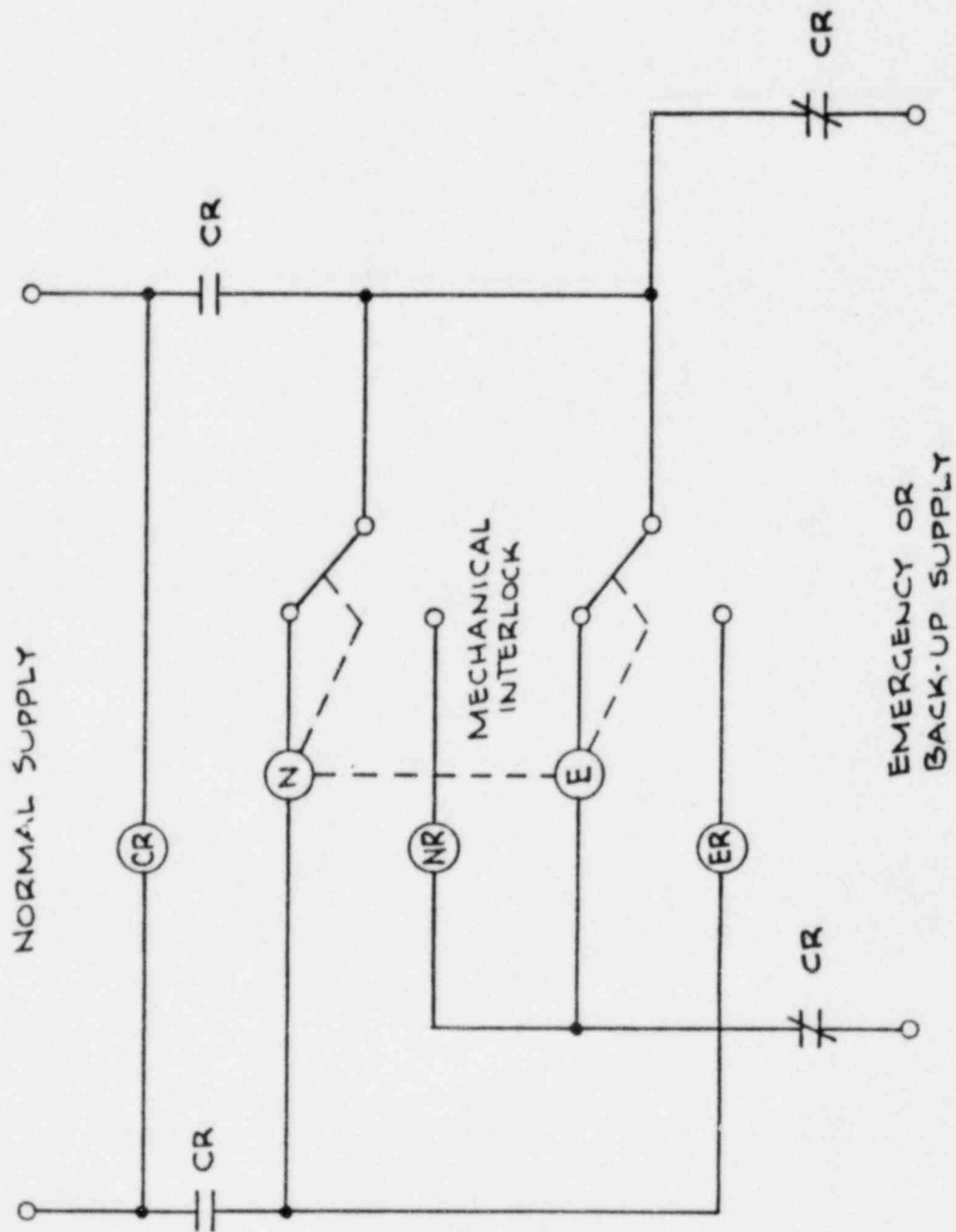


FIGURE 4