

NORTHWEST ENERGY SERVICES COMPANY

P O BOX 1090 • KIRKLAND, WASHINGTON 98033

February 22, 1982

NLN-19



Mr. Michael W. Mallory
Project Manager
Licensing Branch No. 4
Division of Licensing
U. S. Nuclear Regulatory Commission
Washington, D.C. 20555

Attn: Mr. H. Lafevre

Subject: Puget Sound Power & Light Company
Skagit/Hanford Nuclear Project, Units 1 & 2
Docket Nos. 50-522 and 50-523
Geological/Geophysical Data

Dear Mr. Mallory:

In answer to your telecon of February 18, 1982, enclosed are five copies of the figure submitted with WPPSS response to WNP-2 Question 360.20b showing geologic/geophysical data locations in the vicinity of Gable Mountain in the southeast anticline.

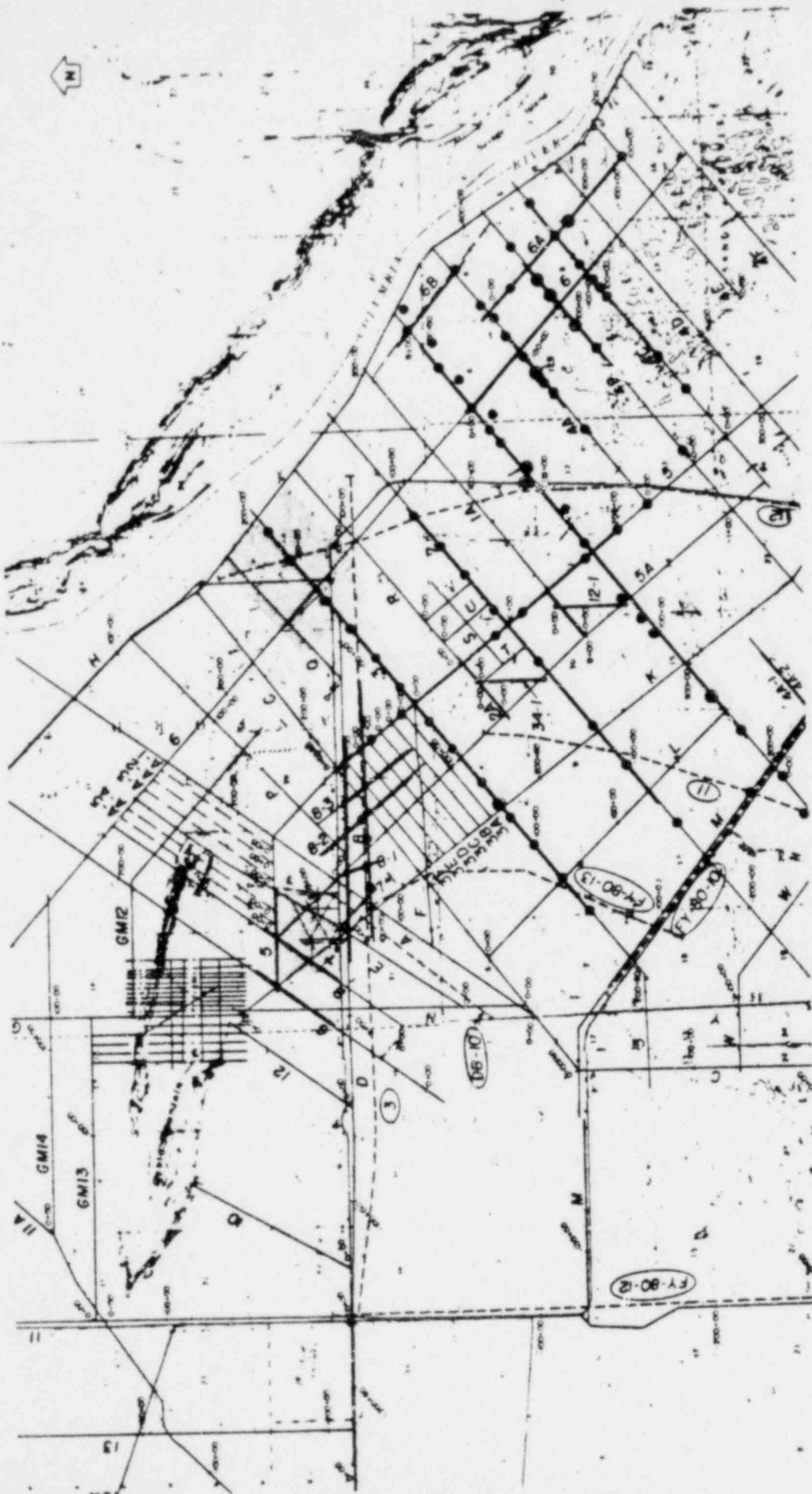
If you have any questions, please call.

Very truly yours,

J. E. Mecca
J. E. Mecca, Manager
Nuclear Licensing & Safety

BOO/
s
1/1

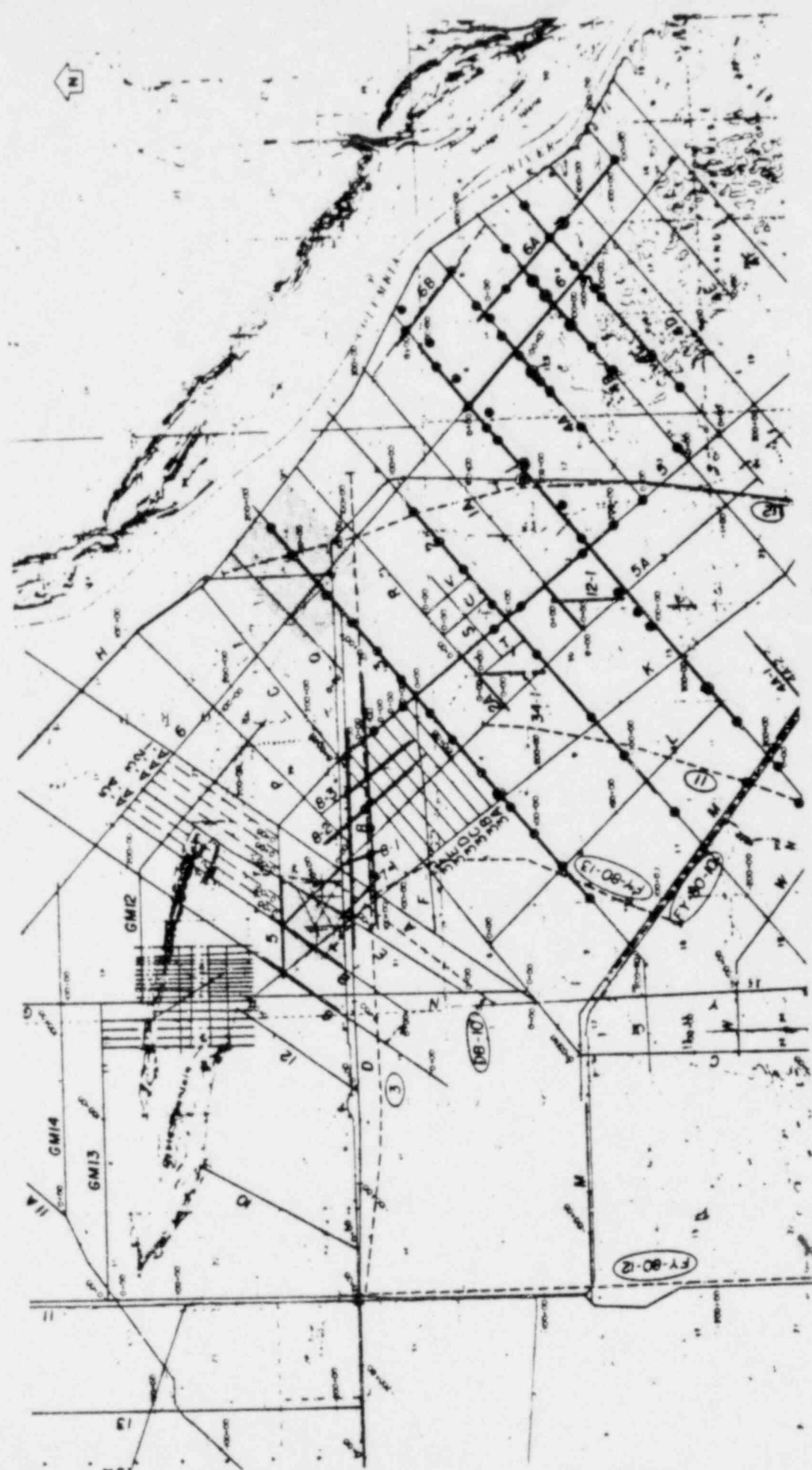
Encl.



- COMBINED GRAVITY AND MAGNETIC TRAVERSE (WITH STATION LOCATIONS)
- - - LAND MAGNETIC COVERAGE ONLY
- - - GRAVITY COVERAGE ONLY
- SEISMIC REFRACTION COVERAGE
- SEISMIC REFLECTION COVERAGE
- GRAVITY STATION
- CORE HOLE
- ROTARY HOLE
- LAND MAGNETIC DATA UNSUITABLE FOR INTERPRETATION DUE TO CULTURAL FEATURES

GEOPHYSICAL AND GEOLOGIC DATA
 GABLE MOUNTAIN AND
 S.E. ANTICLINE VICINITY

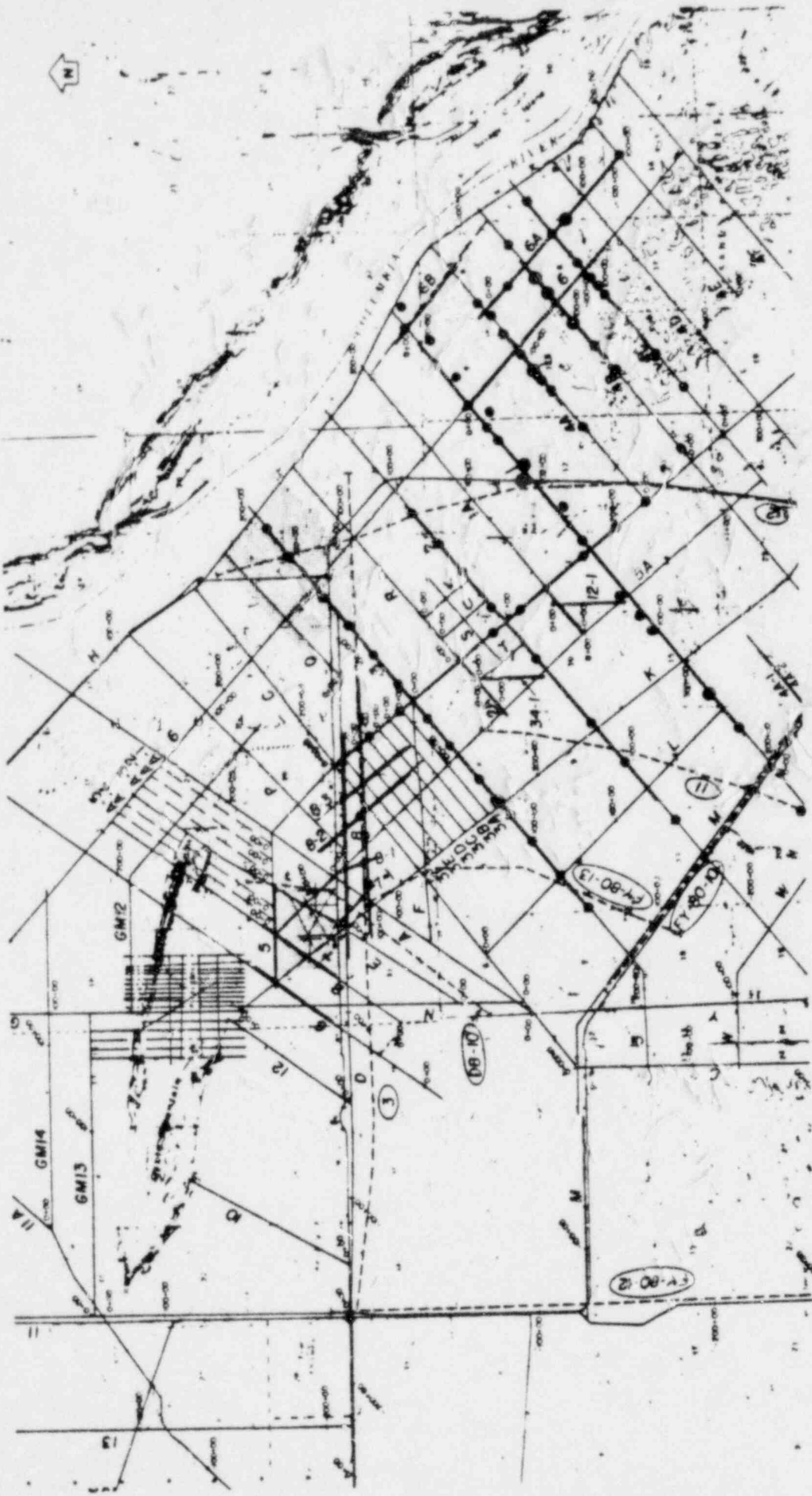
Attach to NLN-19



- COMBINED GRAVITY AND MAGNETIC TRAVERSE (WITH STATION LOCATIONS)
- - - LAND MAGNETIC COVERAGE ONLY
- - - GRAVITY COVERAGE ONLY
- SEISMIC REFRACTION COVERAGE
- SEISMIC REFLECTION COVERAGE
- GRAVITY STATION
- CORE HOLE
- ROTARY HOLE
- LAND MAGNETIC DATA UNSUITABLE FOR INTERPRETATION DUE TO CULTURAL FEATURES

GEOPHYSICAL AND GEOLOGIC DATA
GABLE MOUNTAIN AND
S.E. ANTICLINE VICINITY

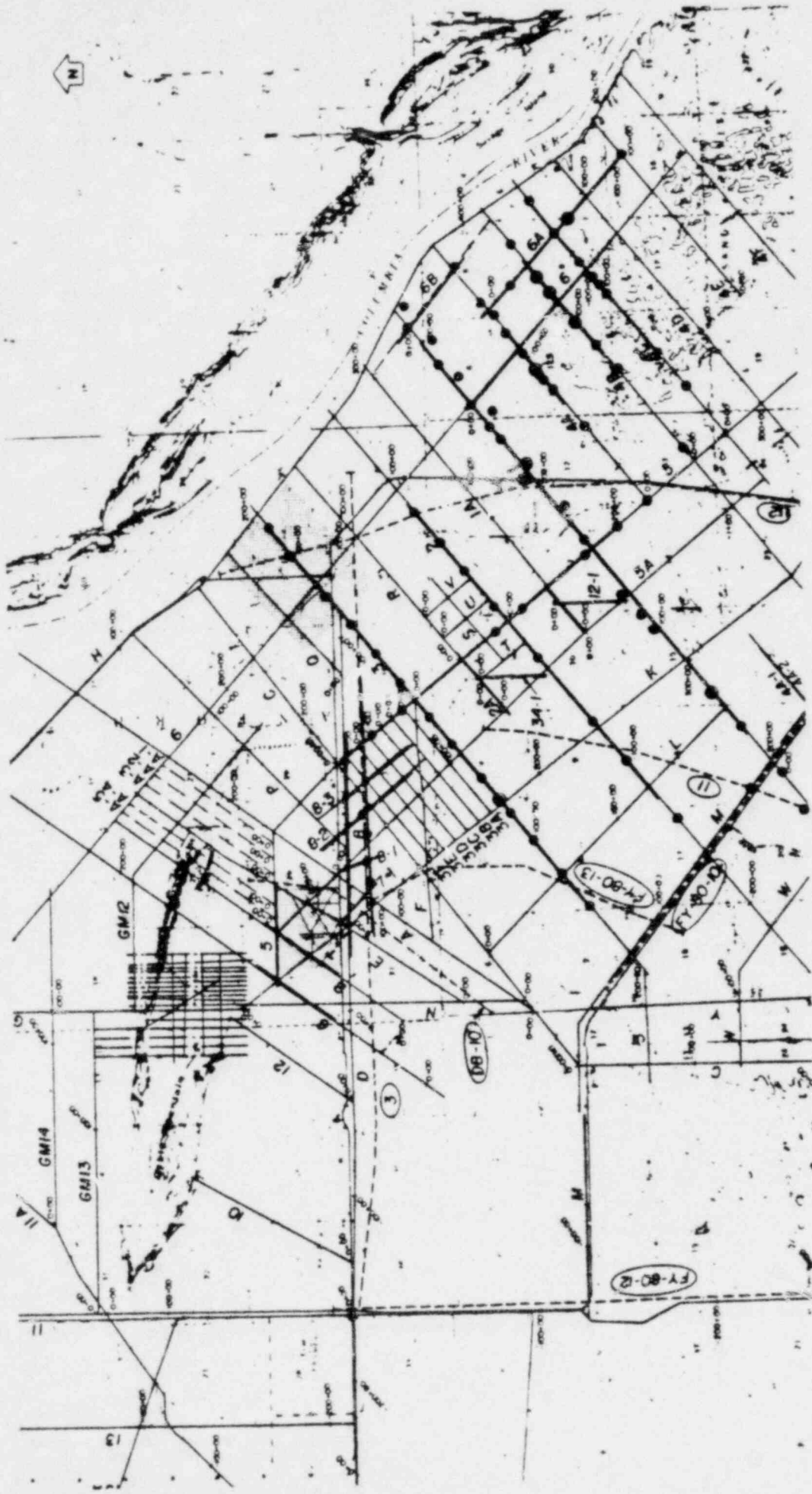
Attach to NW-19



- COMBINED GRAVITY AND MAGNETIC TRAVERSE (WITH STATION LOCATIONS)
- - - LAND MAGNETIC COVERAGE ONLY
- GRAVITY COVERAGE ONLY
- SEISMIC REFRACTION COVERAGE
- SEISMIC REFLECTION COVERAGE
- GRAVITY STATION
- CORE HOLE
- ROTARY HOLE
- LAND MAGNETIC DATA UNSUITABLE FOR INTERPRETATION DUE TO CULTURAL FEATURES

GEOLOGICAL AND GEOLOGIC DATA
 GABLE MOUNTAIN AND
 S.-E. ANTICLINE VICINITY

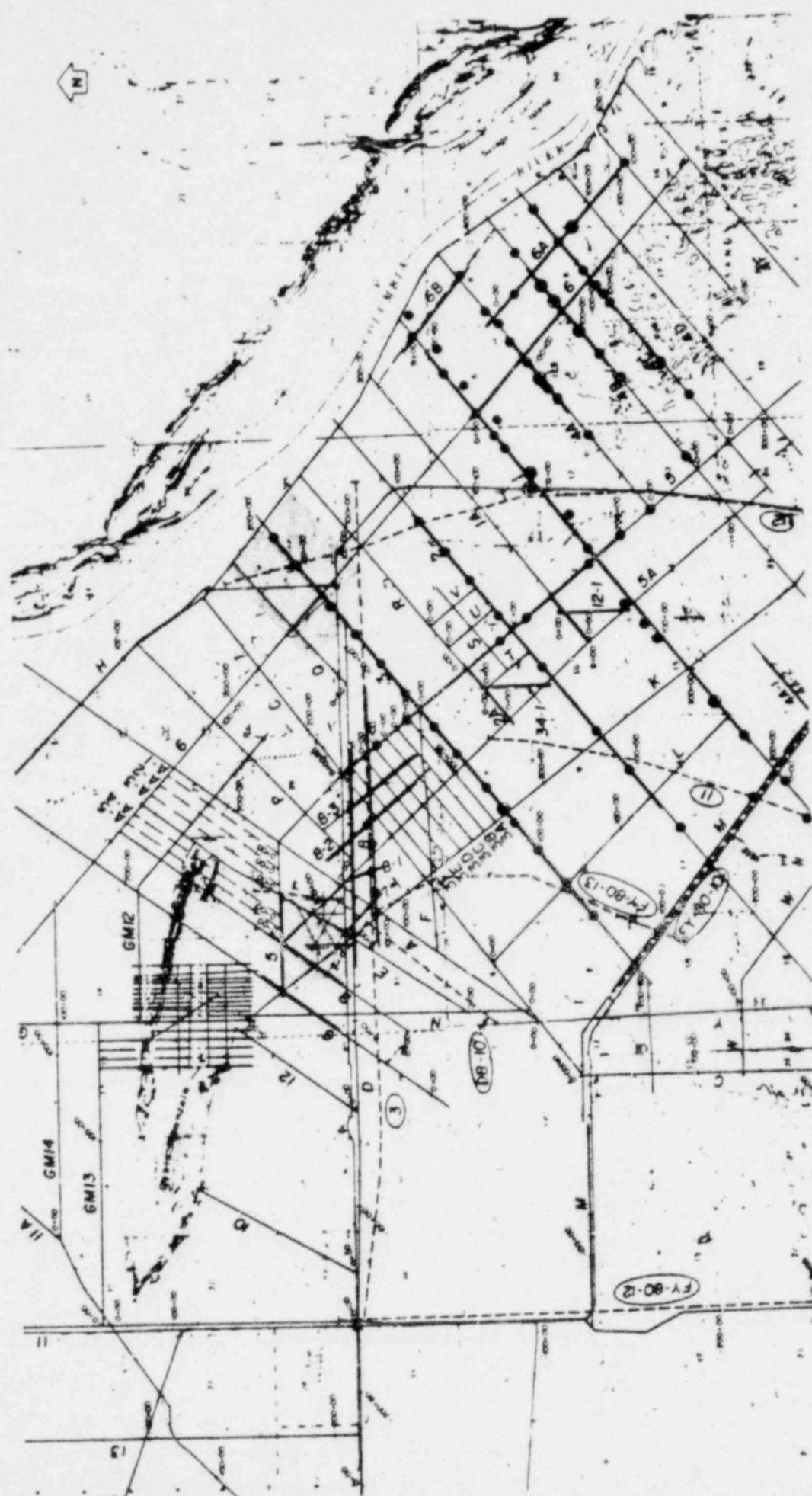
Attach to NN-19



- COMBINED GRAVITY AND MAGNETIC TRAVERSE (WITH STATION LOCATIONS)
- - - LAND MAGNETIC COVERAGE ONLY
- GRAVITY COVERAGE ONLY
- SEISMIC REFRACTION COVERAGE
- - - SEISMIC REFLECTION COVERAGE
- GRAVITY STATION
- CORE HOLE
- ROTARY HOLE
- LAND MAGNETIC DATA UNSUITABLE FOR INTERPRETATION DUE TO CULTURAL FEATURES

GEOPHYSICAL AND GEOLOGIC DATA
 GABLE MOUNTAIN AND
 S.E. ANTICLINE VICINITY

Attach to UCN-19



- COMBINED GRAVITY AND MAGNETIC TRAVERSE (WITH STATION LOCATIONS)
- - - LAND MAGNETIC COVERAGE ONLY
- GRAVITY COVERAGE ONLY
- SEISMIC REFRACTION COVERAGE
- SEISMIC REFLECTION COVERAGE
- GRAVITY STATION
- CORE HOLE
- ROTARY HOLE
- LAND MAGNETIC DATA UNSUITABLE FOR INTERPRETATION DUE TO CULTURAL FEATURES

GEOPHYSICAL AND GEOLOGIC DATA
GABLE MOUNTAIN AND
S.E. ANTICLINE VICINITY

Attach to NN-19