

POWER AUTHORITY OF THE STATE OF NEW YORK

JAMES A. FITZPATRICK NUCLEAR POWER PLANT

Revised "Application for Amendment to Operating License"
regarding Reload 4/Cycle 5.

REMOVE PAGE

vii - (List of Figures)

47b - (Figure 3.1-2)

SUBSTITUTE PAGE(S)

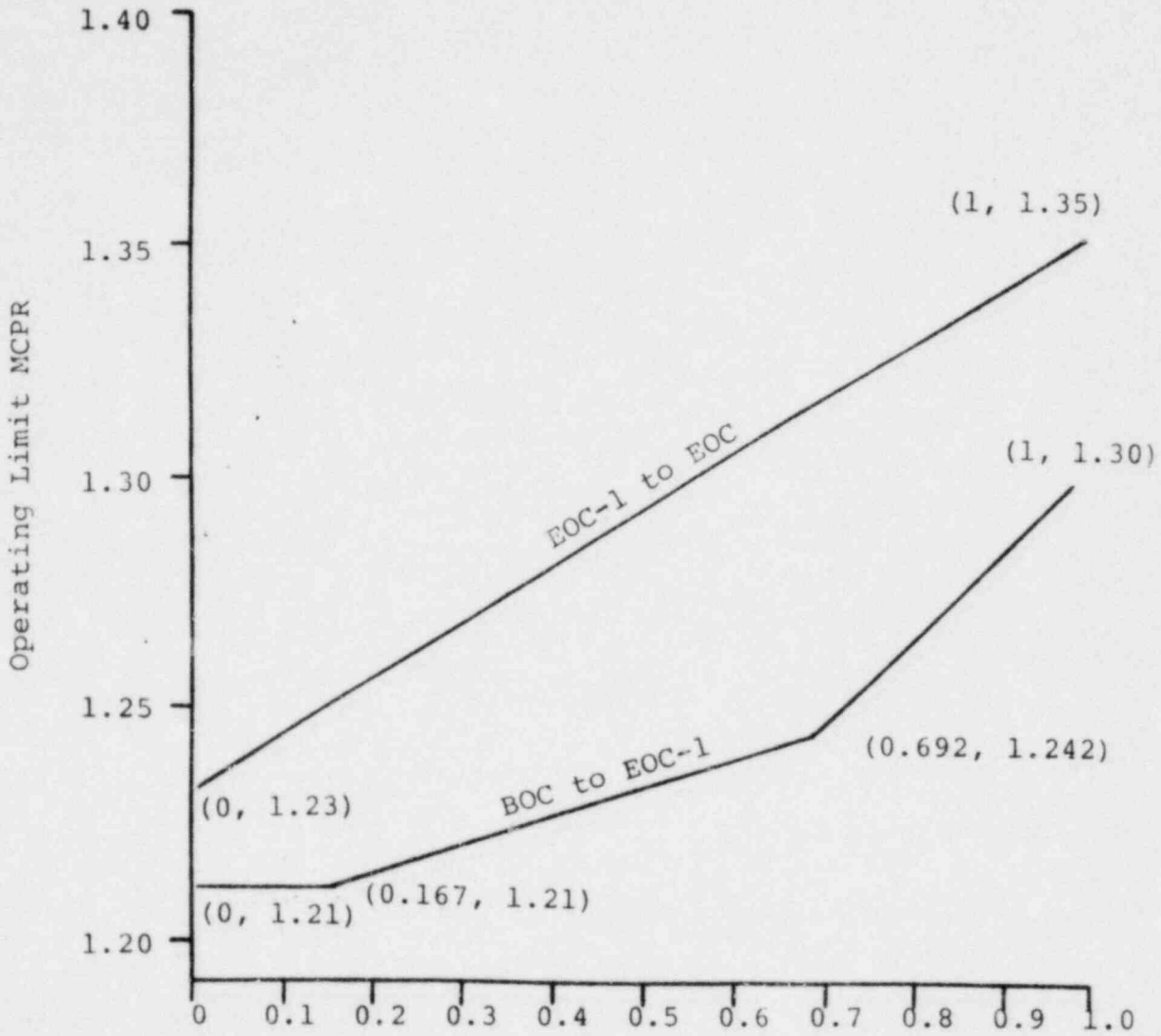
vii

47b - (Figure 3.1-2a),
47c - (Figure 3.1-2b),
47d - (Figure 3.1-2c)

JAFNPP
LIST OF FIGURES

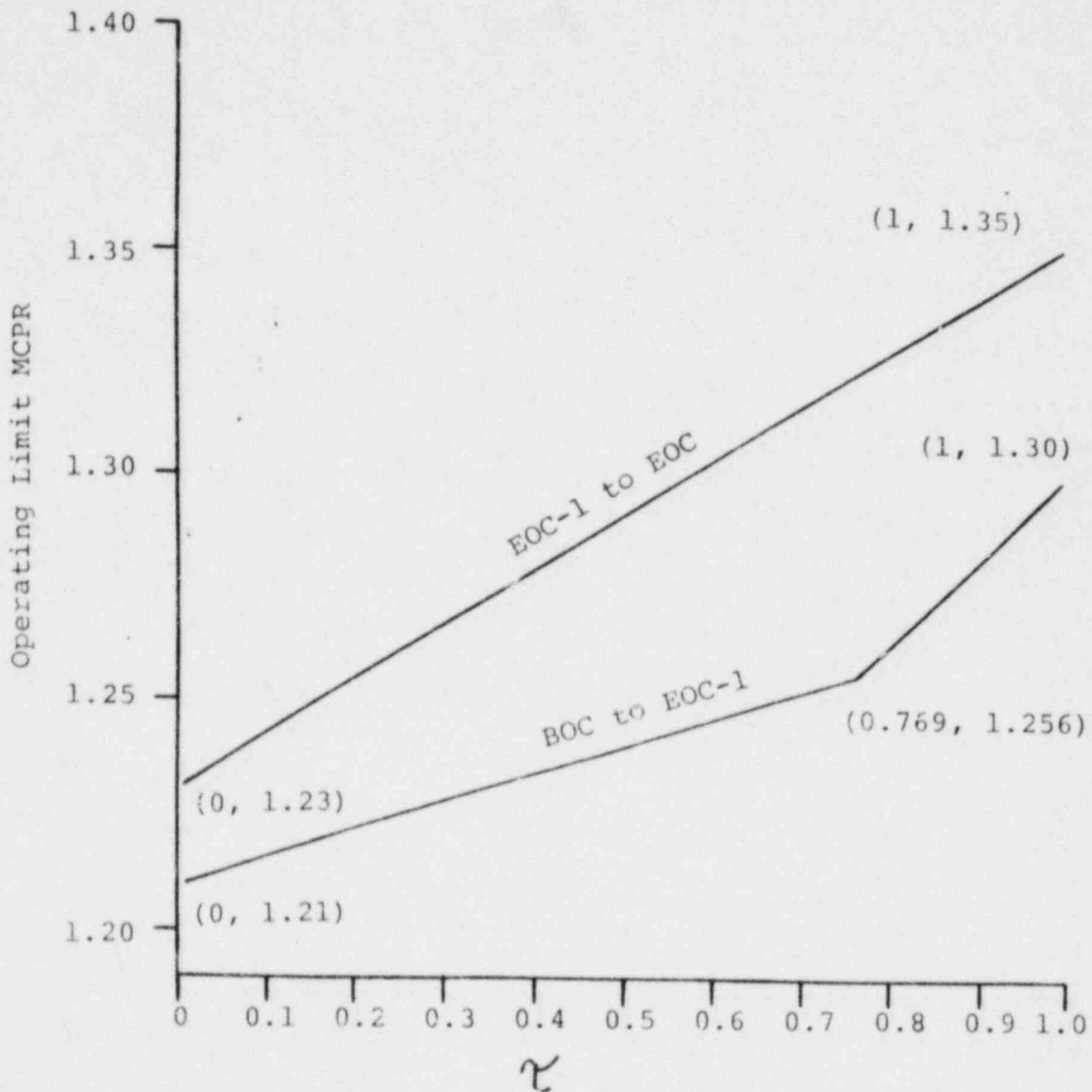
| <u>Figure</u> | <u>Title</u> | <u>Page</u> |
|---------------|--|-------------|
| 1.1-1 | APRM Flow Bias Scram Relationship to Normal Operating Conditions | 23 |
| 3.1-1 | Manual Flow Control | 47a |
| 3.1-2a | Operating Limit MCPR versus τ For 8X8 Fuel Types | 47b |
| 3.1-2b | Operating Limit MCPR versus τ For 8X8R Fuel Types | 47c |
| 3.1-2c | Operating Limit MCPR versus τ For P8X8R Fuel Types | 47d |
| 4.1-1 | Graphical Aid in the Selection of an Adequate Interval Between Tests | 48 |
| 4.2-1 | Test Interval vs. Probability of System Unavailability | 87 |
| 3.4-1 | Sodium Pentaborate Solution Volume-Concentration Requirements | 110 |
| 3.4-2 | Saturation Temperature of Sodium Pentaborate Solution | 111 |
| 3.5-3 | MAPLHGR Versus Planar Average Exposure Reload 1, 8D274L | 135a |
| 3.5-4 | MAPLHGR Versus Planar Average Exposure Reload 1, 8D274H | 135b |
| 3.5-5 | MAPLHGR Versus Planar Average Exposure Reload 2, 8DRB265L | 135c |
| 3.5-6 | MAPLHGR Versus Planar Average Exposure Reload 2, 8DRB283 | 135d |
| 3.5-7 | MAPLHGR Versus Planar Average Exposure Reload 3, P8DRB265L | 135e |
| 3.5-8 | MAPLHGR Versus Planar Average Exposure Reload 3, P8DRB283 | 135f |
| 3.5-9 | MAPLHGR Versus Planar Average Exposure Reload 4, P8DRB284L | 135g |
| 3.5-10 | MAPLHGR Versus Planar Average Exposure Reload 4, P8DRB299 | 135h |
| 3.6-1 | Reactor Vessel Thermal Pressurization Limitations | 163 |
| 4.6-1 | Chloride Stress Corrosion Test Results at 500°F | 164 |
| 6.1-1 | Management Organization Chart | 259 |
| 6.2-1 | Plant Staff Organization | 260 |

FIGURE 3.1-2a
 Operating Limit MCPR Versus τ (Section 4.1.E)
 For 8x8 Fuel Types



Option B $\tau = 0$
 Option A $\tau = 1$

FIGURE 3.1-2b
 Operating Limit MCPR Versus τ (Section 4.1.E)
 For 8X8R Fuel Types



Option B $\tau = 0$
 Option A $\tau = 1$

FIGURE 3.1-2c
 Operating Limit MCPR Versus τ (Section 4.1.E)

For P8X8R Fuel Types

