

ENGINEERING CONTROL DIRECTIVE

TITLE Corporate Emergency Response Procedures

DATE 5/14/81

PAGE 1 of 8

REVIEWED BY CR Luoma 5-14-81
/DateAPPROVED BY Carl Gustaf 5/18/81
Superintendent-Nuclear Power/Date1.0 Purpose

This directive describes the response of the Corporate Nuclear Engineering Staff (CNES) members to an activation of the Kewaunee Nuclear Power Plant's Radiological Emergency Response Plan (emergency plan).

2.0 Applicability

This directive applies to the members of the CNES following their notification of the activation of the emergency plan.

3.0 Definitions

- 3.1 Emergency Director - The Plant Manager or his designated alternate, is responsible for overall supervision of emergency activities implemented within the facility. The Emergency Director will keep the Emergency Response Manager informed of changing plant/emergency conditions.
- 3.2 Emergency Operations Facility (EOF) - An area in the training building, serving as the center for interaction with state and local authorities, NRC emergency response activities and a general assembly area that may be used for special press briefings.
- 3.3 Emergency Response Manager - The Assistant Manager, Nuclear Power or his designated alternate responsible for direction and management of all emergency activities within the EOF and provide for additional off-site resources required to respond to the emergency.
- 3.4 Radiation Protection Director - The Plant Services Superintendent or his designated alternate.
- 3.5 Kewaunee County EOC - (416 Fremont Street, Algoma, WI) Operations Center for the Kewaunee County Emergency Government organization.

4.0 Responsibilities

4.1 Emergency Response Manager

- 4.1.1 The Emergency Response Manager provides the overall direction of the Emergency Operations Facility (EOF) after arriving at the plant site in response to a request for headquarters staff support.
- 4.1.2 The Emergency Response Manager is responsible for the overall coordination of offsite support agencies and for assuring continuity of resources for long term operation of the response organization.

ENGINEERING CONTROL DIRECTIVE

TITLE Corporate Emergency Response Procedure

DATE 5/14/81

PAGE 2 of 8

- 4.1.3 The Emergency Response Manager determines the extent of the CNES response required.
- 4.1.4 The Emergency Response Manager will notify appropriate off-site agencies when the emergency has been terminated.
- 4.1.5 The Emergency Response Manager will be immediately informed of any change of emergency classification by the Emergency Director.

5.0 Requirements

The CNES response is keyed by the level of emergency classification determined by on-site personnel. Accordingly, the following requirements are keyed to the emergency classification (Reference Kewaunee Administrative Directive 12.2 for classification criteria).

5.1 Unusual Event

The role of the Emergency Response Manager is not defined for an Unusual Event, however, contact is established with the corporate management via an information call from the Emergency Director to the management designee for the Emergency Response Manager in accordance with ACD 12.3, Unusual Event.

- 5.1.1 The management designee will advise the Public Information Department of the condition and assist in the preparation of a public statement.
- 5.1.2 The management designee will assure that the Public Service Commission is advised of the outage (Manager, Nuclear Power makes notification).

5.2 Alert

- 5.2.1 The position of Emergency Response Manager is formally designated at this classification.
- 5.2.2 The Emergency Response Manager assures that notification requirements for an Unusual Event have been completed.
- 5.2.3 The Emergency Response Manager notifies the Public Information Department of the Alert condition.
- 5.2.4 The Emergency Response Manager notifies the Lakeshore Division Manager of the Alert condition.
- 5.2.5 The Emergency Response Manager initiates the request for other company resources if conditions warrant.

ENGINEERING CONTROL DIRECTIVE

TITLE Corporate Emergency Response Procedure

DATE 5/14/81

PAGE 3 of 8

5.2.6 Emergency Response Manager determines the need for CNES response. This determination may be based upon plant status or requests from the plant.

5.3 Site Emergency

5.3.1 The Emergency Response Manager notifies the Public Information Department of the Site Emergency condition.

5.3.2 The Emergency Response Manager notifies the Lakeshore Division Manager of the Site Emergency condition.

5.3.3 The Emergency Response Manager will meet with the Emergency Director upon arriving at the site. This briefing may be waived if the Emergency Response Manager has been briefed prior to this arrival, if the Emergency Director is unavailable (and designates a briefing by an alternate member of the TSC staff), or if conditions prohibit face-to-face contact.

5.3.4 The Emergency Response Manager activates the Emergency Operations Facility. Prior to establishing operations from the facility, the Emergency Response Manager will contact the Radiological Protection Director to assure unlimited habitability or establish a maximum stay time. (Radiation monitoring will be established in the EOF).

5.3.5 The Emergency Response Manager will verify the actions on the EOF activation checklist (Table 1) have been performed.

5.3.6 Upon adequate staffing of the EOF, continuing contact with off-site support agencies will be transferred to the EOF.

5.3.7 The Emergency Response Manager determines the need for CNES support.

5.3.8 The Emergency Response Manager may dispatch a representative to the Kewaunee County Emergency Operations Center (EOC).

5.4 General Emergency

5.4.1 The Emergency Response Manager notifies the Public Information Department of the General Emergency condition.

5.4.2 The Emergency Response Manager notifies the Lakeshore Division Manager of the General Emergency condition.

5.4.3 The Emergency Response Manager determines the need for CNES response.

ENGINEERING CONTROL DIRECTIVE

TITLE Corporate Emergency Response Procedure

DATE 5/14/81

PAGE 4 of 8

5.4.4 The Emergency Response Manager provides the overall direction of the EOF including recommendations to the state to initiate predetermined protective actions for the public.

ENGINEERING CONTROL DIRECTIVE

TITLE Corporate Emergency Response Procedure

DATE 5/14/81

PAGE 5 of 8

Table 1EOF Activation Checklist

1. Start time:
2. _____ Contact Radiation Protection Director and inform him of activation of the EOF and the need for radiation monitoring.
3. _____ Activate EOF following approval from Radiation Protection Director.
4. _____ Record EOF activation started in Log Book.
5. _____ Verify Communication capability with the Technical Support Center.
6. _____ Verify communication capability of State NAWAS Network.
7. _____ Notify necessary corporate staff and request that they report to the site. List individuals contacted.

ENGINEERING CONTROL DIRECTIVE

TITLE Corporate Emergency Response Procedure

DATE 5/14/81

PAGE 6 of 8

Table 2Emergency Response Manager Designee and Alternates

1. Assistant Manager, Nuclear Power (C. R. Luoma)
2. Manager, Nuclear Power (C. W. Giesler)
3. Nuclear Services Supervisor (K. H. Weinbauer)

Responsibilities According to Emergency Classification

Action to be taken	Unusual Event	Alert	Site Emergency	General Emergency
Notify Public Information	1	1	1	1
Assure notification of Public Service Commission of Wisconsin	1	2	2	2
Notify Lakeshore Division Manager	*	1	1	1
Notify Support Staff	←----- As --- Needed ----->			
Dispatch Representative to EOC (if requested)	*	*	1	2
Activate the EOF	*	*	1	2

1 - Initiate Action

2 - Verify lower event classification action performed.

* - No action necessary.

ENGINEERING CONTROL DIRECTIVE

TITLE Corporate Emergency Response Procedure

DATE 5/14/81

PAGE 7 of 8

Table 3Notification Phone ListCorporate Nuclear Engineering Staff
(alphabetically)

	<u>Office (433-)</u>	<u>Home No.</u>	<u>Pager No.</u>
Draheim, R. E.			
Giesler, C. W.			
Luoma, C. R.			
Morrison, J. N.			
Nalepka, D. S.			
Ristau, D. J.			
Sauer, D. W.			
Schneider, D. P.			
Schrock, C. A.			
Thorgersen, J. G.			
Wallace, J. J.			
Weinhauer, K. H.			
Will, D. J.			

Mike Kiefer
Public Information Director
Office:
Home:

Jim Derbique
Lakeshore Division Manager
Office: Internal
Office: External
Home:

Green Bay Transmitter:

Kewaunee Transmitter:

* When activating Green Bay transmitter, dial 1 before pager number.

NOTE: USE PUSH BUTTON PHONE WHEN USING PAGER SYSTEM.

ENGINEERING CONTROL DIRECTIVE

TITLE Corporate Emergency Response Procedure

DATE 5/14/81

PAGE 8 of 8

Table 4

SUPPORT AGENCIES - COMMERCIAL PHONE NUMBERS

NRC - Region III - Chicago Operations Office		1
Wisconsin Division of Emergency Government		1
East Central Area Office of Emergency Government - Fond du Lac		1
State Police - Fond du Lac		1
Kewaunee County (Sheriff's Department)		1
Kewaunee County Emergency Government (EOC)		1
Manitowoc County (Sheriff's Department)		1
Manitowoc County Emergency Government Director		1
Department of Energy	Day Night	
Point Beach Nuclear Power Plant		1
U.S. Coast Guard	(Day) (Night)	1 1
Medical Assistance		
Two Rivers Hospital		1
Dr. Weld/Dr. Kaner		1
U.W. Hospital		1
Dr. Larson		1
American Nuclear Insurers		1
Westinghouse	(Day) (Night)	1 1
Fluor Power Services		
C. E. Agan, Director	(Office) (Home)	1 1
T. L. Roell, Alternate	(Office) (Home)	1 1
Public Service Commission of Wisconsin		1

KEWAUNEE NUCLEAR POWER PLANT

ADMINISTRATIVE CONTROL DIRECTIVE

NO.

ACD 12.1 REV. G

TITLE Kewaunee Emergency
Organizational Structure

DATE MAR 31 1981

PAGE 1 OF 11

REVIEWED BY

C. J. Payne

APPROVED BY

*D. H. L.***1.0** PURPOSE

The purpose of this procedure is to describe the emergency organization for the Kewaunee Nuclear Power Plant and personnel responsibilities during an emergency.

2.0 APPLICABILITY

This procedure will apply to any declared emergency as defined in ACD 12.2, Emergency Classification Criteria.

3.0 DEFINITIONS**3.1** Key Emergency Organization Positions

1. SHIFT SUPERVISOR - the senior operations person on shift.
2. SHIFT TECHNICAL ADVISOR (STA) - An individual on-site when the plant is not in the cold or refueling shutdown modes who is specifically trained in plant accident assessment.
3. EMERGENCY DIRECTOR (ED) - The Plant Manager or his designated alternate.
4. EVENT OPERATIONS DIRECTOR (EOD) - The Operations Superintendent or his designated alternate.
5. TECHNICAL SUPPORT CENTER COORDINATOR (TSCC) - The Technical Supervisor or his designated alternate.
6. RADIOLOGICAL PROTECTION DIRECTOR (RPD) - The Plant Services Superintendent or his designated alternate.
7. SUPPORT ACTIVITIES DIRECTOR (SAD) - The Maintenance Superintendent or his designated alternate.
8. SECURITY DIRECTOR - The Plant Security/Administrative Supervisor or his designated alternate.
9. EMERGENCY RESPONSE MANAGER (ERM) - The Assistant Manager - Nuclear Power or his designated alternate.

NOTE: Figure 12.1-1 and Attachment show the functional emergency organization and the persons designated for each emergency organization position and their alternates.

KEWAUNEE NUCLEAR POWER PLANT
ADMINISTRATIVE CONTROL DIRECTIVE

NO. ACD 12.1

TITLE
Kewaunee Emergency
Organizational Structure

DATE MAR 31 1981

PAGE 2 OF 11

3.2 Emergency Action Groups

1. FIRE BRIGADE - Personnel on-site at all times trained in fire fighting.
2. FIRE TEAM - Additional plant staff personnel trained in fire fighting.
3. RADIATION EMERGENCY TEAM - Members of the Plant Radiation Protection and Chemistry Groups.
4. TECHNICAL SUPPORT CENTER STAFF - Plant and corporate staff with engineering and/or technical experience (Refer to ACD 12.8).
5. SECURITY FORCE - Members of the contract security organization.
6. STAND-BY SUPPORT PERSONNEL - Personnel with no assigned emergency response duties, including visitors, and contractors.

3.3 Emergency Facilities

1. Interim Technical Support Center - The assembly room in the Administration Building, which will serve as coordination center for engineering and/or management personnel supporting the operating staff during an emergency.
2. Emergency Operations Facility (EOF) - An area in the Training Building used as a headquarters for the Emergency Response Manager, which may house senior NRC and State and Local Government Officials. The EOF may be used to coordinate off-site radiological activities of support agencies.
3. Interim Operational Support Facility - The office area on the Turbine Building mezzanine level to be used as an assembly and staging area for maintenance and support personnel during an emergency.
4. Emergency Assembly Areas - Designated areas detailed in Figure 12.1-1 and Attachment where personnel shall assemble when notified of an emergency.
5. Site Access Facility - The trailer located on the West boundary of WP& property which may serve as an access control station for the Plant during a GENERAL EMERGENCY.

4.0 RESPONSIBILITIES

- 4.1 The emergency organization responsibilities listed below are assumed when an emergency has been declared and are in addition to normally assigned job responsibilities.

KEWAUNEE NUCLEAR POWER PLANT
ADMINISTRATIVE CONTROL DIRECTIVE

NO. ACD 12.1

TITLE
Kewaunee Emergency
Organizational Structure

DATE MAR 31 1981

PAGE 3 OF 11

4.1.1 THE SHIFT SUPERVISOR is responsible for evaluating plant conditions and determining if an emergency class as defined in ACD 12.2 exists. When an emergency is declared, the Shift Supervisor assumes the following additional responsibilities:

1. Directing the notification of personnel on-site of the emergency.
2. Ensuring that members of the emergency organization are notified of the emergency for the class of emergency declared.
3. Ensuring that initial off-site emergency response organizations and agencies are notified for the class of emergency declared.
4. Assessing the effects of the emergency and initiating on-site protective measures such as evacuation of certain plant areas or evacuation of all non-essential personnel from the site.
5. Obtaining the concurrence of the Event Operations Director before making any planned changes in plant operations.
6. Continuing evaluation of plant conditions to determine if a change in the emergency classification is warranted.

4.1.2 THE SHIFT TECHNICAL ADVISOR is responsible for:

1. Assisting the Shift Supervisor in the assessment of abnormal plant conditions, and in the determination of when an emergency as defined in ACD 12.2 exists.
2. Notifying members of the emergency organization of the emergency.
3. Notifying off-site emergency response organizations of the emergency.
4. Providing the Shift Supervisor with continuing assessment of plant conditions to ensure that adequate core heat removal capability is being maintained.
5. Providing essential technical information to off-site response agencies on a limited basis until relieved by the Technical Support Center Coordinator of that function, not to interfere with accident assessment activities or other assistance to the Shift Supervisor.

KEWAUNEE NUCLEAR POWER PLANT
ADMINISTRATIVE CONTROL DIRECTIVE

NO. ACD 12.1

TITLE
Kewaunee Emergency
Organizational Structure

DATE MAR 31 1981 PAGE 4 OF 11

4.1.3 THE EMERGENCY DIRECTOR is responsible for:

1. Overall supervision and direction of the on-site emergency response organization.
2. Determining emergency classifications per ACD 12.2.

4.1.4 THE EVENT OPERATIONS DIRECTOR is responsible for:

1. Under the direction of the Emergency Director, coordination of operations and control room activities during the emergency, through the Shift Supervisor.
2. Providing the Emergency Director with plant status updates to assist him in managing the emergency.
3. Maintaining communication with the Technical Support Center Staff concerning plant status and requests for technical assistance.

4.1.5 THE TECHNICAL SUPPORT CENTER COORDINATOR is responsible for:

1. Under the direction of the Emergency Director, coordinating the activities of the Technical Support Center Staff.
2. Providing plant status and assessment information periodically or as requested to technical personnel from off-site emergency response agencies.
3. Notifying on-site emergency personnel of changes in the emergency classification.

4.1.6 THE RADIOLOGICAL PROTECTION DIRECTOR is responsible for:

1. Under the direction of the Emergency Director, coordinating the activities of the Radiation Emergency Team.
2. Directing the analysis of radiological data gathered by the Radiation Emergency Team or transmitted by off-site agencies.
3. Directing in-plant radiation surveys in support of fire fighting, maintenance, repair or other emergency support activities.
4. Preparing radiological assessments and radiation dose predictions.
5. Making protective response recommendations.

KEWAUNEE NUCLEAR POWER PLANT
ADMINISTRATIVE CONTROL DIRECTIVE

NO.	ACD 12.1
TITLE	Kewaunee Emergency Organizational Structure
DATE MAR 31 1981	PAGE 5 OF 11

6. Carrying out requests for sampling and radiological analysis made by state and local government agencies.
 7. Providing plant and off-site radiological conditions to the Control Room and Technical Support Center Staff.
- 4.1.7 THE SUPPORT ACTIVITIES DIRECTOR is responsible for:
1. Under the direction of the Emergency Director, coordinating the activities of maintenance and support personnel during an emergency.
 2. Coordinating activities required to repair components damaged during the course of an emergency.
 3. Implementing requests by the Emergency Director for changes or modifications to systems or components required to stabilize plant conditions.
 4. Evaluating manpower, equipment, and material necessary to support the emergency organization.
- 4.1.8 THE SECURITY DIRECTOR is responsible for:
1. Under the direction of the Emergency Director, coordinating all security activities.
 2. Dispatching security personnel as required to control access to the site during an emergency.
 3. Ensuring that adequate security personnel are available to handle any needs.
 4. Directing a personnel accountability determination during an emergency and reporting results to the Emergency Director.
- 4.1.9 THE EMERGENCY RESPONSE MANAGER is responsible for:
1. Coordinating the activities of off-site groups with activities of the plant emergency organization.
 2. Notifying state and local emergency response agencies when the emergency classification has been changed.
 3. Directing acquisition of off-site equipment, supplies and personnel for support of plant emergency organization.
 4. Providing information to the Joint Press Information Center (JPIC) on the status of the emergency.

WISCONSIN PUBLIC SERVICE CORPORATION

KEWAUNEE NUCLEAR POWER PLANT
ADMINISTRATIVE CONTROL DIRECTIVE

NO. ACD 12.1

TITLE Kewaunee Emergency
Organizational Structure

DATE MAR 31 1981 PAGE 6 OF 11

4.2 Emergency Action Groups.

4.2.1 THE FIRE BRIGADE members on-shift are responsible for:

1. Responding to fire alarms by reporting to their assembly areas.
2. Fighting fires within the protected area.
3. Notifying the control room of the status of fires and determining if additional fire fighting assistance is required.

4.2.2 THE FIRE TEAM members are responsible for:

1. Responding to fire emergencies during working hours by reporting to their assembly area.
2. Reporting to the plant when off-site, if they receive a pager signal/message or notification of a fire at the plant.
3. Fighting fires at the plant.
4. Notifying the control room of the status of fires and determining if additional fire fighting assistance is required.

4.2.3 THE RADIATION EMERGENCY TEAM members are responsible for:

1. Reporting to the plant when off-site if they receive a pager signal/message or notification of a radiation emergency at the plant.
2. Performing in-plant radiological surveys as directed by the Radiological Protection Director or in his absence by the on-shift radiation protection man.
3. Performing off-site radiological surveys and taking off-site environmental samples as directed by the Radiological Protection Director or in his absence by the on-shift radiation protection man.
4. Performing dose assessments and dose predictions based on survey and sample data and meteorological condition information.

4.2.4 THE TECHNICAL SUPPORT CENTER STAFF members are responsible for:

1. Reporting to the plant when off-site if they receive a pager signal/message or notification of a plant emergency.
2. Activating the Technical Support Center per ACD 12.8.
3. Providing engineering and technical support to the control room as necessary.

KEWAUNEE NUCLEAR POWER PLANT
 ADMINISTRATIVE CONTROL DIRECTIVE

NO.	ACD 12.1	
TITLE	Kewaunee Emergency Organizational Structure	
DATE	MAR 31 1981	PAGE 7 OF 11

4.2.5 THE SECURITY FORCE is responsible for:

1. Maintaining access control for the plant protected area during an emergency.
2. Notifying fishermen and other site visitors outside of the protected area when instructed by the Emergency Director.
3. Performing personnel accountability for individuals leaving the protected area during an evacuation.
4. Directing off-site response personnel to the appropriate response facility.
5. Maintaining access control at the Emergency Operations Facility.

4.2.6 STAND-BY SUPPORT PERSONNEL are responsible for:

1. When on-site, reporting to the designated assembly areas upon notification of an emergency (See Figure 12.1-2 and Attachment).
2. When off-site, reporting to the plant access control point (Security Building or Site Access Facility) when contacted by plant management to provide additional support.

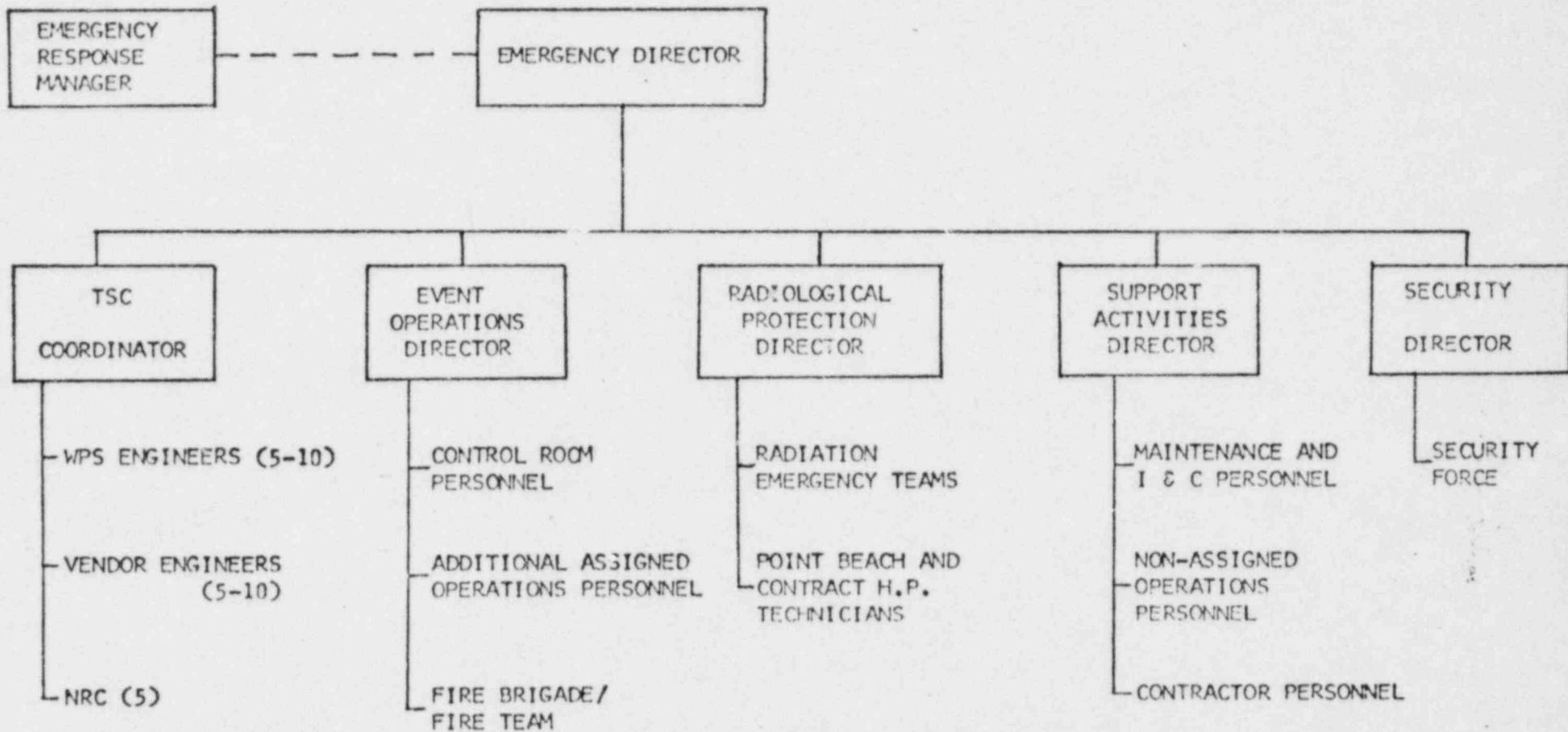


FIGURE 12.1-1 FUNCTIONAL EMERGENCY ORGANIZATION

Kewaunee Nuclear Power Plant
 ADMINISTRATIVE CONTROL DIRECTIVE

NO. ACD 12.1

 TITLE
 Kewaunee Emergency
 Organizational Structure

DATE MAR 31 1981

PAGE 9 OF 11

ATTACHMENT TO FIGURE 12.1-1
 EMERGENCY ORGANIZATION DESIGNEES AND ALTERNATES

Emergency organization positions and the personnel designated to fill the positions are listed below in the order of priority. The first position listed is the first to be filled and the first person listed is the individual designated to fill that position, with alternates listed after.

<u>POSITION</u>	<u>INDIVIDUAL</u>
Emergency Director	D. Hintz R. Lange C. Steinhardt W. Truttmann J. Richmond
Event Operations Director	C. Steinhardt W. Truttmann J. Wallace A. Ruege F. Stanaszak
Technical Support Center Coordinator	M. Marchi K. Evers C. Schrock G. Ruter J. Wallace
Radiological Protection Director	J. Richmond M. Reinhart W. Winnowski C. Long R. Pulec
Support Activities Director	R. Lange R. Hirst D. MacSwain L. Arno J. Tills
Emergency Response Manager	C. Luoma C. Giesler K. Weinbauer

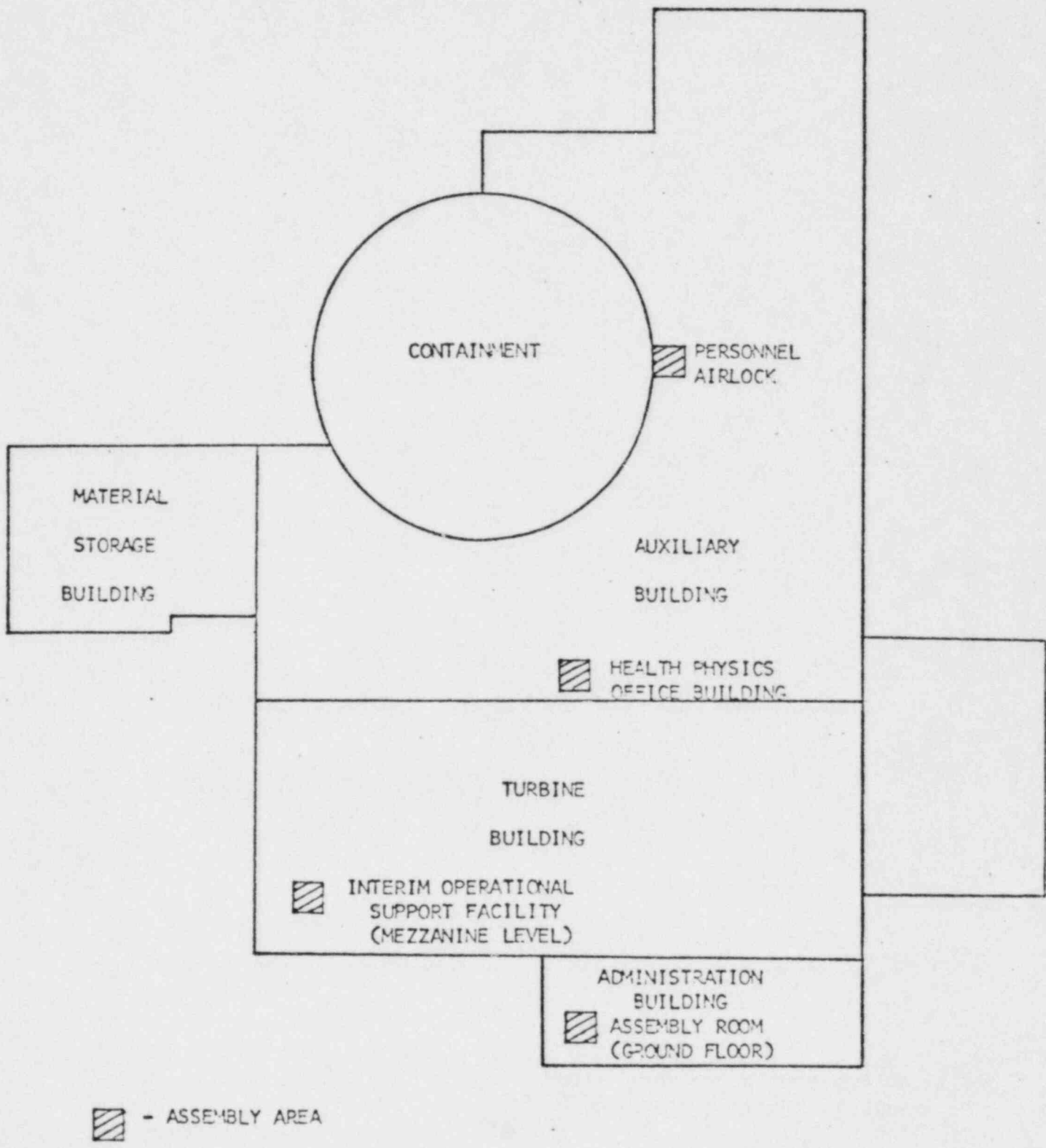


FIGURE 12.1-2 EMERGENCY ASSEMBLY AREAS

ATTACHMENT 12.1-2

EMERGENCY ASSEMBLY AREAS

GROUP	PRIMARY	ALTERNATE	COORDINATOR
Brigade } Team } if notified of fire	Maintenance Locker Room	Administration Building Lobby	Fire Brigade Leader*
	Admin. Building Lobby	Security Building	Fire Team Leader*
tion Emergency eam	Radiation Protection Office	Radiological Analysis Facility	Radiological Protection Director
enance, I & C ersonnel	Turb. Bldg. Construction Office (Mezzanine Level)	Assembly Room	Support Activities Director
-by Support Personnel			
Clean Area	Assembly Room	-----	Senior Staff Member Present
Controlled Area	Radiation Protection Office	Radiological Analysis Facility	Radiological Protection Director
Containment	Personnel Airlock	Emergency Airlock	Radiation Emergency Team Member
ical Support Center Staff	Assembly Room	-----	Technical Support Center Coordinator

ed in ACD 14.1

KEWAUNEE NUCLEAR POWER PLANT

ADMINISTRATIVE CONTROL DIRECTIVE

NO. ACD 12.2

TITLE Emergency Class Determination

DATE MAR 31 1981 PAGE 1 OF 19

REVIEWED BY

A. J. Rvege

APPROVED BY

*D.H. J.*1.0 PURPOSE

The purpose of this Administrative Control Directive is to provide guidance for determining the emergency classification of abnormal plant conditions.

2.0 APPLICABILITY

This Administrative Directive applies to those personnel specified under responsibilities for determination of emergency classification.

3.0 DEFINITIONS

- 3.1 Unusual Event - Events in process or have occurred which indicate a potential degradation of the level of safety of the plant. No releases of radioactive material requiring off-site response or monitoring are expected.
- 3.2 Alert - Events are in process or have occurred which involve an actual or potential substantial degradation of the level of safety of the plant. Any releases expected to be limited to small fractions of the EPA Protective Action Guideline (PAG) exposure levels.
- 3.3 Site Emergency - Events are in process or have occurred which involve actual or likely major plant functions needed for protection of the public. Any release not expected to exceed EPA PAG exposure levels except near site boundary.
- 3.4 General Emergency - Events are in process or have occurred which involve actual or imminent substantial core degradation or melting with potential for loss of containment integrity. Releases can be reasonably expected to exceed EPA PAG exposure levels off-site for more than the immediate site.

4.0 RESPONSIBILITIES

- 4.1 The Shift Supervisor (with the assistance of the Shift Technical Advisor) is responsible for the initial event classification.
- 4.2 The Emergency Director is responsible for changing the emergency class if conditions so warrant.
- 4.3 Emergency response personnel are responsible for performance of their required actions as detailed in other Emergency Administrative Control Directives.

5.0 REQUIREMENTS

5.1 Shift Supervisor and Shift Technical Advisor

5.1.1 During abnormal plant conditions, refer to Emergency Classification Table 12.2-1 and the applicable chart to determine if a plant emergency exists.

5.1.2 If a plant emergency exists, perform the required actions of the respective emergency Administrative Control Directive:

ACD 12.3 UNUSUAL EVENT

ACD 12.4 ALERT

ACD 12.5 SITE EMERGENCY

ACD 12.6 GENERAL EMERGENCY

5.1.3 Continue to refer to the Emergency Classification Tables as plant conditions change.

5.2 Emergency Director

5.2.1 Refer to the Emergency Classification Tables as notified of changes in plant conditions that may warrant changing the Emergency Classification.

TABLE 12.2-1
 EMERGENCY CLASSIFICATIONS

The following charts are separated into different abnormal operating conditions which may, depending upon their severity, be classified as an Unusual Event, Alert, Site Emergency, or General Emergency.

	<u>CHART</u>	<u>PAGE</u>
Abnormal Radiological Effluent	A	4
Fuel Damage Indication	B	6
Primary Leak	C	7
Primary/Secondary Leak	D	8
Loss of Power	E	9
Engineered Safety Feature Anomaly	F	10
Fire and Fire Protection	G	11
Loss of Indication	H	12
Security Contingency	I	13
Primary System Anomaly	J	14
Secondary Side Anomaly	K	15
Miscellaneous Abnormal Plant Conditions	L	16
Personnel Injury	M	17
Earthquake	N	17
Flood, Low Water or Seiche	O	18
Tornado or High Winds	P	18
External Events	Q	19
Auxiliary Building Stack High Range Monitor Reading versus Release Duration assuming most adverse meteorology for Emergency Class determination	Fig. 12.2-1	5

TABLE 12.2-1
CHART A
ABNORMAL RADIOLOGICAL EFFLUENT

EMERGENCY CLASSIFICATION CRITERIA	CLASSIFICATION	KEWAUNEE PLANT INDICATION
Biological Effluent Technical Specification limits exceeded.	UNUSUAL EVENT	R13 > 200,000 CPM, R14 > 400,000 CPM, or RE29035 > 0.6 mr/hr. Refer to T.S. Section 3.9 - Radioactive Materials.
Contamination levels or airborne contamination which indicate a severe degradation in the quality of radioactive materials.	ALERT	Increase by a factor of 1000 on any process monitor (R-15, R-16, R-17, R-19, R-22, R-23) excluding effluent monitors.
Biological effluents greater than 10 times the Technical Specification instantaneous limits.	ALERT	R13 and R14 off scale. Refer to Figure 12.2-1 which relates RE 29078 (Auxiliary Building Stack High Range Monitor) reading and release duration. Obtain average monitor reading and actual or projected release time; intersection is the Emergency classification. Also refer to T.S. Section 3.9 - Radioactive Materials.
Effluent monitors detect levels corresponding to greater than 50 mr/hr for 1/2 hour or greater than 500 mr/hr W.B. for two minutes at the site boundary for <u>actual meteorology</u> .	SITE EMERGENCY	Refer to Figure 12.2-1 which relates RE 29078 (Auxiliary Building Stack High Range Monitor) reading and release duration. Obtain average monitor reading and actual or projected release time; intersection is the Emergency classification.
Projected or measured in the environs dose rates greater than 50 mr/hr for 1/2 hour or greater than 500 mr/hr W.B. for two minutes at the site boundary.	SITE EMERGENCY	Projected or measured dose rates to be provided by on-shift radiation protection man, Radiological Protection Director, or off-site survey teams.
Effluent monitors detect levels corresponding to greater than 1 rem/hr W.B. or 5 rem/hr thyroid at the site boundary for <u>actual meteorological</u> conditions.	GENERAL EMERGENCY	For <u>initial</u> assessment, refer to Figure 12.2-1 which relates RE 29078 (Auxiliary Building Stack High Range Monitor) reading and release duration. Obtain average monitor reading and actual or projected release time; intersection is the Emergency classification. Projected dose rates for <u>actual</u> meteorological conditions to be provided by on-shift radiation protection man or Radiological Protection Director.
Projected or measured in the environs dose rates greater than 1 rem/hr W.B. or 5 rem/hr thyroid at the site boundary.	GENERAL EMERGENCY	Projected or measured dose rates to be provided by on-shift radiation Protection man, Radiological Protection Director, or off-site survey teams.

MAR 31 1961 PAGE 4 OF 13

FIGURE 12.2-1

AUX BLDG STACK HI RANGE MONITOR

1 ZONE SV FAN

UNUSUAL EVENT > 1.2 MR/HR
ALERT > 12 MR/HR

GENERAL
EMERGENCY

SITE EMERGENCY

ALERT

2 ZONE SV FANS

UNUSUAL EVENT > 0.6 MR/HR
ALERT > 6 MR/HR

GENERAL
EMERGENCY

SITE EMERGENCY

ALERT

RELEASE DURATION (MIN)

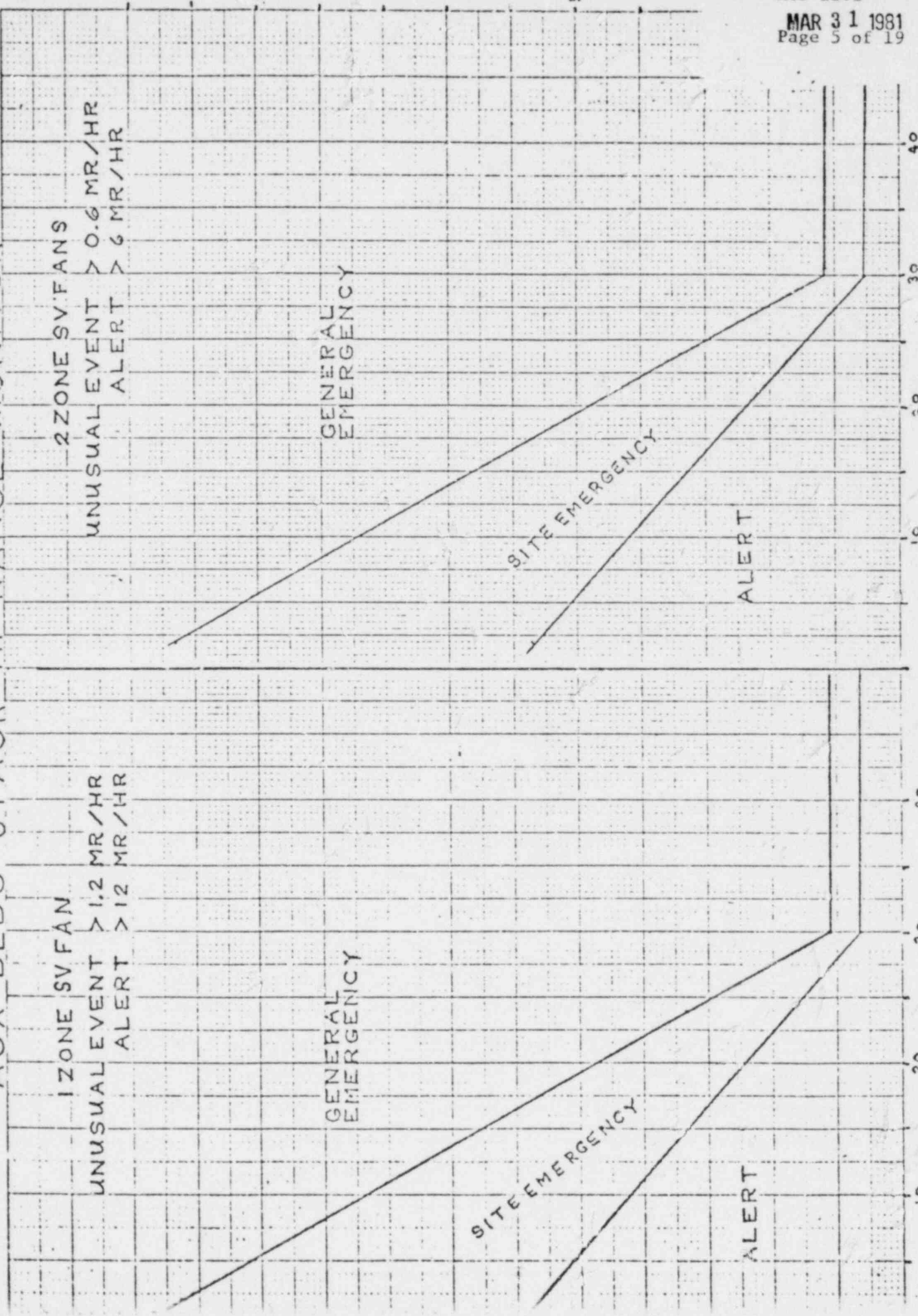


TABLE 12.2-1
 CHART B
 FUEL DAMAGE INDICATION

EMERGENCY CLASSIFICATION CRITERIA	CLASSIFICATION	KEWAUNEE PLANT INDICATION
High reactor coolant activity sample	UNUSUAL EVENT	Exceed Technical Specification 3.1.c Maximum Coolant Activity determined by reactor coolant sample analysis.
Red Fuel monitor indicates greater than 5% equivalent fuel failures within 30 minutes.	UNUSUAL EVENT	R-9 increase by a factor of 100.
Red Fuel monitor indicates greater than 5% fuel failures within 30 minutes or 5% total fuel failures.	ALERT	R-9 off scale. Confirm with a coolant sample analysis.
Very high coolant activity sample	ALERT	R-9 off scale. Laboratory analysis required to confirm greater than 300 u ci/ml of I-131 equivalent.
Level 1 damage accident with release of radioactivity to containment or auxiliary building.	ALERT	R-11 or R-12 (containment) } annunciator sounding at setpoint R-13 or R-14 (auxiliary building) } with R-9 increasing by a factor of 100.
Level 2 or damage to spent fuel in containment or auxiliary building.	SITE EMERGENCY	R-11 or R-12 (containment) } annunciator sounding at setpoint and R-13 or R-14 (auxiliary building) } physical evidence of fuel damage.
Loss of 2 of 3 fission product barriers with a potential loss of 3rd barrier.	GENERAL EMERGENCY	Confirmation of 2 fission product barriers breached and loss of some Engineered Safety Features. (e.g. Fuel failure indicated with reactor coolant piping failure and the potential for loss of containment. Steam generator tube rupture with associated main steam isolation valve failure and loss of high head safety injection.)

CHART C
PRIMARY LEAK

EMERGENCY CLASSIFICATION CRITERIA	CLASSIFICATION	KEWAUNEE PLANT INDICATION
Exceeding Reactor Coolant System leak rate Technical Specifications requiring reactor shutdown.	UNUSUAL EVENT	Any reactor shutdown required by T.S. Section 3.1.d.
Reactor Coolant System leak rate greater than 50 GPM.	ALERT	Indicated leakage of ≥ 50 GPM.
Reactor Coolant System leakage greater than charging pump capacity.	SITE EMERGENCY	The charging pumps cannot maintain pressure level and the safety injection pumps are required to maintain pressurizer pressure or level.
Loss of coolant accident with complete failure of ECCS to perform leading to core degradation.	GENERAL EMERGENCY	Failure of both trains of safety injection or residual heat removal to perform when required based on RCS pressure.
Loss of coolant accident with initially successful ECCS, but subsequent failure containment heat removal systems.	GENERAL EMERGENCY	Initially successful operation of emergency core cooling system with subsequent failure of all fan-coil units, both containment spray pumps, and both trains of residual heat removal.

TABLE 12.2-1
 CHART D
PRIMARY TO SECONDARY LEAK

EMERGENCY CLASSIFICATION CRITERIA	CLASSIFICATION	KEWAUNEE PLANT INDICATION
<p>Exceeding Primary to Secondary leak rate Technical Specification placing the plant under a limiting condition for operation.</p>	<p>UNUSUAL EVENT</p>	<p>R-15 and R-19 indicate primary to secondary leak. Any reactor shutdown required by T.S. 3.1.d.2.</p>
<p>Rapid gross failure of one steam generator tube with loss of off-site power.</p>	<p>ALERT</p>	<p>R-15 and R-19 indicate primary to secondary leak. High head safety injection required to maintain pressurizer pressure or level, and all four trans- mission lines to the plant are de-energized.</p>
<p>Rapid failure of steam generator tubes.</p>	<p>ALERT</p>	<p>R-15 and R-19 indicate primary to secondary leak. Primary to Secondary leak rate ≥ 800 GPM as indicated by safety injection pump flow.</p>
<p>Rapid failure of steam generator tubes with loss of off-site power.</p>	<p>SITE EMERGENCY</p>	<p>Primary to Secondary leak rate ≥ 800 GPM as indicated by safety injection pump flow and all four trans- mission lines to the plant de-energized.</p>

TABLE 12.2-1
 CHART E
LOSS OF POWER

EMERGENCY CLASSIFICATION CRITERIA	CLASSIFICATION	KEWAUNEE PLANT INDICATION
Loss of off-site power or loss of on-site power capability.	UNUSUAL EVENT	All four transmission lines to the plant de-energized or both emergency diesel generators inoperable.
Loss of off-site power AND loss of all on-site AC power	SITE EMERGENCY	All four transmission lines to the plant de-energized <u>and</u> loss of power to main 4160 volt buses 1 through 6 and loss of all vital AC power supplied via the inverters.
Loss of all on-site DC power.	SITE EMERGENCY	All DC distribution cabinets either in a low voltage lockout or de-energized conditions.
Loss of off-site and on-site power with total loss of emergency power make-up capability for 1 hour would lead to core melt likely failure of containment.	GENERAL EMERGENCY	Total loss of off-site and on-site power <u>and</u> loss of the turbine driven auxiliary feedwater pump.

TABLE 12.2-1
 CHART F
ENGINEERED SAFETY FEATURE ANOMALY

EMERGENCY CLASSIFICATION CRITERIA	CLASSIFICATION	KEWAUNEE PLANT INDICATION
Emergency core cooling initiated and discharged to the reactor vessel.	UNUSUAL EVENT	Initiation of the safety injection sequence by a plant condition for which the ECCS mitigation function is warranted. Refer to Emergency Operating Procedure E-0-07 Safety Injection Activation.
Loss of engineered safety feature function requiring shutdown by Technical Specifications.	UNUSUAL EVENT	Any shutdown required by T. S. Limiting Conditions for Operation, Section 3.3, Engineered Safety Features and Auxiliary Systems.
Complete loss of any function required for cold shutdown.	ALERT	Loss of operability of both trains of RHR for core cooling if the steam generators are unable to be utilized.
Failure of the Reactor Protection System to initiate and complete a scram which brings the reactor subcritical.	ALERT	Failure of the reactor protection system to initiate and complete a reactor trip when required. (e.g. A turbine trip from full power without reactor trip. Indication would be increasing reactor coolant system pressure leading to lifting of pressurizer relief valves.)
Complete loss of any function needed for plant hot shutdown.	SITE EMERGENCY	Total loss of all auxiliary and main feedwater systems (e.g. loss of both feedwater pumps and all three auxiliary feedwater pumps) when the primary system temperature is above 350° F.

TABLE 12.2-1
CHART G
FIRE AND FIRE PROTECTION

EMERGENCY CLASSIFICATION CRITERIA	CLASSIFICATION	KEWAUNEE PLANT INDICATION
Loss of Fire Protection system function requiring shutdown by Technical Specifications.	UNUSUAL EVENT	Kewaunee has no Technical Specifications which require shutdown with loss of a Fire Protection System function.
A fire within the plant lasting more than 10 minutes.	UNUSUAL EVENT	A fire within the Administration Building, Turbine Building, Warehouse, Auxiliary Building, or Containment Building lasting more than 10 minutes.
A fire potentially affecting safety systems.	ALERT	A fire that renders engineered safety feature equipment inoperable to the extent that a degraded mode limiting condition for operation is entered. Refer to Technical Specification Section 3.3, Engineered Safety Features and Auxiliary Systems.
A fire compromising the functions of safety systems	SITE EMERGENCY	A fire that renders engineered safety feature equipment inoperable to the extent that minimum equipment necessary for continued operation is not available. Refer to Technical Specification Section 3.3, Engineered Safety Features and Auxiliary Systems.

TABLE 12.2-1
 CHART H
LOSS OF INDICATION

EMERGENCY CLASSIFICATION CRITERIA	CLASSIFICATION	KEWAUNEE PLANT INDICATION
<p>indications or alarms on process or fluent parameters not functional control room to an extent requiring plant shutdown or other significant loss of assessment capability.</p>	<p>UNUSUAL EVENT</p>	<p>Refer to Technical Specification Sections 3.3, Engineered Safety Features and Auxiliary Systems, 3.5, Instrumentation System, and 3.10, Control Rod and Power Distribution Limits to determine if plant shutdown is required.</p>
<p>Two or all alarms (annunciators) lost.</p>	<p>ALERT</p>	<p>Total loss of Annunciator System, Computer Alarms, and Sequence of Events Recorder.</p>
<p>Two or all alarms (annunciators) lost with a plant transient initiated or in progress.</p>	<p>SITE EMERGENCY</p>	<p>Total loss of Annunciator System, Computer Alarms, and Sequence of Events Recorder with a plant transient in progress or initiated during the loss.</p>

TABLE 12.2-1
 CHART I
SECURITY CONTINGENCY

EMERGENCY CLASSIFICATION CRITERIA	CLASSIFICATION	KEWAUNEE PLANT INDICATION
Security threat or attempted entry or attempted sabotage.	UNUSUAL EVENT ¹	Receipt of a security threat or bomb threat message, attempted entry by an adversary into the plant protected area, security area or a vital area, or a confirmed sabotage attempt.
Ongoing Security compromise	ALERT	An armed attack mounted against the Plant which has lasted more than 30 minutes.
Imminent loss of physical control of the plant.	SITE EMERGENCY	Armed intruders have successfully penetrated the protected area and are about to enter the security area.
Loss of physical control of the plant.	GENERAL EMERGENCY	Armed intruders are within the Plant security area and are attempting entry of a vital area.

TABLE 12.2-1
 CHART J
PRIMARY SYSTEM ANOMALY

EMERGENCY CLASSIFICATION CRITERIA	CLASSIFICATION	KEWAUNEE PLANT INDICATION
Normal coolant temperature and/or pressure outside of Technical Specification limits.	UNUSUAL EVENT	A temperature/pressure combination that exceeds the safety limits defined in the Technical Specifications, Section 2.1.
Reactor coolant pump seizure leading to fuel failure	ALERT	A primary system transient resulting in a loss of flow caused by reactor coolant pump seizure and leading to an over-pressure condition mitigated by substantial relief of coolant via the pressurizer relief and/or safety valves and subsequent filling of the pressurizer relief tank.

TABLE 12.2-1
 CHART K
SECONDARY SIDE ANOMALY

EMERGENCY CLASSIFICATION CRITERIA	CLASSIFICATION	KEWAUNEE PLANT INDICATION
The rotating component failure causing plant shutdown.	UNUSUAL EVENT	A failure of the turbine resulting in an immediate shutdown and/or overspeed condition and for which turbine repair requires major disassembly.
Depressurization of the secondary	UNUSUAL EVENT	The uncontrolled depressurization of the secondary system to the point where automatic safety injection is initiated (less than 500 psig steam generator pressure).
The failure causing casing penetration	ALERT	Self explanatory
Line break with significant (greater than 10 GPM) primary to secondary leakage.	ALERT	A break in the main steam system that results in ECCS actuation and that is not isolated (i.e., either upstream of main steam isolation valve or main steam isolation valve fails to operate), and R-15 and/or R-19 indicating primary to secondary leakage.
Line break with greater than 10 GPM primary to secondary leakage and indication of fuel damage.	SITE EMERGENCY	A break in the main steam system that results in ECCS actuation and increase in monitor R-9 by a factor of greater than 100. High head safety injection would be required to maintain pressurizer level and pressure.
Event initiated by loss of feedwater and condensate systems followed by failure of auxiliary feedwater system for an extended period. Core melting possible in 1 to 2 hours. Ultimate failure and meltdown likely if core melts.	GENERAL EMERGENCY	Loss of all secondary side cooling and loss of high head safety injection. (Extended period shall be considered to be greater than 1 hour.)

TABLE 12.2-1
 CHART L
MISCELLANEOUS ABNORMAL PLANT CONDITIONS

EMERGENCY CLASSIFICATION CRITERIA	CLASSIFICATION	KEWAUNEE PLANT INDICATION
Loss of containment integrity requiring shutdown by Technical Specifications.	UNUSUAL EVENT	Refer to T.S. Section 3.6 to determine if shutdown is required.
Other plant conditions that warrant increased awareness on the part of plant staff or state and/or local authorities requires plant shutdown under Technical Specifications.	UNUSUAL EVENT	Conditions at the discretion of the Plant Manager or his designated alternate. Examples include cooldown rate exceeding T.S. limits or pipe crack-found during operation.
Evacuation of control room anticipated or initiated with control of shutdown systems established from local stations.	ALERT	Evacuations of control room (E-0-06) with control at shutdown panel.
Evacuation of control room and control shutdown systems not established at local stations.	SITE EMERGENCY	Evacuation of control room (E-0-06) and failure to establish control at shutdown panel.

TABLE 12.2-1
 CHART M
 PERSONNEL INJURY

EMERGENCY CLASSIFICATION CRITERIA	CLASSIFICATION	KEWAUNEE PLANT INDICATION
Evacuation of contaminated, seriously injured individual from site to an off-site location.	UNUSUAL EVENT	Self Explanatory

TABLE 12.2-1
 CHART N
 EARTHQUAKE

EMERGENCY CLASSIFICATION CRITERIA	CLASSIFICATION	KEWAUNEE PLANT INDICATION
Earthquake felt in plant or detected by station seismic instrumentation.	UNUSUAL EVENT	More than one accelerometer is activated.
Earthquake greater than OBE Operational Earthquake.	ALERT	An earthquake with horizontal ground acceleration of 0.06g or greater (Fluor Power Services to provide instrument reading which corresponds).
Earthquake greater than SSE Safe Shutdown Earthquake.	SITE EMERGENCY	An earthquake with such consequences as to place the plant in a site emergency per a different Emergency Classification Criteria.

TABLE 12.2-1
 CHART O
FLOOD, LOW WATER, OR SEICHE

EMERGENCY CLASSIFICATION CRITERIA	CLASSIFICATION	KEWAUNEE PLANT INDICATION
or flood, low water or seiche	UNUSUAL EVENT	High water level above 580 feet. Low forebay water level condition that cannot be cleared by stopping the circulating water system. Wave greater than 18 feet.
low water, or seiche near design	ALERT	Design High Water Level = 582 feet Design Low Water Level = 575 feet Design Deep Water WAVE = 22.5 feet

TABLE 12.2-1
 CHART P
TORNADO OR HIGH WINDS

EMERGENCY CLASSIFICATION CRITERIA	CLASSIFICATION	KEWAUNEE PLANT INDICATION
tornado on site	UNUSUAL EVFNT	A tornado withinsight of the plant which has caused the loss of at least one of the off-site transmission lines.
tornado striking facility	ALERT	A tornado which strikes the facility and due to damage affects continued safe plant operation.
ined winds in excess of design levels plant not in cold shutdown.	SITE EMERGENCY	Winds in excess of 100 MPH for greater than 1 hour.

TABLE 12.2-1
 CHART Q
 EXTERNAL EVENTS

EMERGENCY CLASSIFICATION CRITERIA	CLASSIFICATION	KEWAUNEE PLANT INDICATION
crash on-site or unusual aircraft over facility.	UNUSUAL EVENT	An aircraft crash within the plant low population zone or notification from the security force or other source of higher than normal aircraft activity over the site.
crash on facility	ALERT	An aircraft crash into plant buildings or switchyard which affects plant operation
impact from whatever source on	ALERT	A missile strikes the facility which affects plant operation.
to facility environs of uncontrolled toxic or flammable gases.	ALERT	Release of toxic or flammable gas from a ruptured container such that the gases enter the plant protected area or buildings.
explosion damage to facility or plant operation.	ALERT	Self Explanatory.
crash affecting vital structures or fire.	SITE EMERGENCY	An aircraft crash into plant buildings which causes the loss of any Engineered Safety Feature function to levels below the minimum required for plant operation. Refer to Technical Specifications Section 3.3.
Damage to safe shutdown equipment, missiles or explosion.	SITE EMERGENCY	A missile strikes plant buildings or explosion occurs within a plant building which causes the loss of any Engineered Safety Feature function to levels below the minimum required for plant operation. Refer to Technical Specifications Section 3.3.
Uncontrolled flammable gases into areas, or entry of uncontrolled gases into vital areas where lack of gas to the area constitutes a problem.	SITE EMERGENCY	Release of flammable or toxic gas from a ruptured container which enters vital areas as described at left.

KEWAUNEE NUCLEAR POWER PLANT

ADMINISTRATIVE CONTROL DIRECTIVE

NO. ACD 12.3

TITLE Unusual Event

DATE MAR 31 1981 PAGE 1 OF 6

REVIEWED BY

af Rues

APPROVED BY

DH

1.0 PURPOSE

This procedure describes the actions in response to a condition at the Plant which has been classified as an UNUSUAL EVENT per ACD 12.2. Notification of an unusual event is made to:

1. Assure that internal notifications have been completed,
2. Bring the operating staff to a state of readiness, and
3. Provide systematic handling of information and decision making.

2.0 APPLICABILITY

This procedure applies to all plant staff, contractor, and corporate personnel and to those off-site agencies that may be notified during an UNUSUAL EVENT.

3.0 DEFINITIONS

Unusual Event - Events in process or have occurred which indicate a potential degradation of the level of safety of the plant. No releases of radioactive material requiring off-site response or monitoring are expected.

4.0 RESPONSIBILITIES

- 4.1 The Shift Supervisor is responsible for initial classification of the event per ACD 12.2.
- 4.2 The Shift Supervisor is responsible for ensuring that required immediate notifications have been made and confirmed.

5.0 REQUIREMENTS

5.1 Immediate Response:

5.1.1 Shift Supervisor

1. If fire emergency, actions required by ACD 14.2 should be immediately implemented.
2. Contact the Shift Technical Advisor (STA).

3. Determine if immediate personnel assembly is required. For personnel assembly, the Shift Supervisor will direct a member of the operating crew to make the following announcement over the Plant Gai-Tronics:

"Attention all personnel. We are experiencing an UNUSUAL EVENT. All personnel are requested to report to their assembly areas.:

NOTE: Also announce the location of any hazards (fire, abnormally high radiation area) so they can be avoided during personnel assembly.

Sound the plant emergency alarm and repeat the announcement.

NOTE: Emergency assembly areas are described in ACD 12.9, Personnel Accountability.

4. Determine if Emergency Center activation is required.
 5. Direct the STA to notify members of the emergency organization and off-site response agencies.
- 5.1.2 Shift Technical Advisor (STA)
1. Report to the Control Room to be briefed and assess plant conditions.
 2. When directed by the Shift Supervisor, notify key members of the emergency organization and specified off-site support agencies in accordance with the Attachment and Figure 12.3-1. The emergency communication system is described in ACD 12.7.

5.1.3 Key Emergency Response Personnel

ON-SITE NOTIFICATION

OFF-SITE NOTIFICATION

EMERGENCY DIRECTOR (ED)

- | | |
|--|--|
| <ol style="list-style-type: none"> 1. Report to the Control Room to be briefed and decide if personnel assembly and/or emergency facility activation is necessary. 2. Notify Emergency Response Manager (ERM) of the UNUSUAL EVENT | <ol style="list-style-type: none"> 1. Evaluate the event and determine the need to report to the plant and if personnel assembly and/or emergency facility activation is necessary. 2. Notify Emergency Response Manager (ERM) of the UNUSUAL EVENT. |
|--|--|

EVENT OPERATIONS DIRECTOR (EOD)

- | | |
|--|---|
| <ol style="list-style-type: none"> 1. Report to the Control Room to be briefed. | <ol style="list-style-type: none"> 1. Evaluate the event and determine the need to report to the plant or report at the request of the Emergency Director. |
|--|---|

RADIOLOGICAL PROTECTION DIRECTOR (RPD)

- | | |
|--|---|
| <ol style="list-style-type: none"> 1. Report to the Radiation Protection Office. 2. Activate Radiation Emergency Team, if necessary. | <ol style="list-style-type: none"> 1. Evaluate the need to report to the site or report at the request of the Emergency Director. 2. Activate Radiation Emergency Team, if necessary. |
|--|---|

TECHNICAL SUPPORT CENTER COORDINATOR (TSCC)

- | | |
|--|---|
| <ol style="list-style-type: none"> 1. Maintain contact with ED on Plant status. 2. Prepare to activate Technical Support Center. | <ol style="list-style-type: none"> 1. Evaluate the need to report to the Plant or report at the request of the Emergency Director. 2. Prepare to activate Technical Support Center. |
|--|---|

SUPPORT ACTIVITIES DIRECTOR (SAD)

- | | |
|--|---|
| <ol style="list-style-type: none"> 1. Maintain contact with ED on Plant status. 2. Prepare to activate Operational Support Facility. | <ol style="list-style-type: none"> 1. Evaluate the need to report to the Plant or report at the request of the ED. 2. Prepare to activate Operational Support Facility. |
|--|---|

KEWAUNEE NUCLEAR POWER PLANT
ADMINISTRATIVE CONTROL DIRECTIVE

NO. ACD 12.3

TITLE Unusual Event

DATE MAR 31 1981

PAGE 4 OF 6

5.2 Subsequent Actions

5.2.1 Shift Supervisor

1. If generating capabilities may be affected by the event, notify WPS Load Dispatcher.
2. Continue to make assessments of plant conditions to determine if a change in the emergency class is warranted.
3. Continue to direct plant operations per Emergency Operating Procedures.

5.2.2 Shift Technical Advisor

1. Continue to monitor plant conditions to ensure adequate core cooling.
2. Respond to inquiries for additional technical information from state and local response agencies if it does not interfere with accident assessment activities.

5.2.3 Emergency Director

1. Continue to keep ERM informed of plant conditions.
2. Maintain communication ties with activated emergency centers.
3. Escalate to a more severe class if appropriate

OR

Close out with verbal summary to off-site authorities followed by written summary in 24 hours.

5.2.4 Security Director or Security Force

1. If personnel assembly is required initiate a personnel accountability check per ACD 12.9.

ATTACHMENT TO FIGURE 12.3-1
UNUSUAL EVENT NOTIFICATION

- A.1 The Shift Supervisor or Shift Technical Advisor should contact the following:
1. One member of each key emergency position on Figure 12.3-1 until a representative for each position has been notified and confirmed. The first member in each position can be contacted simultaneously by using pager code #10. Each key person notified by pager should confirm contact by a return telephone call at
 2. The NRC using the Emergency Notification System (ENS) red phone.
 3. Emergency Teams (Fire Radiation) using pager system dependent upon type of event and at discretion of Shift Supervisor.
 4. The state and local government using the NAWAS line giving the following statement:

"Kewaunee Nuclear calling Warning Center 1, East Central Area, Kewaunee County, and Manitowoc County.

This is (name) (title) at the Kewaunee Nuclear Plant.

An incident has occurred at our facility and we are declaring an UNUSUAL EVENT at (time) on (date).

The following conditions exist. (One or two sentence description of the event.) _____

There appear to be no off-site consequences. This message is for notification only: no off-site response is requested at this time.

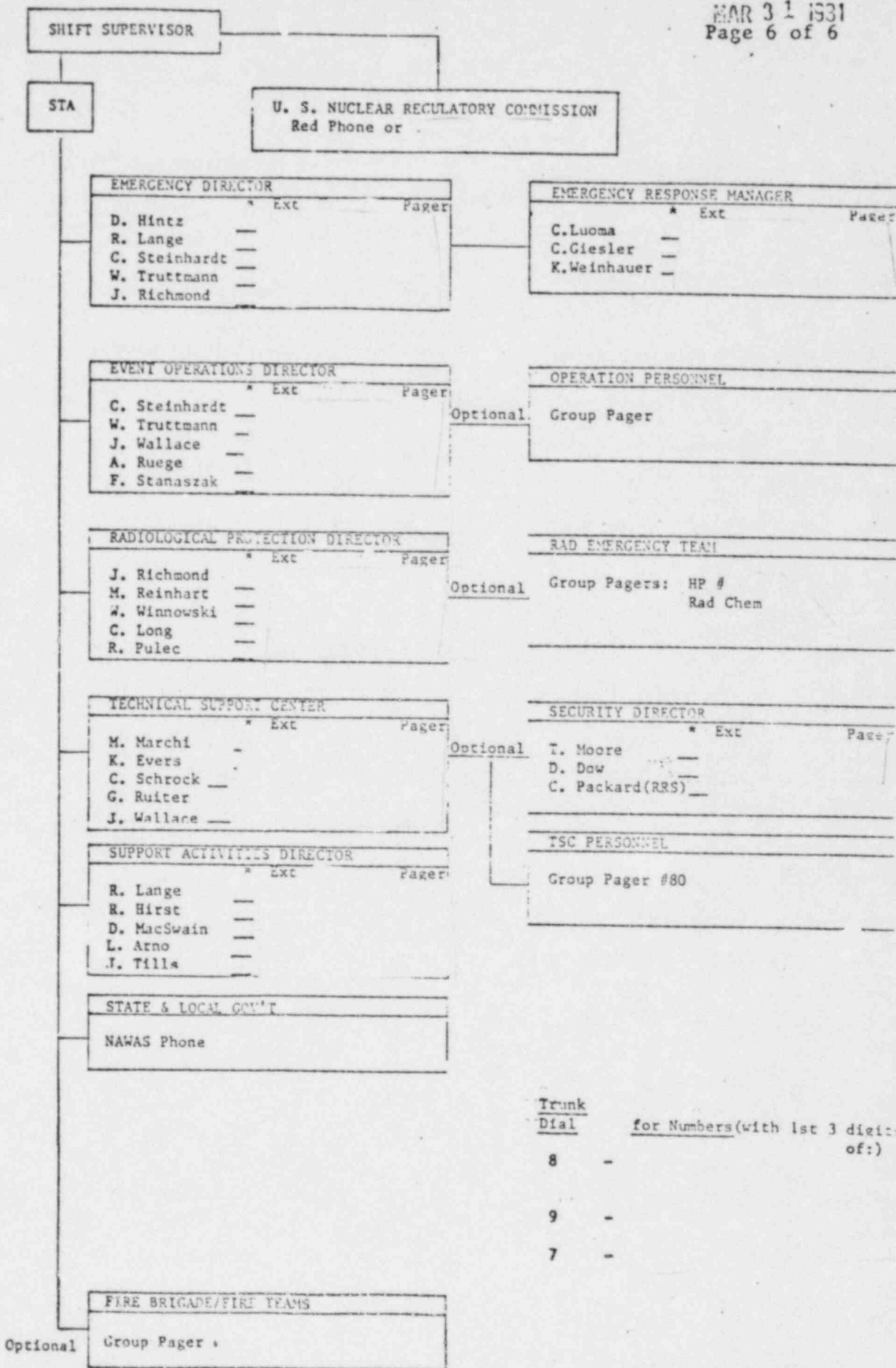
We will keep you informed of the situation.

Any confirming calls or return contacts should be through commercial telephone: Area Code

Acknowledge message."

UNUSUAL EVENT NOTIFICATION

ACD 12.3
 MAR 31 1981
 Page 6 of 6



Trunk Dial	for Numbers (with 1st 3 digits of:)
8	-
9	-
7	-

* - Confirmation of contact made

WISCONSIN PUBLIC SERVICE CORPORATION

KEWAUNEE NUCLEAR POWER PLANT

ADMINISTRATIVE CONTROL DIRECTIVE

NO. ACD 12.4

TITLE Alert

DATE MAR 31 1981 PAGE 1 OF 7

REVIEWED BY

A. J. Ruyf

APPROVED BY

D. H. C.

1.0 PURPOSE

This procedure describes the actions in response to a condition at the Plant which has been classified as an ALERT per ACD 12.2. The Alert is to:

1. Assure that emergency personnel are readily available to respond if a situation becomes more serious or to perform confirmatory radiation monitoring if required, and
2. Provide off-site authorities current status information.

2.0 APPLICABILITY

This procedure applies to all plant staff, contractor, and corporate personnel and to those off-site agencies that may be notified during an ALERT.

3.0 DEFINITIONS

ALERT - Events are in process or have occurred which involve an actual or potential substantial degradation of the level of safety of the plant. Any releases are expected to be limited to small fractions of the EPA Protective Action Guideline (PAG) exposure levels.

4.0 RESPONSIBILITIES

- 4.1 The Shift Supervisor is responsible for the initial event classification per ACD 12.2.
- 4.2 The Shift Supervisor is responsible for ensuring that required immediate notifications have been made and confirmed.

5.0 REQUIREMENTS

5.1 Immediate Notification Actions:

5.1.1 Shift Supervisor

1. If fire emergency, actions required by ACD 14.2 should be immediately implemented.
2. Contact the Shift Technical Advisor (STA).

WISCONSIN PUBLIC SERVICE CORPORATION

KEWAUNEE NUCLEAR POWER PLANT

ADMINISTRATIVE CONTROL DIRECTIVE

NO. ACD 12.4

TITLE Alert

DATE MAR 31 1981

PAGE 2 OF 7

3. Determine if immediate personnel assembly is required. For personnel assembly the Shift Supervisor will direct a member of the operating crew to make the following announcement over the Plant Gai-Tronics:

"Attention all personnel. We are experiencing an ALERT. All personnel are requested to report to their assembly areas."

NOTE: Also announce the location of any hazards (fire, abnormally high radiation area) so they can be avoided during personnel assembly.

Sound the plant emergency alarm and repeat the announcement.

NOTE: Emergency assembly areas are described in ACD 12.9, Personnel Accountability.

4. Direct the STA to notify members of the emergency response organization and off-site response agencies.

5.1.2 Shift Technical Advisor (STA)

1. Report to the Control Room to be briefed and assess plant conditions.
2. When directed by the Shift Supervisor, notify key members of the emergency organization and specified off-site support agencies in accordance with Attachment and Figure 12.4-1. The emergency communication system, is described in ACD 12.7.

5.1.3 Key Emergency Response Personnel

ON-SITE NOTIFICATION	OFF-SITE NOTIFICATION
----------------------	-----------------------

EMERGENCY DIRECTOR (ED)

1. Report to the Control Room to be briefed.
2. Notify Emergency Response Manager (ERM) of the ALERT.

1. Report to the plant.
2. Notify Emergency Response Manager (ERM) of the ALERT.

EVENT OPERATIONS DIRECTOR (EOD)

1. Report to the Control Room to be briefed.

1. Report to the plant

RADIOLOGICAL PROTECTION DIRECTOR (RPD)

1. Report to the RPO
2. Activate Radiation Emergency Team, if necessary.

1. Report to the plant
2. Activate Radiation Emergency Team, if necessary.

TECHNICAL SUPPORT CENTER COORDINATOR (TSCC)

1. Maintain contact with ED on Plant status.
2. Activate Technical Support Center

1. Report to the plant
2. Activate Technical Support Center.

SUPPORT ACTIVITIES DIRECTOR (SAD)

1. Maintain contact with ED on Plant status.
2. Activate Operational Support Facility.

1. Report to the plant.
2. Activate Operational Support Facility.

5.2 Subsequent Actions

5.2.1 Shift Supervisor

1. If generating capabilities may be affected by the event, notify WPS Load Dispatcher.
2. Continue to make assessments of plant conditions to determine if a change in the emergency class is warranted.
3. Continue to direct plant operations per Emergency Operating Procedures.

5.2.2 Shift Technical Advisor

1. Continue to monitor plant conditions to ensure adequate core cooling.
2. Respond to inquiries for additional technical information from state and local response agencies if it does not interfere with accident assessment activities.

5.2.3 Emergency Director

1. Continue to keep ERM informed of Plant conditions.
2. Maintain communication with Operations Event Director, Technical Support Center Coordinator, Support Activities Director and Radiological Protection Director.
3. Escalate to a more severe emergency class if appropriate,

OR

Close out or recommend reduction in emergency class by verbal summary to off-site authorities followed by written summary within 24 hours.

5.2.4 Event Operations Director

1. Coordinate operational and Control Room activities through the Shift Supervisor.

5.2.5 Radiation Protection Director

1. Evaluate radiological conditions in plant.
2. Provide periodic meteorological assessment to off-site authorities, and if any releases are occurring, dose estimates for actual releases.

5.2.6 Technical Support Center Coordinator

1. Provide periodic plant status updates to off-site authorities.

5.2.7 Support Activities Director

1. Direct any corrective maintenance activities required to mitigate the consequences of the emergency.

5.2.8 Security Director or Security Force

1. Dispatch an officer to the fishing area and inform people they should leave the site using the following statement WITH NO OTHER INFORMATION GIVEN:

"The plant site has been temporarily closed and you are requested to leave. Please do so at this time."

2. Dispatch an officer to the site entrance at Highway 42 and only admit persons with Kewaunee Nuclear Plant Personnel cards or by authorization of the Emergency Director.
3. Initiate a personnel accountability check per ACD 12.9.

KEWAUNEE NUCLEAR POWER PLANT

ADMINISTRATIVE CONTROL DIRECTIVE

NO. ACD 12.4

TITLE Alert

DATE MAR 31 1981

PAGE 6 OF 7

ATTACHMENT TO FIGURE 12.4-1
ALERT NOTIFICATION

A.1 The Shift Supervisor or Shift Technical Advisor should contact the following:

1. One member of each key emergency position on Figure 12.4-1 until a representative for each position has been notified and confirmed. The first member in each position can be contacted simultaneously by using pager code #10. Each key person notified by pager should confirm contact by a return telephone call at
2. The NRC using the Emergency Notification System (ENS) red phone.
3. Emergency Teams (Fire, Radiation) using pager system dependent upon type of event and at discretion of Shift Supervisor.
4. The state and local government using the NAWAS line giving the following statement:

"Kewaunee Nuclear calling Warning Center 1, East Central Area, Kewaunee County, and Manitowoc County.

This is (name) (title) at the Kewaunee Nuclear Plant.

An incident has occurred at our facility and we are declaring an ALERT at (time) on (date).

The following conditions exist. (One or two sentence description of the event.) _____

There has been (a minor/no) release of radioactive material to the environment.

No outside support is requested. No evacuation of residents is expected.

We will keep you informed of the situation.

Any confirming calls or return contacts should be through commercial telephone: Area Code _____

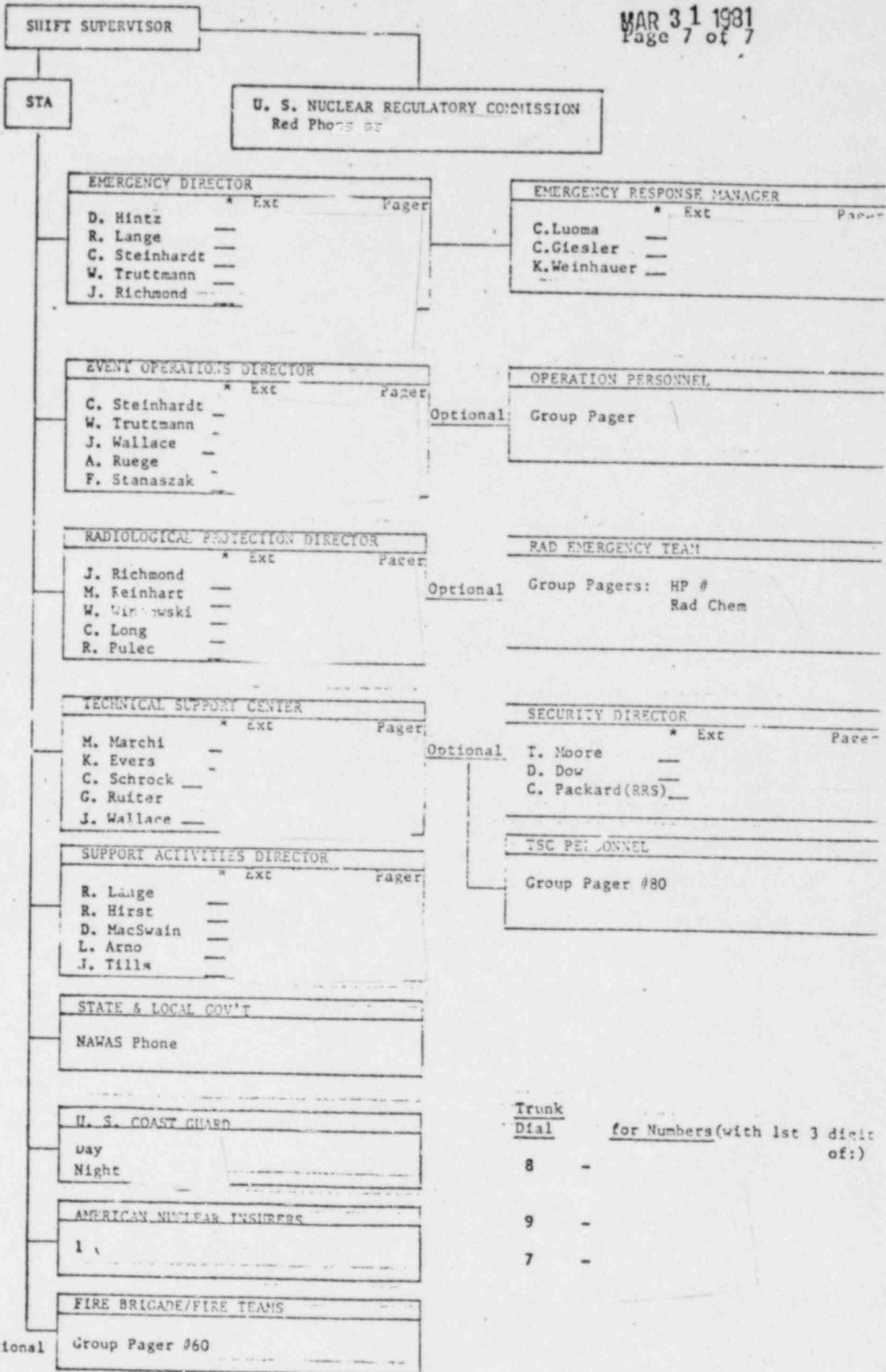
Acknowledge message."

5. American Nuclear Insurers and U.S. Coast Guard using commercial telephone lines and text of previous message omitting NAWAS only sections.

ALERT NOTIFICATION

ACD 12.4

MAR 31 1981
Page 7 of 7



Trunk	Dial	for Numbers (with last 3 digits of:)
8	-	
9	-	
7	-	

WISCONSIN PUBLIC SERVICE CORPORATION

KEWAUNEE NUCLEAR POWER PLANT

ADMINISTRATIVE CONTROL DIRECTIVE

NO. ACD 12.5

TITLE Site Emergency

DATE MAR 31 1981

PAGE 1 OF 7

REVIEWED BY

A. J. Ruyge

APPROVED BY

DKT

1.0 PURPOSE

This procedure describes the actions in response to a condition at the Plant which has been classified as a SITE EMERGENCY per ACD 12.2. A SITE EMERGENCY declaration is to:

1. Assure that response centers are manned,
2. Assure that monitoring teams are dispatched,
3. Assure that personnel required for evacuation of near-site areas are at duty stations if situation degrades,
4. Provide consultation with off-site authorities, and
5. Provide updates for the public through off-site authorities.

2.0 APPLICABILITY

This procedure applies to all plant staff, contractor, and corporate personnel and to those off-site agencies that may be notified during a SITE EMERGENCY.

3.0 DEFINITIONS

3.1 SITE EMERGENCY - events are in process or have occurred which involve actual or likely major failures of plant functions needed for protection of the public. Any releases are not expected to exceed EPA Protective Action Guideline exposure levels except near-site boundary.

4.0 RESPONSIBILITIES

4.1 The Shift Supervisor is responsible for the event classification per ACD 12.2.

4.2 The Shift Supervisor is responsible for ensuring that required immediate notifications have been made and confirmed.

5.0 REQUIREMENTS

5.1 Immediate Response:

5.1.1 Shift Supervisor

1. If fire emergency, actions required by ACD 14.2 should be

KEWAUNEE NUCLEAR POWER PLANT
ADMINISTRATIVE CONTROL DIRECTIVE

NO. ACD 12.5

TITLE

Site Emergency

DATE MAR 31 1981

PAGE 2 OF 7

2. Contact the Shift Technical Advisor (STA).
3. Determine if immediate personnel assembly is required. For personnel assembly, The Shift Supervisor will direct a member of the operating crew to make the following announcement over the Plant Gai-Tronics:

"Attention all personnel. We are experiencing a SITE EMERGENCY. All personnel are requested to report to their assembly areas."

NOTE: Also announce the location of any hazards (fire, abnormally high radiation area) so they can be avoided during personnel assembly.

Sound the plant emergency alarm and repeat the announcement.

NOTE: Emergency assembly areas are described in ACD 12.9, Personnel Accountability.

4. Direct the STA to notify members of the emergency organization and off-site response agencies.

5.1.2 Shift Technical Advisor (STA)

1. Report to the Control Room to be briefed and assess plant conditions.
2. Notify key members of the emergency response organization and specified off-site support agencies in accordance with Figure 12.5-1 and Attachment. The emergency communication system, if needed, is described in ACD 12.7.

WISCONSIN PUBLIC SERVICE CORPORATION

KEWAUNEE NUCLEAR POWER PLANT

ADMINISTRATIVE CONTROL DIRECTIVE

NO. ACD 12.5

TITLE

Site Emergency

DATE MAR 31 1981

PAGE 3 OF 7

5.1.3 Key Emergency Response Personnel

ON-SITE NOTIFICATION	OFF-SITE NOTIFICATION
EMERGENCY DIRECTOR (ED)	
1. Report to the Control Room to be briefed.	1. Report to the plant.
2. Notify Emergency Response Manager (ERM) of the SITE EMERGENCY.	2. Notify Emergency Response Manager (ERM) of the SITE EMERGENCY.
EVENT OPERATIONS DIRECTOR (EOD)	
1. Report to the Control Room to be briefed.	1. Report to the plant.
RADIOLOGICAL PROTECTION DIRECTOR (RPD)	
1. Report to the RPO.	1. Report to the plant.
2. Activate Radiation Emergency Team.	2. Activate Radiation Emergency Team.
3. Prepare to activate Site Access Facility.	3. Prepare to activate Site Access Facility.
TECHNICAL SUPPORT CENTER COORDINATOR (TSCC)	
1. Maintain contact with ED on Plant status.	1. Report to the plant.
2. Activate the Technical Support Center.	2. Activate the Technical Support Center.
SUPPORT ACTIVITIES DIRECTOR (SAD)	
1. Maintain contact with ED on Plant status.	1. Report to the plant.
2. Activate Operational Support Facility.	2. Activate Operational Support Facility.

KEWAUNEE NUCLEAR POWER PLANT

ADMINISTRATIVE CONTROL DIRECTIVE

NO. ACD 12.5

TITLE

Site Emergency

DATE MAR 31 1981

PAGE 4 OF 7

5.2 Subsequent Actions

5.2.1 Shift Supervisor

1. If generating capabilities may be affected by the event, notify WPS Load Dispatcher.
2. Continue to make assessments of plant conditions to determine if a change in the emergency class is warranted.
3. Continue to direct plant operations per Emergency Operating Procedures.

5.2.2 Shift Technical Advisor

1. Continue to monitor plant conditions to ensure adequate core cooling.
2. Respond to inquiries for additional technical information from state and local response agencies if it does not interfere with accident assessment activities.

5.2.3 Emergency Director

1. Continue to keep ERM informed of plant conditions.
2. Maintain communication ties with activated emergency centers.
3. Escalate to General Emergency class if appropriate

OR

Close out or recommend reduction in emergency class by briefing of off-site authorities by phone followed by written summary within 24 hours of close out or class reduction.

5.2.4 Event Operations Director

1. Coordinate operational and Control Room activities through the Shift Supervisor.

5.2.5 Radiation Protection Director

1. Dispatch monitoring teams as specified in RET procedures.
2. Provide meteorology and dose estimates for actual releases to off-site authorities and projections based on known plant conditions.

KEWAUNEE NUCLEAR POWER PLANT
ADMINISTRATIVE CONTROL DIRECTIVE

NO. ACD 12.5

TITLE

Site Emergency

DATE MAR 31 1981

PAGE 5 OF 7

5.2.6 Technical Support Center Coordinator

1. Provide periodic plant status updates to off-site authorities.

5.2.7 Support Activities Director

1. Direct any corrective maintenance activities required to mitigate the consequences of the emergency.

5.2.8 Security Director or Security Force

1. Dispatch an officer to the fishing area and inform people they should leave the site using the following statement WITH NO OTHER INFORMATION GIVEN:

"The plant site has been temporarily closed and you are requested to leave. Please do so at this time."

2. Dispatch an officer to the site entrance at Highway 42 and only admit persons with Kewaunee Nuclear Plant Personnel cards or by authorization of the Emergency Director.
3. Initiate a personnel accountability check per ACD 12.9.
4. If the Site Access Facility is activated, dispatch an officer to assist in access control.

KEWAUNEE NUCLEAR POWER PLANT
ADMINISTRATIVE CONTROL DIRECTIVE

NO. ACD 12.5

TITLE

Site Emergency

DATE MAR 31 1981

PAGE 6 OF 7

ATTACHMENT TO FIGURE 12.5-1
SITE EMERGENCY NOTIFICATION

A.1 The Shift Supervisor or Shift Technical Advisor should contact the following:

1. One member of each key emergency position on Figure 12.5-1 until a representative for each position has been notified and confirmed. The first member in each position can be contacted simultaneously by using pager code #10. Each key person notified by pager should confirm contact by a return telephone call at
2. The NRC using the Emergency Notification System (ENS) red phone.
3. Emergency Teams (Fire, Radiation) using pager system dependent upon type of event and at discretion of Shift Supervisor.
4. The state and local government using the NAWAS line giving the following statement:

"Kewaunee Nuclear calling Warning Center 1, East Central Area, Kewaunee County, and Manitowoc County.

This is (name) (title) at the Kewaunee Nuclear Plant.

An incident has occurred at our facility and we are declaring a SITE EMERGENCY at (time) on (date).

The following conditions exist. (One or two sentence description of the event.) _____

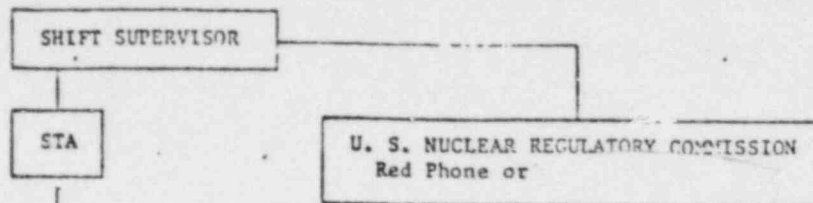
We recommend that state and county governments activate their Emergency Operations Centers and dispatch key emergency response personnel.

We will keep you informed of the situation.

Any confirming calls or return contacts should be through commercial telephone: Area Code _____

Acknowledge message."

5. American Nuclear Insurers and U.S. Coast Guard using commercial telephone lines and text of previous message omitting NAWAS only sections.



EMERGENCY DIRECTOR		
	* Ext	Pager
D. Hintz	---	---
R. Lange	---	---
C. Steinhardt	---	---
W. Truttmann	---	---
J. Richmond	---	---

EMERGENCY RESPONSE MANAGER		
	* Ext	Pager
C. Luoma	---	---
C. Giesler	---	---
K. Weinbauer	---	---

EVENT OPERATIONS DIRECTOR		
	* Ext	Pager
C. Steinhardt	---	---
W. Truttmann	---	---
J. Wallace	---	---
A. Ruege	---	---
F. Stanaszak	---	---

OPERATION PERSONNEL	
Optional	Group Pager

RADIOLOGICAL PROTECTION DIRECTOR		
	* Ext	Pager
J. Richmond	---	---
M. Reinhart	---	---
W. Winnowski	---	---
C. Long	---	---
R. Pulec	---	---

RAD EMERGENCY TEAM	
Optional	Group Pagers: HP # Rad Chem.

TECHNICAL SUPPORT CENTER		
	* Ext	Pager
M. Marchi	---	---
K. Evers	---	---
C. Schrock	---	---
G. Ruiter	---	---
J. Wallace	---	---

SECURITY DIRECTOR		
	* Ext	Pager
T. Moore	---	---
D. Dow	---	---
C. Packard (RRS)	---	---

SUPPORT ACTIVITIES DIRECTOR		
	* Ext	Pager
R. Lange	---	---
R. Hirst	---	---
D. MacSwain	---	---
L. Arno	---	---
J. Tilla	---	---

TSC PERSONNEL	
Optional	Group Pager

STATE & LOCAL GOV'T	
NAWAS Phone	

U. S. COAST GUARD	
Day	
Night	

AMERICAN NUCLEAR INSURERS	
1	

FIRE BRIGADE/FIRE TEAMS	
Optional	Group Pager

Trunk	Dial	for Numbers (with 1st 3 digits of:)
8	-	
9	-	
7	-	

WISCONSIN PUBLIC SERVICE CORPORATION

KEWAUNEE NUCLEAR POWER PLANT
ADMINISTRATIVE CONTROL DIRECTIVE

NO. ACD 12.6

TITLE General Emergency

DATE MAR 31 1981 PAGE 1 OF 7

REVIEWED BY Al Puzg

APPROVED BY D.H.H.

1.0 PURPOSE

This procedure describes the actions in response to a condition at the plant which has been classified as a GENERAL EMERGENCY per ACD 12.2. A GENERAL EMERGENCY declaration is to:

1. Initiate predetermined protective actions for the public.
2. Initiate additional measures as indicated by actual or potential releases,
3. Provide consultation with off-site authorities, and
4. Provide updates for the public through off-site authorities.

2.0 APPLICABILITY

This procedure applies to all plant staff, contractor, and corporate personnel and to those off-site agencies that may be notified during a GENERAL EMERGENCY.

3.0 DEFINITIONS

- 3.1 GENERAL EMERGENCY - Events are in process or have occurred which involve actual or imminent substantial core degradation or melting with potential for loss of containment integrity. Releases can be reasonably expected to exceed EPA Protective Action Guideline exposure levels off-site for more than the immediate site area.

4.0 RESPONSIBILITIES

- 4.1 The Shift Supervisor is responsible for the event classification per ACD 12.2.
- 4.2 The Shift Supervisor is responsible for ensuring that required immediate notifications have been made and confirmed.

5.0 REQUIREMENTS

5.1 Immediate Response

5.1.1 Shift Supervisor

1. If fire emergency, actions required by ACD 14.2 should be

KEWAUNEE NUCLEAR POWER PLANT
ADMINISTRATIVE CONTROL DIRECTIVES

NO. ACD 12.6

TITLE

General Emergency

DATE MAR 31 1981

PAGE 2 OF 7

2. Contact the Shift Technical Advisor (STA).
3. Determine if immediate personnel assembly is required. For personnel assembly, the Shift Supervisor will direct a member of the operating crew to make the following announcement over the Plant Gai-Tronics:

"Attention all personnel. We are experiencing a GENERAL EMERGENCY. All personnel are requested to report to their assembly areas."

NOTE: Also announce the location of any hazards (fire, abnormally high radiation area) so they can be avoided during personnel assembly.

Sound the plant emergency alarm and repeat the announcement.

NOTE: Emergency assembly areas are described in ACD 12.9, Personnel Accountability.

4. Direct the STA to notify members of the emergency organization and off-site response agencies.

5.1.2 Shift Technical Advisor (STA)

1. Report to the Control Room to be briefed and assess plant conditions.
2. Notify key members of the emergency response organization and specified off-site support agencies in accordance with Figure 12.6-1 and Attachment. The emergency communication system, if needed, is described in ACD 12.7.

KEWAUNEE NUCLEAR POWER PLANT
ADMINISTRATIVE CONTROL DIRECTIVE

NO. ACD 12.6

TITLE

General Emergency

DATE MAR 31 1981

PAGE 3 OF 7

5.1.3 Key Emergency Response Personnel

ON-SITE NOTIFICATION

OFF-SITE NOTIFICATION

EMERGENCY DIRECTOR (ED)

1. Report to the Control Room to be briefed.
2. Notify Emergency Response Manager (ERM) of the GENERAL EMERGENCY.

1. Report to the plant.
2. Notify Emergency Response Manager (ERM) of the GENERAL EMERGENCY.

EVENT OPERATIONS DIRECTOR (EOD)

1. Report to the Control Room to be briefed.

1. Report to the plant.

RADIOLOGICAL PROTECTION DIRECTOR (RPD)

1. Report to the RPO.
2. Activate Radiation Emergency Team.
3. Activate Site Access Facility.

1. Report to the plant.
2. Activate Radiation Emergency Team.
3. Activate Site Access Facility.

TECHNICAL SUPPORT CENTER COORDINATOR (TSCC)

1. Maintain contact with ED on Plant status.
2. Activate the Technical Support Center.

1. Report to the plant.
2. Activate the Technical Support Center

SUPPORT ACTIVITIES DIRECTOR (SAD)

1. Maintain contact with ED on Plant status.
2. Activate Operational Support Facility.

1. Report to the plant.
2. Activate Operational Support Facility.

KEWAUNEE NUCLEAR POWER PLANT
ADMINISTRATIVE CONTROL DIRECTIVE

NO. ACD 12.6

TITLE

General Emergency

DATE MAR 31 1981

PAGE 4 OF 7

5.2 Subsequent Actions

5.2.1 Shift Supervisor

1. If generating capabilities may be affected by the event, notify WPS Load Dispatcher.
2. Continue to make assessments of plant conditions to determine if a change in the emergency class is warranted.
3. Continue to direct plant operations per Emergency Operating Procedures.

5.2.2 Shift Technical Advisor

1. Continue to monitor plant conditions to ensure adequate core cooling.
2. Respond to inquiries for additional technical information from state and local response agencies if it does not interfere with accident assessment activities.

5.2.3 Emergency Director

1. Continue to keep ERM informed of plant conditions.
2. Maintain communication ties with activated emergency centers.
3. Close out or recommend reduction of emergency class by briefing off-site authorities followed by written summary within 24 hours of closeout or reduction.

5.2.4 Event Operations Director

1. Coordinate operational and Control Room activities through Shift Supervisor.

5.2.5 Technical Support Center Coordinator

1. Provide periodic update of plant conditions to the state and NRC.

5.2.6 Radiation Protection Director

1. Dispatch monitoring teams as specified in RET procedures.
2. Provide meteorology and dose estimates for actual releases to off-site authorities and projections based on available plant condition information.

KEWAUNEE NUCLEAR POWER PLANT

ADMINISTRATIVE CONTROL DIRECTIVE

NO. ACD 12.6

TITLE

General Emergency

DATE MAR 31 1981

PAGE 5 OF 7

5.2.7 Support Activities Director

1. Direct any corrective maintenance activities required to mitigate the consequences of the emergency.

5.2.8 Security Director or Security Force

1. Dispatch an officer to the fishing area and inform people they should leave the site using the following statement WITH NO OTHER INFORMATION GIVEN:

"The plant site has been temporarily closed and you are requested to leave. Please do so at this time."

2. Dispatch an officer to the site entrance at Highway 42 and only admit persons with Kewaunee Nuclear Plant Personnel cards or by authorization of the Emergency Director.
3. Initiate a personnel accountability check per ACD]2.9.
4. Dispatch an officer to assist in personnel access control at the Site Access Facility.

KEWAUNEE NUCLEAR POWER PLANT
ADMINISTRATIVE CONTROL DIRECTIVE

NO. ACD 12.6

TITLE

General Emergency

DATE MAR 31 1981

PAGE 6 OF 7

ATTACHMENT TO FIGURE 12.6-1
GENERAL EMERGENCY NOTIFICATION

A.1 The Shift Supervisor or Shift Technical Advisor should contact the following:

1. One member of each key emergency position on Figure 12.6-1 until a representative for each position has been notified and confirmed. The first member in each position can be contacted simultaneously by using pager code #10. Each key person notified by pager should confirm contact by a return telephone call at
2. The NRC using the Emergency Notification System (ENS) red phone.
3. Emergency Teams (Fire, Radiation) using pager system dependent upon type of event and at discretion of Shift Supervisor.
4. The state and local government using the NAWAS line giving the following statement:

"Kewaunee Nuclear calling Warning Center 1, East Central Area, Kewaunee County, and Manitowoc County.

This is (name) (title) at the Kewaunee Nuclear Plant.

An incident has occurred at our facility and we are declaring a GENERAL EMERGENCY at (time) on (date).

The following conditions exist. (One or two sentence description of the event.) _____

We recommend that state and county governments activate their Emergency Operations Centers and dispatch key emergency response personnel.

We will keep you informed of the situation.

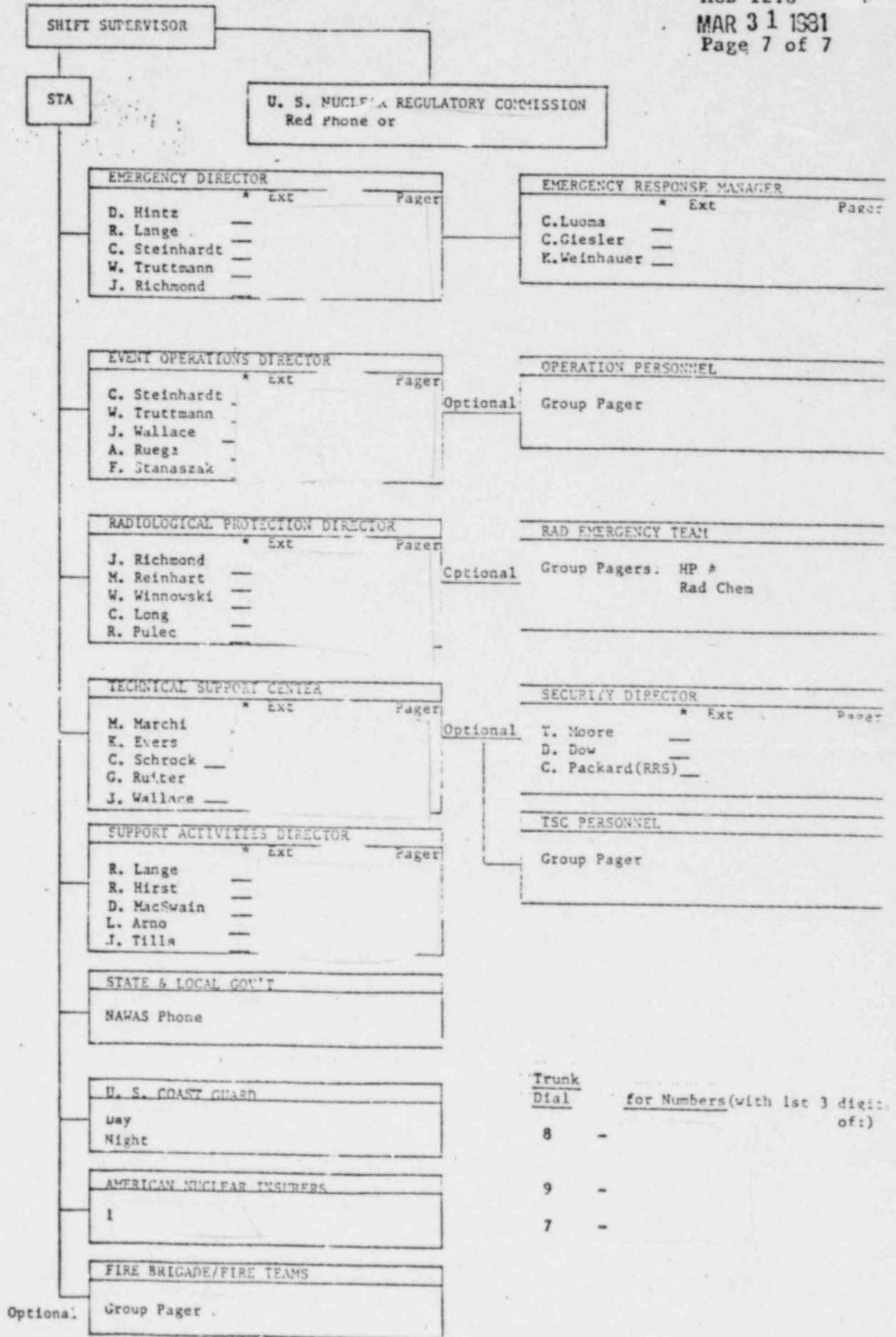
Any confirming calls or return contacts should be through commercial telephone: Area Code _____

Acknowledge message."

5. American Nuclear Insurers and U.S. Coast Guard using commercial telephone lines and text of previous message omitting NAWAS only sections.

GENERAL EMERGENCY NOTIFICATION

ACD 12.6
MAR 31 1981
Page 7 of 7



KEWAUNEE NUCLEAR POWER PLANT

ADMINISTRATIVE CONTROL DIRECTIVE

NO.

ACD 12.7

Emergency Communication System
TITLE

DATE MAR 31 1981

PAGE 1 OF 10

REVIEWED BY

ad Ruyge

APPROVED BY

D7116

1.0 PURPOSE

This procedure describes the methods used to alert on-site personnel of an emergency condition; the methods for notifying and mobilizing emergency personnel to augment the on-site emergency organization; and the methods for notifying federal, state, and local authorities.

2.0 APPLICABILITY

This procedure applies to all plant personnel and contract personnel and to those off-site agencies that may be contacted during an emergency condition at the plant.

3.0 DEFINITIONS

NAWAS - National Warning System - black phone located in Technical Support Center serving as direct communication link to state and local authorities.

NRC - Emergency Notification System - red phone located in Control Room Shift Supervisor's office as direct communication link to the NRC in Bethesda, MD.

Gai-Tronics - internal plant paging/communication system.

Tone and Voice Radio Pagers - described in Attachment 12.7-1.

4.0 RESPONSIBILITIES

4.1 The Shift Supervisor is responsible for initial notification as detailed in ACD's 12.3, 12.4, 12.5, and 12.6. The Shift Technical Advisor will assist.

4.2 After facility activation, each emergency facility director (RPD, SAD, TSCC) will assure that communication links, in their respective facility as shown in Figure 12.7-1 are manned.

4.3 The Shift Supervisor is responsible for daily testing of the dedicated phone to the NRC in Bethesda.

4.4 The Shift Technical Advisor is responsible for testing the NAWAS phone at least monthly to assure its operability.

KEWAUNEE NUCLEAR POWER PLANT

ADMINISTRATIVE CONTROL DIRECTIVE

NO.

ACD 12.7

TITLE

Emergency Communication Sytem

DATE MAR 31 1981

PAGE 2 OF 10

5.0 REQUIREMENTS

5.1 The required initial notifications are described in each emergency class ACD:

- ACD 12.3, Unusual Event
- ACD 12.4, Alert
- ACD 12.5, Site Emergency
- ACD 12.6, General Emergency

5.2 On-site personnel are notified of an emergency condition via the Plant Gai-Tronics System.

5.3 Off-site WPS Emergency Response Personnel are contacted by commercial phone or pagers as described in Attachment 12.7-1.

5.4 Attachment 12.7-2 lists commercial phone lines.

5.5 The National Warning System (NAWAS) is described in Attachment 12.7-3.

ATTACHMENT 12.7-1

- Page 1 of 2 -

A.1 Tone and Voice Radio Pagers are assigned to Personnel as shown with call numbers on the Emergency Call List.

A.2 Whenever it is necessary to contact a person on the Emergency Call List and he is not on site, the home telephone number should be called first. If he cannot be reached at home, contact should then be attempted by using the person's individual call number. A group of individuals may be contacted by using the group call number. Tone and voice contact by pagers is effective within 15 mile radius of the transmitting station. Only tone contacts can be made outside the 15 mile radius.

A.3 How to Place a Page

3.1 Determine the two-digit pager code for the party or group you wish to contact on pager assignment list.

3.2 Dial the terminal access code on any plant extension (316 for Kewaunee site transmitter 315 for Green Bay transmitter).

a. When the terminal answers and responds with a beep, go to Step 3.3.

b. If you hear a "busy" signal, hang up and try again. *

3.3 Dial the two digit party or group number (this number must be preceded by a 1 when using Green Bay terminal).

3.4 Listen for the acknowledge (beeping) tone, indicating page being transmitted.

3.5 When the beeping tone stops, speak your message to the called party. You have about 20 seconds to talk*. Your allotted time has expired when you hear the "busy" tone returned to the telephone. Hang up the phone.

3.6 Each page must be sent through both transmitters (the plant and Green Bay); **two separate calls must be made to ensure adequate area coverage.**

A.4 Tone and Voice Pager Operation

4.1 Set the on-off switch on the bottom of the pager to the ON position (white dot visible). The alert tone will sound to indicate battery condition. If tone is absent, replace or recharge batteries.

4.2 Press the reset touch bar on top of the pager. This resets the pager to standby and eliminates the squelch noise.

ATTACHMENT 12.7-1 (Cont.)

- Page 2 of 2 -

- 4.3 When you are paged and the alert tone is heard, the voice message is heard automatically. Following the alert tone, volume control can be adjusted for desired level.
 - 4.4 After a message, press the touch bar to reset the unit.
 - 4.5 Key emergency response personnel and their alternates should telephone the plant at . after receipt of a page: signal/message to confirm that contact has been made.
- * The black phone next to the terminal in the Shift Supervisor's Office is a priority phone and will interrupt any page in progress. There is no allotment time for priority calls.

PAGER ASSIGNMENT LIST
EXTENSION

PAGER

Key Personnel

- D. Hintz
- R. Lange
- C. Steinhardt
- J. Richmond
- M. Marchi
- T. Moore

Operations Personnel

- W. Truttman
- J. Wallace
- F. Stanazak
- J. Ruege
- G. Ruitter
- D. Braun
- J. Krueger
- D. Masarik
- B. Wagner
- R. Zube

Radiation Team (Health Physics)

- M. Reinhart
- C. Long
- D. Finlaw
- W. Galarneau
- R. Hartfield
- T. Martinson
- D. Morgan
- E. Swanson

Radiation Team (Chemistry)

- W. Winnowski
- P. Dufek
- W. Flint
- J. Madden
- R. Snodgrass

OPERATIONAL ASSIGNMENT LIST (CONT'D)

Operational Support and Fire Teams ---

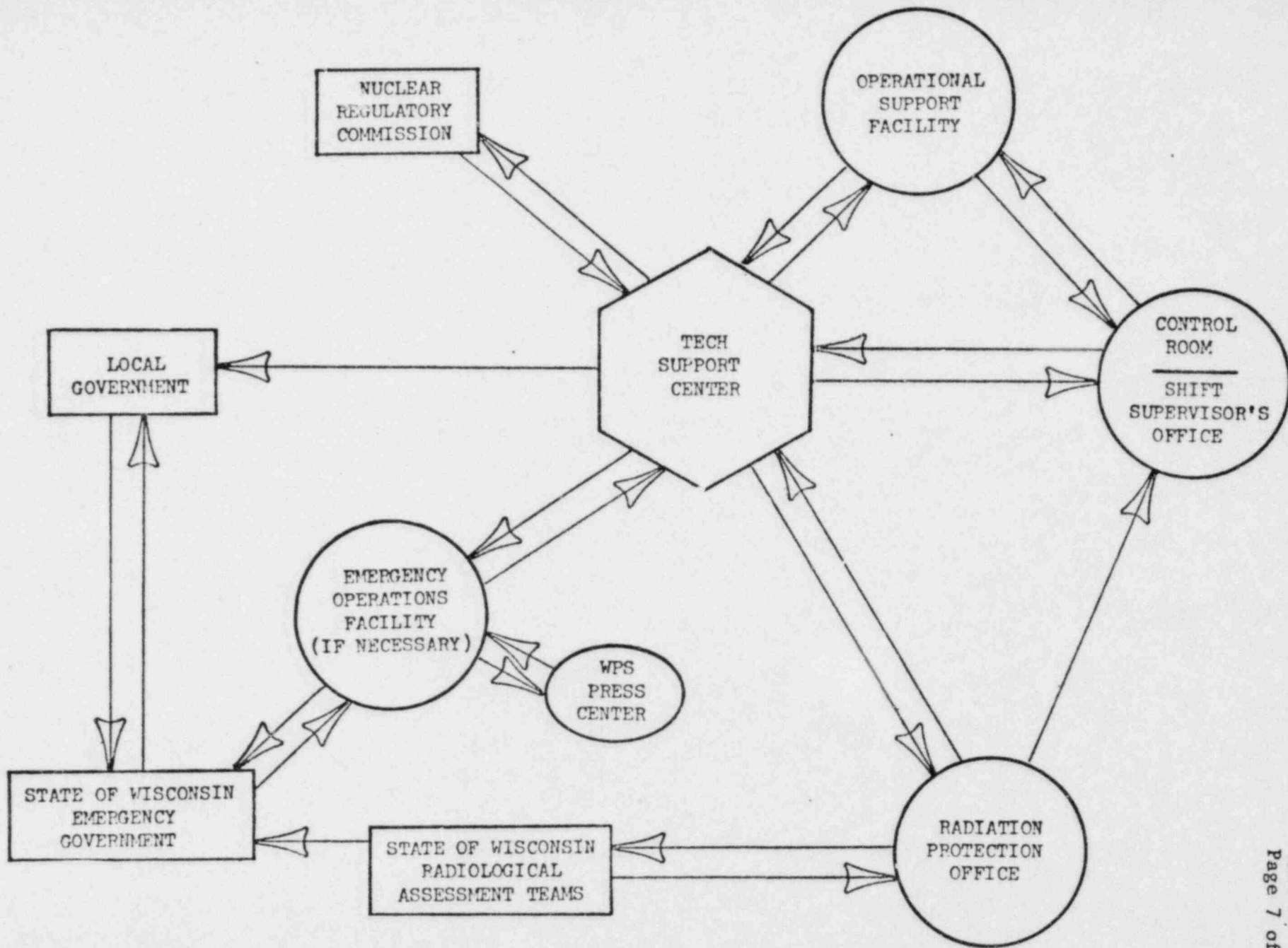
- T. Burdick
- D. Seebart
- J. Brown
-
- R. Hirst
- D. MacSwain
- L. Arno
- R. Sitzman
- D. Molzahn
- J. Doberstein
- G. Youngwirth
- C. Schaefer
- L. Koch
- R. Hoffman
- L. Haworth
- T. Ewald
- F. Giesler
- L. Drossart
- D. Dow
- T. Kaiser
- L. Gerroll
- K. Gretz
- N. Kane
- M. Berger

Plant and Corporate Technical Support

- K. Evers
- M. Kwitek
- J. Tills
- R. Pulec
- D. Weinberg
- D. Will
- D. Sauer
- D. Nalepka
- S. Bohlman
- J. Holly
-
- C. Giesler
- C. Luoma
- K. Weinbauer
- C. Schrock

PUNK DIAL FOR NUMBERS (WITH 1ST THREE DIGITS OF):

- 8
- 9
- 7



EMERGENCY COMMUNICATIONS NETWORK

FIGURE 12.7-1

ATTACHMENT 12.7-2

SUPPORT AGENCIES - COMMERCIAL PHONE NUMBERS

NRC - Region III - Chicago Operations Office		1
Wisc. Dept. Health & Social Services Emergency Warning Center		1
State Police - Fond du Lac		1
Kewaunee County Emergency Gov't. (Sheriff's Dept.)		9
Manitowoc County Emergency Gov't (Sheriff's Dept.)		7
Department of Energy (Bob Bauer or Fred C. Mattmueller)		1
Point Beach Nuclear Power Plant		7
U.S. Coast Guard	(Day)	1
	(Night)	1
National Weather Service		
Medical Assistance		
Two Rivers Hospital		7
Dr. Weld/Dr. Kaner		7
U.W. Hospital		1
Dr. Larson		1
American Nuclear Insurers		1
Westinghouse	(Day)	1
	(Night)	1
Fluor Power Services		1
C. Agan	(Office)	1
	(Home)	1

ATTACHMENT 12.7-3

- C.1 National Warning System (NAWAS) - The black telephone and loudspeaker located in the Technical Support Center are part of the National Warning System. Points throughout the state as shown in attached drawing can be accessed simultaneously by removing the headset. Messages are directed to the Kewaunee Sheriff's Office, the Manitowoc Sheriff's Office, the East Central Warning Center in Fond du Lac and the Wisconsin Warning Center I & II in Madison.
- C.2 Telephone operation is achieved by removing the headset and depressing the PUSH-TO-TALK button on the inside face of the headset. Messages are of the form:
- "Kewaunee Nuclear calling Warning Center I, East Central Area, Kewaunee County, etc..... This is (name) at the Kewaunee Nuclear Plant."

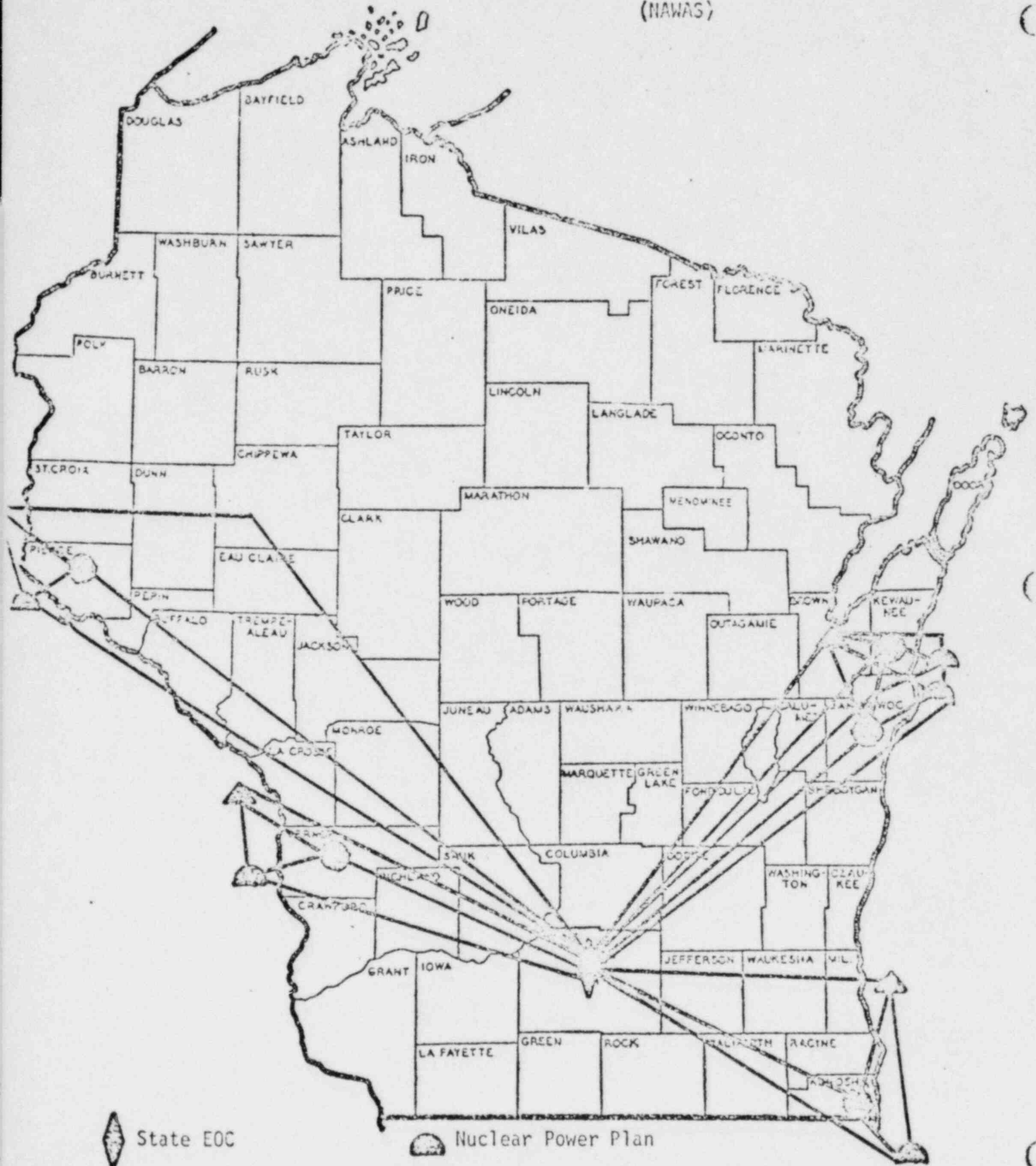
Follow this with the desired message.

- C.3 Periodic tests by the Shift Technical Advisor will be performed as follows:

Depress the PUSH-TO-TALK switch in headset and state, "This is a test. Kewaunee Nuclear calling Wisconsin Warning Center One; Wisconsin acknowledge test."

WISCONSIN WARNING SYSTEM

(NAWAS)



State EOC

Nuclear Power Plant

County Warning Center

Weather Service Office

KEWAUNEE NUCLEAR POWER PLANT

ADMINISTRATIVE CONTROL DIRECTIVE

NO. ACD 12.8

TITLE Activation and Staffing
of Emergency Centers

DATE MAR 21 1981

PAGE 1 OF 8

REVIEWED BY *A. J. Breyer*APPROVED BY *D. H. K.*1.0 PURPOSE

This procedure describes the requirements for activation and staffing of emergency centers after the declaration of a plant emergency.

2.0 APPLICABILITY

This procedure applies to all emergency response personnel who may be called upon to activate an emergency center.

3.0 DEFINITIONS

- 3.1 EMERGENCY ASSEMBLY AREAS - Designated areas detailed in ACD 12.9 which may serve as assembly points for personnel during a plant emergency.
- 3.2 INTERIM OPERATIONAL SUPPORT FACILITY - The office area on the Turbine Building mezzanine level to be used as an assembly and staffing area for maintenance and support personnel during a plant emergency.
- 3.3 INTERIM TECHNICAL SUPPORT CENTER - The assembly room in the Administration Building, which will serve as a coordination center for engineering and management personnel supporting the operating staff during an emergency.
- 3.4 SITE ACCESS FACILITY (SAF) - The trailer located on the West boundary of WPS property which may serve as an access control station for the plant site.
- 3.5 EMERGENCY OPERATIONS FACILITY (EOF) - An area in the Training Building used as a headquarters for the Emergency Response Manager, which may also house senior NRC and state and local government officials. EOF activation and staffing is detailed in corporate directives.
- 3.6 RADIATION PROTECTION OFFICE (RPO) - An area in the plant which serves as the access control point for the controlled area and the headquarters for Health Physics activities.

4.0 RESPONSIBILITIES

- 4.1 The Emergency Director has overall responsibility for ensuring that required emergency centers are activated and staffed.
- 4.2 The Technical Support Center Coordinator (TSCC) has responsibility for directing the activities in the Technical Support Center.

WISCONSIN PUBLIC SERVICE CORPORATION

KEWAUNEE NUCLEAR POWER PLANT

ADMINISTRATIVE CONTROL DIRECTIVE

NO. ACD 12.8

TITLE Activation and Staffing
of Emergency Centers

DATE MAR 31 1981 PAGE 2 OF 8

- 4.3 The Support Activities Director (SAD) has responsibility over the activities in the Operational Support Facility (OSF).
- 4.4 The Security Director has the responsibility through the use of Security Force for access control at the Security Building or at the Site Access Facility (SAF) during a plant emergency.
- 4.5 The Radiological Protection Director has responsibility over all activities in the Radiation Protection Office (RPO) and is responsible for providing personnel for radiological activities.

5.0 REQUIREMENTS

5.1 Activation of the Technical Support Center (TSC)

- 5.1.1 The TSC shall be activated during an Alert, Site Emergency, General Emergency, or at the request of the Emergency Director.
- 5.1.2 The Technical Support Center Coordinator (TSCC) will verify that the actions on the TSC Activation Checklist (Table 12.8-1) have been performed.
- 5.1.3 The TSCC is required to notify individuals to staff the TSC in accordance with Table 12.8-2.
- 5.1.4 The TSCC will maintain contact with the Event Operations Director on the status of plant conditions.
- 5.1.5 The TSCC will keep off-site agencies informed of plant conditions.

5.2 Activation of Operational Support Facility (OSF)

- 5.2.1 The OSF shall be activated during an Alert, Site Emergency, or General Emergency and may be activated during an Unusual Event for personnel assembly and briefing.
- 5.2.2 The Support Activities Director is responsible for activating the OSF.
- 5.2.3 The OSF will be staffed by plant maintenance personnel and supervisors, and non-shift operating personnel.
- 5.2.4 The SAD will:
- report to the OSF and verify that radiation levels are less than 100 mr/hr.

WISCONSIN PUBLIC SERVICE CORPORATION

KEWAUNEE NUCLEAR POWER PLANT

ADMINISTRATIVE CONTROL DIRECTIVE

NO. ACD 12.8

TITLE Activation and Staffing
of Emergency Centers

DATE MAR 31 1981

PAGE 3 OF 8

- keep OSF Log of activities and personnel availability.
- brief all personnel present
- plan emergency maintenance repairs to ensure that all required work is performed and documented

5.2.5 The SAD may contact additional contractor support personnel if needed with the Emergency Director's authorization.

5.3 Radiation Protection Office (RPO) Emergency Operations

5.3.1 The RPO will be the primary point for all controlled area entries.

5.3.2 The RPD will have the authority to stop any controlled area entry unless authorized by the Emergency Director.

5.3.3 The RPD will direct the Radiation Emergency Team (RET) to perform the actions specified in RET procedures.

5.4 Site Access Facility (SAF) Activation

5.4.1 The Site Access Facility will be activated during a General Emergency, or at the request of the Emergency Director.

5.4.2 The RPD will appoint a Radiation Emergency Team member to coordinate activities at the SAF.

5.4.3 The Radiation Emergency Team member assigned to the SAF is responsible for monitoring all personnel entries and exits.

5.4.4 The Security Director will provide security personnel for crowd and access control at the SAF.

KEWAUNEE NUCLEAR POWER PLANT
ADMINISTRATIVE CONTROL DIRECTIVE

NO. ACD 12.8

TITLE Activation and Staffing
of Emergency Centers

DATE MAR 31 1981

PAGE 4 OF 8

TABLE 12.8-1

TSC ACTIVATION CHECKLIST

- 1) Start time:
- 2) Radiation Levels (if applicable)

Obtain E-530:

Do a battery check, calibration sticker check, and then measure radiation levels.

NOTE: If levels are above 100 mr/hr contact RPD and Emergency Director to see if TSC activation should continue.

Obtain Radalert:

Push the test button to verify operation. If operable, set on lowest range that doesn't alarm.

- 3) _____ Record TSC activation started in logbook with current radiation levels.
- 4) _____ Verify communication capability with Control Room, Operational Support Facility, and Radiation Protection Office
- 5) _____ Notify additional TSC Staff and request they report to the site. List individuals contacted.
- 6) _____ Activate the data link to Prodac computer (connection must be made in Relay Room, rack 188 before operation).
- 7) _____ Fill out a copy of the Significant Event Checklist with all available information.

Checklist complete:

Name: _____ Time _____

TABLE 12.8-2
TECHNICAL SUPPORT CENTER STAFF

The Technical Support Center Evaluation Staff shall be assembled from the list of personnel below. It is intended that the staff be composed of one individual from each of the first four disciplines listed. Attempt to staff the Technical Support Center by contacting the first individual in each group. If individuals are unavailable or filling other positions, continue notification trying to reach a total of five people, covering as many disciplines as possible.

NUCLEAR

C. Schrock
J. Wallace
D. Ristau
R. Draheim
D. Sauer
D. Nalepka

PAGER

REACTOR ENGINEER

K. Evers
M. Kwitek
S. Bohlman
J. Holly

MECHANICAL/SYSTEMS

K. Weinbauer
A. Ruege
G. Ruitter
W. White
D. Weinberg
R. Draheim
J. Krueger

ELECTRICAL/I & C

J. Tills
D. Will
D. Molzahn
D. MacSwain
L. Arno

CHEMISTRY

M. Reinhart
W. Winnowski
R. Pulec
C. Smoker

CHECKLIST FOR NOTIFICATION OF SIGNIFICANT EVENTS
MADE IN ACCORDANCE WITH 10 CFR 50.72

ACD 12.8
MAR 31 1981
Page 6 of 8

A. Identification:

Date _____ Time _____ Name of Person Making Report _____
Licensee _____ Facility Affected _____
Applicable Part of 10 CFR 50.72 _____

B. Description:

Date of Event _____ Time _____
Description of What Happened _____

C. Consequences of Event: (Complete depending on type of event)

Injuries _____ Fatalities _____
Contamination (personnel) _____ (property) _____
Overexposures (known/possible) _____
Safety Hazard (describe - actual/potential) _____

Offsite Radiation Levels _____
Integrated Dose _____ Location _____
Meteorology (wind speed) _____ From (direction) _____
Weather Conditions (rain, clear, overcast, temperature) _____
Equipment/Property Damage _____

D. Cause of Event:

E. Licensee Actions:

Taken _____
Planned _____

Emergency Plan Activated (Yes/No) _____ Classification of Emergency¹ _____

Resident Inspector Notified (Yes/No) _____ State Notified (Yes/No) _____

Press Release Planned (Yes/No) _____ News Media Interest (Yes/No) _____

Local/National _____

F. Current Status: (Complete depending on type of event)

1. Reactor Systems Status _____

Power Level: Before Event _____ After Event _____

Pressure _____ Temp. (t_{hot}) _____ (t_{cold}) _____

RCS Flow (Yes/No) _____ Pumps On (Yes/No) _____

Heat Sink: Condenser _____ Steam Atm. Dump _____

Other _____ Sample Taken (Yes/No) _____ Activity Level _____

ECCS Operating (Yes/No) _____ ECCS Operable (Yes/No) _____

ESF Actuation (Yes/No) _____

PZR or RX Level _____ Possible Fuel Damage (Yes/No) _____

S/G Levels _____ Feedwater Source/Flow _____

Containment Pressure _____ Safety Relief Valve Actuation (Yes/No) _____

Containment Water Level Indication _____

Equipment Failures _____

Normal Offsite Power Available (Yes/No) _____

Major Busses/Loads Lost _____

Safeguards Busses Power Source _____

D/G Running (Yes/No) _____ Loaded (Yes/No) _____

¹ See Emergency Action Levels, Appendix 1, NUREG-0654, Revision 1, Criteria for Preparation and Evaluation of Radiological Emergency Response Plans and Preparedness in Support of Nuclear Power Plants.

2. Radioactivity Release

Liquid/Gas _____ Location/Source _____
Release Rate _____ Duration _____
Stopped (Yes/No) _____ Release Monitored (Yes/No) _____
Amount of Release _____ Tech Spec. Limits _____
Radiation Levels in Plant _____ Areas Evacuated _____

3. Security/Safeguards ²

Bomb Threat: Search Conducted (Yes/No) _____ Search Results _____

Site Evacuated (Yes/No) _____

Intrusion: Insider _____ Outsider _____

Point of Intrusion _____ Extent of Intrusion _____

Apparent Purpose _____

Strike/Demonstrations: Size of Group _____

Purpose _____

Sabotage: Radiological (Yes/No) _____ Arson (Yes/No) _____

Equipment/Property _____

Extortion: Source (phone, letter, etc.) _____

Location of Letter _____

Demands _____

General: Firearms involved (Yes/No) _____ Violence (Yes/No) _____

Control of Facility Compromised or Threatened (Yes/No) _____

Stolen/Missing Material _____

Agencies Notified (FBI, State Police, Local Police, etc.) _____

Media Interest (present, anticipated) _____

² See 10 CFR 73.71(c), effective April 6, 1981.

WISCONSIN PUBLIC SERVICE CORPORATION

KEWAUNEE NUCLEAR POWER PLANT

ADMINISTRATIVE CONTROL DIRECTIVE

NO. ACD 12.9

TITLE Personnel Accountability

DATE MAR 31 1981 PAGE 1 OF 4

REVIEWED BY *A. J. Pregel*

APPROVED BY *D. H. S.*

1.0 PURPOSE

The purpose of this Administrative Control Directive is to define the responsibilities and requirements during a personnel accountability check.

2.0 APPLICABILITY

This ACD applies to all personnel on site during a declared Personnel Accountability Check or Plant emergency.

3.0 DEFINITIONS

- 3.1 Personnel Accountability Check - a determination of the location of all personnel in the Protected Area.
- 3.2 Emergency Assembly Areas - designated areas listed in the Attachment and shown in Figure 12.9-1 serving as assembly points for personnel during a plant emergency.
- 3.3 Assembly Area Coordinator - the person designated at each assembly point to contact the Emergency Director. If person in charge is not present at an assembly point, this duty will be assumed by senior plant staff member at the assembly point.

4.0 RESPONSIBILITIES

- 4.1 The Emergency Director, Security, or Shift Supervisor is responsible for initiating the Personnel Accountability Check.
- 4.2 Each Assembly Area Coordinator is responsible for providing the Security Director with an accurate count of the number of personnel at his Assembly Area.
- 4.3 The Security Force is responsible for providing the Security Director with an accurate count of the personnel in the Protected Area.

5.0 REQUIREMENTS

5.1 Personnel Accountability during a plant emergency.

- 5.1.1 The Security Force will utilize the dosimeter/TLD racks and sign in sheets as applicable to determine the total number of personnel within the Protected Area. During a Personnel Accountability Check, no personnel will be allowed to enter or exit the Protected Area without specific authorization from the Emergency Director.

KEWAUNEE NUCLEAR POWER PLANT

ADMINISTRATIVE CONTROL DIRECTIVE

NO.	ACD 12.9
TITLE	Personnel Accountability
DATE	MAR 31 1967
PAGE	2 OF 4

- 5.1.2 Assembly Areas and Assembly Area Coordinators are shown in Attachment and Figure 12.9-1.
- 5.1.3 After the total number of people at all assembly areas have been determined, a roll call by name will be held at each assembly area to verify a correct list.
- 5.1.4 Search teams will be organized by the Emergency Director or Security Director as applicable.
- 5.2 Personnel Accountability during a Site Evacuation
- 6.2.2 If after personnel assembly, the Emergency Director decides that evacuation of the site is required, he will instruct Assembly Area Coordinators on means and route of evacuation and a relocation site.
- 5.2.2 A member of the Security Force will take the Visitor Register and Log Book and the Plant Staff Daily Check-in Sheet to the relocation site.
- 5.2.3 The Shift Supervisor, RPD, SAD, TSCC, and Fire Brigade Team Leaders will account for their personnel and report to the Security Director.
- 5.2.4 The location of all personnel will be verified against the Visitors Register and Staff Checkin Sheet.
- 5.2.5 Search teams will be organized by the Emergency Director, or Security Director if required.

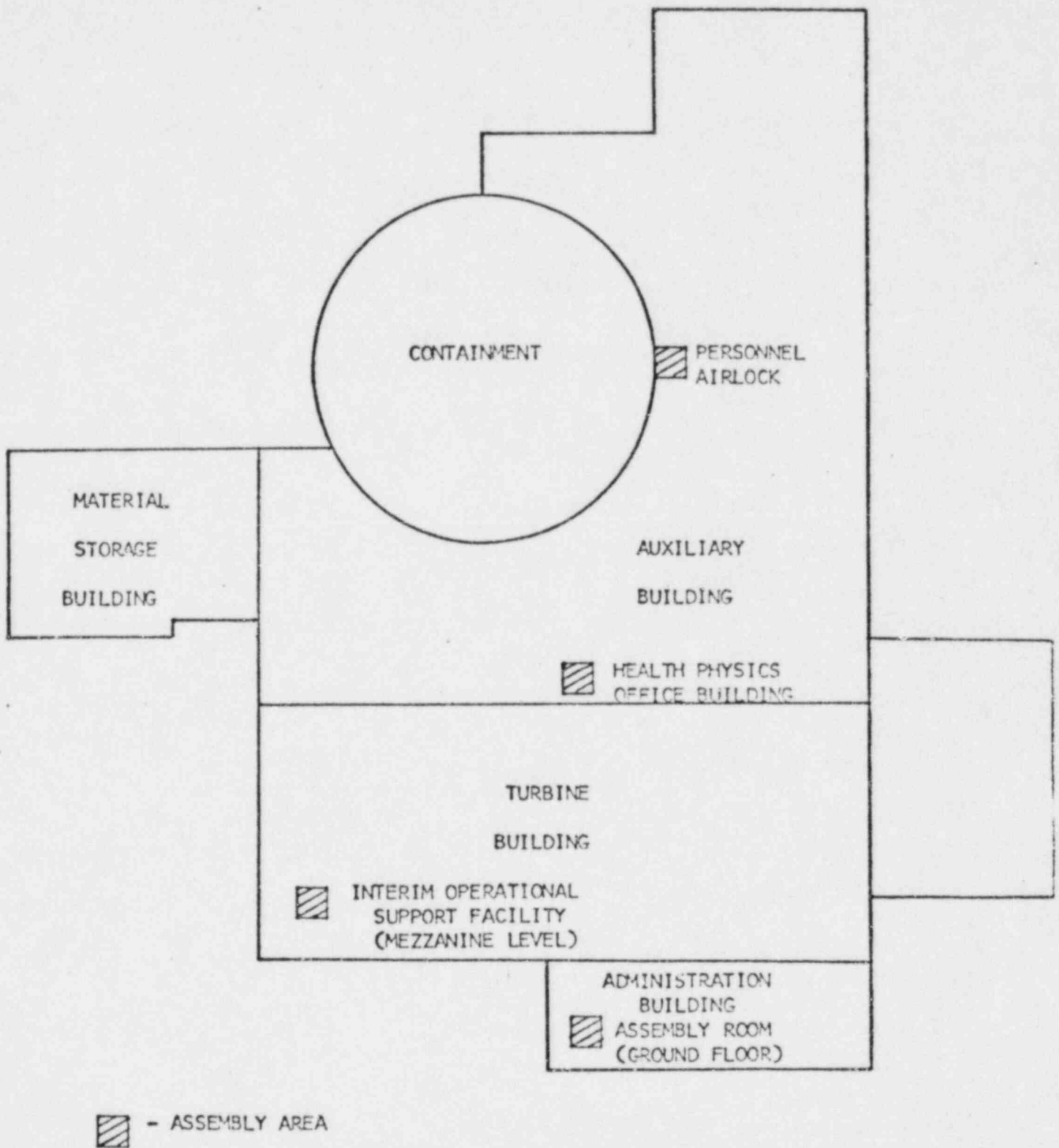


FIGURE 12.9-1 EMERGENCY ASSEMBLY AREAS

ATTACHMENT TO FIGURE 12.9-1
EMERGENCY ASSEMBLY AREAS

GROUP	PRIMARY	ALTERNATE	COORDINATOR
Fire Brigade } Fire Team }	Maintenance Locker Room Admin. Building Lobby	Administration Building Lobby Security Building	Fire Brigade Leader* Fire Team Leader*
	if notified of fire		
Radiation Emergency Team	Radiation Protection Office	Radiological Analysis Facility	Radiological Protection Director
Maintenance, I & C Personnel	Turb. Bldg. Construction Office (Mezzanine Level)	Assembly Room	Support Activities Director
Standby Support Personnel			
Clean Area	Assembly Room	-----	Senior Staff Member Present
Controlled Area	Radiation Protection Office	Radiological Analysis Facility	Radiological Protection Director
Containment	Personnel Airlock	Emergency Airlock	Radiation Emergency Team Member
Technical Support Center Staff	Assembly Room	-----	Technical Support Center Coordinator

Defined in ACD 14.1

KEWAUNEE NUCLEAR POWER PLANT

ADMINISTRATIVE CONTROL DIRECTIVE

NO. ACD 12.10

TITLE Occupational Injuries

DATE MAR 31 1981 PAGE 1 OF 4

REVIEWED BY

AJ Rweje

APPROVED BY

DJK

1.0 PURPOSE

The purpose of this ACD is to describe the administrative procedures to be utilized in case of injury to personnel at the Kewaunee Nuclear Plant. The ACD supplements section 10.60 of the WPS Personnel Manual.

2.0 APPLICABILITY

2.1 This ACD applies to all injuries to personnel at the Kewaunee Nuclear Plant.

3.0 DEFINITIONS

3.1 Occupational Injury - a personnel injury (non-radiological or involving radiation/containment) or excessive personnel exposure.

3.2 Minor Injury - A personnel injury requiring first aid attention only (minor cuts, abrasions, punctures, etc.).

3.3 Medical Attention Injury - A personnel injury requiring medical attention by a licensed physician (cuts requiring sutures, foreign particles in eye, possible fractures, etc.).

3.4 Major Injury - A personnel injury where hospitalization is probably required.

3.5 First Aid Room - A plant area (Room 143) where a stock of first aid supplies and emergency equipment is maintained.

3.6 Emergency Vehicle - A plant vehicle containing certain emergency equipment that is used to transport injured personnel.

4.0 RESPONSIBILITIES

4.1 Each individual working at the Kewaunee Plant is responsible for immediately reporting an on-the-job injury and obtaining first aid treatment as required.

4.2 The Health Physics Group will normally provide assistance per WPS Safety Manual, HP-RET-9 - Ingestion or Inhalation of Radioactivity, HP-RET-13 - Abnormal Dosimetry, HP-RET-14 - Personnel Decontamination, and HP-RET-20- Occupational Injuries.

KEWAUNEE NUCLEAR POWER PLANT

TITLE

Occupational Injuries

ADMINISTRATIVE CONTROL DIRECTIVE

DATE MAR 31 1961

PAGE 2 OF

- 4.3 The Security Force will provide drivers for the emergency vehicle if requested.
- 4.4 The Plant Manager will maintain agreements with off-site personnel to provide medical and hospitalization support.
- 4.5 The Shift Supervisor is responsible for determining if the injury should be classified as a Significant Event and/or an Unusual Event per ACD 4.14 and ACD 12.2 respectively.

5.0 REQUIRMENTS5.1 Minor Injury - Clean Area

- 5.1.1 The injured employee should report to the First Aid Room for treatment.
- 5.1.2 The injured employee and his supervisor should complete Report of Minor Injury Form 115-12 in accordance with Section 10.60 of the Personnel Manual.
- 5.1.3 The person administering First Aid Should record the necessary information in the First Aid Room Log.

5.2 Minor Injury - Controlled Area

- 5.2.1 The injured employee should report to the First Aid Room for treatment. The wound will be checked for possible radioactive contamination.
- 5.2.2 The injured employee and his supervisor should complete Report of Minor Injury Form 115-12 in accordance with Section 10.60 of the Personnel Manual.
- 5.2.3 The person administering First Aid should record the necessary information in the First Aid Room Log.
- 5.2.4 If the wound is of such a nature that contamination could be introduced, the person may be restricted from further work in the Controlled Area until the wound has healed.

5.3 Medical Attention Injury

- 5.3.1 Injuries requiring medical attention will be referred to either the Two Rivers Hospital or the Eye Clinic of Manitowoc (during normal working hours only), or the Two Rivers Hospital.
- 5.3.2 First Aid treatment will be administered in accordance with Section 5.2.

KEWAUNEE NUCLEAR POWER PLANT

ADMINISTRATIVE CONTROL DIRECTIVE

NO.

ACD 12.10

TITLE

Occupational Injuries

DATE MAR 31 1981

PAGE 3 OF 4

- 5.3.3 The person administering first aid will contact the Plant Security/Administrative Supervisor (dayshift) or Shift Supervisor (off-shift) to provide a driver for the Emergency Vehicle.
- 5.3.4 The person making the referral will contact the appropriate facility providing the information from medical attention injury information checklist and contact the employee's supervisor. (See Page 4 of ACD 12.10).
- 5.3.5 If the injured person is a WPS Employee, the person making the referral should complete an "Order on Doctor" form (303-12). The original should accompany the injured person to the Hospital or Clinic. A copy should be sent to the Plant Security/Administrative Supervisor.
- 5.3.6 If the injured person is a contractor employee, the "Order on Doctor" form should be sent to the Plant Manager for information purposes. A copy should not accompany the injured person.
- 5.3.7 The Plant Security/Administrative Supervisor will initiate an Employer's First Report of Injury or Disease Form WC-12 in accordance with Section 10.60 of the Personnel Manual if the injured person is a WPS Employee.
- 5.3.8 If it appears the injury could result in a lost time accident, the injured person's supervisor should contact the WPS Safety Department.
- 5.4 Major Injury
- 5.4.1 Any person observing or discovering a possible Major Injury should contact the Shift Supervisor and Health Physics Supervisor immediately. Do not attempt to move the victim unless located in a high radiation or airborne activity area or imminent danger of further injury exists.
- 5.4.2 Major injuries will be handled in a similar manner as Medical Attention Injuries. See 5.3 above.

MEDICAL ATTENTION INJURY (Injury Requiring First Aid Attention by a
licensed physician)

INFORMATION ONLY

INJURED INDIVIDUAL:

EXTENT OF CONTAMINATION:

NATURE OF INJURY:

CONDITION OF PATIENT:

EXPECTED TIME OF ARRIVAL AND MEANS OF TRANSPORTATION:

ORDER ON DOCTOR FORM COMPLETED *

- * WPS EMPLOYEE - Original should accompany injured person to hospital or clinic
- * CONTRACTOR EMPLOYEE - Original should be sent to Plant Manager

KEWAUNEE NUCLEAR POWER PLANT

ADMINISTRATIVE CONTROL DIRECTIVE

NO. ACD 12.11

TITLE Radiation Emergency

DATE MAR 31 1981 PAGE 1 OF 2

REVIEWED BY

A. J. Rupp

APPROVED BY

D. J. S.

1.0 PURPOSE

To define actions of plant personnel during a radiation emergency.

2.0 APPLICABILITY

This ACD applies to all personnel within the Protected Area.

3.0 DEFINITIONS

3.1 A radiation emergency could consist of one or more of the following conditions:

3.1.1 An uncontained spill of radioactive liquid.

3.1.2 An increase on building air activity monitors which cannot be attributed to a change in process conditions.

3.1.3 An increase in direct radiation as detected by the plant area monitors which cannot be attributed to a change in process conditions.

3.1.4 An increase in plant liquid or gaseous activity monitors which cannot be attributed to a change in plant conditions.

3.1.5 An unexpected instance of personnel contamination or exposure.

3.1.6 A change in process conditions which threatens to create one of the above situations.

4.0 RESPONSIBILITIES

4.1 All plant personnel are responsible for informing the Shift Supervisor or Health Physics Supervisor when they suspect a radiation emergency occurred.

4.2 The Health Physics Group and/or Shift Supervisor is responsible for determining when a radiation emergency has occurred.

4.3 The Shift Supervisor is responsible for determining if a radiation emergency should be classified as an Unusual Event, Alert, Site Emergency, or General Emergency per ACD 12.2, Emergency Classification.

KEWAUNEE NUCLEAR POWER PLANT
ADMINISTRATIVE CONTROL DIRECTIVE

NO. ACD 12.11

TITLE
Radiation Emergency

DATE MAR 31 1981 PAGE 2 OF 2

5.0 REQUIREMENTS

- 5.1 When a local radiation alarm sounds, personnel will leave the area immediately and report the alarm to the Health Physics Office and Shift Supervisor. DO NOT ATTEMPT TO SILENCE OR ADJUST THE LOCAL ALARM.
- 5.2 The Shift Supervisor will contact the Health Physics Supervisor or Radiological Protection Director (RPD) when he is informed or suspects a radiation emergency has occurred and inform the Gatehouse of the type and extent of the emergency.
- 5.3 The Health Physics Supervisor or the Radiological Protection Director will investigate the extent and activity levels involved in the emergency and make recommendations to the Emergency Director whether the incident should be considered an emergency. This investigation may require calling in members of the Radiation Emergency Team on off-shifts.
- 5.4 If the Shift Supervisor determines the emergency should be considered an Unusual Event (ACD 12.3), Alert (ACD 12.4), Site Emergency (ACD 12.5) or General Emergency (ACD 12.6), he will proceed to perform the requirements of the respective ACD.