



GE Lighting

General Electric Company  
Nela Park, Cleveland, OH 44112

February 28, 1989

John R. Madera  
Materials Licensing Section  
U.S.N.R.C., Region III  
799 Roosevelt Road  
Glen Ellyn, IL 60137

Re: Control Number 86586, Additional Information

Dear Sir:

This letter contains additional information concerning our closure of a number of our Distribution Centers as addressed in our letter of December 6, 1988. You requested specific information for the closure of each facility in your letter of January 4, 1989. The additional information provided with this letter concerns three of our locations: the Milwaukee, Philadelphia, and St. Louis Distribution Centers.

I have attached drawings of the three facilities with the areas where the licensed lamps were stored marked on each drawing. Also included is a listing of survey readings at each facility. In all cases the survey was conducted by myself using an Eberline ESP-2 survey meter equipped with an HP-270 beta/gamma probe. The surveys were conducted with the beta shield in the "open" position. The meter and probe had just recently been purchased and were calibrated by the manufacturer on February 6, 1989. Also attached is a copy of the certificate of calibration from the supplier.

At both the Milwaukee and St. Louis Distribution Centers, all lamps, both those covered under our license and others not containing licensed material, had been removed from the facilities. At the Philadelphia D.C, only those lamps not requiring licensing remained on-site. The licensed lamps at all three facilities had either been shipped to customers, or transferred to another licensed location (Milwaukee and St. Louis to Chicago, Philadelphia to Hagarstown, MD).

I hope this information is sufficient to allow release of these three facilities. Should you have any questions concerning the testing conducted or the results, please contact me at (216) 266-3349.

*A. M. Zielinski*  
A. M. Zielinski

Lighting Environmental Operation

Attachments

xc: P. Norse #4503  
A.L. Kaplan #1350  
NRC - original + 1 copy  
File: 86586

9303220289 920520  
PDR FOIA  
FRANSC92-97 PDR

CONTROL NO. 8705 8

FEE NOT REQUIRED

MAR 6 1989

RECEIVED

MAR 06 1989

REGION III

*3B* *adelle - up* *CP 3/14/89* *2/22/89* *58* *C/60*

Milwaukee Distribution Center

Survey conducted on February 21, 1989

BIAX storage area (grid C3)	< 0.01 mR/hr 0.02 0.01 < 0.01
Circlite storage area (grid C2.5)	0.01 0.02 0.01
"Open Pack" storage area (Saratoga)	0.02 < 0.01 < 0.01 0.01
Background areas (no licensed lamps)	0.02 < 0.01

Philadelphia Distribution Center

Survey conducted on February 22, 1989

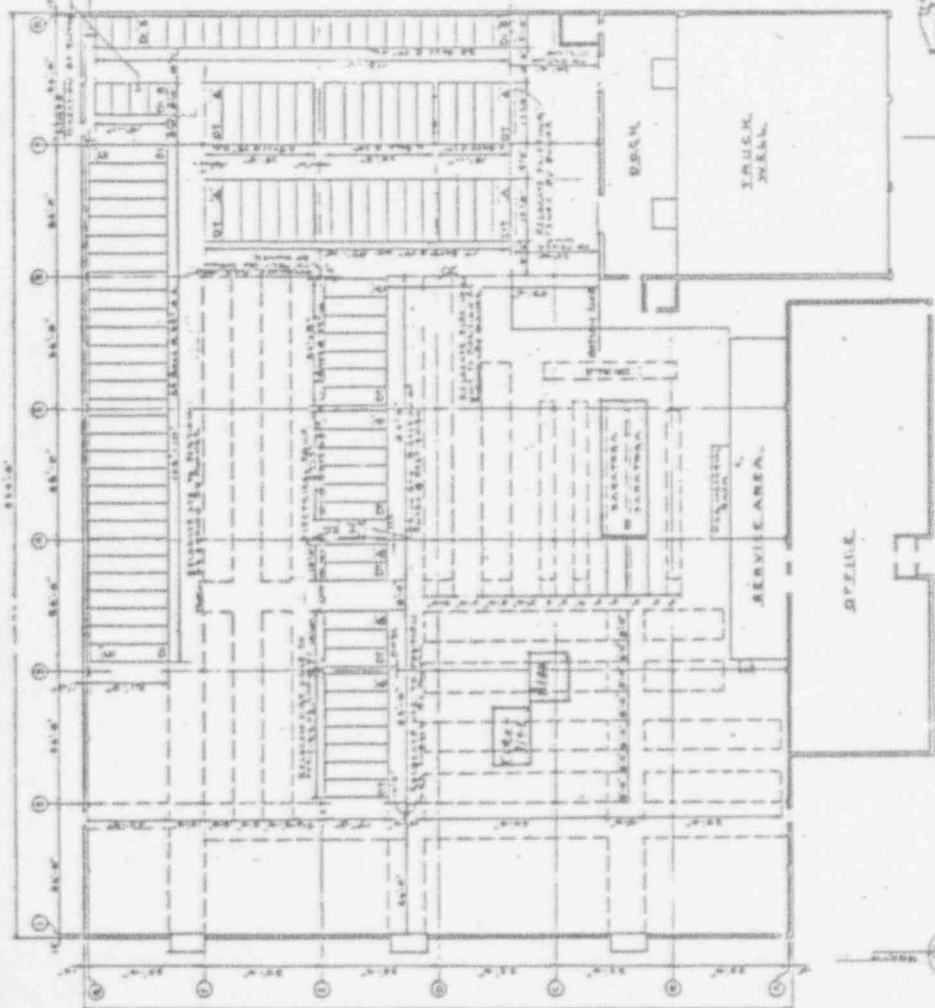
BIAX storage area (grid B15)	< 0.01 mR/hr < 0.01 0.02 0.02
Circlite storage area (grid B15)	0.02 0.01 0.02
"Open Pack" storage area (grid D5)	0.02 0.03 0.02
Returned lamp storage (grid M10)	< 0.01 0.02
Background areas (no licensed lamps)	< 0.01 < 0.01 0.02

St. Louis Distribution Center

Survey conducted on February 23, 1989

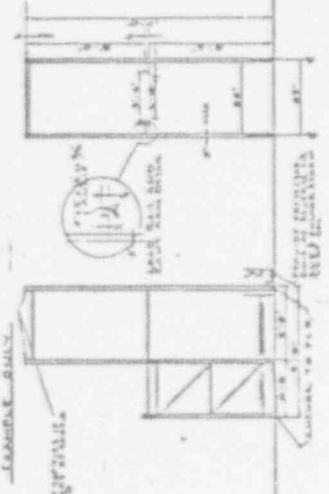
BIAX/Circlite storage area (grid K6)	< 0.01 mR/hr
	0.02
	0.01
	< 0.01
	< 0.01
	0.01
Background areas (no licensed lamps)	0.02
	0.02
	< 0.01
	0.02
	< 0.01
	0.01
	< 0.01

CONTRACT NO. 8705 8

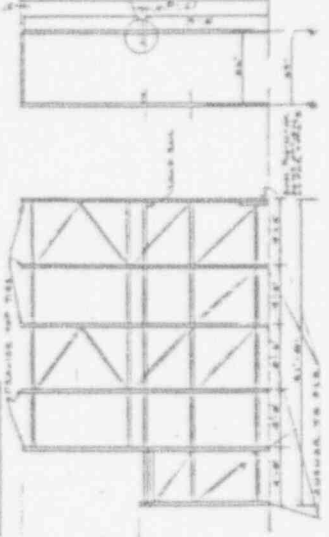


WAREHOUSE FLOOR PLAN  
STORAGE RACK LAYOUT (PARTIAL)  
SCALE: 1/8" = 1'-0"

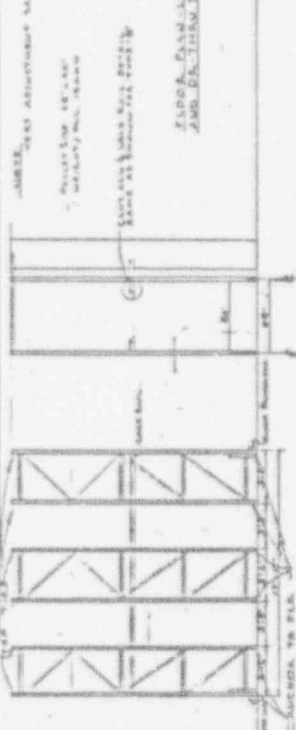
NOTES:  
1. WAREHOUSE TO BE 30'-0" HIGH.  
2. CONSTRUCTION TO BE BY BENTON & BOWLE



TYPE 'B' - 3 DEEP DRUM STORAGE RACK  
SCALE: 1/8" = 1'-0"



TYPE 'C' - 3 DEEP DRUM STORAGE RACK  
SCALE: 1/8" = 1'-0"



TYPE 'D' - 4 DEEP DRUM STORAGE RACK  
SCALE: 1/8" = 1'-0"

GENERAL ELECTRIC COMPANY ELECTRIC DIVISION DISTRIBUTION SERVICE DEPARTMENT FLOOR PLAN RACK LAYOUT	SR-SK-1
---	---------





EVERLINE INSTRUMENT CORPORATION  
A Subsidiary of  
Thermo Instrument Systems Inc.

SANTA FE, N.M.

CERTIFICATION OF CALIBRATION

Instrument: ESP-2 Serial Number: 744

Detector: HP-270 Serial Number: 706342

Sources\*: Cs-137 S/N EI-120,123,125

Units: mR/h

Calib. Constant\*\*:  $7.09E+07$


Dead Time (Sec)\*\*:  $1.07E-04$

High Voltage (Volts):  $8.97E+02$

OverRange: The ESP-2 Overranged and Read  $3.35E+003$  mR/h  
When Placed in a Calibrated Field Between  $3.00E+003$  and  $4.00E+003$  mR/h

LINEARITY CHECK

FIELD STRENGTH	ESP-2	READING
$2.03E+000$ mR/h	$2.08E+000$ mR/h	
$2.00E+001$ mR/h	$2.00E+001$ mR/h	
$2.00E+002$ mR/h	$1.92E+002$ mR/h	
$2.00E+003$ mR/h	$2.08E+003$ mR/h	

CALIBRATED BY:  DATE: 2/ 6/89  
PROGRAM: ESP-2 Calibration Program V 1.1

- \* Calibration Sources Used Have Calibration Traceable to the National Bureau of Standards.
- \*\* Calibration Constant and Dead Time Calibrated At 20 mR/h and 1 R/h respectively.

CONTROL NO. 8705-8