

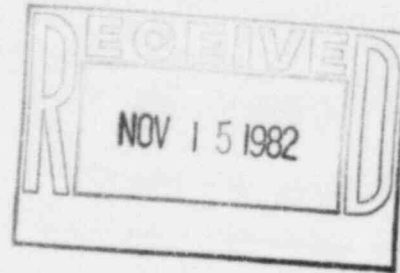


KANSAS GAS AND ELECTRIC COMPANY

GLENN L. KOESTER
VICE PRESIDENT - NUCLEAR

November 12, 1982

Mr. W.C. Seidle, Chief
Reactor Projects Branch 2
U.S. Nuclear Regulatory Commission
Region IV
611 Ryan Plaza Drive, Suite 1000
Arlington, Texas 76011



KMLNRC 82-252
Re: Docket No. STN 50-482
Subj: Potential 10CFR50.55(e) Report - Restricted
Movement of Nonstationary Pipe Supports

Dear Mr. Seidle:

This letter provides an interim report on a potential 10CFR50.55(e) item concerning restricted movement of nonstationary pipe supports. Kansas Gas and Electric Company initially reported this item to Region IV of the Nuclear Regulatory Commission on October 14, 1982.

The pipe support in question is used in small pipe applications, including some safety-related systems. Attachment 1 shows a sketch of the support in question. The support is designed to allow approximately 1/16 inch of movement in two directions and 1/8 inch in the third direction. Movement can be restricted due to the weld crown size of the ASME Code acceptable stanchion fillet weld.

During a recent inspection, it was discovered that several supports had restricted movement due to interference between the stanchion fillet weld and the stationary base assembly. Further investigation revealed 608 installed supports with restricted movement. Nonconformance Report 1SN4927PW was initiated to document the discrepancy and track its resolution.

The Architect/Engineer (A/E) initially indicated that movement within the support assembly is desirable, but is not required, and that the restricted movement has no significant safety implications. However, the A/E later determined that each support would have to be evaluated individually before any categorical statement should be made concerning the safety implications of the restricted movement. Therefore, Kansas Gas and Electric Company made the determination that restricted movement constituted a potential 10CFR50.55(e) reportable event.

IE 27

8211180178 821112
PDR ADOCK 05000482
S PDR

Mr. W.C. Seidle
KMLNRC 82-252

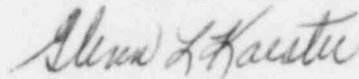
-2-

November 12, 1982

The A/E is in the process of evaluating each of the 608 supports to determine whether or not any of these supports require full movement. None of the supports evaluated so far have required any such movement. To eliminate this concern in the future and to aid in the ease of installation, the A/E had modified the design for future supports as illustrated in Attachment 2.

The resolution of this concern and the determination of its safety significance will take several months. The status of this evaluation will be reported to you on or before February 16, 1983. In the interim, please direct any questions on this subject to me or to Mr. Otto Maynard of my staff.

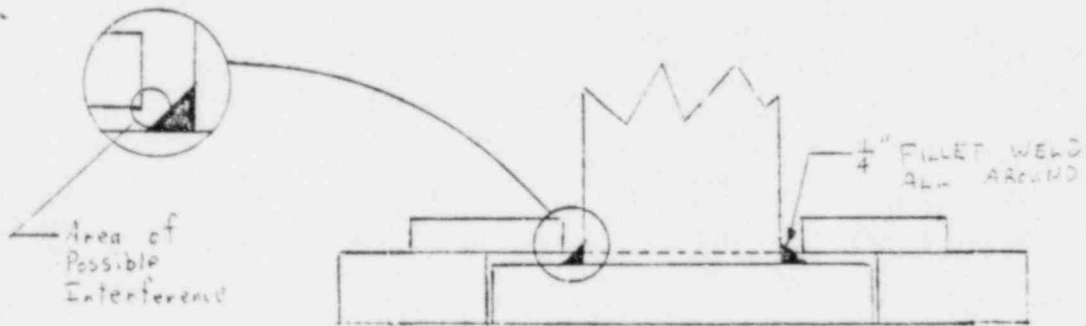
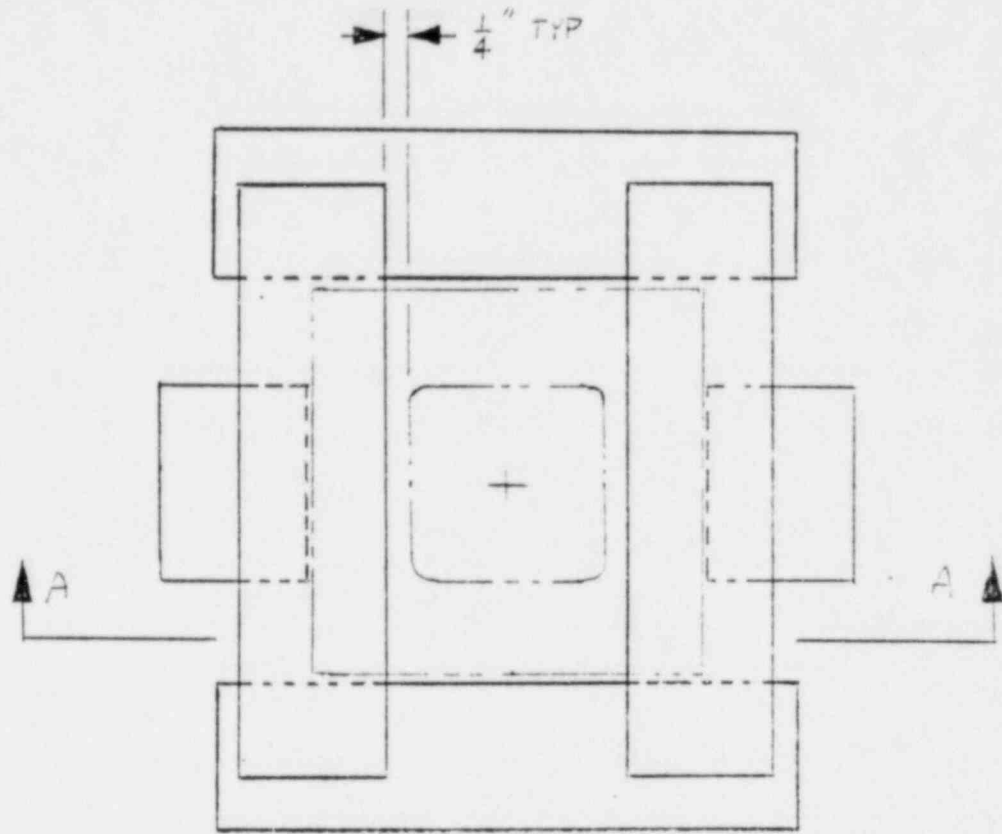
Yours very truly,



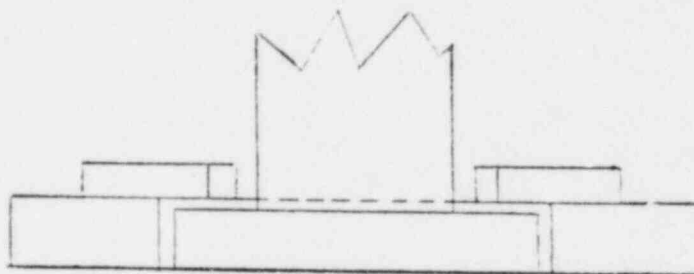
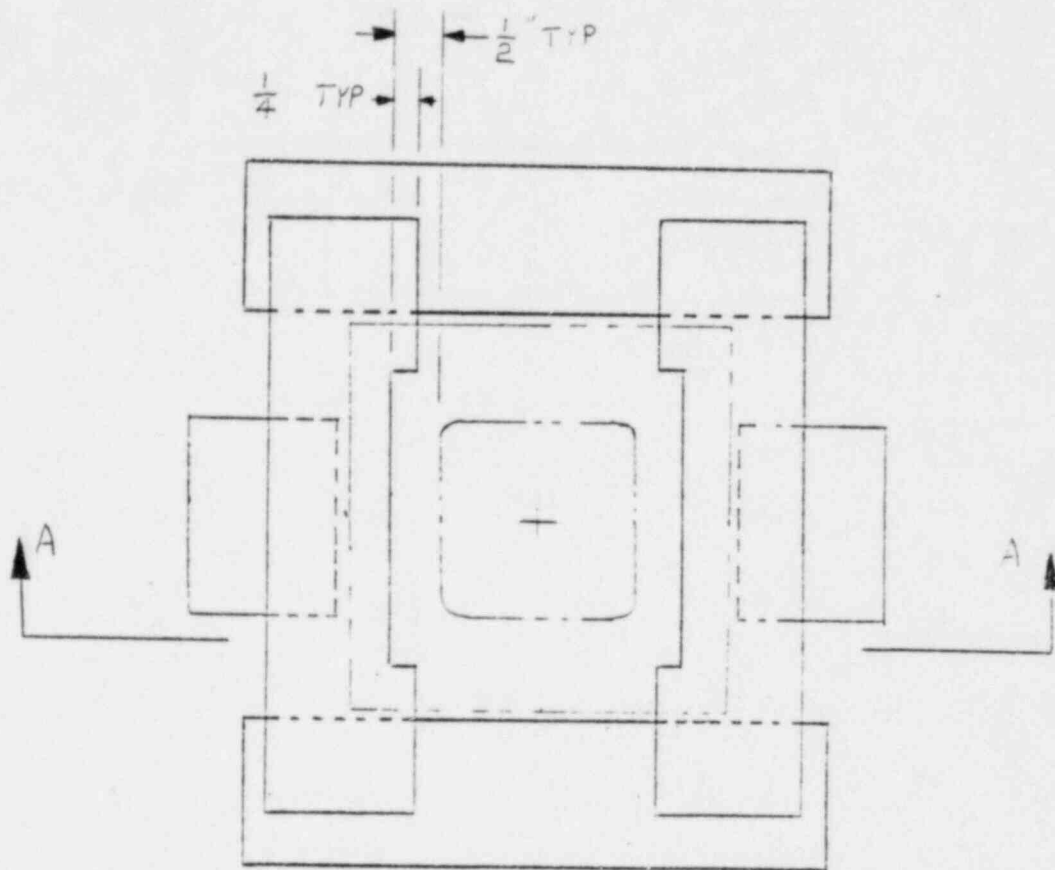
Glenn L. Koester
Vice President - Nuclear

GLK:bb
Attach

cc: Messrs. TVandel/SSchum
Attachment



SECTION A-A



SECTION A-A