

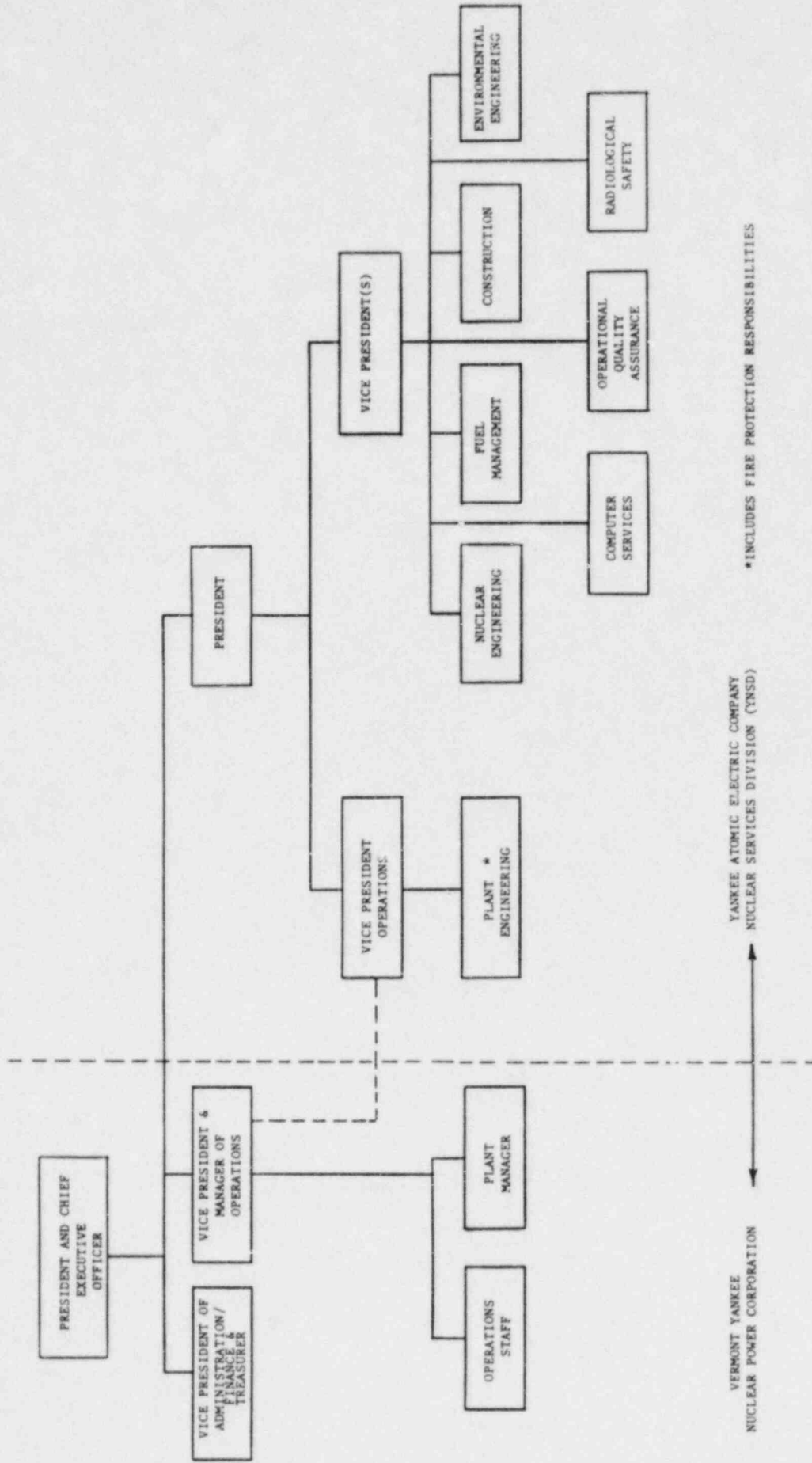
B209300154 B20927
PDR ADOCK 05000271
PDR

VYNPS

5. The Chemistry and Health Physics Supervisor or Plant Health Physicist shall meet or exceed the qualifications of Regulatory Guide 1.8, Revision 1 (September 1975).
 6. The Shift Technical Advisor shall have a bachelor's degree or equivalent in a scientific or engineering discipline with specific training in plant design, and response and analysis of the plant for transients and accidents.
- E. A Fire Brigade of at least 5 members shall be maintained on-site at all times. #This excludes 2 members of the minimum shift crew necessary for safe shutdown of the plant and any personnel required for other essential functions during a fire emergency.

#Fire Brigade composition may be less than the minimum requirements for a period of time not to exceed 2 hours in order to accommodate unexpected absence of Fire Brigade members provided immediate action is taken to restore the Fire Brigade to within the minimum requirements.

FIGURE 4.1.1
OFFSITE SUPPORT ORGANIZATION



*INCLUDES FIRE PROTECTION RESPONSIBILITIES

VERMONT YANKEE
NUCLEAR POWER CORPORATION

YANKEE ATOMIC ELECTRIC COMPANY
NUCLEAR SERVICES DIVISION (YNSD)