



Northern Indiana Public Service Company

Nuclear Staff
RR #3, Box 501
Chesterton, IN 46304
November 3, 1978

BAILLY GENERATING STATION N-1

Mr. Ronald Ballard
Environmental Projects Branch No. 1
Directorate of Licensing
U.S. Nuclear Regulatory Commission
Washington, D.C. 20545

RE: NORTHERN INDIANA PUBLIC SERVICE COMPANY
BAILLY GENERATING STATION NUCLEAR 1
DOCKET 50-367

Dear Mr. Ballard:

Enclosed herewith are ten (10) copies of the following:

1. Well charts for 10/18/78 - 10/25/78
2. Pond levels for 10/26/78
3. Bailly Wells Without Recorders for 10/25/78
4. Pneumatic Pressure Transducers for 10/25/78
5. Water Meter Readings for 10/19/78, 10/20/78
and 10/23/78
6. Dewatering Equipment Installation for 10/18/78 - 10/25/78

Sincerely,

A handwritten signature in cursive script, appearing to read "R. J. Bohn".

R. J. Bohn
Manager, Nuclear Staff

MD/me

Enclosures

File: Ground Water Observation Monitoring Wells

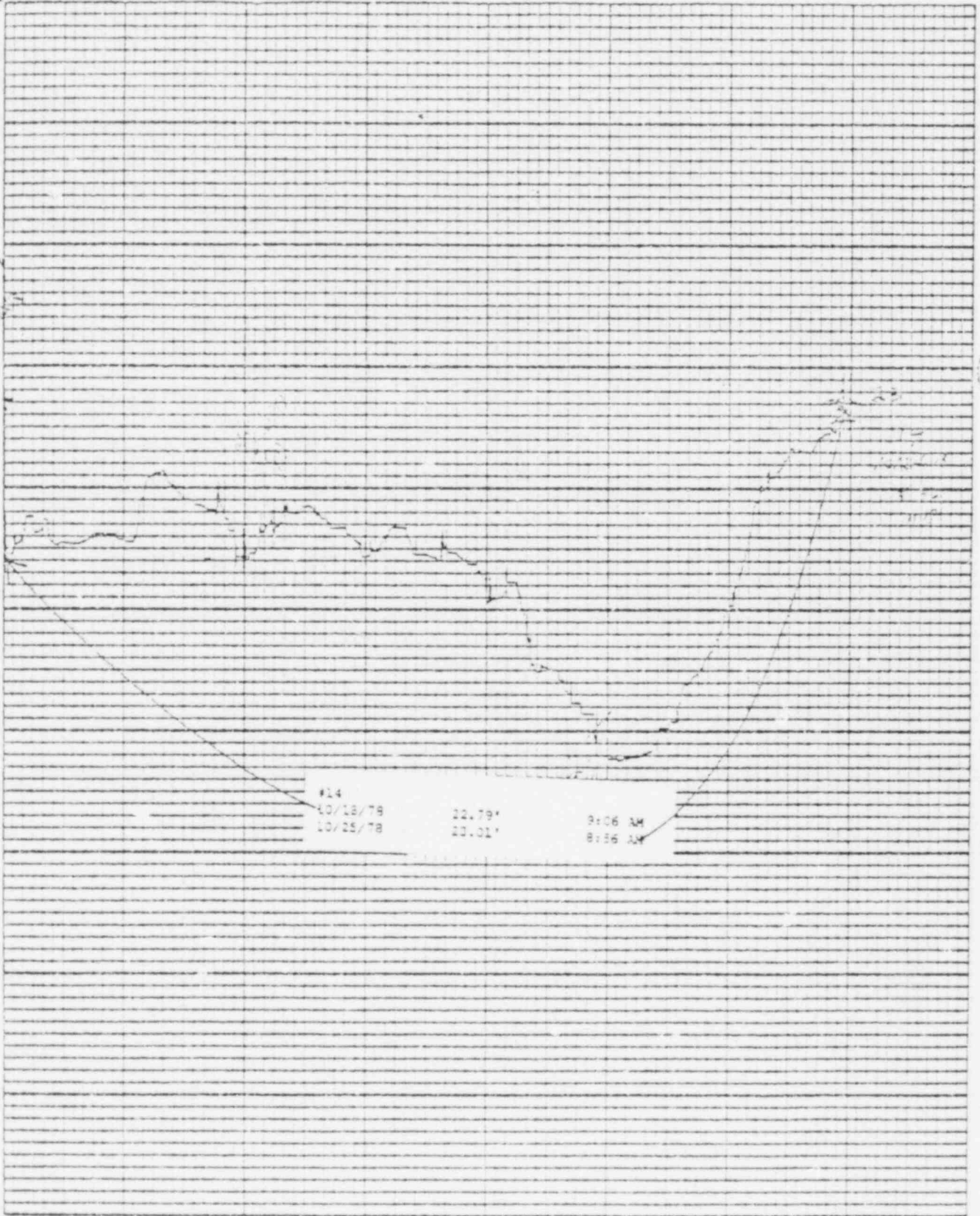
7811142208
P,

DOOK
ES
11/03

RECORDED

Leupold & Stevens, Inc., Beaverton, Ohio

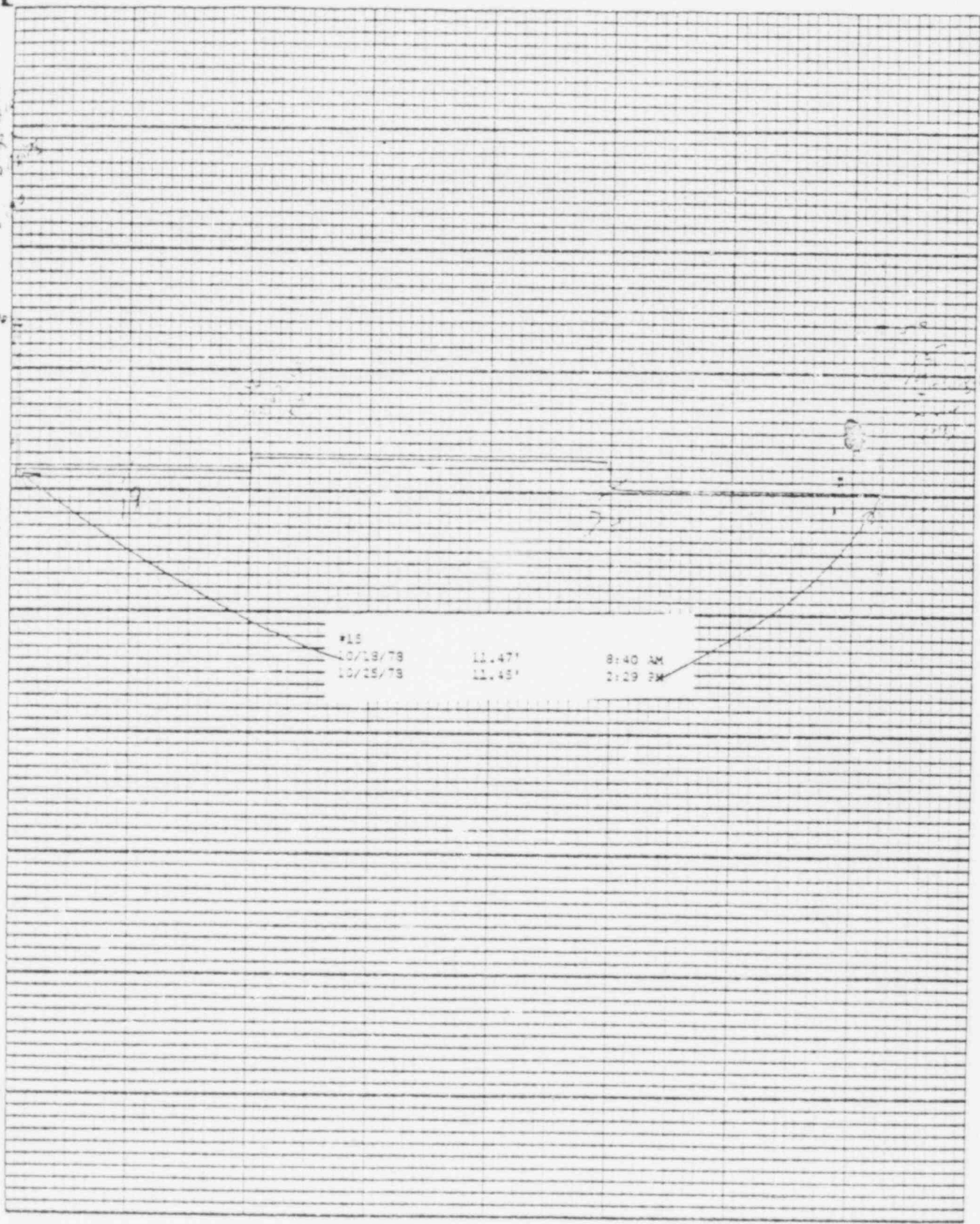
58 10 20 30 40 50 60 70 80 90 100



Leopold & Stevens, Inc., Heaver, Ion, Ore.

60 70 80 90 100

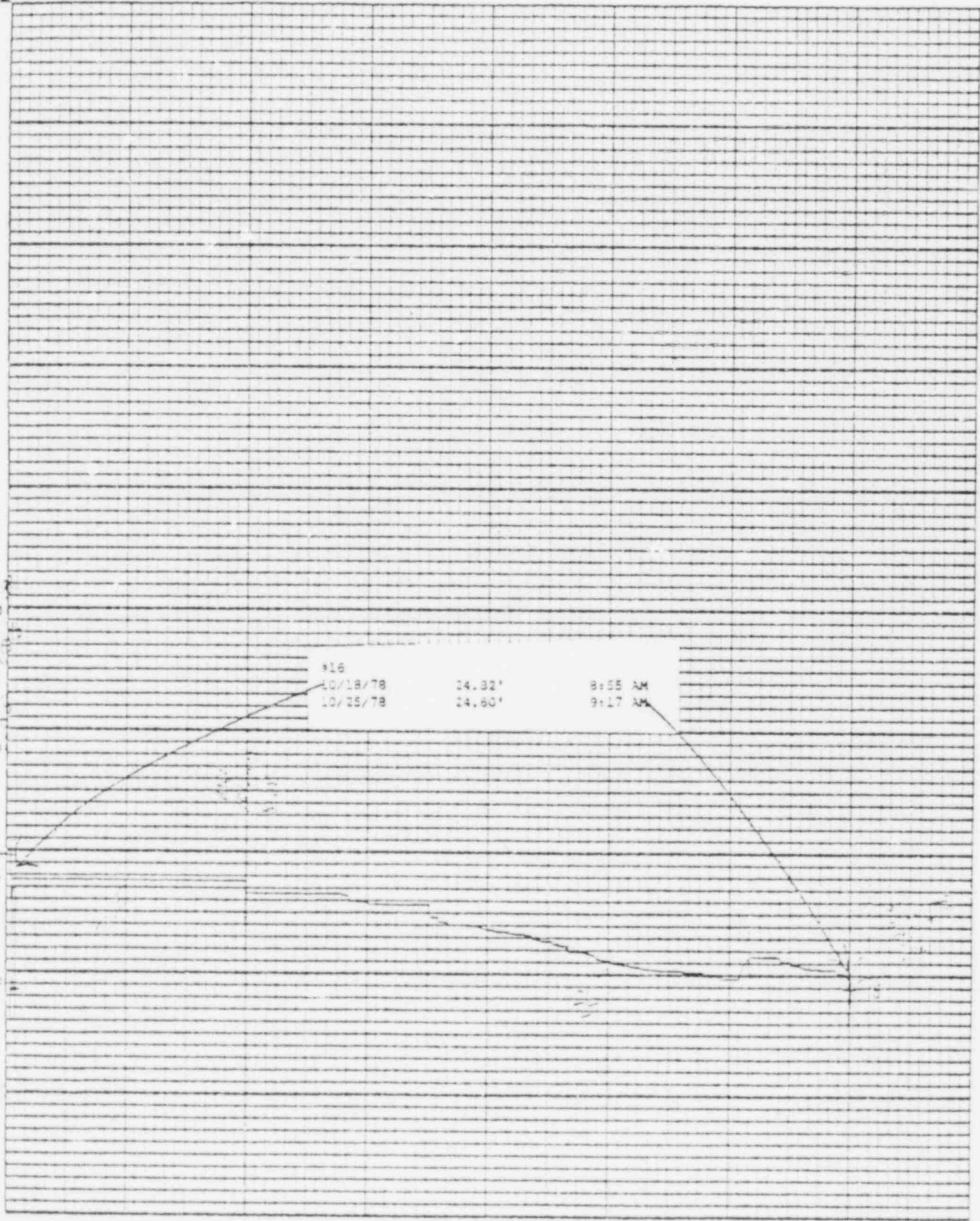
20



#10		
10/18/78	11.47'	0.40 XX
10/15/78	11.45'	0.39 XX

Printed by U.S.A.

Franklin & Stearns Log, Beaverton, Ore.



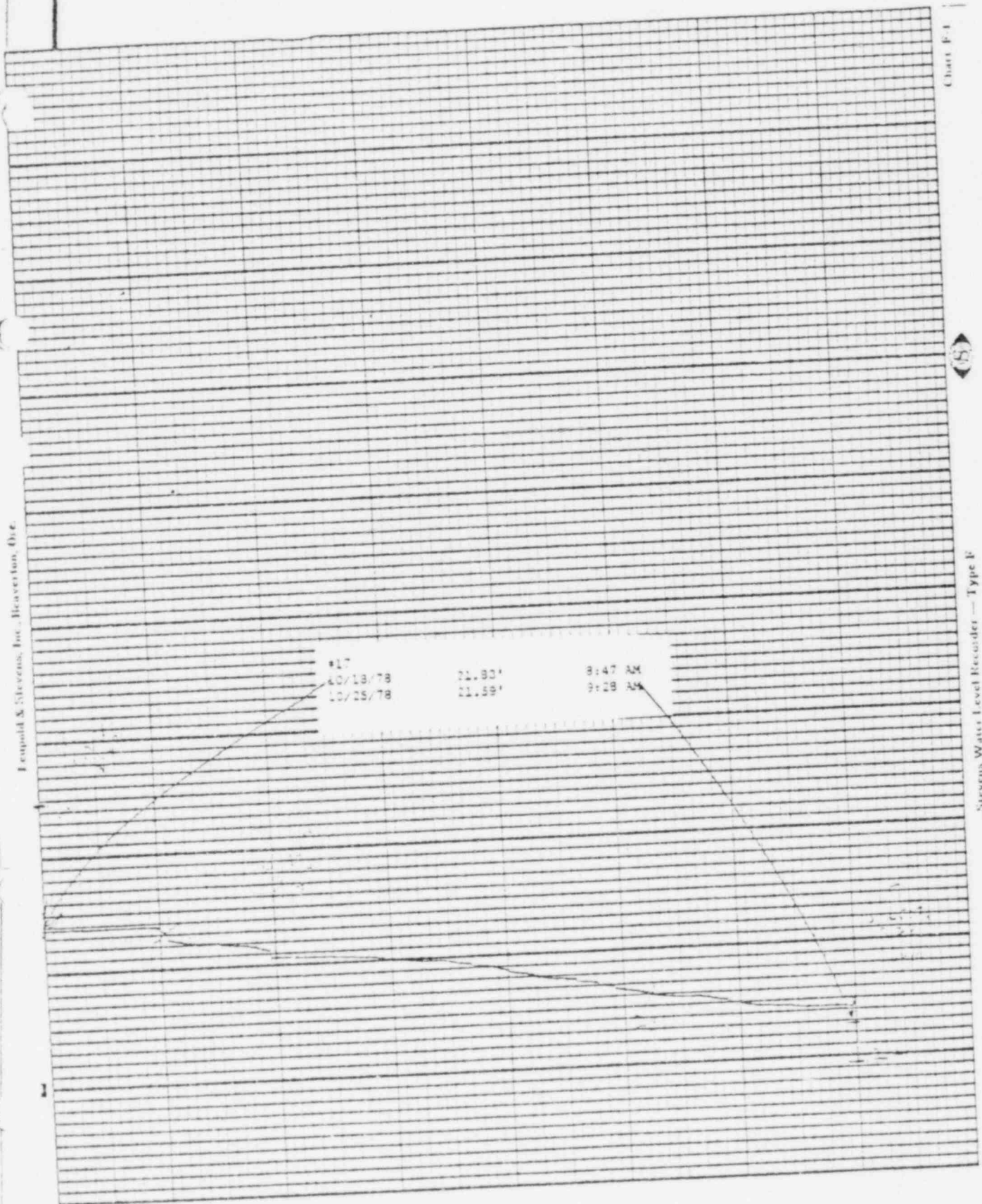
Printed in U.K.A

Leopold & Stevens, Inc., Beaverston, Ohio

Chart F-1

(5)

Stevens Water Level Recorder — Type F

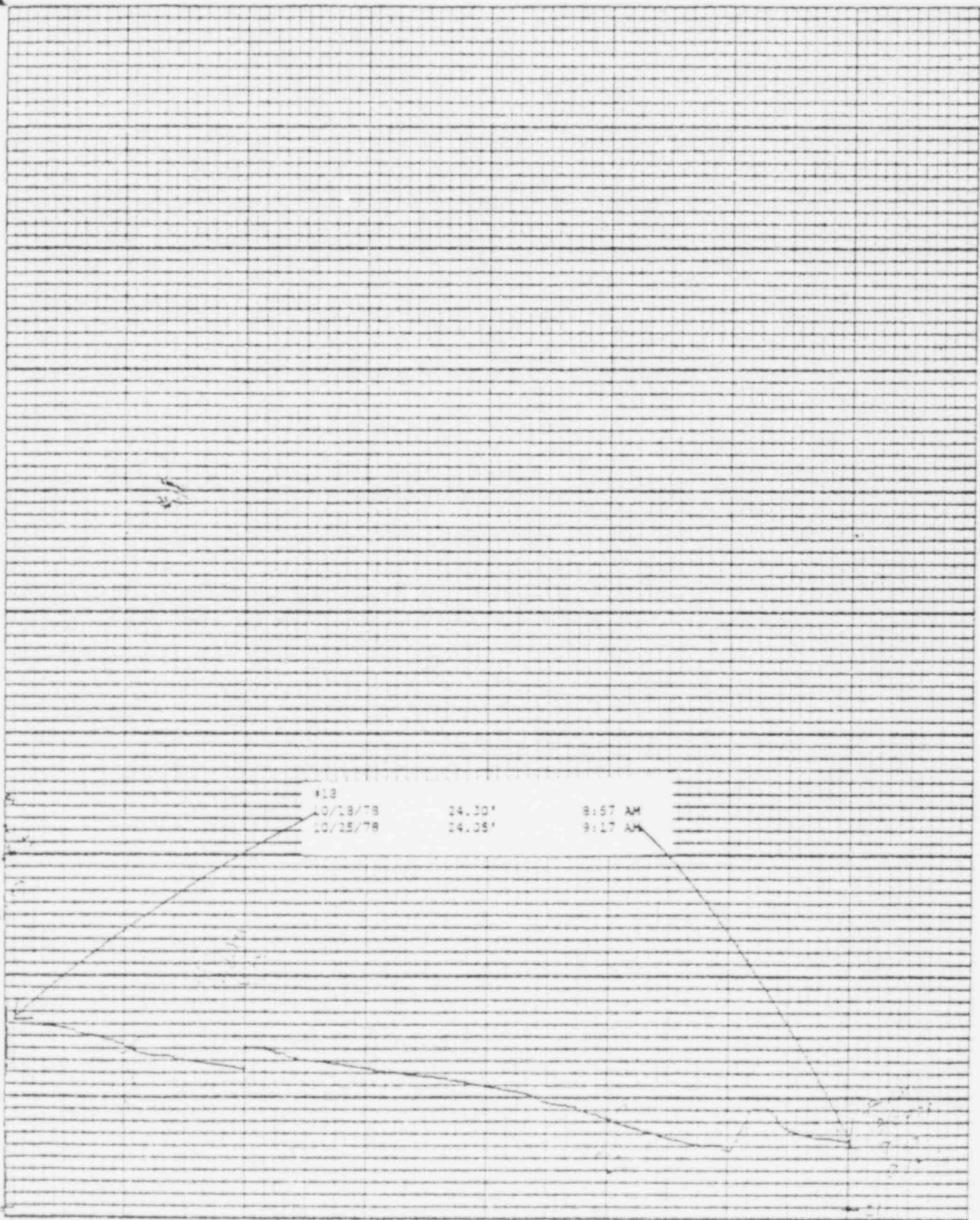


Printed on 12 x 18 in. paper

Lempick & Stevens Inc., Beaverlton, Ont.

2

1



Printed in U.S.A.

Leopold & Stevens, Inc., Beaverton, Ore.

100
50
0
50
100

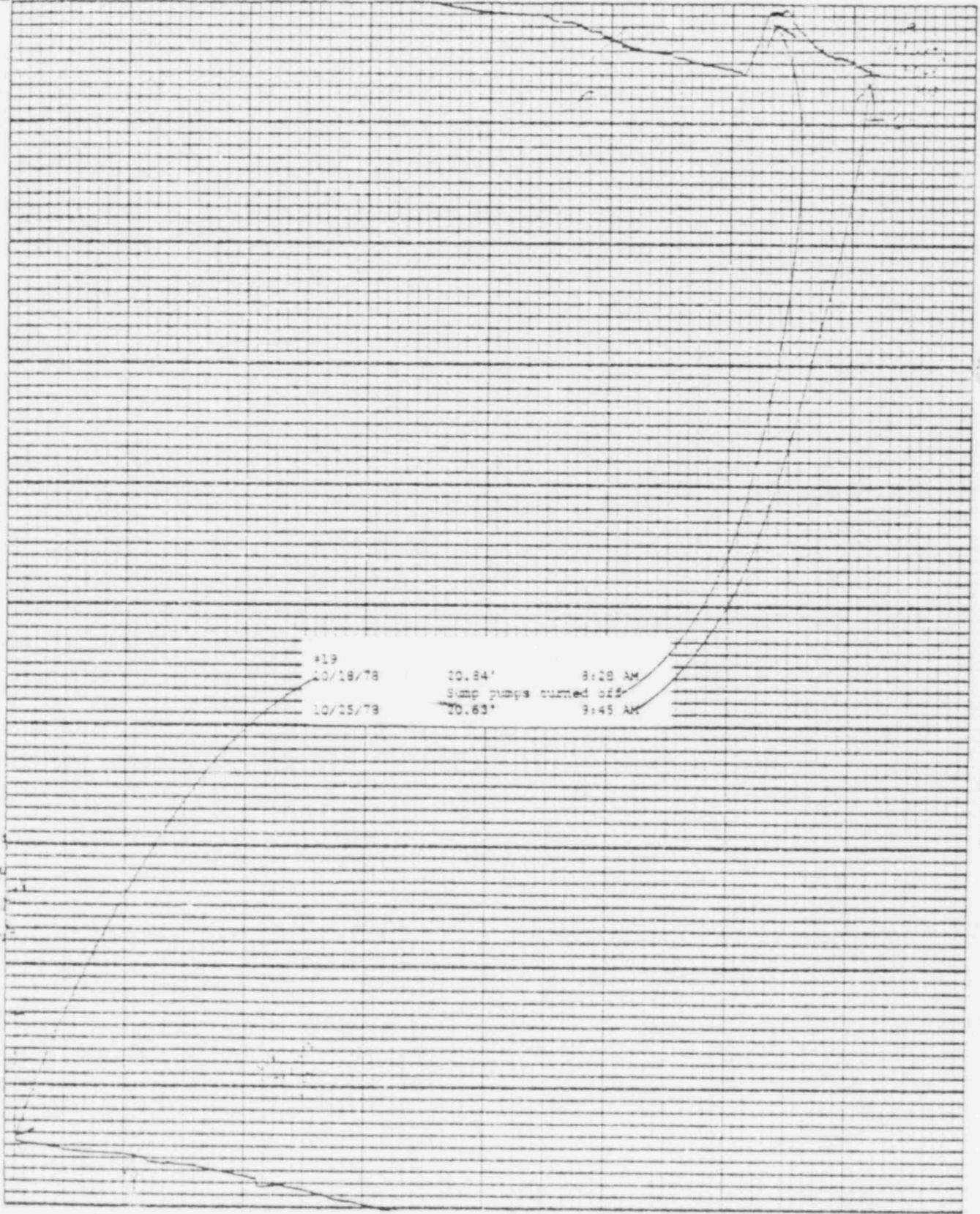
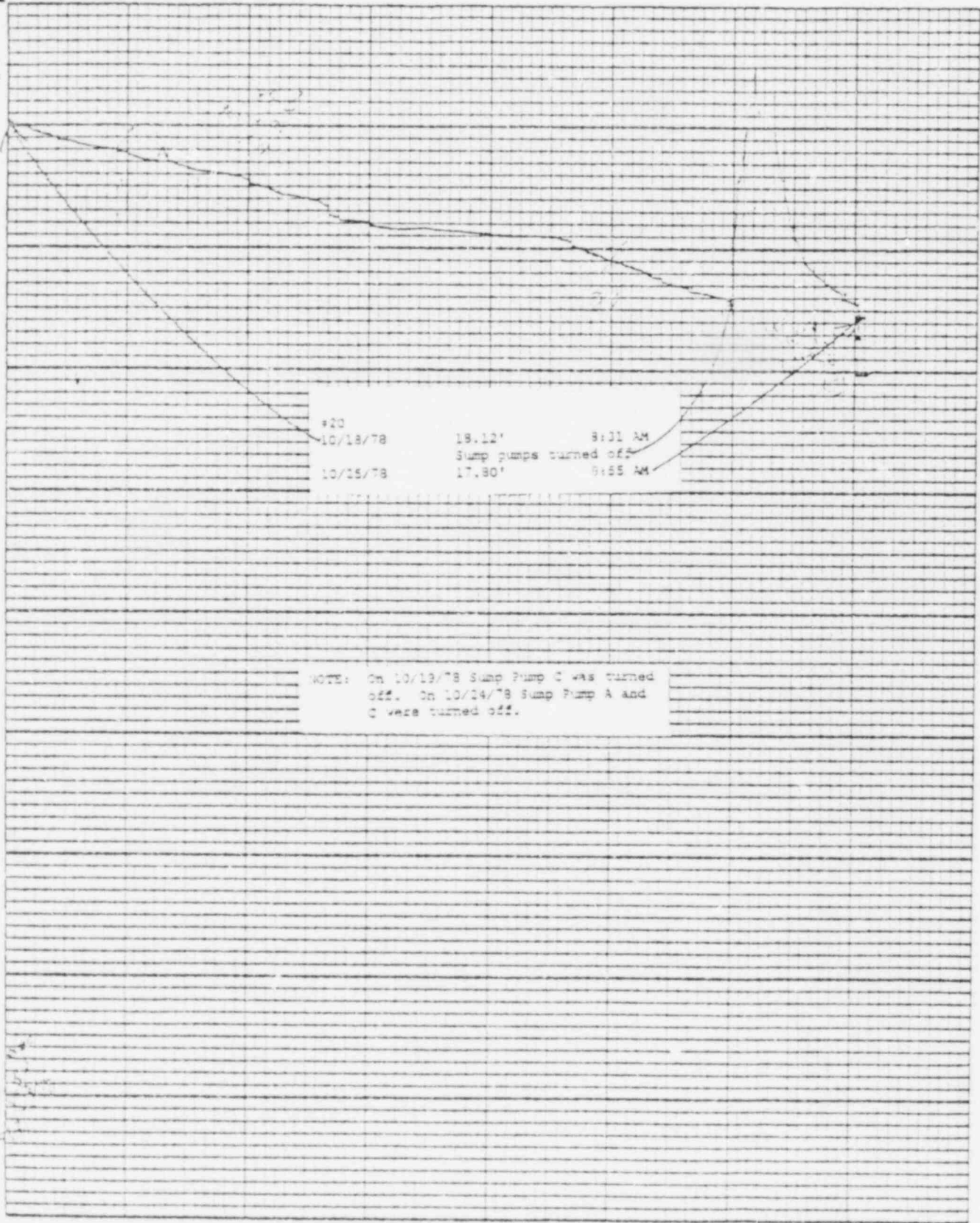


Chart F-1

Stevens Water Level Recorder - Type B

Leopold & Stevens, Inc., Beaverton, Ore.

Project No. 1038

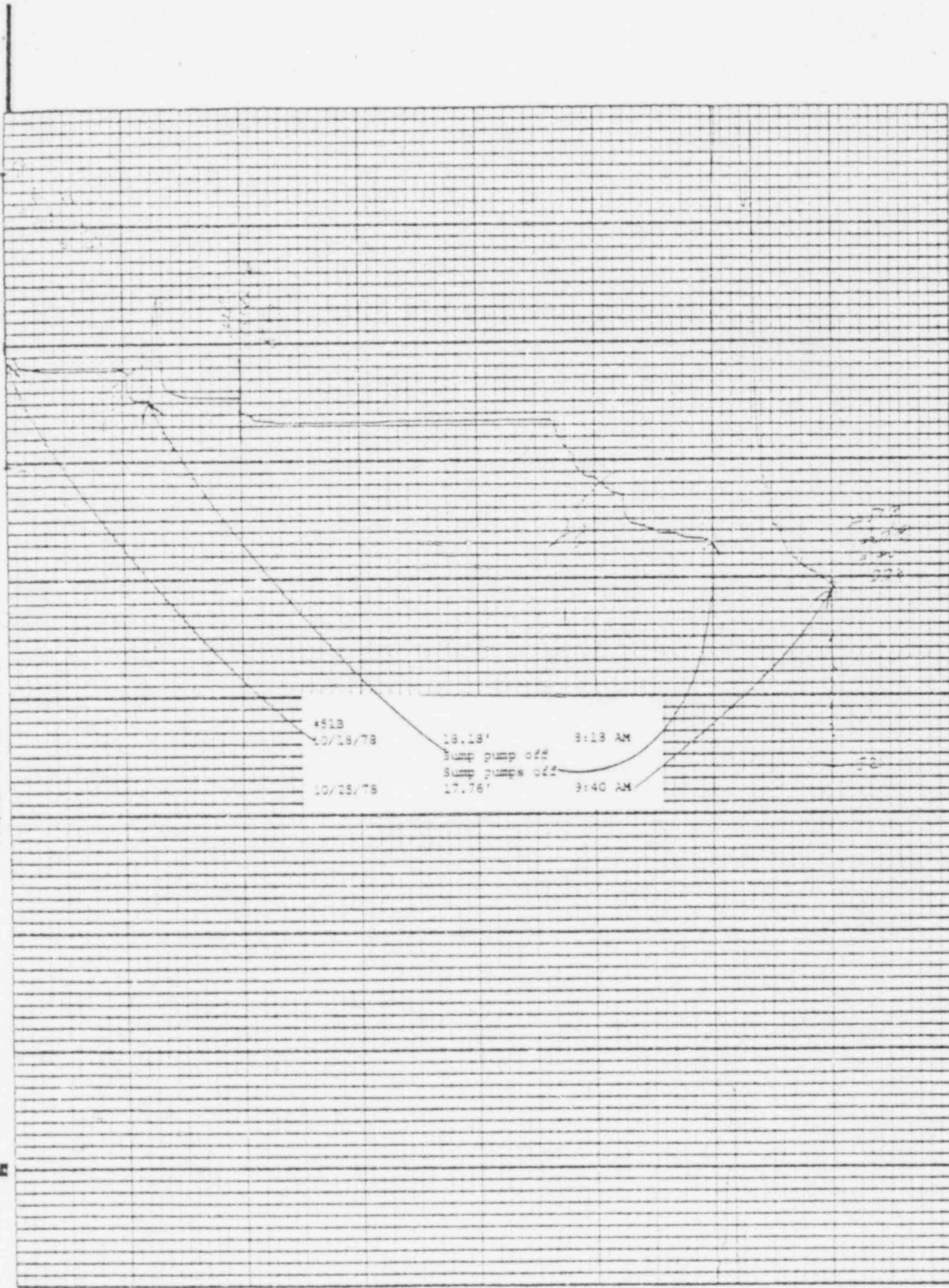


NOTE: On 10/19/78 Sump Pump C was turned off. On 10/24/78 Sump Pump A and C were turned off.

#20
10/18/78 19.12' 9:01 AM
Sump pumps turned off
10/24/78 17.80' 9:55 AM

Leipold & Stevens, Inc., Beaverton, Ohio

Form No. 215-A



Leopold & Stevens, Inc., Beaverton, O. c.

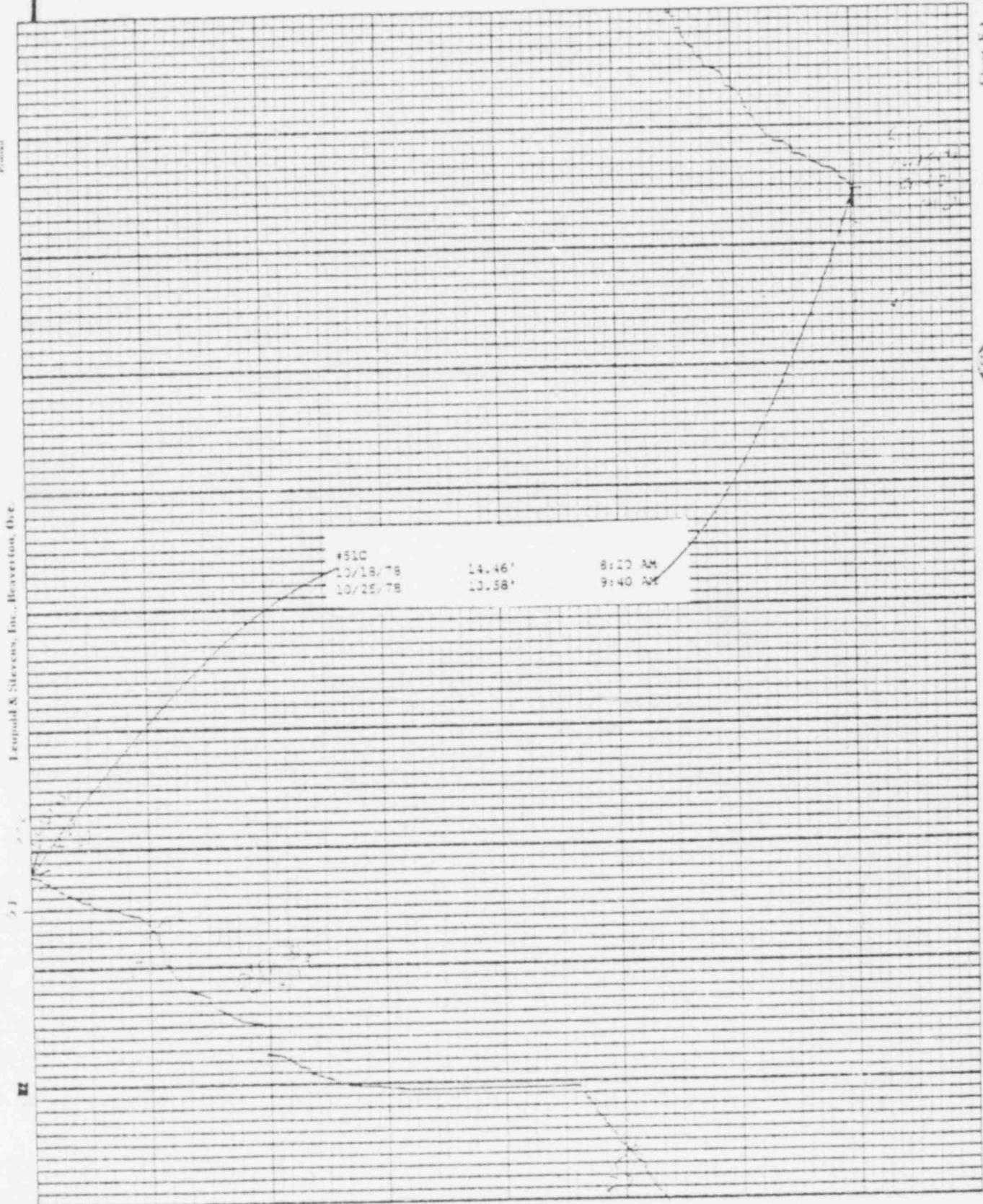
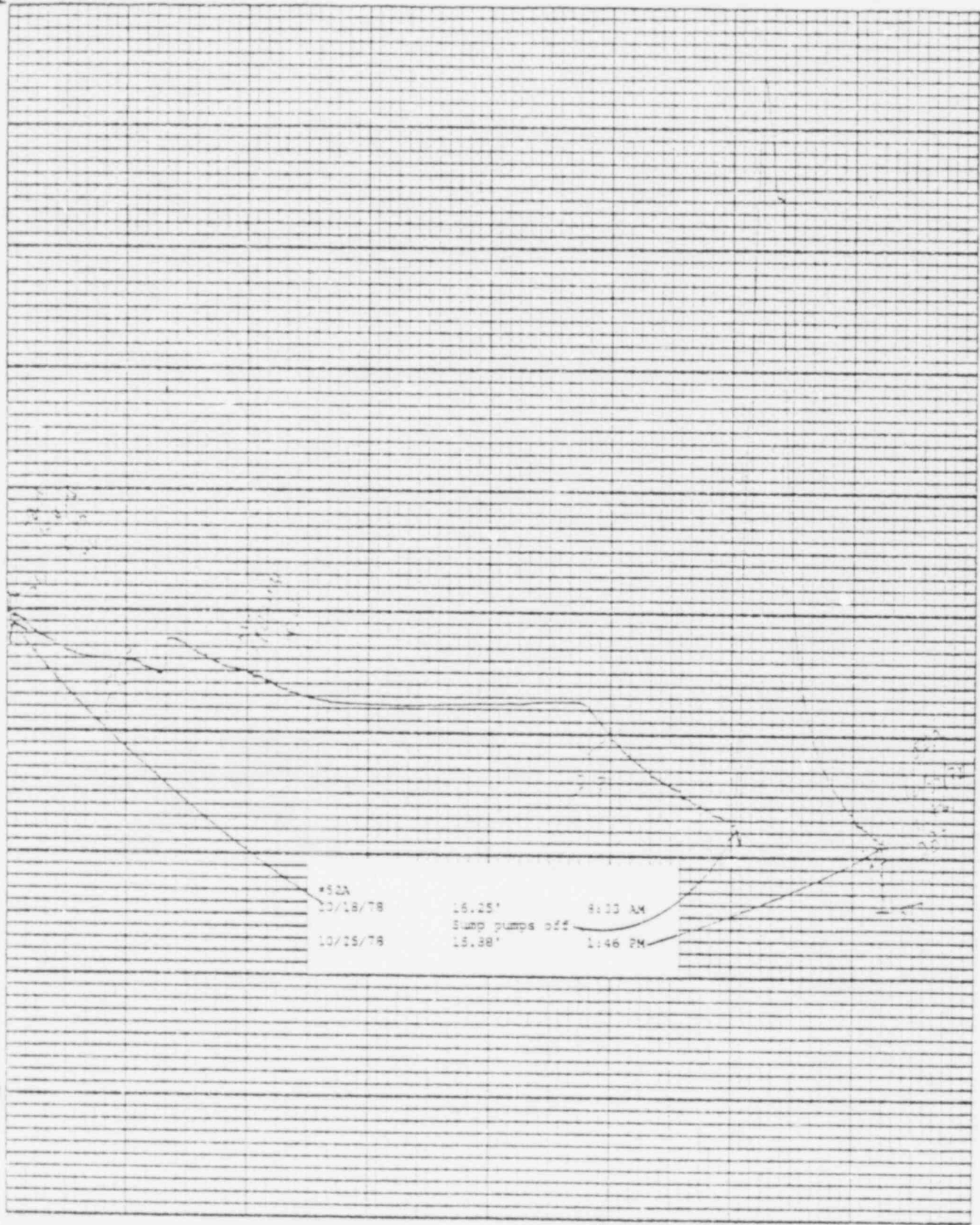


Chart F-1

Stevens Water Level Recorder — Type F

Lempold & Stevens, Inc., Beaverton, Ore

Pressure in PSI



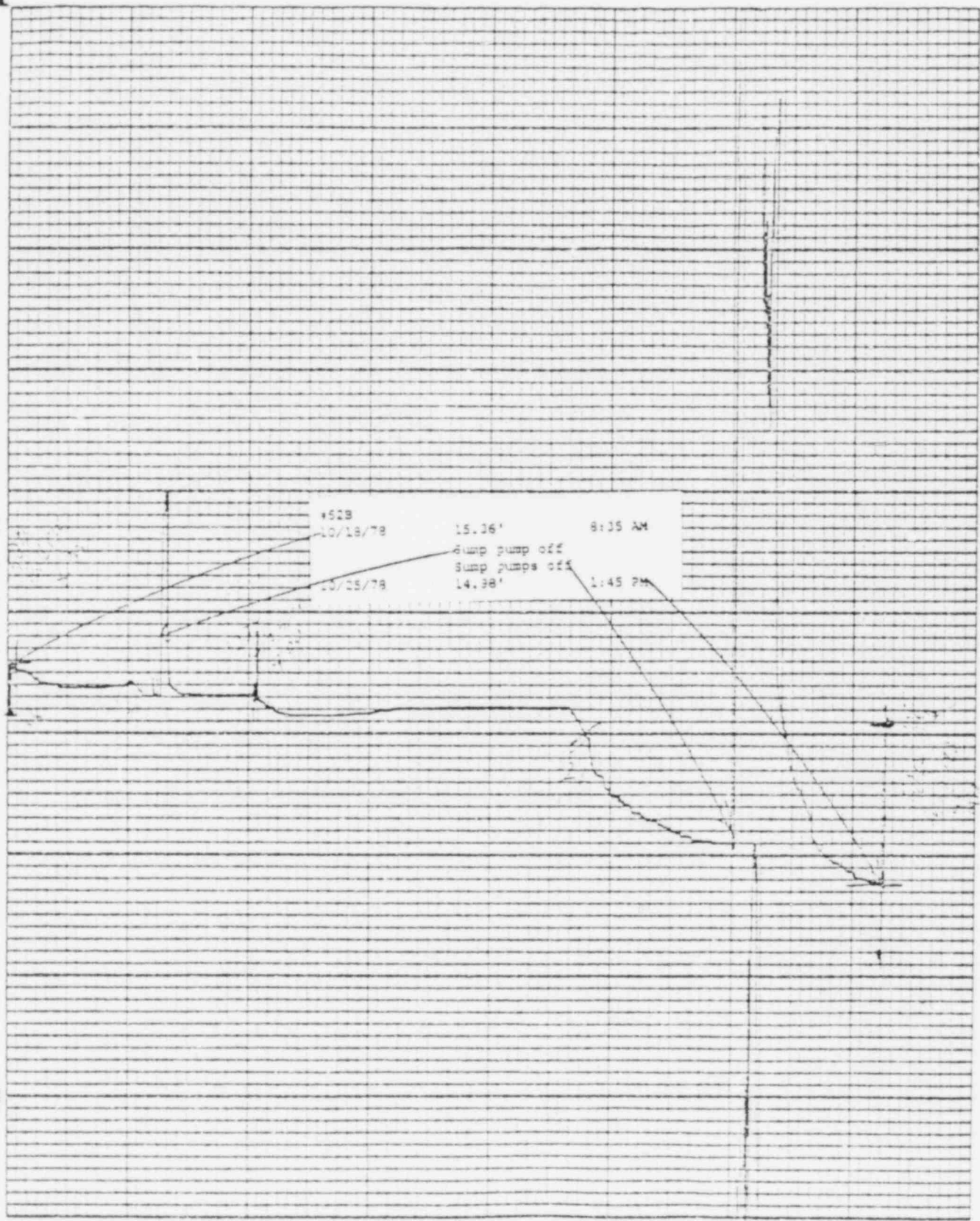
Stevens Water Level Recorder - Type F

Chart F-1

5

Lepold & Stevens, Inc., Beaverton, Ore.

Form 1013-A



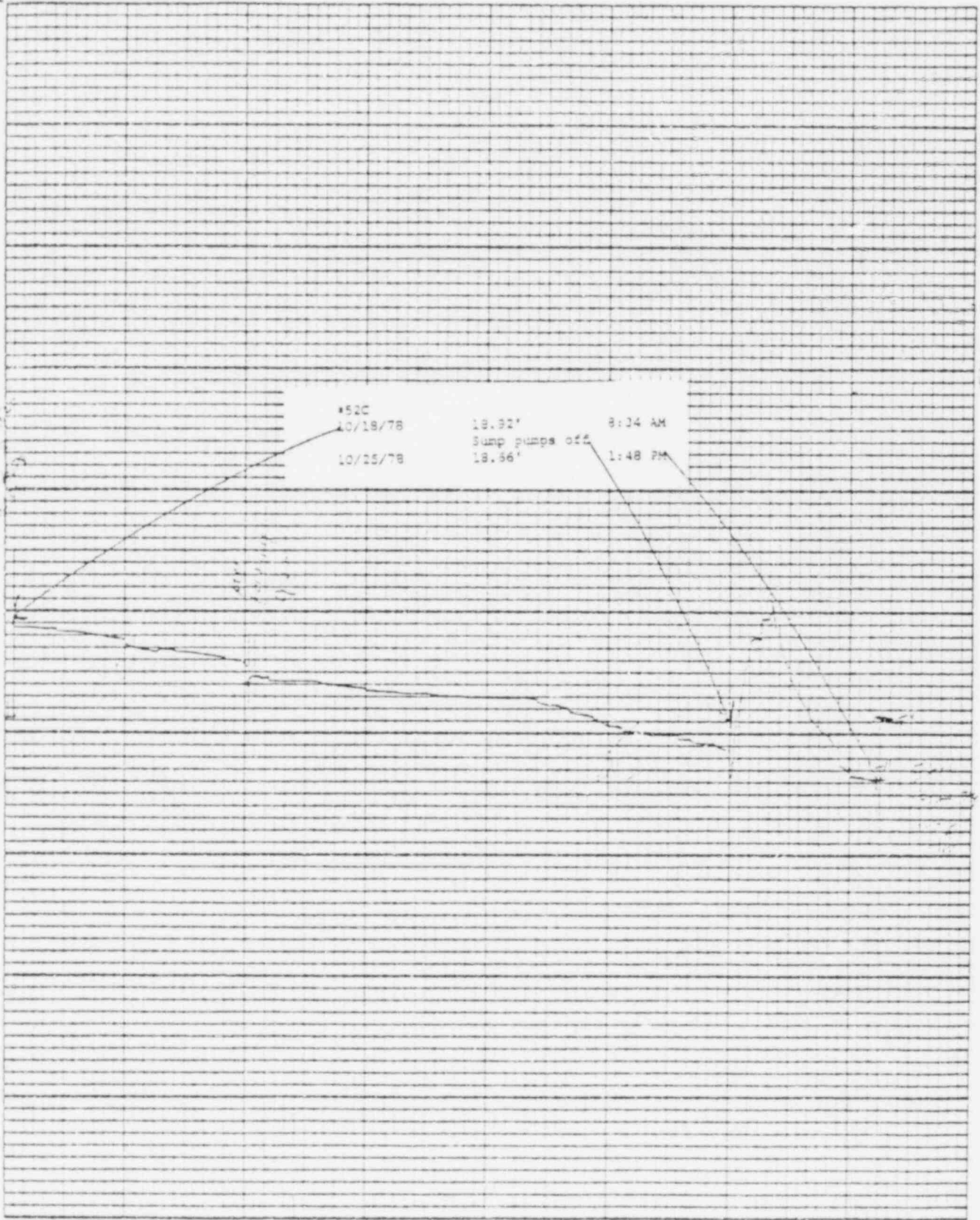
Stevens Water Level Recorder — Type F

Chart F-1

(S)

Plotted on U.S.A.

Leupold & Stevens, Inc., Beaver Dam, Wis.



Streets Water Level Recorder — Type P

Chart F-1

Leopold & Stevens, Inc., Beaverton, Ore.

Point: 28

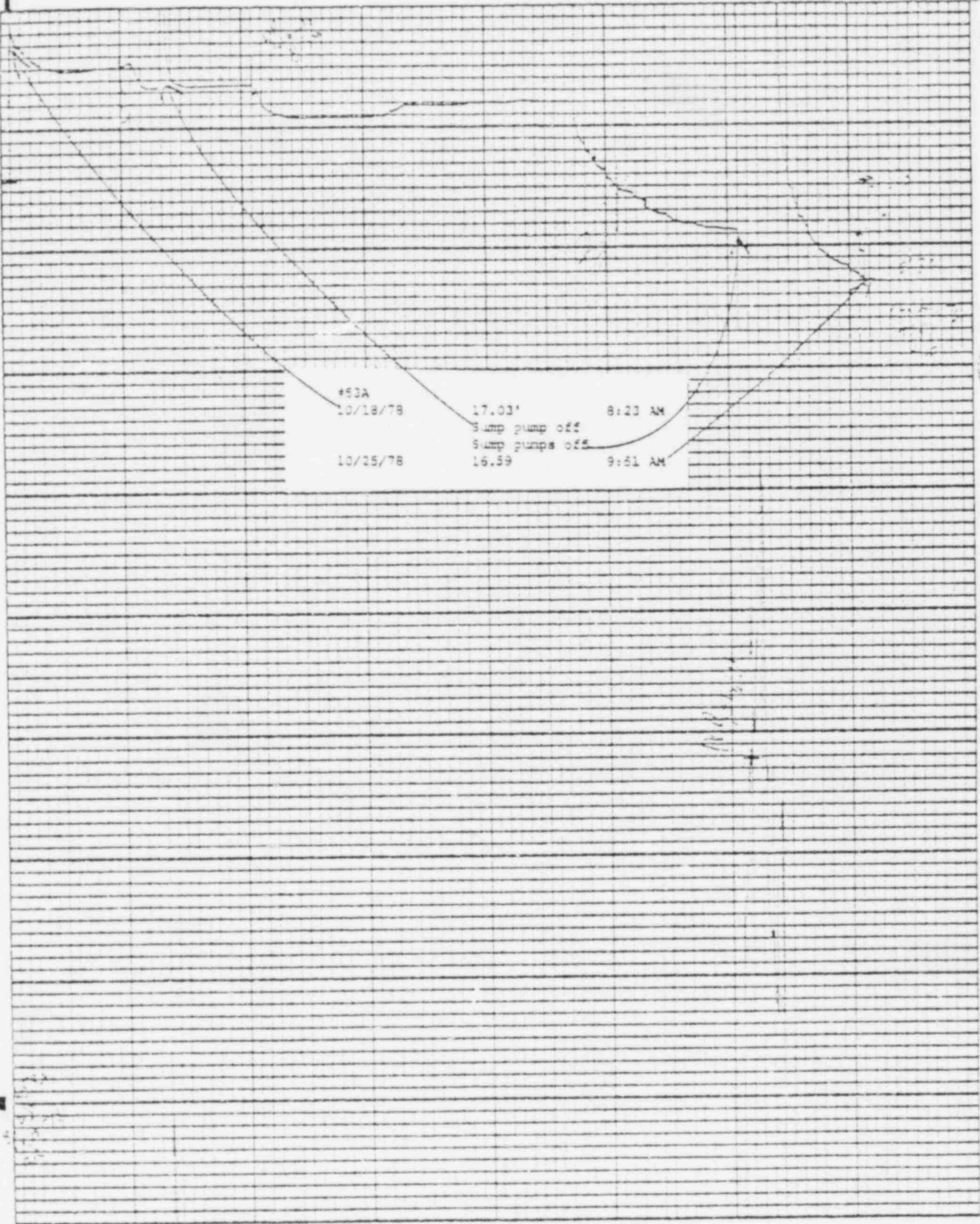


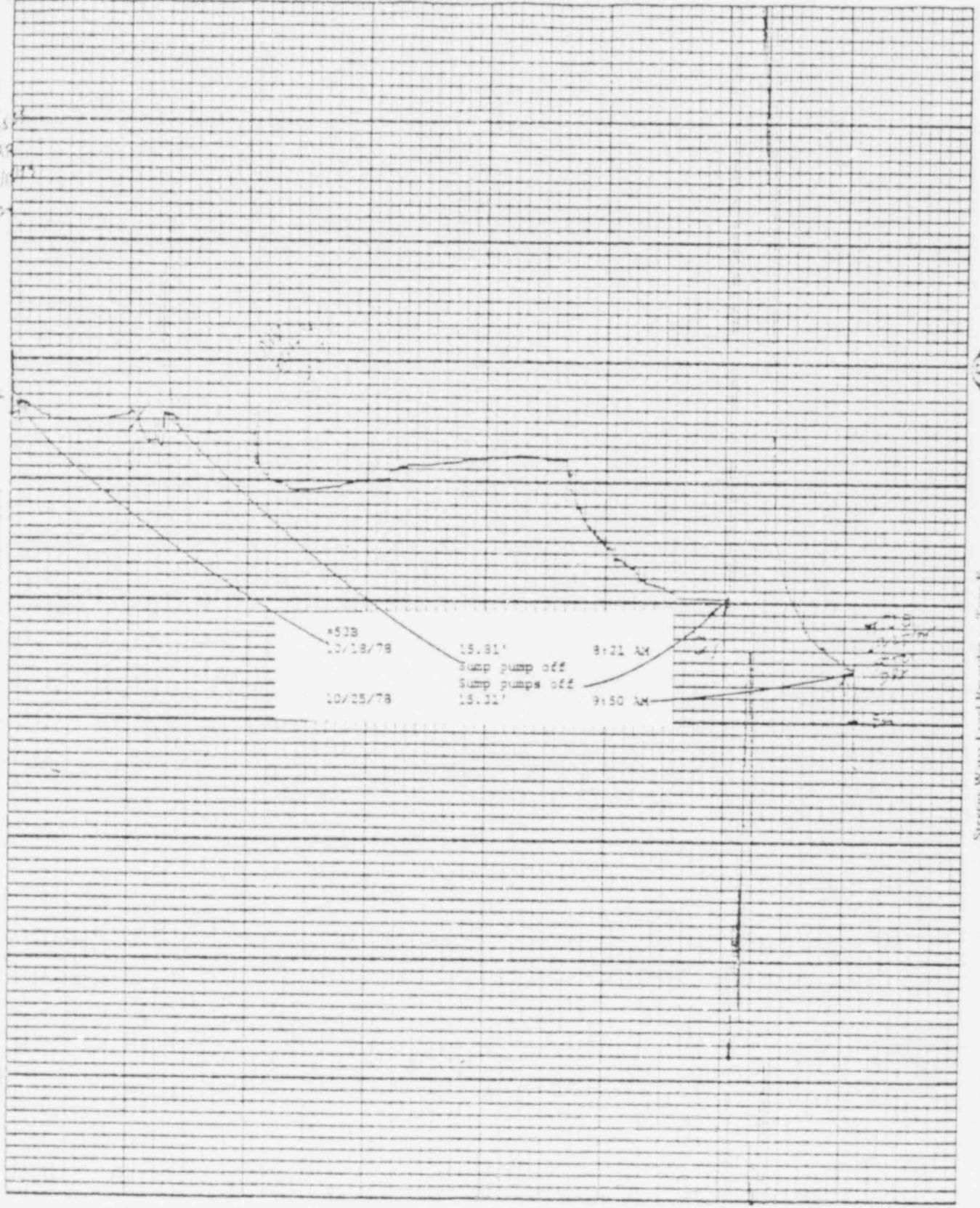
Chart P 1

5

Stevens Water Level Recorder — Type V

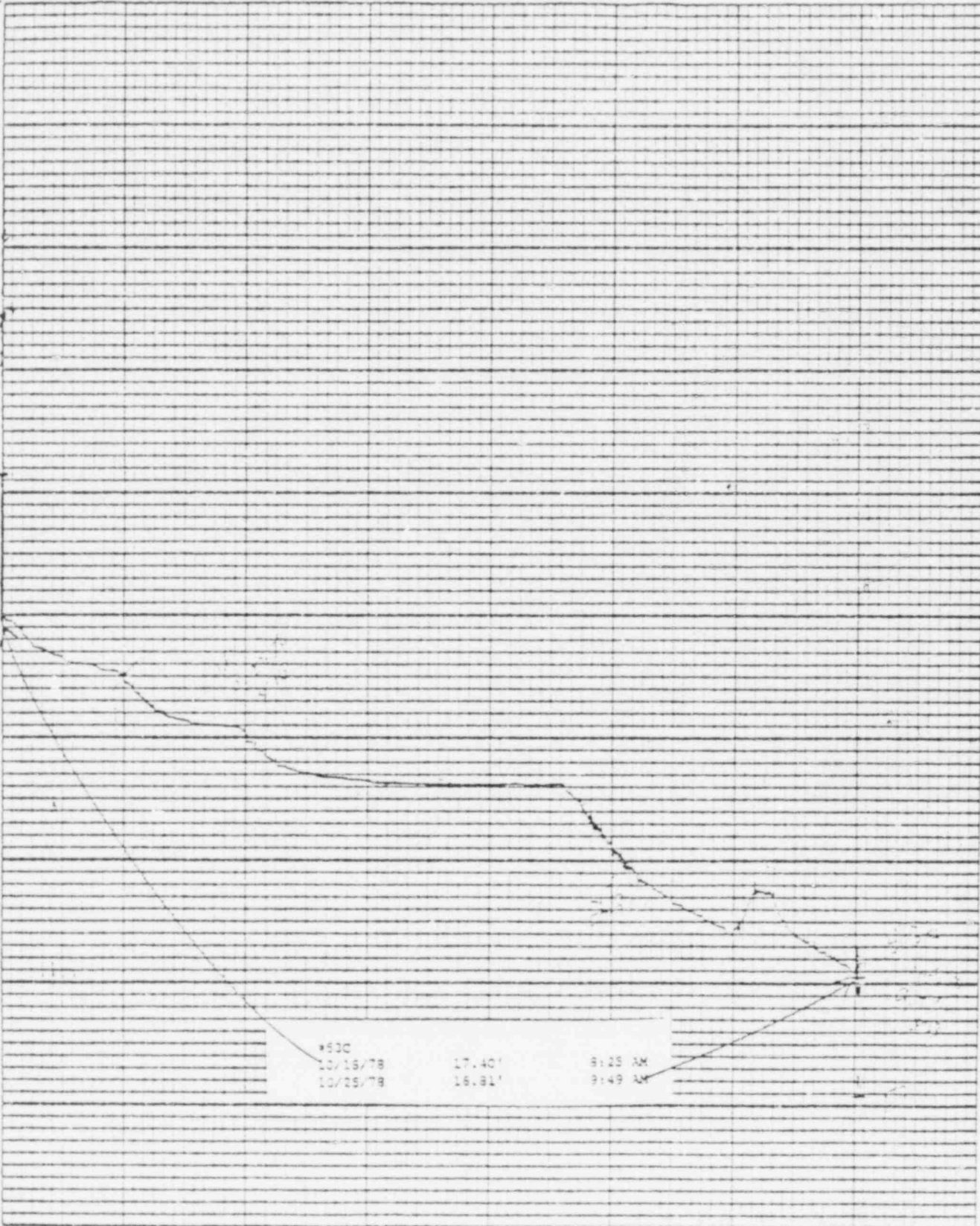
Lemond & Stevens, Inc., Beaverton, Ore.

50
40
30
20
10
0



Printed in U.S.A.

Leopold & Stevens, Inc., Benavertton, Ore.



Leopold & Stevens, Inc., Beaverton, Ore.

Point

25

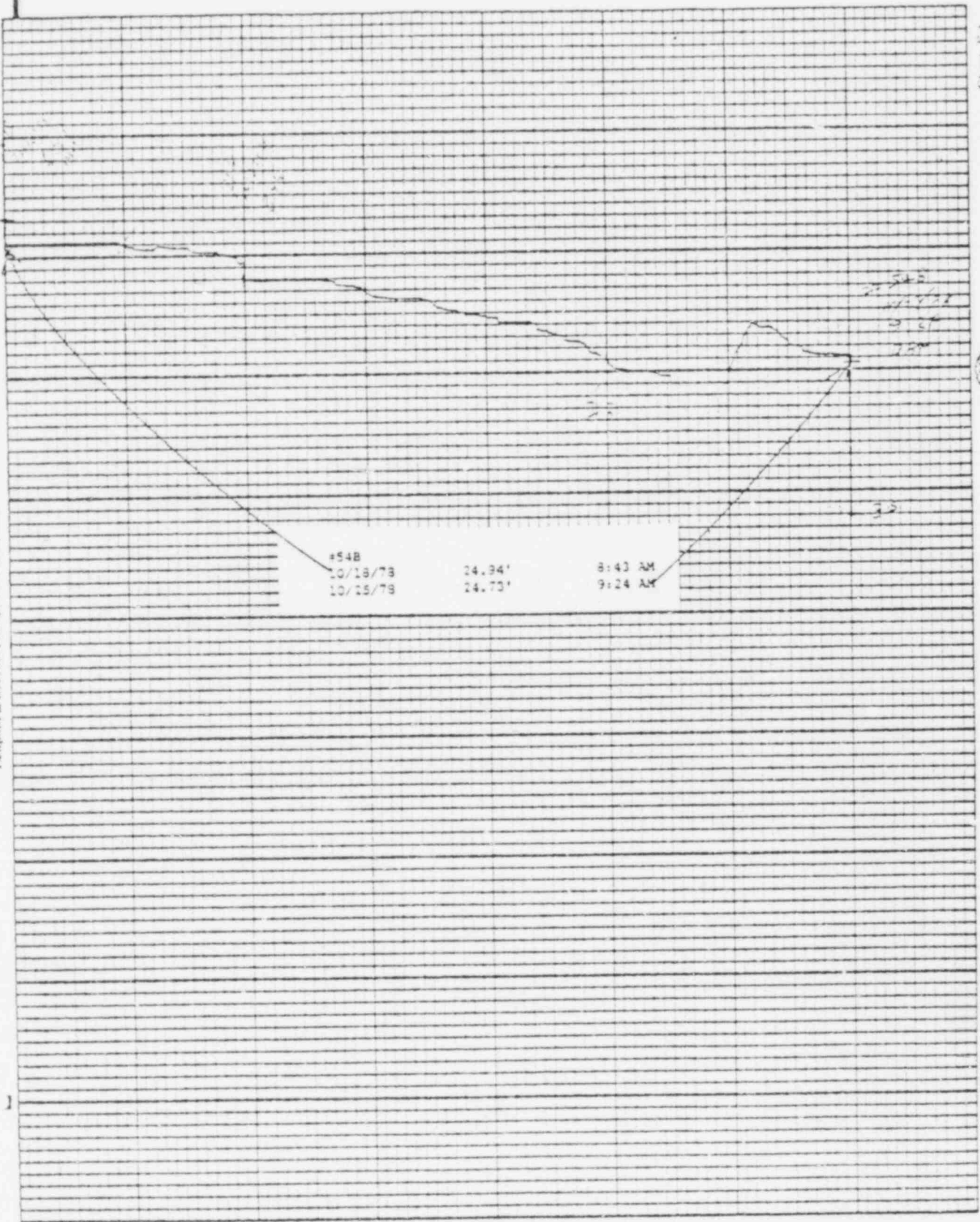
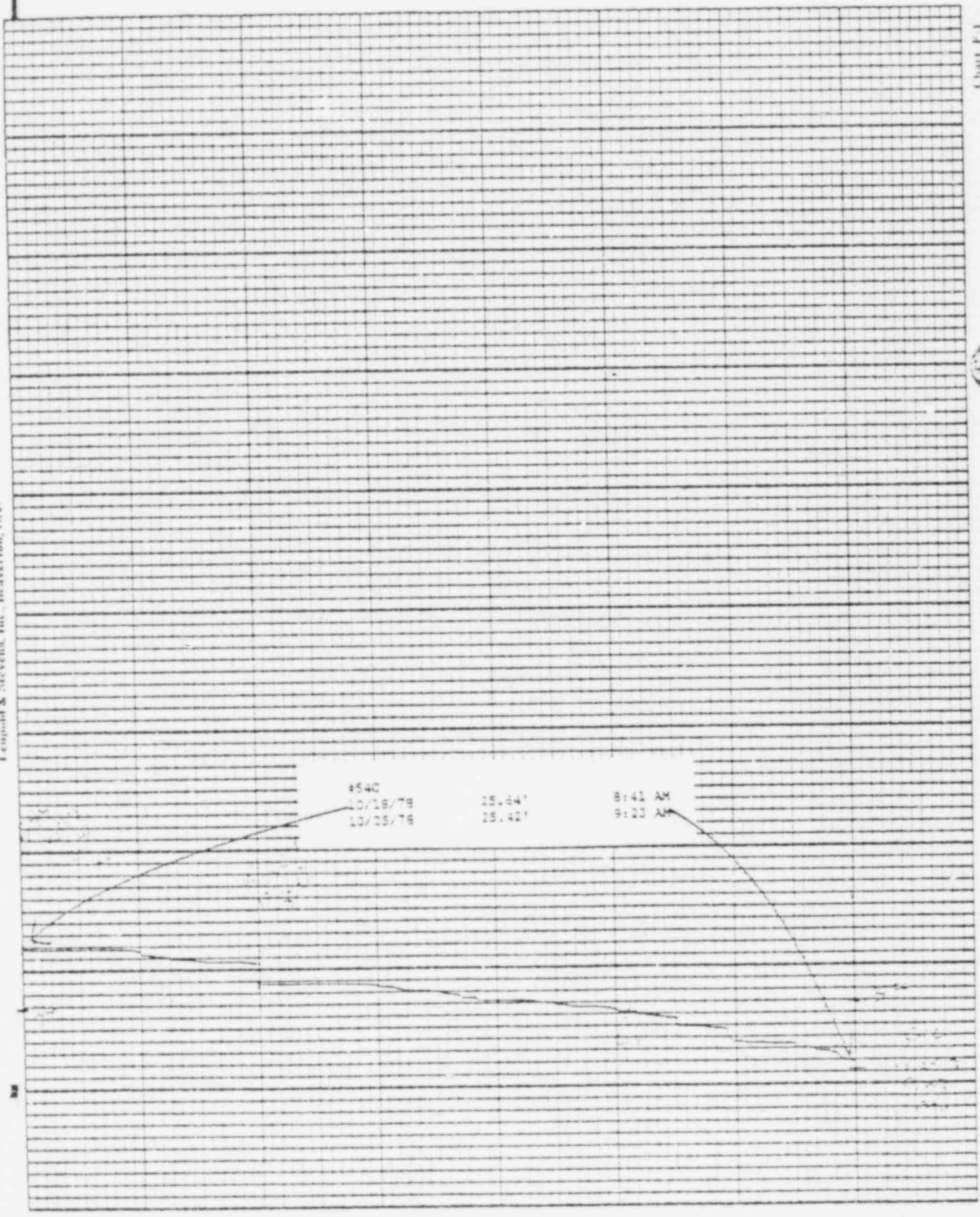


Chart 2-A

Stevens Water Level Recorder — Type P

Lempold & Stevens, Inc., Beaverton, Ore.

Printed by



4546

10:41 AM
11:22 AM

8:41 AM
9:22 AM

8:41 AM
9:22 AM

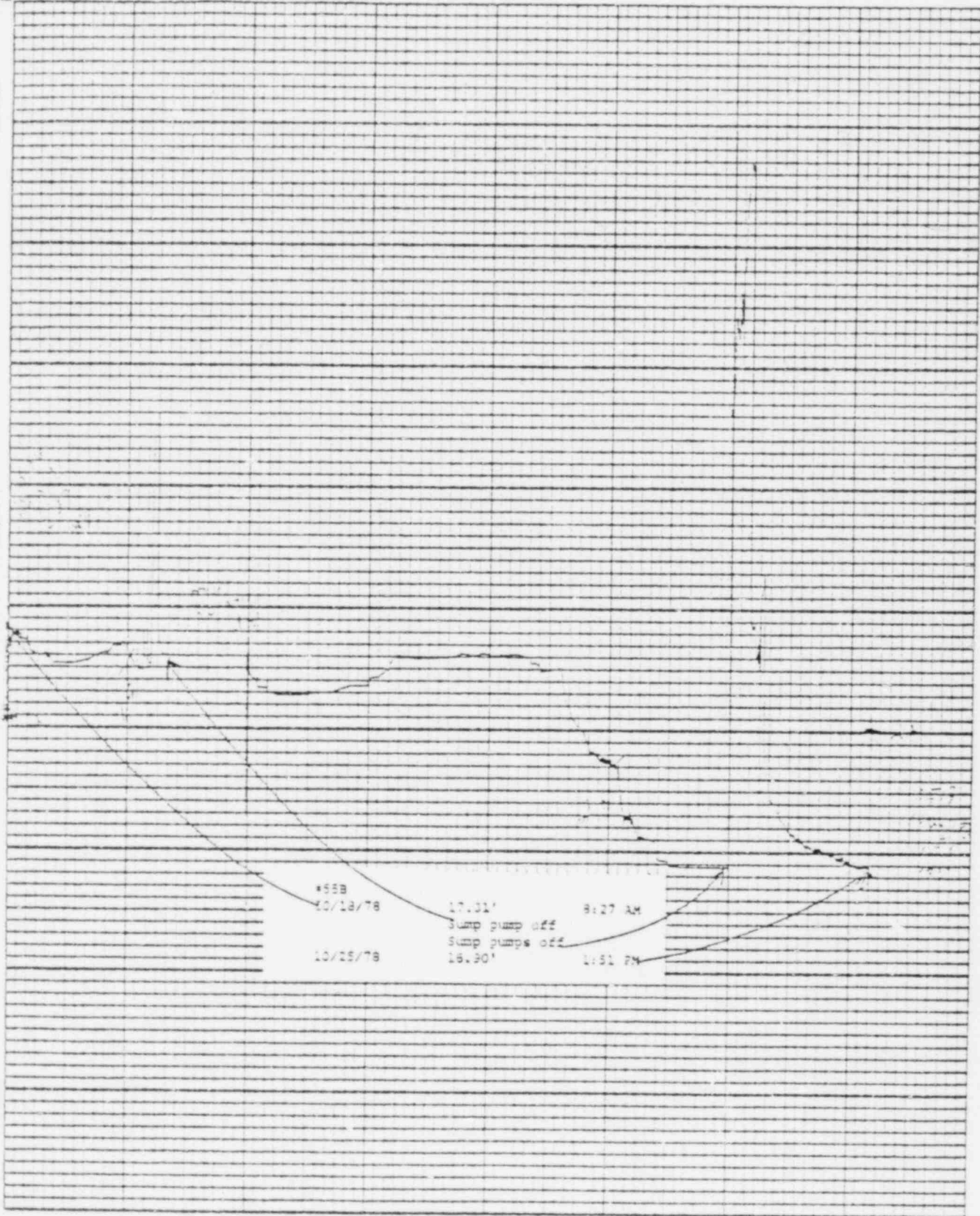
Chart F-1



Stevens Water Level Recorder - Type F

Printed in U.S.A.

Fenwood & Stevens, Inc., Beaverton, Ore.

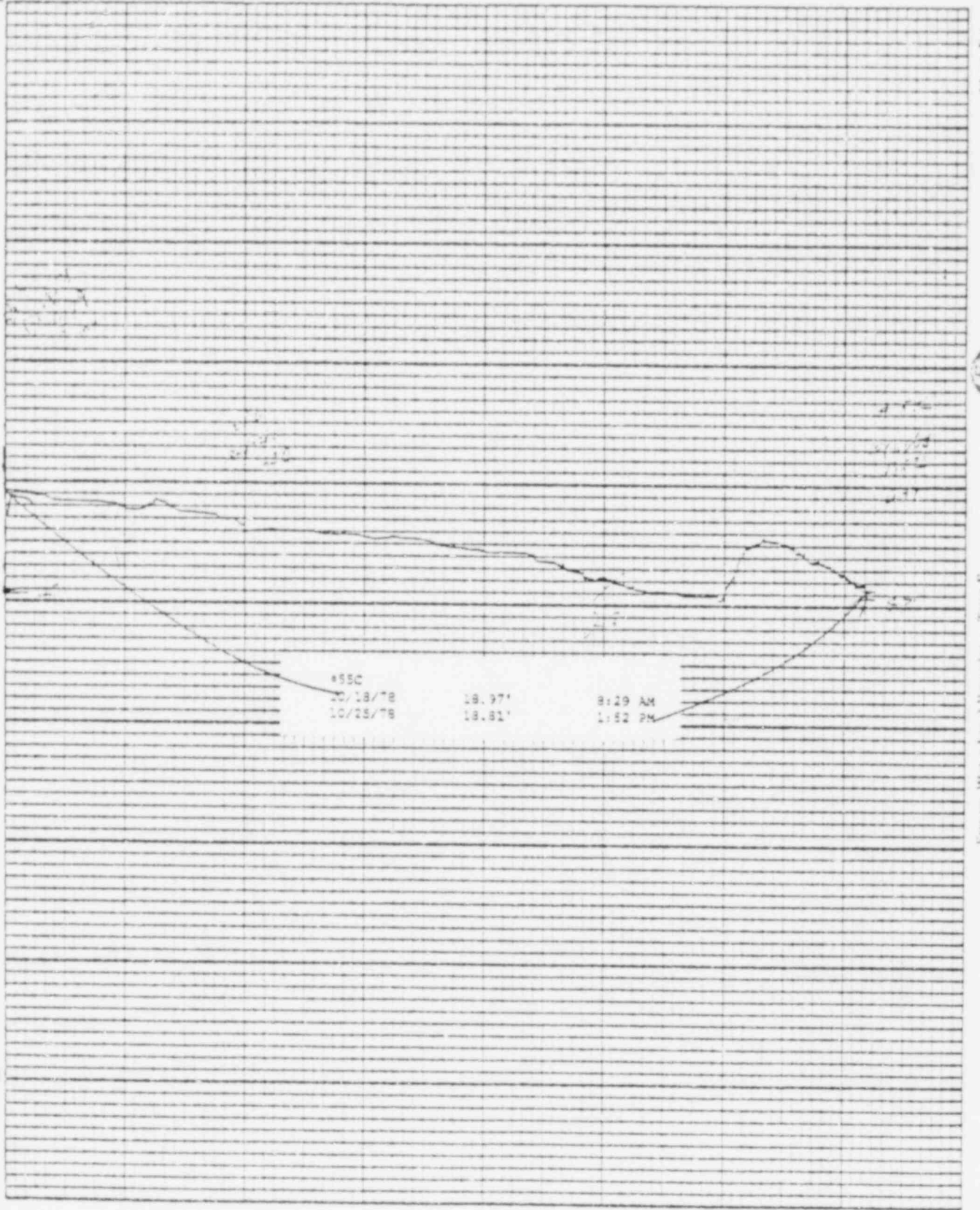


Sievers Water Level Recorder — Type F

Chart F-1

Lempold & Stevens, Inc. Haverston, Ore.

Printed on 11 x 17



Stevens Water Level Recorder - Type F



Chart F-1

Leopold & Stevens, Inc., Beaverton, Ore.

Form 100-1-A

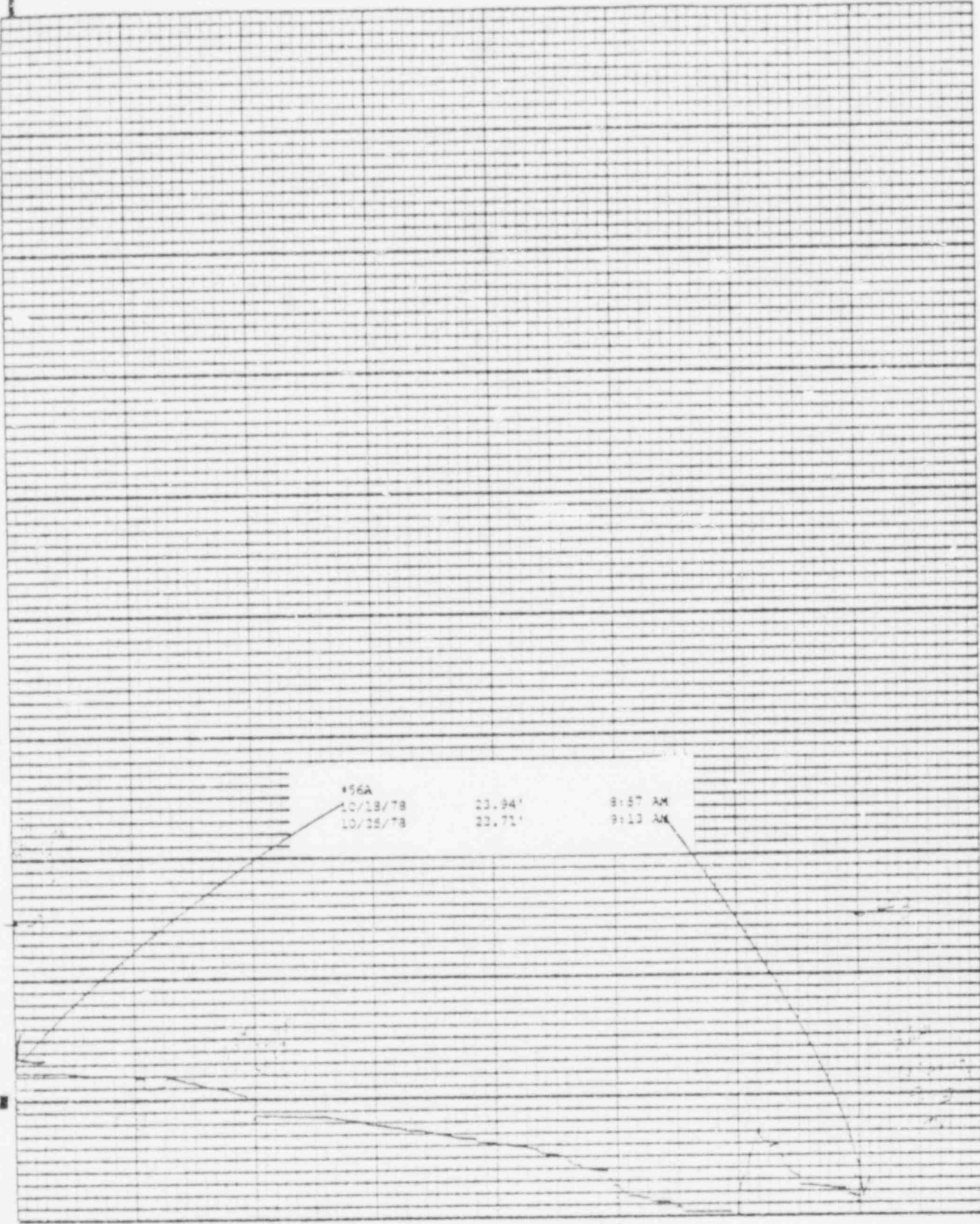
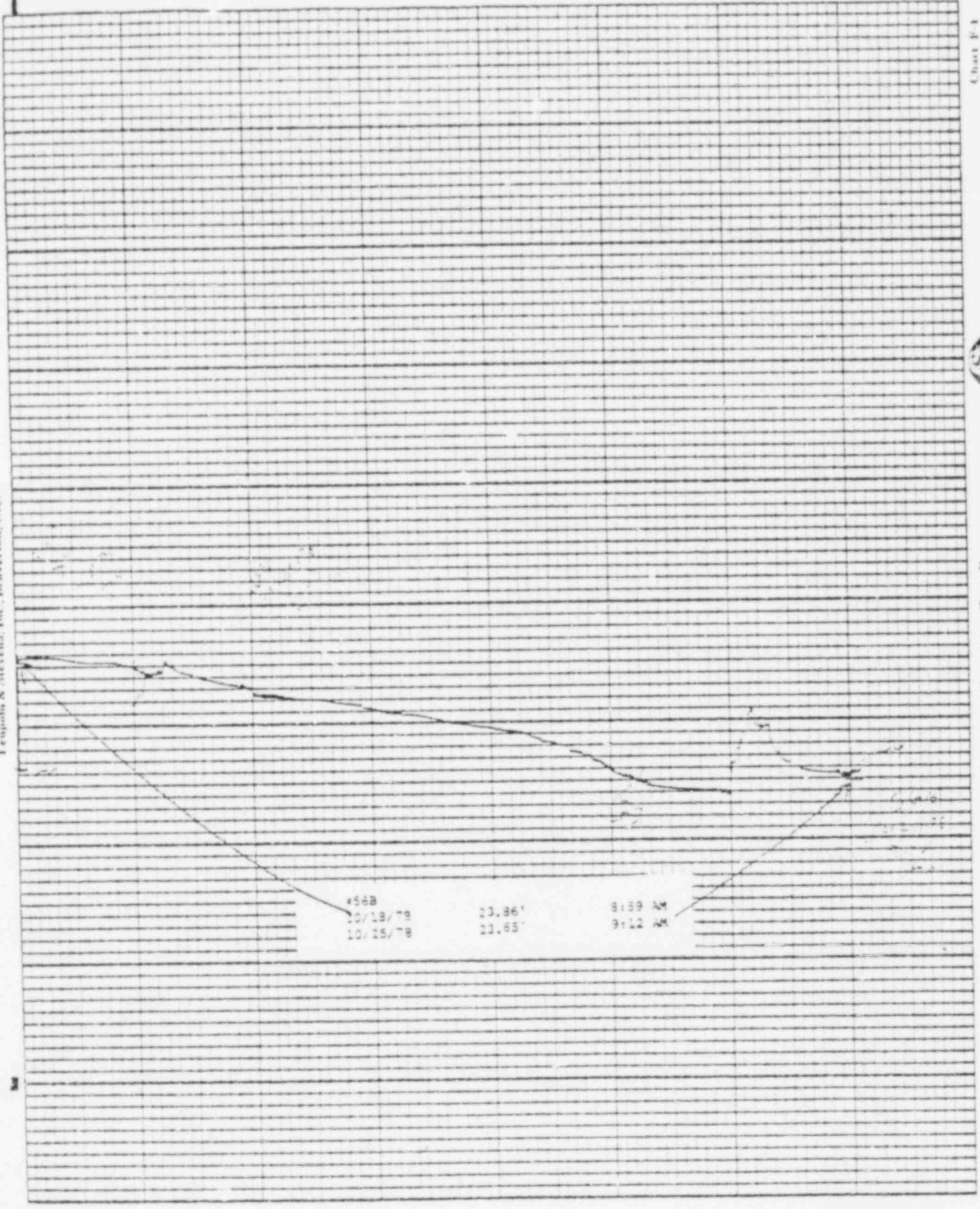


Chart P-1

Stevens Water Level Recorder - Type F



Temple & Stevens, Inc., Beaverton, Ore.



4.55
1.0 / 1.0
1.0 / 1.0
1.0 / 1.0
1.0 / 1.0

1.0 / 1.0
1.0 / 1.0
1.0 / 1.0

1.0 / 1.0
1.0 / 1.0
1.0 / 1.0

Chart F-1



Stevens Water Level Recorder — Type F

Leopold & Stevens, Inc., Beaverton, Ore.

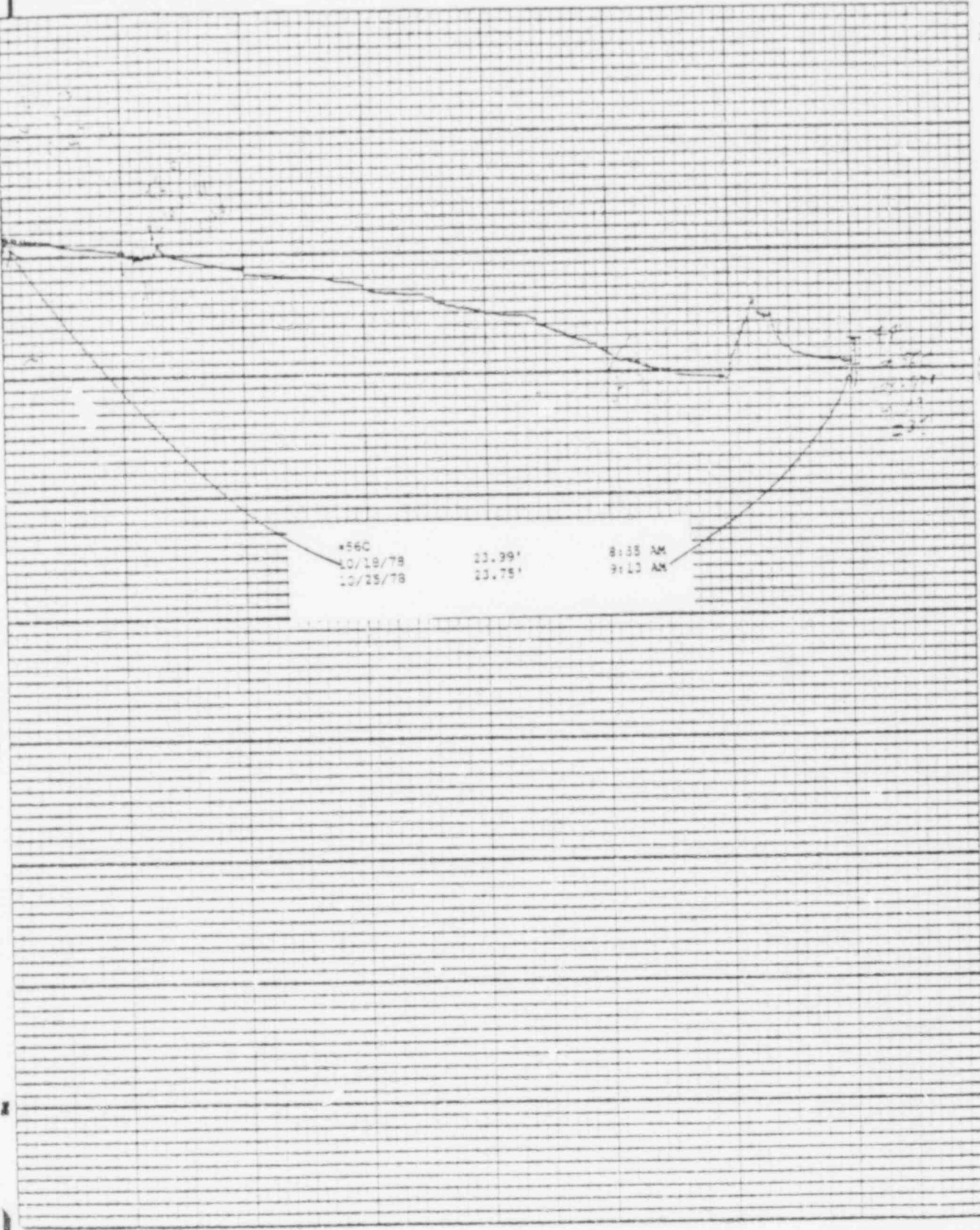
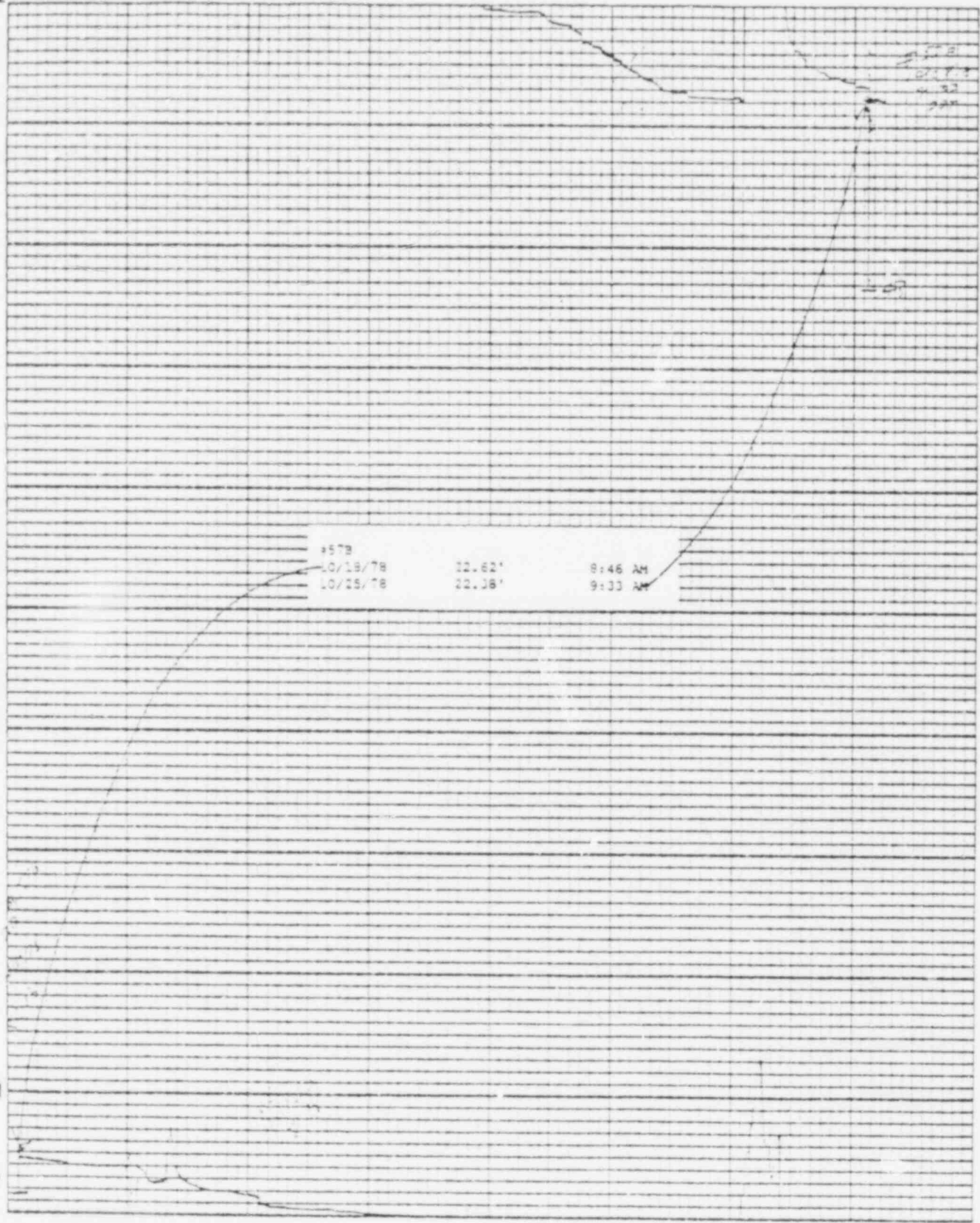


Chart F-1

Stevens Wave Level Recorder — Type F

Leopold & Stevens, Inc., Beaverton, Ore.

Pressure in P.S.I.



Chicago, Ill. U.S.A.

Leopold & Stevens, Inc., Heavens, Ill., U.S.A.

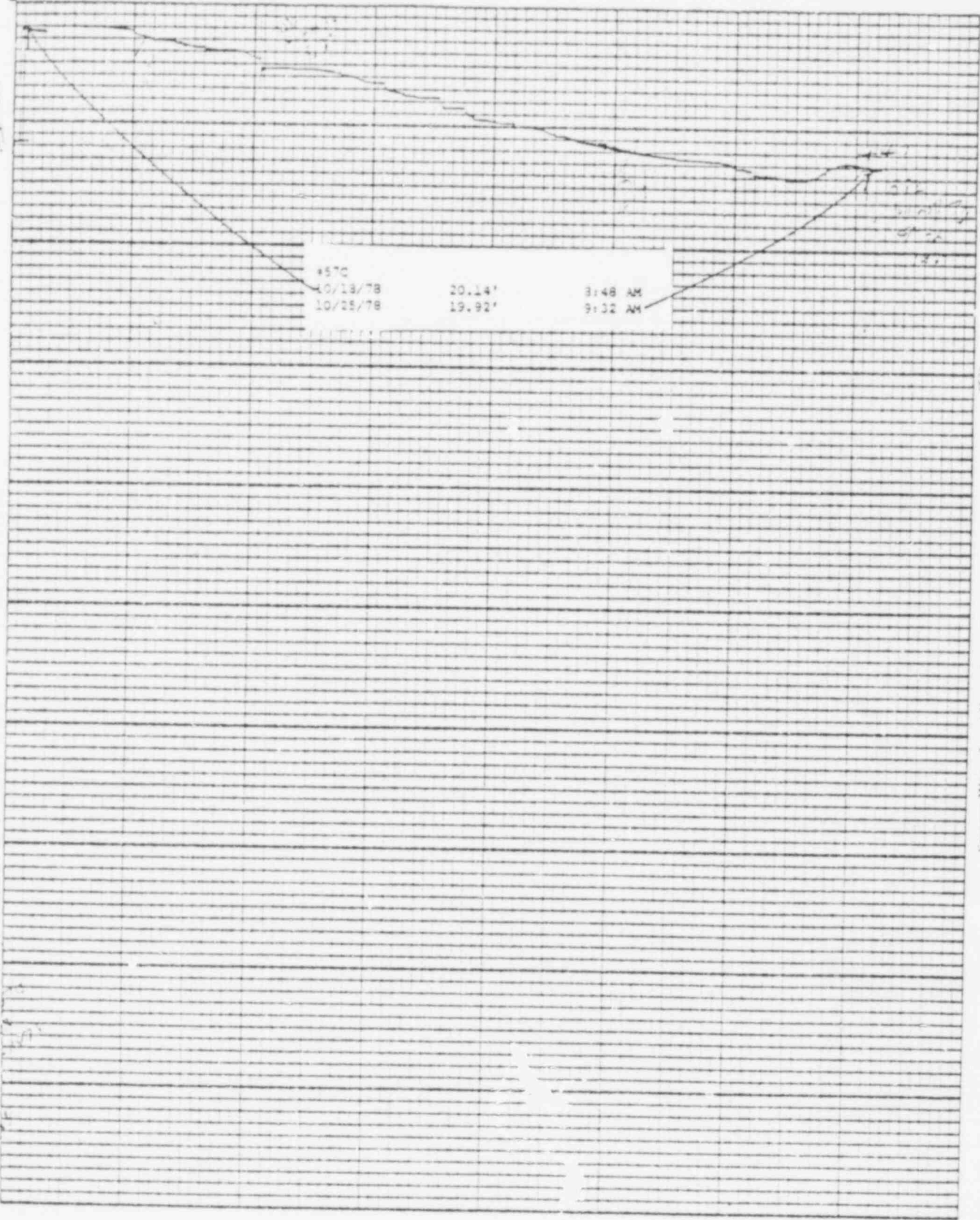


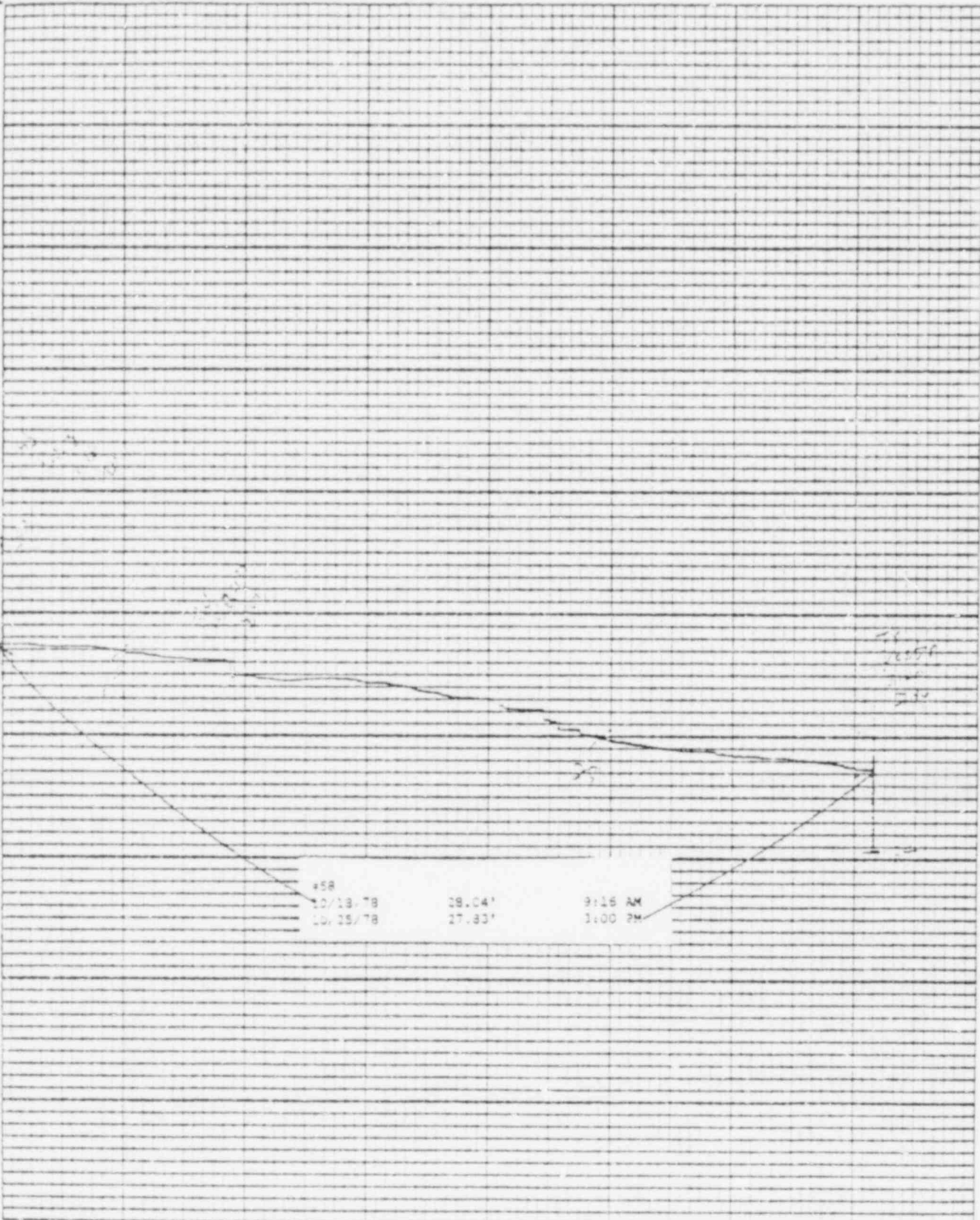
Chart F-1

(5)

Stevens Water Level Recorder - Type F

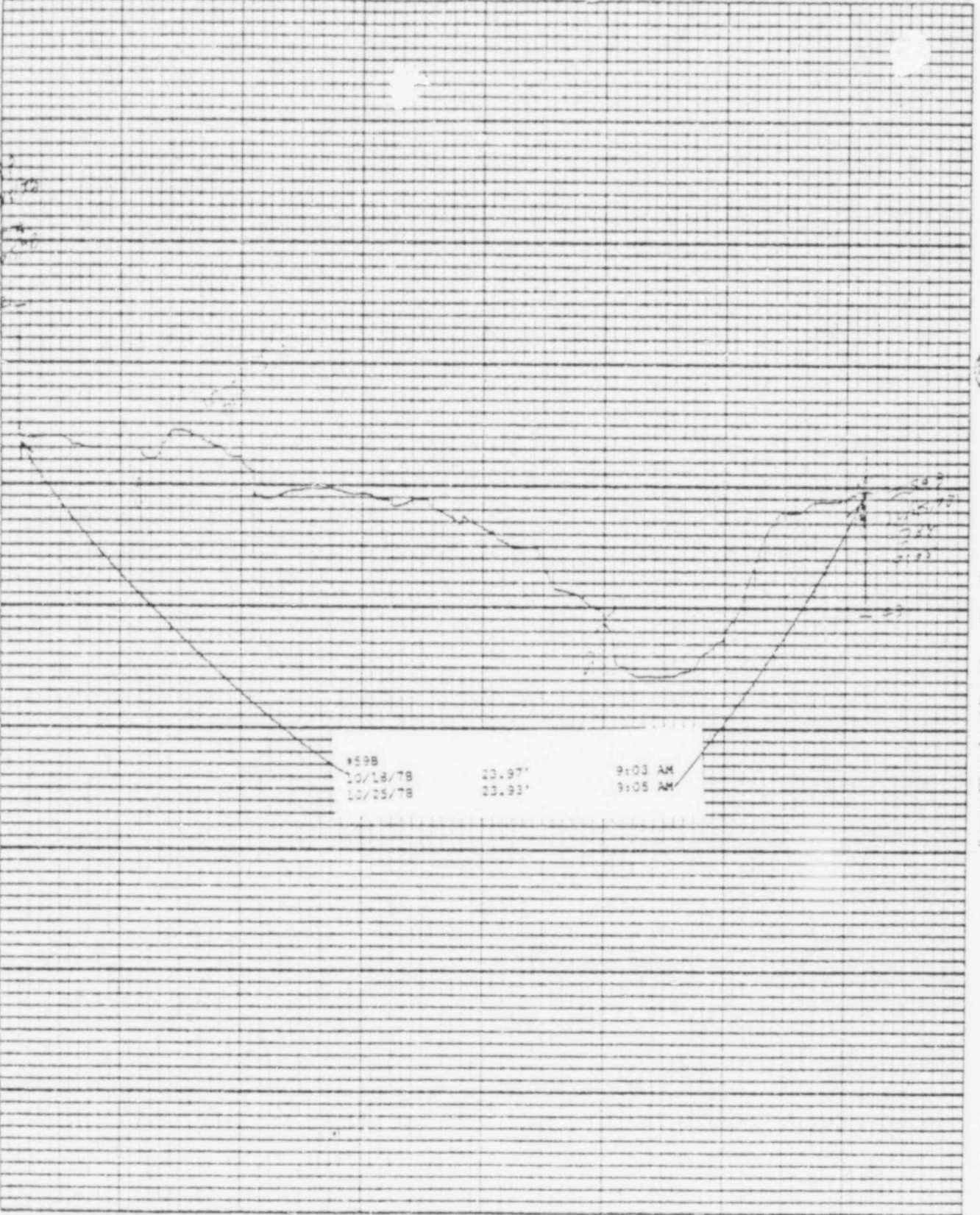
Printed on U.S.A.

Lemond & Stevens, Inc. Beaver Dam, Wis.



Leopold & Stevens, Inc., Beaverton, Ore.

Form No. 113-A



4598	11.07'	9:05 AM
10/18/78	11.01'	9:05 AM
10/15/78		

Leopold & Stevens, Inc., Beaverton, Ore.

Pressure in P.S.I.

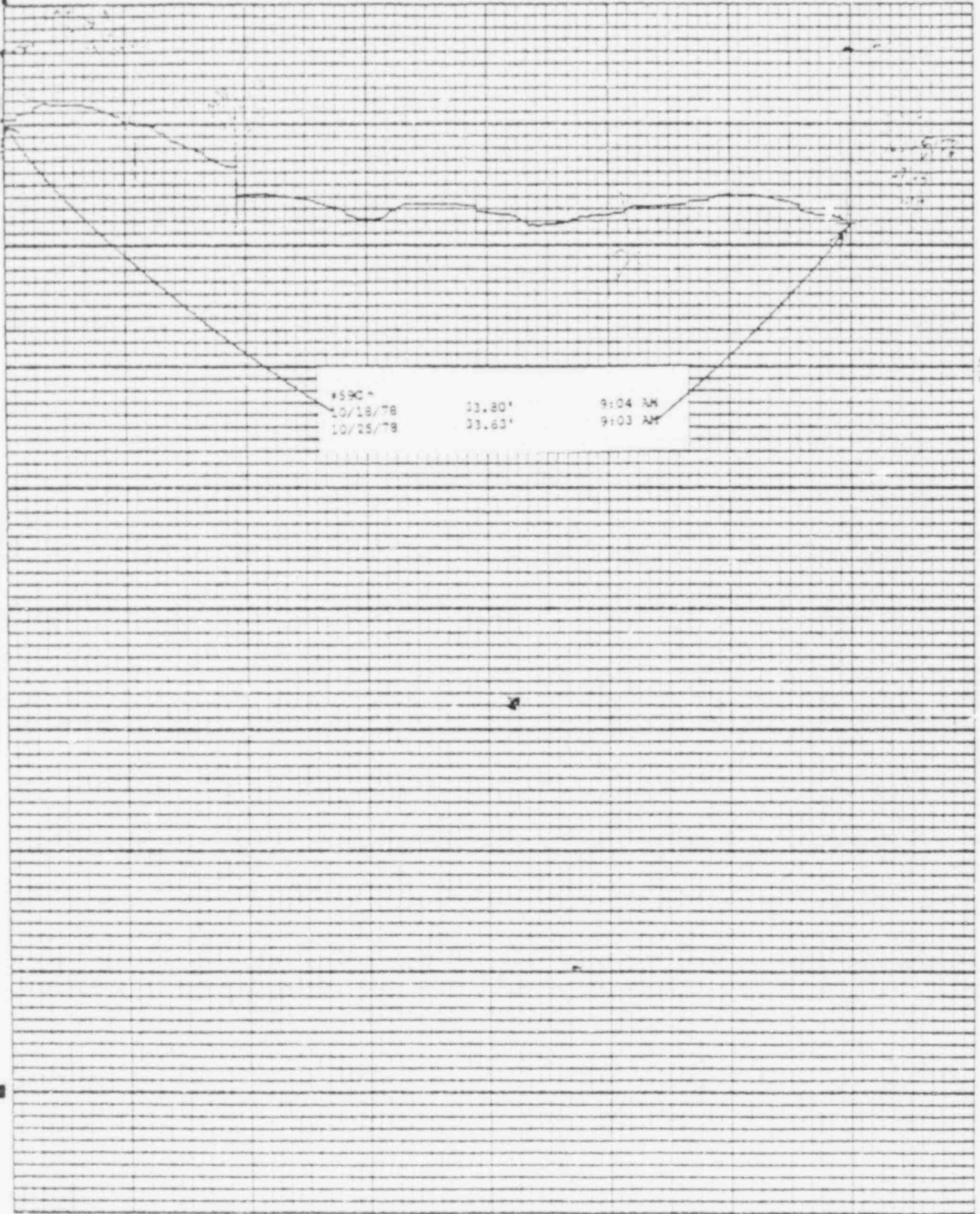


Chart P-1

(5)

Stevens Water Level Recorder - Type B

POND LEVELS

<u>POND</u>	<u>10/26/78</u>
1	28.98'
2	30.54'
3	28.96'
4	24.02'
5	23.54'
6	33.26'
7	28.75'
8	DRY
9	28.49'
10	38.87'
11	40.07'
12	36.26'
13	37.03'

MD:lr
10/26/78

BAILLY WELLS WITHOUT RECORDERS

10/25/78

<u>WELL #</u>	<u>WATER ELEVATION IN FEET</u>
62	31.62
65	26.93
67	22.10
72	10.44
73	10.78
74	13.64

MD:lr
10/26/78

PNEUMATIC PRESSURE TRANSDUCERS

10/25/78

<u>TRANSDUCER</u>	<u>WATER ELEVATION IN FEET</u>
P-1	6.2
P-2	10.6
P-3	5.5
P-4	12.3
P-5	14.6
P-6	14.8

MD:lr
10/26/78

WATER METER READINGS

<u>DATE</u>	<u>TIME</u>	<u>METER READING (GALLONS)</u>	<u>INSTANTANEOUS FLOW RATE (GPM)</u>
<u>Sump Pump Discharge</u>			
10/19/78	8:23 AM	188028250	274
10/20/78	8:42 AM	188422100	277
10/23/78	8:02 AM	189596500	269
<u>Well Point Discharge</u>			
10/19/78	8:27 AM	585750	723
10/20/78	8:39 AM	864660	853
10/23/78	7:58 AM	1340500	359

MD:lr
10/26/78