

**OPERATING DATA REPORT**

DOCKET NO. 50-302  
 DATE 8/1/83  
 COMPLETED BY D. Bogart  
 TELEPHONE (904) 795-6486

**OPERATING STATUS**

1. Unit Name: Crystal River Unit #3
2. Reporting Period: 7/1/83 - 7/31/83
3. Licensed Thermal Power (MWt): 2544
4. Nameplate Rating (Gross MWe): 890
5. Design Electrical Rating (Net MWe): 825
6. Maximum Dependable Capacity (Gross MWe): 850
7. Maximum Dependable Capacity (Net MWe): 811
8. If Changes Occur in Capacity Ratings (Items Number 3 Through 7) Since Last Report, Give Reasons:  
N/A

Notes

9. Power Level To Which Restricted, If Any (Net MWe): 608 MW
10. Reasons For Restrictions, If Any: RCP-1C seal is bad.

	This Month	Yr.-to-Date	Cumulative
11. Hours In Reporting Period	744	5087	55967
12. Number Of Hours Reactor Was Critical	170.9	2030.2	34237.4
13. Reactor Reserve Shutdown Hours	0	0	1280.3
14. Hours Generator On-Line	118.1	1977.4	33444.3
15. Unit Reserve Shutdown Hours	0	0	0
16. Gross Thermal Energy Generated (MWH)	122161	4610565	75135520
17. Gross Electrical Energy Generated (MWH)	37450	1611346	25577963
18. Net Electrical Energy Generated (MWH)	32673	1534926	24279806
19. Unit Service Factor	15.9%	38.9%	59.8%
20. Unit Availability Factor	15.9%	38.9%	59.8%
21. Unit Capacity Factor (Using MDC Net)	5.4%	37.2%	55.0%
22. Unit Capacity Factor (Using DER Net)	5.3%	36.6%	52.6%
23. Unit Forced Outage Rate	7.1%	0.5%	24.9%

24. Shutdowns Scheduled Over Next 6 Months (Type, Date, and Duration of Each):  
Maintenance outage to replace RCP-1C seal package scheduled for October 1 to last 11 days.

25. If Shut Down At End Of Report Period, Estimated Date of Startup: N/A

26. Units In Test Status (Prior to Commercial Operation):	Forecast	Achieved
INITIAL CRITICALITY	_____	<u>1/14/77</u>
INITIAL ELECTRICITY	_____	<u>1/30/77</u>
COMMERCIAL OPERATION	_____	<u>3/13/77</u>

**AVERAGE DAILY UNIT POWER LEVEL**

DOCKET NO. 50-302

UNIT FLCRP-3

DATE 8/2/83

COMPLETED BY D. Bogart

TELEPHONE (904) 795-6486

MONTH July 1983

DAY	AVERAGE DAILY POWER LEVEL (MWe-Net)	DAY	AVERAGE DAILY POWER LEVEL (MWe-Net)
1	<u>0</u>	17	<u>0</u>
2	<u>0</u>	18	<u>0</u>
3	<u>0</u>	19	<u>0</u>
4	<u>0</u>	20	<u>0</u>
5	<u>0</u>	21	<u>0</u>
6	<u>0</u>	22	<u>0</u>
7	<u>0</u>	23	<u>0</u>
8	<u>0</u>	24	<u>0</u>
9	<u>0</u>	25	<u>0</u>
10	<u>0</u>	26	<u>0</u>
11	<u>0</u>	27	<u>163</u>
12	<u>0</u>	28	<u>197</u>
13	<u>0</u>	29	<u>199</u>
14	<u>0</u>	30	<u>405</u>
15	<u>0</u>	31	<u>448</u>
16	<u>0</u>		

**INSTRUCTIONS**

On this format, list the average daily unit power level in MWe-Net for each day in the reporting month. Compute to the nearest whole megawatt.

**UNIT SHUTDOWNS AND POWER REDUCTIONS**

DOCKET NO. 50-302  
 UNIT NAME FLCRP-3  
 DATE 8/2/83  
 COMPLETED BY D. Fields  
 TELEPHONE (904) 795-6486

REPORT MONTH 7/83

No.	Date	Type <sup>1</sup>	Duration (Hours)	Reason <sup>2</sup>	Method of Shutting Down Reactor <sup>3</sup>	Licensee Event Report #	System Code <sup>4</sup>	Component Code <sup>5</sup>	Cause & Corrective Action to Prevent Recurrence
83-08	830726	F	7	H	3	N/A	HH	XXXXXX	During startup following refueling outage feedwater was lost due to a low deaerator level which caused a reactor scram on high RCS pressure.
83-09	830726	F	9	G	3	N/A	CH	PUMPXX	During startup from above trip an overfeed event occurred when starting the second mainfeed pump. Operator action over compensated and the unit tripped on high RCS pressure.

<sup>1</sup>  
 F: Forced  
 S: Scheduled

<sup>2</sup>  
 Reason:  
 A-Equipment Failure (Explain)  
 B-Maintenance or Test  
 C-Refueling  
 D-Regulatory Restriction  
 E-Operator Training & License Examination  
 F-Administrative  
 G-Operational Error (Explain)  
 H-Other (Explain)

<sup>3</sup>  
 Method:  
 1-Manual  
 2-Manual Scram.  
 3-Automatic Scram.  
 4-Other (Explain)

<sup>4</sup>  
 Exhibit G - Instructions for Preparation of Data Entry Sheets for Licensee Event Report (LER) File (NUREG-0161)

<sup>5</sup>  
 Exhibit I - Same Source

MONTHLY OPERATIONAL SUMMARY STATEMENT

DOCKET NO. 50-302

UNIT FLCRP-3

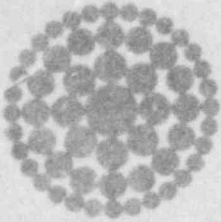
DATE 8/2/83

COMPLETED BY D. Fields

TELEPHONE (904) 795-6486

MONTH July 1983

**SUMMARY STATEMENT:** The unit was shutdown for a refueling outage until July 26. During startup two automatic scrams occurred due to problems with feedwater control. The unit is limited by Technical Specifications to 77% full power due to a failed seal on reactor coolant pump 1C.



**Florida  
Power**  
CORPORATION

*Aug*  
July 5, 1983  
3F-0883-04

Mr. Richard C. DeYoung, Director  
Office of Inspection and Enforcement  
U. S. Nuclear Regulatory Commission  
Attn: Document Control Desk  
Washington, D.C. 20555

Subject: Crystal River Unit 3  
Docket No. 50-302  
Operating License No. DPR-72  
Monthly Operating Report

Dear Mr. DeYoung:

Attached are twelve (12) copies of the Crystal River Unit 3, July 1983, Monthly Operating Report. This report is submitted in accordance with Technical Specification 6.9.1.6.

Sincerely,

Gary R. Westafer  
Manager  
Nuclear Licensing and Fuel Management

AEF:mm

cc: Mr. J. P. O'Reilly, Regional Administrator  
Office of Inspection & Enforcement  
U.S. Nuclear Regulatory Commission  
101 Marietta Street N.W., Suite 2900  
Atlanta, GA 30303

IE-24  
1/1