

JAN 23 1990

Docket Nos. 50-321, 50-366
License Nos. DPR-57, NPF-5

Georgia Power Company
ATTN: Mr. W. G. Hairston, III
Senior Vice President -
Nuclear Operations
P. O. Box 1295
Birmingham, AL 35201

Gentlemen:

SUBJECT: SYSTEMATIC ASSESSMENT OF LICENSEE PERFORMANCE - FINAL REPORT
(NRC INSPECTION REPORT NOS. 50-321/89-22 AND 50-366/89-22)

Thank you for your January 10, 1990, response to our December 5, 1989, Initial Systematic Assessment of Licensee Performance (SALP) Report. This report contained a periodic evaluation of your Hatch facility for the period of July 1, 1988, through September 30, 1989. The results of this report were discussed with you at a public meeting held at your Hatch facility on December 13, 1989.

We have reviewed your response and have determined that no formal changes to the Initial SALP Report are warranted; therefore, the December 5, 1989, report constitutes the Final SALP Report. No reply to this letter is required; however, should you have any questions concerning these matters, I will be pleased to discuss them with you.

Sincerely,

Original Signed by
Luis A. Reyes/for

Stewart D. Ebnetter
Regional Administrator

Enclosures:

1. SALP Presentation Meeting Summary
2. SALP Presentation Meeting Slides
3. Licensee Response dated January 10, 1990
4. Errata Packages

cc w/encls:

R. P. McDonald, Executive Vice
President, Nuclear Operations
Georgia Power Company
P. O. Box 1295
Birmingham, AL 35201

(cc w/encls cont'd - see page 2)

9002090201 900123
PDR ADOCK 05000321
Q FDC

IE40

JAN 23 1990

cc w/encls: Cont'd
J. T. Beckham
Vice President, Plant Hatch
Georgia Power Company
P. O. Box 1295
Birmingham, AL 35201

H. C. Nix
General Manager, Plant Hatch
Route 1, Box 439
Baxley, GA 31513

S. J. Bethay
Manager Licensing - Hatch
Georgia Power Company
P. O. Box 1295
Birmingham, AL 35201

Shaw, Pittman, Potts and
Trowbridge
2300 N Street, NW
Washington, D. C. 20037

Charles H. Badger
Office of Planning and Budget
Room 610
270 Washington Street, SW
Atlanta, GA 30334

J. Leonard Ledbetter, Director
Environmental Protection Division
Department of Natural Resources
205 Butler Street, SE, Suite 1252
Atlanta, GA 30334

Chairman
Appling County Commissioners
County Courthouse
Baxley, GA 31513

State of Georgia

bcc w/encls: (See page 3)

JAN 23 1990

bcc w/encls:

- K. M. Carr, Chairman
- T. M. Roberts, Commissioner
- F. J. Remick, Commissioner
- K. C. Rogers, Commissioner
- J. R. Curtiss, Commissioner
- J. M. Taylor, EDO
- H. L. Thompson, Jr., EDO
- R. W. Borchardt, Regional
Coordinator, EDO
- T. E. Murley, NRR
- S. Varga, NRR
- L. Crocker, NRR
- R. Nease, SALP Coordinator, NRR
- Regional Administrators, RI, RIII
RIV, and RV
- K. Clark, RII, PAO
- A. Herdt, DRP, RII
- K. Brockman, DRP, RII
- L. Trocine, DRP, RII
- K. Landis, Chief, TSS
- NRC Resident Inspector
- DRS and DRSS Branch Chiefs,
and Section Chiefs
- INPO
- IMPELL
- Document Control Desk

RII:DRP <i>for</i> JMenning 1/23/90	RII:DRP KBrockman 1/23/90	RII:DRP AHerd 1/23/90	RII:DRS EMerschhoff 1/23/90	RII:DRSS JStohr 1/23/90	HQ:NRR <i>per</i> LCrocker 1/23/90	HQ:NRR <i>per</i> DMatthews 1/23/90
RII:DRP CHehl 1/23/90	RII:ORA JMilhoan 1/ /90	<i>out of office</i>				

ENCLOSURE 1

MEETING SUMMARY

A. Summary

At 11:00 a.m., on December 13, 1989, a management meeting was conducted at the Hatch facility near Baxley, Georgia. This meeting was held at our request to discuss the results of our Systematic Assessment of Licensee Performance (SALP) evaluation of your Hatch facility for the appraisal period July 1, 1988, through September 30, 1989. The report documenting this assessment was sent to you on December 5, 1989.

B. Licensee Attendees

R. P. McDonald, Executive Vice President - Nuclear Operations
W. G. Hairston, III, Senior Vice President - Nuclear Operations
J. T. Beckham, Jr., Vice President - Plant Hatch
H. C. Nix, Jr., General Manager Nuclear - Plant Hatch
J. D. Heidt, Manager - Nuclear Engineering and Licensing
C. T. Moore, Assistant General Manager, Plant Support
H. L. Sumner, Jr., Assistant General Manager - Plant Operations
S. B. Tipps, Manager - Nuclear Safety and Compliance
P. E. Fornel, Manager - Maintenance

The list of licensee attendees above does not include a large number of Georgia Power Company employees that were present at the SALP presentation. The additional attendees included managers, supervisors, and various plant staff members. Representatives from the Oglethorpe Electric Membership Cooperative and the Georgia Public Service Commission were also present. This large turnout was beneficial to the SALP process and is highly recommended for future presentations. The free exchange of views during this meeting was also beneficial.

C. NRC Attendees

S. D. Ebnetter, Regional Administrator, Region II (RII)
C. W. Hehl, Deputy Director, Division of Reactor Projects (DRP), RII
A. R. Herdt, Director, Reactor Projects Branch 3, DRP, RII
D. B. Matthews, Director, Project Directorate II-3 (PDIII-3), Office of Nuclear Reactor Regulation (NRR)
J. E. Menning, Senior Resident Inspector, Plant Hatch, Reactor Projects Section 3B (RP3B), DRP, RII
R. A. Musser, Resident Inspector, Plant Hatch, RP3B, DRP, RII
L. P. Crocker, Project Manager, PDII-3, NRR
L. Trocine, Project Engineer, RP3B, DRP, RII

D. SALP Presentation Slides

Refer to Enclosure 2.

UNITED STATES

NUCLEAR REGULATORY

COMMISSION

SYSTEMATIC ASSESSMENT

OF

LICENSEE PERFORMANCE

(SALP)

GEORGIA POWER COMPANY

JULY 1, 1988 through SEPTEMBER 30, 1989

HATCH UNITS 1 AND 2

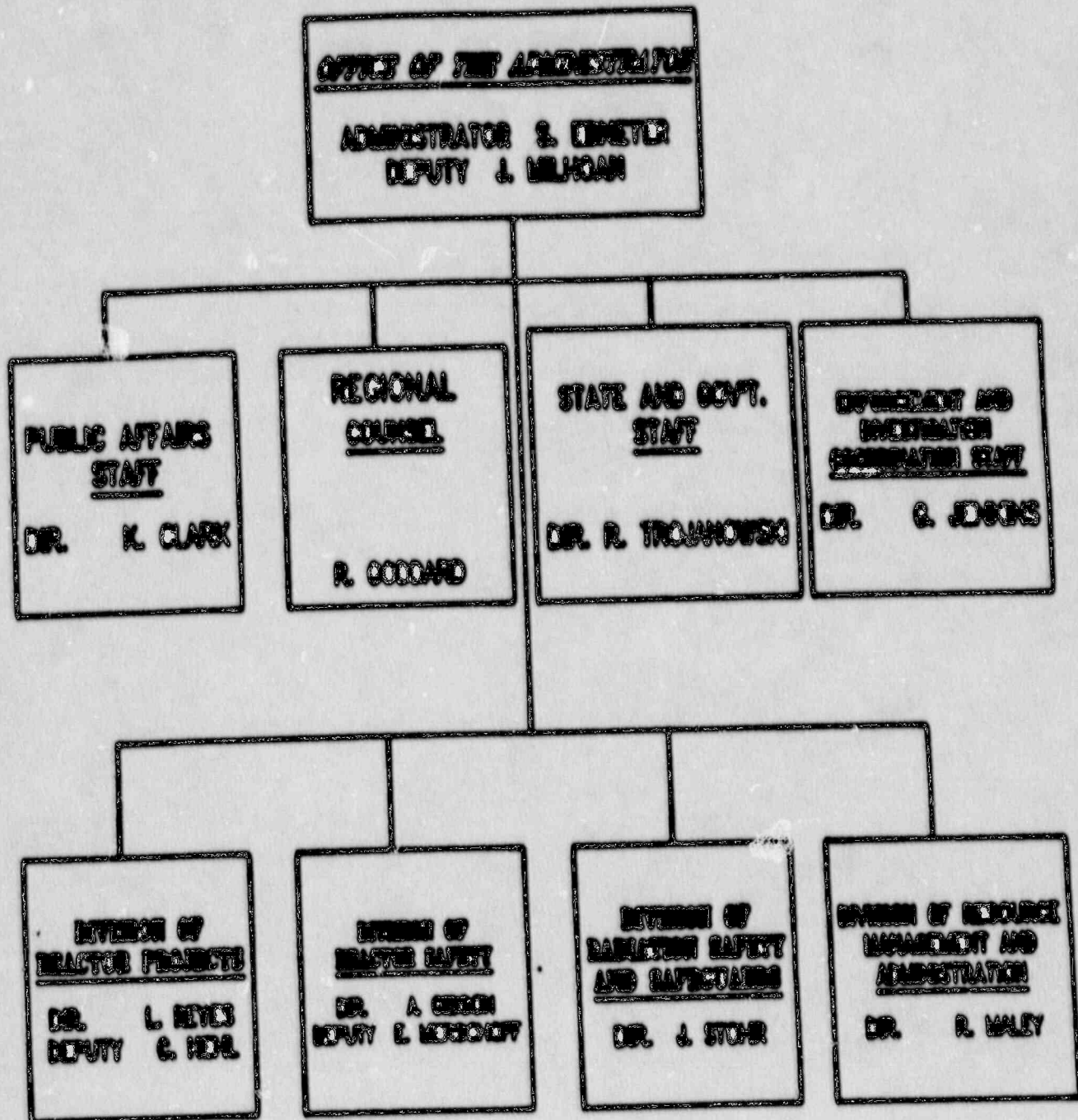
DECEMBER 13, 1989

BAXLEY , GEORGIA

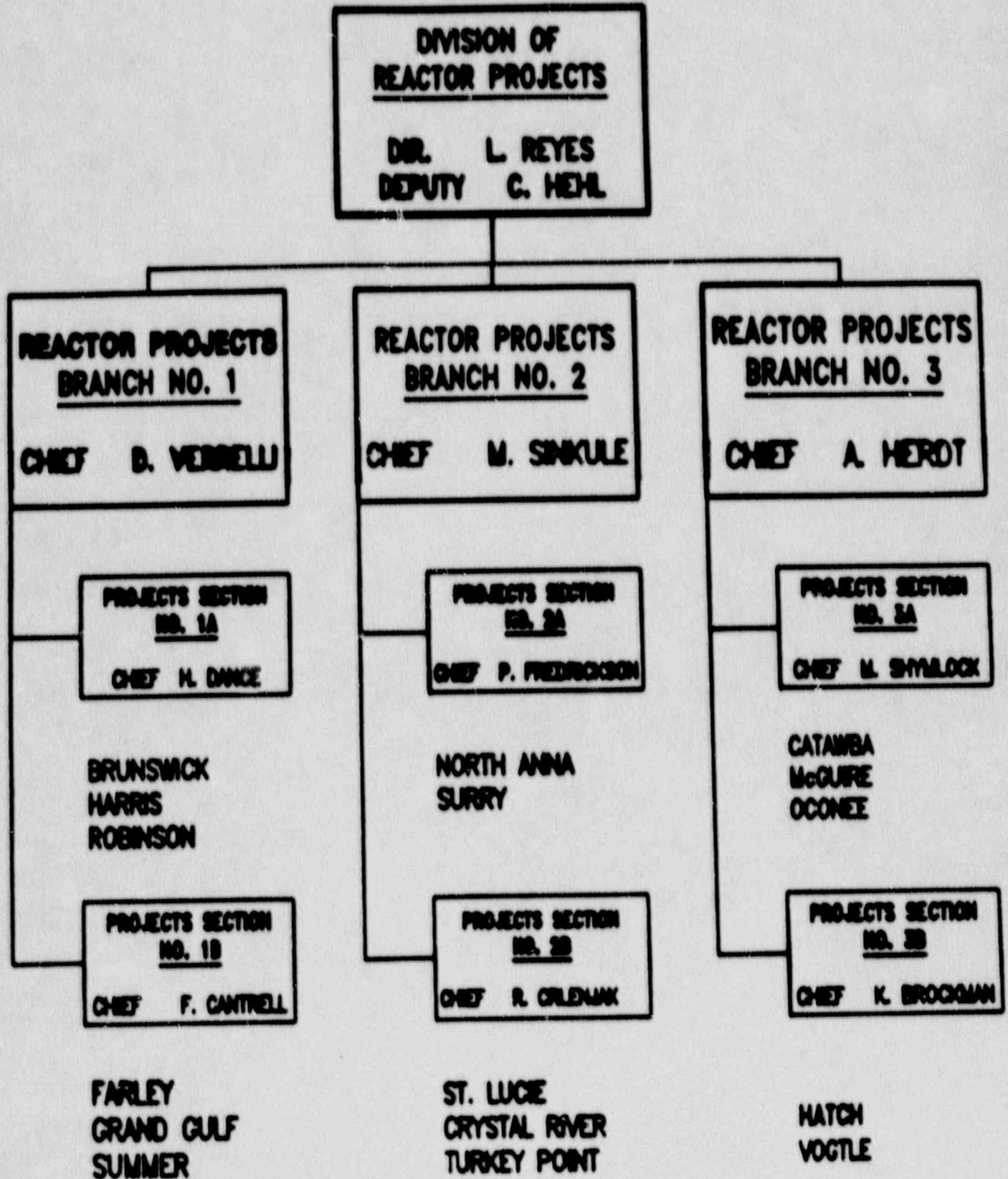
SALP PROGRAM OBJECTIVES

- 1. IDENTIFY TRENDS IN LICENSEE PERFORMANCE**
- 2. PROVIDE A BASIS FOR ALLOCATION
OF NRC RESOURCES**
- 3. IMPROVE NRC REGULATORY PROGRAM**

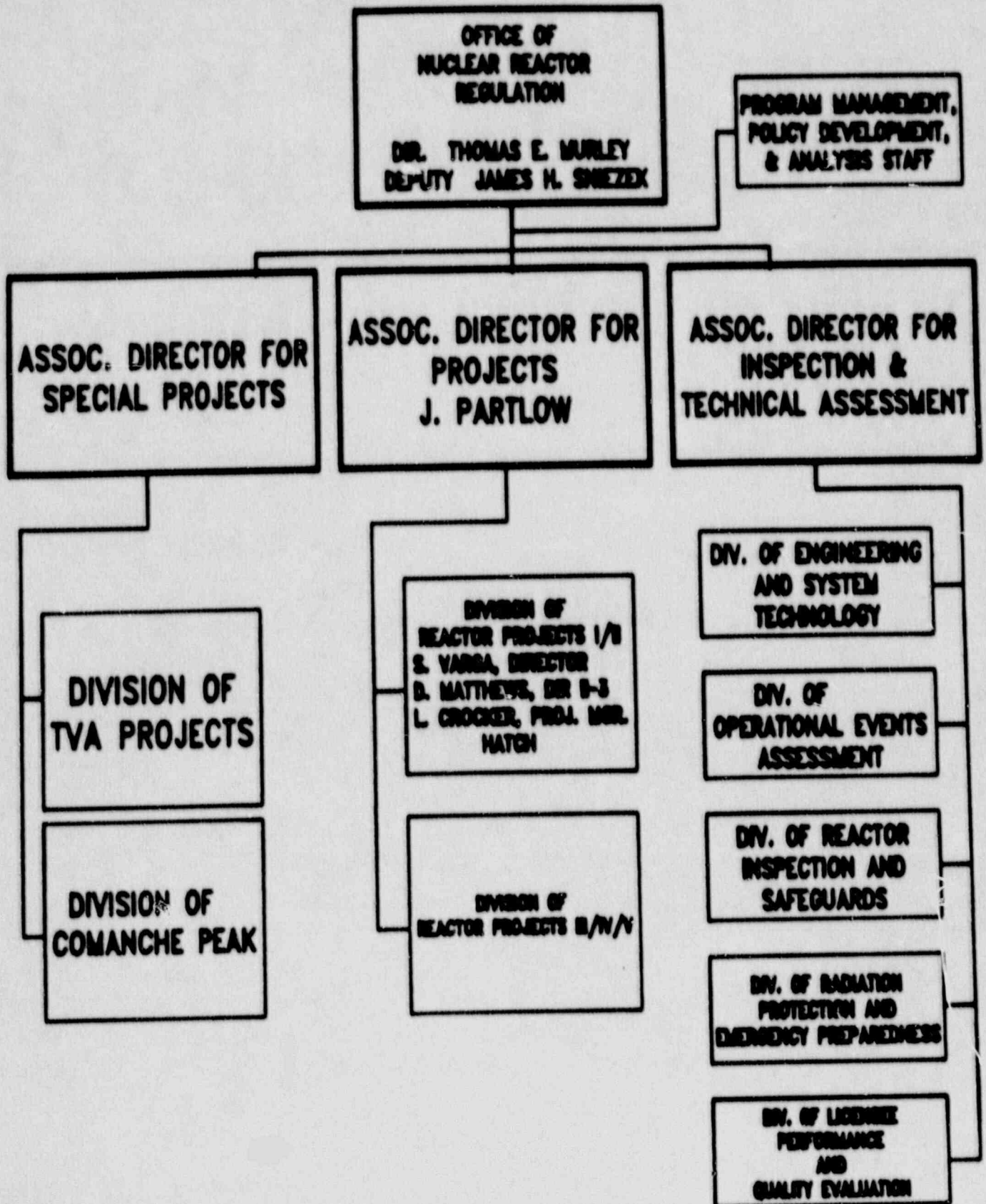
REGION II ORGANIZATION



DIVISION OF REACTOR PROJECTS ORGANIZATION



NRR ORGANIZATION



NRC
SALP PROGRAM
REVISIONS

MAJOR CHANGES TO THE SALP PROGRAM CONSIST OF...

- ◆ **Redefinition of Functional Areas**
- ◆ **Reduction in Number of Separate Functional Areas**
- ◆ **Two New Functional Areas**
 - : **Engineering/Technical Support**
 - : **Safety Assessment/Quality Verification**
- ◆ **Attributes Addressing Human Performance and Self-Assessment**
- ◆ **Emphasis on Analysis**

PERFORMANCE ANALYSIS AREAS

FOR OPERATING REACTORS

A. PLANT OPERATIONS

B. RADIOLOGICAL CONTROLS

C. MAINTENANCE / SURVEILLANCE

D. EMERGENCY PREPAREDNESS

E. SECURITY

F. ENGINEERING / TECHNICAL SUPPORT

G. SAFETY ASSESSMENT / QUALITY VERIFICATION

ENGINEERING/TECHNICAL SUPPORT

The purpose of this functional area is to address the adequacy of technical and engineering support for all plant activities. It includes all Licensee Activities associated with the design of plant modifications; engineering and technical support for operations, outages, maintenance, testing, surveillance, and procurement activities; training; and configuration management (including maintaining design bases and margins).

SAFETY ASSESSMENT/QUALITY VERIFICATION

The purpose of this functional area is to address the technical adequacy and completeness of the licensee's approach toward a variety of activities associated with the implementation of licensee safety policies and licensee activities related to amendment requests, exemption requests, relief requests, responses to generic letters, bulletins, and information notices and resolution of TMI items and other regulatory initiatives. It also includes licensee activities related to the resolution of safety issues, 10 CFR 50.59 reviews, 10 CFR 21 assessments, safety committee and self-assessment activities, analysis of industry's operational experience, root cause analyses of plant events, use of feedback from plant quality assurance/quality control (QA/QC) reviews, and participation in self-improvement programs. It includes the effectiveness of the licensee's quality verification function in identifying substandard or anomalous performance in monitoring the overall performance of the plant.

AREA PERFORMANCE

CATEGORY 1

LICENSEE MANAGEMENT ATTENTION AND INVOLVEMENT ARE READILY EVIDENT AND PLACE EMPHASIS ON SUPERIOR PERFORMANCE OF NUCLEAR SAFETY OR SAFEGUARDS ACTIVITIES, WITH THE RESULTING PERFORMANCE SUBSTANTIALLY EXCEEDING REGULATORY REQUIREMENTS. LICENSEE RESOURCES ARE AMPLE AND EFFECTIVELY USED SO THAT A HIGH LEVEL OF PLANT AND PERSONNEL PERFORMANCE IS BEING ACHIEVED. REDUCED NRC ATTENTION MAY BE APPROPRIATE.

AREA PERFORMANCE

CATEGORY 2

LICENSEE MANAGEMENT ATTENTION AND INVOLVEMENT
IN THE PERFORMANCE OF NUCLEAR SAFETY OR SAFEGUARDS
ACTIVITIES ARE GOOD. THE LICENSEE HAS ATTAINED A
LEVEL OF PERFORMANCE ABOVE THAT NEEDED TO MEET
REGULATORY REQUIREMENTS. LICENSEE RESOURCES ARE
ADEQUATE AND REASONABLY ALLOCATED SO THAT GOOD PLANT
AND PERSONNEL PERFORMANCE IS BEING ACHIEVED. NRC
ATTENTION MAY BE MAINTAINED AT NORMAL LEVELS.

AREA PERFORMANCE

CATEGORY 3

LICENSEE MANAGEMENT ATTENTION AND INVOLVEMENT
IN THE PERFORMANCE OF NUCLEAR SAFETY OR SAFEGUARDS
ACTIVITIES ARE NOT SUFFICIENT. THE LICENSEE'S
PERFORMANCE DOES NOT SIGNIFICANTLY EXCEED THAT NEEDED
TO MEET MINIMAL REGULATORY REQUIREMENTS. LICENSEE
RESOURCES APPEAR TO BE STRAINED OR NOT EFFECTIVELY
USED. NRC ATTENTION SHOULD BE INCREASED ABOVE
NORMAL LEVELS.

EVALUATION CRITERIA

1. MANAGEMENT INVOLVEMENT IN ASSURING QUALITY
2. APPROACH TO THE IDENTIFICATION AND RESOLUTION OF TECHNICAL ISSUES FROM A SAFETY STANDPOINT
3. RESPONSIVENESS TO NRC INITIATIVES
4. ENFORCEMENT HISTORY
5. REPORTING AND ANALYSIS OF REPORTABLE EVENTS
6. STAFFING (INCLUDING MANAGEMENT)
7. TRAINING EFFECTIVENESS AND QUALIFICATION

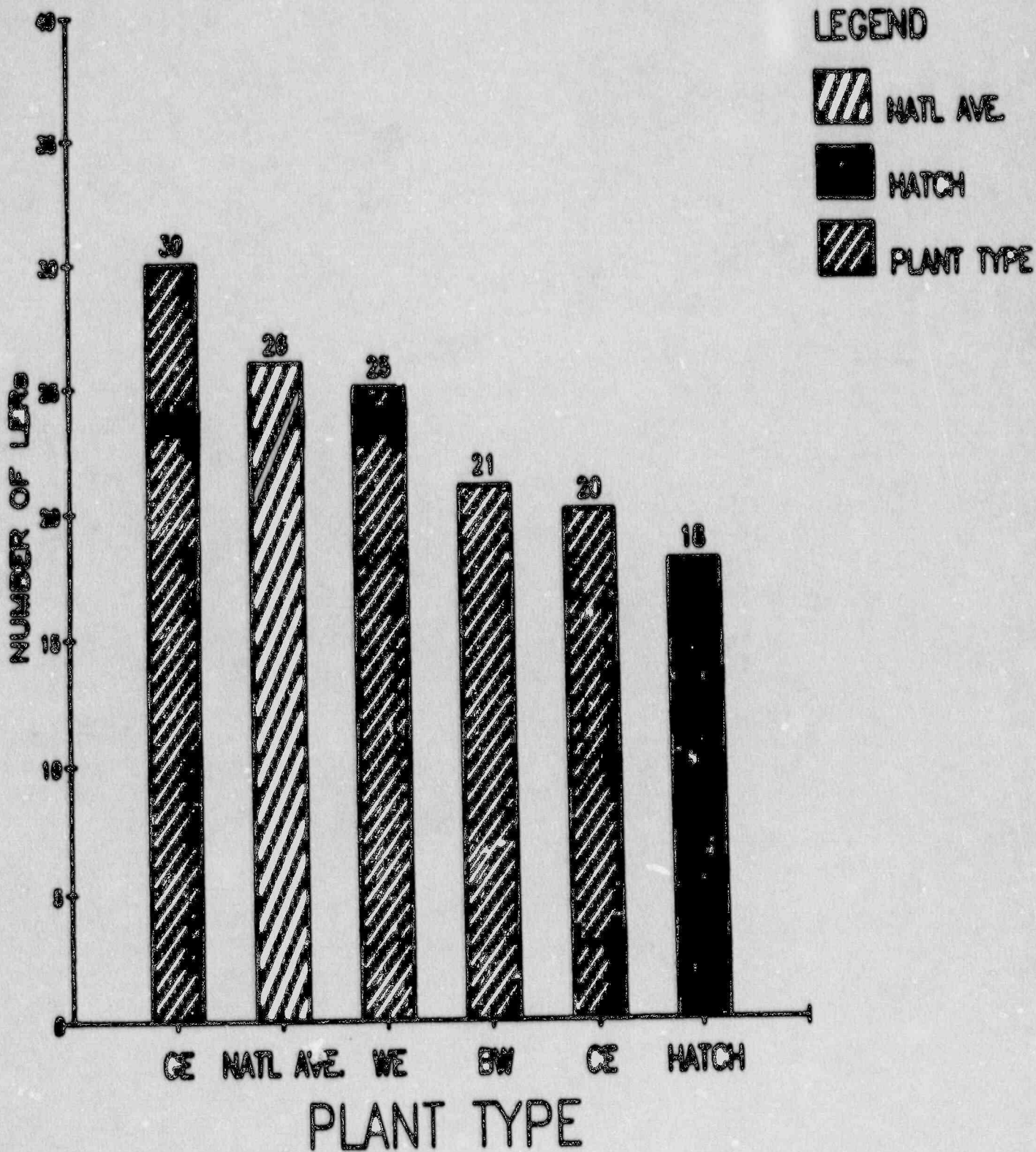
VIOLATION SUMMARY

JULY 01, 1988 through SEPTEMBER 30, 1989

	I	II	III	IV	V
HATCH 1	0	0	0	15	2
HATCH 2	0	0	0	13	1
REGION II AVE.	0	0	2	15	4
PER UNIT					

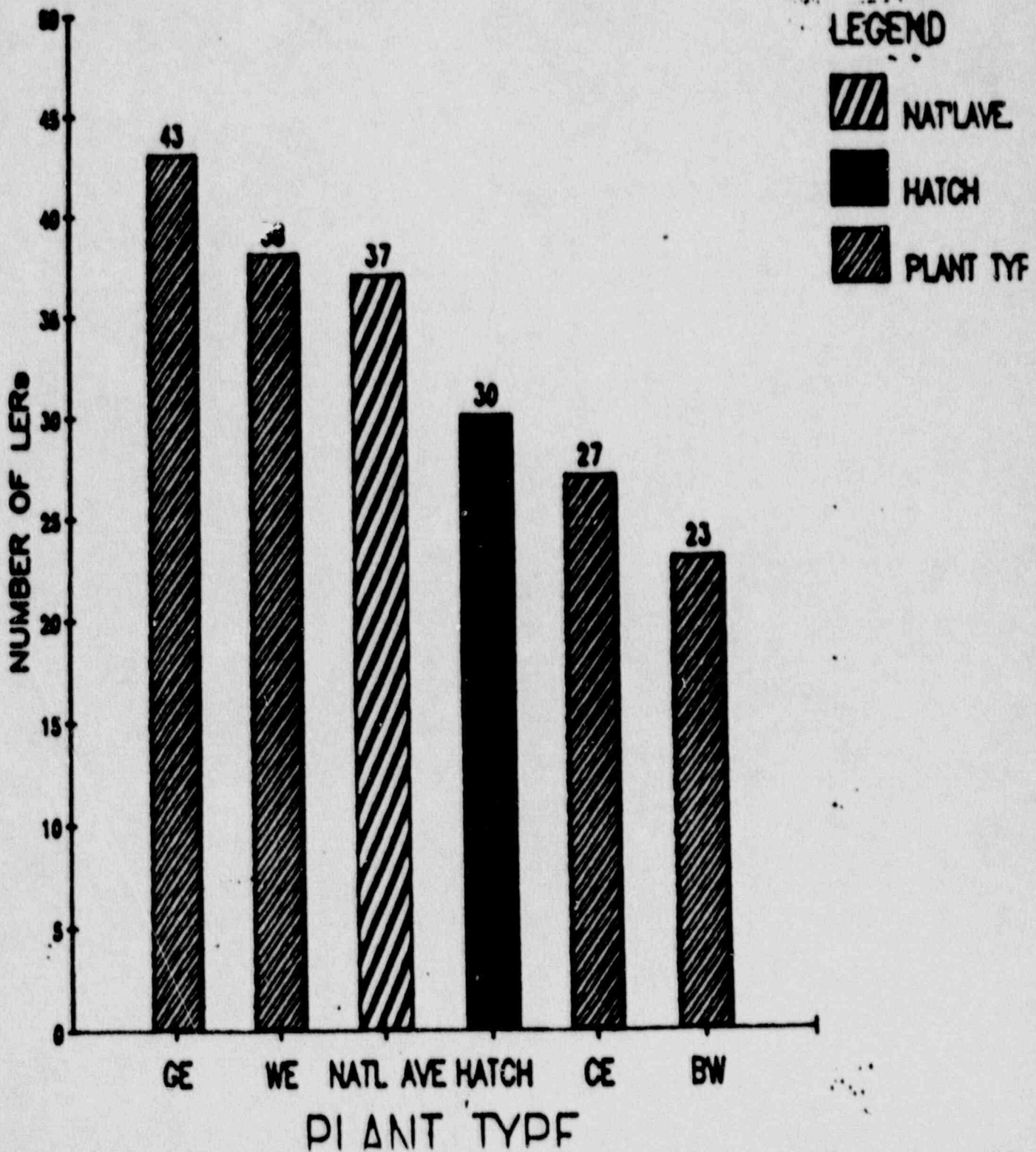
LERs PER UNIT

JULY 1, 1988 through SEPTEMBER 30, 1989



LEERS PER UNIT

JANUARY 1, 1987 through JUNE 30, 1988



HATCH LERs

JULY 1, 1988 through SEPTEMBER 30, 1989

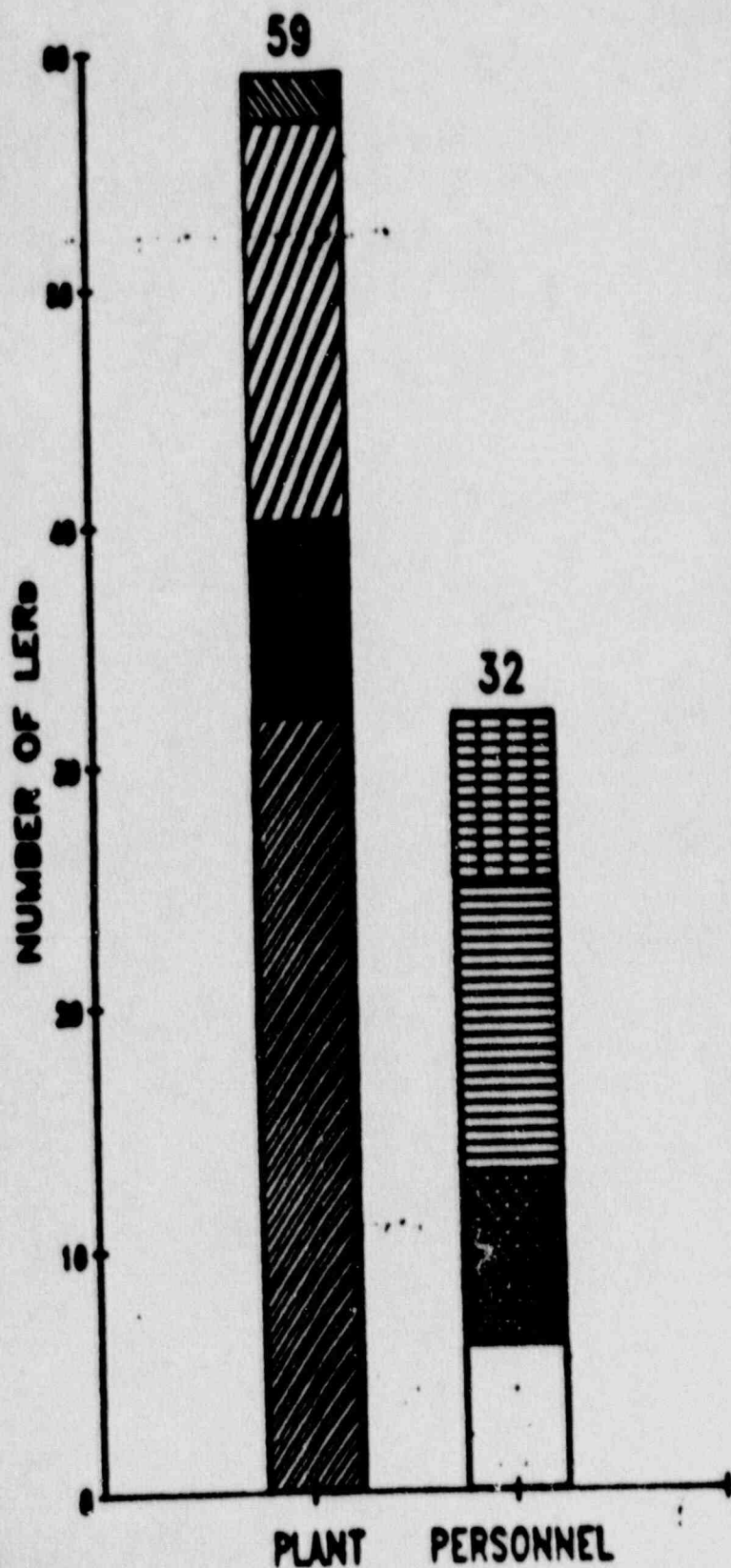


LEGEND









- PERSONNEL (other) = 4
- PERSONNEL (test/cal) = 8
- PERSONNEL (maintenance) = 4
- PERSONNEL (operating) = 5
- OTHER = 2
- COMPONENT FAILURE = 8
- DESIGN / CONST. = 4
- PERSONNEL (total) = 21

HATCH LERs

JANUARY 1, 1987 through JUNE 30, 1988



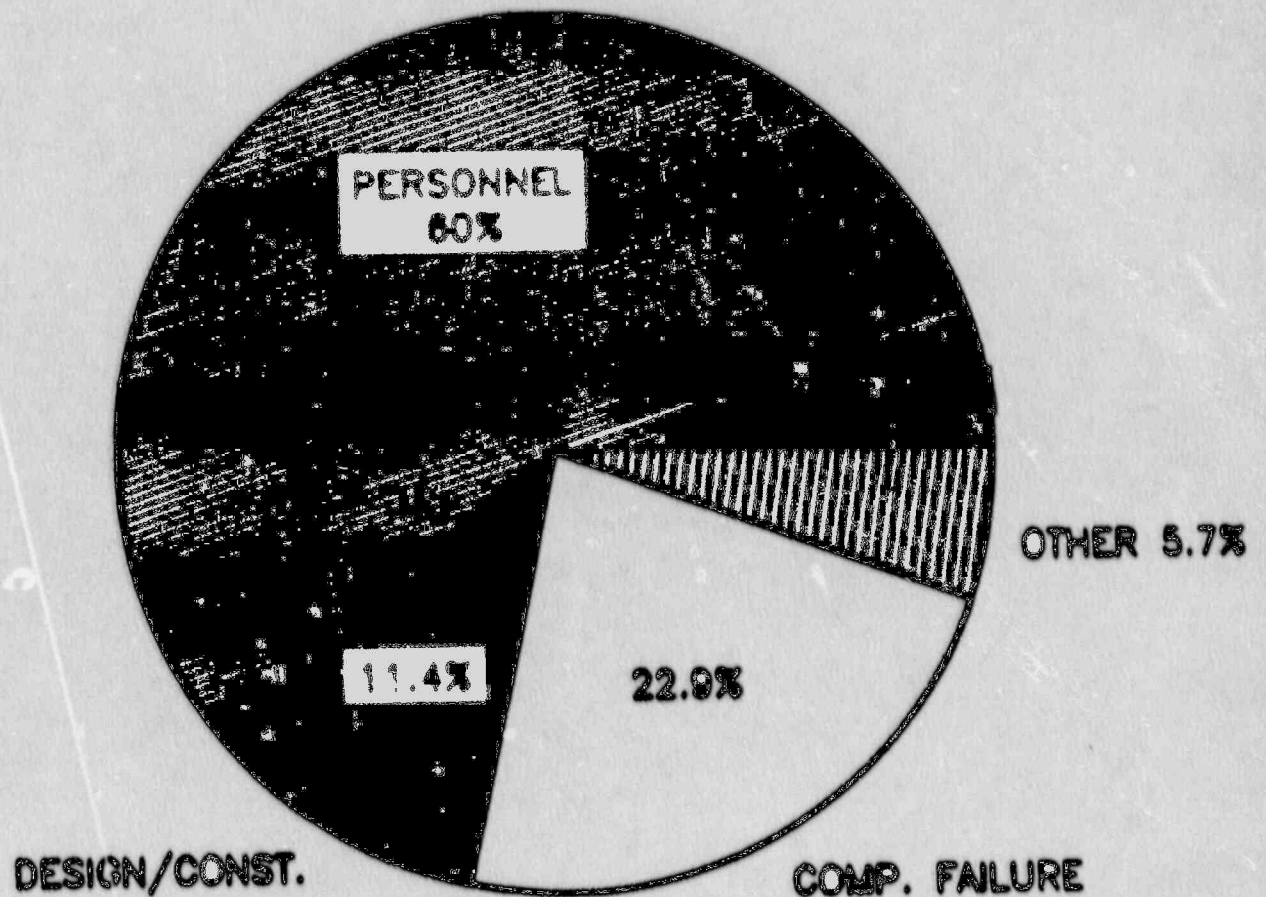
LEGEND

-  PERSONNEL (other) = 7
-  PERSONNEL (test/cal) = 12
-  PERSONNEL (maintenance) = 7
-  PERSONNEL (operating) = 6
-  OTHER = 2
-  COMPONENT FAILURE = 17
-  DESIGN / CONST. = 8
-  PERSONNEL (total) = 32

HATCH LERs

(PLANT)

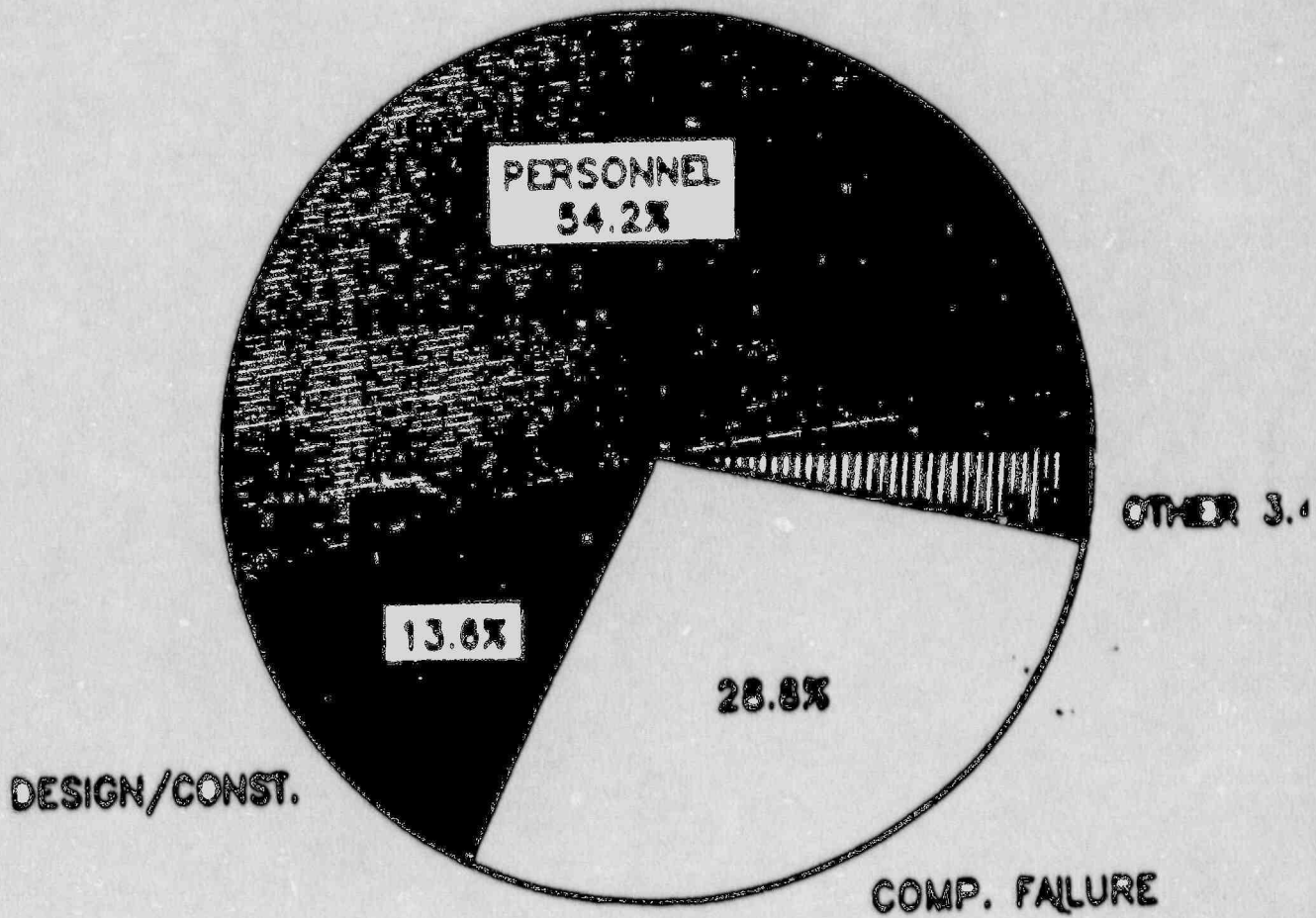
JULY 1, 1988 through SEPTEMBER 30, 1989



HATCH LERS

(PLANT)

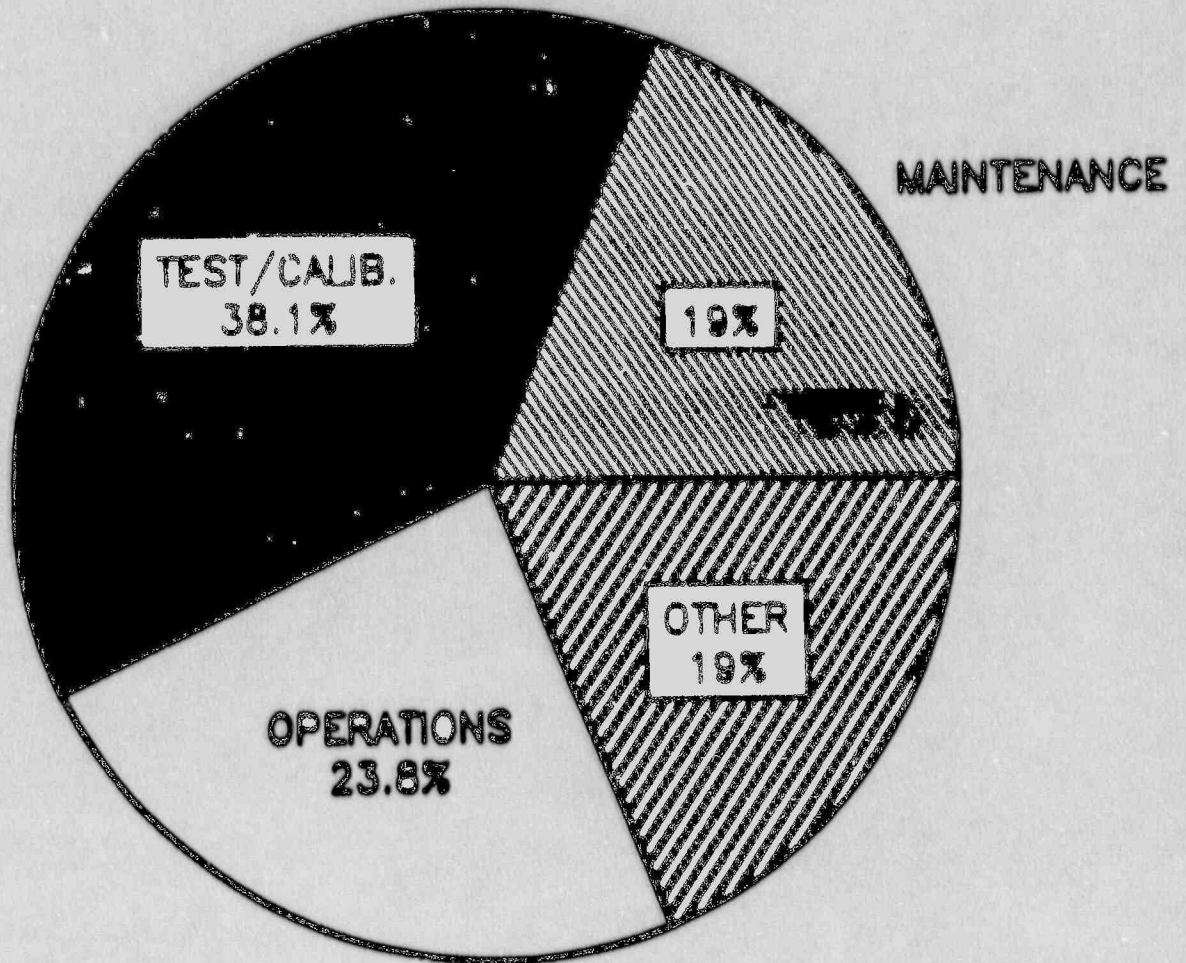
JANUARY 1, 1987 through JUNE 30, 1988



HATCH LERs

(PERSONNEL)

JULY 1, 1988 through SEPTEMBER 30, 1989

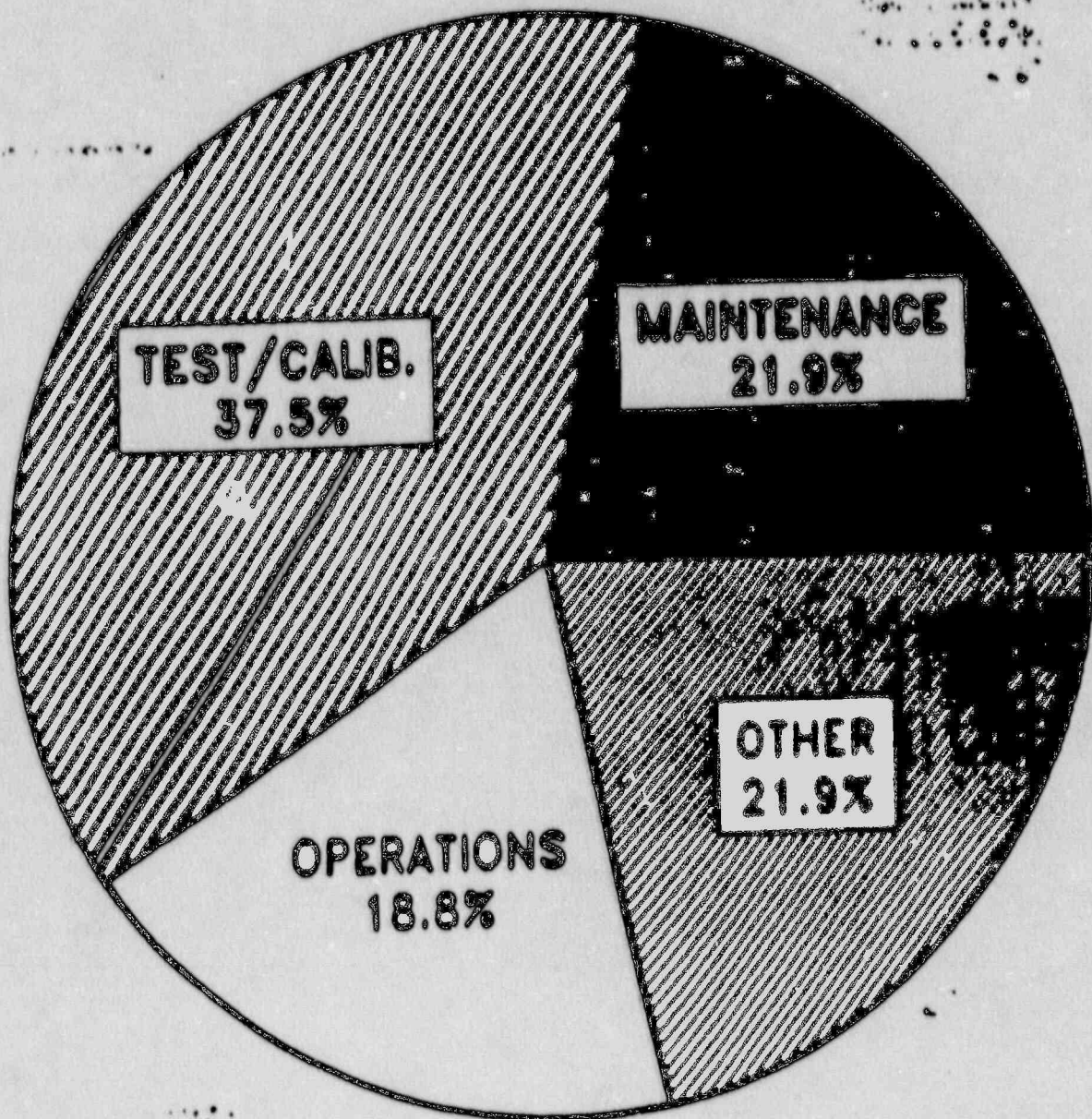


PERSONNEL

HATCH LERS

(PERSONNEL)

JANUARY 1, 1987 through JUNE 30, 1988



PERSONNEL

OPERATIONS-CATEGORY 1

- HIGH PLANT AVAILABILITY
- REDUCTION IN SAFETY SYSTEM CHALLENGES
- HIGH DEGREE OF MANAGEMENT INVOLVEMENT
- OPERATOR ATTENTIVENESS AND PROFESSIONALISM
- IMPROVED HOUSEKEEPING PRACTICES
- EFFECTIVE FIRE BRIGADE TRAINING
- IMPROVED LICENSED OPERATOR TRAINING
- EOP UTILIZATION DIFFICULTIES

RADIOLOGICAL CONTROLS-CATEGORY 2

- INCREASED MANAGEMENT ATTENTION
- GET IMPROVED
- GENERALLY, QA AUDITS WERE EFFECTIVE
- FEWER PERSONNEL CONTAMINATION EVENTS
- CONTAMINATED SPACE MAINTAINED LOW
- NRC ALARA PROGRAM CONCERNS

MAINTENANCE/SURVEILLANCE-CATEGORY 1

- IMPROVED PREVENTIVE MAINTENANCE PRACTICES
- EFFECTIVE "SKILLS" TRAINING PROGRAM
- "HOT" AND "CLEAN" SHOP FACILITIES
- CONTROL OF MAINTENANCE BACKLOG
- EXPANDED PREDICTIVE MAINTENANCE PROGRAM
- DETAIL IN SELECTED MAINTENANCE PROCEDURES REQUIRES IMPROVEMENT
- EFFECTIVE SURVEILLANCE PROGRAM

EMERGENCY PREPAREDNESS-CATEGORY 1

- STRONG MANAGEMENT ATTENTION EVIDENT
- EFFECTIVE IN IMPLEMENTING THE EMERGENCY PLAN
- TRAINING PROGRAM IMPROVED
- AUDITS AND CRITIQUES WERE DETAILED AND COMPREHENSIVE
- EFFECTIVE COMMAND AND CONTROL FUNCTIONS DISPLAYED
- MINOR DEFICIENCIES

SECURITY AND SAFEGUARDS-CATEGORY 2(I)

- INNOVATIVE AND EFFECTIVE TRAINING PROGRAM
- IMPROVED FACILITIES
- NEW COMMUNICATIONS CAPABILITIES
- NEED FOR INCREASED REGULATORY SENSITIVITY
- NEED TO ALLEVIATE LONG TERM COMPENSATORY ACTION
- INCREASED REGULATORY VIOLATIONS

ENGINEERING/TECHNICAL SUPPORT-CATEGORY 2(1)

- DESIGN CHANGES THOROUGH AND COMPLETE
- REDUCTION IN BACKLOG OF DESIGN CHANGES AND ENGINEERING ASSISTANCE REQUESTS
- ACCELERATED COMPLETION OF PROCEDURE UPGRADE PROGRAM
- CONCERN WITH DESIGN BASIS INFORMATION
- INADEQUATE CONTROL OF NDE AND WELDING PROCESSES

SAFETY ASSESSMENT/QUALITY VERIFICATION-CATEGORY 1

- MANAGEMENT INVOLVEMENT EVIDENT
- PLANT REVIEW BOARD EFFECTIVE
- EFFECTIVE PROBLEM IDENTIFICATION PROGRAM (DCs)
- SPECIALIZED PROBLEM SOLVING TRAINING
- EFFECTIVE SELF ASSESSMENT PROGRAMS

SUMMARY OF RESULTS

- OVERALL PERFORMANCE WAS VERY GOOD
- MANAGEMENT INVOLVEMENT WAS EVIDENT THROUGHOUT
- OPERATIONS PERFORMANCE AND PHYSICAL CONDITION OF PLANT CONTINUED TO BE A STRENGTH
- FIRE PROTECTION PROGRAM WAS MANAGED EFFECTIVELY
- HEALTH PHYSICS PERFORMANCE WAS GOOD, EXCLUDING ALARA CONCERNS
- MAINTENANCE ORGANIZATION EFFECTIVELY SUPPORTED PLANT OPERATIONS
- IMPLEMENTATION OF EMERGENCY PREPAREDNESS PROGRAM WAS GOOD
- SECURITY AND SAFEGUARDS AREA WAS EFFECTIVELY IMPLEMENTED
- ENGINEERING AND TECHNICAL SUPPORT WERE GOOD, EXCEPTING CONTROL OF NDE AND WELDING
- SAFETY ASSESSMENT AND QUALITY VERIFICATION PERFORMANCE WAS A STRENGTH

Georgia Power Company
330 Peachtree Avenue
Atlanta, Georgia 30308
Telephone: 404-521-4100

ENCLOSURE 3

Mail Stop 6
4000 Wilson Center Parkway
Post Office Box 1204
Washington, D.C. 20555
Telephone: 202-388-1000

W. G. Hairston, III
Secretary for the Chairman
Nuclear Regulatory Commission

HL-013
000116

January 10, 1990

U.S. Nuclear Regulatory Commission
ATTN: Document Control Desk
Washington, D.C. 20555

PLANT HATCH - UNITS 1, 2
NRC DOCKETS 80-321, 80-366
OPERATING LICENSES DPR-87, NPF-5
RESPONSE TO SYSTEMATIC
ASSESSMENT OF LICENSEE PERFORMANCE

Gentlemen:

Georgia Power Company received NRC Inspection Report Nos. 80-321/89-22 and 80-366/89-22 (Systematic Assessment of Licensee Performance) dated December 8, 1989 and met with your staff concerning these reports on December 19, 1989. Georgia Power Company has no comments concerning the reports.

Sincerely,

James J. Sullivan
for W. G. Hairston, III

JCJ/eb
000117

c: Georgia Power Company
Mr. W. C. Nix, General Manager - Nuclear Plant
Mr. J. D. Meidt, Manager Engineering and Licensing - Hatch
80-NORMS

U.S. Nuclear Regulatory Commission, Washington, D.C.
Mr. L. P. Crocker, Licensing Project Manager - Hatch

U.S. Nuclear Regulatory Commission, Region II
Mr. S. D. Ebnetter, Regional Administrator
Mr. J. E. Manning, Senior Resident Inspector - Hatch

90 01190410 LP

ENCLOSURE 4

ERRATA PACKAGE FOR THE FINAL SALP REPORT

<u>Page</u>	<u>Line</u>	<u>Initial Report Reads</u>	<u>Final Report Reads</u>
Coversheet of SALP Report	2	Initial SALP Report	Final SALP Report



UNITED STATES
NUCLEAR REGULATORY COMMISSION
REGION II
101 MARIETTA STREET, N.W.
ATLANTA, GEORGIA 30323

Docket Nos. 50-424, 50-425
License Nos. NPF-68, NPF-81

Georgia Power Company
ATTN: Mr. W. G. Hairston, III
Senior Vice President -
Nuclear Operations
P. O. Box 1295
Birmingham, AL 35201

Gentlemen:

SUBJECT: SYSTEMATIC ASSESSMENT OF LICENSEE PERFORMANCE
(NRC INSPECTION REPORT NOS. 50-424/89-26 AND 50-425/89-30)

The Nuclear Regulatory Commission (NRC) Systematic Assessment of Licensee Performance (SALP) Board has completed its periodic evaluation of your Vogtle facility for the period October 1, 1988, through September 30, 1989. The results of this evaluation are documented in the enclosed SALP Report. This report will be discussed with you at a public meeting to be held at your Vogtle facility in Waynesboro, Georgia, on December 14, 1989, at 10:00 a.m.

The performance of your Vogtle facility was evaluated in the functional areas of plant operations, radiological controls, maintenance/surveillance, emergency preparedness, security and safeguards, engineering/technical support, safety assessment/quality verification, preoperational testing, and startup testing. Although the functional areas evaluated during this assessment period are not identical to those evaluated in the previous period, a close correlation can be made for identifying changes in performance.

Although improvements in the level of performance in some specific areas were identified, the composite of the ratings attained over all of the functional areas assessed during this SALP period was comparable to the composite of those attained during the last SALP period. Lessons learned during startup and early operation of Unit 1 were effectively applied to Unit 2 activities. Professionalism in the control room was a strength and management support for operations was strong. Improvements were noted in the areas of maintenance/surveillance and radiological controls. Further improvements in radiological controls are expected as the plant staff gains experience. Although the Security Program, as defined on paper, is sound, implementation deficiencies have caused declining performance in this area. A decline of performance in the emergency preparedness area was also noted. The decline in this area is attributed to the loss of command control and the failure to make a timely General Emergency declaration during your exercise. As discussed in the previous SALP, improvement in communications between management and the NRC residents was needed. Progress has been made in this area; however, communication channels need to be further nurtured. Attention to detail within the plant staff was also a source of performance short-comings. Increased management attention is warranted in this area.

90010 80174 ZAP

Any comments you have concerning our evaluation of the performance of your facility should be submitted to this office within 30 days following the date of our meeting. These comments will be considered in the development of the Final SALP Report. Your comments, a summary of our meeting, and my disposition of your comments will be issued as appendices to the Final SALP Report.

Should you have any questions concerning this letter, we will be glad to discuss them with you.

Sincerely,

Stewart D. Ebnetter
Regional Administrator

Enclosure:
Initial SALP Report - Vogtle

cc w/encl:
R. P. McDonald
Executive Vice President-Nuclear
Operations
Georgia Power Company
P. O. Box 1295
Birmingham, AL 35201

C. K. McCoy
Vice President-Nuclear
Georgia Power Company
P. O. 1295
Birmingham, AL 35201

G. Bockhold, Jr.
General Manager, Nuclear Operations
Georgia Power Company
P. O. 1600
Waynesboro, GA 30830

J. A. Bailey
Manager-Licensing
Georgia Power Company
P. O. Box 1295
Birmingham, AL 35201

B. W. Churchill, Esquire
Shaw, Pittman, Potts, and Trowbridge
2300 N Street, NW
Washington, D. C. 20037

(cc w/encl cont'd - see page 3)