

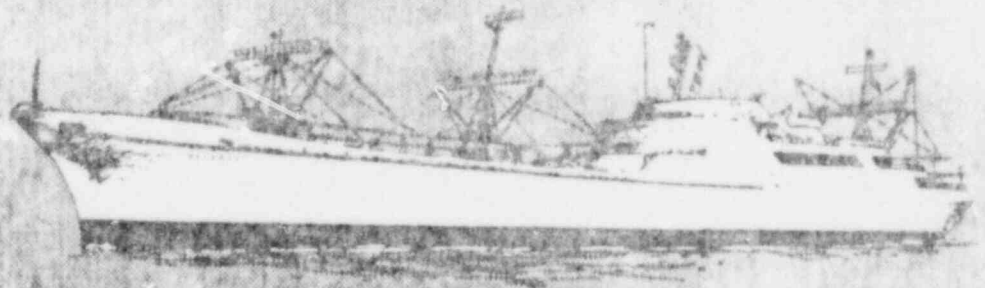
MASTS-104

June 1981



# N. S. Savannah

## Port Operating Plan for Port of Charleston, S.C.



B108030414 B10729  
PDR ADOCK 05000238  
PDR  
P

MASTS-104

N.S. SAVANNAH  
PORT OPERATING PLAN  
FOR  
PORT OF CHARLESTON, SOUTH CAROLINA

MARITIME ADMINISTRATION  
U.S. DEPARTMENT OF COMMERCE

June 1981

## TABLE OF CONTENTS

	<u>Page</u>
1. INTRODUCTION.....	1
2. GENERAL CONSIDERATIONS.....	2
2.1 Location and General Description of Port.....	2
2.2 Port Administration and Services.....	3
2.2.1 U.S. Coast Guard.....	3
2.2.2 Tug Service.....	4
2.2.3 Pilot Service (no longer applicable).....	4
2.2.4 Police Services (no longer applicable).....	5
2.2.5 Fire Department Services.....	5
2.2.6 Telephone Service.....	6
2.2.7 Security.....	6
3. TRANSIT OPERATIONS.....	7
3.1 Health Physics Coverage During Transit.....	7
3.2 Transit Summary.....	7
4. BERTH.....	8
5. EMERGENCY PLANS.....	8
5.1 Radiological Emergency.....	8
5.2 Fire Fighting Support.....	8
Location of Patriots Point - Charleston Harbor.....	9
Master Plan - Patriots Point Naval and Maritime Museum.....	10

## 1. INTRODUCTION

The N.S. SAVANNAH is in a state of protective storage. Certain areas of the vessel will be open to the public as a Maritime Museum. All fuel assemblies, radioactive fluids, demineralizer resins and contaminated trash have been removed from the ship. The main reduction gears were removed in 1980 and the vessel is no longer capable of moving under its own power.

Adequate radiation monitoring, environmental surveillance, access control and security procedures will be established under the possession-only license to ensure that the health and safety of the employees, visitors and the public is not endangered.

## 2. GENERAL CONSIDERATIONS

The following information describes the berth characteristics and the administrative, operational, and emergency port information considered necessary to provide systematic safekeeping from industrial hazards and protection of the public from radioactive materials aboard the ship.

Site descriptions are given later in this report.

### 2.1 LOCATION AND GENERAL DESCRIPTION OF PORT

The Port of Charleston is approximately 8 miles from the sea buoy and the Cooper River is dredged to provide a channel. Charleston is South Carolina's largest port, and second largest city. The 1970 metropolitan population is approximately 260,000. The elevation of the city is 25 feet above sea level.

Navigation in the port and approaches is unhindered by natural or man-made obstructions. The dredged channel widths are 1,000 feet on the lower reaches, reducing to 600 and 400 feet in the upper reaches with a Mean Low Water (MLW) depth of 35 feet. From the junction of the Cooper/Wando Rivers near Drum Island Reach, a MLW depth of 20 feet is available in the Wando River and upstream to the berthing area at Detyens Shipyard.

Mean tidal range at Charleston is about 5 feet; velocity of ebb current is about 1.5 to 2 knots in the rivers.

The prevailing winds in the Charleston area are southerly in spring and summer and northerly during the fall and winter seasons.

## 2.2 PORT ADMINISTRATION AND SERVICES

The Port of Charleston is operated by the South Carolina State Ports Authority, a public corporate agency of the State of South Carolina. This authority is administered by a board of 7 members appointed by the Governor. The function of the authority is to supervise the State docks and port facilities.

South Carolina State Ports Authority

176 Concord Street

P. O. Box 817, Charleston, S. C. 29402

Telephone: 723-8651

### 2.2.1 U.S. Coast Guard

The Coast Guard has six craft operational in the Charleston area. When not on patrol, these boats are berthed at the USCG Base at 196 Tradd Street on the east side of the Ashley River.

The craft monitor AM radio phone 2182 kc, for initial contact, then work frequency 2670 kc. Further communication

can be worked with VHF Channels 16 and 23 as agreed upon in initial contact.

Charleston Captain of the Port - CAPT. R. F. Bennett, USCG

196 Tradd Street

Charleston, S. C. 29402

24-hour Duty Phone:

724-4218

#### 2.2.2 Tug Service

The contracted towing company will be responsible for providing sufficient assisting tugs during transit, maneuvering, docking and undocking.

#### 2.2.3 Pilot Service (no longer applicable)

~~Pilot service for navigation into and out of the Port of Charleston will be provided by the Charleston Branch Pilote Association. In an emergency requiring the ship's removal from berth, a pilot, if needed, will board within 30 minutes after call to the Association dispatcher.~~

~~Inbound, the vessel will be met by a pilot in the vicinity of Sea Buoy 2c (see Figure 1). The pilot boats have voice radio communication on 2738 kc and 2182 kc, also VHF Channels 6, 13, 16, and 18A.~~

~~Charleston Branch Pilots Association~~

~~Capt. P. S. Poulinot~~

~~2 North Adger's Wharf~~

~~Charleston, South Carolina~~

~~24-hour Dispatch Phone: 577-6695~~

#### 2.2.4 Police Services (no longer applicable)

~~The Charleston County Police Department will avail their services while the SAVANNAH is in port for topside deactivation work. In an emergency and if called on by the Detention Security Supervisor, they will assist in evacuating all persons from the berth area.~~

#### 2.2.5 Fire Department Services

The Mt. Pleasant Fire Department is well equipped to handle fire-fighting requirements at Patriots Point and will respond to a fire call if notified. In case of an incident, the necessary equipment will be dispatched to the N. S. SAVANNAH.

Mt. Pleasant Fire Department

Chief Cyrus Pye

Mt. Pleasant Fire Dept., Sta. 2

Mt. Pleasant, South Carolina 29464

24-hour Emergency Phone: 884-4155



#### 2.2.6 Telephone Service

The Patriots Point Development Authority, will provide for installation of business phones while the ship is located at Patriots Point Naval and Maritime Museum.

#### 2.2.7 Security

Physical security of the vessel is under control of the Executive Director, Patriots Point Development Authority. All areas of the vessel not opened for general access of the public shall be protected by physical barriers, locked or chain-locked doors, and false bulkheads.

After normal hours, the pier shall be secured utilizing electrically controlled gates operated by a security guard. Security personnel shall patrol and visually inspect the vessel at the close of each day, and physically secure entrances and exits to all spaces. The security personnel shall also patrol and inspect the vessel at least once each shift.

### 3. TRANSIT OPERATIONS

The N.S. SAVANNAH is presently berthed at the TC Dock at the U. S. Army Storage Activity located on the Cooper River at Goose Creek. When directed, the contractor is to furnish tugs, pilots and line handlers to shift the vessel "DEAD SHIPS" from its present berth downriver to Patriots Point and secure in place for final delivery to the Patriots Point Development Authority for use in the Maritime Museum.

#### 3.1 HEALTH PHYSICS COVERAGE DURING TRANSIT

A qualified health physicist will be aboard the vessel during the transit downriver. He will serve as the Radiation Safety Officer.

Emory F. Williams, Director

Radiation Safety Services

Selwood, Inc.

P.O. Box 865, Irmo, SC 29063

Telephone: 781-4934

#### 3.2 TRANSIT SUMMARY

During the 10 mile transit down the Cooper River from Goose Creek, the N.S. SAVANNAH moving by tugs, will pass the U. S. Naval Shipyard and the U. S. Naval Station, pass under the Cooper River Bridges and be moved into its berth at the Patriots Point pier near the stern of the USS YORKTOWN.

#### 4. BERTH

The vessel will be "permanently moored" and utilize standard mooring lines and steel wire cables to breasting/mooring platforms and concrete pile dolphins on the bow and stern designed to withstand any anticipated hurricane force winds or tidal surges.

Due to the relatively shallow depth, and the silting probability of her berth, sinking of the vessel is not likely. However, in the event of flooding, portable pumps are on hand. In the event of major flooding, equipment from the U.S. Coast Guard and U.S. Naval Base facilities in Charleston are available.

#### 5. EMERGENCY PLANS

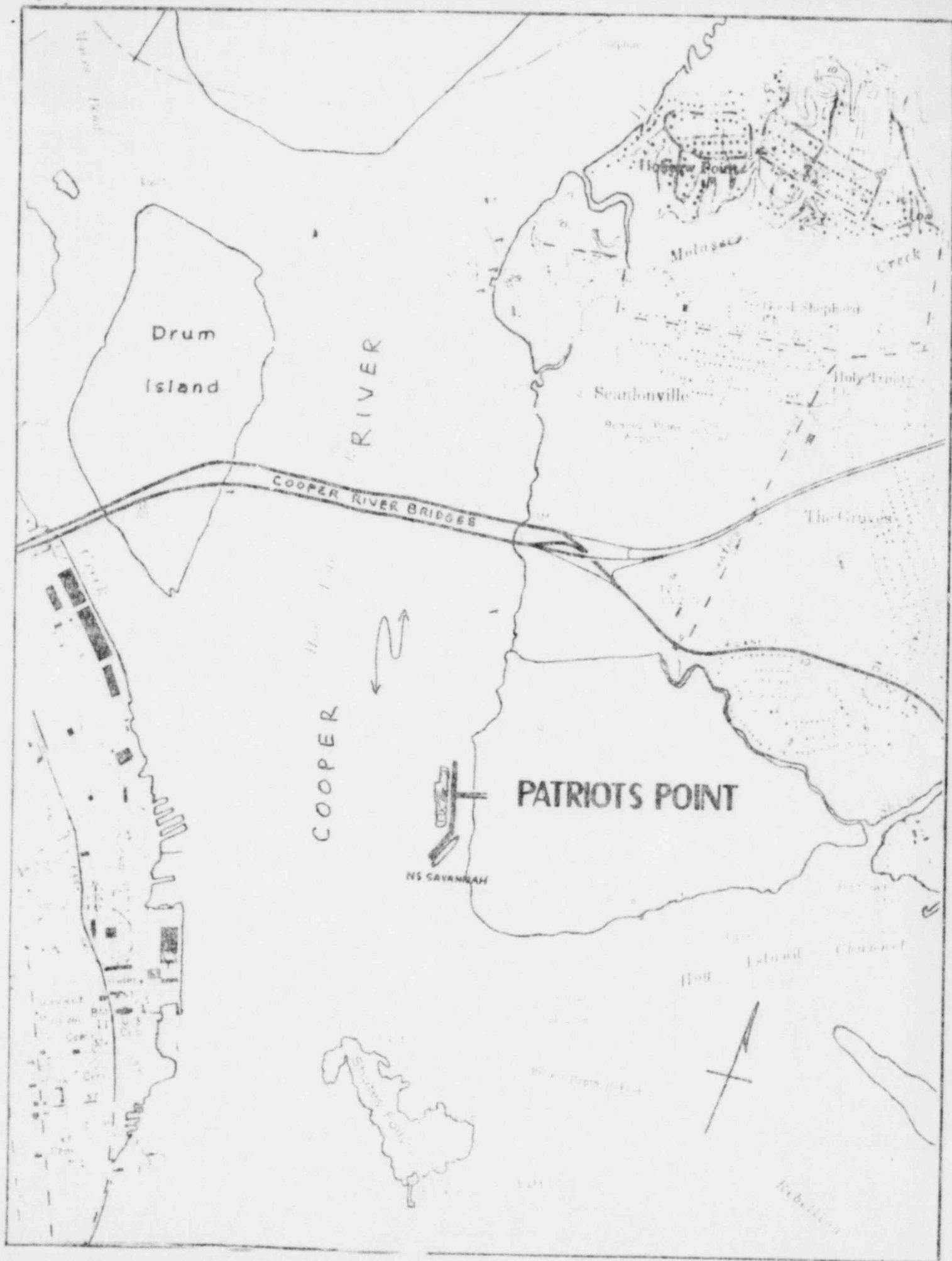
##### 5.1 RADIOLOGICAL EMERGENCY

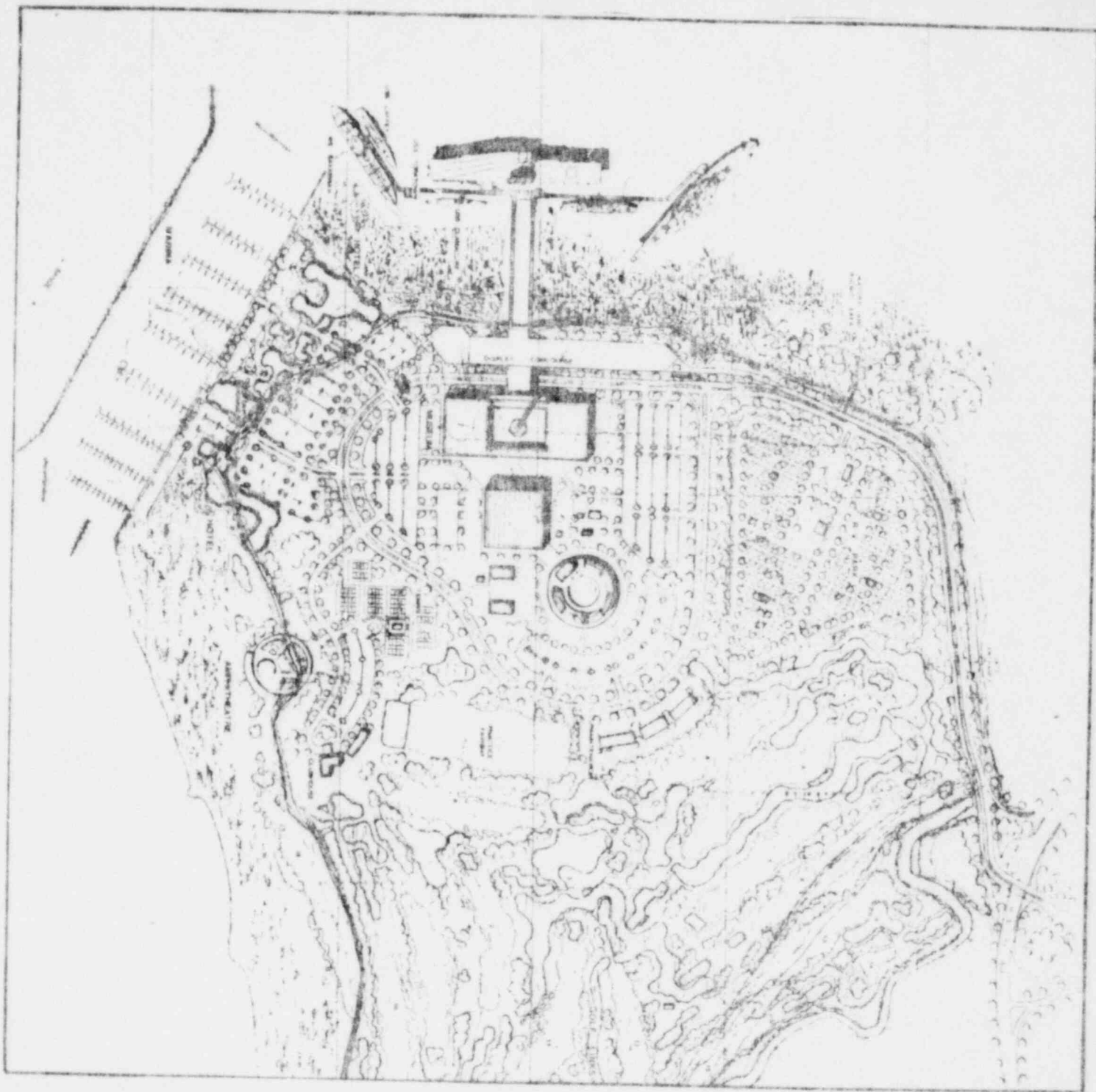
The Patriots Point Development Authority has acquired the services of the Radiation Safety Office at the Medical University of South Carolina, Charleston, S. C. A qualified health physicist from that office will provide radiological assistance to Patriots Point in the event of a radiological emergency or if entry into a radiation control area is required.

##### 5.2 FIRE FIGHTING SUPPORT

A direct fire alarm will be installed between the manned security guard station at Patriots Point and the Mt. Pleasant Fire Department. Firefighting will be the responsibility of that fire department. In the event that fires are within a radiation control area, pocket dosimeters will be provided and firemen instructed to use self contained breathing apparatus. All firefighters and equipment will be surveyed and decontaminated as required.

June 1981





## MASTER PLAN



PATRIOTS POINT DEVELOPMENT AUTHORITY  
 NAVAL AND MARITIME MUSEUM  
 CHARLESTON HARBOR, SOUTH CAROLINA

DESIGN 1966

ENGINEERING

E. M. Southwick, Jr. Inc. Mt. Pleasant, S. C.

LAND PLANNING & CITY DESIGN ARCHITECTURE

Wilbur C. Smith & Associates Atlanta, Ga.

ARCHITECTURE

Lorenz Long

Charleston, S. C.

10-7-66