

JAN 30 1990

Docket Nos. 50-424, 50-425  
License Nos. NPF-68, NPF-81

Georgia Power Company  
ATTN: Mr. W. G. Hairston, III  
Senior Vice President -  
Nuclear Operations  
P. O. Box 1295  
Birmingham, AL 35201

Gentlemen:

SUBJECT: SYSTEMATIC ASSESSMENT OF LICENSEE PERFORMANCE - FINAL REPORT  
(NRC INSPECTION REPORT NOS. 50-424/89-26 AND 50-425/89-30)

Thank you for your January 8, 1990, response to our December 6, 1989, Initial Systematic Assessment of Licensee Performance (SALP) Report. This report contained a periodic evaluation of your Vogtle facility for the period of October 1, 1988, through September 30, 1989. The results of this report were discussed with you at a public meeting held at your Vogtle facility on December 14, 1989.

Your response stated that you did not agree with the evaluation that the overall level of performance of Plant Vogtle during this SALP period was comparable to that of the last SALP period. Your response also requested that a revision to the SALP Report be made to note that the overall performance had improved since the last evaluation period.

While the wording of the initial report and transmittal letter was not intended to minimize the improvements noted in certain areas, it is recognized that the wording's connotation could allow for misinterpretation. We have reviewed the SALP Report and cover letter and believe that the areas of performance improvement and decline are adequately described without reliance upon the sentence in question. Bearing this in mind, the SALP report and transmittal letter have been modified by deleting the sentence in question.

No reply to this letter is required; however, should you have any questions concerning these matters, I will be pleased to discuss them with you.

Sincerely,

Original Signed by  
James L. Milhoan/for

Stewart D. Ebnetter  
Regional Administrator

Enclosures: (See page 2)

9002260187 900130  
PDR ADOCK 05000424  
FDC

IE40

Enclosures:

1. SALP Presentation Meeting Summary
2. SALP Presentation Meeting Slides
3. Licensee Response dated  
January 8, 1990
4. Errata Package

cc w/encls:

R. P. McDonald  
Executive Vice President-Nuclear  
Operations  
Georgia Power Company  
P. O. Box 1295  
Birmingham, AL 35201

C. K. McCoy  
Vice President-Nuclear  
Georgia Power Company  
P. O. 1295  
Birmingham, AL 35201

G. Bockhold, Jr.  
General Manager, Nuclear Operations  
Georgia Power Company  
P. O. 1600  
Waynesboro, GA 30830

J. A. Bailey  
Manager-Licensing  
Georgia Power Company  
P. O. Box 1295  
Birmingham, AL 35201

B. W. Churchill, Esquire  
Shaw, Pittman, Potts, and Trowbridge  
2300 N Street, NW  
Washington, D. C. 20037

J. E. Joiner, Esquire  
Troutman, Sanders, Lockerman, and  
Ashmore  
1400 Candler Building  
127 Peachtree Street, NE  
Atlanta, GA 30303

D. Kirkland, III, Counsel  
Office of the Consumer's  
Utility Council  
Suite 225, 32 Peachtree Street, NE  
Atlanta, GA 30302

(cc w/encls cont'd - see page 3)

JAN 8 0 1990

cc w/encls:  
Office of Planning and Budget  
Room 615B  
270 Washington Street, SW  
Atlanta, GA 30334

Office of the County Commissioner  
Burke County Commission  
Waynesboro, GA 30830

J. Leonard Ledbetter, Director  
Environmental Protection Division  
Department of Natural Resources  
205 Butler Street, SE, Suite 1252  
Atlanta, GA 30334

Attorney General  
Law Department  
132 Judicial Building  
Atlanta, GA 30334

State of Georgia

bcc w/encls:  
K. M. Carr, Chairman  
T. M. Roberts, Commissioner  
F. J. Remick, Commissioner  
K. C. Rogers, Commissioner  
J. R. Curtiss, Commissioner  
J. M. Taylor, EDO  
H. L. Thompson, Jr., EDO  
R. W. Borchardt, Regional  
Coordinator, EDO  
T. E. Murley, NRR  
S. Varga, NRR  
E. Reis, NRR  
J. Hopkins, NRR  
R. Nease, SALP Coordinator, NRR  
Regional Administrators, RI, RIII  
RIV, and RV  
K. Clark, RII, PAO  
A. Herdt, DRP, RII  
K. Brockman, DRP, RII  
L. Trocine, DRP, RII  
K. Landis, Chief, TSS  
NRC Resident Inspector  
DRS and DRSS Branch Chiefs,  
and Section Chiefs

INPO  
IMPELL  
Document Control Desk

<del>RII:DRP</del>	RII:DRP	RII:DRP	RII:DRSS	RII:DRP	HQ:NRR	HQ:NRR
<del>JRogge</del>	<sup>KB</sup> KBrockman	<sup>AH</sup> AHerdt	<sup>WC</sup> WCline	<sup>CH</sup> CHehl	<sup>Per</sup> Per forless Telecom JHopkins	<sup>DM</sup> DMatthew
<del>1/7/90</del>	1/2/90	1/2/90	1/2/90	1/25/90	1/25/90	1/5/90
<del>RII:DRS</del>	RII:ORA					
<del>AGibson</del>	JMilhoan					
<del>1/25/90</del>	1/2/90					

ENCLOSURE 1

MEETING SUMMARY

A. Summary

At 10:00 a.m., on December 14, 1989, a management meeting was conducted at the Vogtle facility near Waynesboro, Georgia. This meeting was held at our request to discuss the results of our Systematic Assessment of Licensee Performance (SALP) evaluation of your Vogtle facility for the appraisal period October 1, 1989, through September 30, 1989. The report documenting this assessment was sent to you on December 6, 1989.

B. Licensee Attendees

R. P. McDonald, Executive Vice President - Nuclear Operations  
W. G. Hairston, III, Senior Vice President - Nuclear Operations  
C. K. McCoy, Jr., Vice President - Plant Vogtle  
G. Bockhold, Jr., General Manager - Nuclear Plant  
W. B. Shipman, General Manager - Nuclear Support, SONOPCO  
A. L. Mosbaugh, Assistant General Manager - Plant Support  
W. F. Kitchens, Assistant General Manager - Plant Operations  
J. A. Bailey, Manager - Licensing

This list of licensee attendees above does not include a large number of Georgia Power Company employees that were present at the SALP presentation. The additional attendees included managers, supervisors, and various plant staff members. Representatives from the Oglethorpe Electric Membership Cooperative and the Georgia Public Service Commission were also present. This large turnout was beneficial to the SALP process and is highly recommended for future presentations. The free exchange of views during this meeting was also beneficial.

C. NRC Attendees

S. D. Ebnetter, Regional Administrator, Region II (RII)  
A. F. Gibson, Director, Division of Reactor Safety, RII  
C. W. Hehl, Deputy Director, Division of Reactor Projects (DRP), RII  
A. R. Herdt, Branch Chief, Reactor Projects Branch No. 3, DRP, RII  
W. E. Cline, Branch Chief, Nuclear Materials Safety and Safeguards Branch, Division of Radiation Safety and Safeguards, RII  
D. B. Matthews, Director, Project Directorate II-3 (PDII-3), Office of Nuclear Reactor Regulation (NRR)  
J. F. Rogge, Senior Resident Inspector, Plant Vogtle, Reactor Projects Section 3B (RP3B), DRP, RII  
R. F. Aiello, Resident Inspector, Plant Vogtle, RP3B, DRP, RII  
R. D. Starkey, Resident Inspector, Plant Vogtle, RP3B, DRP, RII  
J. B. Hopkins, Project Manager, PDII-3, NRR  
L. Trocine, Project Engineer, RP3B, DRP, RII

D. SALP Presentation Slides

Refer to Enclosure 2.

JAN 8 0 1990

cc w/encls:  
Office of Planning and Budget  
Room 615B  
270 Washington Street, SW  
Atlanta, GA 30334

Office of the County Commissioner  
Burke County Commission  
Waynesboro, GA 30830

J. Leonard Ledbetter, Director  
Environmental Protection Division  
Department of Natural Resources  
205 Butler Street, SE, Suite 1252  
Atlanta, GA 30334

Attorney General  
Law Department  
132 Judicial Building  
Atlanta, GA 30334

State of Georgia

bcc w/encls:  
K. M. Carr, Chairman  
T. M. Roberts, Commissioner  
F. J. Remick, Commissioner  
K. C. Rogers, Commissioner  
J. R. Curtiss, Commissioner  
J. M. Taylor, EDO  
H. L. Thompson, Jr., EDO  
R. W. Borchardt, Regional  
Coordinator, EDO  
T. E. Murley, NRR  
S. Varga, NRR  
E. Reis, NRR  
J. Hopkins, NRR  
R. Nease, SALP Coordinator, NRR  
Regional Administrators, RI, RIII  
RIV, and RV  
K. Clark, RII, PAO  
A. Herdt, DRP, RII  
K. Brockman, DRP, RII  
L. Trocine, DRP, RII  
K. Landis, Chief, TSS  
NRC Resident Inspector  
DRS and DRSS Branch Chiefs,  
and Section Chiefs

INPO	<del>RII:DRP</del>	RII:DRP	RII:DRP	RII:DRSS	RII:DRP	HQ:NRR	HQ:NRR
IMPELL					Per Telecom	Per Telecom	
Document Control Desk	JRegge 1/21/90	KBrockman 1/21/90	AHerdt 1/21/90	WCline 1/21/90	CHehl 1/25/90	JHopkins 1/25/90	DMatthe 1/25/90
	<del>RII:DRS</del>	RII:ORA					
	AGibson 1/25/90	JMilhoan 1/25/90					

ENCLOSURE 1

MEETING SUMMARY

A. Summary

At 10:00 a.m., on December 14, 1989, a management meeting was conducted at the Vogtle facility near Waynesboro, Georgia. This meeting was held at our request to discuss the results of our Systematic Assessment of Licensee Performance (SALP) evaluation of your Vogtle facility for the appraisal period October 1, 1989, through September 30, 1989. The report documenting this assessment was sent to you on December 6, 1989.

B. Licensee Attendees

R. P. McDonald, Executive Vice President - Nuclear Operations  
W. G. Hairston, III, Senior Vice President - Nuclear Operations  
C. K. McCoy, Jr., Vice President - Plant Vogtle  
G. Bockhold, Jr., General Manager - Nuclear Plant  
W. B. Shipman, General Manager - Nuclear Support, SONOPCO  
A. L. Mosbaugh, Assistant General Manager - Plant Support  
W. F. Kitchens, Assistant General Manager - Plant Operations  
J. A. Bailey, Manager - Licensing

This list of licensee attendees above does not include a large number of Georgia Power Company employees that were present at the SALP presentation. The additional attendees included managers, supervisors, and various plant staff members. Representatives from the Oglethorpe Electric Membership Cooperative and the Georgia Public Service Commission were also present. This large turnout was beneficial to the SALP process and is highly recommended for future presentations. The free exchange of views during this meeting was also beneficial.

C. NRC Attendees

S. D. Ebner, Regional Administrator, Region II (RII)  
A. F. Gibson, Director, Division of Reactor Safety, RII  
C. W. Hehl, Deputy Director, Division of Reactor Projects (DRP), RII  
A. R. Herdt, Branch Chief, Reactor Projects Branch No. 3, DRP, RII  
W. E. Cline, Branch Chief, Nuclear Materials Safety and Safeguards Branch, Division of Radiation Safety and Safeguards, RII  
D. B. Matthews, Director, Project Directorate II-3 (PDII-3), Office of Nuclear Reactor Regulation (NRR)  
J. F. Rogge, Senior Resident Inspector, Plant Vogtle, Reactor Projects Section 3B (RP3B), DRP, RII  
R. F. Aiello, Resident Inspector, Plant Vogtle, RP3B, DRP, RII  
R. D. Starkey, Resident Inspector, Plant Vogtle, RP3B, DRP, RII  
J. B. Hopkins, Project Manager, PDII-3, NRR  
L. Trocine, Project Engineer, RP3B, DRP, RII

D. SALP Presentation Slides

Refer to Enclosure 2.

**UNITED STATES**  
**NUCLEAR REGULATORY**  
**COMMISSION**

**SYSTEMATIC ASSESSMENT**  
**OF**  
**LICENSEE PERFORMANCE**

**(SALP)**

# GEORGIA POWER COMPANY

OCTOBER 1, 1988 through SEPTEMBER 30, 1989

VOGTLE UNITS 1 AND 2

DECEMBER 14, 1989

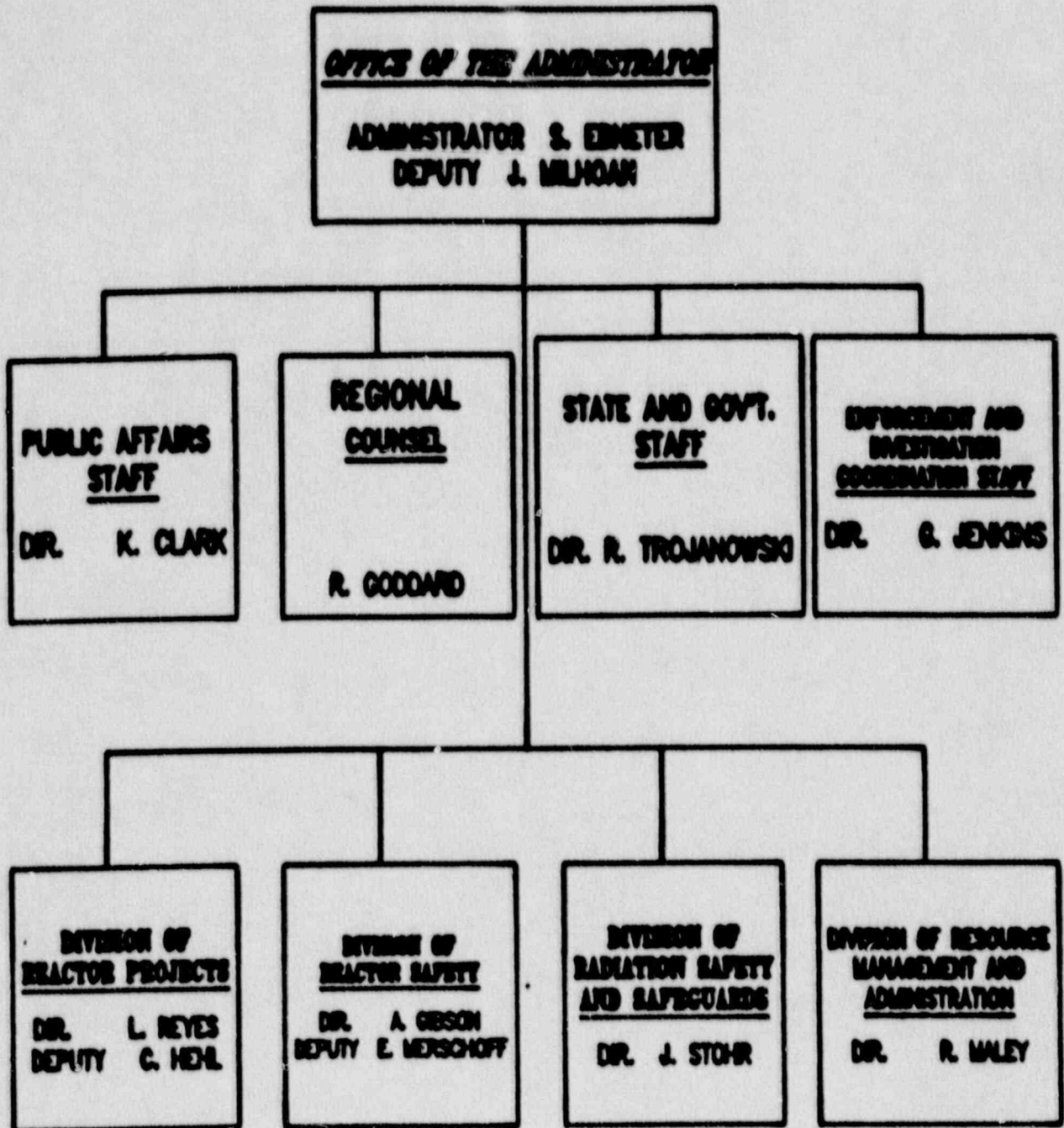
WAYNESBORO , GEORGIA



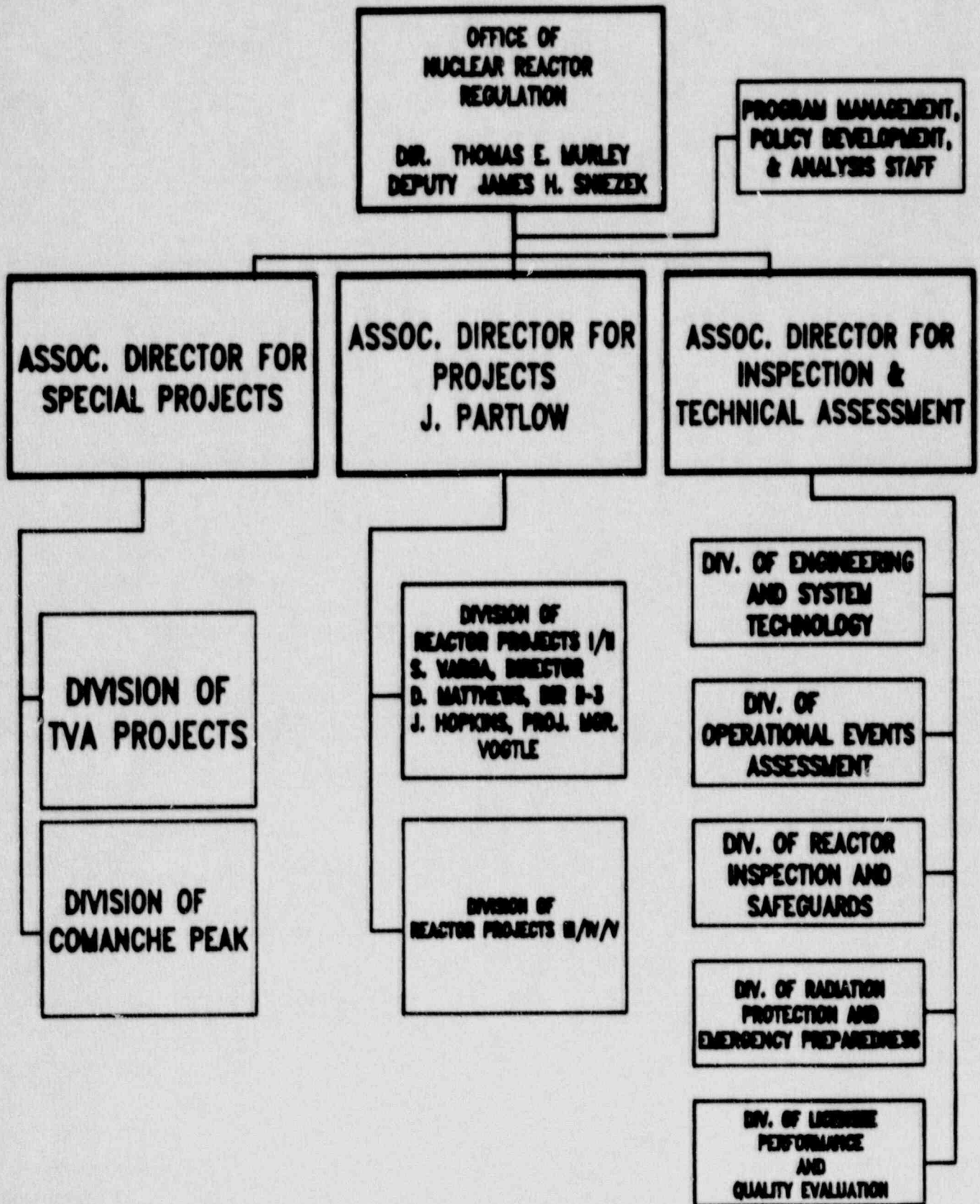
# **SALP PROGRAM OBJECTIVES**

- 1. IDENTIFY TRENDS IN LICENSEE PERFORMANCE**
- 2. PROVIDE A BASIS FOR ALLOCATION  
OF NRC RESOURCES**
- 3. IMPROVE NRC REGULATORY PROGRAM**

# REGION II ORGANIZATION



# NRR ORGANIZATION



# PERFORMANCE ANALYSIS AREAS

## FOR OPERATING REACTORS

- A. PLANT OPERATIONS
- B. RADIOLOGICAL CONTROLS
- C. MAINTENANCE / SURVEILLANCE
- D. EMERGENCY PREPAREDNESS
- E. SECURITY
- F. ENGINEERING / TECHNICAL SUPPORT
- G. SAFETY ASSESSMENT / QUALITY VERIFICATION

# AREA PERFORMANCE

## CATEGORY 1

LICENSEE MANAGEMENT ATTENTION AND INVOLVEMENT ARE READILY EVIDENT AND PLACE EMPHASIS ON SUPERIOR PERFORMANCE OF NUCLEAR SAFETY OR SAFEGUARDS ACTIVITIES, WITH THE RESULTING PERFORMANCE SUBSTANTIALLY EXCEEDING REGULATORY REQUIREMENTS. LICENSEE RESOURCES ARE AMPLE AND EFFECTIVELY USED SO THAT A HIGH LEVEL OF PLANT AND PERSONNEL PERFORMANCE IS BEING ACHIEVED. REDUCED NRC ATTENTION MAY BE APPROPRIATE.

# AREA PERFORMANCE

## CATEGORY 2

LICENSEE MANAGEMENT ATTENTION AND INVOLVEMENT IN THE PERFORMANCE OF NUCLEAR SAFETY OR SAFEGUARDS ACTIVITIES ARE GOOD. THE LICENSEE HAS ATTAINED A LEVEL OF PERFORMANCE ABOVE THAT NEEDED TO MEET REGULATORY REQUIREMENTS. LICENSEE RESOURCES ARE ADEQUATE AND REASONABLY ALLOCATED SO THAT GOOD PLANT AND PERSONNEL PERFORMANCE IS BEING ACHIEVED. NRC ATTENTION MAY BE MAINTAINED AT NORMAL LEVELS.

# AREA PERFORMANCE

## CATEGORY 3

LICENSEE MANAGEMENT ATTENTION AND INVOLVEMENT  
IN THE PERFORMANCE OF NUCLEAR SAFETY OR SAFEGUARDS  
ACTIVITIES ARE NOT SUFFICIENT. THE LICENSEE'S  
PERFORMANCE DOES NOT SIGNIFICANTLY EXCEED THAT NEEDED  
TO MEET MINIMAL REGULATORY REQUIREMENTS. LICENSEE  
RESOURCES APPEAR TO BE STRAINED OR NOT EFFECTIVELY  
USED. NRC ATTENTION SHOULD BE INCREASED ABOVE  
NORMAL LEVELS.

# EVALUATION CRITERIA

1. MANAGEMENT INVOLVEMENT IN ASSURING QUALITY
2. APPROACH TO THE IDENTIFICATION AND RESOLUTION OF TECHNICAL ISSUES FROM A SAFETY STANDPOINT
3. RESPONDSIVENESS TO NRC INITIATIVES
4. ENFORCEMENT HISTORY
5. REPORTING AND ANALYSIS OF REPORTABLE EVENTS
6. STAFFING (INCLUDING MANAGEMENT)
7. TRAINING EFFECTIVENESS AND QUALIFICATION



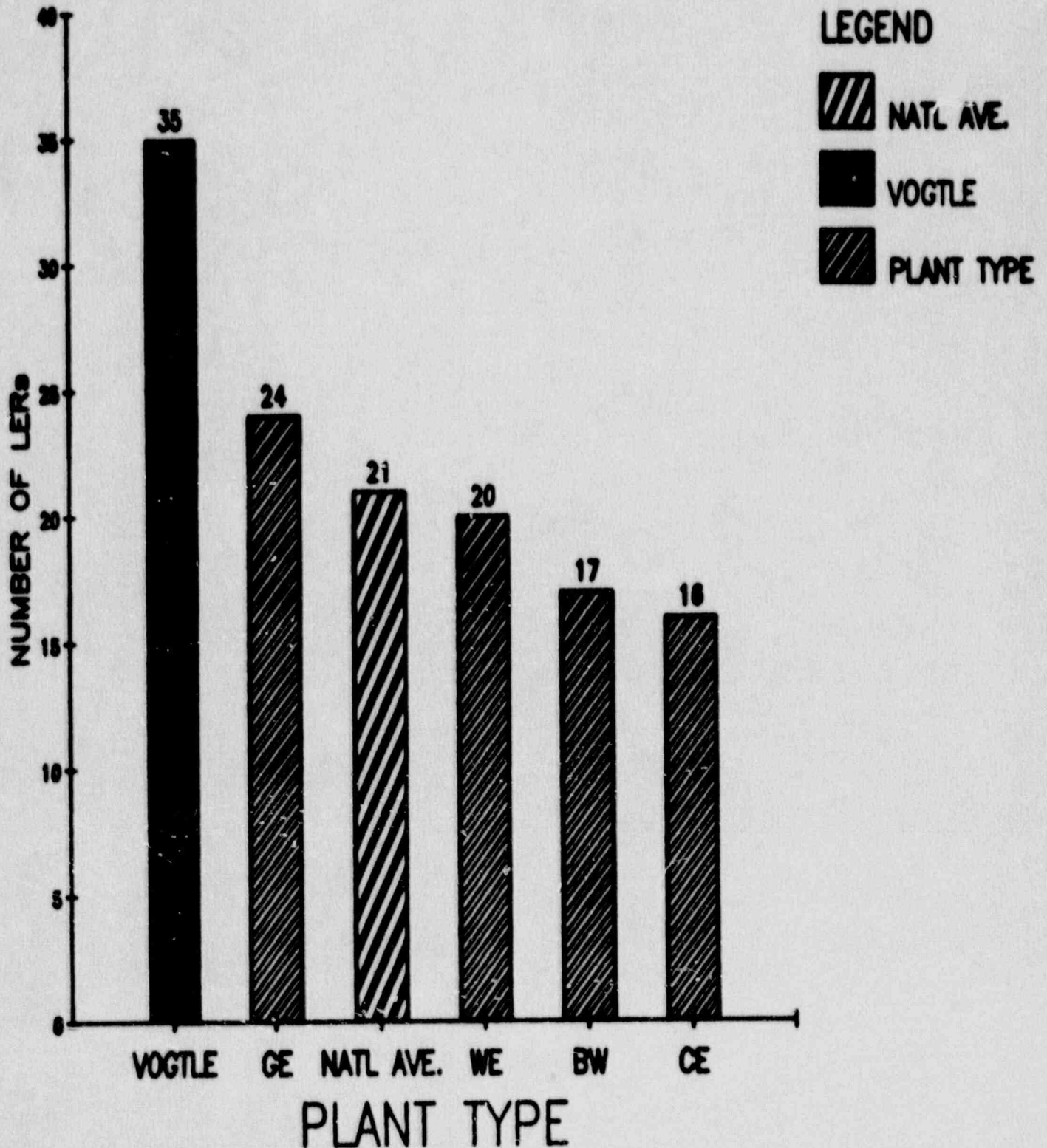
# VIOLATION SUMMARY

OCTOBER 01, 1988 through SEPTEMBER 30, 1989

	I	II	III	IV	V
VOGTLE 1	0	0	0	23	1
VOGTLE 2	0	0	0	11	0
REGION II AVE. PER UNIT	0	0	2	15	4

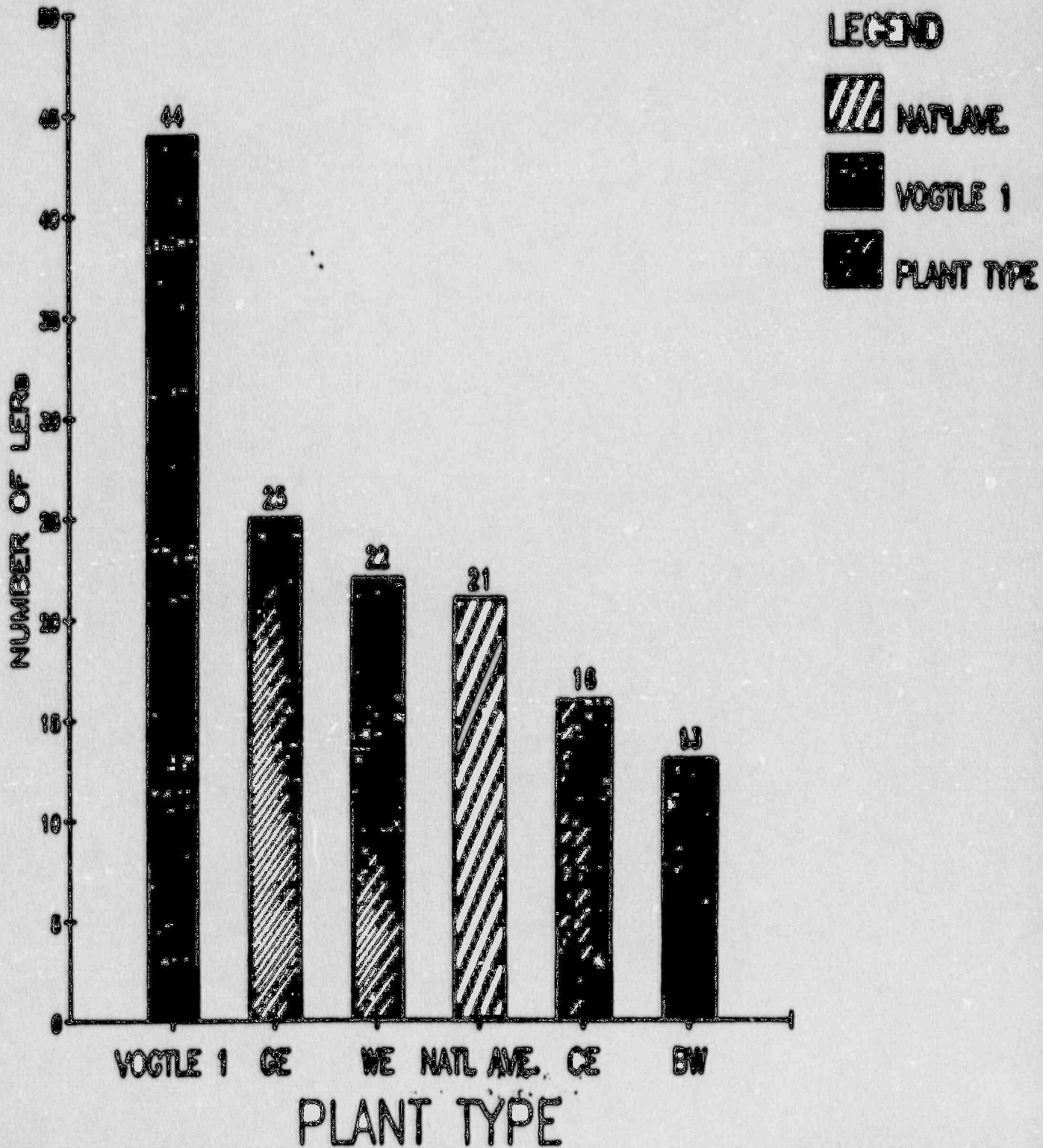
# LERs PER UNIT

OCTOBER 1, 1988 through SEPTEMBER 30, 1989



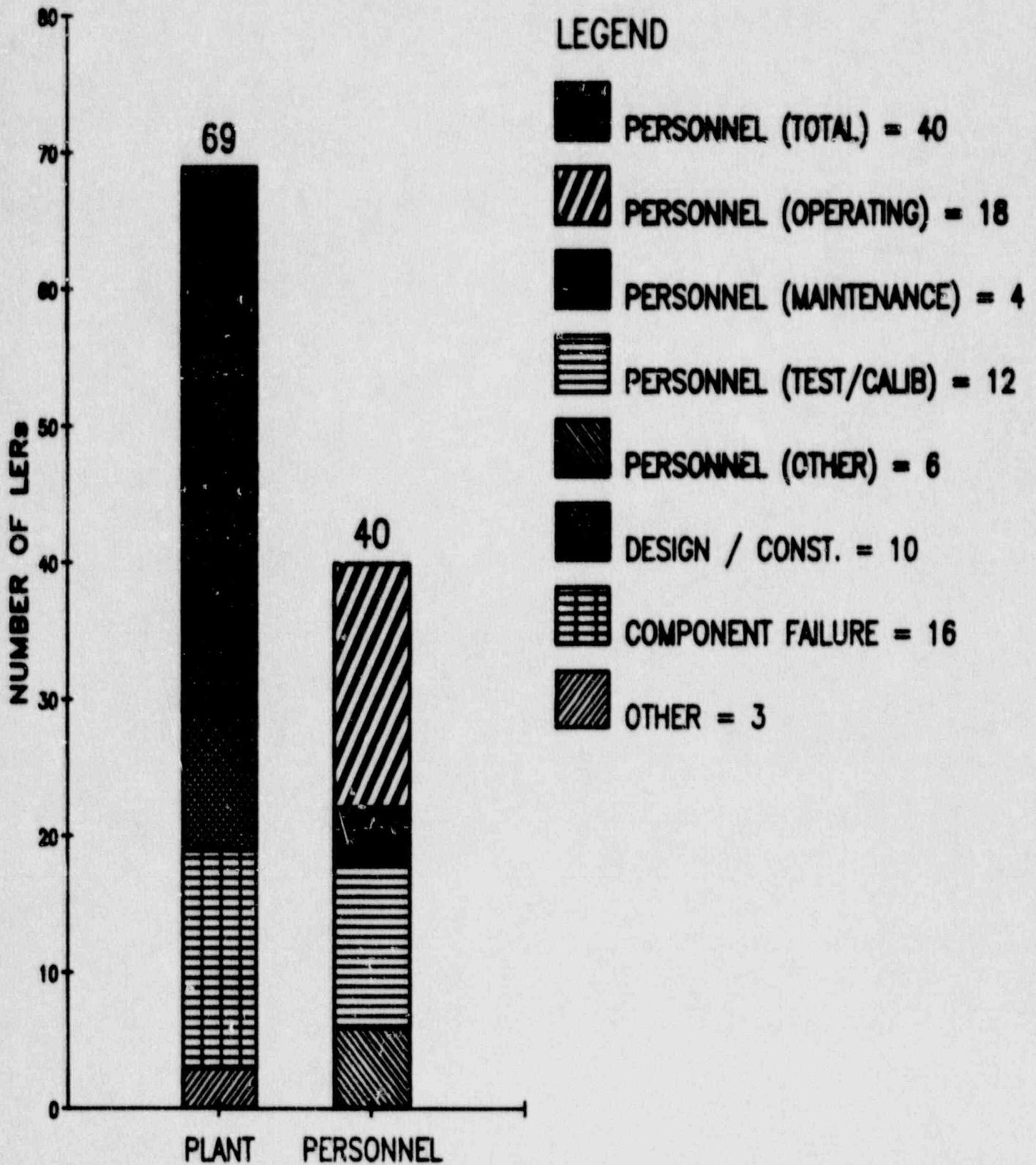
# LEERS PER UNIT

OCTOBER 1, 1987 through SEPTEMBER 30, 1988



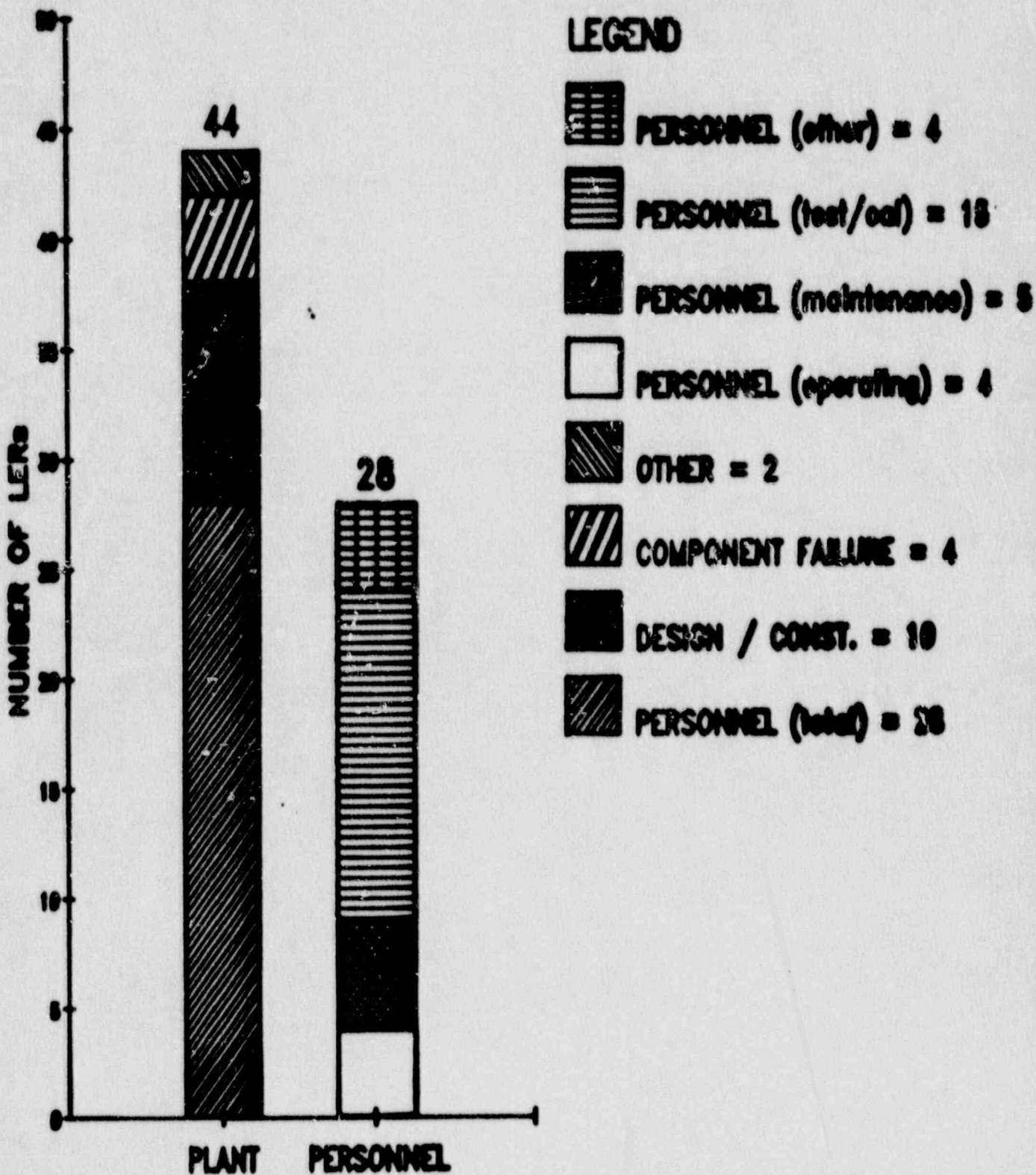
# VOGTLE LERs

OCTOBER 1, 1988 THROUGH SEPTEMBER 30, 1989



# VOGTLE LERs

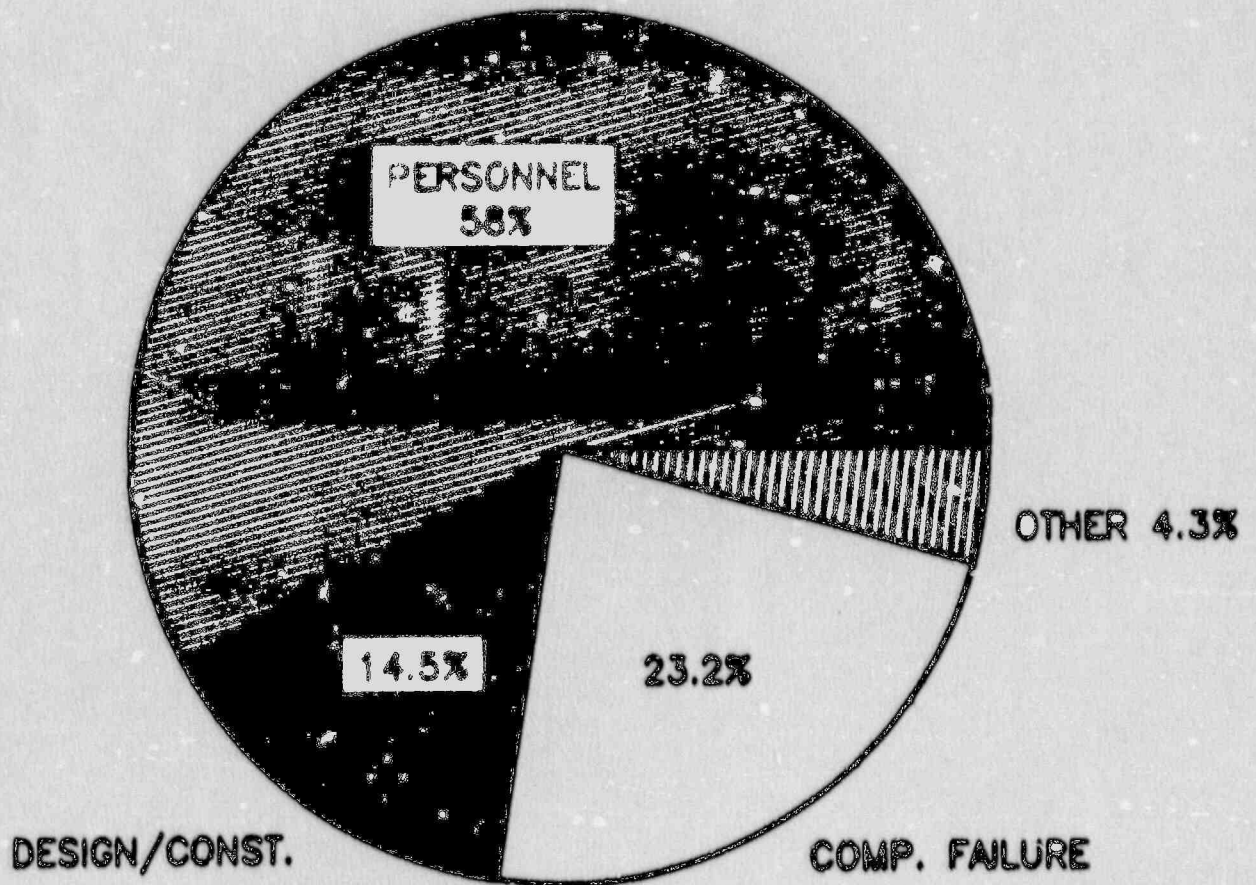
OCTOBER 1, 1987 through SEPTEMBER 30, 1988



# VOGTLE LERs

(PLANT)

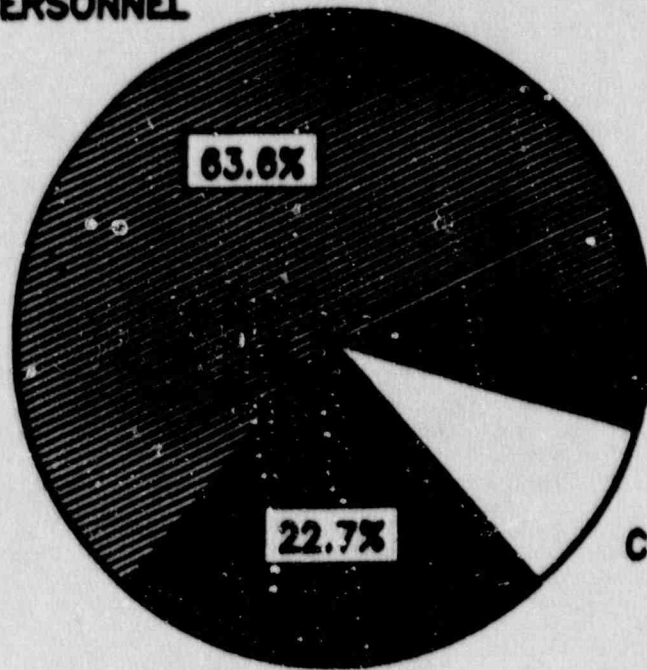
OCTOBER 1, 1988 through SEPTEMBER 30, 1989



# VOGTLE LERs (PLANT)

OCTOBER 1, 1967 through SEPTEMBER 30, 1968

PERSONNEL



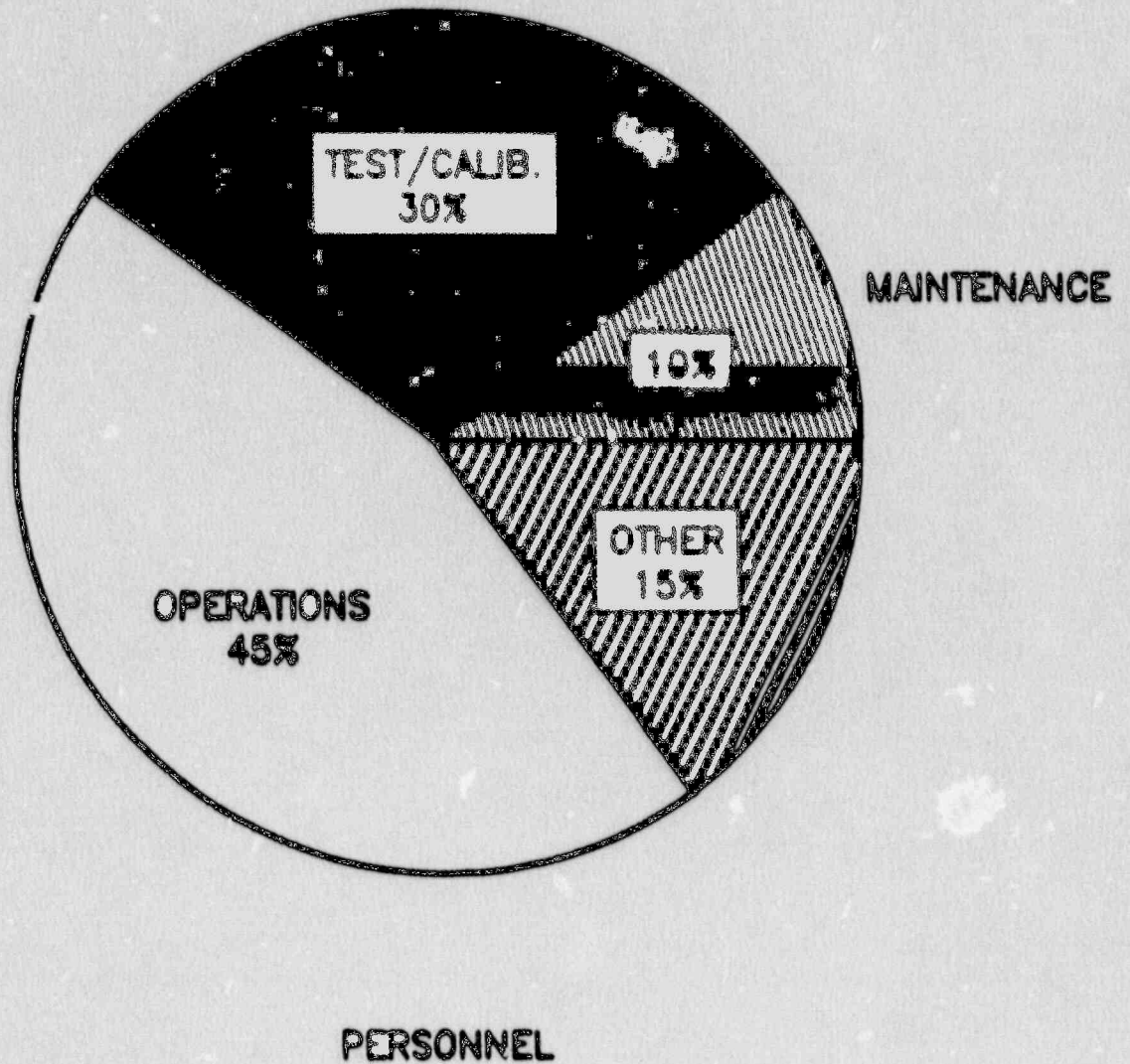
OTHER 4.5%

COMP. FAILURE 9.1%

DESIGN/CONST.

# VOGTLE LERs (PERSONNEL)

OCTOBER 1, 1988 through SEPTEMBER 30, 1989

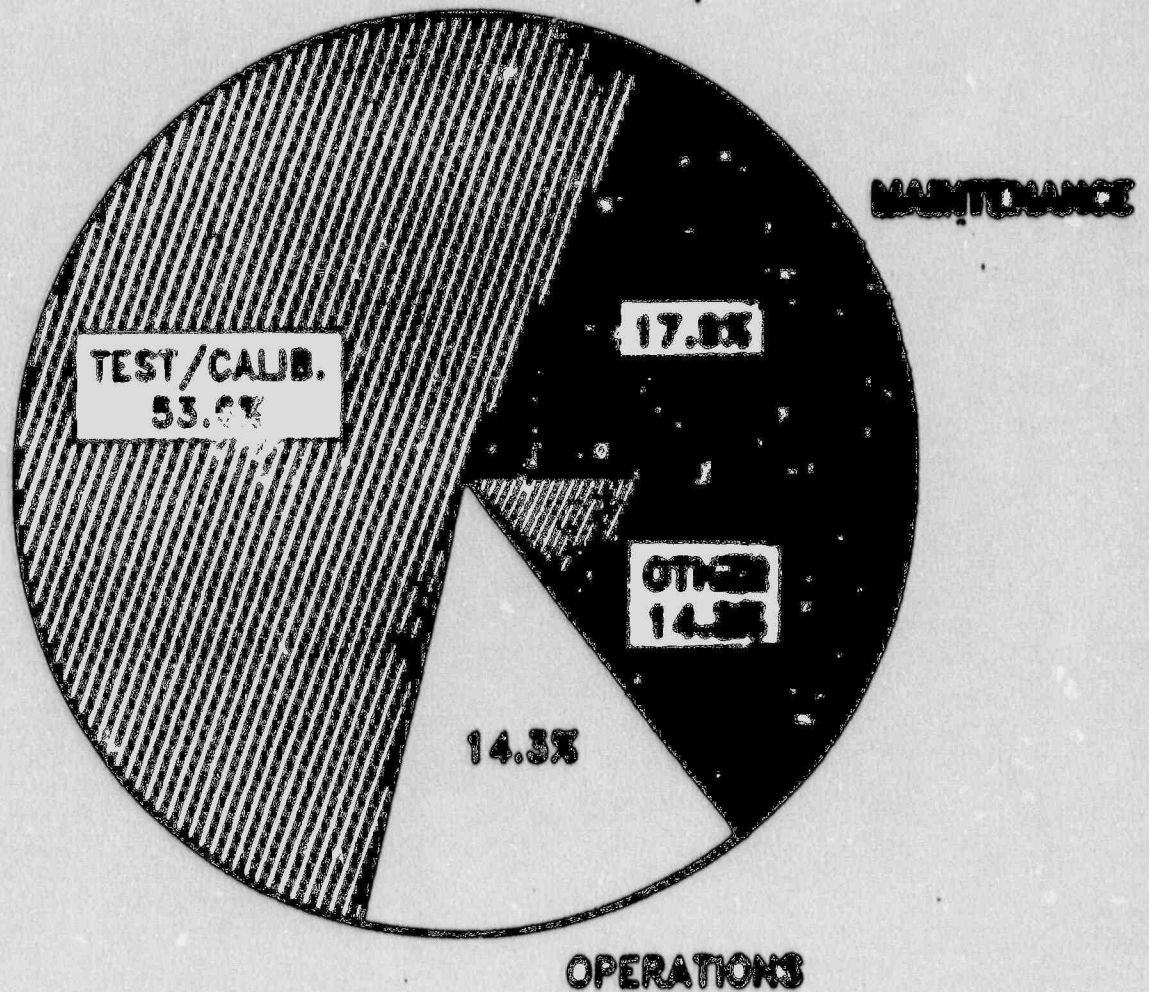




# VOGTLE IERs

(PERSONNEL)

OCTOBER 1, 1957 through SEPTEMBER 30, 1958



OPERATIONS-CATEGORY 2

- STRONG MANAGEMENT SUPPORT FOR OPERATIONS
- PROFESSIONAL CONTROL ROOM ACTIVITIES
- PERSONNEL ERRORS CAUSE OPERATIONAL EVENTS
- EFFECTIVE FIRE PROTECTION PROGRAM

RADIOLOGICAL CONTROLS-CATEGORY 2(I)

- STRONG MANAGEMENT SUPPORT
- IMPROVED REGULATORY COMPLIANCE
- EFFECTIVE PRIMARY AND SECONDARY CHEMISTRY PROGRAMS
- RADIATION EXPOSURES MAINTAINED LOW
- ADEQUATE CONTROL OF RADIOACTIVE EFFLUENTS
- ADEQUATE RADIOLOGICAL CONTROL AUDITS

MAINTENANCE/SURVEILLANCE-CATEGORY 1

- WELL QUALIFIED MAINTENANCE STAFF
- STRONG MAINTENANCE PLANNING
- EFFECTIVE PROBLEM IDENTIFICATION AND CORRECTION
- IMPROVED SURVEILLANCE PROGRAM

EMERGENCY PREPAREDNESS-CATEGORY 2

- ADEQUATE STAFFING
- EFFECTIVE TRAINING
- ADEQUATE FACILITIES AND EQUIPMENT
- EFFECTIVE AUDITS
- DEMONSTRATED ABILITY TO IMPLEMENT PLAN

SECURITY-CATEGORY 2 (D)

- ADEQUATE STAFFING
- GOOD PROCEDURES
- ADEQUATE TRAINING
- IMPLEMENTATION PROBLEMS

ENGINEERING/TECHNICAL SUPPORT-CATEGORY 2

- EFFECTIVE CORPORATE AND ONSITE ENGINEERING SUPPORT
- SATISFACTORY DESIGN CHANGE ACTIVITIES
- OPERATOR EXAM RESULTS INDICATE EFFECTIVE TRAINING
- POOR QUALITY OF DRAWINGS IN CONTROL ROOM

SAFETY ASSESSMENT/QUALITY VERIFICATION-CATEGORY 2

- AUDITS WERE EFFECTIVE
- CORRECTIVE ACTIONS NOT ALWAYS EFFECTIVE
- MOST EVENTS PROPERLY REPORTED
- LICENSING SUBMITTALS WERE ADEQUATE
- EFFECTIVE QUALITY CONCERNS PROGRAM



UNIT 2 PREOPERATIONAL TESTING-CATEGORY 1

- TEST PROCEDURES WERE ADEQUATE
- TEST DEFICIENCIES WERE PROPERLY RESOLVED
- TESTING WAS COMPLETED ON SCHEDULE

UNIT 2 STARTUP TESTING-CATEGORY 1

- TEST PROCEDURES WERE ADEQUATE
- TESTS WERE PROPERLY CONDUCTED
- EQUIPMENT FAILURES WERE THOROUGHLY EVALUATED
- OPERATOR PERFORMANCE WAS WEAK

Georgia Power Company  
333 Piedmont Avenue  
Atlanta, Georgia 30308  
Telephone 404 526 3195

ENCLOSURE 3

Mailing Address  
40 Inverness Center Parkway  
Post Office Box 1295  
Birmingham, Alabama 35201  
Telephone 205 868-5581

January 8, 1990

30 JAN 12 P 2: 00  
the southern electric system

W. G. Hairston, III  
Senior Vice President  
Nuclear Operations

ELV-01211  
0191

Docket Nos. 50-424  
50-425

U. S. Nuclear Regulatory Commission  
ATTN: Document Control Desk  
Washington, D. C. 20555

Gentlemen:

**VOGTLE ELECTRIC GENERATING PLANT  
RESPONSE TO SYSTEMATIC ASSESSMENT OF  
LICENSEE PERFORMANCE**

Georgia Power Company (GPC) has reviewed the information presented in the Systematic Assessment of Licensee Performance (SALP) Report transmitted by your letter dated December 6, 1989, and at the meeting held between GPC and the NRC at the Vogtle Electric Generating Plant site on December 14, 1989.

We appreciate the constructive comments made in the SALP evaluation, as well as your recognition of GPC's efforts and successes in improving our performance. GPC is fully committed to the safe and efficient operation of its nuclear plants. We take the SALP Board recommendations seriously and will use this information in the continuing process of improving our performance.

However, GPC does not agree with the NRC's evaluation as stated in the SALP Report and the transmittal letter, that the overall level of performance during this SALP period is comparable to that of the last SALP period. Some of the reasons for this disagreement are:

- o the number of unplanned reactor trips during this period was significantly lower when compared to the last period,
- o the number and severity level of violations has been significantly reduced,
- o the Plant Review Board membership has been upgraded to include department managers, which provides a higher level of review of safety issues brought before this board,
- o during this period the reliability and availability of the units was greater than during the last evaluation period which can be attributed to a more experienced and disciplined operating staff.

*Enclosure sent to RF*

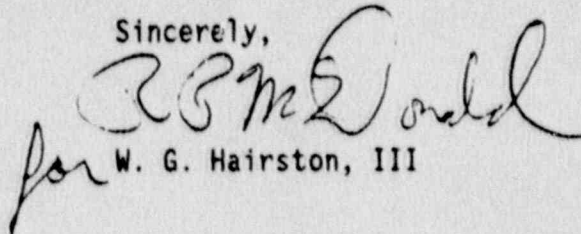
9001180142 EPP.  
**DRP OFFICIAL COPY**

U. S. Nuclear Regulatory Commission  
ELV-01211  
Page Two

It should also be noted that during this evaluation period, Unit 1 successfully completed it's first refueling outage and Unit 2 successfully completed construction, loaded fuel, completed power ascension and was placed into operation. This is as opposed to one unit in operation for the previous evaluation period. GPC requests these comments be taken into consideration and a revision of the SALP Report be made to note that the overall performance has improved since the last evaluation period.

Should you have any questions, please inquire.

Sincerely,

  
for W. G. Hairston, III

WGH, III/JAB/gm

xc: Georgia Power Company  
Mr. C. K. McCoy  
Mr. G. Bockhold, Jr.  
Mr. P. D. Rushton  
Mr. R. M. Odom  
NORMS

U. S. Nuclear Regulatory Commission  
Mr. S. D. Ebnetter, Regional Administrator ✓  
Mr. J. B. Hopkins, Licensing Project Manager, NRR  
Mr. J. F. Rogge, Senior Resident Inspector, Vogtie