

February 24, 1981

Mr. J. DelMedico
Materials Branch
Division of Fuel Cycle and Material Safety
United States Nuclear Regulatory Commission
Washington, D. C. 20555

Dear Mr. DelMedico:

This letter is to advise you that the manufacture of Xe-133 products has been terminated at the Diagnostic Isotopes Inc. facility located at 225 Belleville Avenue, Bloomfield, New Jersey.

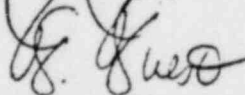
We therefore request that Byproduct Material License #29-13985-01 be terminated in its entirety at this time.

All radioactive materials associated with our Xe-133 production operation have been appropriately disposed of and the Xe-133 processing and shipping areas have been surveyed revealing no residual contamination to be present (copy attached).

Enclosed please find a check in the amount of \$110.00 to cover the required application fee.

Should you have any questions regarding this request, please do not hesitate to contact me at 201-737-0500.

Very truly yours,



Fredrick Fuest
General Manager

FF:bh
Encls.



di
diagnostic
isotopes
incorporated

225 belleville avenue
bloomfield, n. j. 07003
201-429-7590
800-631-1260
telex 133393

Decontamination Survey

Diagnostic Isotopes Incorporated
225 Belleville Avenue
Bloomfield, NJ 07003

Scope: Comprehensive radiation level survey to establish that contamination of controlled area facilities and equipment are within limits specified by the U.S. Nuclear Regulatory Commission prior to release for unrestricted use.

General Procedure:

The amount of removable radioactive material per 100 cm² of surface area was determined by wiping each area with dry filter paper, applying moderate pressure, and assessing the amount of radioactive material on the wipe with an appropriate instrument of known efficiency. The unit used in this survey is disintegrations per minute (dpm) determined by correcting the counts per minute observed by the detector for background and efficiency associated with that instrument.

Counting Parameters:

Instrument: The Nucleus, Model 500 Nuclear Scaler
1 x 1 NaI Crystal Detector

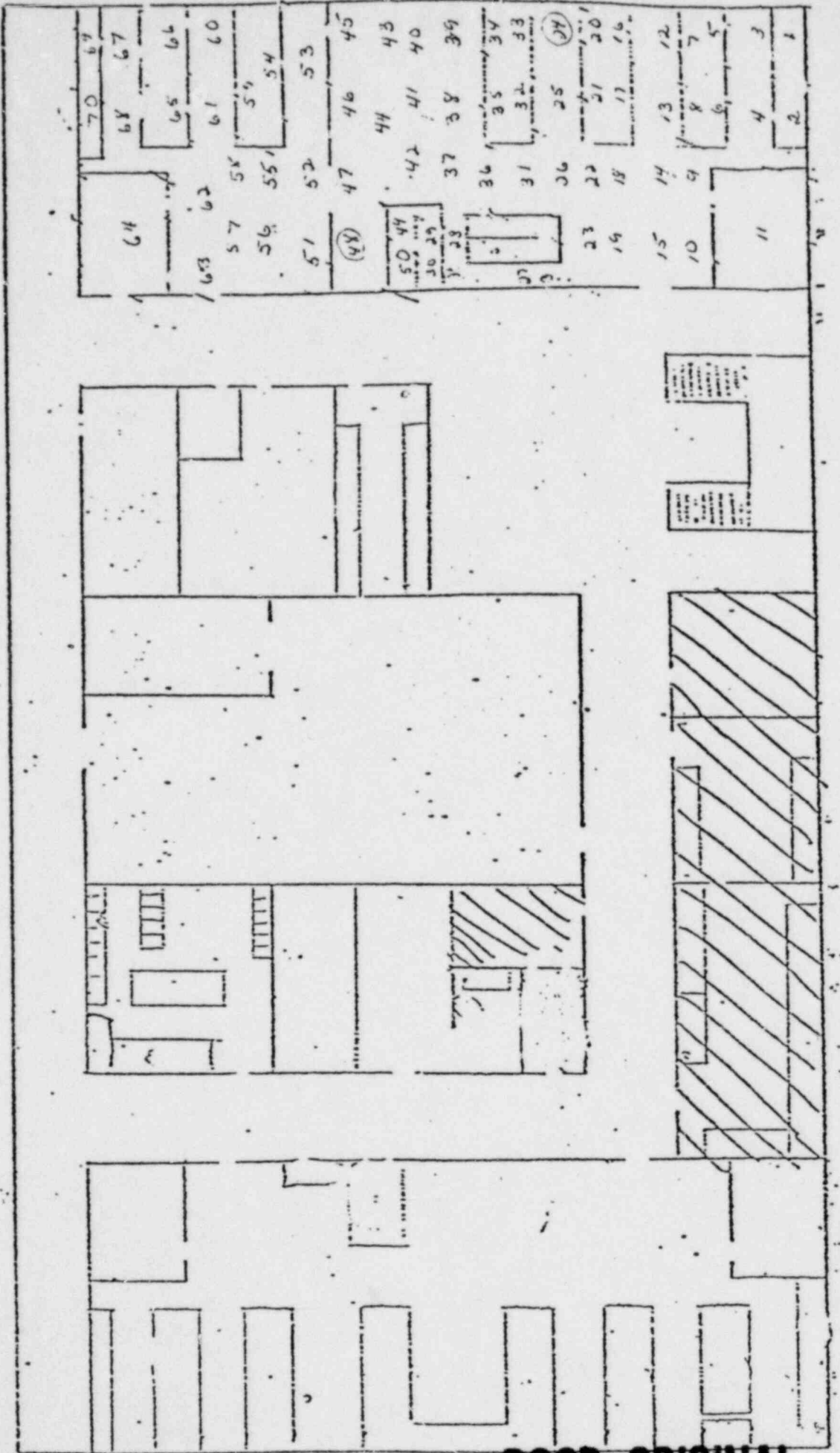
Efficiency: 10%

Count time: 30 seconds

Background count rate: 24 cpm

Results: The results of the survey indicates that no detectable contamination is present.

Production Lab / Shipping Room
 Contamination Survey
 2/20/81



POOR ORIGINAL

The Nucleus Scaler/NaI Detector
Efficiency 10% 2/20/81

BKG 24 cpm

- | | |
|---------|---------|
| 1) BKG | 36) BKG |
| 2) BKG | 37) BKG |
| 3) BKG | 38) BKG |
| 4) BKG | 39) BKG |
| 5) BKG | 40) BKG |
| 6) BKG | 41) BKG |
| 7) BKG | 42) BKG |
| 8) BKG | 43) BKG |
| 9) BKG | 44) BKG |
| 10) BKG | 45) BKG |
| 11) BKG | 46) BKG |
| 12) BKG | 47) BKG |
| 13) BKG | 48) BKG |
| 14) BKG | 49) BKG |
| 15) BKG | 50) BKG |
| 16) BKG | 51) BKG |
| 17) BKG | 52) BKG |
| 18) BKG | 53) BKG |
| 19) BKG | 54) BKG |
| 20) BKG | 55) BKG |
| 21) BKG | 56) BKG |
| 22) BKG | 57) BKG |
| 23) BKG | 58) BKG |
| 24) BKG | 59) BKG |
| 25) BKG | 60) BKG |
| 26) BKG | 61) BKG |
| 27) BKG | 62) BKG |
| 28) BKG | 63) BKG |
| 29) BKG | 64) BKG |
| 30) BKG | 65) BKG |
| 31) BKG | 66) BKG |
| 32) BKG | 67) BKG |
| 33) BKG | 68) BKG |
| 34) BKG | 69) BKG |
| 35) BKG | 70) BKG |