

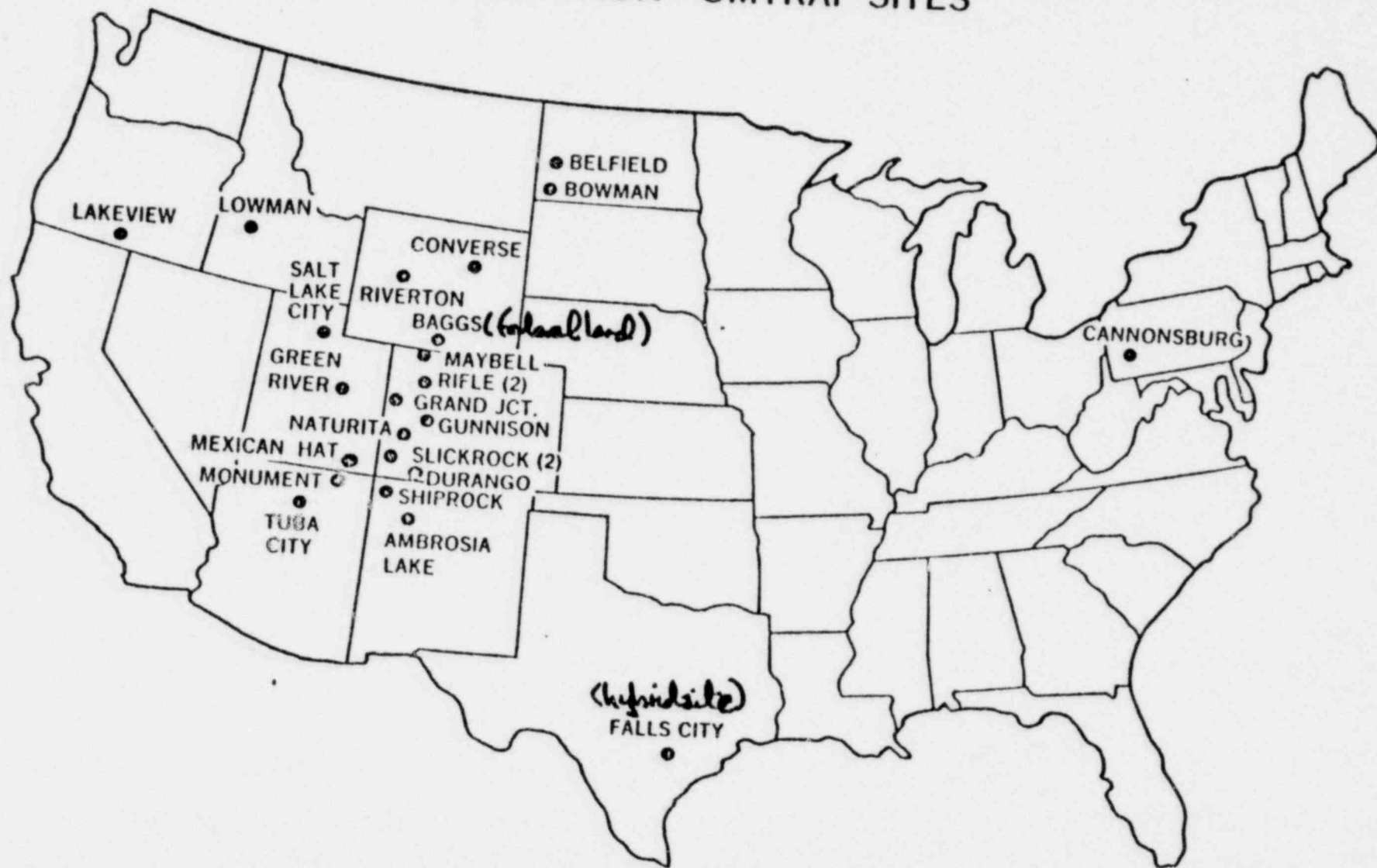
PUBLIC LAW 95-604
URANIUM MILL TAILINGS RADIATION
CONTROL ACT OF 1978

- DOE TO ENTER INTO COOPERATIVE AGREEMENTS WITH AFFECTED STATES AND INDIAN TRIBES TO ACCOMPLISH REMEDIAL ACTION.
- EXPRESSIONS OF INTEREST TO BE OBTAINED FOR REPROCESSING OF TAILINGS.
- DOE TO MEET EPA STANDARDS, NRC LICENSING CONDITIONS.
- 90/10 COST SHARING BETWEEN FEDERAL GOVERNMENT/ STATES, EXCEPT ON INDIAN TRIBAL LANDS WHERE 100% OF COSTS BORNE BY FEDERAL GOVERNMENT.
- PROJECT HAS SEVEN YEAR LIFE.

Attachment III

8106090013

LOCATION - UMTRAP SITES



PROCESSING SITES AND PRIORITIES

STATE	LOCATION	PROCESSING SITE	PRIORITY
ARIZONA	MONUMENT VALLEY	*MONUMENT VALLEY	LOW
	TUBA CITY	*TUBA CITY	MEDIUM
COLORADO	DURANGO	DURANGO	HIGH
	GRAND JUNCTION	GRAND JUNCTION	HIGH
	GUNNISON	GUNNISON	HIGH
	MAYBELL	MAYBELL	LOW
	NATURITA	NATURITA	MEDIUM
	RIFLE	NEW RIFLE	HIGH
	RIFLE	OLD RIFLE	HIGH
	SLICK ROCK	SLICK ROCK	LOW
	SLICK ROCK	SLICK ROCK	LOW
IDAHO	LOWMAN	LOWMAN	LOW
NEW MEXICO	AMBROSIA LAKE	AMBROSIA LAKE	MEDIUM
	SHIPROCK	*SHIPROCK	HIGH
NORTH DAKOTA	BELFIELD	BELFIELD	LOW
	BOWMAN	BOWMAN	LOW
OREGON	LAKEVIEW	LAKEVIEW	MEDIUM
PENNSYLVANIA	CANONSBURG	CANONSBURG	HIGH
TEXAS	FALLS CITY	FALLS CITY	MEDIUM
UTAH	GREEN RIVER	GREEN RIVER	LOW
	MEXICAN HAT	*MEXICAN HAT	MEDIUM
	SALT LAKE CITY	SALT LAKE CITY	HIGH
WYOMING	BAGGS	BAGGS	LOW
	CONVERSE	CONVERSE COUNTY	LOW
	RIVERTON	RIVERTON	HIGH

*PROCESSING SITE ON TRIBAL LANDS OWNED BY THE NAVAJO NATION

UMTRA PROJECT MISSION

IN ACCORDANCE WITH P.L. 95-604, NEPA, AND EPA STANDARDS, PROVIDE REMEDIAL ACTIONS AT 25 SITES TO STABILIZE AND CONTROL TAILINGS IN A SAFE AND ENVIRONMENTALLY SOUND MANNER TO ELIMINATE POTENTIAL HEALTH HAZARDS CAUSED BY URANIUM DECAY PRODUCTS.

- REMEDIAL ACTIONS — RA OPTIONS, PLANS, ENGINEERING DESIGN, ON-SITE ACTIVITIES, MAINTENANCE AND SURVEILLANCE
- ENVIRONMENTAL ACTIVITIES — EIS'S AND EA'S PER NEPA
- STATE/LOCAL/PUBLIC RELATIONS — STATE COOPERATIVE AGREEMENTS, COORDINATION WITH STATE/LOCAL/TRIBES, PUBLIC INFORMATION
- TECHNOLOGY DEVELOPMENT — STABILIZATION AND DISPOSAL

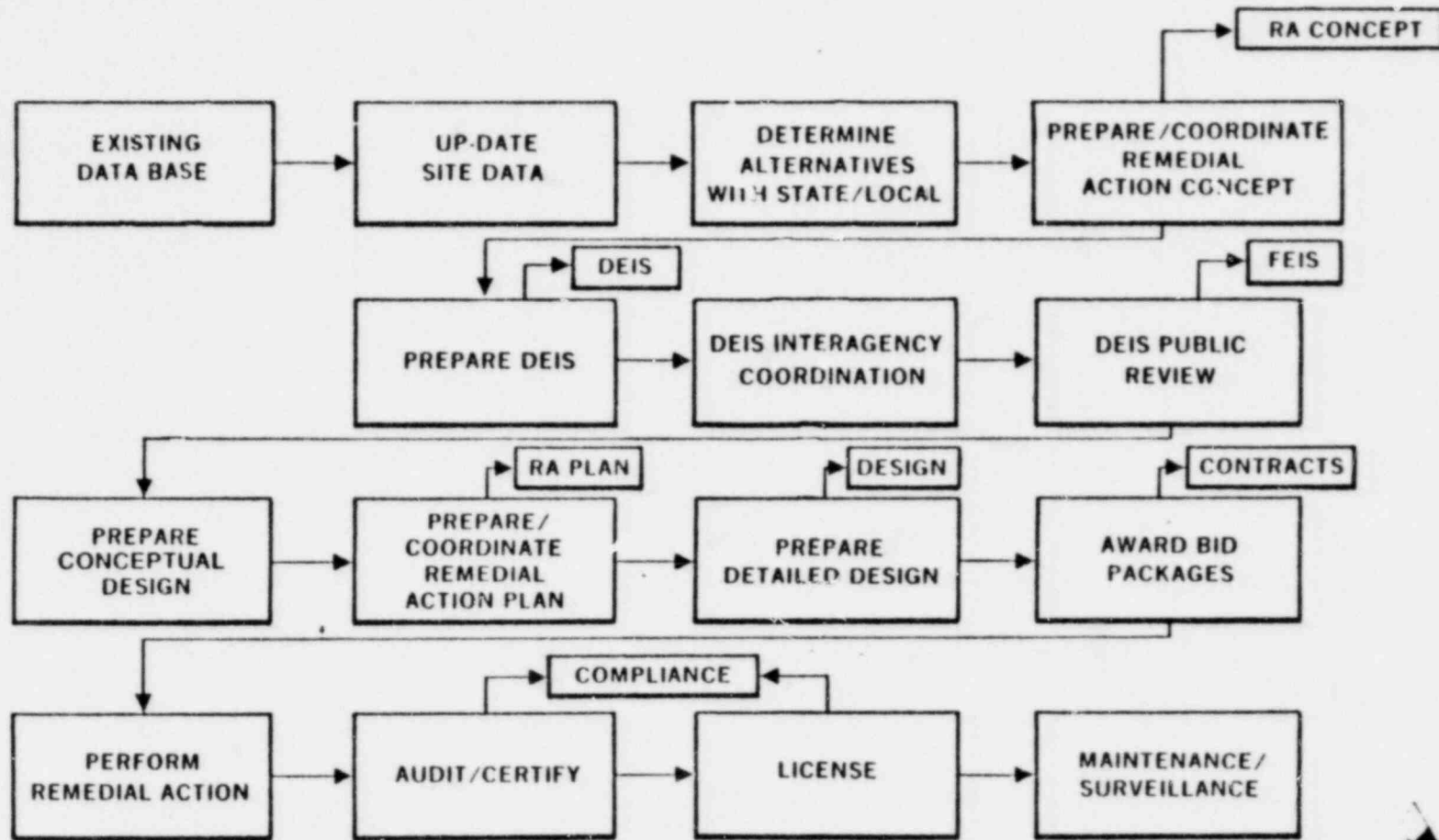


UMTRA PROJECT OFFICE FUNCTIONS

- PLANNING AND SCHEDULING
- DETERMINE RESOURCE REQUIREMENTS
- CONTRACTOR SELECTION AND MANAGEMENT
- STATE/TRIBE/LOCAL COORDINATION
- PUBLIC PARTICIPATION/INFORMATION
- NEPA
- REPROCESSING
- TECHNOLOGY
- SITE ACQUISITION
- ENGINEERING
- REMEDIAL ACTIONS
- LICENSING
- MAINTENANCE AND SURVEILLANCE
- PROJECT CONTROL



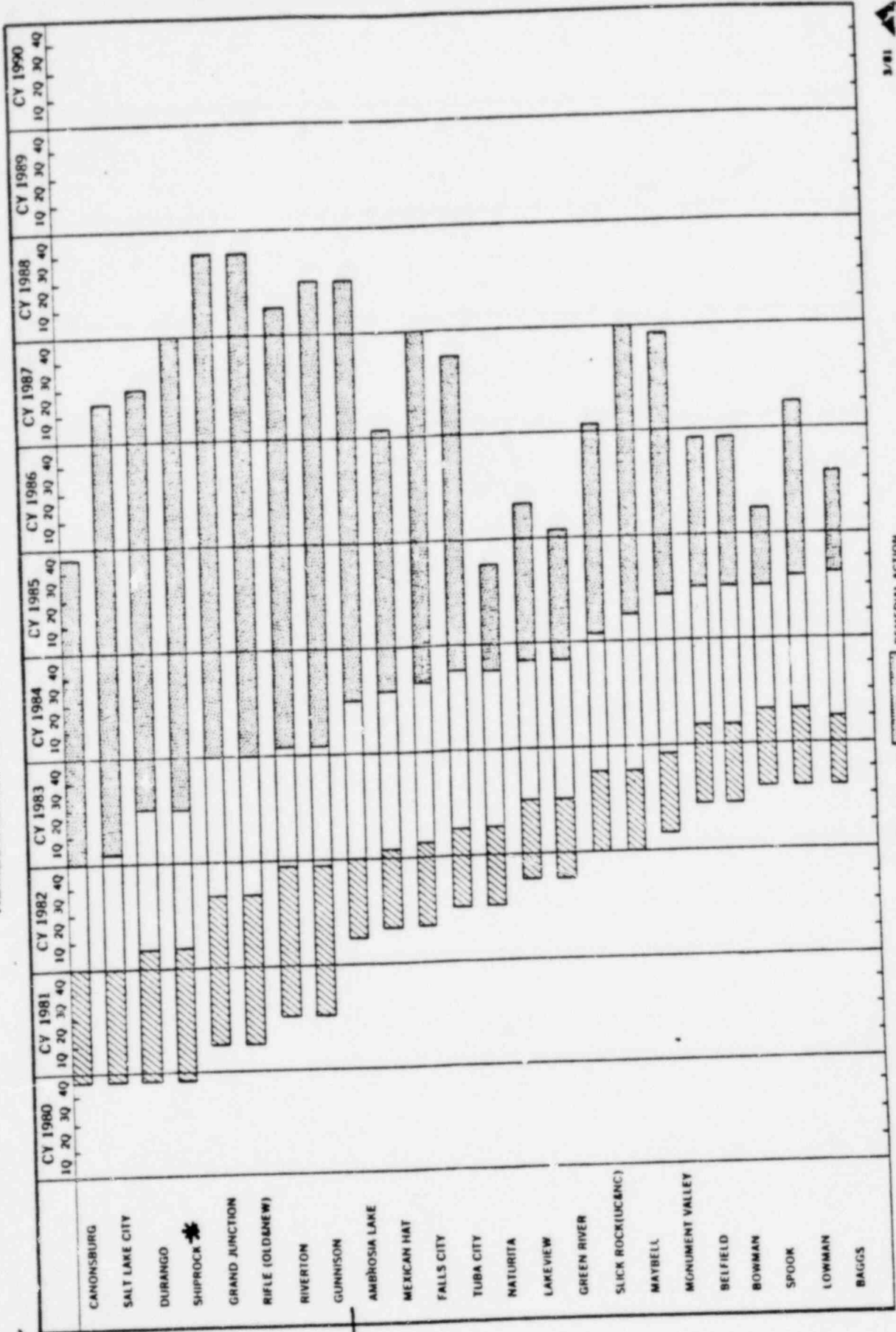
UMTRA ACTIVITIES FLOW DIAGRAM



UMTRA PROJECT ELEMENT SCHEDULE

PWBS ELEMENT	CY1980	CY1981	CY1982	CY1983	CY1984	CY1985	CY1986	CY1987	CY1988
PLANNING & STUDIES									
ENGINEERING									
OFF-SITE PROPERTIES									
NEPA-EIS									
NEPA-EA									
TECHNOLOGY DEVELOPMENT									
SITE ACQUISITIONS									
SITE REMEDIAL ACTIONS									
MAINT. & SURV.									
TECH/MGMT SUPPORT									

REMEDIAL ACTION PROJECT MASTER SCHEDULE



NEPA PROCESS [diagonal hatching] PLANNING, DESIGN, & CONTRACT AWARD [white] REMEDIAL ACTION [stippled]

*Schedule
based on
work
to be
completed*

** may not be moved*

PRELIMINARY PROJECT COST ESTIMATE
(1981 \$000)

3/81



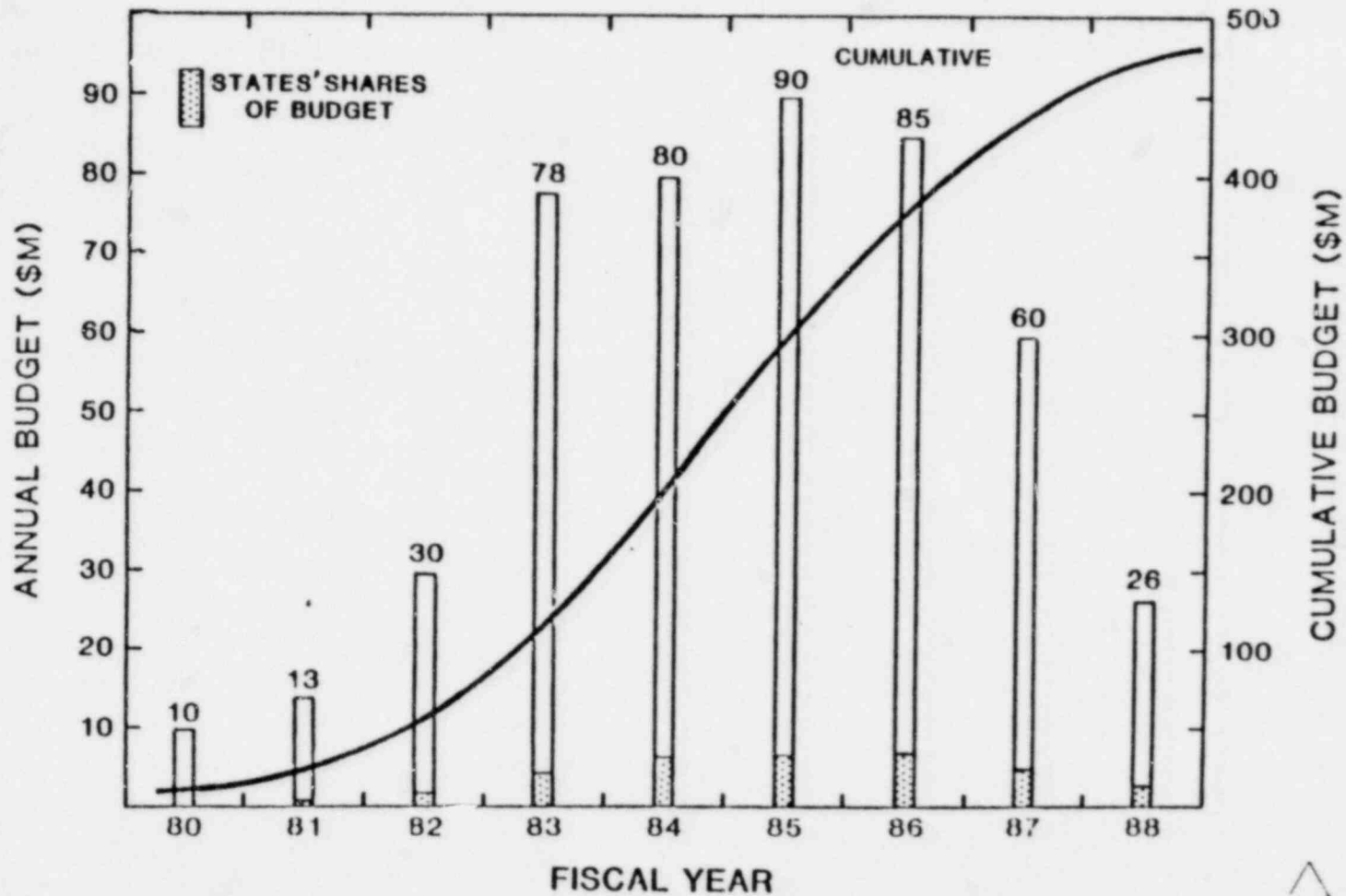
COST ELEMENT	FY80	FY81	FY82	FY83	FY84	FY85	FY86	FY87	FY88	TOTAL
PLANNING/STUDIES	829	1234	3571	2790	2790	2790	2511	1725	1290	19530
ENGINEERING		1646	8785	14676	8608	5468	3940	2980	1300	47,403
NEPA	556	2000	3905	2440	650					9551
TECHNOLOGY	2100	5046	4686	3522	1942	525				17,821
SITE ACQUISITION		1000	2940	2770	1070	170				7,950
REMEDIAL ACTION		1500	5244	28101	54310	73360	73700	54200	18790	309,205
MAINT & SURV				525	525	525	1475	1853	2522	7,425
TECH/MGMT SUPPORT	1205	2767	7352	7684	8064	8331	7865	6809	5350	55,427
TOTAL (1981 DOLLARS)	4690	15193	36483	62508	77959	91169	89491	67567	29252	474,312
TOTAL (ESCALATED DOLLARS @ 10%)	4,690	15,193	40,131	75,635	103,763	133,471	144,170	119,729	57,012	693,794

State share is 10% of these

(includes state costs)
(excludes NRC, EP)

(INCLUDES 30% CONTINGENCY)

UMTRA PROJECT BUDGET PROFILE (BUDGET AUTHORITY) 1981 DOLLARS



ESTIMATED COSTS FOR STATES (IN THOUSANDS OF 1981 DOLLARS)

STATE	1980	1981	1982	1983	1984	1985	1986	1987	1988	TOTAL
PENNSYLVANIA		200	335	450	466	389	81			1,921
UTAH		152	685	1,999	1,896	1,959	1,823	895		9,409
COLORADO			541	1,586	2,510	2,956	3,019	2,590	1,280	14,482
WYOMING				164	214	361	382	314	141	1,576
NEW MEXICO				22	185	315	315	315	234	1,386
TEXAS					226	457	457	457	160	1,757
OREGON					55	177	121			353
NORTH DAKOTA						40	160	30		230
IDAHO						80	221	134		435
TOTAL		352	1,561	4,221	5,552	6,734	6,579	4,735	1,815	31,549
PROJECT TOTAL	4,690	15,193	36,483	62,508	77,959	91,169	89,491	67,567	29,252	474,312
NET PROJECT COST	4,690	14,841	34,922	58,287	72,407	84,435	82,912	62,832	27,437	442,763

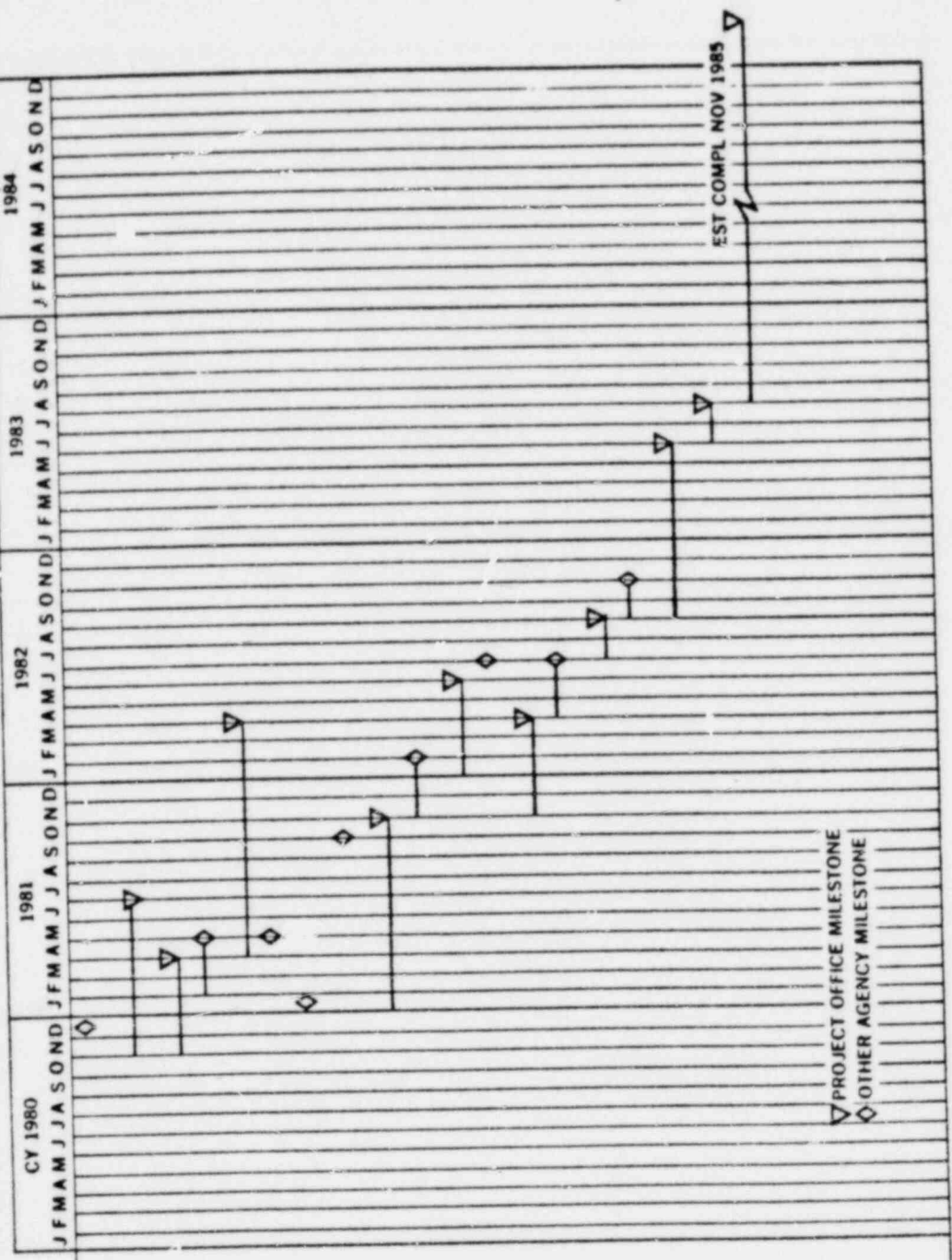
CANONSBURG STATUS

- COOPERATIVE AGREEMENT EXECUTED
- COORDINATING TASK FORCE IDENTIFIED (HAS NOT MET)
- STATE IDENTIFIED TWO CANDIDATE DISPOSAL SITES
- WESTON PREPARING EIS
- DRAFT RACP IN COORDINATION
- NO REPROCESSING
- APPRAISAL INSTRUCTIONS SENT TO STATE
- RELOCATION OF TENANTS THIS YEAR
- INTERIM STORAGE OF VICINITY PROPERTY MATERIALS



4/81

REMEDIAL ACTION SCHEDULE FOR CANONSBURG SITE



▽ PROJECT OFFICE MILESTONE
◇ OTHER AGENCY MILESTONE

EST COMPL NOV 1985

CANONSBURG PRELIMINARY COST ESTIMATE (1981 \$000)

	<u>FY</u> <u>81</u>	<u>FY</u> <u>82</u>	<u>FY</u> <u>83</u>	<u>FY</u> <u>84</u>	<u>FY</u> <u>85</u>	<u>FY</u> <u>86</u>	<u>FY</u> <u>87</u>	<u>FY</u> <u>88</u>	<u>TOTAL</u>
NEPA	400	200							600
ENG.		780	200	150	150	150			1430
SITE ACQ.	1000								1000
REMEDIAL ACTION		300	1800	2380	2380	500			7360
MAINT. & SURV.						40	100	100	240
SUBTOTAL	<u>1400</u>	<u>1280</u>	<u>2000</u>	<u>2530</u>	<u>2530</u>	<u>690</u>	<u>100</u>	<u>100</u>	<u>10,630</u>
30% CONTINGENCY	<u>520</u>	<u>380</u>	<u>600</u>	<u>760</u>	<u>760</u>	<u>200</u>	<u>30</u>	<u>30</u>	<u>3280</u>
TOTAL	1920	1660	2600	3290	3290	890	130	130	13,910
ESCALATED BUDGET TOTAL (10%)	1920	1830	3150	4380	4820	1430	230	250	18,010

STATUS OF CANONSBURG VICINITY PROPERTIES

- INTERIM EPA STANDARDS AVAILABLE
- ESTIMATE 60 POTENTIAL LOCATIONS (EST. COST - \$7.2 MILLION)
- 26 LOCATIONS DESIGNATED
- ORO SUPPORT FOR FIRST INCREMENT (HIGH PRIORITY LOCATIONS)
- NLO CONTRACTOR FOR ORO (\$1.3 MILLION TO ORO FOR FY 81)
- PLANNING MEETING WITH ORO/NLO IN EARLY APRIL
- START ENGINEERING ON INITIAL GROUP — MAY 1981
- START REMEDIAL ACTION AT FIRST LOCATIONS BY END OF FY 1981
- REQUIRE INTERIM STORAGE AT PROCESSING SITE



SALT LAKE CITY STATUS

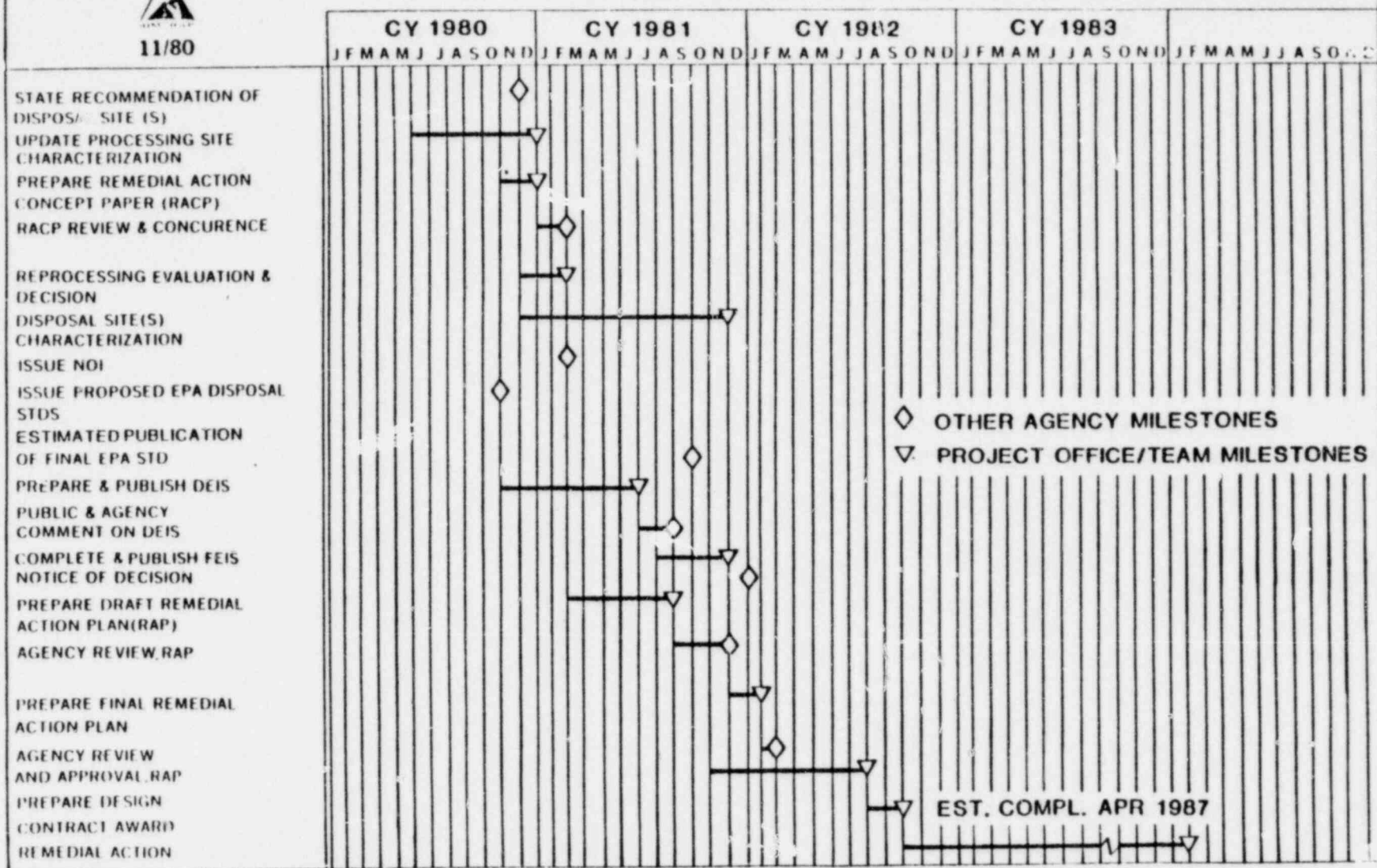
- COOPERATIVE AGREEMENT EXECUTED
- COORDINATING TASK FORCE FORMED (HAS MET)
- STATE IDENTIFIED THREE CANDIDATE DISPOSAL SITES
- BLM CONTACTED FOR SITE PREFERRED BY STATE
- DAMES & MOORE PREPARING EIS
- EIS NOTICE OF INTENT SENT TO HQS FOR PUBLICATION
- EIS SCOPING MEETINGS SCHEDULED ^{May 5, 6} ~~APRIL 16-17~~, 1981
- RACP DRAFT COMPLETED (SNLA)
- TAILINGS ASSAY TO BE ACCOMPLISHED
- INTERIM STORAGE OF VICINITY PROPERTY MATERIALS





11/80

REMEDIAL ACTION SCHEDULE FOR SALT LAKE CITY SITE



SALT LAKE CITY PRELIMINARY COST ESTIMATE (1981 \$000)

	<u>FY81</u>	<u>FY82</u>	<u>FY83</u>	<u>FY84</u>	<u>FY85</u>	<u>FY86</u>	<u>FY87</u>	<u>FY88</u>	<u>TOTAL</u>
NEPA	400	200							600
ENG.		3,570	500	300	300	300	300		5270
SITE ACQ.		450							450
REMEDIAL ACTION		210	13,660	13,660	13,660	13,660	6,860		61,710
MAINT. & SURV.							100	100	200
SUBTOTAL	<u>400</u>	<u>4,430</u>	<u>14,160</u>	<u>13,960</u>	<u>13,960</u>	<u>13,960</u>	<u>7,260</u>	<u>100</u>	<u>68,230</u>
30% CONTINGENCY	<u>120</u>	<u>1,350</u>	<u>4,250</u>	<u>4,190</u>	<u>4,190</u>	<u>4,190</u>	<u>2,180</u>	<u>30</u>	<u>20,500</u>
TOTAL	<u>520</u>	<u>5,780</u>	<u>18,410</u>	<u>18,150</u>	<u>18,150</u>	<u>18,150</u>	<u>9,440</u>	<u>130</u>	<u>88,730</u>
ESCALATED BUDGET									
TOTAL (10%)	520	6,368	22,280	24,140	26,570	29,240	16,730	255	126,095

STATUS OF SLC VICINITY PROPERTIES

- INTERIM STANDARDS AVAILABLE
- 79 POTENTIAL LOCATIONS (EST. COST - \$7.3 MILLION)
- 22 LOCATIONS DESIGNATED
- FBDO ON CONTRACT FOR ENGINEERING; DIRECT DOE CONTRACTS FOR REMEDIAL ACTION WORK
- CVWRFB AGREEMENT FOR INTERIM STORAGE AT VITRO SITE
- START FIRE STATION END OF MAY 1981
- SECOND LOCATION: SEWAGE TREATMENT PLANT



SLC FIRE STATION STATUS

- NEPA APPROVAL ON 3/13/81
- NRC CONCURRENCE EXPECTED BY 4/3/81
- MEETING WITH STATE AND CVWRFB ON 3/16/81. MOU MUST BE IN PLACE BEFORE CLEAN-UP STARTS
- INVITATION FOR BIDS ISSUED 3/20/81. BID OPENING SCHEDULED FOR 4/16/81
- CONTRACT AWARD ON ABOUT 5/18/81
- NEED EP CONCURRENCE ON RADIOLOGICAL CONTROL PLAN (SUBMITTED TO HQS ON 3/12/81)
- MUST HAVE STATE AND COUNTY CONCURRENCE ON REMEDIAL ACTION PRIOR TO START
- ESTIMATE GROUND-BREAKING ON 5/28/81
- COSTS: ENGINEERING - \$119K CLEAN-UP - \$750K
TOTAL - \$869K



CENTRAL VALLEY VICINITY SITE STATUS

- INTERFACE WITH SEWAGE TREATMENT PLANT EXPANSION
- SITE ALREADY DESIGNATED
- PRIORITY RAISED TO HIGH BY HQS/EP
- REA INITIATED BY CONTRACTOR (FBDU)
- SITE CLEAN-UP TO BE STARTED ASAP
- PARTIAL EXCEPTION MAY BE REQUESTED
- COST ESTIMATE - TBD



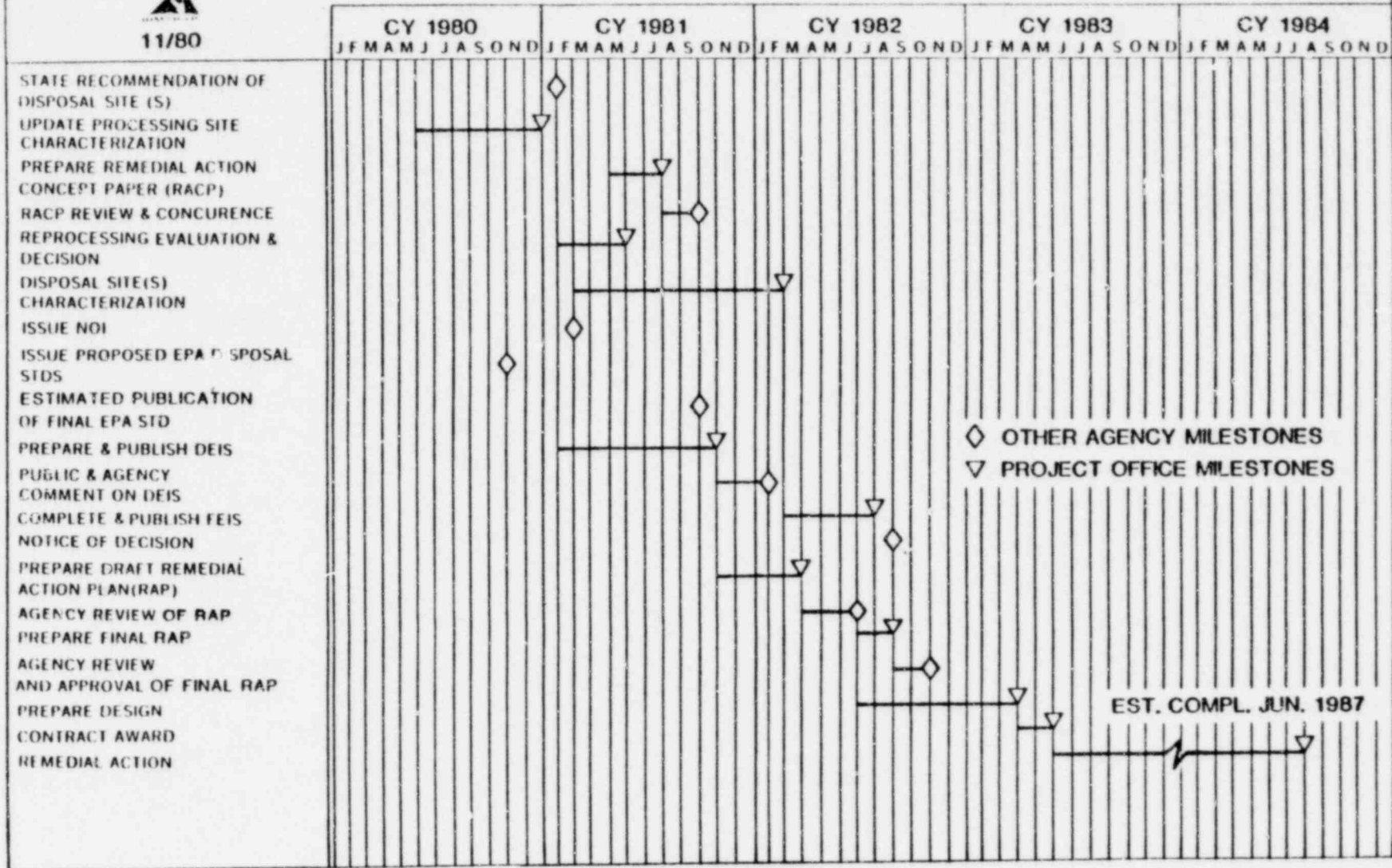
DURANGO STATUS

- DRAFT COOPERATIVE AGREEMENT UNDER REVIEW BY STATE
- COORDINATING TASK FORCE FORMED (HAS MET)
- STATE SITE SELECTION COMMITTEE OPERATIONAL
- FOUR CANDIDATE DISPOSAL SITES IDENTIFIED BY STATE
↳ Rabbit Mountain to be eliminated.
- DAMES & MOORE TO PREPARE EIS
- SNLA DRAFTING RACP





REMEDIAL ACTION SCHEDULE FOR DURANGO SITE



DURANGO PRELIMINARY COST ESTIMATE (1981 \$000)

	FY 81	FY 82	FY 83	FY 84	FY 85	FY 86	FY 87	FY 88	TOTAL
NEPA	400	200							600
ENGINEERING		1,130	2,270	250	250	250	250		4,400
SITE ACQ.		1,900							1,900
REM. ACTION			1,620	6,480	6,480	6,480	4,850		25,910
MAINT. & SURV.							100	100	200
SUBTOTAL	400	3,230	3,890	6,730	6,730	6,730	5,200	100	33,010
30% CONTINGENCY	120	970	1,170	2,020	2,020	2,020	1,560	30	9,910
TOTAL	520	4,200	5,060	8,750	8,750	8,750	6,760	130	42,920
ESCALATED BUDGET TOTAL (10%)	520	4,620	6,120	11,650	12,810	14,100	11,980	250	62,050



SHIPROCK STATUS

- DRAFT COOPERATIVE AGREEMENT NOT COMPLETED
 - CHAPTER COORDINATION INITIATED
 - DISPOSAL SITE AREAS IDENTIFIED
 - DAMES & MOORE TO PREPARE EIS
 - SNLA DRAFTING RACP
 - STRONG CONSIDERATION OF IN-PLACE STABILIZATION
↳ Navajos leaning to this approach
- excavation, slight relocation, partially above ground.*



SHIPROCK PRELIMINARY COST ESTIMATE

(1981 \$000)

	FY 81	FY 82	FY 83	FY 84	FY 85	FY 86	FY 87	FY 88	TOTAL
NEPA	400	200							600
ENG.		370	770	200	200	200	200	200	2140
REMEDIAL ACTION			940	3760	3760	3760	3760	920	16900
MAINT. & SURV.								<u>100</u>	<u>100</u>
SUBTOTAL	400	570	1710	3960	3960	3960	3960	1220	19740
~30% CONTINGENCY	120	170	510	1190	1190	1190	1190	340	<u>5920</u>
TOTAL	520	740	2220	5150	5150	5150	5150	1590	<u>25660</u>
ESCALATED TOTAL (10%)	520	810	2690	6850	7540	8290	9120	3100	38920

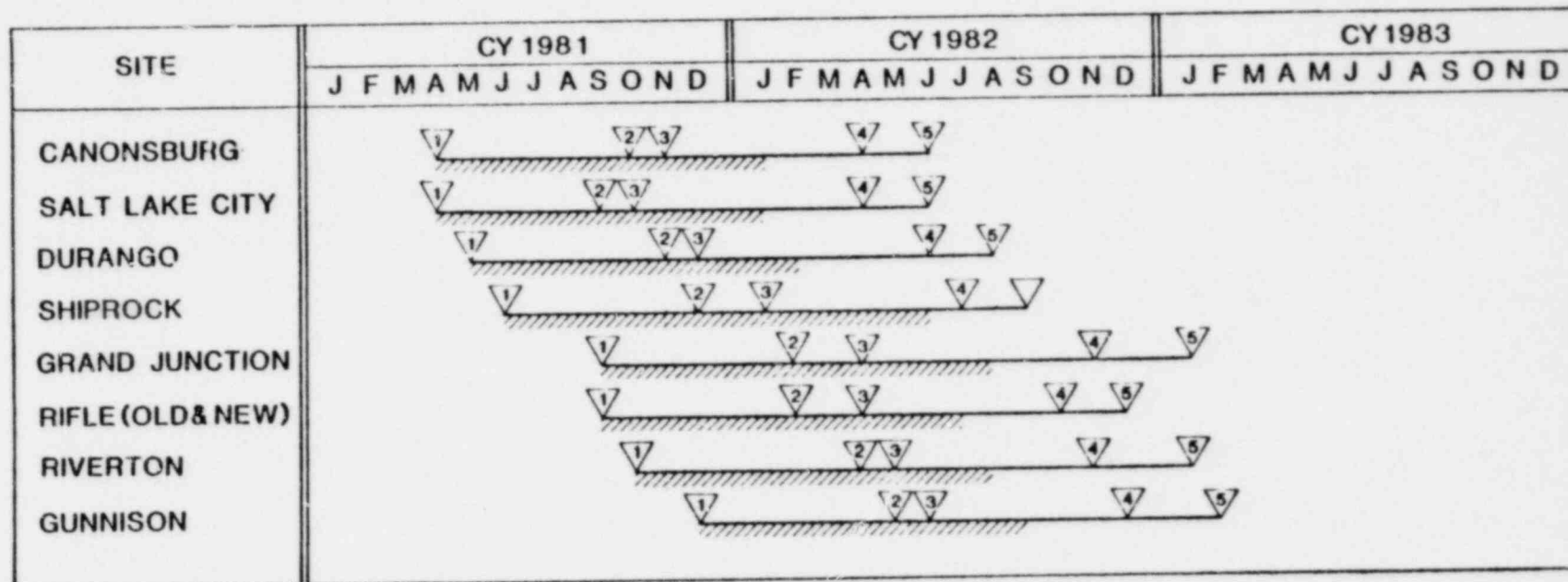


NEPA ACTIVITY STATUS

- SNLA MANAGE ALL NEPA ACTIVITIES
- EIGHT ENVIRONMENTAL IMPACT STATEMENTS (9 SITES)
 - WESTON ON CANONSBURG
 - DAMES & MOORE ON SALT LAKE CITY, DURANGO, SHIPROCK
 - TBD ON GRAND JUNCTION, RIVERTON, RIFLE, GUNNISON
- FIFTEEN ENVIRONMENTAL ASSESSMENTS
 - SNLA USE FORD, BACON & DAVIS UTAH (FBDU)
 - SOME EA SITES COULD BECOME EIS SITES
- EIS'S ON CRITICAL PATH
 - EIS SCOPE REQUIRES DISPOSAL SITES
 - REPROCESSING DECISION CAN AFFECT EIS
 - DATA FOR ONE YEAR



NEPA-EIS SCHEDULE



LEGEND:

DATA ACQUISITION PERIOD

NOI PUBLISHED

DEIS TO DOE/NRC

FIRST PUBLIC HEARING

FEIS TO DOE/NRC

NOTICE OF DECISION IN FR
Record

TECHNOLOGY DEVELOPMENT PROGRAM

COVERINGS TECHNOLOGY
ASPHALT EMULSION
SINGLE COVERS
COMPOSITE COVERS
BIOBARRIERS
REVEGETATION

MEASUREMENTS/ MONITORING
RADIOLOGICAL DATA
INSTRUMENTATION

TAILINGS CONDITIONING/ MINERAL RECOVERY
REPROCESSING
RECONDITIONING

LINERS TECHNOLOGY
LINERS SYSTEMS: ASPHALT CLAY OTHER

BASIC STUDIES
GEOCHEMICAL/ GEOTECHNICAL STUDY
INTERIM RADIATION REDUCTION SYSTEMS
CONTAMINANT TRANSPORT STUDY
HYDROLOGY



UMTRAP TECHNOLOGY WORKING GROUP

MARK L. MATTHEWS (DOE) -
CHAIRMAN

PAUL O'BRIEN (SNLA) -
VICE-CHAIRMAN, SECRETARY

DAN MARTIN (NRC)

JIM HARTLEY (PNL)

W. CHAPPELL (UC)

VERN ROGERS (RAEC)

COVERINGS TASK GROUP

G. GEE (PNL) -
CHAIRMAN

L. CALDWELL (PNL)

J. CLINE (PNL)

R. OVERMEYER (FBDO)

V. ROGERS (RAEC)

K. BUSH (SDSM)

M. DEWITTE (SNLA)

J. HARTLEY (PNL)

LINERS TASK GROUP

V. HALE (PNL) -
CHAIRMAN

T. TAMURA (ORNL)

M. DEWITTE (SNLA)

G. MARKOS (SDSM)

J. NELSON (CSU)

J. BUELT (PNL)

CONDITIONING/ REPROCESSING TASK GROUP

P. O'BRIEN (SNLA) -
CHAIRMAN

D. DREESEN (LANSL)

A. RYON (ORNL)

L. HANCHEY (SNLA)

TECHNOLOGY DEVELOPMENT COSTS (1981 \$000)

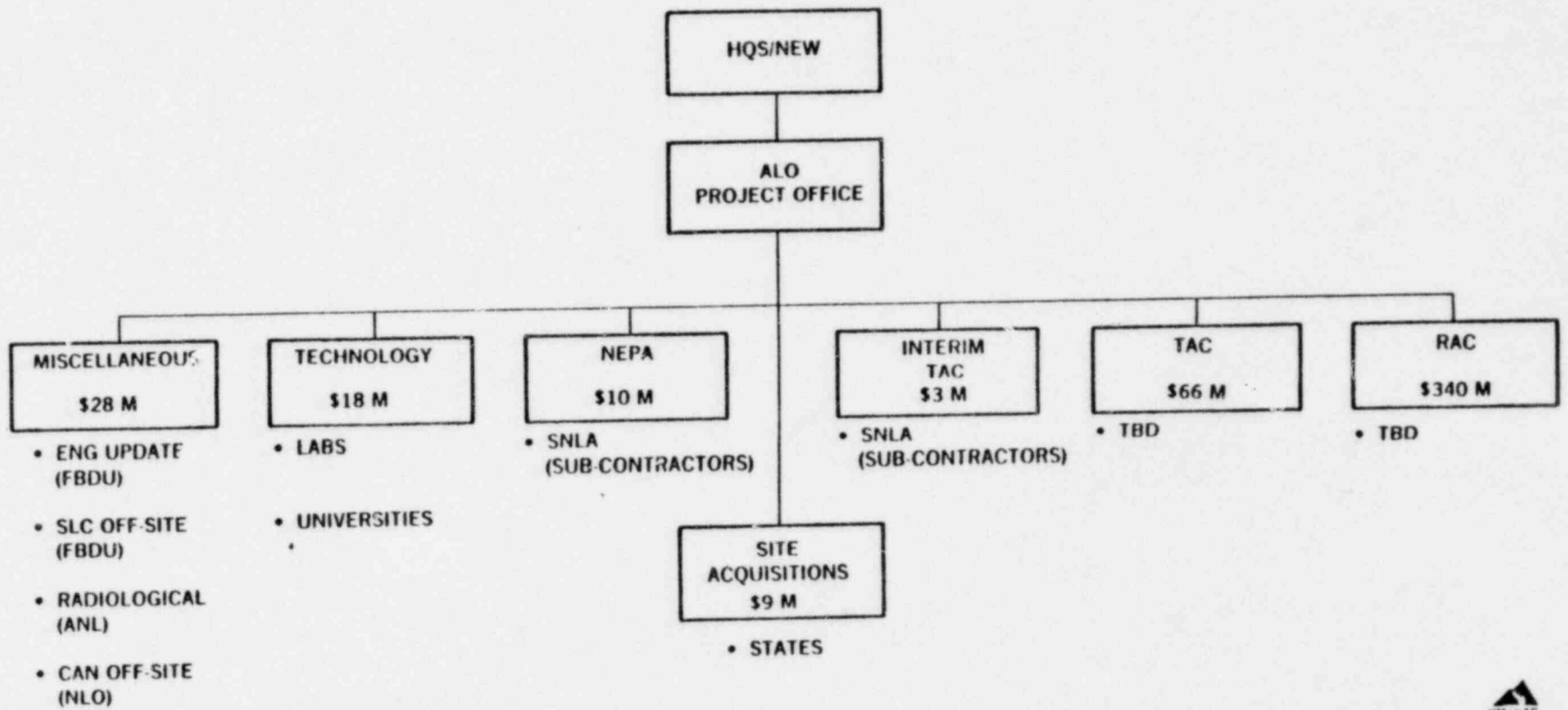
TASK	PERFORMER	FISCAL YEAR					TOTAL	
		1980	1981	1982	1983	1984		
ASPHALT EMULSION	PNL	789	450	600	500	500	2,839	
BIO BARRIERS	PNL	215	350	125	50		740	
MULTILAYER COVERS	PNL	312	1,400	590	200	200	2,702	
GROUND WATER	CU	464	760	650	550		2,424	
RADON DIFFUSION	FBDU	72	261				333	
CONDITIONING	LANL	91	425	250	150	100	1,016	
REVEGETATION	PNL	61	400	200	150		811	
LINERS	PNL	96	300	250	175	100	921	
LINERS	ORNL		100	250	175	100	625	
REPROCESSING	ORNL		225	250	150		625	
HYDROLOGY	LBL		375	350	250	150	1,125	
SUPPORT/RESERVE	TAC			1,171	1,172	792	525	3,660
TOTALS		2,100	5,046	4,686	3,522	1,942	525	17,821

REPROCESSING STATUS

- P.L. 95-604 REQUIRES CONSIDERATION OF REPROCESSING
- LETTERS TO OWNERS AND NOTICE TO THIRD PARTIES IN EARLY 1980
- OWNERS HAVE RESERVED RIGHTS; GENERAL INTEREST BY 12 FIRMS
- MULTI-SITE PROPOSAL BY ERM
- SNLA (MOUNTAIN STATES) TO BEGIN ASSAYS AT 14 SITES
- REQUESTS FOR PROPOSALS AFTER ASSAY DATA EVALUATED
- REPROCESSING POTENTIAL MARGINAL (URANIUM MARKET WEAK)
- ✓• EARLY EIS'S ASSUME NO REPROCESSING



ACQUISITION STRUCTURE



TECHNICAL ASSISTANCE CONTRACTOR (TAC)

- **PROVIDE TECHNICAL AND MANAGEMENT SUPPORT TO PROJECT OFFICE**
- **THREE-YEAR CONTRACT WITH TWO 2-YEAR OPTIONS**
- **\$66 MILLION (EST.)**
- **LOCATION IN ALBUQUERQUE**
- **SCOPE - PLANNING & STUDIES
TECHNOLOGY DEVELOPMENT
MAINTENANCE & SURVEILLANCE
TECH/MGMT SUPPORT**
- **SELECTION BY SEPTEMBER 1981; OPERATIONAL ASAP**



TAC SELECTION & AWARD SCHEDULE



1981

1982

ACTIVITY	JAN	FEB	MAR	APR	MAY	JUN	JUL	AUG	SEP	OCT	NOV	DEC	JAN	FEB
INITIATE PR (1/14/81)	◇													
SSO DELEGATION (1/16/81)	◇													
CBD ANNOUNCEMENT (1/19/81)	◇													
1370.1 APPROVAL			—	◇										
ESTABLISH SEB (3/3/81)		◇												
SRP				◇										
ISSUE RFP				◇										
PROPOSAL PREPARATION				—	—	◇								
PRE-PROPOSAL CONFERENCE					◇									
PROPOSAL EVALUATION						—	—	◇						
BIDDER INTERVIEWS							—	◇						
SELECTION									◇					
NEGOTIATION & REVIEW									—	—	◇			
AWARD												◇		

TAC COST ESTIMATE (1981 \$000)

	FY 82	FY 83	FY 84	FY 85	FY 86	FY 87	FY 88	TOTAL
PLANNING & STUDIES	3,231	2,790	2,790	2,790	2,511	1,725	1,290	17,127
TECHNOL. DEVELOP.	1,171	1,172	792	525				3,660
MAINT./SURV.		525	525	525	1,475	1,853	2,522	7,425
TECH/MGMT SUPPORT	5,302	5,384	5,764	6,031	6,165	5,309	4,050	38,005
TOTALS	<u>9,704</u>	<u>9,871</u>	<u>9,871</u>	<u>9,871</u>	<u>10,151</u>	<u>8,887</u>	<u>7,862</u>	<u>66,217</u>

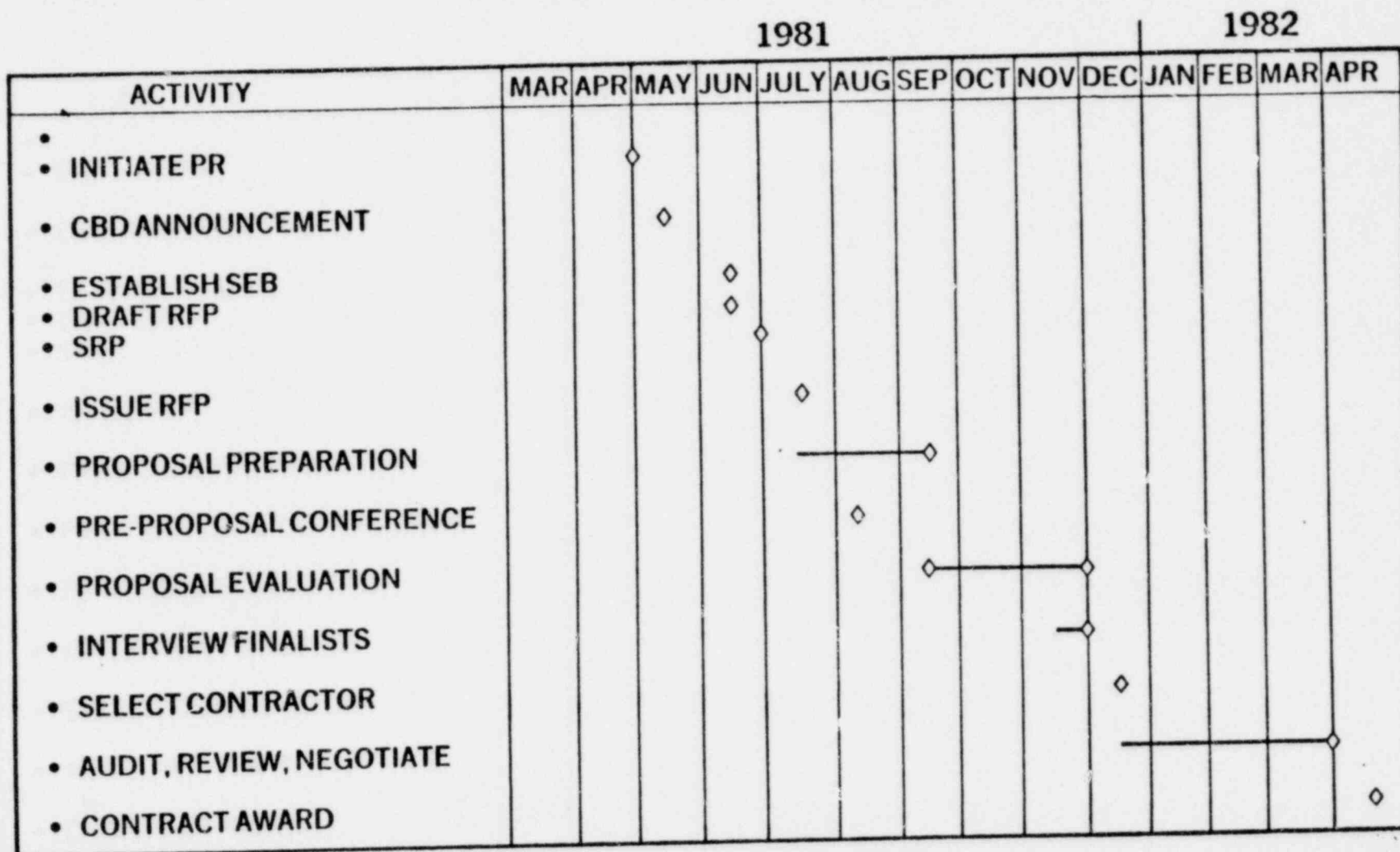


REMEDIAL ACTION CONTRACTOR (RAC)

- PERFORM ENGINEERING DESIGN, AWARD SITE SUB-CONTRACTS, AND MANAGE SITE REMEDIAL ACTIONS (VICINITY SITES INCLUDED)
- CONTRACT TERM AND FORM - TBD
- HOME OFFICE LOCATION
- \$338 MILLION (EST.)
- SOW DRAFT IN PREPARATION
- ACTIVITIES START WITH BSG WEEK OF 3/23/81
- SELECTION NEEDED BY END OF CY 1981



RAC SELECTION & AWARD SCHEDULE (EST)



RAC COST ESTIMATE (1981 \$000)

	FY 82	FY 83	FY 84	FY 85	FY 86	FY 87	FY 88	TOTAL
ENGINEERING	6,280	10,950	6,410	4,120	3,150	2,380	1,040	34,330
REMEDIAL ACTIONS	1,380	18,900	41,250	57,510	58,960	43,360	15,030	236,390
SUB-TOTALS	7,660	29,850	47,660	61,630	62,110	45,740	16,070	270,720
CONTINGENCY (25%)	1,920	7,460	11,910	15,410	15,530	11,440	4,020	67,690
TOTALS	9,580	37,310	59,570	77,040	77,640	57,180	20,090	338,410

PLANNING STATUS

- PUBLIC INFORMATION PLAN - DRAFT IN REVIEW BY ALO/PAO
- PUBLIC PARTICIPATION PLAN - FINAL DRAFT FOR REVIEW 3/17/81
- DISPOSAL SITE QUALIFICATION CRITERIA - PROJECT OFFICE REVIEWING DRAFT
- QA PLAN - DRAFT IN REVIEW BY PROJECT OFFICE
- HEALTH & SAFETY PLAN - PUBLISHED
- TECHNOLOGY DEVELOPMENT PLAN - DRAFT PLANNED FOR 4/17/81
- NEPA IMPLEMENTATION PLAN - FINAL DRAFT IN PREPARATION
- EIS FORMAT GUIDE - PUBLISHED
- EIS SCOPE & CONTENT GUIDE - PUBLISHED
- EA GUIDELINES - FINAL DRAFT IN COORDINATION
- SITE CHARACTERIZATION PLAN - NOT DRAFTED
- PROJECT PLAN - 2ND DRAFT READY FOR REVIEW
- PROJECT MANAGEMENT PLAN - NOT DRAFTED; RESOURCES NEEDED
- PROJECT CONTROL PLAN - NOT DRAFTED
- PROJECT COST ESTIMATE - 3RD EDITION COMPLETED; ICE IN FALL 1981
- PROJECT SCHEDULES-REVIEW AND REISSUE BY JULY 1981
- UP-DATED ENGINEERING ASSESSMENT REPORTS-DRAFT REVIEW PROCESS ON-GOING



UMTRA FINANCIAL PLAN - FY 1980-83



ELEMENT	FY 1980			FY 1981		FY 1982		FY 1983	
	BA	ACTUAL	GSO	BA	BO	BA	BO	BA	BO
05 PLANNING/STUDIES	1,920	829	1,091	662	1,234	3,421	3,571	2,900	2,790
10 ENGINEERING	208		208	2,090	1,646	7,000	6,085	19,475	17,186
15 ENVIRONMENTAL	2,237	556	1,681	900	2,000	3,800	3,905	2,200	2,440
20 TECHNOLOGY	3,110	2,100	1,010	4,615	5,046	4,430	4,686	3,467	3,522
25 SITE ACQUISITION				1,000	1,000	1,000	1,000	4,710	4,710
30 REMEDIAL ACTIONS				2,000	1,500	4,500	3,744	35,000	28,901
35 MAINT. & SURV.								525	525
40 MGMT/TECH SUPPORT	<u>2,614</u>	<u>1,205</u>	<u>1,409</u>	<u>1,933</u>	<u>2,597</u>	<u>6,174</u>	<u>5,109</u>	<u>10,384</u>	<u>9,927</u>
TOTALS	10,089	4,690	5,399	13,200	15,023	30,325	28,100	78,661	70,001

FY 1981 MILESTONE STATUS

MILESTONE	SCHEDULE	11/80 ESTIMATE	CURRENT ESTIMATE	REMARKS
1. SELECT TAC CONTRACTOR	6/81	6/81	8/81	SEE SCHEDULE ESTABLISHED
2. SELECT RAC CONTRACTOR	9/81	7/81	12/81	DELAY IN RFP PREPARATION
3. INITIATE EIS'S AT FIRST FOUR SITES	2/81	2/81	2/81	ACCOMPLISHED
4. PUBLISH NEPA IMPLEMENTATION PLAN	12/80	1/81	4/81	COORDINATION EXTENDED
5. PUBLISH RACP'S FOR FIRST FOUR SITES	2/81	3/81	5/81	DISPOSAL SITE SELECTION LATE
6. INITIATE ENGINEERING FOR SALT LAKE CITY OFF-SITE PROPERTIES	10/80	10/80	10/80	ACCOMPLISHED
7. INITIATE ENGINEERING FOR CANONSBURG OFF-SITE PROPERTIES	9/81	6/81	6/81	USE OAK RIDGE OPNS
8. CONTINUE TECHNOLOGY DEVELOPMENT	-	-	-	
9. ACQUIRE CANONSBURG PROCESSING SITE	6/81	6/81	9/81	DELAY IN APPRAISAL
10. PUBLISH PROJECT PLAN	12/80	2/81	6/81	DRAFT COMPLETION LATE
11. PUBLISH PROJECT MANAGEMENT PLAN	1/81	3/81	9/81	DRAFT COMPLETION LATE
12. COMPLETE ENGINEERING REPORT UP-DATE	3/81	3/81	6/81	DRAFT REVIEW DELAYED
13. PUBLISH PUBLIC PARTICIPATION PLAN	2/81	2/81	6/81	EXTENDED DRAFT REVIEW

FY 1982 MILESTONES

- **COMPLETE EIS's FOR SEVEN HIGH PRIORITY SITES**
- **CONTINUE EIS's FOR TWO ADDITIONAL HIGH PRIORITY SITES**
- **COMPLETE EA's FOR THIRTEEN SITES**
- **INITIATE EA's FOR THREE SITES**
- **PUBLISH RAP's FOR FOUR HIGH PRIORITY SITES**
- **DRAFT RAP's FOR FIVE ADDITIONAL HIGH PRIORITY SITES**
- **ACQUIRE DISPOSAL SITES FOR FOUR HIGH PRIORITY SITES**
- **SELECT DISPOSAL SITES FOR THREE ADDITIONAL HIGH PRIORITY SITES**
- **IDENTIFY CANDIDATE DISPOSAL SITES FOR TWO ADDITIONAL HIGH PRIORITY SITES**
- **PUBLISH RACP's FOR LAST TWO HIGH PRIORITY SITES**
- **DRAFT RACP's FOR EIGHT MEDIUM AND LOW PRIORITY SITES**
- **EXECUTE COOPERATIVE AGREEMENTS FOR EIGHT MEDIUM AND LOW PRIORITY SITES**
- **INITIATE DETAILED DESIGN FOR FOUR HIGH PRIORITY SITES**
- **CONTINUE VICINITY PROPERTY CLEAN-UP AT SALT LAKE CITY AND CANONSBURG**

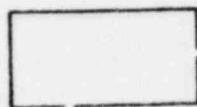


PROJECT MANAGER'S ASSESSMENT

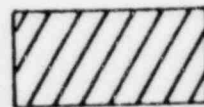


CATEGORY	11/80	3/81				
PLANNING	CONCERN	CONCERN				
TECHNOLOGY						
NEPA	CONCERN	CONCERN				
STATE/LOCAL	CONCERN					
REPROCESSING	PROBLEM	CONCERN				
CONTRACTS	PROBLEM	CONCERN				
FUNDING						
SCHEDULE	CONCERN	CONCERN				
OVERALL PROJECT	CONCERN	CONCERN				

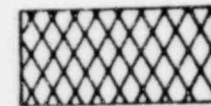
KEY:



NO PROBLEM



CONCERN



PROBLEM