

ELECTRICAL POWER SYSTEMS

LIMITING CONDITION FOR OPERATION - (Cont'd)

ACTION - (Cont'd)

- b. With one electrical feed from 2400-volt bus 1A or 1B to the associated essential switchgear bus inoperable and with diesel generator 1A or 1B inoperable, demonstrate the OPERABILITY of the remaining A.C. sources by performing Surveillance Requirements 4.8.1.1.1.a and 4.8.1.1.2.a.4 within one hour and at least once per 8 hours thereafter; restore at least one of the inoperable sources to OPERABLE status within 12 hours or be in at least HOT SHUTDOWN within the next 12 hours. Restore both electrical feeds and both diesel generators to OPERABLE status within 72 hours from the time of initial loss or be in at least HOT SHUTDOWN within the next 12 hours.

- c. With the above required circuit between the offsite transmission network and the onsite power distribution system inoperable and/or with the electrical feeds from both 2400-volt buses 1A and 1B to the associated essential switchgear buses inoperable, demonstrate the OPERABILITY of diesel generators 1A and 1B by performing Surveillance Requirement 4.8.1.1.2.a.4 within one hour and at least once per 8 hours thereafter, unless the diesel generators are already operating; restore the required circuit between the offsite transmission network and the onsite power distribution system and at least one electrical feed from either 2400-volt bus to the associated essential switchgear bus to OPERABLE status within 24 hours or be in at least HOT SHUTDOWN within the next 12 hours. With only one electrical feed from a 2400-volt bus restored, restore the electrical feeds from both 2400-volt buses to the associated essential switchgear buses to OPERABLE status within 72 hours from time of initial loss or be in at least HOT SHUTDOWN within the next 12 hours.

- d. With diesel generators 1A and 1B inoperable, demonstrate the OPERABILITY of the circuit between the offsite transmission network and the onsite power distribution system and the electrical feeds from 2400-volt buses 1A and 1B to the associated essential switchgear buses by performing Surveillance Requirement 4.8.1.1.1.a within one hour and at least once per 8 hours thereafter; restore at least one of the inoperable diesel generators to OPERABLE status within 2 hours or be in at least HOT SHUTDOWN within the next 12 hours. Restore both diesel generators to OPERABLE status within 72 hours from time of initial loss or be in at least HOT SHUTDOWN within the next 12 hours.

LACBWR

32h

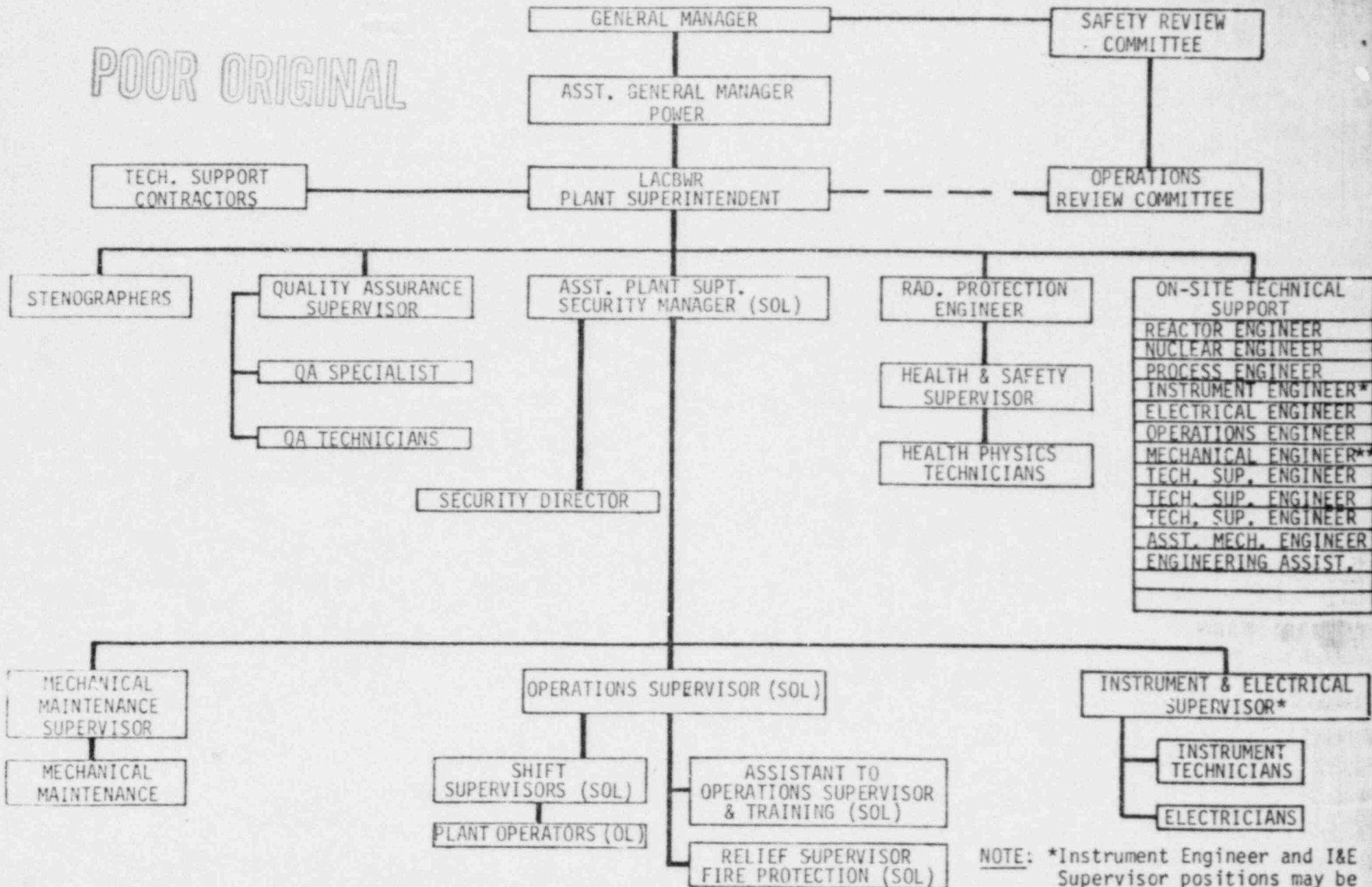
October 29, 1980

8012090

397

LACBWR

POOR ORIGINAL



6-3

DAIRYLAND POWER COOPERATIVE
LACBWR FACILITY ORGANIZATION

NOTE: *Instrument Engineer and I&E Supervisor positions may be held by same person.

**Responsible for Fire Protection Program

FIGURE 6.2.2-1

11/1/00