

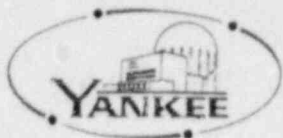
Regulatory

File No.

Telephone 617 366-9011

TWX

710-390-0739

**YANKEE ATOMIC ELECTRIC COMPANY**

20 Turnpike Road Westborough, Massachusetts 01581

September 14, 1973

United States Atomic Energy Commission  
Washington, D. C. 20545

Attention: Directorate of Licensing

Reference: License No. DPR-3 (Docket No. 50-29)

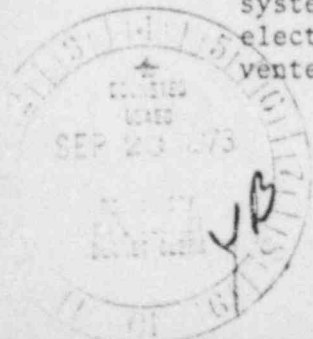
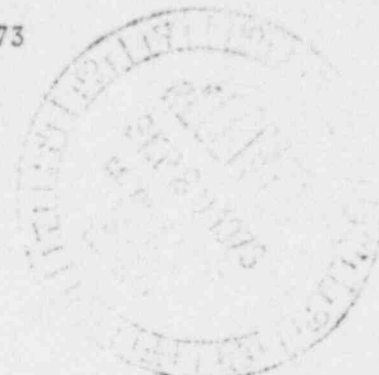
Dear Sir:

Pursuant to Section 50-59 of the Commission's regulations, Yankee Atomic Electric Company hereby requests to make the following change:

PROPOSED CHANGE: Reference is made to the description of the Emergency Core Cooling System in Yankee Atomic Electric Company Change number 97 and in particular to the description of the initiating circuitry in Attachment B of Supplement #3, Change #97. We propose the following: To provide vapor container overpressure signals to the WL relays in parallel with the existing main coolant pressure and pressurizer pressure signals in order to provide a diverse method of emergency core cooling system initiation.

REASON FOR CHANGE: This proposed change is the result of a study undertaken by Yankee Atomic Electric Company to determine an additional method of initiating the emergency core cooling system. The study was proposed in our letter dated March 30, 1972 and confirmed by your approval to Change #97, dated April 14, 1972.

DESCRIPTION OF CHANGE: Diverse initiation of the emergency core cooling system will be accomplished by providing vapor container overpressure signals to the WL relays in parallel with the existing main coolant and pressurizer pressure signals. Two pressure switches will be mounted in the primary auxiliary building. One switch, designated PS-238, will sense the vapor container pressure via the open bulb system and be electrically connected to trip WL 1-1. The other pressure switch, designated PS-239, will use the vapor container closed bulb system piping to sense vapor container over pressure and will be electrically connected to trip WL-1. The closed bulb system will be vented to the vapor container pressure. Use of the closed bulb system

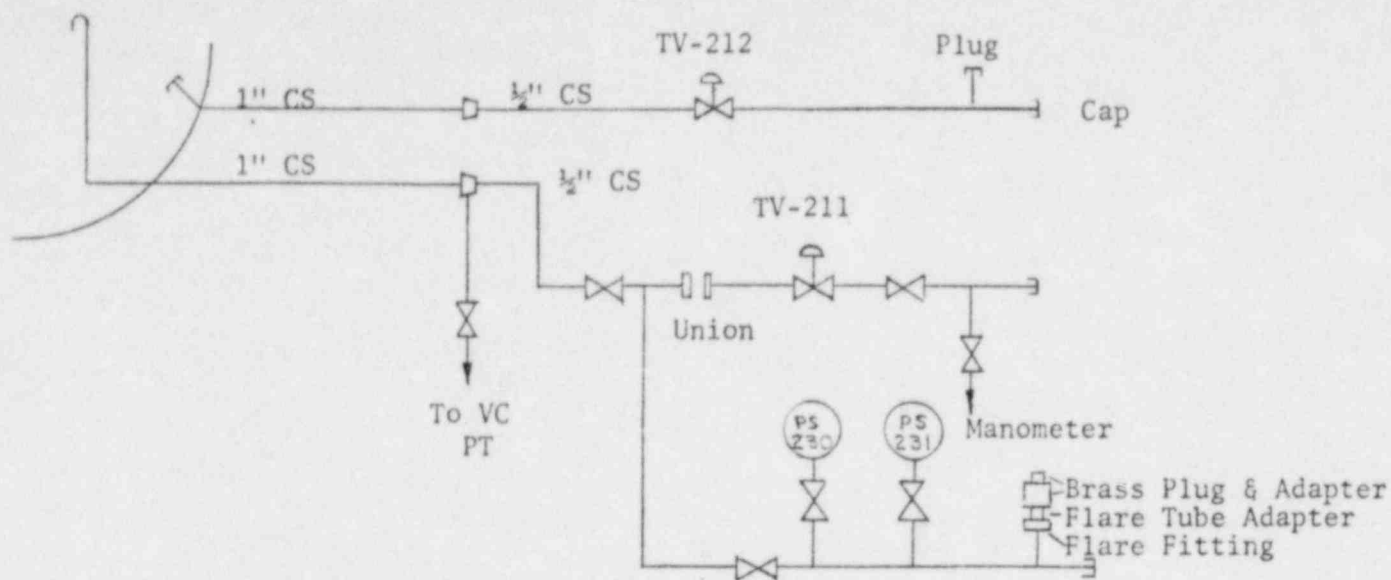


8011170 291

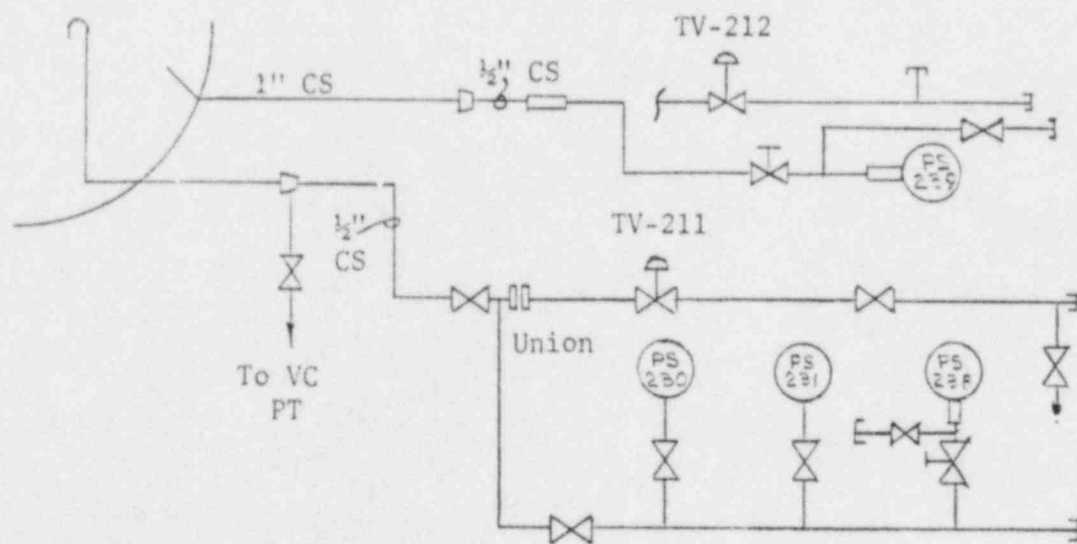
P

7063





Open & Closed Bulb Piping Before Change



Open & Closed Bulb Piping After Change

VC PRESSURE SWITCH (PS-239) WIRING DIAGRAM

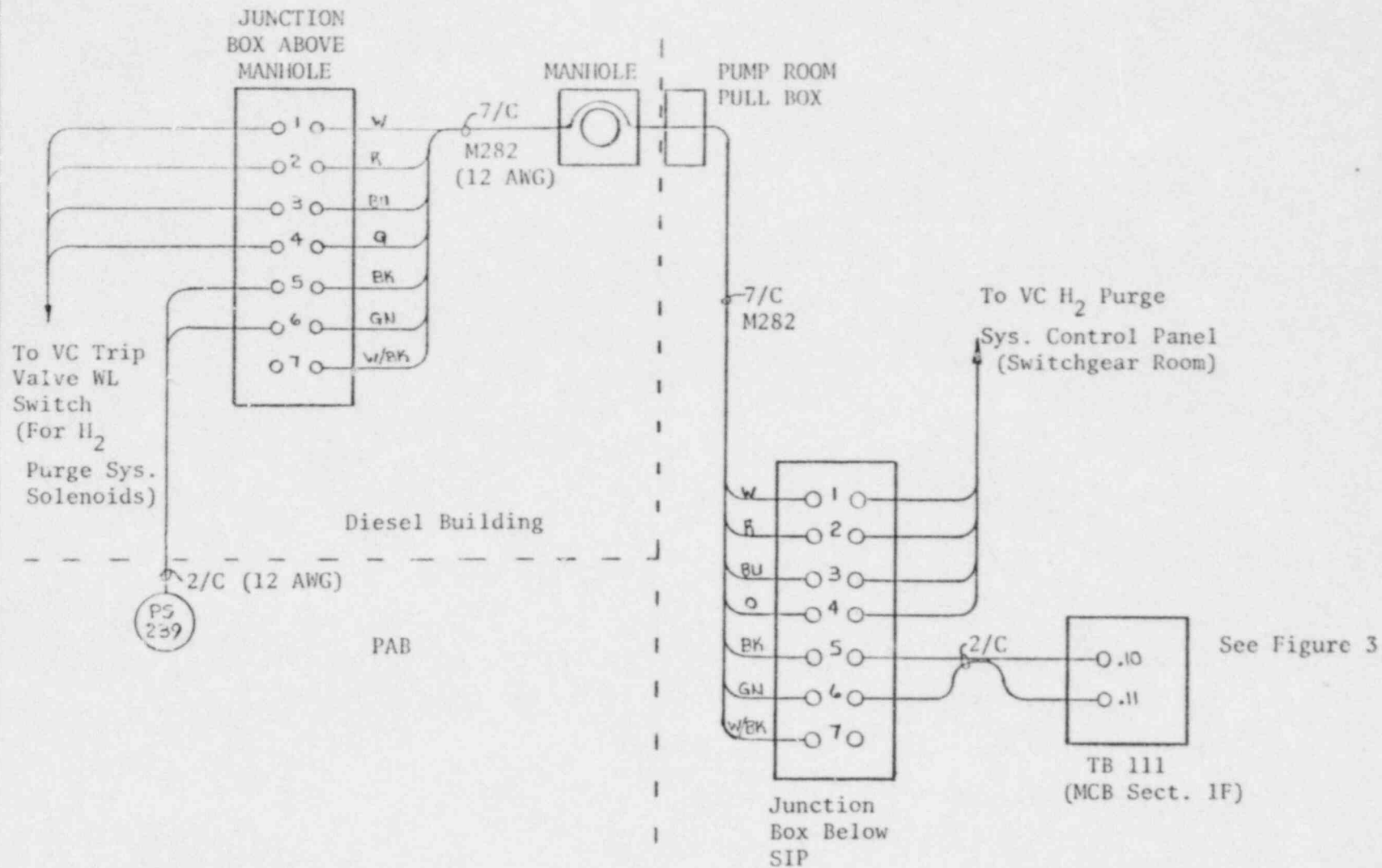
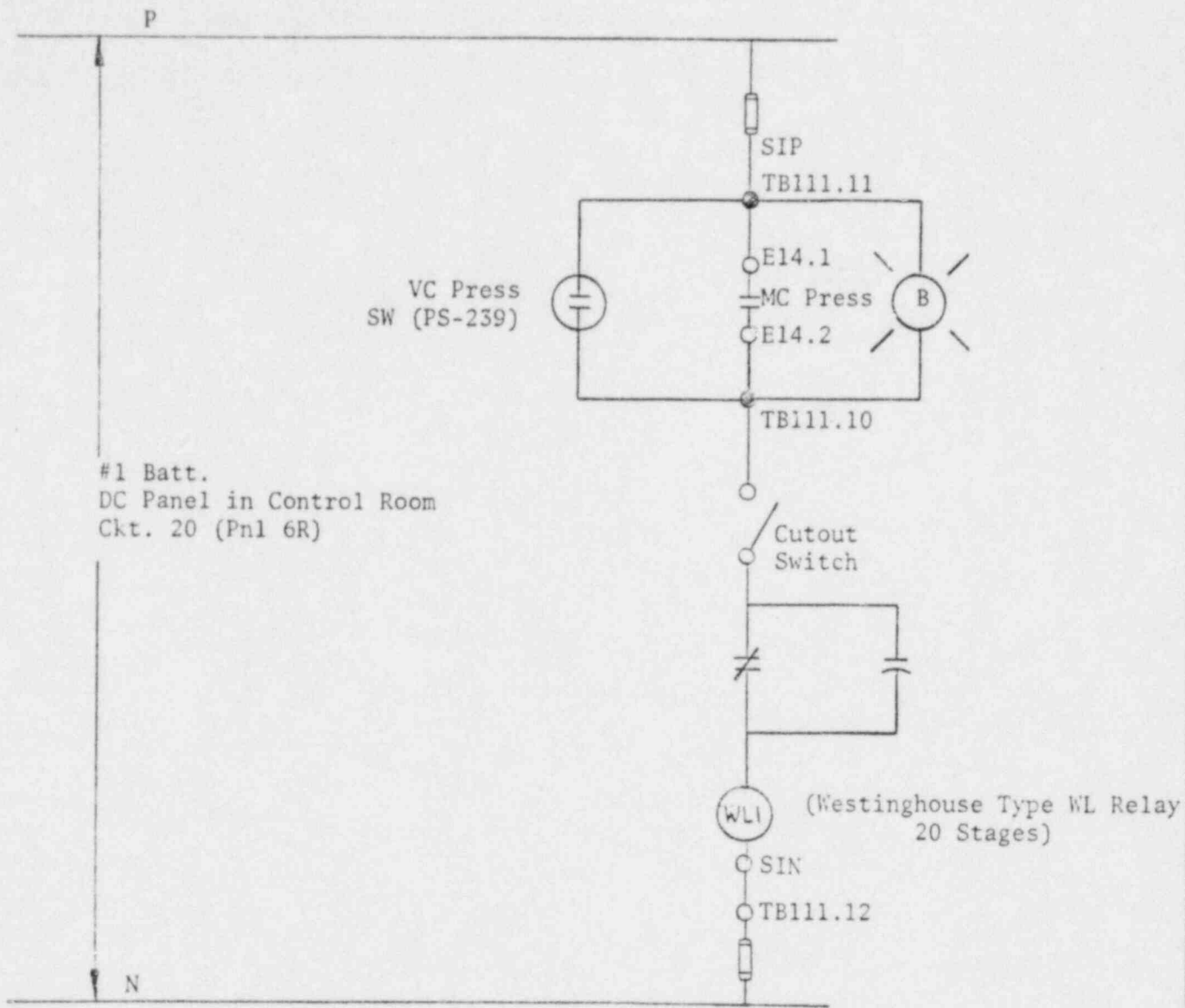
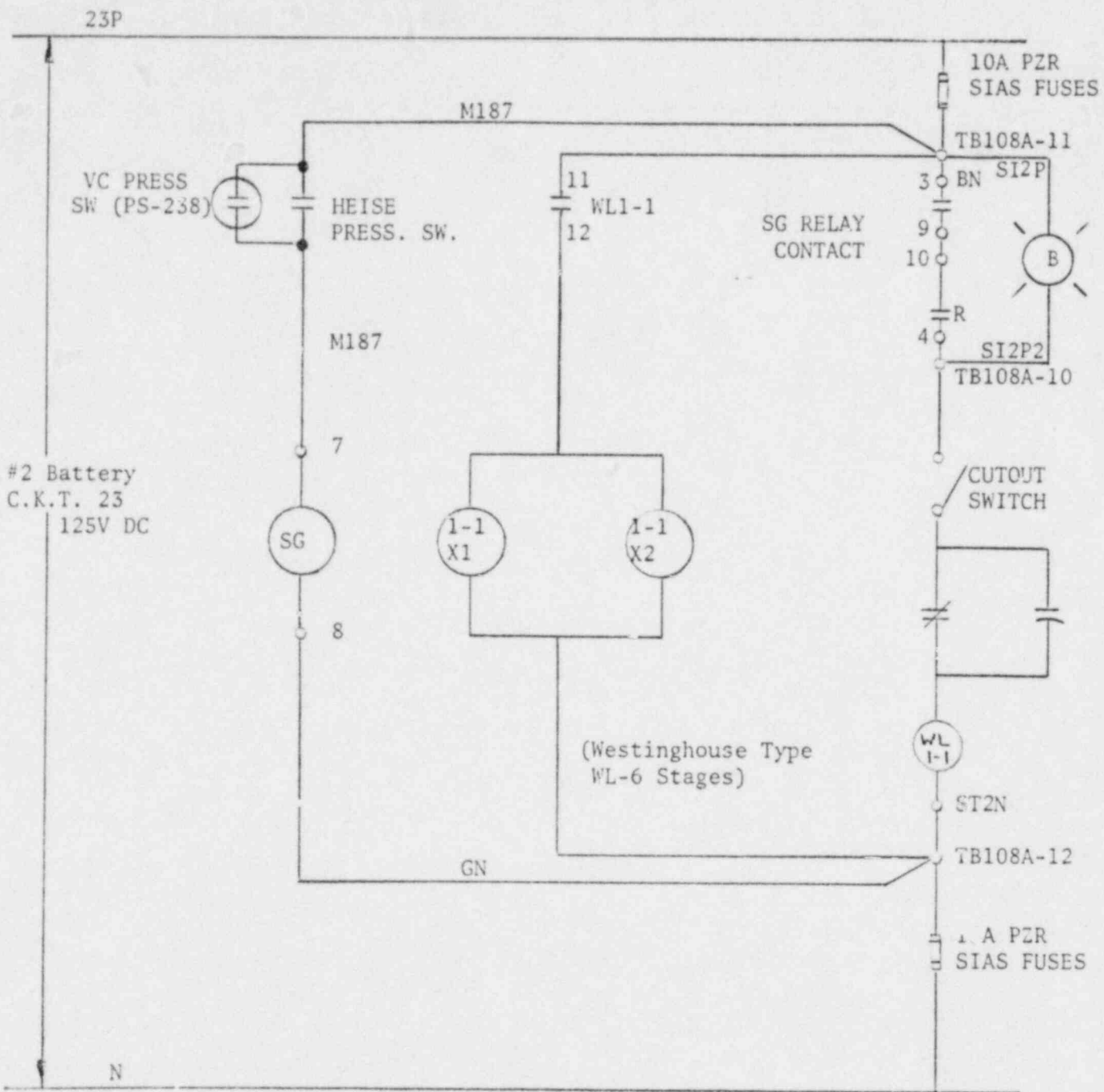


FIGURE 2



SAFETY INJECTION WL1 TRIP CIRCUIT

FIGURE 3



Notes:

1. SG Relay: Westinghouse Style 293B255A20  
125 V DC, Contact Ratings: Single 2.4A, 2 IN Series 20A.
2. Heise Pressure Switch: Barksdale Type B2T-M32SS  
Differential 15-34 PSI  
Range 0 to 3000 PSI