

U. S. NUCLEAR REGULATORY COMMISSION  
OFFICE OF INSPECTION AND ENFORCEMENT  
REGION IV

IE Inspection Report No. 50-458/80-14

Licensee: Gulf States Utilities Company (GSU)  
Post Office Box 2951  
Beaumont, Texas 77704

Facility: River Bend, Unit 1

Inspection at: River Bend Site, West Feliciana Parish, Louisiana  
GSU. Petroleum Building, Beaumont, Texas

Inspection Dates: December 15-17, 1980

Inspectors:

Lorenzo Wilborn  
Lorenzo Wilborn, Radiation Specialist

1/13/81  
Date

D. Blair Spitzberg  
D. Blair Spitzberg, Radiation Specialist

1/13/81  
Date

Approved by:

Glen D. Brown  
Glen D. Brown, Chief, Fuel Facility and  
Material Safety Branch

1/14/81  
Date

Inspection Summary

Inspection on December 15-17, 1980 (Report No. 50-458/80-14)

Areas Inspected: Routine, unannounced inspection of construction phase environmental protection programs, including organization and administration; audits; environmental monitoring; ecological studies; transmission line construction; and a tour of the site and surrounding area. The inspection involved twenty-four (24) inspector-hours by two NRC inspectors.

Results: In the areas inspected, two Severity Level V violations (Supplement II.E.) were disclosed (concrete spoil area selected such that wash water with a pH of approximately 12 was overflowing into West Creek - paragraph 7 and used petroleum products being transported by water to a drainage ditch - paragraph 7).

8108170242

DETAILS1. Persons ContactedGulf States Utilities Company (GSU)

- \*\*E. L. Draper, Vice President - Nuclear Technology
- J. E. Booker, Manager - Technical Programs
- \*\*W. J. Reed, Supervisor of Nuclear Licensing
- \*\*J. W. Cook, Lead Environmental Analyst
- \*M. H. Harrington, Site Environmental Analyst
- \*J. Wimberley, Superintendent of Construction
- \*T. Crouse, Director of Quality Assurance

Stone and Webster

- \*E. A. Sweeney, Superintendent of Engineering
- \*S. J. Hope, Site Environmental Protection Officer

Commonwealth Associates, Inc.

R. A. Wallace, Senior Construction Inspector

Other

- \*A. B. Beach, NRC - Resident Inspector

\*Present at site Exit Interview on December 16, 1980

\*\*Present at GSU Office Exit Interview on December 17, 1980

2. Licensee Action on Previous Inspection Findings

(Closed) Unresolved item (50-458/78-04/1). Assignment of responsibility for the Aquatic Ecological Monitoring Program and written procedures for implementation of the program. The inspectors noted that GSU had assigned the Lead Environmental Analyst, J. W. Cook, the responsibility for the Aquatic Ecological Monitoring Program by MEMO. The inspectors observed written procedures for implementation of the program. This item is considered closed.

(Open) Noncompliance (50-458/78-04/1). Failure to provide environmental assessment at Alligator Bayou. Action not completed on this item, GSU representative stated that the projected completion date is sometime in July 1981.

(Open) Unresolved item (50-458/78-06/1). Written instructions and procedures for implementation of transmission line work program with written assignments of responsibility. Due to recent turnover in personnel, action not completed on this item.

#### 4. Internal Audits and Site Inspection Program

The inspectors discussed the Audit Program with GSU and S&W representatives and was informed that there had been four audits per year until March 1980, (S&W Lead Environmental Engineer from the Cherry Hill Office accompanied by two assistants audited at six month intervals and GSU representatives audited at six month intervals with three months elapsed from the time of the S&W audits). Starting approximately September 1979, the Site Environmental Protection Officer inspected the environmental aspects of the site environmental control program as described in RBP-13-2 "Licensing Compliance" and the implementing instruction, CSI 1.3-10.76 "Environmental Monitoring Program," on a monthly basis wrote findings of inspections if any, maintained minutes of the Environmental Committee and inspected corrective action when warranted. GSU has designated a Site Environmental Analyst that will maintain a close working relationship with the S&W Site Environmental Protection Officer.

The inspectors reviewed the monthly meeting minutes of the Environmental Committee and noted that a few of the items identified in the inspections were not acted upon and closed out in a reasonable time frame. A GSU representative stated that in the future, a letter will be written by the GSU Superintendent of Construction specifying a timely deadline for corrective action. Site erosion appears to be a chronic problem which is discussed in paragraph 7. The inspectors had no further questions in this area at this time.

#### 5. Transmission Line Environmental Protection

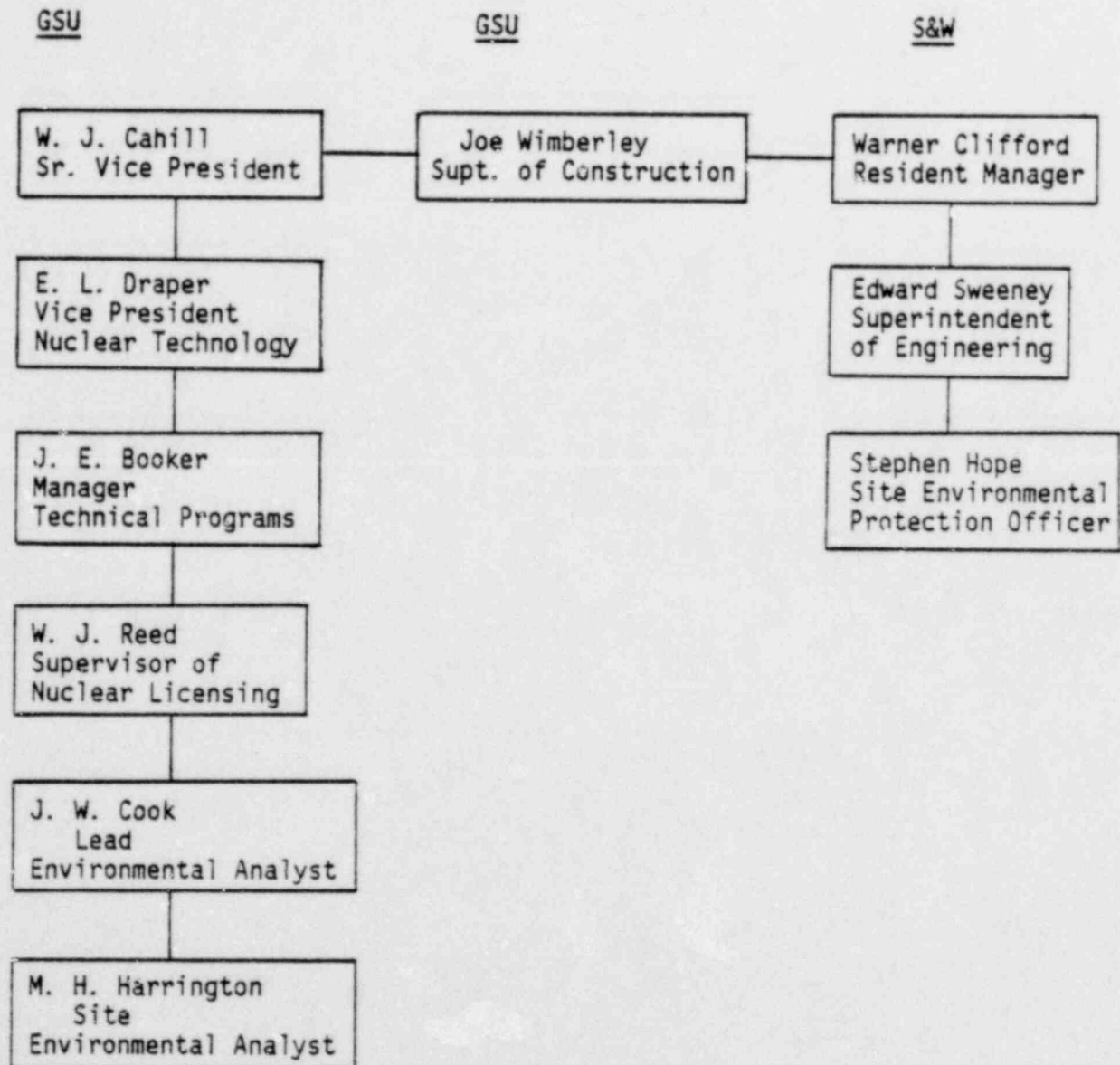
The inspectors reviewed with GSU representatives the status of transmission line work and concluded that no significant changes had occurred. A GSU representative stated that the responsibility for conducting transmission line work rested with the Senior Construction Inspector of Commonwealth Associates Inc. and meeting the environmental commitments related to this work rested with the GSU Site Environmental Analyst. Due to the recent turnover in personnel, written instruction and procedures had not been prepared implementing this program with written assignments of responsibility, therefore, this item would remain unresolved (50-458/78-06/1).

The inspectors inquired as to transmission line work effecting the Memorandum of Agreement which became final on August 11, 1980, and which reflects the NRC agreement with the Advisory Council on Historic Preservation and the Louisiana State Historic Preservation Officer regarding mitigation or avoidance of adverse effects of the proposed transmission line and expanded corridor through the Port Hudson National Historic Landmark, Louisiana, for River Bend Nuclear Station, Units 1 and 2. The Senior Construction Inspector stated that there had been no transmission line work near the Port Hudson National Historic Landmark

(Open) Unresolved item (50-458/78-06/2). Erosion at the spoils area, southeast of the reactor excavation site, and the cooling tower. Completion of erosion control program pending.

### 3. Organization and Administration

The inspectors reviewed the GSU and S&W organizations and assignments of environmental program responsibilities. The following indicates the present structure and assigned individuals as indicated by GSU and S&W representatives.





and that he will work closely with the Site Environmental Analyst to ensure that the stipulations in the agreement are carried out. He also stated that a professional archeologist from the Louisiana State University will be present to monitor all activities within the boundaries of the Landmark and the NRC will be notified of these activities by either informing the NRC Resident Inspector at River Bend or contact with the NRC Region IV Office. The inspectors had no further questions in this area at this time.

6. Ecological Studies

The applicant's commitments with respect to aquatic ecological studies at the site are described in Section 6 of the Environmental Report (ER). These studies are under the supervision of the Assistant Director, School of Forestry and Wildlife Management, Louisiana State University and the Leader, Louisiana Cooperative Fisheries Unit, Louisiana State University. The Initial Intensive Study had been completed, the Interim Study is almost complete and the Intensive Pre-Operational Study will be initiated approximately March 1, 1981. The inspectors concluded that the scope of work was consistent with ER commitments. The inspectors had no further questions in this area at this time.

7. Site Tour

The inspectors toured the site and surrounding area on December 15, 1980. The inspectors observed site erosion to be a chronic problem as noted from review of the monthly meeting minutes of the Environmental Committee. The inspectors stated that this erosion problem item would remain unresolved pending completion of the applicants erosion control program (50-458/78-06/2). The inspectors also observed satisfactory measures undertaken by the applicant to prevent loss of sediment and sand from the eroding areas mentioned above into draws and creeks draining the site.

The inspectors observed that wash water with a pH of approximately 12 was overflowing into West Creek from a spoil deposit area selected for National Mobile Concrete Corp. The inspectors stated that failure to prevent that overflowing constituted noncompliance with construction permit requirements.

The inspectors observed that used petroleum products had been spilled or had leaked from a container at the rear of the vehicle maintenance shop and were being transported to a drainage ditch. The inspectors stated that failure to take precautions to assure that those products will not be released to the environment constituted noncompliance with construction permit requirements.

The inspectors had no further questions in these areas at this time.

8. Unresolved Items

Unresolved items are matters which require additional information or action to determine if they are acceptable items, items of noncompliance or deviations. There were no new unresolved items disclosed during the inspection, however, three unresolved items from previous inspections remain incomplete.

9. Exit Interview

The inspectors met with S&W and GSU representatives denoted in paragraph 1, at the River Bend Site on December 16, 1980, and with GSU representatives denoted in paragraph 1, at the conclusion of the inspection, at the GSU Office in Beaumont, Texas, on December 17, 1980. The inspectors summarized the purpose and scope of the inspection and discussed the findings.