

NUREG-0485
Vol. 3, No. 3
February 1, 1981

SYSTEMATIC EVALUATION PROGRAM

STATUS SUMMARY REPORT

UNITED STATES NUCLEAR REGULATORY COMMISSION



W. T. Russell 2-13-81

William T. Russell, Chief
Systematic Evaluation Program Branch
Division of Licensing
Office of Nuclear Reactor Regulation

Dennis M. Crutchfield 2-13-81

Dennis M. Crutchfield, Chief
Operating Reactors Branch 5
Division of Licensing
Office of Nuclear Reactor Regulation

8103190737

TABLE OF CONTENTS

SECTION I

SEP TOPIC LIST	1-2 to 1-3
DESIGN BASIS EVENT GROUP DESCRIPTION	1-4
DEFINITIONS OF STATUS	1-5
SEP TOPIC SUMMARY STATUS REPORT	1-6
INTEGRATED ASSESSMENT SCHEDULE	1-7

SECTION II

BIG ROCK POINT	2-2 to 2-5
DRESDEN 1	2-6 to 2-9
DRESDEN 2	2-10 to 2-13
GINNA	2-14 to 2-17
HADDAM NECK	2-18 to 2-21
LACROSSE	2-22 to 2-25
MILLSTONE 1	2-26 to 2-29
OYSTER CREEK	2-30 to 2-33
PALISADES	2-34 to 2-37
SAN ONOFRE	2-38 to 2-41
YANKEE ROWE	2-42 to 2-45

SECTION I

SYSTEMATIC EVALUATION PROGRAM TOPIC LIST

TOPIC #	TITLE	TOPIC #	TITLE	TOPIC #	TITLE
II-1	A. Exclusion Area Authority and Control B. Population Distribution C. Potential Hazards or Changes in Potential Hazards Due to Transportation, Institutional, Industrial, and Military Facilities	III-4	A. Tornado Missiles B. Turbine Missiles C. Internally Generated Missiles	IV-2	Reactivity Control Systems Including Functional Design and Protection Against Single Failures
II-2	A. Severe Weather Phenomena B. Onsite Meteorological Measurements Program C. Atmospheric Transport and Diffusion Characteristics for Accident Analysis D. Availability of Meteorological Data in the Control Room	III-4		IV-3	BWR Jet Pumps Operating Indications
II-3	A. Hydrologic Description B. Flooding Potential and Protection Requirements 1. Capability of Operating Plant to Cope with Design Basis Flooding Conditions C. Safety-related Water Supply (Ultimate Heat Sink (UHS))	III-5	A. Effects of Pipe Break on Structures, Systems and Components Inside Containment B. Pipe Break Outside Containment	V-1	Compliance with Codes and Standards (10 CFR 50.55a)
II-4	Geology and Seismology A. Tectonic Province B. Proximity of Capable Tectonic Structures in Plant Vicinity C. Historical Seismicity within 200 Miles of Plant D. Stability of Slopes E. Dam Integrity F. Settlement of Foundations and Buried Equipment	III-6	Seismic Design Considerations	V-2	Applicable Code Cases
		III-7	A. Inservice Inspection, Including Prestressed Concrete Containments with Either Grouted or Ungouted Tendons B. Design Codes, Design Criteria, Load Combinations, and Reactor Cavity Design Criteria C. Delamination of Prestressed Concrete Containment Structures D. Containment Structural Integrity Tests	V-3	Overpressurization Protection
		III-8	A. Loose Parts Monitoring and Core Barrel Vibration Monitoring B. Control Rod Drive Mechanism Integrity C. Irradiation Damage, Use of Sensitized Stainless Steel and Fatigue Resistance D. Core Supports and Fuel Integrity	V-4	Piping and Safe End Integrity
		III-9	Support Integrity	V-5	Reactor Coolant Pressure Boundary (RCPB) Leakage, Detection
III-1	Classification of Structures, Components and Systems (Seismic and Quality)	III-10	A. Thermal-Overload Protection for Motors of Motor-operated Valves B. Pump Flywheel Integrity C. Surveillance Requirements on BWR Recirculation Pumps and Discharge Valves	V-6	Reactor Vessel Integrity
III-2	Wind and Tornado Loadings	III-11	Component Integrity	V-7	Reactor Coolant Pump Overspeed
III-3	A. Effects of High Water Level on Structures B. Structural and Other Consequences (e.g. Flooding of Safety-Related Equipment in Basements) of Failure of Underdrain Systems C. Inservice Inspection of Water Control Structures	III-12	Environmental Qualification of Safety Related Equipment	V-8	Steam Generator (SG) Integrity
		IV-1	A. Operation with Less Than All Loops In-Service	V-9	Reactor Core Isolation Cooling System (BWR)
				V-10	A. RHR Heat Exchanger Tube Failures B. RHR Reliability
				V-11	A. Requirements for Isolation of High and Low Pressure Systems B. RHR Interlock Requirements
				V-12	A. Water Purity of Boiling Water Reactor Primary Coolant Water Hammer
				VI-1	Organic Materials and Post Accident Chemistry
				VI-2	A. Pressure-Suppression Type BWR Containments B. Subcompartment Analysis C. Ice Condenser Containment D. Mass and Energy Release for Possible Pipe Break Inside Containment
				VI-3	Containment Pressure and Heat Removal Capability
				VI-4	Containment Isolation System
				VI-5	Combustible Gas Control
				VI-6	Containment Leak Testing

SYSTEMATIC EVALUATION PROGRAM TOPIC LIST

TOPIC #	TITLE	TOPIC #	TITLE	TOPIC #	TITLE
VI-7.A	1. ECCS Re-evaluation to Account for Increased Vessel Head Temperature	VII-5	Instruments for Monitoring Radiation and Process Variables During Accidents	XV-5	Loss of Normal Feedwater Flow
	2. Upper Plenum Injection	VII-6	Frequency Decay	XV-6	Feedwater System Pipe Breaks Inside and Outside Containment (PWR)
	3. ECCS Actuation System	VII-7	Acceptability of Swing Bus Design on BWR-4 Plants	XV-7	Reactor Coolant Pump Rotor Seizure and Reactor Coolant Pump Shaft Break
	4. Core Spray Nozzle Effectiveness	VIII-1	A. Potential Equipment Failures Associated with a Degraded Grid Voltage	XV-8	Control Rod Misoperation (System Malfunction or Operator Error)
VI-7.B	ESF Switchover from Injection to Recirculation Mode (Automatic ECCS Realignment)	VIII-2	Onsite Emergency Power Systems - Diesel Generator	XV-9	Startup or an Inactive Loop or Recirculation Loop at an Incorrect Temperature, and Flow Controller Malfunction Causing an Increase in BWR Core Flow Rate
VI-7.C	ECCS Single Failure Criterion and Requirements for Locking Out Power to Valves Including Independence of Interlocks on ECCS Valves	VIII-3	A. Station Battery Capacity Test Requirements	XV-10	Chemical and Volume Control System Malfunction that Results in a Decrease in the Boron Concentration in the Reactor Coolant (PWR)
	1. Appendix K - Electrical Instrumentation and Control (EIC) Re-reviews		B. DC Power System Bus Voltage Monitoring and Annunciation	XV-11	Inadvertent Loading and Operation of a Fuel Assembly in an Improper Position
	2. Failure Mode Analysis - ECCS	VIII-4	Electrical Penetrations of Reactor Containment	XV-12	Spectrum of Rod Ejection Accidents (PWR)
	3. The Effect of PWR Loop Isolation Valve Closure During a LOCA on ECCS Performance	IX-1	Fuel Storage		
VI-7.D	Long Term Cooling - Passive Failures (e.g., Flooding of Redundant Components)	IX-2	Overhead Handling Systems - Cranes	XV-13	Spectrum of Rod Drop Accidents (BWR)
VI-7.E	ECCS Sump Design and Test for Recirculation Mode Effectiveness	IX-3	Station Service and Cooling Water Systems	XV-14	Inadvertent Operation of ECCS and Chemical and Volume Control System Malfunction that Increases Reactor Coolant Inventory
VI-7.F	Accumulator Isolation Valves Power and Control System Design	IX-4	Boron Addition System	XV-15	Inadvertent Opening of a PWR Pressurizer Safety-Relief Valve or a BWR Safety/Relief Valve
VI-8	Control Room Habitability	IX-5	Ventilation Systems	XV-16	Radiological Consequences of Failure of Small Lines Carrying Primary Coolant Outside Containment
VI-9	Main Steam Line Isolation Seal System - BWR	IX-6	Fire Protection	XV-17	Steam Generator Tube Failure (PWR)
VI-10	A. Testing of Reactor Trip System and Engineered Safety Features Including Response Time Testing	X	Auxiliary Feedwater System	XV-18	Radiological Consequences of Main Steam Line Failure Outside Containment (BWR)
	B. Shared Engineered Safety Features, On-site Emergency Power, and Service Systems for Multiple Unit Facilities	XI-1	Appendix I	XV-19	Loss-of-Coolant Accidents Resulting from Spectrum of Postulated Piping Breaks Within the Reactor Coolant Pressure Boundary
VII-1	A. Isolation of Reactor Protection System from Non-Safety Systems, Including Qualifications of Isolation Devices	XI-2	Radiological (Effluent and Process) Monitoring Systems	XV-20	Radiological Consequences of Fuel Damaging Accidents (Inside and Outside Containment)
	B. Trip Uncertainty and Setpoint Analysis Review of Operating Data Base	XIII-1	Conduct of Operations	XV-21	Spent Fuel Cask Drop Accidents
VII-2	Engineered Safety Features (ESF) System Control Logic and Design	XIII-2	Safeguards/Industrial Security	XV-22	Anticipate Transients Without Scram
VII-3	Systems Required for Safe Shutdown	XV-1	Decrease in Feedwater Temperature, Increase in Feedwater Flow, Increase in Steam Flow and Inadvertent Opening of a Steam Generator Relief or Safety Valve	XV-23	Multiple Tube Failures in Steam Generators
VII-4	Effects of Failure in Non-Safety Related Systems on Selected Engineered Safety Features	XV-2	Spectrum of Steam System Piping Failures Inside and Outside of Containment (PWR)	XV-24	Loss of All A-C Power
		XV-3	Loss of External Load, Turbine Trip, Loss of Condenser Vacuum, Closure of Main Steam Isolation Valve (BWR), and Steam Pressure Regulator Failure (Closed)	XVI	Technical Specifications
		XV-4	Loss of Non-Emergency A-C Power to the Station Auxiliaries	XVII	Operational QA Program

DESIGN BASIS EVENT REVIEWS

THIS SECTION DEFINES DESIGN BASIS EVENT (DBE) REVIEWS FOR THE ELEVEN SEP FACILITIES

PWR DBE TOPIC LIST			BWR DBE TOPIC LIST			BWR & PWR DBE TOPIC LIST		
Accident and Transient Groups			Accident and Transient Groups					
DBE TOPIC	TITLE		DBE TOPIC	TITLE		DBE TOPIC	TITLE	
Group I (PWR)	XV-1 XV-1 XV-1 XV-1 XV-9 XV-10	Decrease in feedwater temperature Increase in feedwater flow Increase in steam flow Inadvertent opening of steam generator relief/safety valve Start-up of inactive loop System malfunction causing	Group I (BWR)	XV-1 XV-1 XV-9 XV-3	Decrease in feedwater temperature Increase in feedwater flow Increase in steam flow Start-up of inactive loop and flow controller malfunction Inadvertent closure of main steam isolation valve	FLOODS FLOODS	II-3.A II-3.B	Hydrologic description Flooding potential and protection requirements (capability of operating plant to cope with design basis flooding condition) Safety related water supply (ultimate heat sink)
Group II	XV-3 XV-3 XV-3 XV-3 XV-5 XV-6	Loss of external load Turbine trip Loss of condenser vacuum Steam pressure regulator failure Loss of feedwater flow Feedwater system pipe break	Group II	XV-3 XV-3 XV-3 XV-5	Loss of external load Turbine trip Loss of condenser vacuum Steam pressure regulator failure Loss of feedwater flow	SEISMIC	II-4.A II-4.B II-4.C II-4.D	Tectonic province Proximity of capable tectonic structures near plant Historical seismicity within 200 miles of plant Stability of slopes
Group III	XV-2 XV-2	Steam line break inside containment Steam line break outside containment	Group III	XV-18	Radiological Consequences of a Main Steam Line Failure Outside Containment	MISSILE GENERATION AND PROTECTION	III-4.A III-4.B III-4.C III-4.D	Tornado missiles Turbine missiles Internally generated missiles Site proximity missiles (including aircraft)
Group IV	XV-4 XV-24	Loss of AC power to station auxiliaries Loss of all AC power	Group IV	XV-4 XV-24	Loss of AC power to station auxiliaries Loss of all AC power	WINDS	III-2	Wind and tornado loading
Group V	XV-7 XV-7 XV-7	Loss of forced coolant flow Primary pump rotor seizure Primary pump shaft break	Group V	XV-7 XV-7 XV-7	Loss of forced coolant flow Primary pump rotor seizure Primary pump shaft break			
Group VI	XV-8 XV-8 XV-8 XV-12	Uncontrolled rod assembly withdrawal at power Uncontrolled rod assembly withdrawal low power start-up Control rod misoperation Spectrum of rod ejection accidents	Group VI	XV-8 XV-8 XV-8 XV-13	Uncontrolled rod assembly withdrawal at power Uncontrolled rod assembly withdrawal low power start-up Control rod misoperation Spectrum of rod drop accidents			
Group VII	XV-19	Spectrum of loss of coolant accidents	Group VII	XV-19	Spectrum of loss of coolant accidents			
Group VIII	XV-21 XV-20	Drop of cask or heavy equipment Radiological Consequences of Fuel Damaging Accidents (inside and outside containment)	Group VIII	XV-21 XV-20	Drop of cask or heavy equipment Radiological Consequences of Fuel Damaging Accidents (inside and outside containment)			
Group IX	XV-15	Inadvertent opening of PWR pressurizer relief valve	Group IX	XV-15	Inadvertent opening of BWR safety/relief valve			
Group X	XV-14	Inadvertent operation of ECCS or CVCS malfunction that causes an increase in coolant inventory	Group X	XV-14	Inadvertent operation of ECCS			
Group XI		Not applicable to PWRs	Group XI	XV-11	Inadvertent loading and operation of a fuel assembly in an improper position			
Group XII	XV-17	Steam Generator Tube Failure	Group XII		Not applicable to BWRs			

STATUS DEFINITIONS

G — Generic

These topics are being evaluated as part of ongoing NRC generic review effort. Some of the generic topics will be resolved and implemented independently of SEP activities, i.e., Unresolved Safety Issues (NUREG-0649), TMI Action Plan Issues (NUREG-0660). However, for the plants which are part of the SEP effort, the ongoing generic review and the SEP topic review will be closely integrated to improve the effectiveness and efficiency of these efforts and to minimize any impact on licensees. The status and conclusions of generic SEP topics will be incorporated in the final safety assessment for each plant.

X — Deleted

These topics have been verified as not applicable to the design of a specific plant.

0 — Topic Not Started

This status indicates that the review of the topic has not started.

1 — Questions Received From Review Branch

This status is used for internal NRC tracking of topic review progress. The status indicates that all information necessary to perform a topic evaluation is not available and that questions are being developed to be sent to the licensee.

2 — Questions Sent to Utility

The questions developed in the previous status have been formally transmitted to the licensee as a request for additional information.

3 — Question Response Received by NRC

The licensee has formally responded to the information request issued by NRC regarding the topic.

4 — Draft SE Received From Review Branch

This status is used for internal NRC tracking of topic review progress. The status indicates that a draft topic safety evaluation is under management review.

5 — Draft SE Sent to Utility

A draft topic safety evaluation has been formally transmitted to the licensee for their review and certification of the accuracy of the described facility. Licensees may comment upon NRC conclusions or propose alternatives to NRC positions.

6 — SE Response Received by NRC

The draft SE has been reviewed and licensee comments if any have been formally transmitted to the NRC.

7 — Topic Complete

The NRC topic evaluation has been completed and a final safety evaluation issued. A topic is completed in several ways: (1) The licensee has responded that the NRC draft safety evaluation (i.e. status 5) is correct, or (2) the licensee's comments on the NRC draft safety evaluation (i.e. status 6) have been reviewed and if appropriate incorporated into the final safety evaluation, or (3) the licensee has not responded in the time requested, thus concurring that the draft safety evaluation is correct.

SEP TOPIC STATUS SUMMARY REPORT

PLANT NAME	NUMBER OF TOPICS									
	GENERIC (G)	DELETED (X)	TOPIC NOT STARTED (0)	QUESTIONS RECEIVED FROM REVIEW BRANCH (1)	QUESTIONS SENT TO UTILITY (2)	QUESTION RESPONSE RECEIVED BY NRC (3)	DRAFT SE RECEIVED FROM REVIEW BRANCH (4)	DRAFT SE SENT TO UTILITY (5)	SE RESPONSE RECEIVED BY NRC (6)	TOPIC COMPLETE (7)
PALISADES	33	21	2	1	8	14	18	13	2	25
GINNA	33	20	27	2	1	14	2	12	12	14
DRESDEN 2	32	26	30	2	8	15	1	10	5	8
OYSTER CREEK	29	31	31	8	6	9	4	5	0	14
MILLSTONE 1	31	28	34	5	9	7	2	11	4	6
SAN ONOFRE	31	23	26	4	6	21	3	5	4	14
BIG ROCK POINT	30	30	30	2	7	15	2	5	6	10
HADDAM NECK	32	21	40	1	5	16	0	5	5	12
YANKEE ROWE	32	21	37	2	7	14	3	9	1	11
LACROSSE	27	32	40	1	9	8	2	12	1	5
DRESDEN 1	29	31	36	4	8	8	1	7	5	8
TOTALS This Month	339	284	333	32	74	141	38	94	45	127
TOTALS Last Month	340	285	341	26	94	160	56	48	36	121

INTEGRATED ASSESSMENT SCHEDULE

Topic Overall ^{3/} Completion Status As Of 01/01/81 %	Plant Name	60% Topic Completion	80% Topic Completion	Draft IA Internal Distribution ^{1/}	Draft SEP Issue	Remarks
73	PALISADES	3/31/81	6/30/81	8/31/81	10/31/81	This schedule reflects the schedule prior to the re-direction of the program which was provided in a letter dated January 14, 1981 from D. Eisenhower to all SEP licensees.
51	GINNA	6/30/81	7/31/81	9/30/81	11/30/81	
39	DRESDEN 2	6/30/81	8/31/81	10/31/81	12/31/82	
39	OYSTER CREEK	6/30/81	9/30/81	11/30/81	1/31/82	
36	MILLSTONE	6/30/81	10/31/81	12/31/81	2/28/82	
43	SAN ONOFRE	6/30/81	12/31/81	2/28/82	4/30/82	
39	BIG ROCK POINT	6/30/81	1/31/82	3/31/82	5/31/82	
34	HADDAM NECK	6/30/81	2/28/82	4/30/82	6/30/82	
36	YANKEE ROWE	6/30/81	4/30/82	6/30/82	8/31/82	
32	LACROSSE	6/30/81	5/31/82	7/31/82	9/30/82	
35	DRESDEN 1 ^{2/}	Deferred	Deferred	Deferred	Deferred	

^{1/} Includes completion of all topics and the draft integrated assessment.

^{2/} The licensee has proposed deferring SEP review of Dresden 1. The facility is currently shutdown and will not restart until 1986.

^{3/} The plant topic overall completion status (percent complete) is calculated based upon the number of topic reviews to be performed (not including generic or deleted topics) and a weighted average of current topic review status. The calculation is performed using the following formula:

$$(\text{Percent Complete}) = \frac{\text{Sum of Topics in Status} \times \text{Weighting Factor of Status}}{\text{Sum of Topics}}$$

Status	Weighting Factor
G, X	Not Included
0	0%
1, 2, 3	35%
4	80%
5, 6	90%
7	100%

SECTION II

BIG ROCK POINT

FACILITY INFORMATION

FACILITY: BIG ROCK POINT 1

LICENSEE: CONSUMERS POWER

REGION/LOCATION: 4 MILES NORTH EAST OF CHARLEVOIS, MICH.

DOCKET NO.: 05000155

POWER CAPACITY: 0240(THERMAL) 067(ELECTRICAL)

OL NUMBER: DPR-6

N.S.S.S.: GE.

A/E FIRM: BECH.

KEY PERSONNEL

SYSTEMATIC EVALUATION PROGRAM BRANCH CHIEF: W. RUSSELL

OPERATING REACTORS BRANCH CHIEF: D. CRUTCHFIELD

OPERATING REACTORS PROJECT MANAGER: W. PAULSON

KEY FOR STATUS CODES

G - GENERIC

X - DELETED

0 - TOPIC NOT
STARTED

1 - QUESTIONS RECEIVED
FROM REVIEW BRANCH

2 - QUESTIONS SENT TO
UTILITY

3 - QUESTION RESPONSE
RECEIVED BY NRC

4 - DRAFT SE RECEIVED
FROM REVIEW BRANCH

5 - DRAFT SE SENT TO
UTILITY

6 - SE RESPONSE RECEIVED
BY NRC

7 - TOPIC COMPLETE

TOPIC NO. STATUS REMARKS

II-1 A.	7	CPCo to NRC	09/02/80
II-1 B.	7	CPCo to NRC	09/02/80
II-1 C.	7	CPCo to NRC	09/02/80
II-2 A.	6	CPCo to NRC	01/23/81
II-2 B.	G	NRC to CPCo	09/26/80
II-2 C.	0		
II-2 D.	G	NRC to CPCo	09/26/80
II-3 A.	2	Site Visit	07/16/79
II-3 B.	3	Site Visit	07/16/79
II-3 B. 1.	3	Site Visit	07/16/79
II-3 C.	3	NRC to CPCo	08/04/80
II-4	5	NUREG/CR-1582	08/80
II-4 A.	5	NUREG/CR-1582	08/80
II-4 B.	5	NUREG/CR-1582	08/80
II-4 C.	5	NUREG/CR-1582	08/80
II-4 D.	2	NRC to CPCo	11/16/79
II-4 E.	X	Site Visit	07/19/79
II-4 F.	2		
III-1	1(Mech) 5(Elec)	NRC to CPCo	10/29/80
II-2	3	CPCo to NRC	08/08/80

BIG ROCK POINT

TOPIC NO.	STATUS	REMARKS	TOPIC NO.	STATUS	REMARKS
III-3 A.	3	CPCo to NRC 08/08/80	III-10 B.	X	NRC to CPCo 11/16/79
III-3 B.	X	NRC to CPCo 12/26/80	III-10 C.	X	NRC to CPCo 11/16/79
III-3 C.	0		III-11	3	
III-4 A.	0		III-12	3	CPCo to NRC 10/31/80
III-4 B.	0		IV-1 A.	7	NRC to CPCo 10/09/79
III-4 C.	0		IV-2	2	NRC to CPCo 12/15/80
III-4 D.	0		IV-3	X	NRC to CPCo 11/16/79
III-5 A.	3		V-1	G	NRC to CPCo 11/16/79
III-5 B.	2	NRC to CPCo 01/04/80	V-2	X	NRC to CPCo 11/16/79
III-6	2	NRC to CPCo 08/04/80	V-3	G	NRC to CPCo 11/16/79
III-7 A.	X	NRC to CPCo 11/16/79	V-4	G	NRC to CPCo 11/16/79
III-7 B.	3	CPCo to NRC 08/08/80	V-5	4	
III-7 C.	X	NRC to CPCo 11/16/79	V-6	7	NRC to CPCo 03/05/80
III-7 D.	3	NRC to CPCo 08/09/79	V-7	X	NRC to CPCo 11/16/79
III-8 A.	G	NRC to CPCo 11/16/79	V-8	X	NRC to CPCo 11/16/79
III-8 B.	X	NRC to CPCo 09/26/80	V-9	X	NRC to CPCo 11/16/79
III-8 C.	7	NRC to CPCo 02/05/80	V-10 A.	7	NRC to CPCo 10/09/79
III-8 D.	G	NRC to CPCo 11/16/79	V-10 B.	4(Sys)	
III-9	G	NRC to CPCo 11/16/79	V-11 A.	7(Elec) 0(Sys)	NRC to CPCo 07/03/80
III-10 A.	6	CPCo to NRC 09/24/80	V-11 B.	4(Sys) 6(Elec)	CPCo to NRC 09/24/80

BIG ROCK POINT

TOPIC NO.	STATUS	REMARKS		TOPIC NO.	STATUS	REMARKS	
V-12 A.	7	NRC to CPCo	10/09/79	VI-7 D.	G	NRC to CPCo	11/16/79
V-13	G	NRC to CPCo	11/16/79	VI-7 E.	G	NRC to CPCo	11/16/79
VI-1	3	CPCo to NRC	07/12/79	VI-7 F.	X	NRC to CPCo	11/16/79
VI-2 A.	X	NRC to CPCo	11/16/79	VI-8	G	NRC to CPCo	09/26/80
VI-2 B.	G	NRC to CPCo	11/16/79	VI-9	X	NRC to CPCo	11/16/79
VI-2 C.	X	NRC to CPCo	11/16/79	VI-10 A.	0		
VI-2 D.	3	CPCo to NRC	04/02/80	VI-10 B.	X	NRC to CPCo	11/16/79
VI-3	3	CPCo to NRC	04/02/80	VII-1 A.	0		
VI-4	0(Sys) 2(Elec)	NRC to CPCo	12/02/80	VII-1 B.	G	NRC to CPCo	11/16/79
VI-5	0(Sys) 0(Elec)			VII-2	0		
VI-6	G	NRC to CPCo	11/16/79	VII-3	4(Sys) 5(Elec)	NRC to CPCo	10/29/80
VI-7 A. 1.	X	NRC to CPCo	11/16/79	VII-4	G	NRC to CPCo	11/16/79
VI-7 A. 2.	X	NRC to CPCo	11/16/79	VII-5	G	NRC to CPCo	11/16/79
VI-7 A. 3.	0			VII-6	G	NRC to CPCo	11/16/79
VI-7 A. 4.	G	NRC to CPCo	11/16/79	VII-7	X	NRC to CPCo	11/16/79
VI-7 B.	0			VIII-1 A.	G	NRC to CPCo	11/16/79
VI-7 C.	0			VIII-2	6	CPCo to NRC	09/24/80
VI-7 C. 1.	6	CPCo to NRC	09/24/80	VIII-3 A.	7		
VI-7 C. 2.	0			VIII-3 B.	6	CPCo to NRC	09/24/80
VI-7 C. 3.	X	NRC to CPCo	11/16/79	VIII-4	6	CPCo to NRC	09/24/80

BIG ROCK POINT

TOPIC NO.	STATUS	REMARKS	TOPIC NO.	STATUS	REMARKS
IX-1	2	NRC to CPCo 11/27/79	XV-10	X	NRC to CPCo 11/16/79
IX-2	G	NRC to CPCo 11/16/79	XV-11	0	
IX-3	2		XV-12	X	NRC to CPCo 11/16/79
IX-4	X	NRC to CPCo 11/16/79	XV-13	0(Sys) 0(Doses)	
IX-5	0		XV-14	0	
IX-6	G	NRC to CPCo 11/16/79	XV-15	0	
X	X	NRC to CPCo 11/16/79	XV-16	0	
XI-1	G	NRC to CPCo 11/16/79	XV-17	X	NRC to CPCo 11/16/79
XI-2	G	NRC to CPCo 11/16/79	XV-18	0(Sys) 0(Doses)	
XIII-1	G	NRC to CPCo 11/16/79	XV-19	0(Sys) 0(Doses)	
XIII-2	G	NRC to CPCo 11/16/79	XV-20	0	
XV-1	0		XV-21	G	NRC to CPCo 11/16/79
XV-2	X	NRC to CPCo 11/16/79	XV-22	G	NRC to CPCo 11/16/79
XV-3	0		XV-23	X	NRC to CPCo 11/16/79
XV-4	0		XV-24	G	NRC to CPCo 11/16/79
XV-5	0		XVI	X	NRC to CPCo 11/05/80
XV-6	X	NRC to CPCo 11/16/79	XVII	G	NRC to CPCo 11/16/79
XV-7	0				
XV-8	0				
XV-9	0				

DRESDEN 1

FACILITY INFORMATION

FACILITY: DRESDEN 1

LICENSEE: COMMONWEALTH EDISON

REGION/LOCATION: 9 MILES EAST OF MORRIS, ILL.

DOCKET NO.: 05000010

POWER CAPACITY: 700(THERMAL) 200(ELECTRICAL)

OL NUMBER: DPR-2

N.S.S.S.: GE.

A/E FIRM: BECH.

KEY PERSONNEL

SYSTEMATIC EVALUATION PROGRAM BRANCH CHIEF: W. RUSSELL

OPERATING REACTORS BRANCH CHIEF: D. CRUTCHFIELD

OPERATING REACTORS PROJECT MANAGER: P. O'CONNOR

KEY FOR STATUS CODES

G - GENERIC

X - DELETED

0 - TOPIC NOT
STARTED

1 - QUESTIONS RECEIVED
FROM REVIEW BRANCH

2 - QUESTIONS SENT TO
UTILITY

3 - QUESTION RESPONSE
RECEIVED BY NRC

4 - DRAFT SE RECEIVED
FROM REVIEW BRANCH

5 - DRAFT SE SENT TO
UTILITY

6 - SE RESPONSE RECEIVED
BY NRC

7 - TOPIC COMPLETE

TOPIC NO. STATUS REMARKS

II-1 A.	0		
II-1 B.	0		
II-1 C.	0		
II-2 A.	5	NRC to CEC	12/15/80
II-2 B.	G	NRC to CEC	09/11/80
II-2 C.	0		
II-2 D.	G	NRC to CEC	09/11/80
II-3 A.	3	Site Visit	11/09/79
II-3 B.	3	Site Visit	11/09/79
II-3 B. 1.	3	Site Visit	11/09/79
II-3 C.	3	Site Visit	11/09/79
II-4	5	NUREG/CR-1582	08/80
II-4 A.	5	NUREG/CR-1582	08/80
II-4 B.	5	NUREG/CR-1582	08/80
II-4 C.	5	NUREG/CR-1582	08/80
II-4 D.	0		
II-4 E.	0		
II-4 F.	0		
III-1	1(Sys) 0(Elec)		
III-2	1		

DRESDEN 1

TOPIC NO.	STATUS	REMARKS		TOPIC NO.	STATUS	REMARKS	
III-3 A.	1			III-10 B.	X	NRC to CEC Co	11/16/79
III-3 B.	X	NRC to CEC Co	11/16/79	III-10 C.	X	NRC to CEC Co	11/16/79
III-3 C.	0			III-11	0		
III-4 A.	0(AEB) 0(SEB)			III-12	0		
III-4 B.	0(MTEB) 0(SEB)			IV-1 A.	7	NRC to CEC Co	11/05/79
III-4 C.	0(AEB) 0(RSB)			IV-2	2	NRC to CEC Co	12/15/80
III-4 D.	0			IV-3	X	NRC to CEC Co	11/16/79
III-5 A.	2	NRC to CEC Co	01/04/80	V-1	G	NRC to CEC Co	11/16/79
III-5 B.	2	NRC to CEC Co	01/04/80	V-2	X	NRC to CEC Co	11/16/79
III-6	2	NRC to CEC Co	08/04/80	V-3	X	NRC to CEC Co	11/16/79
III-7 A.	X	NRC to CEC Co	11/16/79	V-4	G	NRC to CEC Co	11/16/79
III-7 B.	1			V-5	6	CECo to NRC	09/02/80
III-7 C.	X	NRC to CEC Co	11/16/79	V-6	7	NRC to CEC Co	03/05/80
III-7 D.	3	CECo to NRC	08/05/80	V-7	X	NRC to CEC Co	11/16/79
III-8 A.	G	NRC to CEC Co	11/16/79	V-8	X	NRC to CEC Co	11/16/79
III-8 B.	X	NRC to CEC Co	09/11/80	V-9	X	NRC to CEC Co	11/16/79
III-8 C.	6	CECo to NRC	03/10/80	V-10 A.	7	NRC to CEC Co	11/03/79
III-8 D.	G	NRC to CEC Co	11/16/79	V-10 B.	4(Sys)		
III-9	G	NRC to CEC Co	11/16/79	V-11 A.	6	CECo to NRC	09/26/80
III-10 A.	7	CECo to NRC	10/06/80	V-11 B.	X	NRC to CEC Co	09/11/80

DRESDEN 1

TOPIC NO.	STATUS	REMARKS	TOPIC NO.	STATUS	REMARKS
V-12 A.	6	CECo to NRC 08/12/80	VI-7 D.	G	NRC to CEC Co 11/16/79
V-13	G	NRC to CEC Co 11/16/79	VI-7 E.	G	NRC to CEC Co 11/16/79
VI-1	3	CECo to NRC 07/27/79	VI-7 F.	X	NRC to CEC Co 11/16/79
VI-2 A.	X	NRC to CEC Co 11/16/79	VI-8	G	NRC to CEC Co 09/11/80
VI-2 B.	G	NRC to CEC Co 11/16/79	VI-9	X	NRC to CEC Co 09/11/80
VI-2 C.	X	NRC to CEC Co 11/16/79	VI-10 A.	0	
VI-2 D.	2		VI-10 B.	6(Sys) 7(Elec)	CECo to NRC 05/02/79
VI-3	2		VII-1 A.	0	
VI-4	0(Sys) 1(Elec)		VII-1 B.	G	NRC to CEC Co 11/16/79
VI-5	1		VII-2	0	
VI-6	G	NRC to CEC Co 11/16/79	VII-3	4(Sys) 0(Elec)	
VI-7 A. 1.	X	NRC to CEC Co 11/16/79	VII-4	G	NRC to CEC Co 11/16/79
VI-7 A. 2.	X	NRC to CEC Co 11/16/79	VII-5	G	NRC to CEC Co 11/16/79
VI-7 A. 3.	0		VII-6	G	NRC to CEC Co 11/16/79
VI-7 A. 4.	G	NRC to CEC Co 11/16/79	VII-7	X	NRC to CEC Co 11/16/79
VI-7 B.	X	NRC to CEC Co 11/16/79	VIII-1 A.	G	NRC to CEC Co 11/16/79
VI-7 C.	0		VIII-2	7	
VI-7 C. 1.	7		VIII-3 A.	2	NRC to CEC Co 10/10/80
VI-7 C. 2.	7		VIII-3 B.	5	NRC to CEC Co 07/01/80
VI-7 C. 3.	X	NRC to CEC Co 11/16/79	VIII-4	5	NRC to CEC Co 06/12/80

DRESDEN 1

TOPIC NO.	STATUS	REMARKS		TOPIC NO.	STATUS	REMARKS	
IX-1	3	CECo to NRC	06/02/80	XV-10	X	NRC to CEC Co	11/16/79
IX-2	G	NRC to CEC Co	11/16/79	XV-11	0		
IX-3	3	CECo to NRC	11/29/79	XV-12	X	NRC to CEC Co	11/16/79
IX-4	X	NRC to CEC Co	11/16/79	XV-13	0(Sys) 0(Doses)		
IX-5	0			XV-14	0		
IX-6	G	NRC to CEC Co	11/16/79	XV-15	0		
X	X	NRC to CEC Co	11/16/79	XV-16	0		
XI-1	G	NRC to CEC Co	11/16/79	XV-17	X	NRC to CEC Co	11/16/79
XI-2	G	NRC to CEC Co	11/16/79	XV-18	0(Sys) 0(Doses)		
XIII-1	G	NRC to CEC Co	11/16/79	XV-19	0(Sys) 0(Doses)		
XIII-2	G	NRC to CEC Co	11/16/79	XV-20	7	NRC to CEC Co	08/12/80
XV-1	0			XV-21	G	NRC to CEC Co	11/16/79
XV-2	X	NRC to CEC Co	11/16/79	XV-22	G	NRC to CEC Co	11/16/79
XV-3	0			XV-23	X	NRC to CEC Co	11/16/79
XV-4	0			XV-24	G	NRC to CEC Co	11/16/79
XV-5	0			XVI	X	NRC to CEC Co	11/05/80
XV-6	X	NRC to CEC Co	11/16/79	XVII	G	NRC to CEC Co	11/16/79
XV-7	0						
XV-8	0						
XV-9	0						

DRESDEN 2

FACILITY INFORMATION

FACILITY: DRESDEN 2

LICENSEE: COMMONWEALTH EDISON

REGION/LOCATION: 9 MILES EAST OF MORRIS, ILL.

DOCKET NO.: 05000237

POWER CAPACITY: 2527(THERMAL) 0794(ELECTRICAL)

OL NUMBER: DPR-19

N.S.S.S.: GE.

A/E FIRM: S&L

KEY PERSONNEL

SYSTEMATIC EVALUATION PROGRAM BRANCH CHIEF: W. RUSSELL

OPERATING REACTORS BRANCH CHIEF: D. CRUTCHFIELD

OPERATING REACTORS PROJECT MANAGER: P. O'CONNOR

KEY FOR STATUS CODES

G - GENERIC

X - DELETED

0 - TOPIC NOT
STARTED

1 - QUESTIONS RECEIVED
FROM REVIEW BRANCH

2 - QUESTIONS SENT TO
UTILITY

3 - QUESTION RESPONSE
RECEIVED BY NRC

4 - DRAFT SE RECEIVED
FROM REVIEW BRANCH

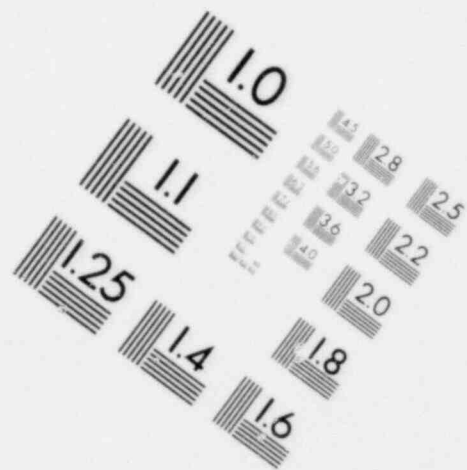
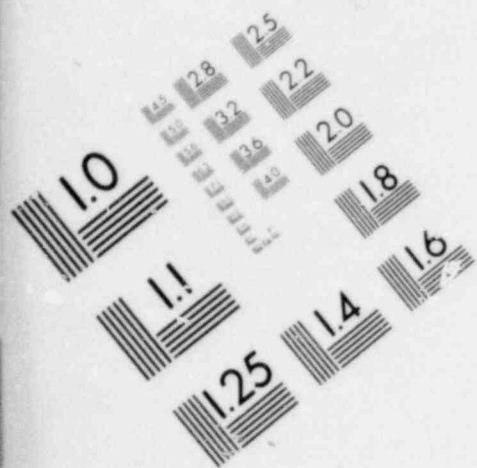
5 - DRAFT SE SENT TO
UTILITY

6 - SE RESPONSE RECEIVED
BY NRC

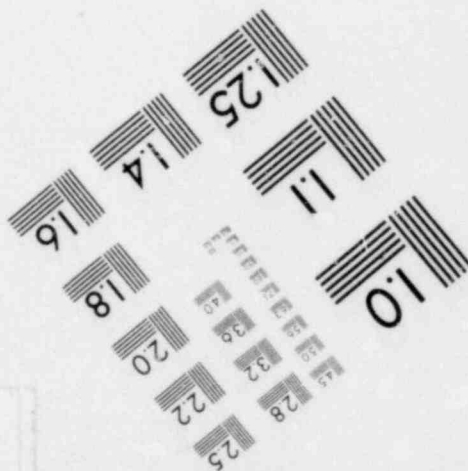
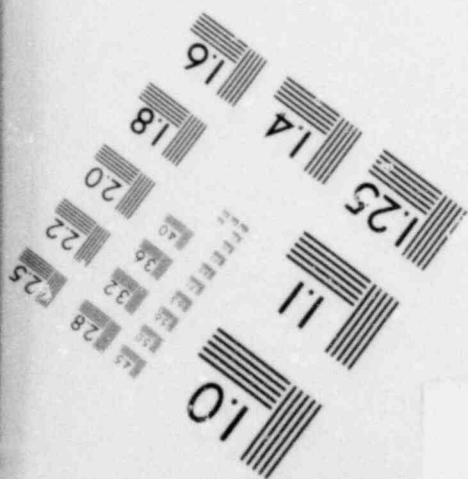
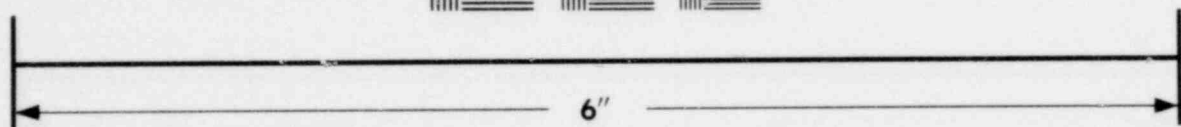
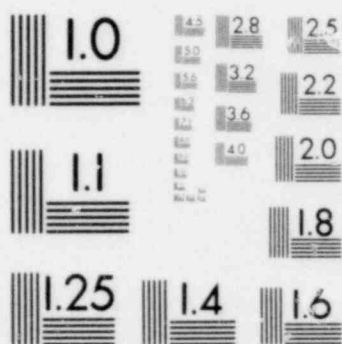
7 - TOPIC COMPLETE

TOPIC NO. STATUS REMARKS

II-1 A.	0		
II-1 B.	0		
II-1 C.	0		
II-2 A.	5	NRC to CEC	12/15/80
II-2 B.	G	NRC to CEC	09/11/80
II-2 C.	0		
II-2 D.	G	NRC to CEC	09/11/80
II-3 A.	3	CEC to NRC Site Visit	01/09/79
II-3 B.	3	CEC to NRC Site Visit	01/09/79
II-3 B. 1.	3	CEC to NRC Site Visit	01/09/79
II-3 C.	3	CEC to NRC Site Visit	01/09/79
II-4	5	NUREG/CR-1582	08/80
II-4 A.	5	NUREG/CR-1582	08/80
II-4 B.	5	NUREG/CR-1582	08/80
II-4 C.	5	NUREG/CR-1582	08/80
II-4 D.	0		
II-4 E.	0		
II-4 F.	0		
III-1	1(Sys) 3(Elec)	Part of VII-3	
III-2	3		



**IMAGE EVALUATION
TEST TARGET (MT-3)**



DRESDEN 2

TOPIC NO.	STATUS	REMARKS		TOPIC NO.	STATUS	REMARKS	
III-3 A.	3	CECo to NRC	09/28/79	III-10 B.	X	NRC to CEC Co	11/16/79
III-3 B.	X	NRC to CEC Co	11/16/79	III-10 C.	7	NRC to CEC Co	05/22/79
III-3 C.	0			III-11	3		
III-4 A.	0(AEB) 0(SEB)			III-12	3	CECo to NRC	10/30/80
III-4 B.	0(MTEB) 0(SEB)			IV-1 A.	7	NRC to CEC Co	11/13/79
III-4 C.	0(RSB) 0(SEB)			IV-2	2	NRC to CEC Co	12/15/80
III-4 D.	0			IV-3	G	NRC to CEC Co	11/16/79
III-5 A.	2	NRC to CEC Co	01/04/80	V-1	G	NRC to CEC Co	11/16/79
III-5 B.	6	CECo to NRC	03/21/80	V-2	X	NRC to CEC Co	11/16/79
III-6	5	NRC to CEC Co	05/20/80	V-3	G	NRC to CEC Co	11/16/79
III-7 A.	X	NRC to CEC Co	11/16/79	V-4	G	NRC to CEC Co	11/16/79
III-7 B.	3	CECo to NRC	09/28/79	V-5	6	CECo to NRC	09/02/80
III-7 C.	X	NRC to CEC Co	11/16/79	V-6	7	NRC to CEC Co	03/05/80
III-7 D.	3	CECo to NRC	08/05/80	V-7	X	NRC to CEC Co	11/16/79
III-8 A.	G	NRC to CEC Co	11/16/79	V-8	X	NRC to CEC Co	11/16/79
III-8 B.	G	NRC to CEC Co	09/11/80	V-9	X	NRC to CEC Co	11/16/79
III-8 C.	6	CECo to NRC	03/10/80	V-10 A.	7	NRC to CEC Co	11/08/79
III-8 D.	G	NRC to CEC Co	11/16/79	V-10 B.	5(Sys)	NRC to CEC Co	11/14/80
III-9	G	NRC to CEC Co	11/16/79	V-11 A.	5	NRC to CEC Co	11/14/80
III-10 A.	7	NRC to CEC Co	01/26/81	V-11 B.	5(Sys) 6(Elec)	NRC to CEC Co CECo to NRC	11/14/80 09/22/80

DRESDEN 2

TOPIC NO.	STATUS	REMARKS		TOPIC NO.	STATUS	REMARKS	
V-12 A.	6	CECo to NRC	08/12/80	VI-7 D.	G	NRC to CEC Co	11/16/79
V-13	G	NRC to CEC Co	11/16/79	VI-7 E.	X	NRC to CEC Co	11/16/79
VI-1	3	CECo to NRC	07/27/79	VI-7 F.	X	NRC to CEC Co	11/16/79
VI-2 A.	G	NRC to CEC Co	11/16/79	VI-8	G	NRC to CEC Co	09/11/80
VI-2 B.	G	NRC to CEC Co	11/16/79	VI-9	X	NRC to CEC Co	11/16/79
VI-2 C.	X	NRC to CEC Co	11/16/79	VI-10 A.	3	CECo to NRC	09/24/80
VI-2 D.	3	CECo to NRC	11/20/80	VI-10 B.	6(Sys) 7(Elec)	CECo to NRC NRC to CEC Co	05/02/79 01/30/81
VI-3	3	CECo to NRC	11/20/80	VII-1 A.	2	NRC to CEC Co	10/22/80
VI-4	0(Sys) 1(Elec)			VII-1 B.	G	NRC to CEC Co	11/16/79
VI-5	1			VII-2	3	CECo to NRC	09/22/80
VI-6	G	NRC to CEC Co	11/16/79	VII-3	5(sys) 3(Elec)	NRC to CEC Co	11/14/80
VI-7 A. 1.	X	NRC to CEC Co	11/16/79	VII-4	G	NRC to CEC Co	11/16/79
VI-7 A. 2.	X	NRC to CEC Co	11/16/79	VII-5	G	NRC to CEC Co	11/16/79
VI-7 A. 3.	3			VII-6	G	NRC to CEC Co	11/16/79
VI-7 A. 4.	G	NRC to CEC Co	11/16/79	VII-7	X	NRC to CEC Co	11/16/79
VI-7 B.	X	NRC to CEC Co	11/16/79	VIII-1 A.	G	NRC to CEC Co	11/16/79
VI-7 C.	0			VIII-2	7	NRC to CEC Co	12/31/80
VI-7 C. 1.	1			VIII-3 A.	7	NRC to CEC Co	11/08/79
VI-7 C. 2.	0			VIII-3 B.	7	NRC to CEC Co	01/26/81
VI-7 C. 3.	X	NRC to CEC Co	11/16/79	VIII-4	5	NRC to CEC Co	06/12/80

DRESDEN 2

TOPIC NO.	STATUS	REMARKS		TOPIC NO.	STATUS	REMARKS	
IX-1	3	CECo to NRC	06/02/80	XV-10	X	NRC to CEC	11/16/79
IX-2	G	NRC to CEC	11/16/79	XV-11	0		
IX-3	3	CECo to NRC	11/29/79	XV-12	X	NRC to CEC	11/16/79
IX-4	X	NRC to CEC	11/16/79	XV-13	0(Sys) 0(Doses)		
IX-5	0			XV-14	0		
IX-6	G	NRC to CEC	11/16/79	XV-15	0		
X	X	NRC to CEC	11/16/79	XV-16	3	CECo to NRC	08/18/80
XI-1	G	NRC to CEC	11/16/79	XV-17	X	NRC to CEC	11/16/79
XI-2	G	NRC to CEC	11/16/79	XV-18	0(Sys) 0(Doses)		
XIII-1	G	NRC to CEC	11/16/79	XV-19	0(Sys) 0(Doses)		
XIII-2	G	NRC to CEC	11/16/79	XV-20	0		
XV-1	0			XV-21	G	NRC to CEC	11/16/79
XV-2	X	NRC to CEC	11/16/79	XV-22	G	NRC to CEC	11/16/79
XV-3	0			XV-23	X	NRC to CEC	11/16/79
XV-4	0			XV-24	G	NRC to CEC	11/16/79
XV-5	0			XVI	X	NRC to CEC	11/05/80
XV-6	X	NRC to CEC	11/16/79	XVII	G	NRC to CEC	11/16/79
XV-7	0						
XV-8	0						
XV-9	0						

FACILITY INFORMATION

FACILITY: GINNA

LICENSEE: ROCHESTER GAS & ELECTRIC

REGION/LOCATION: 15 MILES NORTH EAST OF ROCHESTER, NY.

DOCKET NO.: 05000244

POWER CAPACITY: 1520(THERMAL) 0490(ELECTRICAL)

OL NUMBER: DPR-18

N.S.S.S.: WEST.

A/E FIRM: GIL.

KEY PERSONNEL

SYSTEMATIC EVALUATION PROGRAM BRANCH CHIEF: W. RUSSELL

OPERATING REACTORS BRANCH CHIEF: D. CRUTCHFIELD

OPERATING REACTORS PROJECT MANAGER: R. SNAIDER

KEY FOR STATUS CODES

G - GENERIC

X - DELETED

0 - TOPIC NOT
STARTED

1 - QUESTIONS RECEIVED
FROM REVIEW BRANCH

2 - QUESTIONS SENT TO
UTILITY

3 - QUESTION RESPONSE
RECEIVED BY NRC

4 - DRAFT SE RECEIVED
FROM REVIEW BRANCH

5 - DRAFT SE SENT TO
UTILITY

6 - SE RESPONSE RECEIVED
BY NRC

7 - TOPIC COMPLETE

TOPIC NO. STATUS REMARKS

II-1 A.	0		
II-1 B.	0		
II-1 C.	0		
II-2 A.	6	RGE to NRC	01/19/81
II-2 B.	G	NRC to RGE	10/01/80
II-2 C.	6	RGE to NRC	01/30/79
II-2 D.	G	NRC to RGE	10/01/80
II-3 A.	5	NRC to RGE	12/12/80
II-3 B.	5	NRC to RGE	12/12/80
II-3 B. 1.	5	NRC to RGE	12/12/80
II-3 C.	5	NRC to RGE	12/12/80
II-4	5	NUREG/CR-1582	08/80
II-4 A.	5	NUREG/CR-1582	08/80
II-4 B.	5	NUREG/CR-1582	08/80
II-4 C.	5	NUREG/CR-1582	08/80
II-4 D.	0		
II-4 E.	X	NRC to RGE	11/16/79
II-4 F.	0		
III-1	2(Sys) 6(Elec)	NRC to RGE RGE to NRC	01/13/81 01/23/81
III-2	3	RGE to NRC	11/14/79

GINNA

TOPIC NO.	STATUS	REMARKS		TOPIC NO.	STATUS	REMARKS
III-3 A.	3	RGE to NRC	11/14/79	III-10 B.	7	RGE to NRC 08/29/79
III-3 B.	X	NRC to RGE	12/31/80	III-10 C.	X	NRC to RGE 11/16/79
III-3 C.	0			III-11	5	NRC to RGE 01/07/81
III-4 A.	0			III-12	3	RGE to NRC 10/31/80
III-4 B.	7	NRC to RGE	04/18/79	IV-1 A.	7	NRC to RGE 05/29/79
III-4 C.	0			IV-2	3	RGE to NRC 01/19/81
III-4 D.	0			IV-3	X	NRC to RGE 11/16/79
III-5 A.	0			V-1	G	NRC to RGE 11/16/79
III-5 B.	5	NRC to RGE	06/24/80	V-2	X	NRC to RGE 11/16/79
III-6	5	NRC to RGE	01/07/81	V-3	G	NRC to RGE 11/16/79
III-7 A.	X	NRC to RGE	11/16/79	V-4	G	NRC to RGE 11/16/79
III-7 B.	3	RGE to NRC	11/14/79	V-5	4	
III-7 C.	0			V-6	7	NRC to RGE 03/05/80
III-7 D.	7	NRC to RGE	05/08/80	V-7	G	NRC to RGE 11/16/79
III-8 A.	G	NRC to RGE	11/16/79	V-8	G	NRC to RGE 11/16/79
III-8 B.	X	NRC to RGE	10/01/80	V-9	X	NRC to RGE 11/16/79
III-8 C.	7	RGE to NRC	12/07/79	V-10 A.	7	NRC to RGE 02/02/79
III-8 D.	G	NRC to RGE	11/16/79	V-10 B.	6(Sys)	RGE to NRC 01/13/81
III-9	G	NRC to RGE	11/16/79	V-11 A.	6(Elec) 6(Sys)	RGE to NRC 01/08/81 RGE to NRC 01/13/81
III-10 A.	6	RGE to NRC	01/08/81	V-11 B.	6(Sys) 6(Elec)	RGE to NRC 01/13/81 RGE to NRC 01/08/81

TOPIC NO.	STATUS	REMARKS		TOPIC NO.	STATUS	REMARKS	
V-12 A.	X	NRC to RGE	11/16/79	VI-7 D.	G	NRC to RGE	11/16/79
V-13	G	NRC to RGE	11/16/79	VI-7 E.	G	NRC to RGE	11/16/79
VI-1	1			VI-7 F.	6	RGE to NRC	01/08/81
VI-2 A.	X	NRC to RGE	11/16/79	VI-8	G	NRC to RGE	10/01/80
VI-2 B.	G	NRC to RGE	11/16/79	VI-9	X	NRC to RGE	11/16/79
VI-2 C.	X	NRC to RGE	11/16/79	VI-10 A.	7	NRC to RGE	12/15/80
VI-2 D.	3			VI-10 B.	X	NRC to RGE	11/16/79
VI-3	3			VII-1 A.	7	RGE to NRC	01/28/81
VI-4	0(Sys) 7(Elec)	NRC to RGE	01/12/81	VII-1 B.	G	NRC to RGE	11/16/79
VI-5	0			VII-2	6	RGE to NRC	01/23/81
VI-6	G	NRC to RGE	11/16/79	VII-3	6(Sys) 6(Elec)	RGE to NRC RGE to NRC	01/13/81 01/23/81
VI-7 A. 1.	7	NRC to RGE	05/01/78	VII-4	G	NRC to RGE	11/16/79
VI-7 A. 2.	G	NRC to RGE	11/16/79	VII-5	G	NRC to RGE	11/16/79
VI-7 A. 3.	7	NRC to RGE	12/15/80	VII-6	G	NRC to RGE	11/16/79
VI-7 A. 4.	X	NRC to RGE	11/16/79	VII-7	X	NRC to RGE	11/16/79
VI-7 B.	2	NRC to RGE	09/16/80	VIII-1 A.	G	NRC to RGE	11/16/79
VI-7 C.	7	NRC to RGE	05/14/75	VIII-2	5	NRC to RGE	12/12/80
VI-7 C. 1.	6	RGE to NRC	01/08/81	VIII-3 A.	7	NRC to RGE	04/18/79
VI-7 C. 2.	7	NRC to RGE	05/14/75	VIII-3 B.	6	RGE to NRC	01/08/81
VI-7 C. 3.	X	NRC to RGE	11/16/79	VIII-4	6	RGE to NRC	07/21/80

GINNA

TOPIC NO.	STATUS	REMARKS		TOPIC NO.	STATUS	REMARKS
IX-1	0			XV-10	0	
IX-2	G	NRC to RGE	11/16/79	XV-11	X	NRC to RGE 10/01/80
IX-3	3			XV-12	0(Sys) 0(Doses)	
IX-4	0			XV-13	X	NRC to RGE 11/16/79
IX-5	0			XV-14	0	
IX-6	G	NRC to RGE	11/16/79	XV-15	0	
X	0			XV-16	3	RGE to NRC 06/18/80
XI-1	G	NRC to RGE	11/16/79	XV-17	0(Sys) 0(Doses)	
XI-2	G	NRC to RGE	11/16/79	XV-18	X	NRC to RGE 03/11/80
XIII-1	G	NRC to RGE	11/16/79	XV-19	0(Sys) 0(Doses)	
XIII-2	G	NRC to RGE	11/16/79	XV-20	0	
XV-1	3	RGE to NRC	06/03/80	XV-21	G	NRC to RGE 11/16/79
XV-2	3(Sys) 0(Doses)	RGE to NRC	06/03/80	XV-22	G	NRC to RGE 11/16/79
XV-3	3	RGE to NRC	06/03/80	XV-23	G	NRC to RGE 11/16/79
XV-4	0			XV-24	G	NRC to RGE 11/16/79
XV-5	0			XVI	X	NRC to RGE 11/05/80
XV-6	0			XVII	G	NRC to RGE 11/16/79
XV-7	3	RGE to NRC	06/03/80			
XV-8	3	RGE to NRC	06/03/80			
XV-9	0					

HADDAM NECK

FACILITY INFORMATION

FACILITY: HADDAM NECK

LICENSEE: CONNECTICUT YANKEE ATOMIC POWER

REGION/LOCATION: 13 MILES EAST OF MERIDEN, CT.

DOCKET NO.: 05000213

POWER CAPACITY: 1825(THERMAL 0575(ELECTRICAL)

OL NUMBER: DPR-61

N.S.S.S.: WEST.

A/E FIRM: S&V/

KEY PERSONNEL

SYSTEMATIC EVALUATION PROGRAM BRANCH CHIEF: W. RUSSELL

OPERATING REACTORS BRANCH CHIEF: D. CRUTCHFIELD

OPERATING REACTORS PROJECT MANAGER: R. CARUSO

KEY FOR STATUS CODES

G - GENERIC

X - DELETED

0 - TOPIC NOT
STARTED

1 - QUESTIONS RECEIVED
FROM REVIEW BRANCH

2 - QUESTIONS SENT TO
UTILITY

3 - QUESTION RESPONSE
RECEIVED BY NRC

4 - DRAFT SE RECEIVED
FROM REVIEW BRANCH

5 - DRAFT SE SENT TO
UTILITY

6 - SE RESPONSE RECEIVED
BY NRC

7 - TOPIC COMPLETE

TOPIC NO. STATUS REMARKS

II-1 A.	0		
II-1 B.	0		
II-1 C.	0		
II-2 A.	6	CYAPCo to NRC	01/22/81
II-2 B.	G	NRC to CYAPCo	10/01/80
II-2 C.	7	CYAPCo to NRC	02/16/79
II-2 D.	G	NRC to CYAPCo	10/01/80
II-3 A.	3	Site Visit	
II-3 B.	3	Site Visit	
II-3 B. 1.	3	Site Visit	
II-3 C.	3	Site Visit	
II-4	5	NUREG/CR- 1582	08/80
II-4 A.	5	NUREG/CR- 1582	08/80
II-4 B.	5	NUREG/CR- 1582	08/80
II-4 C.	5	NUREG/CR- 1582	08/80
II-4 D.	0		
II-4 E.	X	NRC to CYAPCo	04/16/79
II-4 F.	0		
III-1	3(sys) 0(Elec)	CYAPCo to NRC	09/28/79
III-2	3	CYAPCo to NRC	09/07/79

HADDAM NECK

TOPIC NO.	STATUS	REMARKS	TOPIC NO.	STATUS	REMARKS
III-3 A.	3	CYAPCo to NRC 09/07/79	III-10 B.	7	NRC to CYAPCo 08/26/80
III-3 B.	0		III-10 C.	X	NRC to CYAPCo 04/16/79
III-3 C.	0		III-11	3	
III-4 A.	0(AEB) 1(SEB)		III-12	3	CYAPCo to NRC 10/31/80
III-4 B.	0(MTEB) 0(SEB)		IV-1 A.	7	CYAPCo to NRC 06/25/79
III-4 C.	0(RSB) 0(SEB)		IV-2	2	NRC to CYAPCo 12/15/80
III-4 D.	0		IV-3	X	NRC to CYAPCo 11/16/79
III-5 A.	3	CYAPCo to NRC 02/07/80	V-1	G	NRC to CYAPCo 04/16/79
III-5 B.	3		V-2	X	NRC to CYAPCo 04/16/79
III-6	2	NRC to CYAPCo 08/04/80	V-3	G	NRC to CYAPCo 04/16/79
III-7 A.	X	NRC to CYAPCo 11/16/79	V-4	G	NRC to CYAPCo 11/16/79
III-7 B.	3	CYAPCo to NRC 09/07/79	V-5	7	
III-7 C.	X	NRC to CYAPCo 04/16/79	V-6	7	NRC to CYAPCo 03/05/80
III-7 D.	0		V-7	G	NRC to CYAPCo 04/16/79
III-8 A.	G	NRC to CYAPCo 11/16/79	V-8	G	NRC to CYAPCo 04/16/79
III-8 B.	X	NRC to CYAPCo 10/01/80	V-9	X	NRC to CYAPCo 11/16/79
III-8 C.	6	CYAPCo to NRC 12/18/79	V-10 A.	7	NRC to CYAPCo 01/13/81
III-8 D.	G	NRC to CYAPCo 11/16/79	V-10 B.	6(Sys)	CYAPCo to NRC 09/28/79
III-9	G	NRC to CYAPCo 11/16/79	V-11 A.	7	CYAPCo to NRC 09/04/80
III-10 A.		CYAPCo to NRC 09/04/80	V-11 B.	6(Sys) 4(Elec)	CYAPCo to NRC Part of VII-3 09/28/79

HADDAM NECK

TOPIC NO.	STATUS	REMARKS		TOPIC NO.	STATUS	REMARKS	
V-12 A.	X	NRC to CYAPCo	04/16/79	VI-7 D.	G	NRC to CYAPCo	11/16/79
V-13	G	NRC to CYAPCo	04/16/79	VI-7 E.	G	NRC to CYAPCo	11/16/79
VI-1	3	CYAPCo to NRC	10/31/79	VI-7 F.	X	NRC to CYAPCo	04/16/79
VI-2 A.	X	NRC to CYAPCo	04/16/79	VI-8	G	NRC to CYAPCo	10/01/80
VI-2 B.	G	NRC to CYAPCo	04/16/79	VI-9	X	NRC to CYAPCo	11/16/79
VI-2 C.	X	NRC to CYAPCo	04/16/79	VI-10 A.	0		
VI-2 D.	2			VI-10 B.	X	NRC to CYAPCo	04/16/79
VI-3	2			VII-1 A.	0		
VI-4	0(Sys) 7(Elec)	CYAPCo to NRC	12/08/80	VII-1 B.	G	NRC to CYAPCo	04/16/79
VI-5	3	CYAPCo to NRC	11/05/80	VII-2	0		
VI-6	G	NRC to CYAPCo	11/16/79	VII-3	6(Sys) 7(Elec.)	NRC to CYAPCo CYAPCo to NRC	09/28/79 01/22/81
VI-7 A. 1.	7	NRC to CYAPCo	10/22/77	VII-4	G	NRC to CYAPCo	04/16/79
VI-7 A. 2.	X	NRC to CYAPCo	04/16/79	VII-5	G	NRC to CYAPCo	04/16/79
VI-7 A. 3.	0			VII-6	G	NRC to CYAPCo	04/16/79
VI-7 A. 4.	X	NRC to CYAPCo	04/16/79	VII-7	X	NRC to CYAPCo	04/16/79
VI-7 B.	0			VIII-1 A.	G	NRC to CYAPCo	04/16/79
VI-7 C.	0			VIII-2	6	CYAPCo to NRC	10/03/80
VI-7 C. 1.	7	CYAPCo to NRC	09/04/80	VIII-3 A.	7	CYAPCo to NRC	02/16/79
VI-7 C. 2.	0			VIII-3 B.	7	CYAPCo to NRC	01/22/81
VI-7 C. 3.	3			VIII-4	0		

HADDAM NECK

TOPIC NO.	STATUS	REMARKS	TOPIC NO.	STATUS	REMARKS
IX-1	0		XV-10	0	
IX-2	G	NRC to CYAPCo 11/10/79	XV-11	X	NRC to CYAPCo 10/01/80
IX-3	2		XV-12	0(Sys) 0(Doses)	
IX-4	0		XV-13	X	NRC to CYAPCo 11/16/79
IX-5	0		XV-14	0	
IX-6	G	NRC to CYAPCo 04/16/79	XV-15	0	
X	0		XV-16	3	CYAPCo to NRC 06/20/80
XI-1	G	NRC to CYAPCo 04/16/79	XV-17	0(Sys) 0(Doses)	
XI-2	G	NRC to CYAPCo 11/16/79	XV-18	X	NRC to CYAPCo 10/01/80
XIII-1	G	NRC to CYAPCo 11/16/79	XV-19	0(Sys) 0(Doses)	
XIII-2	G	NRC to CYAPCo 11/16/79	XV-20	0	
XV-1	0		XV-21	G	NRC to CYAPCo 11/16/79
XV-2	0(Sys) 0(Doses)		XV-22	G	NRC to CYAPCo 04/16/79
XV-3	0		XV-23	G	NRC to CYAPCo 11/16/79
XV-4	0		XV-24	G	NRC to CYAPCo 11/16/79
XV-5	0		XVI	X	NRC to CYAPCo 11/05/80
XV-6	0		XVII	G	NRC to CYAPCo 11/16/79
XV-7	0				
XV-8	0				
XV-9	0				

LACROSSE

FACILITY INFORMATION

FACILITY: LACROSSE

LICENSEE: DAIRYLAND POWER

REGION/LOCATION: 19 MILES SOUTH OF LACROSSE, WISC.

DOCKET NO.: 05000409

POWER CAPACITY: 0165(THERMAL) 0050(ELECTRICAL)

OL NUMBER: DPR-45

N.S.S.S.: AC.

A/E FIRM: S&L

KEY PERSONNEL

SYSTEMATIC EVALUATION PROGRAM BRANCH CHIEF: W. RUSSELL

OPERATING REACTORS BRANCH CHIEF: D. CRUTCHFIELD

OPERATING REACTORS PROJECT MANAGER: J. SHEA

KEY FOR STATUS CODES

G - GENERIC

X - DELETED

3 - TOPIC NOT
STARTED

1 - QUESTIONS RECEIVED
FROM REVIEW BRANCH

2 - QUESTIONS SENT TO
UTILITY

3 - QUESTION RESPONSE
RECEIVED BY NRC

4 - DRAFT SE RECEIVED
FROM REVIEW BRANCH

5 - DRAFT SE SENT TO
UTILITY

6 - SE RESPONSE RECEIVED
BY NRC

7 - TOPIC COMPLETE

TOPIC NO. STATUS REMARKS

II-1 A.	0		
II-1 B.	0		
II-1 C.	0		
II-2 A.	5	NRC to DPC	12/15/80
II-2 B.	G	NRC to DPC	09/26/80
II-2 C.	0		
II-2 D.	G	NRC to DPC	09/25/80
II-3 A.	0		
II-3 B.	0		
II-3 B. 1.	0		
II-3 C.	0		
II-4	5	NUREG/CR-1582	08/80
II-4 A.	5	NUREG/CR-1582	08/80
II-4 B.	5	NUREG/CR-1582	08/80
II-4 C.	5	NUREG/CR-1582	08/80
II-4 D.	3	Site Visit	07/10/79
II-4 E.	0		
II-4 F.	5		
III-1	1(Sys) 0(Elec)		
III-2	2	NRC to DPC	08/09/79

LACROSSE

TOPIC NO.	STATUS	REMARKS		TOPIC NO.	STATUS	REMARKS
III-3 A.	2	NRC to DPC	08/09/79	III-10 B.	X	NRC to DPC 10/29/79
III-3 B.	0			III-10 C.	X	NRC to DPC 10/29/79
III-3 C.	0			III-11	3	DPC to NRC 06/11/79
III-4 A.	0(AEB) 0(SEB)			III-12	3	DPC to NRC 10/31/80
III-4 B.	0(MTEB) 0(SEB)			IV-1 A.	7	NRC to DPC 04/19/79
III-4 C.	0			IV-2	2	NRC to DPC 12/15/80
III-4 D.	0			IV-3	X	NRC to DPC 10/29/79
III-5 A.	2	DPC to NRC	01/04/80	V-1	G	NRC to DPC 10/29/79
III-5 B.	2	NRC to DPC	01/04/80	V-2	X	NRC to DPC 10/29/79
III-6	3	DPC to NRC	10/14/80	V-3	X	NRC to DPC 10/29/79
III-7 A.	X	NRC to DPC	10/29/79	V-4	G	NRC to DPC 10/29/79
III-7 B.	2	NRC to DPC	08/09/79	V-5	4	
III-7 C.	X	NRC to DPC	10/29/79	V-6	7	NRC to DPC 03/05/80
III-7 D.	2	NRC to DPC	08/09/79	V-7	X	NRC to DPC 10/29/79
III-8 A.	G	NRC to DPC	10/29/79	V-8	X	NRC to DPC 10/29/79
III-8 B.	X	NRC to DPC	09/26/80	V-9	X	NRC to DPC 10/29/79
III-8 C.	5	NRC to DPC	12/15/80	V-10 A.	7	NRC to DPC 01/07/81
III-8 D.	G	NRC to DPC	10/29/79	V-10 B.	4(Sys)	
III-9	G	NRC to DPC	10/29/79	V-11 A.	5	NRC to DPC 07/10/80
III-10 A.	5	NRC to DPC	07/10/80	V-11 B.	4(Sys) 0(Elec)	

LACROSSE

TOPIC NO.	STATUS	REMARKS	TOPIC NO.	STATUS	REMARKS
V-12 A.	7	NRC to DPC 04/30/79	VI-7 D.	G	NRC to DPC 10/29/79
V-13	G	NRC to DPC 10/29/79	VI-7 E.	X	NRC to DPC 10/29/79
VI-1	3	DPC to NRC 08/23/79	VI-7 F.	X	NRC to DPC 10/29/79
VI-2 A.	X	NRC to DPC 10/29/79	VI-8	G	NRC to DPC 09/26/80
VI-2 B.	G	NRC to DPC 10/29/79	VI-9	X	NRC to DPC 10/29/79
VI-2 C.	X	NRC to DPC 10/29/79	VI-10 A.	0	
VI-2 D.	3	DPC to NRC 04/26/79	VI-10 B.	X	NRC to DPC 10/29/79
VI-3	3	DPC to NRC 04/26/79	VII-1 A.	0	
VI-4	0(Sys) 1(Elec)		VII-1 B.	G	NRC to DPC 10/29/79
VI-5	1		VII-2	0	
VI-6	G	NRC to DPC 10/29/79	VII-3	4(Sys) 3(Elec)	
VI-7 A. 1.	X	NRC to DPC 10/29/79	VII-4	G	NRC to DPC 10/29/79
VI-7 A. 2.	X	NRC to DPC 10/29/79	VII-5	G	NRC to DPC 10/29/79
VI-7 A. 3.	0		VII-6	G	NRC to DPC 10/29/79
VI-7 A. 4.	X	NRC to DPC 10/29/79	VII-7	X	NRC to DPC 10/29/79
VI-7 B.	X	NRC to DPC 10/29/79	VIII-1 A.	G	NRC to DPC 10/29/79
VI-7 C.	0		VIII-2	5	NRC to DPC 08/20/80
VI-7 C. 1.	5	NRC to DPC 07/10/80	VIII-3 A.	7	NRC to DPC 06/05/79
VI-7 C. 2.	0		VIII-3 B.	5	NRC to DPC 07/10/80
VI-7 C. 3.	X	NRC to DPC 10/29/79	VIII-4	6	DPC to NRC 10/08/80

LACROSSE

TOPIC NO.	STATUS	REMARKS	TOPIC NO.	STATUS	REMARKS
IX-1	0		XV-10	X	NRC to DPC 10/29/79
IX-2	G	NRC to DPC 10/29/79	XV-11	0	
IX-3	2		XV-12	X	NRC to DPC 10/29/79
IX-4	X	NRC to DPC 10/29/79	XV-13	0(Doses) 0(Sys)	
IX-5	0		XV-14	0	
IX-6	G	NRC to DPC 10/29/79	XV-15	0	
X	X	NRC to DPC 10/29/79	XV-16	0	
XI-1	G	NRC to DPC 10/29/79	XV-17	X	NRC to DPC 10/29/79
XI-2	G	NRC to DPC 10/29/79	XV-18	0(Doses) 0(Sys)	
XIII-1	G	NRC to DPC 10/29/79	XV-19	0(Doses) 0(Sys)	
XIII-2	G	NRC to DPC 10/29/79	XV-20	0	
XV-1	0		XV-21	G	NRC to DPC 10/29/79
XV-2	X	NRC to DPC 10/29/79	XV-22	G	NRC to DPC 10/29/79
XV-3	0		XV-23	X	NRC to DPC 10/29/79
XV-4	0		XV-24	G	NRC to DPC 10/28/79
XV-5	0		XVI	X	NRC to DPC 11/05/80
XV-6	X	NRC to DPC 10/29/79	XVII	G	NRC to DPC 10/29/79
XV-7	0				
XV-8	0				
XV-9	0				

MILLSTONE 1

FACILITY INFORMATION

FACILITY: MILLSTONE 1

LICENSEE: NORTHEAST NUCLEAR ENERGY

REGION/LOCATION: 5 MILES SOUTH WEST OF NEW LONDON, CONN.

DOCKET NO.: 05000245

POWER CAPACITY: 2011(THERMAL) 0660(ELECTRICAL)

OL NUMBER: DPR-21

N.S.S.S.: GE.

A/E FIRM: EBASCO

KEY PERSONNEL

SYSTEMATIC EVALUATION PROGRAM BRANCH CHIEF: W. RUSSELL

OPERATING REACTORS BRANCH CHIEF: D. CRUTCHFIELD

OPERATING REACTORS PROJECT MANAGER: J. SHEA

KEY FOR STATUS CODES

G - GENERIC

X - DELETED

0 - TOPIC NOT
STARTED

1 - QUESTIONS RECEIVED
FROM REVIEW BRANCH

2 - QUESTIONS SENT TO
UTILITY

3 - QUESTION RESPONSE
RECEIVED BY NRC

4 - DRAFT SE RECEIVED
FROM REVIEW BRANCH

5 - DRAFT SE SENT TO
UTILITY

6 - SE RESPONSE RECEIVED
BY NRC

7 - TOPIC COMPLETE

TOPIC NO. STATUS REMARKS

II-1 A.	0		
II-1 B.	0		
II-1 C.	0		
II-2 A.	6	NU to NRC	01/22/81
II-2 B.	G	NRC to NU	09/26/80
II-2 C.	0		
II-2 D.	G	NRC to NU	09/26/80
II-3 A.	0		
II-3 B.	0		
II-3 E. 1.	0		
II-3 C.	0		
II-4	5	NUREG/CR-1582	08/80
II-4 A.	5	NUREG/CR-1582	08/80
II-4 B.	5	NUREG/CR-1582	08/80
II-4 C.	5	NUREG/CR-1582	08/80
II-4 D.	0		
II-4 E.	X	NRC to NU	11/16/79
II-4 F.	0		
III-1	0(Elec) 1(Sys)		
III-2	3	NU to NRC	08/29/79

MILLSTONE 1

TOPIC NO.	STATUS	REMARKS	TOPIC NO.	STATUS	REMARKS
III-3 A.	4		III-10 B.	X	NRC to NU 11/16/79
III-3 B.	X	NRC to NU 12/26/80	III-10 C.	6	NU to NRC 08/29/79
III-3 C.	0		III-11	3	
III-4 A.	3(SEB) 0(AEB)	NU to NRC 12/05/80	III-12	3	NU to NRC 10/31/80
III-4 B.	3(SEB) 0(MTEB)	NU to NRC 12/05/80	IV-1 A.	7	NU to NRC 02/12/79
III-4 C.	3(SEB) 0(RSB)	NU to NRC 12/05/80	IV-2	2	NRC to NU 12/15/80
III-4 D.	0		IV-3	G	NRC to NU 11/16/79
III-5 A.	3	NU to NRC 11/08/79	V-1	G	NRC to NU 11/16/79
III-5 B.	1		V-2	X	NRC to NU 11/16/79
III-6	2	NRC to NU 09/02/80	V-3	X	NRC to NU 11/16/79
III-7 A.	X	NRC to NU 11/16/79	V-4	G	NRC to NU 11/16/79
III-7 B.	3	NU to NRC 08/29/79	V-5	4	
III-7 C.	X	NRC to NU 11/16/79	V-6	7	NRC to NU 03/05/80
III-7 D.	5	NRC to NU 01/07/81	V-7	X	NRC to NU 11/16/79
III-8 A.	G	NRC to NU 11/16/79	V-8	X	NRC to NU 11/16/79
III-8 B.	G	NRC to NU 09/26/80	V-9	X	NRC to NU 11/16/79
III-8 C.	6	NU to NRC 01/31/80	V-10 A.	7	NU to NRC 03/05/79
III-8 D.	G	NRC to NU 11/16/79	V-10 B.	5(Sys)	NRC to NU 11/14/80
III-9	G	NRC to NU 11/16/79	V-11 A.	5(Sys) 5(Elec)	NRC to NU 11/14/80 NRC to NU 01/13/80
III-10 A.	5	NRC to NU 01/13/80	V-11 B.	5(Sys) 0(Elec)	NRC to NU 11/14/80

MILLSTONE 1

TOPIC NO.	STATUS	REMARKS	TOPIC NO.	STATUS	REMARKS
V-12 A.	7	NRC to NU 12/17/79	VI-7 D.	G	NRC to NU 11/16/79
V-13	G	NRC to NU 11/16/79	VI-7 E.	X	NRC to NU 11/16/79
VI-1	3	NU to NRC 10/10/80	VI-7 F.	X	NRC to NU 11/16/79
VI-2 A.	G	NRC to NU 11/16/79	VI-8	G	NRC to NU 09/26/80
VI-2 B.	G	NRC to NU 11/16/79	VI-9	X	NRC to NU 11/16/79
VI-2 C.	X	NRC to NU 11/16/79	VI-10 A.	0	
VI-2 D.	2		VI-10 B.	6(Sys) 7(Elec)	NU to NRC 04/27/79
VI-3	2		VII-1 A.	2	NRC to NU 01/24/81
VI-4	0(Sys) 2(Elec)	NRC to NU 12/08/80	VII-1 B.	G	NRC to NU 11/16/79
VI-5	3	NU to NRC 11/28/79	VII-2	2	NRC to NU 01/24/81
VI-6	G	NRC to NU 11/16/79	VII-3	5(Sys) 0(Elec)	NRC to NU 11/14/80
VI-7 A. 1.	X	NRC to NU 11/16/79	VII-4	G	NRC to NU 11/16/79
VI-7 A. 2.	X	NRC to NU 11/16/79	VII-5	G	NRC to NU 11/16/79
VI-7 A. 3.	0		VII-6	G	NRC to NU 11/16/79
VI-7 A. 4.	G	NRC to NU 11/16/79	VII-7	X	NRC to NU 11/16/79
VI-7 B.	X	NRC to NU 11/16/79	VIII-1 A.	G	NRC to NU 11/16/79
VI-7 C.	0		VIII-2	5	NRC to NU 08/20/80
VI-7 C. 1.	5	NRC to NU 01/13/81	VIII-3 A.	7	NRC to NU 04/18/79
VI-7 C. 2.	0		VIII-3 B.	5	NRC to NU 01/13/81
VI-7 C. 3.	X	NRC to NU 11/16/79	VIII-4	7	NRC to NU 10/30/80

MILLSTONE 1

TOPIC NO.	STATUS	REMARKS	TOPIC NO.	STATUS	REMARKS
IX-1	0		XV-10	X	NRC to NU 11/16/79
IX-2	G	NRC to NU 11/16/79	XV-11	0	
IX-3	2		XV-12	X	NRC to NU 11/16/79
IX-4	X	NRC to NU 11/16/79	XV-13	0(Sys) 0(Doses)	
IX-5	0		XV-14	0	
IX-6	G	NRC to NU 11/16/79	XV-15	0	
X	X	NRC to NU 11/16/79	XV-16	0	
XI-1	G	NRC to NU 11/16/79	XV-17	X	NRC to NU 11/16/79
XI-2	G	NRC to NU 11/16/79	XV-18	0(Sys) 0(Doses)	
XIII-1	G	NRC to NU 11/16/79	XV-19	0(Sys) 0(Doses)	
XIII-2	G	NRC to NU 11/16/79	XV-20	0	
XV-1	0		XV-21	G	NRC to NU 11/16/79
XV-2	X	NRC to NU 11/16/79	XV-22	G	NRC to NU 11/16/79
XV-3	0		XV-23	X	NRC to NU 11/16/79
XV-4	0		XV-24	G	NRC to NU 11/16/79
XV-5	0		XVI	X	NRC to NU 11/05/80
XV-6	X	NRC to NU 11/16/79	XVII	G	NRC to NU 11/16/79
XV-7	0				
XV-8	0				
XV-9	0				

OYSTER CREEK

FACILITY INFORMATION

FACILITY: OYSTER CREEK 1

LICENSEE: JERSEY CENTRAL POWER & LIGHT

REGION/LOCATION: 9 MILES SOUTH OF TOMS RIVER, NJ.

DOCKET NO.: 05000219

POWER CAPACITY: 1930(THERMAL) 0650(ELECTRICAL)

OL NUMBER: DPR-16

N.S.S.S.: GE.

A/E FIRM: B&R

KEY PERSONNEL

SYSTEMATIC EVALUATION PROGRAM BRANCH CHIEF: W. RUSSELL

OPERATING REACTORS BRANCH CHIEF: D. CRUTCHFIELD

OPERATING REACTORS PROJECT MANAGER: W. PAULSON

KEY FOR STATUS CODES

G - GENERIC

X - DELETED

0 - TOPIC NOT
STARTED

1 - QUESTIONS RECEIVED
FROM REVIEW BRANCH

2 - QUESTIONS SENT TO
UTILITY

3 - QUESTION RESPONSE
RECEIVED BY NRC

4 - DRAFT SE RECEIVED
FROM REVIEW BRANCH

5 - DRAFT SE SENT TO
UTILITY

6 - SE RESPONSE RECEIVED
BY NRC

7 - TOPIC COMPLETE

TOPIC NO. STATUS REMARKS

II-1 A.	G		
II-1 B.	0		
II-1 C.	0		
II-2 A.	5	NRC to JCPL	12/17/80
II-2 B.	G	NRC to JCPL	09/26/80
II-2 C.	0		
II-2 D.	G	NRC to JCPL	09/26/80
II-3 A.	1		
II-3 B.	1		
II-3 B. 1.	1		
II-3 C.	1		
II-4	5	NUREG/CR-1582	08/80
II-4 A.	5	NUREG/CR-1582	08/80
II-4 B.	5	NUREG/CR-1582	08/80
II-4 C.	5	NUREG/CR-1582	08/80
II-4 D.	0		
II-4 E.	X	NRC to JCPL	11/16/79
II-4 F.	0		
III-1	3(Sys) 0(Elec)		
III-2	3	JCPL to NRC	12/07/79

OYSTER CREEK

TOPIC NO.	STATUS	REMARKS		TOPIC NO.	STATUS	REMARKS	
III-3 A.	3	JCPL to NRC	12/07/79	III-10 B.	X	NRC to JCPL	11/16/79
III-3 B.	X	NRC to JCPL	12/26/80	III-10 C.	0		
III-3 C.	0			III-11	3		
III-4 A.	0			III-12	3	JCPL to NRC	10/28/80
III-4 B.	0			IV-1 A.	7	NRC to JCPL	07/10/79
III-4 C.	2	NRC to JCPL	01/19/81	IV-2	2	NRC to JCPL	12/15/80
III-4 D.	0			IV-3	X	NRC to JCPL	11/16/79
III-5 A.	1			V-1	G	NRC to JCPL	11/16/79
III-5 B.	7	NRC to JCPL	07/10/80	V-2	X	NRC to JCPL	11/16/79
III-6	4			V-3	X	NRC to JCPL	11/16/79
III-7 A.	X	NRC to JCPL	11/16/79	V-4	G	NRC to JCPL	11/16/79
III-7 B.	3	JCPL to NRC	12/07/79	V-5	4		
III-7 C.	X	NRC to JCPL	11/16/79	V-6	7	NRC to JCPL	03/05/80
III-7 D.	3	JCPL to NRC	12/07/79	V-7	X	NRC to JCPL	11/16/79
III-8 A.	G	NRC to JCPL	11/16/79	V-8	X	NRC to JCPL	11/16/79
III-8 B.	X	NRC to JCPL	09/26/80	V-9	X	NRC to JCPL	11/16/79
III-8 C.	7	NRC to JCPL	10/30/80	V-10 A.	7	JCPL to NRC	05/15/79
III-8 D.	G	NRC to JCPL	11/16/79	V-10 B.	7(Sys)	NRC to JCPL	09/25/80
III-9	G	NRC to JCPL	11/16/79	V-11 A.	7	NRC to JCPL	12/15/80
III-10 A.	7	NRC to JCPL	12/15/80	V-11 B.	7(Sys) 0(Elec)	NRC to JCPL	09/25/80

OYSTER CREEK

TOPIC NO.	STATUS	REMARKS	TOPIC NO.	STATUS	REMARKS
V-12 A.	4		VI-7 D.	G	NRC to JCPL 11/16/79
V-13	G	NRC to JCPL 11/16/79	VI-7 E.	X	NRC to JCPL 11/16/79
VI-1	2	NRC to JCPL 06/06/79	VI-7 F.	X	NRC to JCPL 11/16/79
VI-2 A.	G	NRC to JCPL 11/16/79	VI-8	G	NRC to JCPL 09/26/80
VI-2 B.	G	NRC to JCPL 11/16/79	VI-9	X	NRC to JCPL 11/16/79
VI-2 C.	X	NRC to JCPL 11/16/79	VI-10 A.	0	
VI-2 D.	2		VI-10 B.	X	NRC to JCPL 11/16/79
VI-3	2		VII-1 A.	2	NRC to JCPL 12/26/80
VI-4	0(Sys) 2(Elec)	NRC to JCPL 12/08/80	VII-1 B.	G	NRC to JCPL 11/16/79
VI-5	1		VII-2	0	
VI-6	G	NRC to JCPL 11/16/79	VII-3	7(Sys) 0(Elec)	NRC to JCPL 09/25/80
VI-7 A. 1.	X	NRC to JCPL 11/16/79	VII-4	G	NRC to JCPL 11/16/79
VI-7 A. 2.	X	NRC to JCPL 11/16/79	VII-5	G	NRC to JCPL 11/16/79
VI-7 A. 3.	0		VII-6	G	NRC to JCPL 11/16/79
VI-7 A. 4.	G	NRC to JCPL 11/16/79	VII-7	X	NRC to JCPL 11/16/79
VI-7 B.	X	NRC to JCPL 11/16/79	VIII-1 A.	G	NRC to JCPL 11/16/79
VI-7 C.	0		VIII-2	7	NRC to JCPL 12/26/80
VI-7 C. 1.	7	NRC to JCPL 12/15/80	VIII-3 A.	7	NRC to JCPL 01/16/81
VI-7 C. 2.	7		VIII-3 B.	7	NRC to JCPL 12/15/80
VI-7 C. 3.	X	NRC to JCPL 11/16/79	VIII-4	7	NRC to JCPL 12/15/80

OYSTER CREEK

TOPIC NO.	STATUS	REMARKS	TOPIC NO.	STATUS	REMARKS
IX-1	3	JCPL to NRC 12/14/79	XV-10	X	NRC to JCPL 11/16/79
IX-2	G	NRC to JCPL 11/16/79	XV-11	0	
IX-3	4		XV-12	X	NRC to JCPL 11/16/79
IX-4	X	NRC to JCPL 11/16/79	XV-13	0(Doses) 0(Sys)	
IX-5	0		XV-14	0	
IX-6	G	NRC to JCPL 11/16/79	XV-15	0	
X	X	NRC to JCPL 11/16/79	XV-16	0	
XI-1	G	NRC to JCPL 11/16/79	XV-17	X	NRC to JCPL 11/16/79
XI-2	G	NRC to JCPL 11/16/79	XV-18	0(Doses) 0(Sys)	
XIII-1	G	NRC to JCPL 11/16/79	XV-19	0(doses) 0(Sys)	
XIII-2	G	NRC to JCPL 11/16/79	XV-20	0	
XV-1	0		XV-21	G	NRC to JCPL 11/16/79
XV-2	X	NRC to JCPL 11/16/79	XV-22	G	NRC to JCPL 11/16/79
XV-3	0		XV-23	X	NRC to JCPL 11/16/79
XV-4	0		XV-24	G	NRC to JCPL 11/16/79
XV-5	0		XVI	X	NRC to JCPL 11/05/80
XV-6	X	NRC to JCPL 11/16/79	XVII	G	NRC to JCPL 11/16/79
XV-7	0				
XV-8	0				
XV-9	0				

PALISADES

FACILITY INFORMATION

FACILITY: PALISADES

LICENSEE: CONSUMERS POWER

REGION/LOCATION: 5 MILES SOUTH OF SOUTH HAVEN, MI.

DOCKET NO.: 05000255

POWER CAPACITY: 2530(THERMAL) 0805(ELECTRICAL)

OL NUMBER: DPR-20

N.S.S.S.: C-E

A/E FIRM: BECH.

KEY PERSONNEL

SYSTEMATIC EVALUATION PROGRAM BRANCH CHIEF: W. RUSSELL

OPERATING REACTORS BRANCH CHIEF: D. CRUTCHFIELD

OPERATING REACTORS PROJECT MANAGER: T. WAMBACH

KEY FOR STATUS CODES

G - GENERIC

X - DELETED

0 - TOPIC NOT
STARTED

1 - QUESTIONS RECEIVED
FROM REVIEW BRANCH

2 - QUESTIONS SENT TO
UTILITY

3 - QUESTION RESPONSE
RECEIVED BY NRC

4 - DRAFT SE RECEIVED
FROM REVIEW BRANCH

5 - DRAFT SE SENT TO
UTILITY

6 - SE RESPONSE RECEIVED
BY NRC

7 - TOPIC COMPLETE

TOPIC NO.	STATUS	REMARKS
II-1 A.	7	CPCo to NRC 12/28/79
II-1 B.	7	CPCo to NRC 12/28/79
II-1 C.	7	CPCo to NRC 12/28/79
II-2 A.	5	NRC to CPCo 11/21/80
II-2 B.	G	NRC to CPCo 10/01/80
II-2 C.	6	CPCo to NRC 04/06/79
II-2 D.	G	NRC to CPCo 10/01/80
II-3 A.	4	
II-3 B.	4	
II-3 B. 1.	4	
II-3 C.	4	
II-4	5	NUREG/CR-1582 08/80
II-4 A.	5	NUREG/CR-1582 08/80
II-4 B.	5	NUREG/CR-1582 08/80
II-4 C.	5	NUREG/CR-1582 08/80
II-4 D.	3	
II-4 E.	X	NRC to CPCo 11/16/79
II-4 F.	3	
III-1	7(Elec) 2(Sys)	NRC to CPCo 11/12/80 NRC to CPCo 12/15/80
III-2	3	CPCo to NRC 12/14/79

PALISADES

TOPIC NO.	STATUS	REMARKS	TOPIC NO.	STATUS	REMARKS
III-3 A.	3	CPCo to NRC 12/04/80	III-10 B.	7	NRC to CPCo 12/31/80
III-3 B.	X	NRC to CPCo 12/26/80	III-10 C.	X	NRC to CPCo 11/16/79
III-3 C.	0		III-11	5	NRC to CPCo 01/19/81
III-4 A.	4(AEB) 3(SEB)	CPCo to NRC 12/04/80	III-12	3	CPCo to NRC 10/07/80
III-4 B.	3(MTEB) 3(SEB)	CPCo to NRC 12/04/80 CPCo to NRC 12/04/80	IV-1 A.	7	CPCo to NRC 02/08/79
III-4 C.	2(RSB) 3(SEB)	NRC to CPCo 12/26/80 CPCo to NRC 12/04/80	IV-2	2	
III-4 D.	5	NRC to CPCo 01/13/81	IV-3	X	NRC to CPCo 11/16/79
III-5 A.	2	NRC to CPCo 01/11/79	V-1	G	NRC to CPCo 11/16/79
III-5 B.	1		V-2	X	NRC to CPCo 11/16/79
III-6	5	NRC to CPCo 01/19/81	V-3	G	NRC to CPCo 11/16/79
III-7 A.	G	NRC to CPCo 11/16/79	V-4	G	NRC to CPCo 11/16/79
III-7 B.	3	CPCo to NRC 12/14/79	V-5	4	
III-7 C.	3	CPCo to NRC 12/14/79	V-6	7	NRC to CPCo 03/05/80
III-7 D.	3	CPCo to NRC 12/14/79	V-7	G	NRC to CPCo 11/16/79
III-8 A.	G	NRC to CPCo 11/16/79	V-8	G	NRC to CPCo 11/16/79
III-8 B.	X		V-9	X	NRC to CPCo 11/16/79
III-8 C.	7	CPCo to NRC 12/28/79	V-10 A.	7	NRC to CPCo 04/21/79
III-8 D.	G	NRC to CPCo 11/16/79	V-10 B.	7(Sys)	NRC to CPCo 11/05/80
III-9	G	NRC to CPCo 11/16/79	V-11 A.	7(Sys) 7(Elec)	NRC to CPCo 11/05/80 NRC to CPCo 09/15/80
III-10 A.	7	NRC to CPCo 12/31/80	V-11 B.	7(Sys) 7(Elec)	NRC to CPCo 11/05/80 NRC to CPCo 09/15/80

PALISADES

TOPIC NO.	STATUS	REMARKS		TOPIC NO.	STATUS	REMARKS	
V-12 A.	X	NRC to CPCo	11/16/79	VI-7 D.	G	NRC to CPCo	11/16/79
V-13	G	NRC to CPCo	11/16/79	VI-7 E.	G	NRC to CPCo	11/16/79
VI-1	4			VI-7 F.	7	NRC to CPCo	12/31/80
VI-2 A.	X	NRC to CPCo	11/16/79	VI-8	G		
VI-2 B.	G	NRC to CPCo	11/16/79	VI-9	X	NRC to CPCo	11/16/79
VI-2 C.	X	NRC to CPCo	11/16/79	VI-10 A.	7	NRC to CPCo	11/12/80
VI-2 D.	3	CPCo to NRC	04/02/80	VI-10 B.	X	NRC to CPCo	11/16/79
VI-3	2	CPCo to NRC	04/02/80	VII-1 A.	7	NRC to CPCo	11/12/80
VI-4	4(EI&C) 3(MECH)	CPCo to NRC	10/16/80	VII-1 B.	G	NRC to CPCo	11/16/79
VI-5	2	NRC to CPCo	04/30/79	VII-2	7	NRC to CPCo	11/12/80
VI-6	G	NRC to CPCo	11/16/79	VII-3	7(Sys) 5(Elec)	NRC to CPCo NRC to CPCo	11/05/80 01/24/81
VI-7 A. 1.	X	NRC to CPCo	11/16/79	VII-4	G	NRC to CPCo	11/16/79
VI-7 A. 2.	X	NRC to CPCo	11/16/79	VII-5	G	NRC to CPCo	11/16/79
VI-7 A. 3.	7	NRC to CPCo	11/12/80	VII-6	G	NRC to CPCo	11/16/79
VI-7 A. 4.	X	NRC to CPCo	11/16/79	VII-7	X	NRC to CPCo	11/16/79
VI-7 B.	7(Elec) 0(Sys)	NRC to CPCo	11/12/80	VIII-1 A.	G	NRC to CPCo	11/16/79
VI-7 C.	7	Amendment 21 to DPR-20		VIII-2	7	NRC to CPCo	09/15/80
VI-7 C. 1.	5	NRC to CPCo	11/18/80	VIII-3 A.	7	NRC to CPCo	01/28/81
VI-7 C. 2.	7	Amendment 21 to DPR-20		VIII-3 B.	7	NRC to CPCo	12/31/80
VI-7 C. 3.	X	CPCo to NRC	12/12/79	VIII-4	7	NRC to CPCo	12/31/80

PALISADES

TOPIC NO.	STATUS	REMARKS	TOPIC NO.	STATUS	REMARKS
IX-1	2	NRC to CPCo 01/29/81	XV-10	4	
IX-2	G	NRC to CPCo 11/16/79	XV-11	X	NRC to CPCo 10/01/80
IX-3	3	CPCo to NRC 12/27/79	XV-12	7(Doses) 4(Syst)	NRC to CPCo 01/29/80
IX-4	2	NRC to CPCo 12/26/80	XV-13	X	NRC to CPCo 11/16/79
IX-5	2	NRC to CPCo 01/29/81	XV-14	4	
IX-6	G	NRC to CPCo 11/16/79	XV-15	4	
X	0		XV-16	7	NRC to CPCo 12/31/80
XI-1	G	NRC to CPCo 11/16/79	XV-17	7(Doses) 4(Syst)	NRC to CPCo 01/29/80
XI-2	G	NRC to CPCo 11/16/79	XV-18	X	NRC to CPCo 10/01/80
XIII-1	G	NRC to CPCo 11/16/79	XV-19	7(Doses) 4(Syst)	NRC to CPCo 11/21/80
XIII-2	G	NRC to CPCo 11/16/79	XV-20	7	NRC to CPCo 11/21/80
XV-1	4		XV-21	G	NRC to CPCo 11/16/79
XV-2	7(Doses) 4	NRC to CPCo 01/29/80	XV-22	G	NRC to CPCo 11/16/79
XV-3	4		XV-23	G	NRC to CPCo 11/16/79
XV-4	4		XV-24	G	NRC to CPCo 11/16/79
XV-5	4		XVI	X	NRC to CPCo 11/05/80
XV-6	4		XVII	G	NRC to CPCo 11/16/79
XV-7	4				
XV-8	4				
XV-9	4				

SAN ONOFRE

FACILITY INFORMATION

FACILITY: SAN ONOFRE 1

LICENSEE: SOUTHERN CALIFORNIA EDISON

REGION/LOCATION: 5 MILES SOUTH OF SAN CLEMENTE, CA.

DOCKET NO.: 05000206

POWER CAPACITY: 1347(THERMAL) 0430(ELECTRICAL)

OL NUMBER: DPH-13

N.S.S.S.: WEST.

A/E FIRM: BECH.

KEY PERSONNEL

SYSTEMATIC EVALUATION PROGRAM BRANCH CHIEF: W. RUSSELL

OPERATING REACTORS BRANCH CHIEF: D. L. HUTCHFIELD

OPERATING REACTORS PROJECT MANAGER: S. NOWICKI

KEY FOR STATUS CODES

G - GENERIC

X - DELETED

0 - TOPIC NOT
STARTED

1 - QUESTIONS RECEIVED
FROM REVIEW BRANCH

2 - QUESTIONS SENT TO
UTILITY

3 - QUESTION RESPONSE
RECEIVED BY NRC

4 - DRAFT SE RECEIVED
FROM REVIEW BRANCH

5 - DRAFT SE SENT TO
UTILITY

6 - SE RESPONSE RECEIVED
BY NRC

7 - TOPIC COMPLETE

TOPIC NO.	STATUS	REMARKS
II-1 A.	7	NRC to SCE 11/07/79
II-1 B.	7	NRC to SCE 11/07/79
II-1 C.	3	SCE to NRC 05/07/79
II-2 A.	6	SCE to NRC 01/26/81
II-2 B.	G	NRC to SCE 10/01/80
II-2 C.	6	SCE to NRC 04/23/79
II-2 D.	G	NRC to SCE 10/01/80
II-3 A.	3	Site Visit 07/18/78
II-3 B.	3	Site Visit 07/18/78
II-3 B. 1	3	Site Visit 07/18/78
II-3 C.	3	Site Visit 07/18/78
II-4	5	NUREG-0712 12/80
II-4 A.	5	NUREG-0712 12/80
II-4 B.	5	NUREG-0712 12/80
II-4 C.	5	NUREG-0712 12/80
II-4 D.	0	
II-4 E.	X	NRC to SCE 11/16/79
II-4 F.	0	
III-1	3(Sys) 0(ICS)	SCE to NRC 08/29/79
III-2	3	SCE to NRC 08/08/80

SAN ONOFRE

TOPIC NO.	STATUS	REMARKS		TOPIC NO.	STATUS	REMARKS	
III-3 A.	3	SCE to NRC	09/08/80	III-10 B.	7	NRC to SCE	11/08/79
III-3 B.	X	NRC to SCE	11/16/79	III-10 C.	X	NRC to SCE	11/16/79
III-3 C.	0			III-11	3		
III-4 A.	3	SCE to NRC	08/14/79	III-12	3	SCE to NRC	10/31/80
III-4 B.	6	SCE to NRC	03/05/79	IV-1 A.	7	NRC to SCE	07/19/79
III-4 C.	0(RSB) 0(SEB)			IV-2	2	NRC to SCE	12/15/80
III-4 D.	0			IV-3	X	NRC to SCE	11/16/79
III-5 A.	1			V-1	G	NRC to SCE	11/16/79
III-5 B.	2	NRC to SCE	01/04/80	V-2	X	NRC to SCE	11/16/79
III-6	3			V-3	G	NRC to SCE	11/16/79
III-7 A.	X	NRC to SCE	11/16/79	V-4	G	NRC to SCE	11/16/79
III-7 B.	3	SCE to NRC	09/08/80	V-5	4		
III-7 C.	X	NRC to SCE	11/16/79	V-6	7	NRC to SCE	03/05/80
III-7 D.	0			V-7	G	NRC to SCE	11/16/79
III-8 A.	G	NRC to SCE	11/16/79	V-8	G	NRC to SCE	11/16/79
III-8 B.	X	NRC to SCE	10/01/80	V-9	X	NRC to SCE	11/16/79
III-8 C.	7	NRC to SCE	01/29/80	V-10 A.	7	NRC to SCE	01/07/81
III-8 D.	G	NRC to SCE	11/16/79	V-10 B.	6(Sys)	SCE to NRC	07/31/80
III-9	G	NRC to SCE	11/16/79	V-11 A.	5(Elec) 6(Sys)	NRC to SCE SCE to NRC	01/07/81 07/31/80
III-10 A.	7	SCE to NRC	09/22/80	V-11 B.	6(Sys) 0(Elec)	SCE to NRC	07/31/80

SAN ONOFRE

TOPIC NO.	STATUS	REMARKS		TOPIC NO.	STATUS	REMARKS	
V-12 A.	X	NRC to SCE	11/16/79	VI-7 D.	G	NRC to SCE	11/16/79
V-13	G	NRC to SCE	11/16/79	VI-7 E.	G	NRC to SCE	11/16/79
VI-1	3	SCE to NRC	08/03/79	VI-7 F.	X	NRC to SCE	11/16/79
VI-2 A.	X	NRC to SCE	11/16/79	VI-8	G	NRC to SCE	10/01/80
VI-2 B.	G	NRC to SCE	11/16/79	VI-9	X	NRC to SCE	11/16/79
VI-2 C.	X	NRC to SCE	11/16/79	VI-10 A.	0		
VI-2 D.	2			VI-10 B.	7(Sys) 7(Elec)	NRC to SCE NRC to SCE	11/15/79 11/15/79
VI-3	2			VII-1 A.	0		
VI-4	0(Mech) 7(Elec)			VII-1 B.	G	NRC to SCE	11/16/79
VI-5	1			VII-2	0		
VI-6	G	NRC to SCE	11/16/79	VII-3	6(Sys) 1(Elec)	SCE to NRC	07/31/80
VI-7 A. 1.	7	NRC to SCE	04/01/77	VII-4	G	NRC to SCE	11/16/79
VI-7 A. 2.	X	NRC to SCE	11/16/79	VII-5	G	NRC to SCE	11/16/79
VI-7 A. 3.	0			VII-6	G	NRC to SCE	11/16/79
VI-7 A. 4.	X	NRC to SCE	11/16/79	VII-7	X	NRC to SCE	11/16/79
VI-7 B.	3(Sys) 2(Elec)	NRC to SCE	09/16/80	VIII-1 A.	G	NRC to SCE	11/16/79
VI-7 C.	0			VIII-2	4		
VI-7 C. 1.	7	SCE to NRC	09/22/80	VIII-3 A.	7	NRC to SCE	11/07/79
VI-7 C. 2.	0			VIII-3 B.	7	NRC to SCE	01/28/81
VI-7 C. 3.	X	NRC to SCE	11/16/79	VIII-4	4		

SAN ONOFRE

TOPIC NO.	STATUS	REMARKS		TOPIC NO.	STATUS	REMARKS
IX-1	3	SCE to NRC	10/05/79	XV-10	0	
IX-2	G	NRC to SCE	11/16/79	XV-11	X	NRC to SCE 10/01/80
IX-3	2			XV-12	0(Sys) 7(Doses)	NRC to SCE 01/29/80
IX-4	0			XV-13	X	NRC to SCE 11/16/79
IX-5	0			XV-14	0	
IX-6	G	NRC to SCE	11/16/79	XV-15	0	
X	0			XV-16	1	
XI-1	G	NRC to SCE	11/16/79	XV-17	0(Sys) 7(Doses)	NRC to SCE 01/29/80
XI-2	G	NRC to SCE	11/16/79	XV-18	X	NRC to SCE 10/01/80
XIII-1	G	NRC to SCE	11/16/79	XV-19	0(Sys) 7(Doses)	NRC to SCE 01/29/80
XIII-2	G	NRC to SCE	11/16/79	XV-20	7	NRC to SCE 03/28/80
XV-1	0			XV-21	G	NRC to SCE 11/16/79
XV-2	0(Sys) 7(Doses)	NRC to SCE	01/29/80	XV-22	G	NRC to SCE 11/16/79
XV-3	0			XV-23	X	NRC to SCE 11/16/79
XV-4	0			XV-24	G	NRC to SCE 11/16/79
XV-5	0			XVI	X	NRC to SCE 11/05/80
XV-6	0			XVII	G	NRC to SCE 11/16/79
XV-7	0					
XV-8	0					
XV-9	0					

YANKEE ROWE

FACILITY INFORMATION

FACILITY: YANKEE ROWE 1

LICENSEE: YANKEE ATOMIC ELECTRIC

REGION/LOCATION: 25 MILES NORTH EAST OF PITTSFIELD, MASS.

DOCKET NO.: 05000029

POWER CAPACITY: 600(THERMAL) 175(ELECTRICAL)

OL NUMBER: DPR-3

N.S.S.S.: WEST.

A/E FIRM: S&W

KEY PERSONNEL

SYSTEMATIC EVALUATION PROGRAM BRANCH CHIEF: W. RUSSELL

OPERATING REACTORS BRANCH CHIEF: D. CRUTCHFIELD

OPERATING REACTORS PROJECT MANAGER: R. CARUSO

KEY FOR STATUS CODES

G - GENERIC

X - DELETED

0 - TOPIC NOT
STARTED

1 - QUESTIONS RECEIVED
FROM REVIEW BRANCH

2 - QUESTIONS SENT TO
UTILITY

3 - QUESTION RESPONSE
RECEIVED BY NRC

4 - DRAFT SE RECEIVED
FROM REVIEW BRANCH

5 - DRAFT SE SENT TO
UTILITY

6 - SE RESPONSE RECEIVED
BY NRC

7 - TOPIC COMPLETE

TOPIC NO. STATUS REMARKS

II-1 A.	0		
II-1 B.	0		
II-1 C.	0		
II-2 A.	5	NRC to YAEC	12/17/80
II-2 B.	G	NRC to YAEC	10/01/80
II-2 C.	0		
II-2 D.	G	NRC to YAEC	10/01/80
II-3 A.	4		
II-3 B.	4		
II-3 B. 1.	4		
II-3 C.	3	Site Visit	
II-4	5	NUREG/CR-1582	08/80
II-4 A.	5	NUREG/CR-1582	08/80
II-4 B.	5	NUREG/CR-1582	08/80
II-4 C.	5	NUREG/CR-1582	08/80
II-4 D.	3	Site Visit	
II-4 E.	3	Site Visit	
II-4 F.	3	Site Visit	
III-1	0(EICS) 3(Sys)	YAEC to NRC	01/31/79
III-2	3	YAEC to NRC	09/06/79

YANKEE ROWE

TOPIC NO.	STATUS	REMARKS	TOPIC NO.	STATUS	REMARKS
III-3 A.	1	YAEC to NRC 09/06/79	III-10 B.	X	NRC to YAEC 11/16/79
III-3 B.	X	NRC to YAEC 12/26/80	III-10 C.	X	NRC to YAEC 11/16/79
III-3 C.	0		III-11	3	
III-4 A.	0(AEB) 0(SEB)		III-12	3	YAEC to NRC 10/31/80
III-4 B.	0(MTEB) 0(SEB)		IV-1 A.	7	NRC to YAEC 04/18/79
III-4 C.	0(RSB) 0(SEB)		IV-2	2	NRC to YAEC 12/15/80
III-4 D.	0		IV-3	X	NRC to YAEC 11/16/79
III-5 A.	2	NRC to YAEC 01/04/80	V-1	G	NRC to YAEC 11/16/79
III-5 B.	1		V-2	X	NRC to YAEC 11/16/79
III-6	2	NRC to YAEC 08/04/80	V-3	G	NRC to YAEC 11/16/79
III-7 A.	X	NRC to YAEC 11/16/79	V-4	G	NRC to YAEC 11/16/79
III-7 B.	3	YAEC to NRC 09/06/79	V-5	5	NRC to YAEC 01/24/80
III-7 C.	X	NRC to YAEC 11/16/79	V-6	7	NRC to YAEC 03/05/80
III-7 D.	3	NRC to YAEC 11/16/79	V-7	G	NRC to YAEC 11/16/79
III-8 A.	G	NRC to YAEC 11/16/79	V-8	G	NRC to YAEC 11/16/79
III-8 B.	X	NRC to YAEC 10/01/80	V-9	X	NRC to YAEC 11/16/79
III-8 C.	7	NRC to YAEC 11/15/79	V-10 A.	7	NRC to YAEC 11/05/79
III-8 D.	G	NRC to YAEC 11/16/79	V-10 B.	6(Sys)	YAEC to NRC 04/13/79
III-9	G	NRC to YAEC 11/16/79	V-11 A.	7	NRC to YAEC 12/08/80
III-10 A.	7	NRC to YAEC 12/08/80	V-11 B.	6(Sys) 0(Elec)	YAEC to NRC 04/13/79

YANKEE ROWE

TOPIC NO.	STATUS	REMARKS		TOPIC NO.	STATUS	REMARKS	
V-12 A.	X	NRC to YAEC	11/16/79	VI-7 D.	G	NRC to YAEC	11/16/79
V-13	G	NRC to YAEC	11/16/79	VI-7 E.	G	NRC to YAEC	11/16/79
VI-1	3	YAEC to NRC	06/26/79	VI-7 F.	7	NRC to YAEC	12/08/80
VI-2 A.	X	NRC to YAEC	11/16/79	VI-8	G	NRC to YAEC	10/01/80
VI-2 B.	G	NRC to YAEC	11/16/79	VI-9	X	NRC to YAEC	11/16/79
VI-2 C.	X	NRC to YAEC	11/16/79	VI-10 A.	0		
VI-2 D.	2			VI-10 B.	X	NRC to YAEC	11/16/79
VI-3	2			VII-1 A.	0		
VI-4	0(Sys) 7(Elec)	NRC to YAEC	12/08/80	VII-1 B.	G	NRC to YAEC	11/16/79
VI-5	2	NRC to YAEC	05/01/79	VII-2	0		
VI-6	G	NRC to YAEC	11/16/79	VII-3	6(Sys) 0(Elec)	YAEC to NRC	04/13/79
VI-7 A. 1.	7	NRC to YAEC	01/10/77	VII-4	G	NRC to YAEC	04/16/79
VI-7 A. 2.	X	NRC to YAEC	11/16/79	VII-5	G	NRC to YAEC	04/16/79
VI-7 A. 3.	0			VII-6	G	NRC to YAEC	04/16/79
VI-7 A. 4.	X	NRC to YAEC	11/16/79	VII-7	X	NRC to YAEC	11/16/79
VI-7 B.	0			VIII-1 A.	G	NRC to YAEC	04/16/79
VI-7 C.	0			VIII-2	7	NRC to YAEC	12/08/80
VI-7 C. 1.	7	NRC to YAEC	12/08/80	VIII-3 A.	7	NRC to YAEC	11/07/79
VI-7 C. 2.	0			VIII-3 B.	5	NRC to YAEC	12/15/80
VI-7 C. 3.	5	NRC to YAEC	07/24/80	VIII-4	0		

YANKEE ROWE

TOPIC NO.	STATUS	REMARKS	TOPIC NO.	STATUS	REMARKS
IX-1	0		XV-10	0	
IX-2	G	NRC to YAEC 11/16/79	XV-11	X	NRC to YAEC 10/01/80
IX-3	2		XV-12	0(Sys) 0(Doses)	
IX-4	0		XV-13	X	NRC to YAEC 11/16/79
IX-5	0		XV-14	0	
IX-6	G	NRC to YAEC 04/16/79	XV-15	0	
X	0		XV-16	0	
XI-1	G	NRC to YAEC 04/16/79	XV-17	0(Sys) 0(Doses)	
XI-2	G	NRC to YAEC 11/16/79	XV-18	X	NRC to YAEC 10/01/80
XIII-1	G	NRC to YAEC 11/16/79	XV-19	0(Sys) 0(Doses)	
XIII-2	G	NRC to YAEC 11/16/79	XV-20	5	NRC to YAEC 03/07/80
XV-1	0		XV-21	G	NRC to YAEC 11/16/79
XV-2	0(Sys) 0(Doses)		XV-22	G	NRC to YAEC 11/16/79
XV-3	0		XV-23	G	NRC to YAEC 11/16/79
XV-4	0		XV-24	G	NRC to YAEC 11/16/79
XV-5	0		XVI	X	NRC to YAEC 11/05/80
XV-6	0		XVII	G	NRC to YAEC 11/16/79
XV-7	0				
XV-8	0				
XV-9	0				

NRC FORM 33F (7-77)		U.S. NUCLEAR REGULATORY COMMISSION BIBLIOGRAPHIC DATA SHEET		1. REPORT NUMBER (Assigned by DDC) NUREG-0485, Vol. 3, No. 3	
4. TITLE AND SUBTITLE (Add Volume No., if appropriate) Systematic Evaluation Program Status Summary Report				2. (Leave blank)	
7. AUTHOR(S)				3. RECIPIENT'S ACCESSION NO.	
9. PERFORMING ORGANIZATION NAME AND MAILING ADDRESS (Include Zip Code) Office of Management and Program Analysis Office of Nuclear Reactor Regulation U.S. Nuclear Regulatory Commission Washington, D.C. 20555				5. DATE REPORT COMPLETED MONTH YEAR February 1981	
12. SPONSORING ORGANIZATION NAME AND MAILING ADDRESS (Include Zip Code) Office of Management and Program Analysis Office of Nuclear Reactor Regulation U.S. Nuclear Regulatory Commission Washington, D.C. 20555				DATE REPORT ISSUED MONTH YEAR February 1981	
13. TYPE OF REPORT				6. (Leave blank)	
15. SUPPLEMENTARY NOTES				8. (Leave blank)	
16. ABSTRACT (200 words or less) The Systematic Evaluation Program is intended to examine many safety related aspects of eleven of the older light water reactors. This document provides the existing status of the review process including individual topic and overall completion status.				10. PROJECT/TASK/WORK UNIT NO.	
17. KEY WORDS AND DOCUMENT ANALYSIS				11. CONTRACT NO.	
17b. IDENTIFIERS/OPEN-ENDED TERMS				14. (Leave blank)	
18. AVAILABILITY STATEMENT Unlimited				19. SECURITY CLASS (This report) Unclassified	
20. SECURITY CLASS (This page) Unclassified				21. NO. OF PAGES	
22. PRICE S				23. PRICE	