

TIC



UNITED STATES
NUCLEAR REGULATORY COMMISSION
REGION I
631 PARK AVENUE
KING OF PRUSSIA, PENNSYLVANIA 19406

September 12, 1980

Docket No. 50-309

Maine Yankee Atomic Power Company
ATTN: Mr. Robert H. Groce
Senior Engineer - Licensing
25 Research Drive
Westborough, Massachusetts 01581

Gentlemen:

The enclosed IE Information Notice No. 80-32, "Clarification of Certain Requirements for Exclusive-use Shipments of Radioactive Materials," is forwarded to you for information. No written response is required. If you desire additional information regarding this matter, please contact this office.

Sincerely,

Boyce H. Grier
Boyce H. Grier
Director

Enclosures:

- 1. IE Information Notice No. 80-32
- 2. List of Recently Issued IE Information Notices

CONTACT: H. W. Crocker
(215-337-5217)

cc w/encls:
E. Wood, Plant Superintendent
E. W. Thurlov, President

UNITED STATES
NUCLEAR REGULATORY COMMISSION
OFFICE OF INSPECTION AND ENFORCEMENT
WASHINGTON, D. C. 20555

August 29, 1980

IE Information Notice No. 80-32: CLARIFICATION OF CERTAIN REQUIREMENTS FOR
EXCLUSIVE-USE SHIPMENTS OF RADIOACTIVE
MATERIALS

Background

In mid-1979 the NRC initiated an enhanced program for inspection of shipments of radioactive materials, including, in particular, low level wastes. In conjunction with this effort, civil penalties have been assessed for violation of associated regulatory requirements. IE Bulletins 79-19 and 79-20, "Packaging of Low Level Radioactive Waste for Transport and Burial," issued August 8, 1979 and IE Information Notice 79-21, "Transportation and Commercial Burial of Radioactive Material," issued September 7, 1979, provide background in this regard.

During the past year, this augmented inspection/enforcement program has prompted a number of questions on the proper application of certain regulatory requirements. These questions involve mainly the problems and deficiencies associated with exclusive use highway shipments of low-level radioactive wastes. The purpose of this Notice is to discuss the questions and clarify the applicability of certain requirements.

Application of 49 CFR 173.393(i) and (j)

Numerous questions involve the application of the limits of radiation levels of exclusive use shipments as prescribed in 49 CFR 173.393(j). As stated therein, the regulation reads

(j) Packages for which the radiation dose rate exceeds the limits specified in paragraph (i) of this section, but does not exceed at any time during transportation any of the limits specified in paragraphs (j)(1) through (4) of this section may be transported in a transport vehicle which has been consigned as exclusive use (except aircraft). Specific instructions for maintenance of the exclusive use (sole use) shipment controls must be provided by the shipper to the carrier. Such instructions must be included with the shipping paper information:

- (1) 1,000 millirem per
the package (closed
- (2) 200 millirem per ho
the car or vehicle

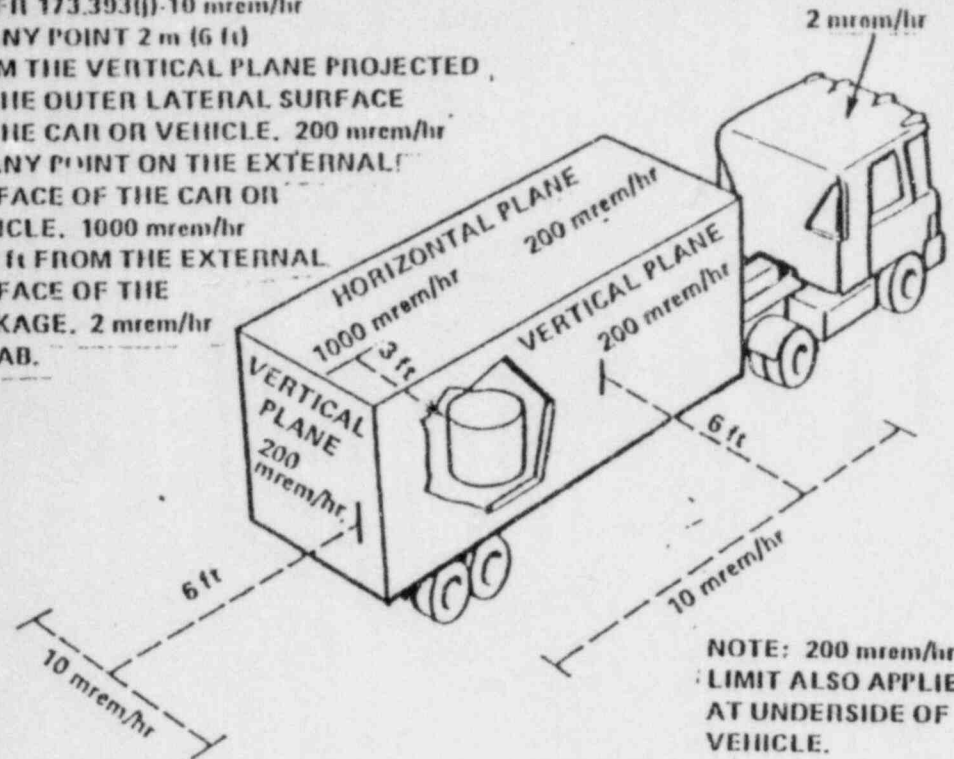
DUPLICATE DOCUMENT

Entire document previously
entered into system under:

ANO 8006190044

No. of pages: 8

49 CFR 173.393(j)-10 mrem/hr
 AT ANY POINT 2 m (6 ft)
 FROM THE VERTICAL PLANE PROJECTED,
 BY THE OUTER LATERAL SURFACE
 OF THE CAR OR VEHICLE. 200 mrem/hr
 AT ANY POINT ON THE EXTERNAL
 SURFACE OF THE CAR OR
 VEHICLE. 1000 mrem/hr
 AT 3 ft FROM THE EXTERNAL
 SURFACE OF THE
 PACKAGE. 2 mrem/hr
 IN CAB.

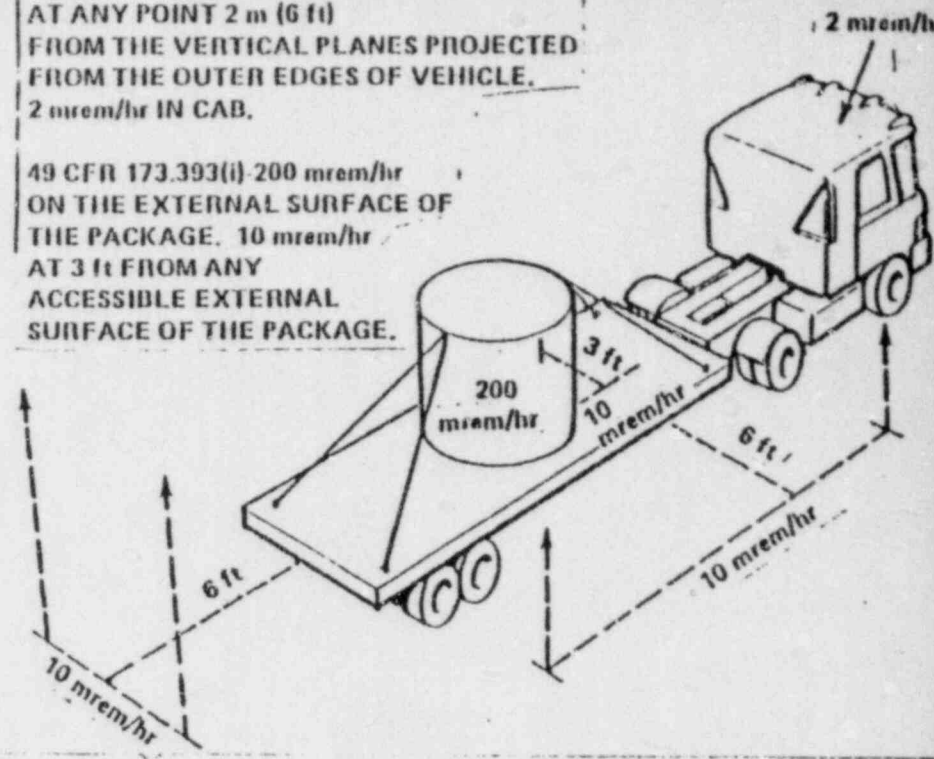


NOTE: 200 mrem/hr
 LIMIT ALSO APPLIES
 AT UNDERSIDE OF
 VEHICLE.

EXCLUSIVE-USE CLOSED TRANSPORT

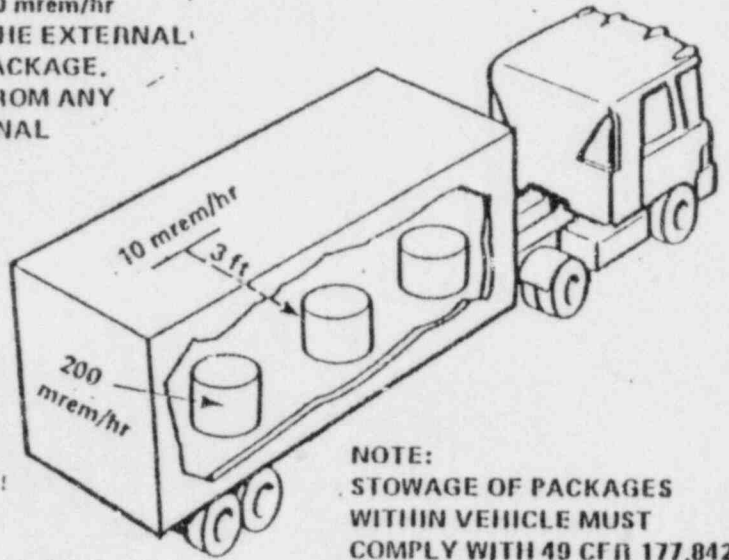
49 CFR 173.393(j)-10 mrem/hr
 AT ANY POINT 2 m (6 ft)
 FROM THE VERTICAL PLANES PROJECTED
 FROM THE OUTER EDGES OF VEHICLE.
 2 mrem/hr IN CAB.

49 CFR 173.393(i)-200 mrem/hr
 ON THE EXTERNAL SURFACE OF
 THE PACKAGE. 10 mrem/hr
 AT 3 ft FROM ANY
 ACCESSIBLE EXTERNAL
 SURFACE OF THE PACKAGE.



EXCLUSIVE-USE OPEN TRANSPORT

49 CFR 173.393(i)-200 mrem/hr
 AT ANY POINT ON THE EXTERNAL
 SURFACE OF THE PACKAGE.
 10 mrem/hr AT 3 ft FROM ANY
 ACCESSIBLE EXTERNAL
 SURFACE OF THE
 PACKAGE.



NOTE:
 TOTAL TI IS NOT
 TO EXCEED 50 PER 1
 49 CFR 177.842(n).

NOTE:
 STOWAGE OF PACKAGES
 WITHIN VEHICLE MUST
 COMPLY WITH 49 CFR 177.842(b).

NON-EXCLUSIVE-USE OPEN OR CLOSED

TRANSPORT

APPENDIX A

IE INFORMATION NOTICE 80-32

**RADIATION
 LIMITS**

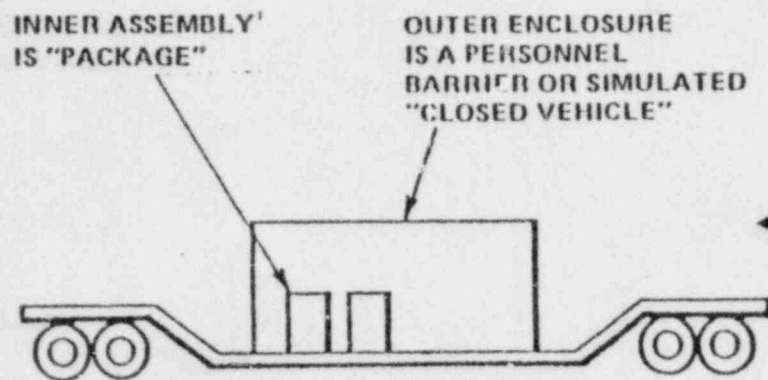
49 CFR 173.393 (i) AND (j)

POOR ORIGINAL

WHAT COMPRISES THE PACKAGE?

49 CFR 171.8 DEFINES PACKAGING SUCH THAT YOU MUST CONSIDER THE "... ASSEMBLY OF ONE OR MORE CONTAINERS AND ANY OTHER COMPONENTS NECESSARY TO ACHIEVE COMPLIANCE WITH THE MINIMUM PACKAGING REQUIREMENTS..."

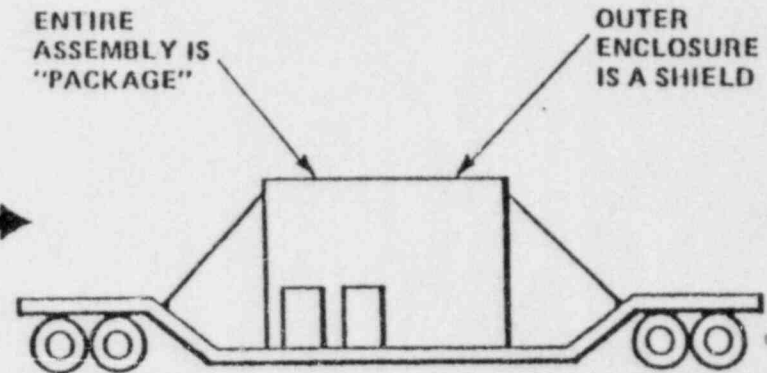
THEREFORE:



INNER ASSEMBLY IS "PACKAGE"

OUTER ENCLOSURE IS A PERSONNEL BARRIER OR SIMULATED "CLOSED VEHICLE"

OR



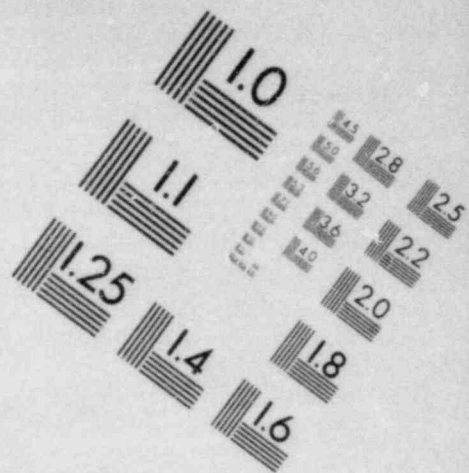
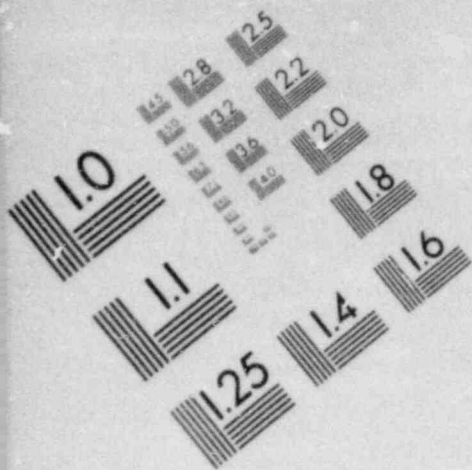
ENTIRE ASSEMBLY IS "PACKAGE"

OUTER ENCLOSURE IS A SHIELD

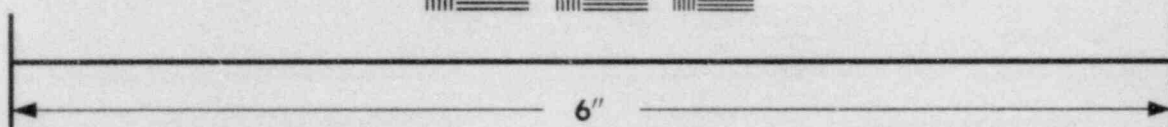
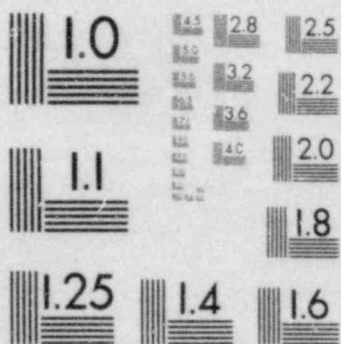
IN THIS SCENARIO, THE INNER PACKAGINGS MAY BE CONSIDERED TO BE THE "PACKAGE", PROVIDED THE OUTER ENCLOSURE IS NOT NECESSARY TO ACHIEVE COMPLIANCE WITH THE RADIATION LEVEL LIMIT OF 173.393(j)(2); I.e., 200 mrem/hr. LEVEL OF RADIATION ON EACH INNER "PACKAGE" MAY NOT EXCEED 1 rem/hr AT 3 ft FROM ITS SURFACE.

IN THIS SCENARIO, THE ENTIRE ASSEMBLY (OUTER SHIELD PLUS INNER PACKAGINGS) MUST BE CONSIDERED AS THE "PACKAGE", SINCE THE OUTER SHIELD IS NECESSARY TO ACHIEVE COMPLIANCE WITH 173.393(j)(2). RADIATION LEVEL AT SURFACE OF "INNER" PACKAGINGS IS NOT LIMITED.

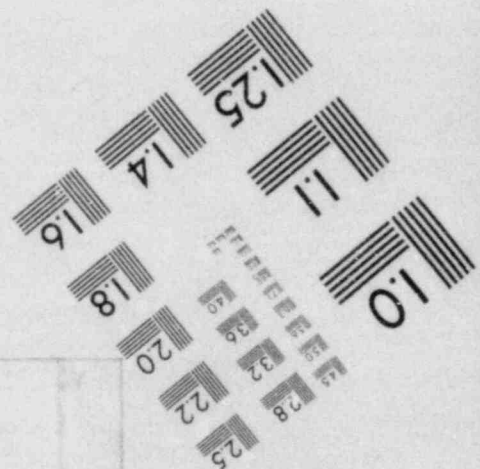
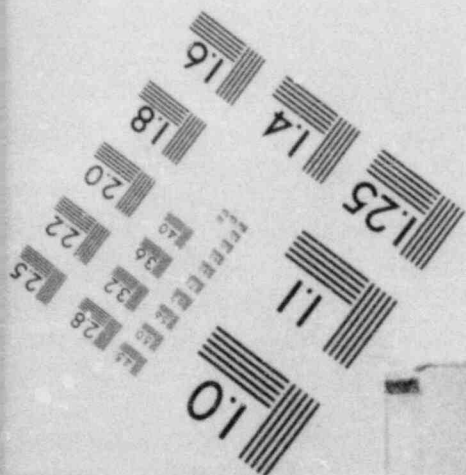
POOR ORIGINAL

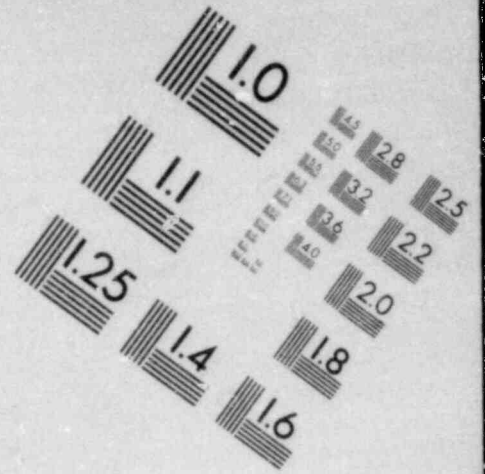
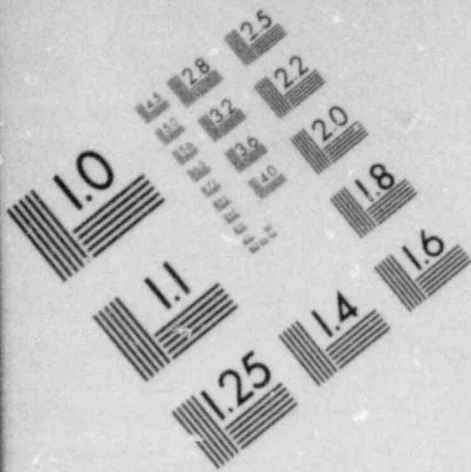


**IMAGE EVALUATION
TEST TARGET (MT-3)**

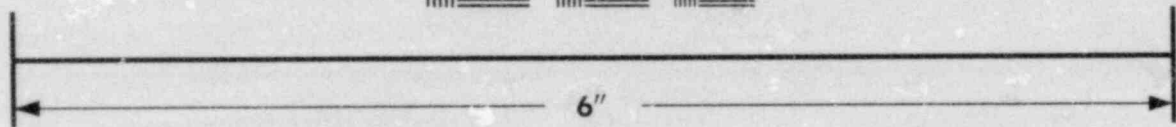
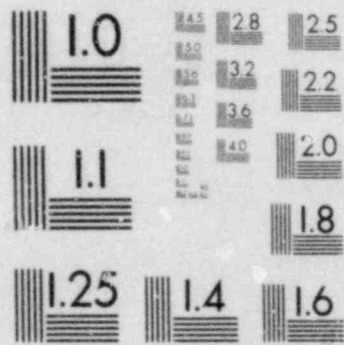


MICROCOPY RESOLUTION TEST CHART

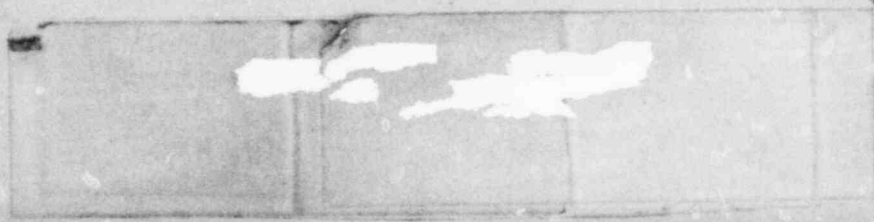
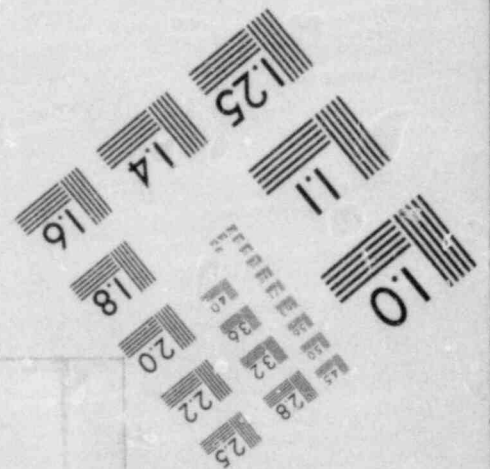
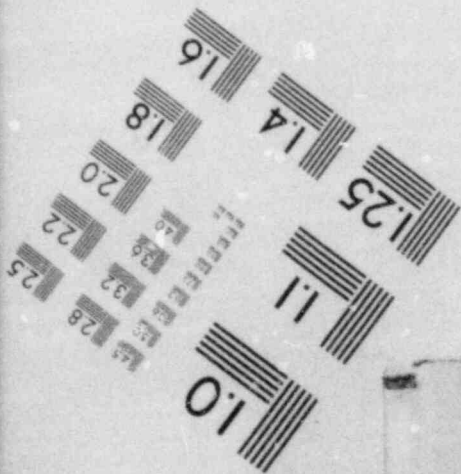




**IMAGE EVALUATION
TEST TARGET (MT-3)**



MICROCOPY RESOLUTION TEST CHART



RECENTLY ISSUED
IE INFORMATION NOTICES

Information Notice No.	Subject	Date Issued	Issued to
80-31	Maloperation of Gould-Brown Boveri 480V-Type K-600S and K-DON 600S Circuit Breakers	8/27/80	All holders of a power reactor OL or CP
80-30	Potential for Unacceptable Interaction Between the Control Rod Drive Scram Function and Non-essential Control Air at Certain BWR Facilities	8/27/80	All holders of a BWR power reactor OL or CP
80-29	Broken Studs on Terry Turbine Steam Inlet Flange	8/7/80	All holders of a power reactor OL or CP
Supplement to 80-06	Notification of Significant Events at Operating Power Reactor Facilities	7/29/80	All holders of a power reactor OL and near term OL applicants
80-28	Prompt Reporting of Required Information To NRC	6/13/80	All applicants for and holders of a power reactor construction permit
80-27	Degradation of Reactor Coolant Pump Studs	6/11/80	All holders of a pressurized water power reactor OL or CP
80-26	Evaluation of Contractor QA Programs	6/10/80	All holders of a Part 50 License
80-25	Transportation of Pyrophoric Uranium	5/30/80	Material Licensees in Priority/Categories II-A, II-D, III-I and IV-DI; Agreement State Licensees in equivalent categories