



Burns and Roe Enterprises, Inc.

800 Kinderkamack Road, Oradell, New Jersey 07649
NJ (201) 265-2000 NY (212) 563-7700 Telex 215058 Cable BURNS ROE ORA

K. Keith Roe
President

November 17, 1989

Document Control Desk
United States Nuclear Regulatory Commission
Washington, D.C. 20555

Gentlemen:

SUBJECT: BURNS AND ROE ENTERPRISES, INC. QA TOPICAL REPORT
(B&ROE-COM4-1-NP-6A)

Subject was accepted in August of 1988. Burns and Roe Company, the business unit which performs nuclear related tasks, is changing its organizational structure as follows:

The former Nuclear Power Division has been divided into three separate divisions each headed by a director and reporting to the Burns and Roe Company Vice President and General Manager. These divisions are: Nuclear Plant Services which provides engineering services for operating nuclear power plants and other nuclear projects exclusive of advanced nuclear plant projects and the Savannah River Nuclear Power Plants; Nuclear Projects which provides engineering services for advanced nuclear power plants; and Savannah River Projects which performs engineering tasks exclusively for Savannah River Projects.

In addition, Burns and Roe Company has initiated a Management Services Division to provide clients with litigation, prudence, and project management services.

Attached is a copy of the previous organization chart and the revised chart for comparison. Please be advised that there has been no change in our Quality Assurance function which reports directly to me.

Should you have any concerns regarding these changes, please contact Mr. Robert C. Baumbach, our Manager of Quality Assurance and Training.

Very truly yours,

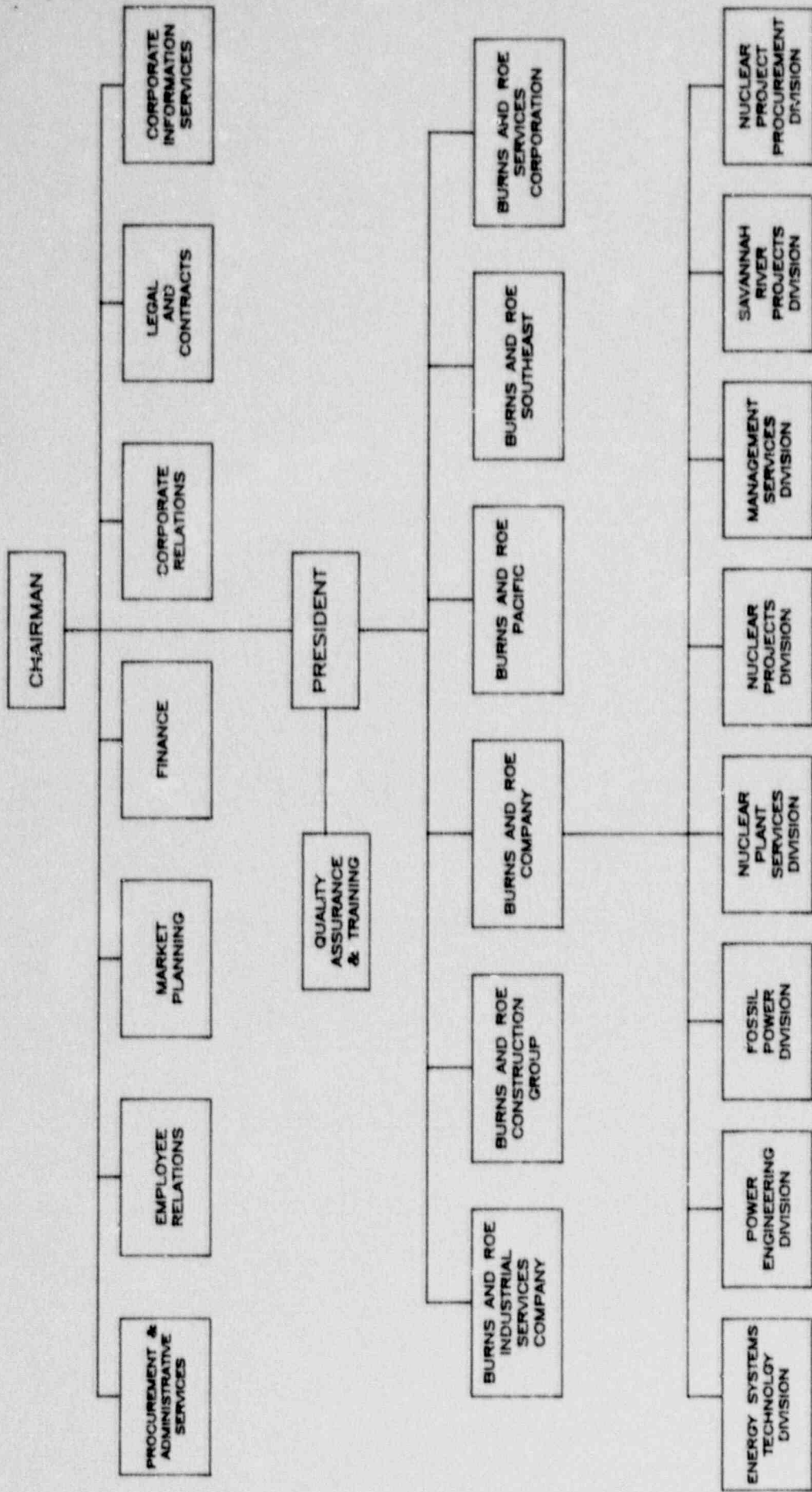
K. Keith Roe

KKR/RCB/jaz
Attach.

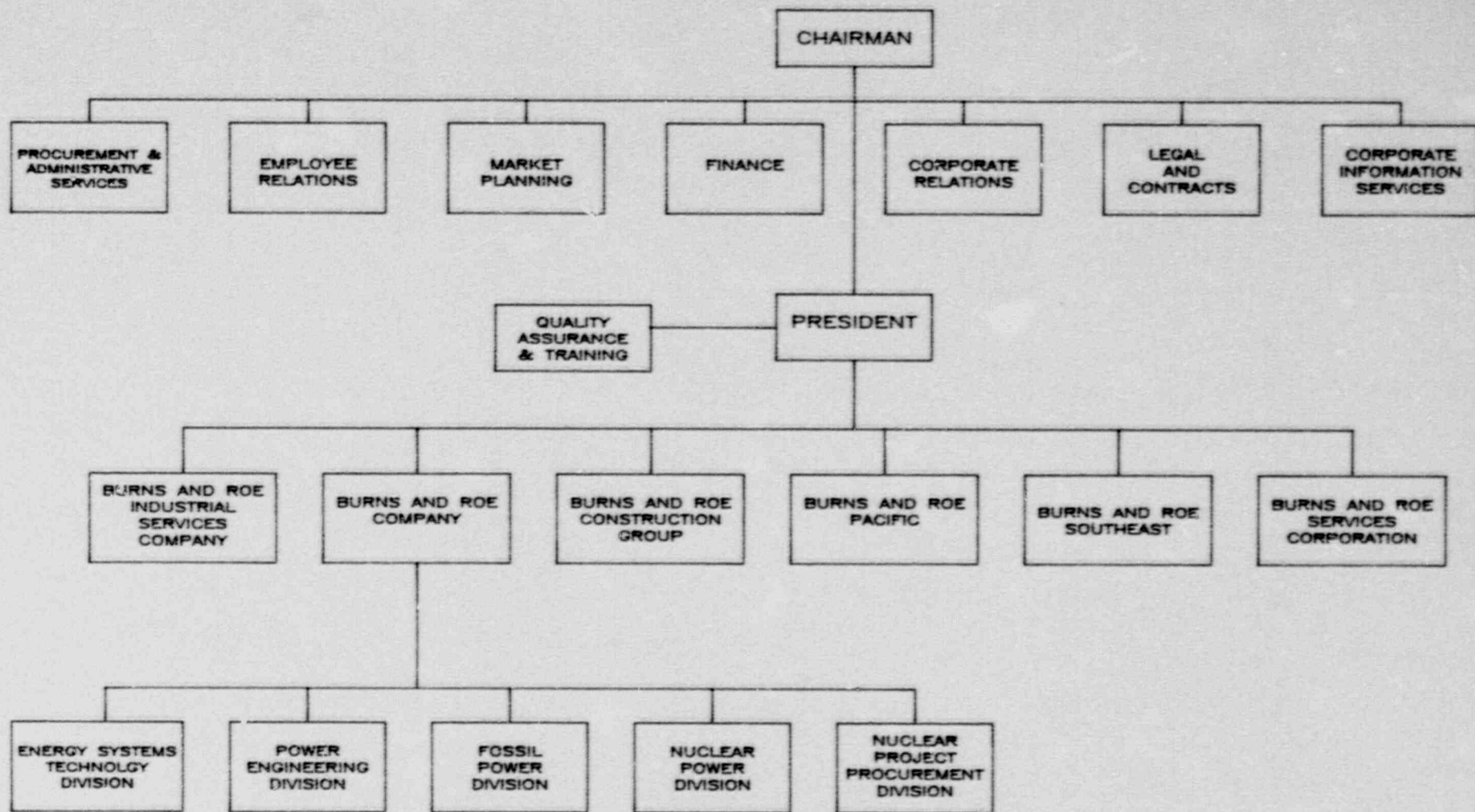
cc: Jack Spraul
USNRC MS-10A19217.47

8912070368 891117
PDR TOPRF EECBURO
C FDC

Toto
1/1



BURNS AND ROE ENTERPRISES, INC.
CORPORATE ORGANIZATION CHART



BURNS AND ROE ENTERPRISES, INC.
CORPORATE ORGANIZATION CHART