

# New Hampshire Yankee

Ted C. Feigenbaum  
Senior Vice President and  
Chief Operating Officer

NYN- 89156

December 1, 1989

United States Nuclear Regulatory Commission  
Washington, DC 20555

Attention: Document Control Desk

References: a) Facility Operating License NPF-67, Docket No. 50-443

- b) PSNH Letter SBN-944, dated February 18, 1986, "Submittal by Applicants of Radiological Emergency Response Plans, State of New Hampshire and Affected New Hampshire Communities," G. S. Thomas to H. R. Denton
- c) PSNH Letter SBN-1186 dated September 8, 1987, "Radiological Emergency Response Plans, State of New Hampshire and Affected New Hampshire Communities: Additional Information," W. B. Derrickson to USNRC
- d) New Hampshire Office of Emergency Management Letter, dated November 30, 1989, G. L. Iverson to R. H. Strome, FEMA, Region I

Subject: Revision 3 to New Hampshire Radiological Emergency Response Plan (NHRERP)

Gentlemen:

By letter dated November 30, 1989, (Reference d), the New Hampshire Office of Emergency Management transmitted Revision 3 to the NHRERP to the Federal Emergency Management Agency. Revision 3 to the NHRERP and its implementing procedures is submitted as Enclosure 1 pursuant to the requirements of 10CFR50.4(b)(5). Nine (9) copies are provided to facilitate your review.

The changes contained in Revision 3, which are denoted by vertical change bars located on the left hand margin, were generated by the following:

- The annual plan review, including training and drill comments from participants and controllers.
- Commitments made during the ASLB proceedings.
- FEMA comments provided as a result of technical assistance visits, plan reviews or the 1988 Graded Exercise.
- Quarterly updates to call lists and telephone numbers.
- Issues identified in the ASLB Partial Initial Decision (PID) on the NHRERP dated December 30, 1988.

New Hampshire Yankee Division of Public Service Company of New Hampshire  
P.O. Box 300 • Seabrook, NH 03874 • Telephone (603) 474-9521

8912060055 891201  
PDR ADOCK 05000443  
PDC

7060053

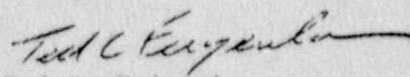
United States Nuclear Regulatory Commission  
Attention: Document Control Desk

December 1, 1989  
Page 2

To assist in your review, Enclosure 2 provides a matrix identifying the changes and the applicable plan/procedure sections in which they appear. Only those changes which are substantive in nature appear on this matrix. Minor editorial changes are not identified.

If you should have any questions regarding the above, please contact Mr. Anthony M. Callendrello, Manager, EP Licensing at (603) 474-9521, extension 2751.

Very truly yours,

  
Ted C. Feigenbaum

Enclosures

cc: Mr. William T. Russell (w/o enclosures)  
Regional Administrator  
United States Nuclear Regulatory Commission  
Region I  
475 Allendale Road  
King of Prussia, PA 19406

Mr. Victor Nerses, Project Manager (w/o enclosures)  
Project Directorate I-3  
Division of Reactor Projects  
United States Nuclear Regulatory Commission  
Washington, DC 20555

Mr. A. C. Cerne (w/o enclosures)  
NRC Senior Resident Inspector  
Seabrook Station  
Seabrook, NH 03847

STATE OF NEW-HAMPSHIRE

December 1, 1989

appeared before me, the above-named Ted C. Feigenbaum,  
and state that he is Senior Vice President & Chief Operating  
New Hampshire Yankee Division of Public Service Company of New  
Hampshire and is duly authorized to execute and file the foregoing  
instrument and on the behalf of New Hampshire Yankee Division of  
Public Service Company and that the statements therein are true to the best  
of my belief.

Beverly E. Silloway  
Beverly E. Silloway, Notary Public  
My Commission Expires: March 5, 1990

STATE OF NEW-HAMPSHIRE

Rockingham, ss.

December 1, 1989

Then personally appeared before me, the above-named Ted C. Feigenbaum, being duly sworn, did state that he is Senior Vice President & Chief Operating Officer of the New Hampshire Yankee Division of Public Service Company of New Hampshire, that he is duly authorized to execute and file the foregoing information in the name and on the behalf of New Hampshire Yankee Division of the Public Service Company and that the statements therein are true to the best of his knowledge and belief.

Beverly E. Silloway  
Beverly E. Silloway, Notary Public  
My Commission Expires: March 6, 1990

December 1, 1989

NYN-89156

REVISION 3 TO NEW HAMPSHIRE RADIOLOGICAL  
EMERGENCY RESPONSE-PLAN (NHFERP)

Duffett, J. C.	PSNH
Gram, G. G.	04-44
Hart, J. B.	01-48
Stroup, P. J.	04-44
Sweeney, R. E.	Bethesda
Temple, W. J.	49-CE
Tsouderos, G.	YAEC
Ropes and Gray	Boston
Executive Offices	01-40
RSD Routing Copy	01-48
Subject File	01-48
File 0001	01-48
RMD	02-84

1989 PLAN/PROCEDURES UPDATE  
RESOLUTION TRACKING (ROADMAP)

AFFECTED SECTION	ISSUE	CORRECTIVE ACTION	SOURCE OF COMMENT
Volume 1, Generic Changes	NA	<p>Changes to Volume 1 include:</p> <ul style="list-style-type: none"> <li>◦ The deletion of old Sections 4.0, 5.0, 6.0 and 7.0 and folding the information therein into the Purpose Section and the main body of the text.</li> <li>◦ Reorganization of text (e.g., grouping organizations into the following order: State, Local, Private and Federal in Sections 1.2 and 1.3 and in Table of Contents).</li> <li>◦ Incorporate old Section 6.3 following Purpose Section.</li> </ul>	Annual Update/Reformat

1989 PLAN/PROCEDURES UPDATE  
RESOLUTION TRACKING (ROADMAP)

AFFECTED SECTION	ISSUE	CORRECTIVE ACTION	SOURCE OF COMMENT
Volume 1, Generic Changes (Continued)		<ul style="list-style-type: none"><li>◦ As a rule, information about Vermont Yankee precedes information on Seabrook Station.</li> <li>◦ Clarifications, corrections, updates, reorganizations and consistency modifications provided as part of the update.</li></ul>	

1989 PLAN/PROCEDURES UPDATE  
RESOLUTION TRACKING (ROADMAP)

AFFECTED SECTION	ISSUE	CORRECTIVE ACTION	SOURCE OF COMMENT
Volume 1, Glossary	NA	The following terms, with the associated definitions, have been added to the glossary:  Drill Access Control Point Exercise ERPA JTIC Precautionary Action Traffic Control Point	Annual Update



1989 PLAN/PROCEDURES UPDATE  
RESOLUTION TRACKING (ROADMAP)

AFFECTED SECTION	ISSUE	CORRECTIVE ACTION	SOURCE OF COMMENT
Volume 1, Section 1.0	NA	Moved information on plume exposure and ingestion pathways to the Introduction/Purpose section.	Annual Update
Volume 1, Section 1.1	NA	Updated section to reflect amended State RSA's.	Annual Update
Volume 1, Section 1.2	NA	Reorganized agencies listed into common groups for clarity; corrected agency titles; clarified responsibilities, added FAA to list of supporting agencies; and expanded text on Sheriff's Department role in managing State Transportation Staging Areas.	Annual Update

1989 PLAN/PROCEDURES UPDATE  
RESOLUTION TRACKING (ROADMAP)

AFFECTED SECTION	ISSUE	CORRECTIVE ACTION	SOURCE OF COMMENT
Volume 1, Section 1.3	Expand Governors responsibilities. Include NHYORO in coordinating role. Clarify EOC activation process and PAR process during fast-breaking accident sequence.	Broadened the responsibilities of the Governor to more accurately reflect his role; updated agency titles and responsibilities and reorganized for clarity; included command and control and recovery/re-entry responsibilities; provided clarification of day care notifications and NHOEM Local Liaison responsibilities; included NHYORO in coordinating role; included plant status and ECL as part of basis for protective action decisions; clarified State EOC activation process and PAR process during fast-breaking accident sequence;	Annual Update, FEMA Technical Assistance Comments

1989 PLAN/PROCEDURES UPDATE  
RESOLUTION TRACKING (ROADMAP)

AFFECTED SECTION	ISSUE	CORRECTIVE ACTION	SOURCE OF COMMENT
Volume 1, Section 1.3 (Continued)		clarified agency and organization roles at reception centers and mass care facilities; and provided clarification on manning of State and Local Transportation Staging Areas.	
Volume 1, Section 1.4	NA	Added provision that federal support would be coordinated between State, Massachusetts and NHYORO.	Annual Update
Volume 1, Section 1.5	NA	Provided consistency with NUREG-0654; Appendix I; and clarified Rockingham County Dispatch Center procedure.	Annual Update

1989 PLAN/PROCEDURES UPDATE  
RESOLUTION TRACKING (ROADMAP)

AFFECTED SECTION	ISSUE	CORRECTIVE ACTION	SOURCE OF COMMENT
Volume 1, Section 2.0	NA	See Volume 1, Generic Changes.	Annual Update
Volume 1, Section 2.1	NA  Sound all New Hampshire sirens if the system is activated for precautionary beach closure (May 15 to September 15).	Provided clarification of initial and public alerting and notifications, and of Seabrook Station siren and tone-alert radio information; and clarified/corrected agency roles and follow-up information forms.  Revised language in the NHRERP to ensure <u>all</u> 94 sirens are activated for precautionary beach closure.	Annual Update  FEMA Technical Review
Volume 1, Section 2.2	NA	Provided clarifications and corrections to communications systems relied on by the NHRERP.	Annual Update

## 1989 PLAN/PROCEDURES UPDATE

## RESOLUTION TRACKING (ROADMAP)

AFFECTED SECTION	ISSUE	CORRECTIVE ACTION	SOURCE OF COMMENT
Vol. 1, Section 2.2 (cont.)	Include initial notification link between the State and EBS Network.	Established initial notification link between NHOEM and EBS Gateway (WOKQ) and State Police Communications and EBS Gateway (WOKQ).	FEMA Technical Review
Volume 1, Section 2.3	NA	Provided clarifications and corrections to more accurately reflect public information materials and rumor control functions.	Annual Update
Volume 1, Section 2.4	NA	Incorporated applicable facility relocations and concept of operations changes for transportation staging areas, reception centers, decontamination centers and/or rumor control facilities.	Annual Update
Volume 1, Section 2.5	NA	See Volume 1, Generic Changes.	Annual Update

1989 PLAN/PROCEDURES UPDATE  
 RESOLUTION TRACKING (ROADMAP)

AFFECTED SECTION	ISSUE	CORRECTIVE ACTION	SOURCE OF COMMENT
Volume 1, Section 2.6	Clarity of precautionary vs. protective actions for schools, beaches, boaters.	Relocated precautionary actions and separated into Schools, Beaches and Boaters; emphasized that primary means of notification for campgrounds is siren system; added plant status as basis for precautionary action for seasonal population; provided emphasis that protective actions are initially based on plant status; used concept of derived response levels; emphasized that access control also applies to sheltering; deleted traffic/access control point maps; deleted flow diagram for seasonal populations; added note to clarify use of flow diagram; and moved shellfish consideration from "water supply" column to "other food" column.	Annual Update, FEMA Technical Assistance Comments

1989 PLAN/PROCEDURES UPDATE  
RESOLUTION TRACKING (ROADMAP)

AFFECTED SECTION	ISSUE	CORRECTIVE ACTION	SOURCE OF COMMENT
Volume 1, Section 2.7	NA	Provided clarifications to exposure control, monitoring, and decontamination activities.	Annual update, DPHS Comments
Volume 1, Section 2.8	NA	See Volume 1, Generic Changes.	Annual Update, DPHS Comments
Volume 1, Section 2.9	NA	See Volume 1, Generic Changes.	Annual Update, DPHS and FEMA Technical Assistance Comments
Volume 1, Section 3.0	NA	See Volume 1, Generic Changes.	Annual Update
Volume 1, Section 3.1	NA	Update provided to discussion of medical and radiation monitoring drills.	Annual Update
	Add quarterly communications drill between SONH and EBS Network.	Added quarterly communication drill between NHOEM and EBS Gateway (WOKQ) and State Police communications and EBS Gateway (WOKQ).	FEMA Technical Review

1989 PLAN/PROCEDURES UPDATE  
RESOLUTION TRACKING (ROADMAP)

AFFECTED SECTION	ISSUE	CORRECTIVE ACTION	SOURCE OF COMMENT
Volume 1, Section 3.2	NA	Provided clarifications, corrected titles, named NHOEM Director as Emergency Planning Coordinator and updated training matrix table.	Annual Update
Volume 1, Section 3.3	NA	Provided inclusion of Host Community Emergency Management Directors in responsibilities section.	Annual Update



1989 PLAN/PROCEDURES UPDATE  
RESOLUTION TRACKING (ROADMAP)

AFFECTED SECTION	ISSUE	CORRECTIVE ACTION	SOURCE OF COMMENT
Volume 5, Generic Changes	NA	Revisions to procedures in Volume 5 include: <ul style="list-style-type: none"> <li>◦ Addition of supporting documents section.</li> <li>◦ General clarifications.</li> <li>◦ Providing references.</li> <li>◦ Ensuring consistencies between procedures.</li> <li>◦ Movement of phone numbers to the appropriate section of the NHRERP Emergency Phone List.</li> <li>◦ Streamlining and consolidation of procedures.</li> <li>◦ Minor reorganizations provided.</li> </ul>	Annual Update/Reformat

1989 PLAN/PROCEDURES UPDATE  
 RESOLUTION TRACKING (ROADMAP)

AFFECTED SECTION	ISSUE	CORRECTIVE ACTION	SOURCE OF COMMENT
Volume 5, Section 1.0	NA	Revised NHCDA to NHOEM and Civil Defense to Emergency Management; incorporated, for purposes of clarification, responsibilities reflected in Volume 1.	Annual Update
Volume 5, Section 2.0	NA	Revised procedure to rely on State Notification Fact Sheet, Form 200A; clarified notifications responsibilities; added clarification to support staff notifications.	Annual Update
Volume 5, Section 3.0	NA	Consolidated procedure to provide for actions at any Emergency Classification Level.	Annual Update, State Staff Comment

1989 PLAN/PROCEDURES UPDATE  
 RESOLUTION TRACKING (ROADMAP)

AFFECTED SECTION	ISSUE	CORRECTIVE ACTION	SOURCE OF COMMENT
Volume 5, Section 4.0	NA	Moved provision for receiving PAR information to be provided by IFO Staff; added provision for considering regional support/assistance; added provision for use of pre-recorded General Emergency EBS message, if needed; added provision for considering the disposal of radiological waste during the recovery phase; and moved responsibility for receipt of utility notifications to Section 5.0.	Annual Update
Volume 5, Section 5.0	NA	Added responsibility for ensuring receipt of utility notifications and clarified provisions for coordination of effort with Massachusetts, NHYORO and Maine.	Annual Update

1989 PLAN/PROCEDURES UPDATE  
RESOLUTION TRACKING (ROADMAP)

AFFECTED SECTION	ISSUE	CORRECTIVE ACTION	SOURCE OF COMMENT
Volume 5, Section 6.0	NA	Minor reorganization.	Annual Update
Volume 5, Section 7.0	NA	See Volume 5, Generic Changes.	Annual Update
Volume 5, Section 8.0	NA	Modified language governing State Transportation Staging Area (TSA) activation and vehicle assignments; standardized use of TSA title; added provision for considering the dispatch of vehicles to local TSA's prior to a PAR; added provision for sheltering Portsmouth State TSA Staff, if recommended; and provided provision for requesting times of vehicle routing in order to forward information to Media Liaison.	Annual Update

1989 PLAN/PROCEDURES UPDATE  
RESOLUTION TRACKING (ROADMAP)

AFFECTED SECTION	ISSUE	CORRECTIVE ACTION	SOURCE OF COMMENT
Volume 5, Section 9.0	NA	Deleted duplicate information that is also provided on Form 300D, Communications Systems Status Report.	Annual Update
Volume 5, Section 10.0	NA	EOF Liaison procedure revised to reflect liaison (and IFO Staff) report to the IFO without first having to report to EOC; clarified responsibilities and added Recovery/Re-entry section.	Annual Update
Volume 5, Section 11.0	NA	Integrated procedure with Section 10.0; clarified reporting responsibilities; and provided a Recovery/Re-entry section.	Annual Update

1989 PLAN/PROCEDURES UPDATE  
 RESOLUTION TRACKING (ROADMAP)

AFFECTED SECTION	ISSUE	CORRECTIVE ACTION	SOURCE OF COMMENT
Volume 5, Section 12.0	NA	Referenced new Community Status Report Form; added provision to request town notification status from State EOC; clarified reporting responsibilities; added provision for Special Needs Liaisons; provided listing of agencies represented at IFO and when they report; added provision for requesting communications status from IFO Communicator; added provision for coordinating briefings with EOC Liaison and DPHS IFO Coordinator; clarified actions resulting from siren failure; added provision for receipt of State road condition status and the forwarding of that information; and general IFO operations clarifications.	Annual Update

1989 PLAN/PROCEDURES UPDATE  
 RESOLUTION TRACKING (ROAD/IAP)

AFFECTED SECTION	ISSUE	CORRECTIVE ACTION	SOURCE OF COMMENT
Volume 5, Section 13.0	NA	See Volume 5, Generic Changes.	Annual Update
Volume 5, Section 14.0	NA	Changed NHOEM Local Liaison reporting and coordination responsibilities from IFO Controller to IFO Resource Coordinator; added new form and provision for requesting transportation requirements from Local EOC's; added requirements for providing vehicle ETA's to Local EOC's; schools and special facilities added to transportation work sheets for use for towns unable to respond; and added responsibilities associated with emergency worker exposure tracking for towns unable to respond.	Annual Update

1989 PLAN/PROCEDURES UPDATE  
RESOLUTION TRACKING (ROADMAP)

AFFECTED SECTION	ISSUE	CORRECTIVE ACTION	SOURCE OF COMMENT
Volume 5, Section 15.0	NA	Added new procedure which provides for verification and facilitation of transportation requirements of persons having special needs in towns unable to respond.	Annual Update
Volume 5, Section 16.0	NA	Provided clarification of the details of radio communications with Portsmouth State TSA, with Sheriff's Department Personnel and with the IFO Resource Coordinator; referenced and provided for use of Form 120F and IFO Radio Room Roll Call Log Form; and provision for informing the local communities of scheduled PANS activation times.	Annual Update



1989 PLAN/PROCEDURES UPDATE  
RESOLUTION TRACKING (ROADMAP)

AFFECTED SECTION	ISSUE	CORRECTIVE ACTION	SOURCE OF COMMENT
Volume 5, Section 17.0	NA	See Volume 5, Generic Changes.	Annual Update
Volume 5, Section 18.0	NA	Added that the position may be staffed by IFO technical support person, as needed.	Annual Update
Volume 5, Section 19.0	NA	See Volume 5, Generic Changes.	Annual Update, Training Comments
Volume 5, Section 20.0	NA	See Volume 5, Generic Changes.	Annual Update, Training Comments
Volume 5, Section 21.0	NA	Procedure deleted; responsibilities assigned to Rumor Control Assistant in JTIC.	Annual Update
Volume 5, Section 22.0	NA	See Volume 5, Generic Changes.	Annual Update
Volume 5, Section 23.0	NA	Added provision for ensuring coordination between Media Relations Supervisors.	Annual Update

1989 PLAN/PROCEDURES UPDATE  
RESOLUTION TRACKING (ROADMAP)

AFFECTED SECTION	ISSUE	CORRECTIVE ACTION	SOURCE OF COMMENT
Volume 5, Section 24.0	NA	See Volume 5, Generic Changes.	Annual Update
Volume 5, Section 25.0	NA	See Volume 5, Generic Changes.	Annual Update
Volume 5, Section 26.0	NA	Added provision for back-up door-to-door notification in towns unable to respond; added provision for IFO Staff reporting responsibilities to include Special Needs/Local Liaisons; reassigned applicable liaison and RC Sheriff's Deputy reporting responsibilities from IFO Controller to IFO Resource Coordinator; combined Site Area Emergency actions with General Emergency actions; added clarification that listed	Annual Update

1989 PLAN/PROCEDURES UPDATE  
 RESOLUTION TRACKING (ROADMAP)

AFFECTED SECTION	ISSUE	CORRECTIVE ACTION	SOURCE OF COMMENT
Volume 5, Section 26.0 (Continued)		transportation requirements are to be relied upon if current requirements cannot be confirmed; added clarification that IFC Resource Coordinator should be given status on bus routing and completion times when known; and added provision for obtaining additional special needs transportation as needs arise.	
Volume 5, Section 27.0	NA	Deleted duplicate step that was already included in Section 3.0.	Annual Update

1989 PLAN/PROCEDURES UPDATE  
RESOLUTION TRACKING (ROADMAP)

AFFECTED SECTION	ISSUE	CORRECTIVE ACTION	SOURCE OF COMMENT
Volume 6 Generic	NA	Created from the procedures section of old Volume 4A.	Annual Update
		Moved forms to Volume 8.	Annual Update
		Corrected and reformatted as part of this revision.	Annual Update
Volume 6 Section 1.0	NA	Replaced Accident Assessment Support with METPAC Operator.	Annual Update
Volume 6 Section 2.0	NA	See Volume 6, Generic Changes.	Annual Update
Volume 6 Section 3.0	NA	Replaced Accident Assessment Support with METPAC Operator.	Annual Update

1999 PLAN/PROCEDURES UPDATE  
 RESOLUTION TRACKING (ROADMAP)

AFFECTED SECTION	ISSUE	CORRECTIVE ACTION	SOURCE OF COMMENT
Volume 6 Section 3.0 (cont )		Added provision to consider any patients transported to MS-1 hospitals as candidates for entry into the Radiological Screening Program.	
Volume 6 Section 4.0	NA	See Volume 6, Generic Changes.	Annual Update
Volume 6 Section 5.0	NA	See Volume 6, Generic Changes.	Annual Update
Volume 6 Section 6.0	NA	See Volume 6, Generic Changes.	Annual Update
Volume 6 Section 7.0	NA	Replaced Accident Assessment Support with METPAC operator.	Annual Update
Volume 6 Section 8.0	NA	See Volume 5, Generic Changes.	Annual Update

1989 PLAN/PROCEDURES UPDATE  
 RESOLUTION TRACKING (ROADMAP)

AFFECTED SECTION	ISSUE	CORRECTIVE ACTION	SOURCE OF COMMENT
Volume 6 Section 9.0	NA	Generally revised and enhanced based on drill/exercise comments.	Drills/exercises Annual Update
Volume 6 Section 10.0	NA	Generally revised and enhanced based on drill/exercise comments.	Drills/exercises Annual Update
Volume 6 Section 11.0	NA	New procedure added to provide instructions for Field Sampling Teams (provide instructions for environmental sampling).	Annual Update
Volume 6 Section 12.0	NA	Added reference to Radiological Lab Procedure Manual.	Annual Update
Volume 6 Section 12.0	NA	Added reference to Radiological Officer procedure and deleted this information from Volume 6.	Annual Update

1989 PLAN/PROCEDURES UPDATE  
RESOLUTION TRACKING (ROADMAP)

AFFECTED SECTION	ISSUE	CORRECTIVE ACTION	SOURCE OF COMMENT
Volume 6 Section 13.0	NA	See Volume 6, Generic Changes.	Annual Update
Volume 6 Section 14.0	NA	Changed title from "Child Care Licensing Bureau" to "Day Care Notification Team".	Annual Update

1989 PLAN/PROCEDURES UPDATE  
RESOLUTION TRACKING (ROADMAP)

AFFECTED SECTION	ISSUE	CORRECTIVE ACTION	SOURCE OF COMMENT
Volume 7, Generic Changes	NA	Generic Changes to the sections of Volume 7 include: <ul style="list-style-type: none"><li data-bbox="966 607 1364 667">o Provided a supporting documents listing;</li><li data-bbox="966 704 1364 824">o Relocated phone numbers to the NHRERP Emergency Phone List; and</li><li data-bbox="966 862 1364 1019">o Streamlined procedures by reorganizations, clarifications, consistency changes, providing references.</li></ul>	Annual Update/Reformat



1989 PLAN/PROCEDURES UPDATE  
RESOLUTION TRACKING (ROADMAP)

AFFECTED SECTION	ISSUE	CORRECTIVE ACTION	SOURCE OF COMMENT
Volume 7, Section 2.0	NA	See Volume 7, Generic Changes.	Annual Update
Volume 7, Section 3.0	NA	See Volume 7, Generic Changes.	Annual Update
	NA	Incorporated a step into SAE and GE checklist to cover actions with EBS and news advisories.	Exercise ARCA
Volume 7, Section 4.0	NA	See Volume 7, Generic Changes.	Annual Update
Volume 7, Section 5.0	NA	See Volume 7, Generic Changes.	Annual Update
Volume 7, Section 6.0	NA	See Volume 7, Generic Changes.	Annual Update
Volume 7, Section 7.0	NA	See Volume 7, Generic Changes.	Annual Update

1989 PLAN/PROCEDURES UPDATE  
 RESOLUTION TRACKING (ROADMAP)

AFFECTED SECTION	ISSUE	CORRECTIVE ACTION	SOURCE OF COMMENT
Volume 7, Section 8.0	NA	Provided reference to Form 120N, Transportation Log, relocated Tables 8.0-1 and 8.0-2 to NHRERP Emergency Phone List and added other references and clarifications.	Annual Update
Volume 7, Section 9.0	NA	See Volume 7, Generic Changes.	Annual Update
Volume 7, Section 10.0	NA	Clarified references to Rockingham County Dispatch Center, siren activated tapes, notification of NHOEM by State Police, use of authentication codes for EES activation, and use of TCP/ACP staffing sequence and assignments.  See Volume 7, Generic Changes.	Annual Update  Annual Update

1989 PLAN/PROCEDURES UPDATE  
RESOLUTION TRACKING (ROADMAP)

AFFECTED SECTION	ISSUE	CORRECTIVE ACTION	SOURCE OF COMMENT
Volume 7, Section 11.0	NA	Added step that provides for statusing state road conditions to IFO personnel; deleted establishment of entrance monitoring areas at DOT facilities and recovery/re-entry section of Radiological Officers' procedure; and provided clarification for the process of determining traffic control equipment needs.	Annual Update
Volume 7, Section 12.0	NA	See Volume 7, Generic Changes.	Annual Update
Volume 7, Section 13.0	NA	See Volume 7, Generic Changes.	Annual Update

1989 PLAN/PROCEDURES UPDATE  
RESOLUTION TRACKING (ROADMAP)

AFFECTED SECTION	ISSUE	CORRECTIVE ACTION	SOURCE OF COMMENT
Volume 7, Section 14.0	NA	Integrated State Transportation Staging Area (TSA) Procedures; and clarified TSA activation, staffing, operations and use of bus conversion kits; clarified use of two local TSAs and associated staffing in Hampton during summer months; clarified coordination and communications between State TSAs, State EOC, State IFO and other areas; added provision for issuance of dosimetry and KI to appropriate staff; deleted reference to and use of OMNE Mall and replaced with NH Port Authority for use as State T-A; clarified categories of transportation needs; replaced old log forms with Vehicle Log Form and	Annual Update

1989 PLAN/PROCEDURES UPDATE  
RESOLUTION TRACKING (ROADMAP)

AFFECTED SECTION	ISSUE	CORRECTIVE ACTION	SOURCE OF COMMENT
Volume 7, Section 14.0 (Continued)		clarified use of forms; clarified notification contact points; and clarified procedures for the activation and opera- tion of the PANS inclusive of Beach Closing message texts.	
Volume 7, Section 15.0	NA	See Volume 7, Generic Changes.	Annual Update
Volume 7, Section 16.0	NA	See Volume 7, Generic Changes.	Annual Update
Volume 7, Section 17.0	NA	See Volume 7, Generic Changes.	Annual Update

1989 PLAN/PROCEDURES UPDATE  
 RESOLUTION TRACKING (ROADMAP)

AFFECTED SECTION	ISSUE	CORRECTIVE ACTION	SOURCE OF COMMENT
Volume 8, Generic Changes	NA	Generic Changes to Volume 8 include, providing clarification, corrections, reorganizations updates and consistency modifications.	
Volume 8, Section 1.0	NA	Revised directions to IFO to provide more accurate description; revised map to better reflect the configuration of the IFO.	Annual Update, Drill Comments
Volume 8, Section 2.0	NA	See Volume 8, Generic Changes.	Annual Update, DPHS Comments, Drill Comments
Volume 8, Section 3.0	NA	Added provision for aerial monitoring team members to report to and be dispatched from the IFO.	Annual Update, DPHS Comments, Drill Comments
Volume 8, Section 4.0	NA	See Volume 8, Generic Changes.	Annual Update

1989 PLAN/PROCEDURES UPDATE  
 RESOLUTION TRACKING (ROADMAP)

AFFECTED SECTION	ISSUE	CORRECTIVE ACTION	SOURCE OF COMMENT
Volume 8, Section 5.0	NA	See Volume 8, Generic Changes.	Annual Update, DPHS comments
Volume 8, Section 6.0	Precautionary actions for schools and boaters not discussed	Added precautionary actions for schools and boaters; Modified plume exposure protective action flow chart; added revised EPZ maps; and corrected ETE values. Added reference to the ETE Handbook under Supporting Documents List.	Annual Update, FEMA Technical Assistance Comments
Volume 8, Section 6.5	NA	Updated Figure 6.5.1 ERPA Population totals.	Annual Update
Volume 8 Section 6.7	NA	Updated ETE values based on ETE Study update.	Annual Update
Volume 8, Section 7.0	NA	See Volume 8, Generic Changes.	Annual Update
Volume 8, Section 8.0	NA	See Volume 8, Generic Changes.	Annual Update
Volume 8, Section 9.0	NA	Provided clarification of interface with staging area and MS-1 hospitals.	Annual Update

1989 PLAN/PROCEDURES UPDATE  
 RESOLUTION TRACKING (ROADMAP)

AFFECTED SECTION	ISSUE	CORRECTIVE ACTION	SOURCE OF COMMENT
Volume 8, Section 10.0	NA	Enhanced equipment checkouts and operation; adjusted inventory lists; modified procedures based on drill/exercise comments.	Annual Update, DPES Comments, Drill/Exercise Comments
Volume 8, Forms Section	NA	Volume 8, Forms Section provides those forms that are generic to more than one position in the ERO. Changes to forms included streamlining, minor re-organizations, corrections, consistency modifications and the addition/deletion of forms as a result of procedure modifications.	Annual Update



## 1989 PLAN/PROCEDURES UPDATE

## RESOLUTION TRACKING (ROADMAP)

AFFECTED SECTION	ISSUE	CORRECTIVE ACTION	SOURCE OF COMMENT
Volume 9, Generic Changes	NA	Moved Appendices A, B, C, E, F, I, J, and L from old Volume 2 to new Volume 9. Moved Appendices G, R, S, and T from old Volume 4A to new Volume 9. Included minor editorial changes, header and pagination changes.	Annual Update/Reformat

1989 PLAN/PROCEDURES UPDATE  
 RESOLUTION TRACKING (ROADMAP)

AFFECTED SECTION	ISSUE	CORRECTIVE ACTION	SOURCE OF COMMENT
Volume 9, Appendix A	NA	Minor changes to Emergency Classification Flowchart.	Annual Update
Volume 9, Appendix B	NA	Provided ascription of source to applicable EBS messages. Provided page header, clarifications, streamlined, instructions, directions for evacuees, and grouped towns into ERPAs.	Annual Update
Volume 9, Appendix C	NA	See Volume 9, Generic Changes. Updated evacuation route descriptions, estimated transit requirements, and population totals.	Annual Update

1989 PLAN/PROCEDURES UPDATE  
 RESOLUTION TRACKING (ROADMAP)

AFFECTED SECTION	ISSUE	CORRECTIVE ACTION	SOURCE OF COMMENT
Volume 9, Appendix D	NA	Separated inventories of dosimetry to show allotments for both State TSAs and DOT District 6 (Durham) and the Hampton Turnpike Garage. Adjusted inventory for the CAP.	Annual Update
Volume 9, Appendix D	NA	Updated listing of bus and ambulance companies. Updated ambulance company radio frequencies, Teamster emergency driver pool, and State TSA information. Deleted "Additional Personnel Resources" section.	Annual Update

1989 PLAN/PROCEDURES UPDATE  
RESOLUTION TRACKING (ROADMAP)

AFFECTED SECTION	ISSUE	CORRECTIVE ACTION	SOURCE OF COMMENT
Volume 9, Appendix D	NA	Updated field monitoring and sampling team equipment inventories.	Rad Monitoring Drill
Volume 9, Appendix E	NA	Rewrote section to incorporate new guidance for re-entry and recovery, including dose limits, calculation methods, and response actions.	FEMA Technical Assistance
Volume 9, Appendix F	NA	Updated the support plan list.	Annual Update
	NA	Minor editorial changes.	Annual Update
	NA	Updated NUREG-0654 cross-reference based on changes made during reformat.	Annual Update/Reformat

1989 PLAN/PROCEDURES UPDATE  
RESOLUTION TRACKING (ROADMAP)

AFFECTED SECTION	ISSUE	CORRECTIVE ACTION	SOURCE OF COMMENT
Volume 20	NA	Added ERPA, JTIC, NAS, NHYORO, SAU and TLD to list.	Annual Update
Volume 20, Section 1.2	NA	Alphabetized the definitions. Deleted the definition for Emergency Planning Coordinator. Added definitions for Drill, Exercise, JTIC, ERPA, Precautionary Action.	Annual Update
Volume 20, Section 1.3	NA	Rewrote authorities section to reflect the new version of the state law, RSA 107-C. (No changes to RSA 107-B).	Annual Update
Volume 20, Section 1.4	NA	Deleted references to RSA 125, NH EBS Plan, and FEMA ECS-1. Add references to FEMA-REP-10 and FEMA-REP-11.	Annual Update
Volume 20, Section 1.5	NA	Reworded the "situation" section of plan to be applicable to all towns.	Annual Update
	NA	Updated population figures on Table 1.5-1.	Annual Update

1989 PLAN/PROCEDURES UPDATE  
RESOLUTION TRACKING (ROADMAP)

AFFECTED SECTION	ISSUE	CORRECTIVE ACTION	SOURCE OF COMMENT
Volume 20, Section 1.5	NA	Redrew maps (10-mile, ERPA, etc.) to improve legibility.	Annual Update
Volume 20, Section 1.6	NA	Placed general organizational information into Vol. 20 and identified individual responsibilities unique to each town in Vols. 21-37.	Annual Update
	NA	Included support/service organizations.	Annual Update
	Update EBS Station listing to reflect changes to LOAs.	Updated EBS Station listing matrix.	Annual Update
Volume 20, Section 1.7	NA	Reworded ECL descriptions and definitions to more closely correlate to each other and to NUREG-0654.	Annual Update
Volume 20, Section 1.8	NA	Updated descriptions of the Plume Exposure Pathway and Ingestion Exposure Pathway.	Annual Update

1989 PLAN/PROCEDURES UPDATE  
RESOLUTION TRACKING (ROADMAP)

AFFECTED SECTION	ISSUE	CORRECTIVE ACTION	SOURCE OF COMMENT
Volume 20, Section 2.2	NA	Added section on command and control.	Annual Update/Reformat
Volume 20, Section 2.3	NA	Changed contact point to a more generalized term, i.e., Control Room Communicator.	Annual Update
Volume 20, Section 2.4	NA	The correct time frequency for communications testing is biennial.	Annual Update
	NA	Updated Emergency Communications Systems.	Annual Update
Volume 20, Section 2.5	NA	Added statement that as a backup to RCDC and if requested by NHOEM, the Control Room can activate the sirens.	Annual Update
	NA	Updated Public Alerting Emergency Information Section (Upgrades to Sirens, Tone Alert radios, etc.).	Annual Update

1989 PLAN/PROCEDURES UPDATE  
 RESOLUTION TRACKING (ROADMAP)

AFFECTED SECTION	ISSUE	CORRECTIVE ACTION	SOURCE OF COMMENT
Volume 20, Section 2.6	NA	Updated Public Information Material Listings.	Annual Update
Volume 20, Section 2.6 and 2.7	NA	The Joint Telephone Information Center was added to sections discussing the media center and rumor control.	Annual Update
Volume 20, Section 2.7	NA	Updated locally operated facilities to ensure EPZ EOC's are opened at the ALERT level to provide access for key staff with emergency responsibilities.	Annual Update
	Ensure references are made to the Emergency Worker Facility.	Included reference to the Emergency Worker Monitoring/Decontamination Facility.	Hearing Commitment
Volume 20, Section 2.11	NA	Added the NH Traffic Management Manual as a reference to access control and traffic management discussions.	Annual Update



1989 PLAN/PROCEDURES UPDATE  
 RESOLUTION TRACKING (ROADMAP)

AFFECTED SECTION	ISSUE	CORRECTIVE ACTION	SOURCE OF COMMENT
Volume 20, Section 2.11 (Continued)	<p>Develop priority to notify and evacuate identified Special Needs and Special Facilities.</p> <p>NA</p> <p>Ensure critical emergency services are established prior to releasing emergency workers (municipal security, fire suppression).</p>	<p>Added priority for special arrangements for Special Needs Individuals and Special Facilities.</p> <p>Corrected agency titles such as Water Supply and Pollution Control Commission to Division of Water Supply and Pollution Control.</p> <p>Added statement to ensure critical emergency services are established by local officials and NHOEM prior to releasing Emergency Workers.</p>	<p>FEMA Technical Assistance Comment</p> <p>Annual Update</p> <p>FEMA Technical Assistance Comment</p>
Volume 20, Section 3.2	Family Plan Training is not described.	Added a description of the Family Plan Training module to the text.	Annual Update
Volume 20, Section 3.3	NA	Updated Exercise/Drills section to reflect changes in the SONH program.	Annual Update

1989 PLAN/PROCEDURES UPDATE  
RESOLUTION TRACKING (ROADMAP)

AFFECTED SECTION	ISSUE	CORRECTIVE ACTION	SOURCE OF COMMENT
Volume 20, Section 3.4	NA	Updated Preparedness Responsibilities to reflect changes and the reformat (including maintenance description).	Annual Update

1989 PLAN/PROCEDURES UPDATE  
RESOLUTION TRACKING (ROADMAP)

AFFECTED SECTION	ISSUE	CORRECTIVE ACTION	SOURCE OF COMMENT
V. 41, A...	NA	Reformatted local so that all gener information goes Volume 10 and to information goes into Volumes 21 through 43	Annual Update/Reformat

1989 PLAN/PROCEDURES UPDATE  
 RESOLUTION TRACKING (ROADMAP)

AFFECTED SECTION	ISSUE	CORRECTIVE ACTION	SOURCE OF COMMENT
Generic Updates to Volume 21-37  Volume 21-37 Global Changes	NA	Changed NHCDA to NHOEM, Civil Defense to Emergency Management, Civil Defense Agency to Office of Emergency Management, CDV-700 to CDV-700 or equivalent, CDV-138 to 0-200 mR dosimeter, CDV-730 to 0-20R dosimeter, survey meter to survey instrument, Rockingham County Dispatch to Rockingham County Dispatch Center, Mass Care Centers to Mass Care Shelters, IFO Controller to NHOEM Local Liaison, and Public Alerting System to Public Alert and Notification System.	Annual Update

1989 PLAN/PROCEDURES UPDATE  
RESOLUTION TRACKING (ROADMAP)

AFFECTED SECTION	ISSUE	CORRECTIVE ACTION	SOURCE OF COMMENT
Volume 21-37, All Sections	NA	Deleted distribution list from front matter of the town plan. This list is maintained under separate cover by NHOEM.	Annual Update
	NA	Moved all phone numbers into a stand alone document called the NHRERP Emergency Phone List.	Annual Update/Reformat
	NA	Added "Wheelchair Van" to the Request for Transportation Requirements Worksheet form.	Annual Update
Volume 21-37, Section 1.3	NA	Updated population totals.	Annual Update
Volume 21-37 Section 1.5	NA	Formulated existing emergency preparedness responsibilities into a matrix.	Annual Update/Reformat
Volume 21-37, Section 1.6	NA	Formulated existing text that correlated the procedures with respective plan sections into a table.	Annual Update

## 1989 PLAN/PROCEDURES UPDATE

## RESOLUTION TRACKING (ROADMAP)

AFFECTED SECTION	ISSUE	CORRECTIVE ACTION	SOURCE OF COMMENT
Volume 21-37, Section 1.3 and 2.5	NA	Updated list of Special Facilities (e.g., camp-grounds, nursing homes, schools).	Annual Update
Volume 21-37, Section 2.2	NA	Removed siren rating column from table showing "siren locations."	Annual Update
	NA	Updated siren location descriptions.	Annual Update
Volume 21-37, Section 2.2 and 2.3	Add statement when support positions will be staffed.	Added statement that ensures support position (TCP's TSA's) are staffed by available personnel based on the ECL.	FEMA Technical Assistance Comment
Volume 21-37, Section 2.2 and 3.0	NA	Updated notification fan-out schemes.	Annual Update
Volume 21-37, Section 2.3	NA	Updated communications description. Minor changes to wording and subsystem illustrations.	Annual Update

1989 PLAN/PROCEDURES UPDATE  
RESOLUTION TRACKING (ROADMAP)

AFFECTED SECTION	ISSUE	CORRECTIVE ACTION	SOURCE OF COMMENT
Volume 21-37, Section 3.0	Incorporate use of Local Liaison Communications Status form to local plans.	Added reference to the use of Form 30CE Local Liaison Communications/Status Form for status reports from NHOEM.	Drill Comment
	NA	Added language to Selectmen, EM Director, Fire Chief or Police Chief to open the EOC at the Alert Level to provide access for key staff with emergency responsibilities.	Annual Update
	Add statement to procedures to have available field personnel to report siren sounding upon request.	Added statement to request confirmation of siren activation from available field personnel.	FEMA Technical Assistance Comment
	NA	Added step to procedures to ensure personnel report any shortage of personnel or equipment to the Emergency Management Director.	Annual Update

1989 PLAN/PROCEDURES UPDATE  
RESOLUTION TRACKING (ROADMAP)

AFFECTED SECTION	ISSUE	CORRECTIVE ACTION	SOURCE OF COMMENT
Volume 21-37, Section 3.0 (Continued)	NA	Revised support staffing language in procedures (Monitor AM/FM radio, Command and Control radio, etc.).	Annual Update
	NA	Deleted reference to the word "strip" maps.	Annual Update
	NA	Added statement to transportation procedure to ensure NHOEM is informed when bus routing begins and ends.	Annual Update
	NA	Deleted reference to assign "EMS" personnel to special needs buses.	Annual Update
	Add note to procedure to ensure outside resource groups are provided dosimetry.	Added note to RADEF procedure to provide dosimetry to outside resource providers (towing services, road crews, etc.), and if side affects from KI, added assign escort if needed to assist worker leaving the area.	Annual Update Exercise/Drill Comment



1989 PLAN/PROCEDURES UPDATE  
RESOLUTION TRACKING (ROADMAP)

AFFECTED SECTION	ISSUE	CORRECTIVE ACTION	SOURCE OF COMMENT
Volume 21-37, Section 3.0 (Continued)	Review staffing of the EOC and support positions (Traffic Control, Local TSA, etc.) with key staff.	Revised procedures to ensure key staff review ERO staffing levels and ensure they are maintained.	FEMA Technical Assistance Comment
	Ensure key staff review equipment, staffing requirement availabilities.	Added step to key staff procedures (Fire, Police) to ensure they review personnel, equipment requirements.	
	NA	Updated lists of emergency response equipment (EOC, Fire, Police, etc.).	Annual Update
	Establish notification and transportation resource dispatch priority.	Added note to procedures which provides reference to order of notification and dispatch of vehicles (references transportation worksheets).	FEMA Technical Assistance Comment

1989 PLAN/PROCEDURES UPDATE  
 RESOLUTION TRACKING (ROADMAP)

AFFECTED SECTION	ISSUE	CORRECTIVE ACTION	SOURCE OF COMMENT
Volume 21-37, Section 3.0 (Continued)	NA	Added statement to Emergency Management Director's procedure which grants command and control authority in the event elected officials can not be contacted.	Annual Update
	Reference use of the Traffic Management Manual.	Incorporated references to the Traffic Management Manual.	FEMA Technical Assistance Comment
	NA	Deleted message flow instructions from Town Clerk or applicable procedures. (Instructions included in training program.)	Annual Update
	NA	Deleted step to take periodic photos of the status board from Town Clerk or applicable procedure.	Annual Update

## 1989 PLAN/PROCEDURES UPDATE

## RESOLUTION TRACKING (ROADMAP?)

AFFECTED SECTION	ISSUE	CORRECTIVE ACTION	SOURCE OF COMMENT
Volume 21-37, Section 3.0 (Continued)	<p>Include provision for contacting the hearing impaired.</p> <p>Ensure critical emergency services are maintained after evacuation is complete (fire suppression, municipal security).</p> <p>Add word "<u>sheltering</u>" during and after evacuation to maintain municipal security.</p> <p>Revise Road/Highway Agent Public Works Director to assess local evacuation routes.</p>	<p>Added statements to Transportation Coordinator or applicable procedure to ensure individuals requiring special notification are contacted.</p> <p>Added statement to Selectmen or applicable procedure to coordinate with NHOEM the critical emergency services prior to evacuating emergency workers.</p> <p>Added "sheltering" to procedural step under Police Chief.</p> <p>Revised procedure step to have local Road/Highway Agent Public Works Director to provide a current status on local evacuation routes to EM Director.</p>	<p>Hearing Stipulation</p> <p>FEMA Technical Assistance Comment</p> <p>FEMA Technical Assistance Comment</p> <p>FEMA Technical Assistance Comment</p>

1989 PLAN/PROCEDURES UPDATE  
RESOLUTION TRACKING (ROADMAP)

AFFECTED SECTION	ISSUE	CORRECTIVE ACTION	SOURCE OF COMMENT
Volume 21-37, Section 3.0 (Continued)	Coordinate local news briefings with NHOEM prior to releasing information.	Added steps to procedures to coordinate local news briefing with NHOEM prior to and after release.	FEMA Technical Assistance Comment

1989 PLAN/PROCEDURES UPDATE  
 RESOLUTION TRACKING (ROADMAP)

AFFECTED SECTION	ISSUE	CORRECTIVE ACTION	SOURCE OF COMMENT
Volume 21 Brentwood Plan Information and Implementing Procedures	NA	Updated EOC floor plan drawing in the plan.	Annual Update
Volume 21, Section 3.0	NA	Added step to FM Directors procedure to report to EOC if activated at the Alert ECL.	Annual Update
	NA	Deleted reference to ERBS. The state uses EBS (Emergency Broadcast System).	Annual Update

1989 PLAN/PROCEDURES UPDATE  
 RESOLUTION TRACKING (ROADMAP)

AFFECTED SECTION	ISSUE	CORRECTIVE ACTION	SOURCE OF COMMENT
Volume 22 East Kingston Plan Informa- tion and Implementing Procedures	NA	Added step to procedures to ensure key officials report to EOC if it is activated at an Alert ECL.	Annual Update
Volume 22	NA	The title "Highway Agent" should be changed to "Road Agent."	Annual Update

1989 PLAN/PROCEDURES UPDATE  
 RESOLUTION TRACKING (ROADMAP)

AFFECTED SECTION	ISSUE	CORRECTIVE ACTION	SOURCE OF COMMENT
Volume 23 Exeter Plan Information and Implement- ing Procedures	NA	Added EOC Controller, Resident Pick Up Staging Area Supervisor, Local Transportation Staging Area Supervisor to respon- sibility matrix.	Annual Update
Volume 23, Section 2.4	NA	Updated EOC floor plan to reflect location changes.	Annual Update
Volume 23, Section 3.0	NA	Changed reporting location for Transportation Coordi- nator and Staging Area personnel (from Community building to the EOC).	Annual Update
	Re-order Transportation Coordinator procedures into logical order.	Reorganized Transportation Coordinator's procedure steps to reflect drill comments.	Drill Comment
	NA	Deleted reference to ERBS. The State uses EBS or Emergency Broadcast System.	Annual Update

1989 PLAN/PROCEDURES UPDATE  
RESOLUTION TRACKING (ROADMAP)

AFFECTED SECTION	ISSUE	CORRECTIVE ACTION	SOURCE OF COMMENT
Volume 23, Section 3.0 (Continued)	NA	<p>Deleted the following steps from Police Chief procedure:</p> <ol style="list-style-type: none"> <li>1) To have RADEF Officer set up in Room 212 of the Public Safety Complex. RADEF Officer will set up in new EOC location.</li> <li>2) Dispatch patrols during sheltering to notify the public to take shelter.</li> </ol>	Annual Update
	NA	Deleted School Superintendent Procedure (procedure is part of a stand alone support plan).	Annual Update



1989 PLAN/PROCEDURES UPDATE  
 RESOLUTION TRACKING (ROADMAP)

AFFECTED SECTION	ISSUE	CORRECTIVE ACTION	SOURCE OF COMMENT
Volume 23, Section 3.0 (Continued)	NA	Revised Public Safety Dispatcher procedure to reduce the number of personnel contacted at Unusual Event and Alert levels.	Annual Update
	NA	Added Transportation Coordinator and EMS Coordinator to notification list for the Alert level.	Annual Update
	NA	Removed redundant step from Town Manager procedure to hold weather briefings. Overall briefings will include weather information.	Annual Update

1989 PLAN/PROCEDURES UPDATE  
RESOLUTION TRACKING (ROADMAP)

AFFECTED SECTION	ISSUE	CORRECTIVE ACTION	SOURCE OF COMMENT
Volume 24 Greenland Plan Information and Implementing Procedures	NA	No town specific changes.	NA

1989 PLAN/PROCEDURES UPDATE  
RESOLUTION TRACKING (ROADMAP)

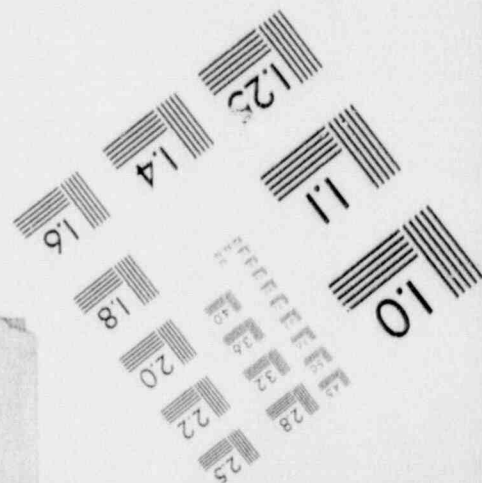
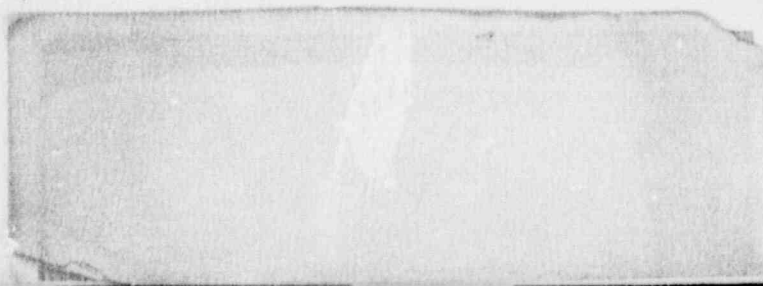
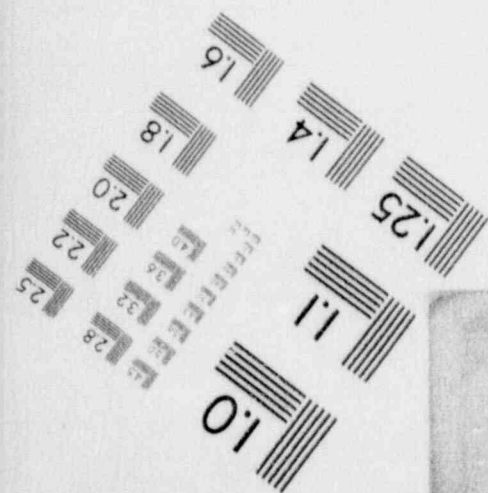
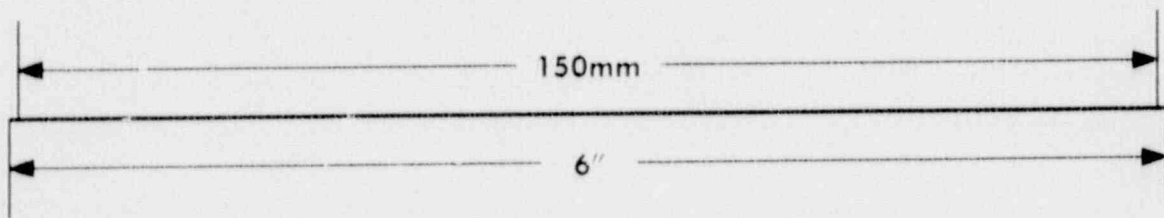
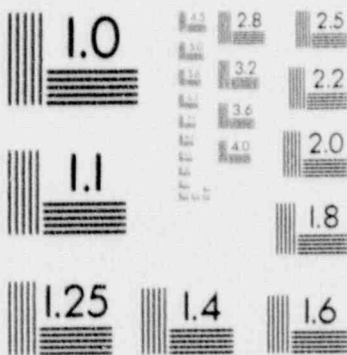
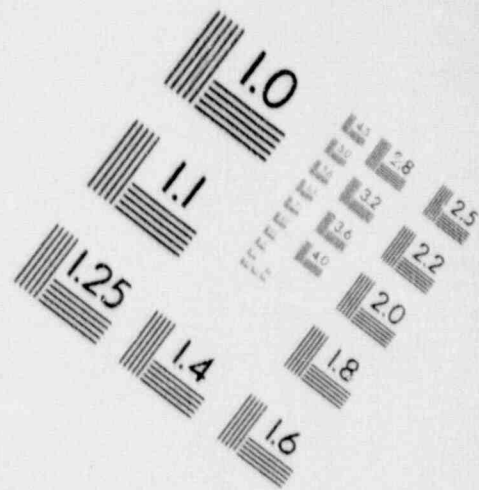
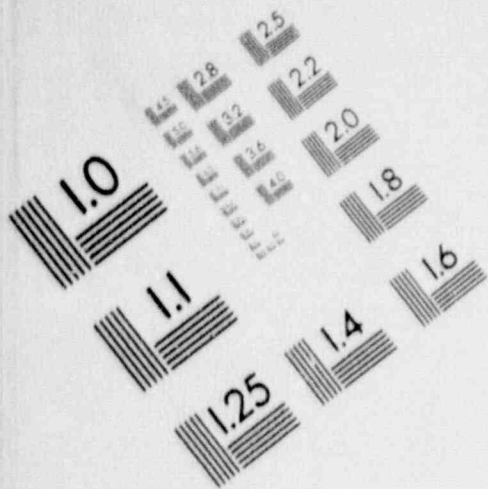
AFFECTED SECTION	ISSUE	CORRECTIVE ACTION	SOURCE OF COMMENT
Volume 25 E- ton Plan Information and Implementing Procedures	NA	Moved Town Manager block so that it indicates being in direct charge of emergency organization.	Annual Update
Volume 25, Section 3.0	NA	Deleted School Superintendent procedures and moved information into stand alone plans.	Annual Update

1989 PLAN/PROCEDURES UPDATE  
RESOLUTION TRACKING (ROADMAP)

AFFECTED SECTION	ISSUE	CORRECTIVE ACTION	SOURCE OF COMMENT
Volume 26, Hampton Falls Plan Infor- mation and Implementing Procedures	NA	Deleted School Superintendent procedures and moved information into stand alone plans.	Annual Update

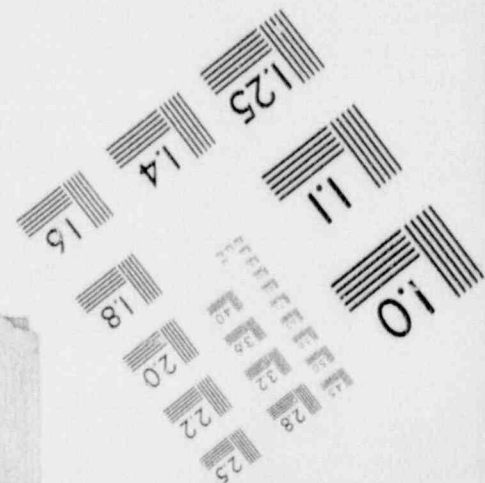
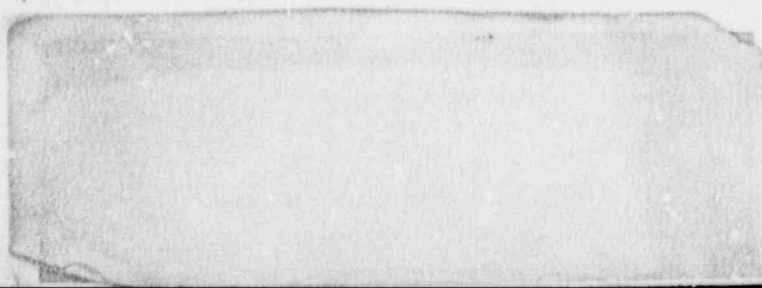
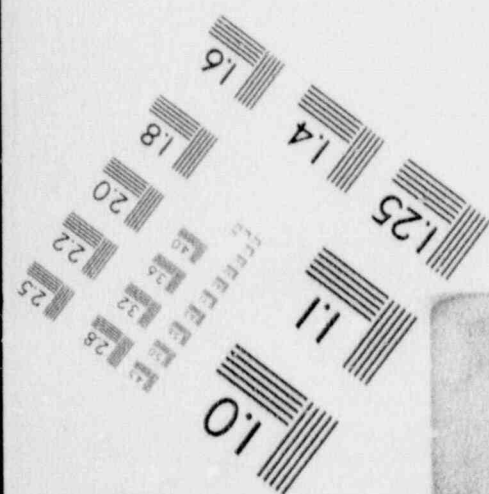
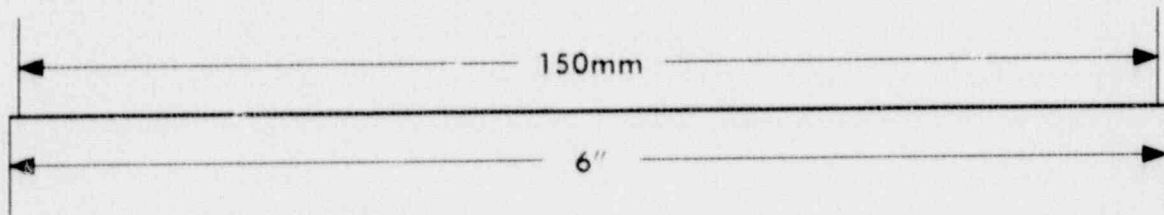
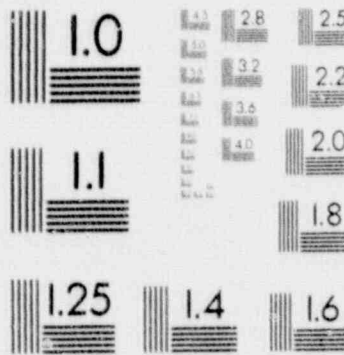
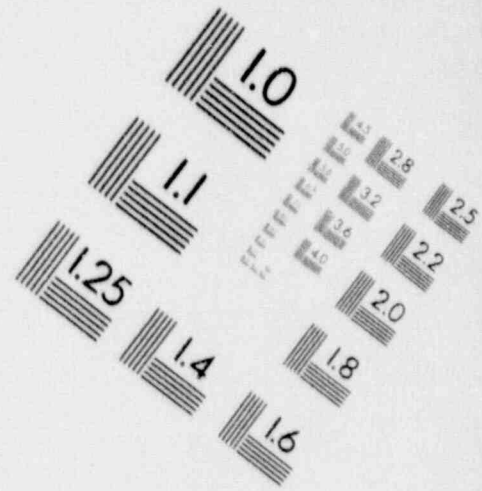
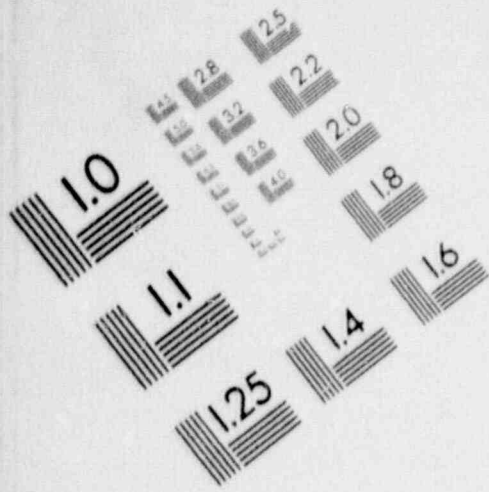
# 1

## IMAGE EVALUATION TEST TARGET (MT-3)



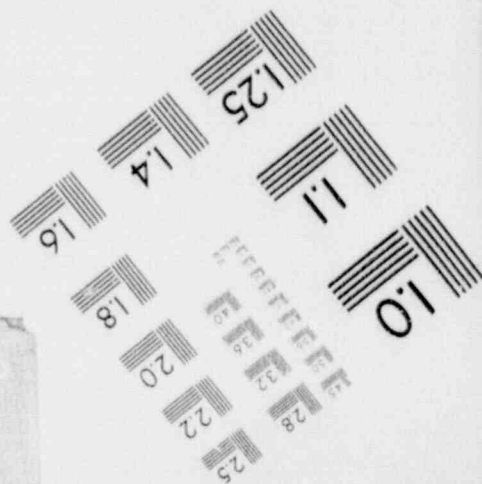
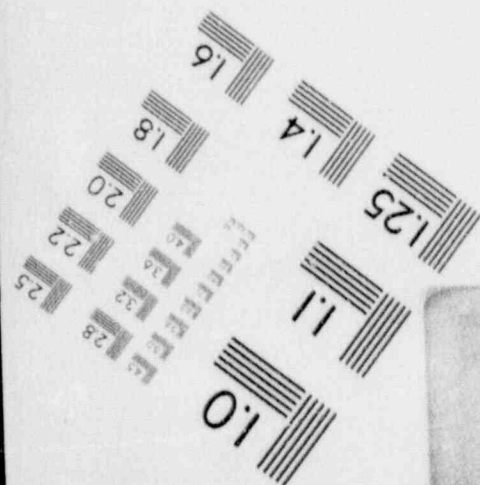
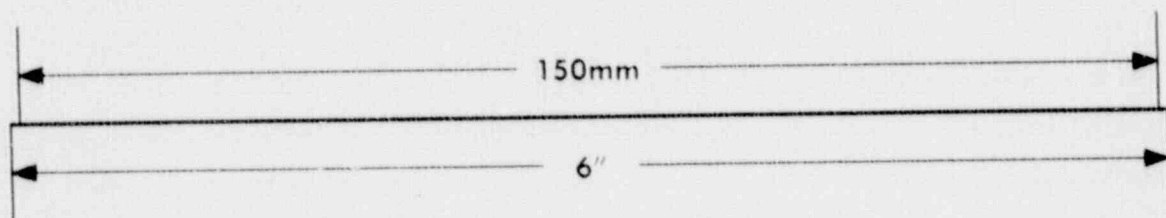
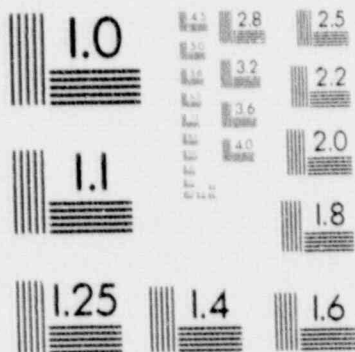
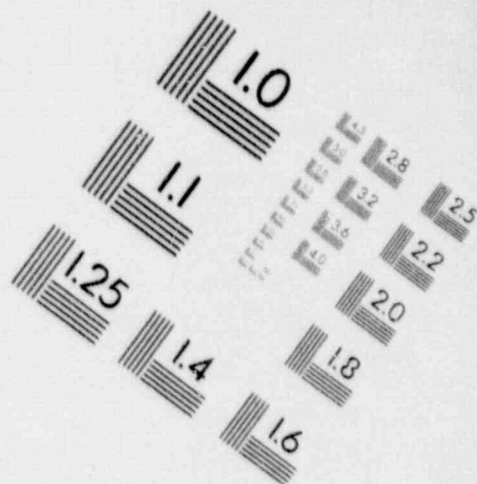
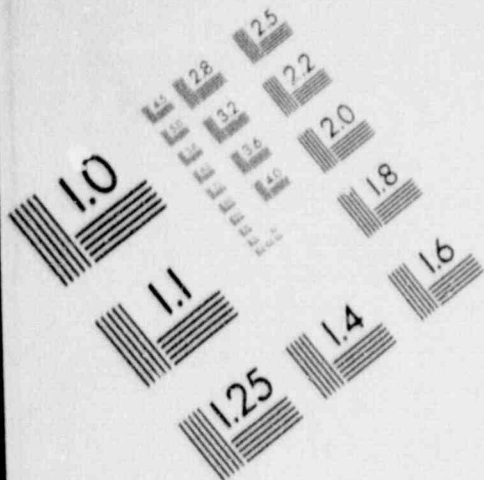
# 1

## IMAGE EVALUATION TEST TARGET (MT-3)



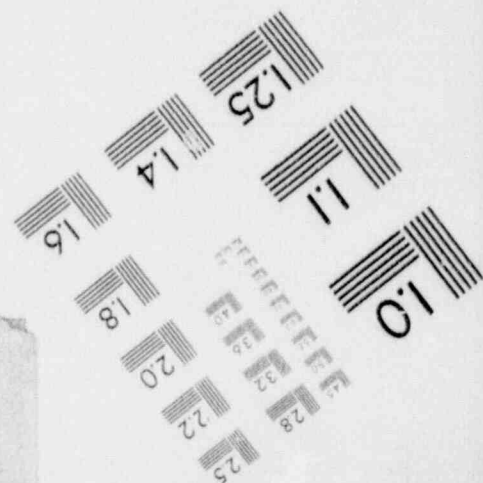
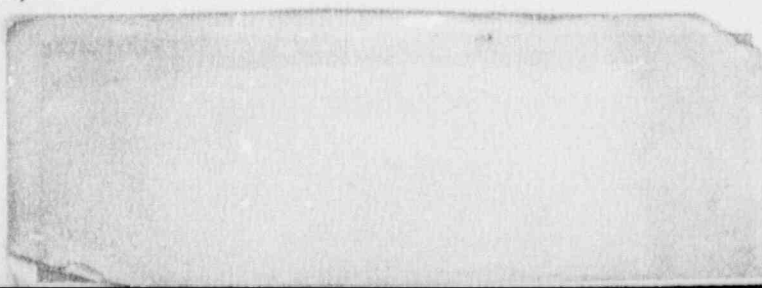
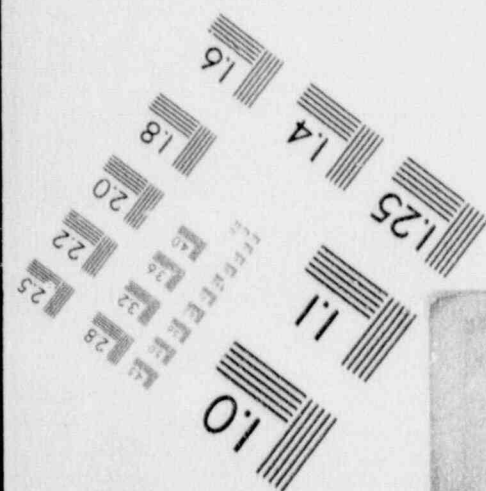
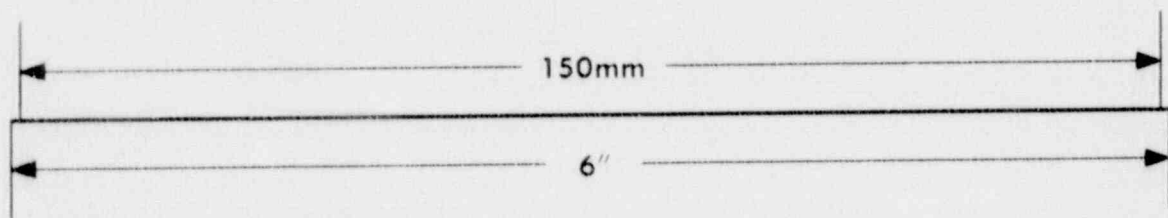
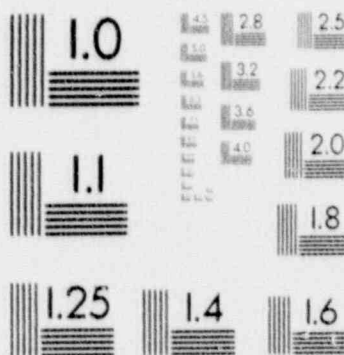
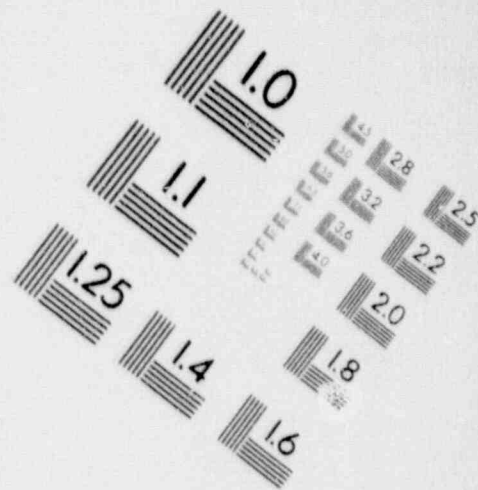
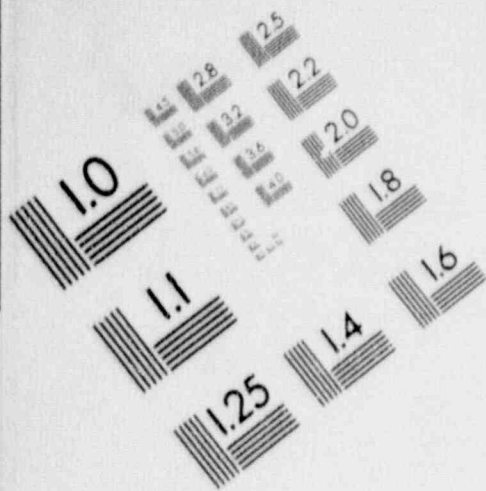
# 1

## IMAGE EVALUATION TEST TARGET (MT-3)



# 1

## IMAGE EVALUATION TEST TARGET (MT-3)





1989 PLAN/PROCEDURES UPDATE  
RESOLUTION TRACKING (ROADMAP)

AFFECTED SECTION	ISSUE	CORRECTIVE ACTION	SOURCE OF COMMENT
Volume 27 Kensington Plan Information and Implementing Procedures	NA	Deleted School Superintendent procedures and moved information into stand alone plans.	Annual Update

1989 PLAN/PROCEDURES UPDATE  
 RESOLUTION TRACKING (ROADMAP)

AFFECTED SECTION	ISSUE	CORRECTIVE ACTION	SOURCE OF COMMENT
Volume 28 Kingston Plan Information and Implementing Procedures	NA	Updated Kingston Emergency Response Organization Chart.	Annual Update
Volume 28, Section 3.0	NA	Created Transportation Coordinator procedure/ position for the Town Ambulance Director (deleted transportation checklist steps from the Emergency Management Director and Town Clerk).	Annual Update
	NA	Updated Fire Chief procedure to reflect resource assignments in the EOC.	Annual Update
	NA	Deleted backup public alerting from Police Chief procedure.	Annual Update

1989 PLAN/PROCEDURES UPDATE  
RESOLUTION TRACKING (ROADMAP)

AFFECTED SECTION	ISSUE	CORRECTIVE ACTION	SOURCE OF COMMENT
Volume 28, Section 3.0 (Continued)	NA	Revised Police Officer On Duty Or On Call to reflect addition of Transportation Coordinator to the Notification List (delete Ambulance Director).	Annual Update

1989 PLAN/PROCEDURES UPDATE  
RESOLUTION TRACKING (ROADMAP)

AFFECTED SECTION	ISSUE	CORRECTIVE ACTION	SOURCE OF COMMENT
Volume 29, New Castle Plan Information and Implementing Procedures	NA	Added steps to Selectmen and EM Director procedures to ensure that the EOC is activated at an Alert.	Annual Update
Volume 29 Section 3.0	NA	Revised Fire Chief title to Fire Officer In Charge. Changed Assistant Fire Chief to RADEF officer.	Annual Update
	NA	Removed step from Police Chiefs procedure to dispatch patrols to verify public of sheltering.	Annual Update

1989 PLAN/PROCEDURES UPDATE  
 RESOLUTION TRACKING (ROADMAP)

AFFECTED SECTION	ISSUE	CORRECTIVE ACTION	SOURCE OF COMMENT
Volume 30 Newfields Plan Information and Implementing Procedures	NA	Changed the position title Secretary to the Board of Selectmen to EOC Clerk.	Annual Update
Volume 30 Section 3.0	NA	Added step to EM Director procedure to report to EOC if activated at Alert ECL.	Annual Update

1989 PLAN/PROCEDURES UPDATE  
RESOLUTION TRACKING (ROADMAP)

AFFECTED SECTION	ISSUE	CORRECTIVE ACTION	SOURCE OF COMMENT
Volume 31 Newton Plan Information and Implementing Procedures	NA	Updated Newton Emergency Response Organization Chart.	Annual Update
Volume 31 Section 3.0	NA	Deleted requirement from Police Chief procedure to provide backup public alerting.	Annual Update

1989 PLAN/PROCEDURES UPDATE  
RESOLUTION TRACKING (ROADMAP)

AFFECTED SECTION	ISSUE	CORRECTIVE ACTION	SOURCE OF COMMENT
Volume 32 North Hampton Plan Information and Implementing Procedures	NA	Deleted all references to "Ambulance Corps Director."	Annual Update

1989 PLAN/PROCEDURES UPDATE  
RESOLUTION TRACKING (ROADMAP)

AFFECTED SECTION	ISSUE	CORRECTIVE ACTION	SOURCE OF COMMENT
Volume 33 Portsmouth Plan Information and Implementing Procedures	N/A	No town specific changes.	N/A



## 1989 PLAN/PROCEDURES UPDATE

## RESOLUTION TRACKING (ROADMAP)

AFFECTED SECTION	ISSUE	CORRECTIVE ACTION	SOURCE OF COMMENT
Volume 34 Rye Plan Information and Implementing Procedures	NA	Deleted School Superintendent procedures and moved information into stand alone plans.	Annual Update

1989 PLAN/PROCEDURES UPDATE  
RESOLUTION TRACKING (ROADMAP)

AFFECTED SECTION	ISSUE	CORRECTIVE ACTION	SOURCE OF COMMENT
Volume 35 Seabrook Plan Information and Implementing Procedures	NA	Changed Fire Dispatcher to Police Dispatcher for initial notification.	Annual Update
	NA	Deleted School Principal information which is included as a stand alone support plan.	Annual Update
Volume 35, Section 2.4	NA	Updated EOC floor plan to reflect move to new facility.	Annual Update

1989 PLAN/PROCEDURES UPDATE  
RESOLUTION TRACKING (ROADMAP)

AFFECTED SECTION	ISSUE	CORRECTIVE ACTION	SOURCE OF COMMENT
Volume 36 South Hampton Plan Information and Implementing Procedures	NA	Moved "vehicle type list" from Transportation Coordinators procedure to the Assistant EM Directors procedure.	Annual Update

1989 PLAN/PROCEDURES UPDATE  
RESOLUTION TRACKING (ROADMAP)

AFFECTED SECTION	ISSUE	CORRECTIVE ACTION	SOURCE OF COMMENT
Volume 37 Stratham Plan Information and Implementing Procedures	NA	Added Transportation Coordinator's procedures (from Fire Chief procedure).	Annual Update
Volume 37, All Sections	NA	Deleted Newmarket Dispatch from the organization. Added Police Officer On Duty or On Call to the organization.	Annual Update
Volume 37, Section 2.2	NA	Updated Notification Fan-out Scheme to reflect changes to organization.	Annual Update
Volume 37, Section 3.0	NA	Updated EOC Floor Plan.	Annual Update
	NA	Added step to Fire Chief procedure to provide personnel to support traffic control as requested.	Annual Update

1989 PLAN/PROCEDURES UPDATE  
 RESOLUTION TRACKING (ROADMAP)

AFFECTED SECTION	ISSUE	CORRECTIVE ACTION	SOURCE OF COMMENT
Volume 37, Section 3.0 (Continued)	NA	Added step to Emergency Management Director's procedure to assess staffing and make provisions for extended operations (from Fire Chief procedures).	Annual Update
	NA	Incorporated language into procedure which directs key staff to review the town's Emergency Management Plan for supplemental information.	Annual Update
	NA	Added statement into procedures to refer staff to the town's Emergency Management Plan to activate the facility (EOC).	Annual Update
	NA	Deleted Health Officer from the emergency response organization. Incorporated duties into the Medical Coordinators procedure.	Annual Update

1989 PLAN/PROCEDURES UPDATE  
 RESOLUTION TRACKING (ROADMAP)

AFFECTED SECTION	ISSUE	CORRECTIVE ACTION	SOURCE OF COMMENT
Volume 37, Section 3.0 (Continued)	NA	Removed backup public alerting from Police Chief procedure.	Annual Update
	NA	Revised Fire Chief procedure:  1) Transportation function to Transportation Coordinator; 2) EOC Communications to Communications Coordinator; and 3) EOC Maintenance inventories to EM Director.	Annual Update
	NA	Created Communication Coordinator procedure from Fire Chief procedure. Added to organization including notification list.	Annual Update

1989 PLAN/PROCEDURES UPDATE  
 RESOLUTION TRACKING (ROADMAP)

AFFECTED SECTION	ISSUE	CORRECTIVE ACTION	SOURCE OF COMMENT
Volume 37, Section 3.0 (Continued)	NA	Changed titles of Police Chief to Law Enforcement Officer and EMS to Medical Coordinator.	Annual Update
	NA	Added statement to Highway Agent and Town Clerk to have them notified and reporting to the EOC only if the facility is fully activated.	Annual Update
	NA	Added statement to the Emergency Management Directors procedure to ensure the facility is secured if sheltering is recommended (from Fire Chief procedure).	Annual Update
	N/A	Added Transportation Coordinator to Notification List (Police Officer On Duty or On Call).	Annual Update

1989 PLAN/PROCEDURES UPDATE  
RESOLUTION TRACKING (ROADMAP)

AFFECTED SECTION	ISSUE	CORRECTIVE ACTION	SOURCE OF COMMENT
Volume 38, Dover Global Changes	NA	Changed terminology and reformatted.	Annual Update/Reformat
Volume 38, Section 1	NA	Added line of succession.	Annual Update
	NA	Added Emergency Preparedness Responsibility Matrix.	Annual Update
	NA	Added provision for 24-hour operations for protracted time period.	Annual Update
	NA	Added Plan - Procedure cross reference.	Annual Update
Volume 38, Section 2	NA	Revised and corrected emergency facility locations on a redrawn map.	Annual Update
Volume 38, Section 3	NA	Added a Training Matrix	Annual Update
	NA	Added a procedure for the Police Chief	Annual Update



1989 PLAN/PROCEDURES UPDATE  
RESOLUTION TRACKING (ROADMAP)

AFFECTED SECTION	ISSUE	CORRECTIVE ACTION	SOURCE OF COMMENT
Volume 38, Section 4	NA	Removed monitoring/decontamination operations from this section and relocated in Volume 8, Section 5.	Annual Update
	NA	Reviewed and revised as necessary the monitoring/decontamination facility flow diagrams.	Annual Update

1989 PLAN/PROCEDURES UPDATE  
 RESOLUTION TRACKING (ROADMAP)

AFFECTED SECTION	ISSUE	CORRECTIVE ACTION	SOURCE OF COMMENT
Volume 39, Manchester Global Changes	NA	Changed terminology and reformatted.	Annual Update/Reformat
Volume 39, Section 1	NA	Added line of succession.	Annual Update
	NA	Added Emergency Preparedness Responsibility Matrix.	Annual Update
	NA	Added provision for 24-hour operations for protracted time period.	Annual Update
Volume 39, Section 1	NA	Added Plan - Procedure cross reference.	Annual Update
Volume 39, Section 2	Hillside Jr. High School should not be used as a backup monitoring/decontamination facility - another facility should be designated.	Revised to indicate that Hillside Jr. High School is Emergency Worker Monitoring/Decontamination Center only and that South Side Jr. High School is the backup monitoring/decontamination facility.	Hearing Commitment Rev. bars were inadvertently left off

1989 PLAN/PROCEDURES UPDATE  
 RESOLUTION TRACKING (ROADMAP)

AFFECTED SECTION	ISSUE	CORRECTIVE ACTION	SOURCE OF COMMENT
Volume 39, Section 2 (Continued)	The Emergency Worker Monitoring/Decontamination Center should be opened and staffed consistent with potential need for services.	Revised to indicate that the Emergency Worker Decontamination Center will be opened when the need is identified, will remain open as long as needed, and will be staffed commensurate with the number of emergency workers arriving for services.	Hearing Commitment
	NA	Revised and corrected emergency facility locations on a redrawn map.	Annual Update
	NA	Added a Training Matrix	Annual Update
	NA	Added a procedure for the Police Chief	Annual Update

1989 PLAN/PROCEDURES UPDATE  
RESOLUTION TRACKING (ROADMAP)

AFFECTED SECTION	ISSUE	CORRECTIVE ACTION	SOURCE OF COMMENT
Volume 39, Section 4	NA	Removed monitoring/decontamination operations from this section and relocated in Volume 8, Section 5.	Annual Update
	NA	Reviewed and revised as necessary the monitoring/decontamination facility flow diagrams.	Annual Update

1989 PLAN/PROCEDURES UPDATE  
RESOLUTION TRACKING (ROADMAP)

AFFECTED SECTION	ISSUE	CORRECTIVE ACTION	SOURCE OF COMMENT
Volume 40 Rochester Global Changes	NA	Changed terminology and reformatted.	Annual Update/Reformat
Volume 40, Section 1	NA	Added line of succession.	Annual Update
	NA	Added Emergency Preparedness Responsibility Matrix.	Annual Update
	NA	Added provision for 24-hour operations for protracted time period.	Annual Update
	NA	Added Plan - Procedure cross reference.	Annual Update
Volume 40, Section 2	NA	Revised and corrected emergency facility locations on a redrawn map.	Annual Update
Volume 40, Section 3	NA	Added a Training Matrix	Annual Update
	NA	Added a procedure for the Police Chief	Annual Update

1989 PLAN/PROCEDURES UPDATE  
RESOLUTION TRACKING (ROADMAP)

AFFECTED SECTION	ISSUE	CORRECTIVE ACTION	SOURCE OF COMMENT
Volume 40, Section 4	NA	Removed monitoring/decontamination operations from this section and relocated in Volume 8, Section 5.	Annual Update
	NA	Reviewed and revised as necessary the monitoring/decontamination facility flow diagrams.	Annual Update

1989 PLAN/PROCEDURES UPDATE  
RESOLUTION TRACKING (ROADMAP)

AFFECTED SECTION	ISSUE	CORRECTIVE ACTION	SOURCE OF COMMENT
Volume 41 Salem Global Changes	NA	Changed terminology and reformatted.	Annual Update/Reformat
Volume 41 Section 1	NA	Added line of succession.	Annual Update
	NA	Added Emergency Preparedness Responsibility Matrix.	Annual Update
	NA	Added provision for 24-hour operations for protracted time period.	Annual Update
	NA	Added Plan - Procedure cross reference.	Annual Update
Volume 41, Section 2	NA	Revised and corrected emergency facility locations on a redrawn map.	Annual Update
	NA	Added a Training Matrix.	Annual Update
Volume 41, Section 3	NA	Added a procedure for the Police Chief.	Annual Update

1989 PLAN/PROCEDURES UPDATE  
RESOLUTION TRACKING (ROADMAP)

AFFECTED SECTION	ISSUE	CORRECTIVE ACTION	SOURCE OF COMMENT
Volume 41, Section 4	NA	Removed monitoring/decontamination operations from this section and relocated in Volume 8, Section 5.	Annual Update
	NA	Reviewed and revised as necessary the monitoring/decontamination facility flow diagrams.	Annual Update



1989 PLAN/PROCEDURES UPDATE  
RESOLUTION TRACKING (ROADMAP)

AFFECTED SECTION	ISSUE	CORRECTIVE ACTION	SOURCE OF COMMENT
Volume 50	NA	Reviewed and updated LOA's	Annual Update