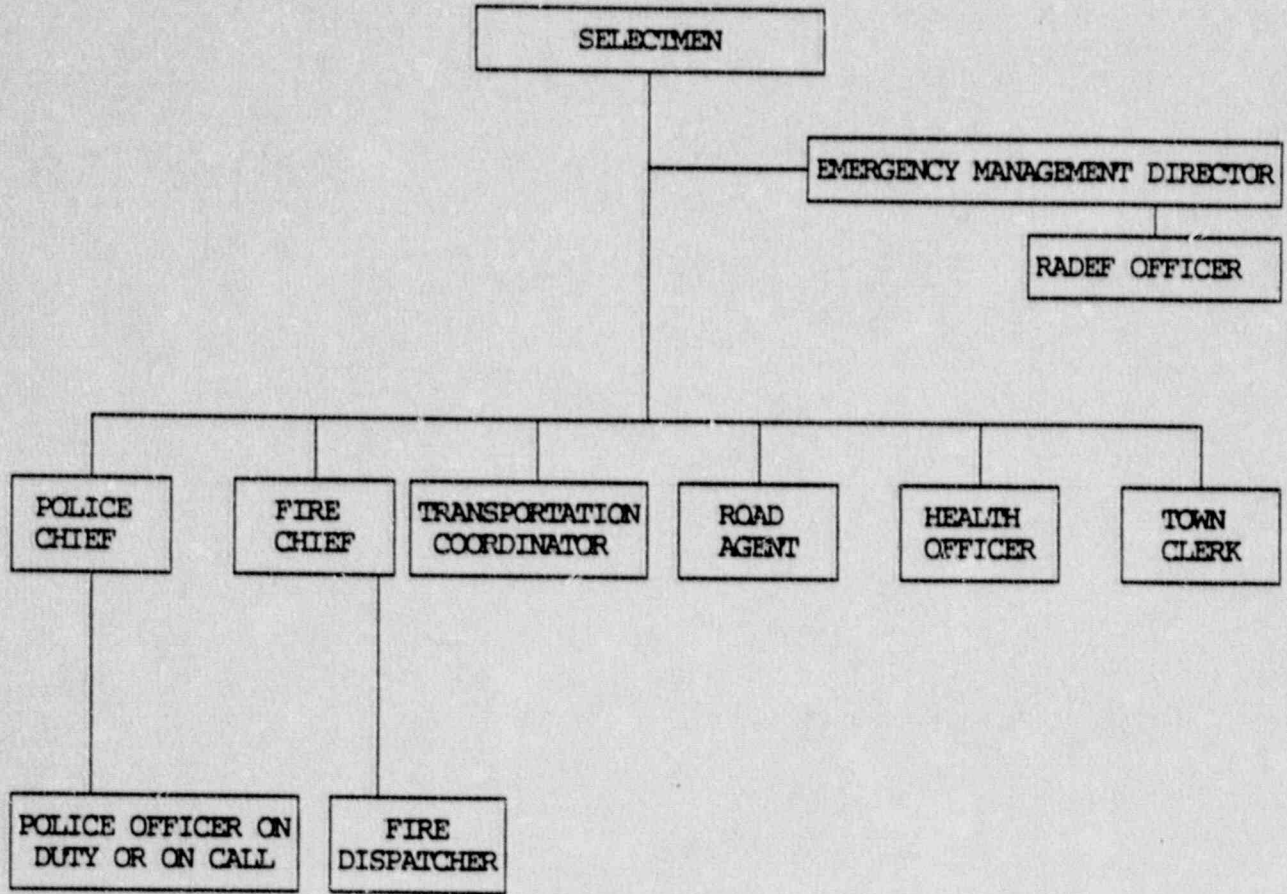


FIGURE 1.4-1

KENSINGTON EMERGENCY RESPONSE ORGANIZATION



## 1.5 Emergency Preparedness Responsibilities

Emergency preparedness responsibilities include those activities that should be carried out on a routine basis, prior to any emergency. This ensures that the Town is prepared to implement the emergency response functions in this volume and Volume 20. Section 3.0 describes the various preparedness responsibilities. Table 1.5-1, Emergency Preparedness Responsibility Matrix, identifies those persons within Kensington who have primary and support roles in emergency preparedness.

Emergency preparedness responsibilities of the Kensington School Principal are included in the School Special Facility Plan, and responsibilities for the School Superintendent (SAU 16) for Kensington are in the Exeter School Superintendent Special Facility Plan.

TABLE 1.5-1

KENSINGTON EMERGENCY PREPAREDNESS RESPONSIBILITY MATRIX

LEGEND

P = PRIMARY RESPONSIBILITY  
S = SUPPORT RESPONSIBILITY

	PREPAREDNESS ACTION																				
	ASSIGN RESPONSIBILITY	ASSESS MANPOWER NEEDS	ASSESS TRANSPORTATION NEEDS	ASSESS RESOURCE NEEDS	MAINTAIN EMERGENCY FACILITIES	MAINTAIN COMMUNICATION SYSTEM	REVIEW EVACUATION ROUTES	MAINTAIN PUBLIC ALERT SYSTEM	MAINTAIN SPECIAL NEEDS LIST	ASSIST REPP DOCUMENT CONTROL	ANNUAL REVIEW OF REPP	SCHEDULE/PERFORM REPP TRAINING	CONDUCT DRILLS AND EXERCISES	VERIFY PHONE LIST QUARTERLY	INVENTORY RAD EQUIP QUARTERLY	INVENTORY KI QUARTERLY	TEST COMMUNICATIONS MONTHLY	INVENTORY EMER EQUIP QUARTLY	PUBLIC EDUCATION / INFORMATION	MAINTAIN SUPPLIES / EDC FORMS	
KENSINGTON																					
SELECTMAN	P	S	S	S						S											
EMERG. MANAGEMENT DIRECTOR	S		P	S	S				P	P	P	P	P				P	P	S		
FIRE CHIEF	S				P	P		P	S	S			S				P				P
TRANSPORTATION COORDINATOR			S	P				P		S											
RADEF OFFICER										S				P	P		S				S
POLICE OFFICER ON DUTY/CALL										S											
POLICE CHIEF	S						P			S			S								
HEALTH OFFICER										S									S		
ROAD AGENT		S					S			S											
TOWN CLERK										S											S