

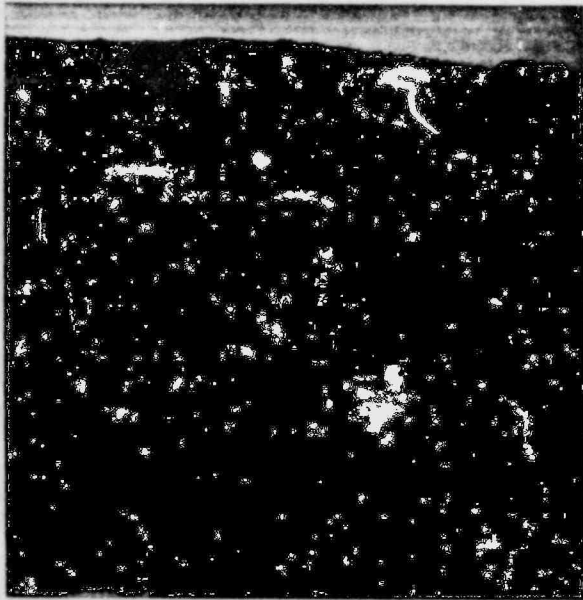


SPRAY POND #1 - FAULT ZONE 20  
VIEW SOUTH



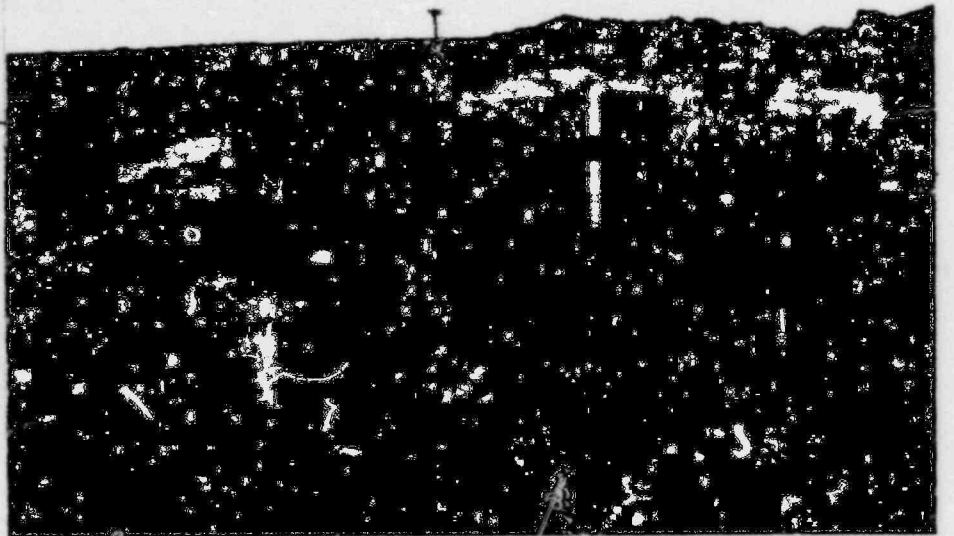
SPRAY POND #1  
FAULTS 21 and 22  
view south

Fault 21



A.B.N.P. SPRAY POND #1 7-23-80  
T.R. Contact / overburden  
Fault 22 - STA. E1135 + N1105  
View N.E.

Q  
TR



SPRAY POND #1 Overburden / Top of Rock Contact  
FAULT NUMBER 20.

800 910 0475