



Metropolitan Edison Company  
Post Office Box 480  
Middletown, Pennsylvania 17057  
717 944-4041

Writer's Direct Dial Number

August 29, 1980  
TLL 421

TMI Program Office  
Attn: J. T. Collins, Deputy Program Director  
U. S. Nuclear Regulatory Commission  
c/o Three Mile Island Nuclear Station  
Middletown, Pa. 17057

Dear Sir:

Three Mile Island Nuclear Station, Unit 2 (TMI-2)  
Operating License No. DPR-73  
Docket No. 50-320  
Organization Plan Revision 1A

As discussed in a phone conversation of August 25 between L. W. Harding (Met-Ed) and D. Brinkman, J. T. Collins, D. DiIanni and F. Allenspach of NRC, enclosed please find the revised pages to our submittal of August 12, 1980 (iLL 365).

Sincerely,

G. K. Hovey  
Director, TMI-2

GKH:LWH:hah

Enclosure

cc: B. J. Snyder  
D. Brinkman

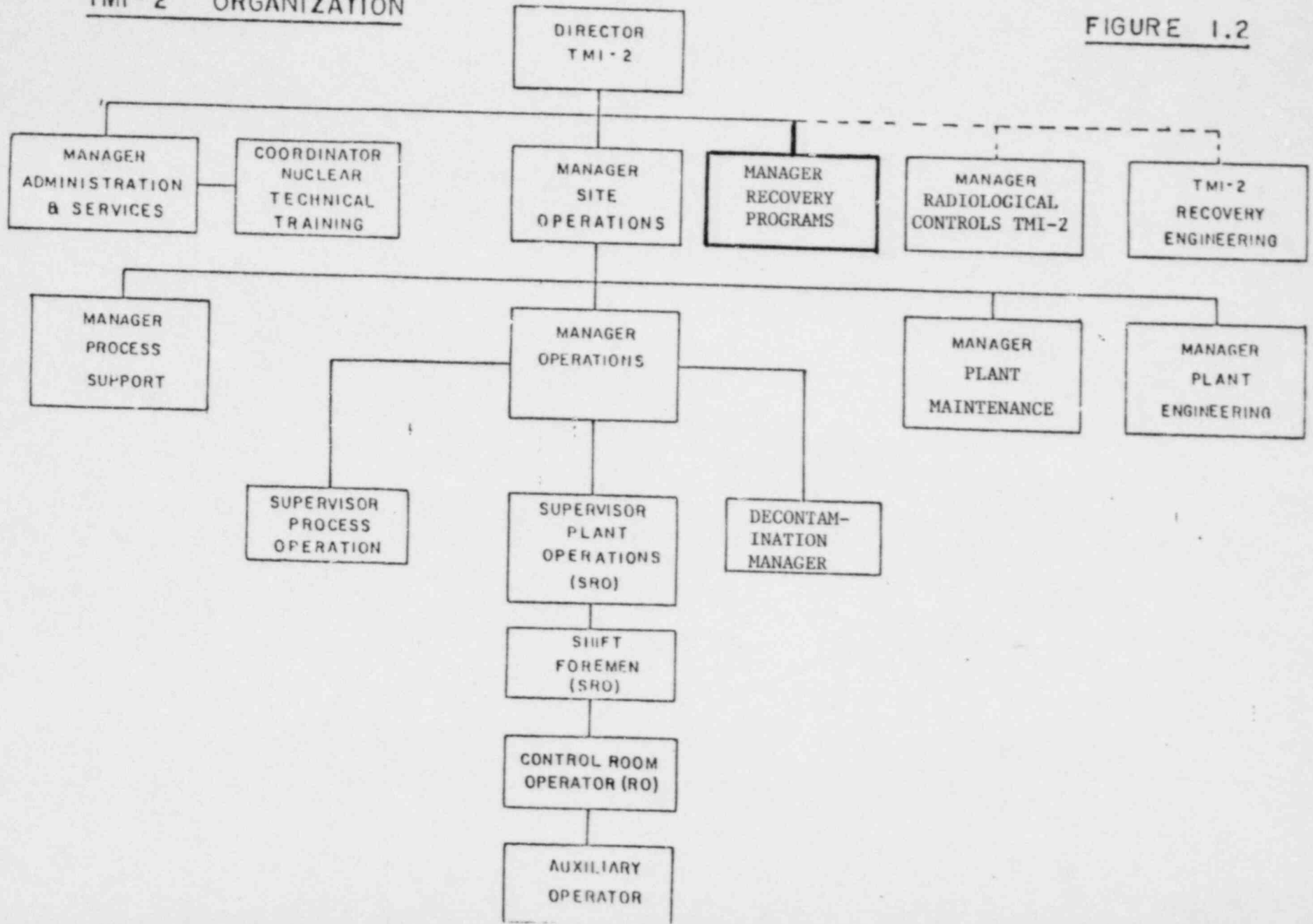
A001  
S  
1/1

8009090 556

2.2.3 Senior Vice President Met-Ed specified in Section 6.5 of the Technical Specifications is equivalent to the Chief Operating Executive, specified in this Organization Plan.

TMI-2 ORGANIZATION

FIGURE 1.2



The Manager Operations, in addition to the management of process operations for decontamination and the facility decontamination, is responsible for shift operations. He is assisted by the Supervisor of Plant Operations who provides direction for shift personnel. The minimum shift personnel is specified in Section 6.2 of the TMI-2 Technical Specifications.

The Manager Process Support provides planning and engineering support for the decontamination processes in use during the recovery of the plant.

The Manager Plant Engineering provides component and system operational evaluations as well as the required detail engineering support for the implementation of recovery systems. The Plant Engineering group is composed of nuclear, mechanical, electrical, chemical, and instrument and control engineers.

### 1.3 Organizational Changes

The following job positions have been deleted from the original Organization Plan and the new organization without loss of function or responsibility:

- Director Environment, Health and Safety--duties have been assumed by the Director Radiological and Environmental Control for environmental monitoring/engineering and by the Director Technical Functions for Licensing activities (See Attachment 1, pgs. 4 and 6).
- Director Reliability Engineering--duties have been assumed by the Director of Nuclear Assurance for quality assurance and nuclear safety assessment activities and the Director Operations and Safety Support for the System Lab (See Attachment 1, Page 5).
- Manager Management Services--duties have been assumed by the Director of Administration for planning and scheduling/cost estimating (See Attachment 1, Page 9).
- Manager Project Operations has been assumed completely by the Manager Recovery Programs.

The following functional areas have been changed from the original Organization Plan:

- Security--formally under the direction of the Manager Administration and Services at TMI-2, will now fall under corporate responsibility of the Director of Administration (See Attachment 1, Page 9).
- Site Operation Services--remains under the direction of the Site Operations Manager in the areas of Contractor Performance, Labor Relations and Planning and Estimating and has been deleted from the Organization Plan because of its indirect rather than direct technical support of the recovery effort.

#### 1.4 Safety Evaluation Justifying Change

The change describes the Nuclear Generation Group including the TMI-2 Organization and provides no loss of function performed under the current Section 6 of the Technical Specifications/Organization Plan. These changes increase and concentrate the technical resources and management strength being applied to all nuclear activities by the formation of the GPU Nuclear Group.

Furthermore, it has been determined that:

- The probability of occurrence or the consequences of an accident or malfunction of equipment important to safety previously evaluated in the safety analysis report is not increased.
- The possibility of an accident or malfunction of a different type than any evaluated previously in the safety analysis report is not increased.
- The margin of safety defined in the basis of any Technical Specification is not reduced.