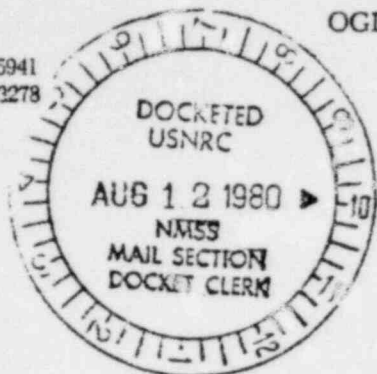


PDR 40-8745

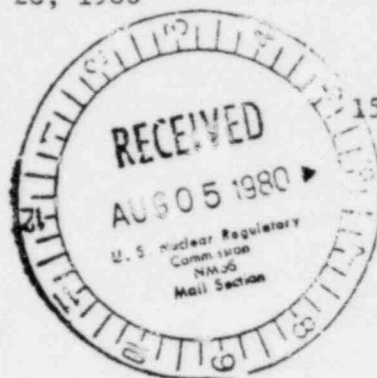
OGLE PETROLEUM INC.

TELEPHONE (805) 969-5941  
TELECOPIER (805) 969-3278  
TELEX No. 658-430

P.O. Box 5549  
559 SAN YSIDRO ROAD  
SANTA BARBARA, CALIFORNIA 93108



July 28, 1980



PLEASE DIRECT REPLY TO:

150 North Nichols Avenue  
Casper, Wyoming 82601  
(307) 266-6456

Mr. Ronald S. Kaufmann  
U.S. Nuclear Regulatory Commission  
Mail Stop 905-SS  
Washington, D.C. 20555

RE: Source Material License  
Application, Docket No.  
40-8745

SUBJECT: Safety Environmental Report  
Initial Survey Locations for  
In-Plant Radiological Monitoring

Dear Mr. Kaufmann:

Enclosed please find four copies of a drawing that shows the initial survey locations for the in-plant radiological monitoring program. As indicated in the Safety Environmental Report, Ogle Petroleum Inc. will establish the operational survey locations based on the results of the initial survey.

Please contact me if you desire additional information concerning the initial radiological survey.

Sincerely,

OGLE PETROLEUM INC.

*Glenn J. Catchpole*  
Glenn J. Catchpole  
Project Manager

GJC:jm

Enclosures

CC: Document Management  
Branch w/Enclosure

FREE EXEMPT 10073

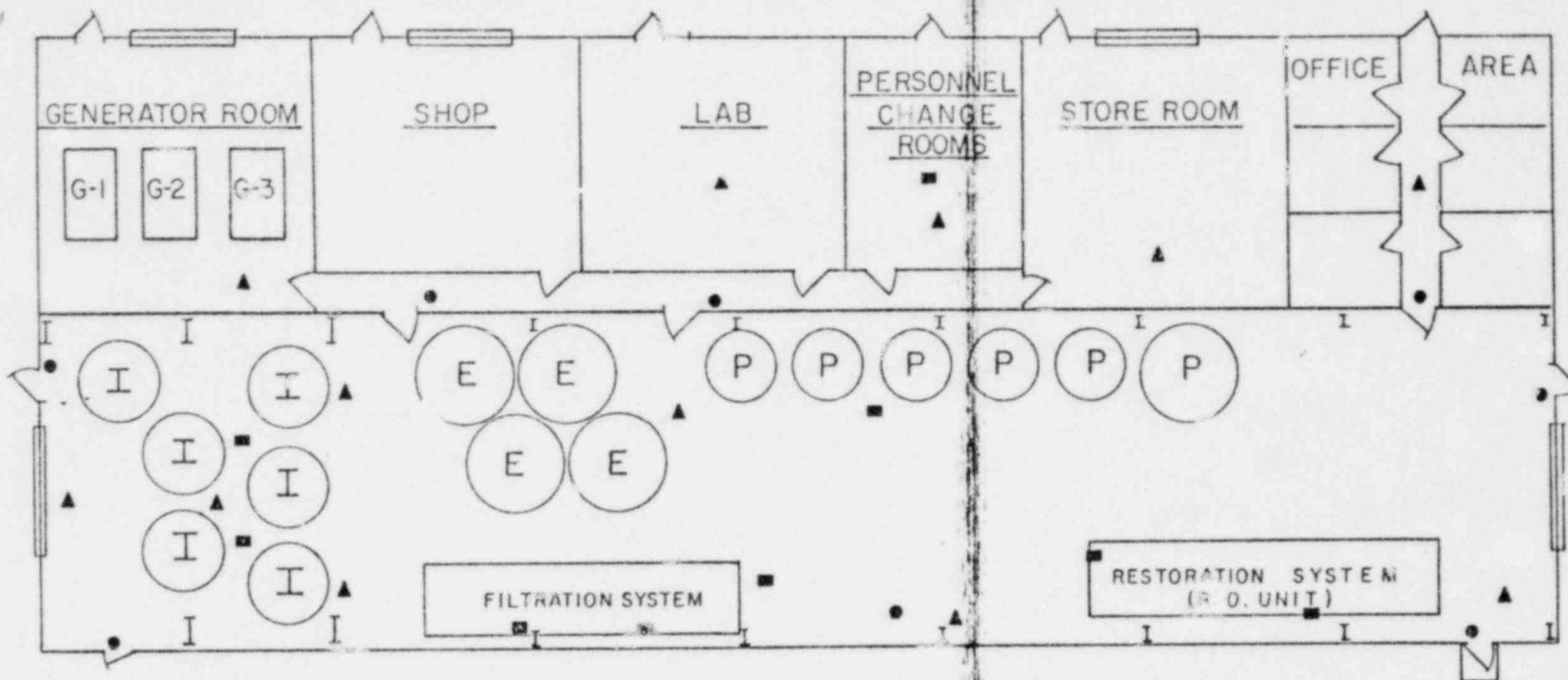
8009050362

DENVER







C

TUCSON

ADD'l info



- LEGEND -

-  I ION EXCHANGE COLUMNS
-  E ELUANT TANKS
-  P PRECIPITATION TANKS
-  GAMMA RADIATION EXPOSURE MEASUREMENT
-  ALPHA SURFACE CONTAMINATION SURVEYS
-  RADON GAS AND RADON PROGENY

SCALE: 1/16" = 1 FOOT

**OGLE PETROLEUM INC.**

INITIAL PLANT RADIOLOGICAL  
SURVEY LOCATIONS

DATE: 7/18/80

FIGURE