



ARKANSAS POWER & LIGHT COMPANY
POST OFFICE BOX 551 LITTLE ROCK, ARKANSAS 72203 (501) 371-4000

August 29, 1980

2-080-19

Mr. K. V. Seyfrit, Director
Office of Inspection & Enforcement
U. S. Nuclear Regulatory Comm.
Region IV
611 Ryan Plaza Drive, Suite 1000
Arlington, Texas 76011

Subject: Arkansas Nuclear One - Unit 2
Docket No. 50-368
License No. NPF-6
Licensee Event Report No.
80-050/03X-1
(File: 2-0520)

Gentlemen:

In accordance with Arkansas Nuclear One - Unit 2 Technical Specification 6.9.1.9.b, attached is the subject report concerning the Emergency Feed-water Pump (2P7A) overspeed trip during Mode 1 operation. This is an update to a previous report submitted June 27, 1980.

Very truly yours,

David C. Trimble
Manager, Licensing

DCT:GAC:ms

808

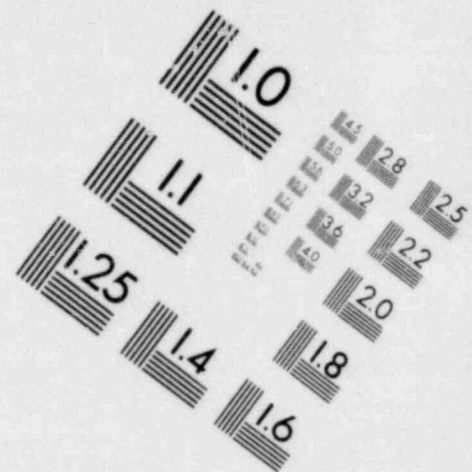
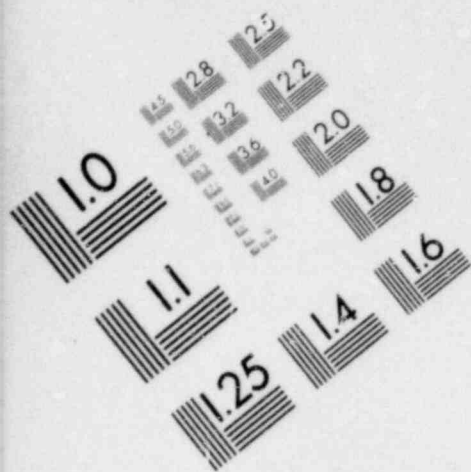
Attachment

cc: Mr. Victor Stello, Jr., Director
Office of Inspection and
Enforcement
U. S. Nuclear Regulatory Comm.
Washington, D. C. 20555

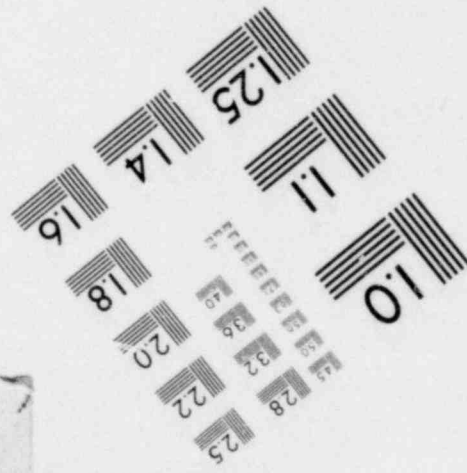
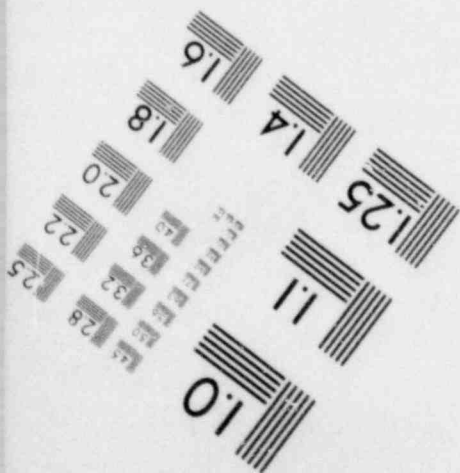
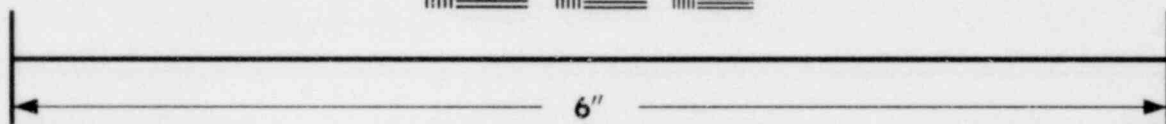
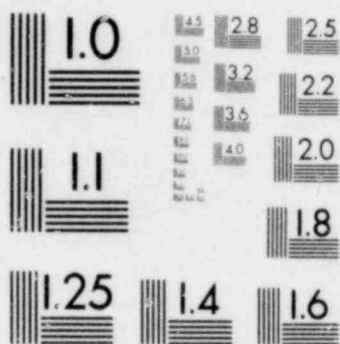
Mr. Norman M. Haller, Director
Office of Management and
Program Analysis
U. S. Nuclear Regulatory Comm.
Washington, D. C. 20555

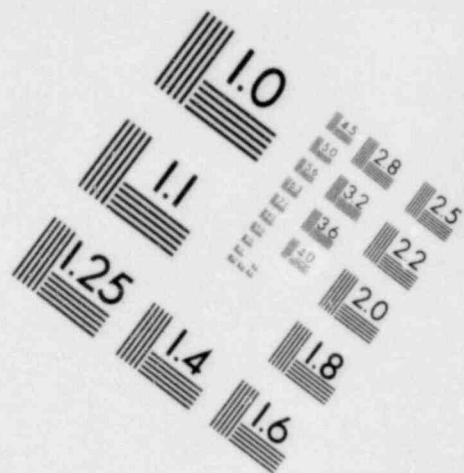
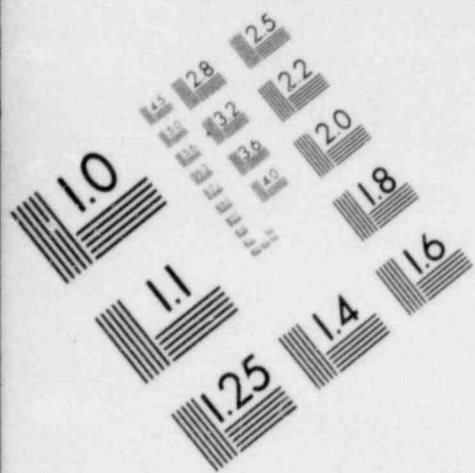
8009030410

MEMBER MIDDLE SOUTH UTILITIES SYSTEM 



**IMAGE EVALUATION
TEST TARGET (MT-3)**





**IMAGE EVALUATION
TEST TARGET (MT-3)**

