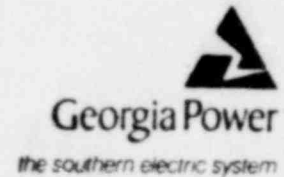


Georgia Power Company  
230 Peachtree Street  
Post Office Box 4545  
Atlanta, Georgia 30302  
Telephone 404 522-6060

TIC

W. A. Widner  
Vice President and General Manager  
Nuclear Generation

August 13, 1980



United States Nuclear Regulatory Commission  
Office of Inspection and Enforcement  
Region II - Suite 3100  
101 Marietta Street, NW  
Atlanta, Georgia 30303

REFERENCE:

RII: JPO

50-321/50-366

I&E Bulletin 80-17

ATTENTION: Mr. James P. O'Reilly

Gentlemen:

The following information is furnished in regard to I&E Bulletin 80-17 Supplement 1 Item A.1:

A walkdown of the scram discharge headers and associated vents and drains has revealed the following discrepancies of the as-built system with respect to the design:

1. Hatch Unit 1 South side header (sketch C11-SK-1) has a low point at the southwest corner. The northwest corner is 1 3/8" higher than the southwest corner.
2. Some sections of the vent and drain lines (2" diameter and less) have a slope less than the specified 1/8" per foot.

Discussion of Discrepancies

1. The design drawings for the south side scram discharge header require that the NW and SW corners be at the same level. Since the drain from the south side header is at the northwest corner, the as-built slope in the line results in a low point in the header. However, it should be noted that there is a large margin between the required and available scram discharge volumes.
2. As-built Hatch Unit 2 isometrics 2T45-F183 (vent F010B discharge), 2T45-F184 (vent discharge from F010A) and 2T45-F197 (drain F001 discharge) in certain areas show that the piping slopes are less than the 1/8"/ft. specified. In addition the slope of piping downstream of Hatch Unit 1 drain valve F011 could not be measured. However, it has been verified that the piping slopes in the proper direction and that there are no loop seals.

Q

U. S. Nuclear Regulatory Commission  
Office of Inspection and Enforcement  
Region II - Suite 3100  
August 13, 1980

Page Two

Description of the Vent and Drain System

The vent system is comprised of a dedicated vent and its associated isolation valve from the north and south headers. The vent lines are piped to open funnel type floor drain hubs. The hubs form part of the Clean Wastewater (CRW) floor drainage system which are directed to a CRW sump located in the corner room.

The drain line for Hatch Unit 1 is piped to an open funnel type floor drain hub of the CRW system. This is also directed to the CRW sump located in the corner room.

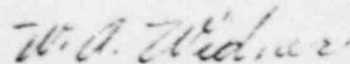
The drain line for Hatch Unit 2 is hard piped to a floor drain hub of the CRW system which is directed to the CRW sump located in the corner room.

The adequacy of the vent and drain system has been verified by actual testing performed by Georgia Power personnel.

Included as attachments to this letter are verified as-built drawings of the SDV.

Please contact this office if you have any questions or comments in this regard.

Very truly yours,

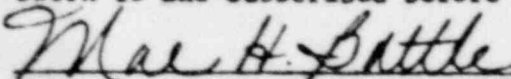


W. A. Widner

REB/mb

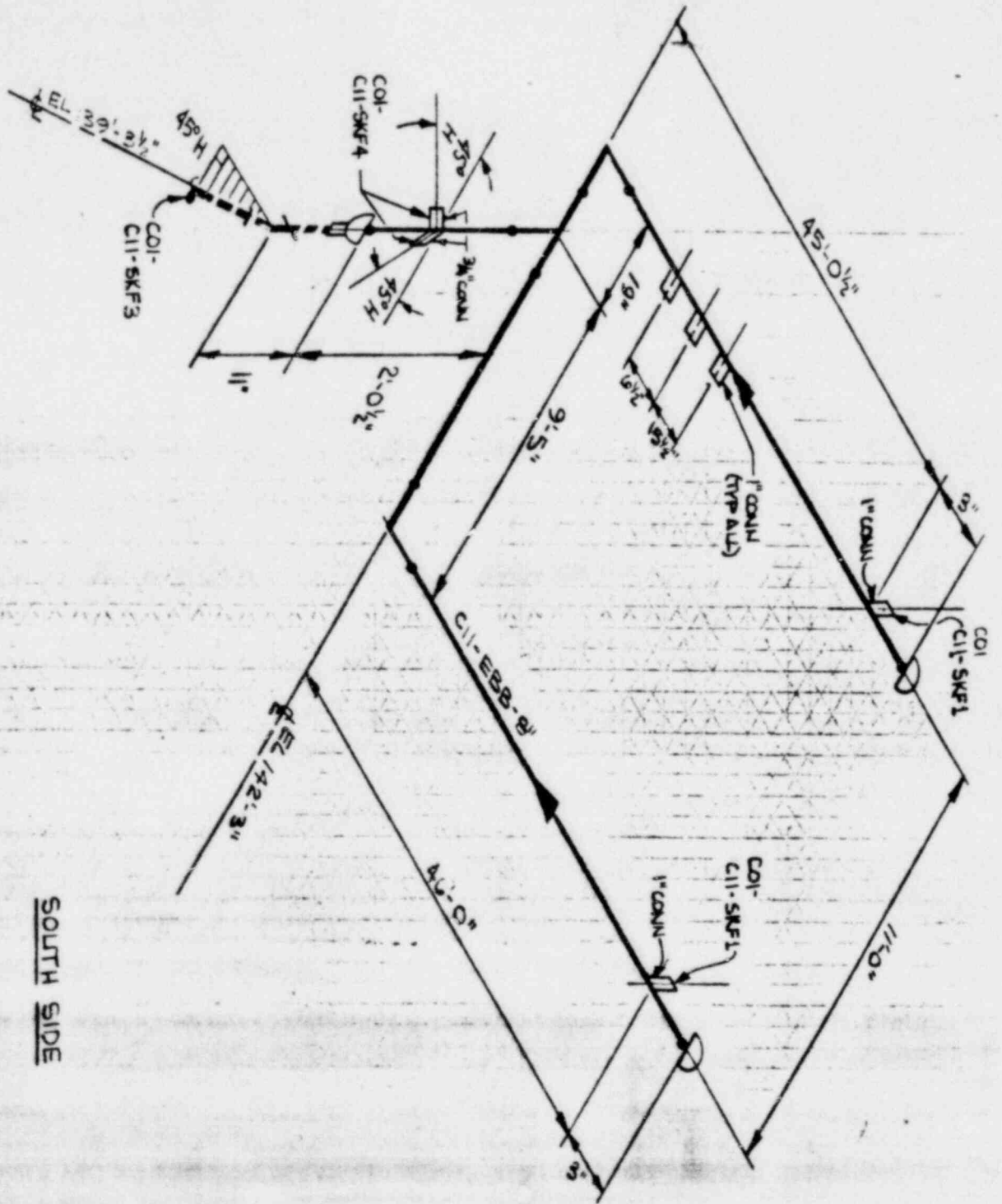
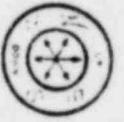
Attachments

Sworn to and subscribed before me this 13th day of August, 1980.



Notary Public Notary Public, Georgia, State at Large  
My Commission Expires Sept. 20, 1983

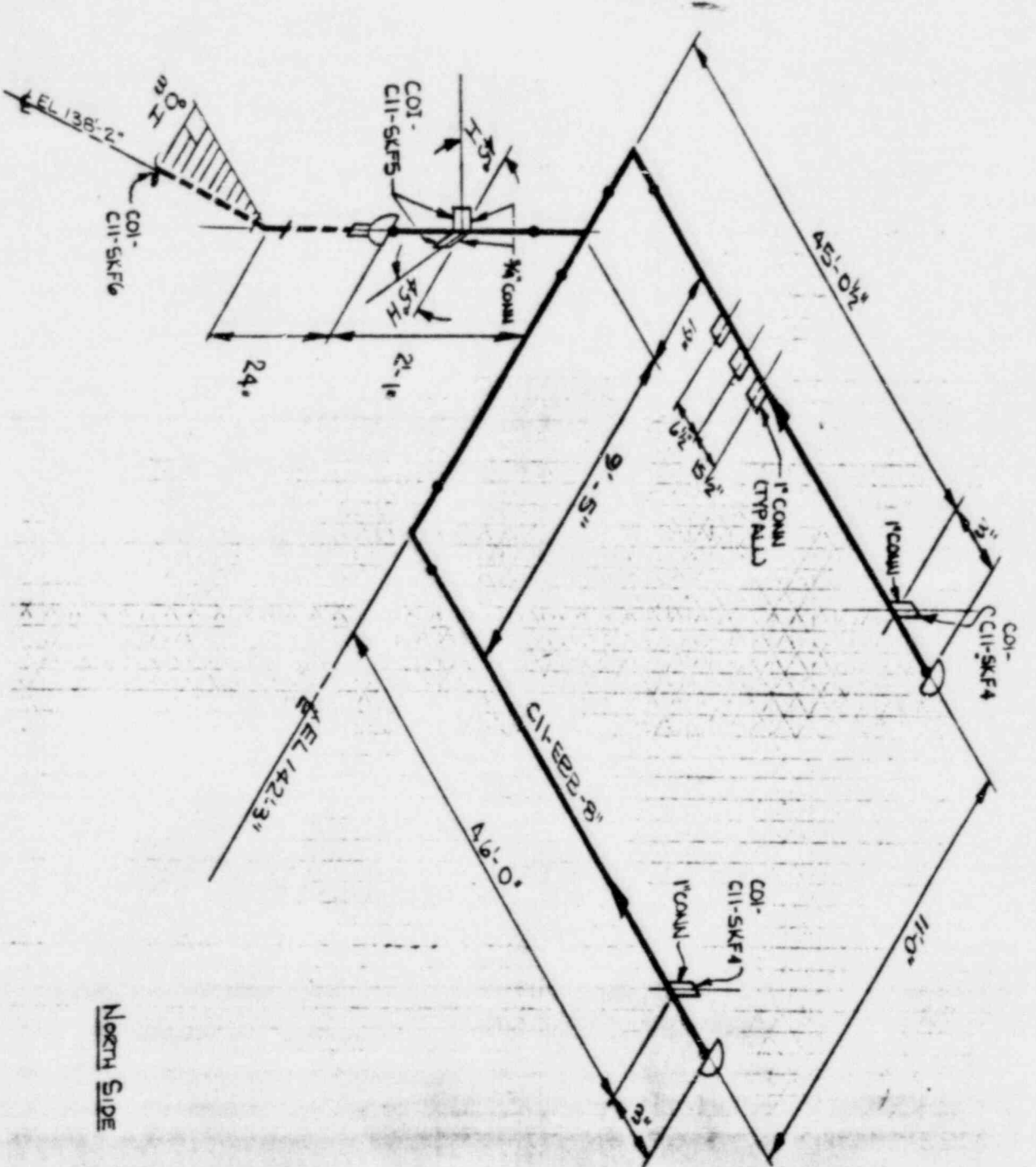
cc: Director of the Office of Inspection and Enforcement  
Director of the Division of Operating Reactors, Office of  
Nuclear Reactor Regulation



SOUTH SIDE

CONTRACTOR SHALL VERIFY ALL DIMENSIONS AND LOCATIONS OF ALL PIPING, VALVES AND FITTINGS, AND SHALL BE RESPONSIBLE FOR OBTAINING ALL NECESSARY PERMITS AND APPROVALS FROM ALL AFFECTED AGENCIES AND AUTHORITIES. THE CONTRACTOR SHALL BE RESPONSIBLE FOR OBTAINING ALL NECESSARY PERMITS AND APPROVALS FROM ALL AFFECTED AGENCIES AND AUTHORITIES. THE CONTRACTOR SHALL BE RESPONSIBLE FOR OBTAINING ALL NECESSARY PERMITS AND APPROVALS FROM ALL AFFECTED AGENCIES AND AUTHORITIES.

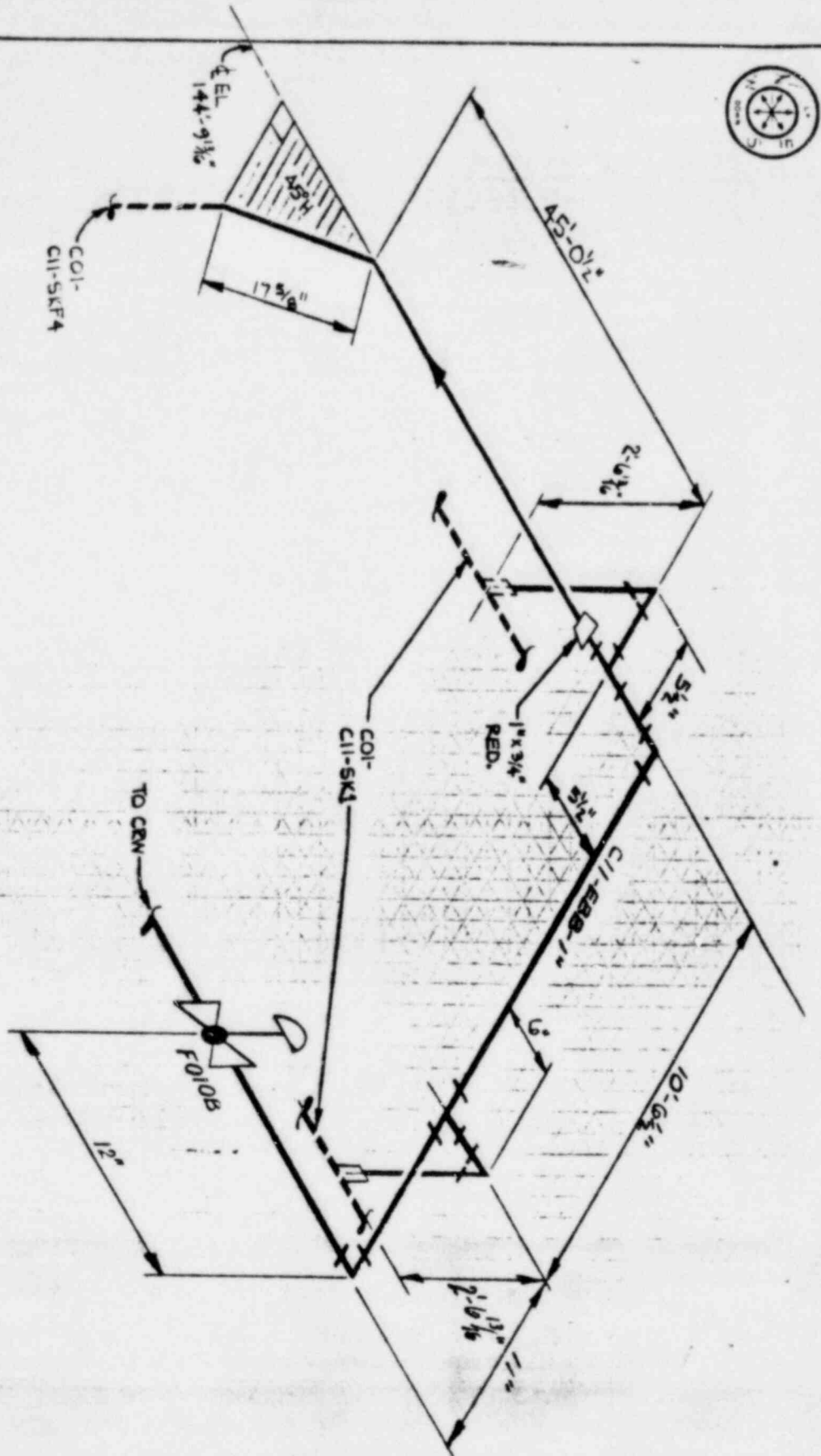
REV.		DATE	BY	DESCRIPTION	QA	CUSTOMER		JOB NO.	
						SYSTEM C11-SDV		150 C11-EBB-B'	
						REF DWGS			
						HT-002			
						DRAWN		CHK'D	
						JEP		APP'D	
						6-2-85			
						GEORGIA POWER COMPANY ISOMETRIC DRAWING			



NOTE: UNLESS OTHERWISE INDICATED ALL DIMENSIONS ARE IN FEET AND INCHES. DIMENSIONS INCLUDE ALLOWANCES FOR PIPE WEIGHT, SUPPORTS AND CONNECTIONS. DIMENSIONS INCLUDE ALLOWANCES FOR PIPE WEIGHT, SUPPORTS AND CONNECTIONS. DIMENSIONS ARE TO CENTERLINE UNLESS OTHERWISE INDICATED.

NORTH SIDE

SYSTEM C11-SDV REF. DWGS HT-002		JOB NO. 150 C11-SK2 0		
GEORGIA POWER COMPANY ISOMETRIC DRAWING		DRAWN: [ ] CHECKED: [ ] APP'D: [ ]		
REV.	DATE	BY	DESCRIPTION	QA



South Side

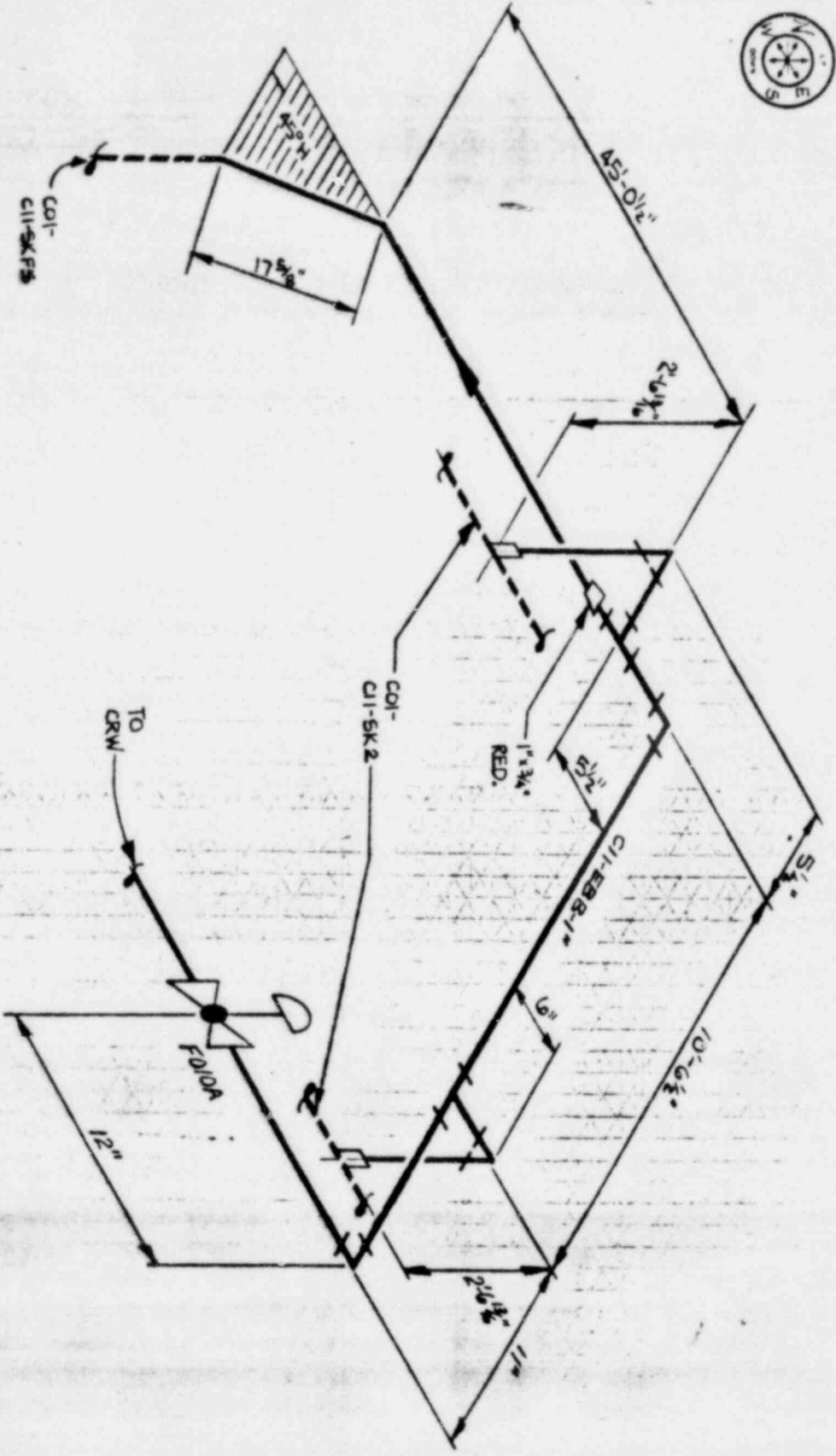
NOTE: THESE DIMENSIONS INDICATE THE LOCATION AND SIZE OF THE TRAY, FITTINGS AND SUPPORTS ONLY. THEY ARE NOT TO BE CONSIDERED AS A BASIS FOR THE DESIGN OF THE TRAY OR SUPPORTS. THE DESIGNER IS RESPONSIBLE FOR THE DESIGN OF THE TRAY AND SUPPORTS. THE DIMENSIONS SHOWN ARE FOR INFORMATION ONLY.

REV.		DATE	BY	DESCRIPTION	QA	CUSTOMER	SYSTEM	CII-SDV	JOB NO.	150	CII-5KFA	0
REF. DWGS.						HT-002	DRAWN		CHK'D	APPR'D	GEORGIA POWER COMPANY	
						JEP				ISOMETRIC DRAWING		

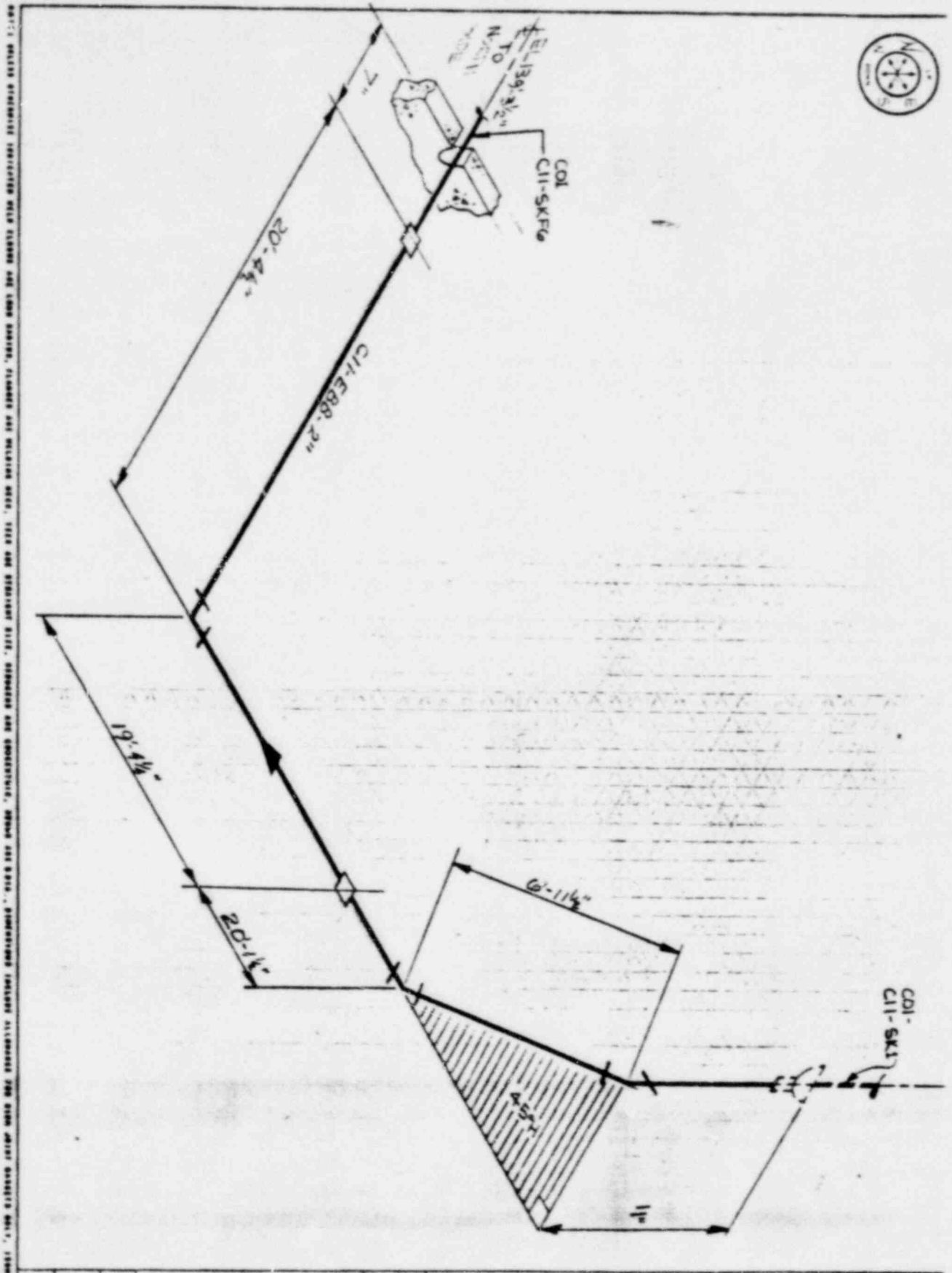
NOTES: UNLESS OTHERWISE INDICATED WITH DIMENSIONS AND CONNECTIONS, PLUMBING AND ELECTRICAL WORK, SHALL BE INSTALLED IN ACCORDANCE WITH THE LATEST EDITIONS OF THE NATIONAL ELECTRICAL CODE AND THE NATIONAL PLUMBING CODE. DIMENSIONS ARE GIVEN IN FEET AND INCHES. DIMENSIONS ARE GIVEN IN FEET AND INCHES. DIMENSIONS ARE GIVEN IN FEET AND INCHES.



NORTH SIDE



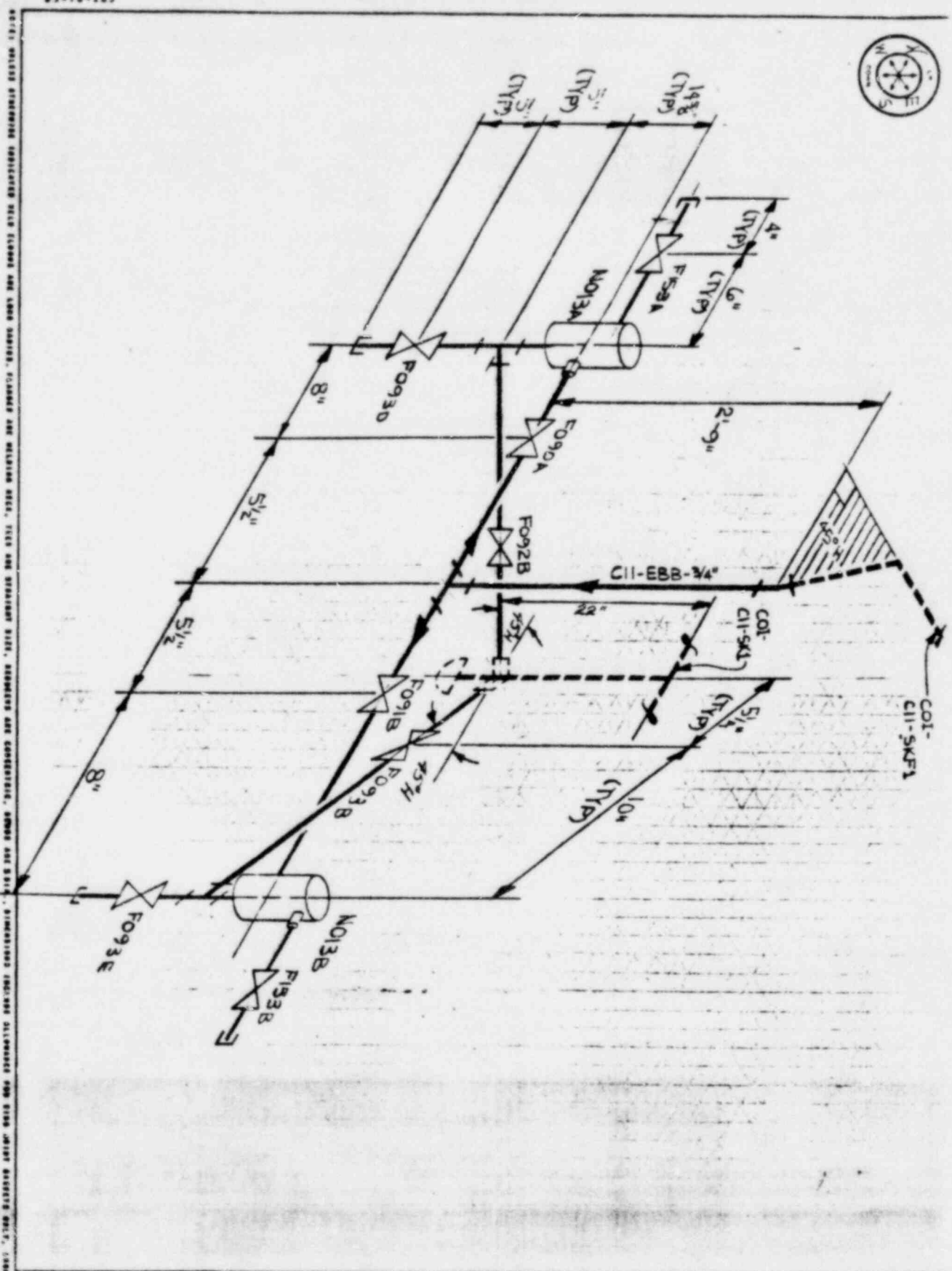
REV.		DATE	BY	DESCRIPTION	QA																																				
<table border="1" style="width:100%; border-collapse: collapse;"> <tr> <td colspan="3">CUSTOMER</td> <td colspan="3">JOB NO.</td> </tr> <tr> <td colspan="3">SYSTEM C11-SDV</td> <td colspan="3">150 C11- SKF2 0</td> </tr> <tr> <td colspan="3">REF DWGS.</td> <td colspan="3">DRAWN</td> </tr> <tr> <td colspan="3">WT-002</td> <td colspan="3">CHK'D</td> </tr> <tr> <td colspan="3"></td> <td colspan="3">APPR'D</td> </tr> <tr> <td colspan="3"></td> <td colspan="3">DATE</td> </tr> </table>						CUSTOMER			JOB NO.			SYSTEM C11-SDV			150 C11- SKF2 0			REF DWGS.			DRAWN			WT-002			CHK'D						APPR'D						DATE		
CUSTOMER			JOB NO.																																						
SYSTEM C11-SDV			150 C11- SKF2 0																																						
REF DWGS.			DRAWN																																						
WT-002			CHK'D																																						
			APPR'D																																						
			DATE																																						
<b>GEORGIA POWER COMPANY</b> ISOMETRIC DRAWING																																									



ALL DIMENSIONS UNLESS OTHERWISE SPECIFIED SHALL BE IN INCHES AND FRACTIONS THEREOF. DIMENSIONS ARE MEASURED FROM FACE UNLESS OTHERWISE SPECIFIED. DIMENSIONS ARE GIVEN TO CENTERLINE UNLESS OTHERWISE SPECIFIED. DIMENSIONS ARE GIVEN TO CENTERLINE UNLESS OTHERWISE SPECIFIED. DIMENSIONS ARE GIVEN TO CENTERLINE UNLESS OTHERWISE SPECIFIED. DIMENSIONS ARE GIVEN TO CENTERLINE UNLESS OTHERWISE SPECIFIED.

CII SYSTEM		JOB NO. 150 CII-EXF2	
SYSTEM CII-SDV			
REF DWG HT-002			
REV.	DATE	BY	DESCRIPTION

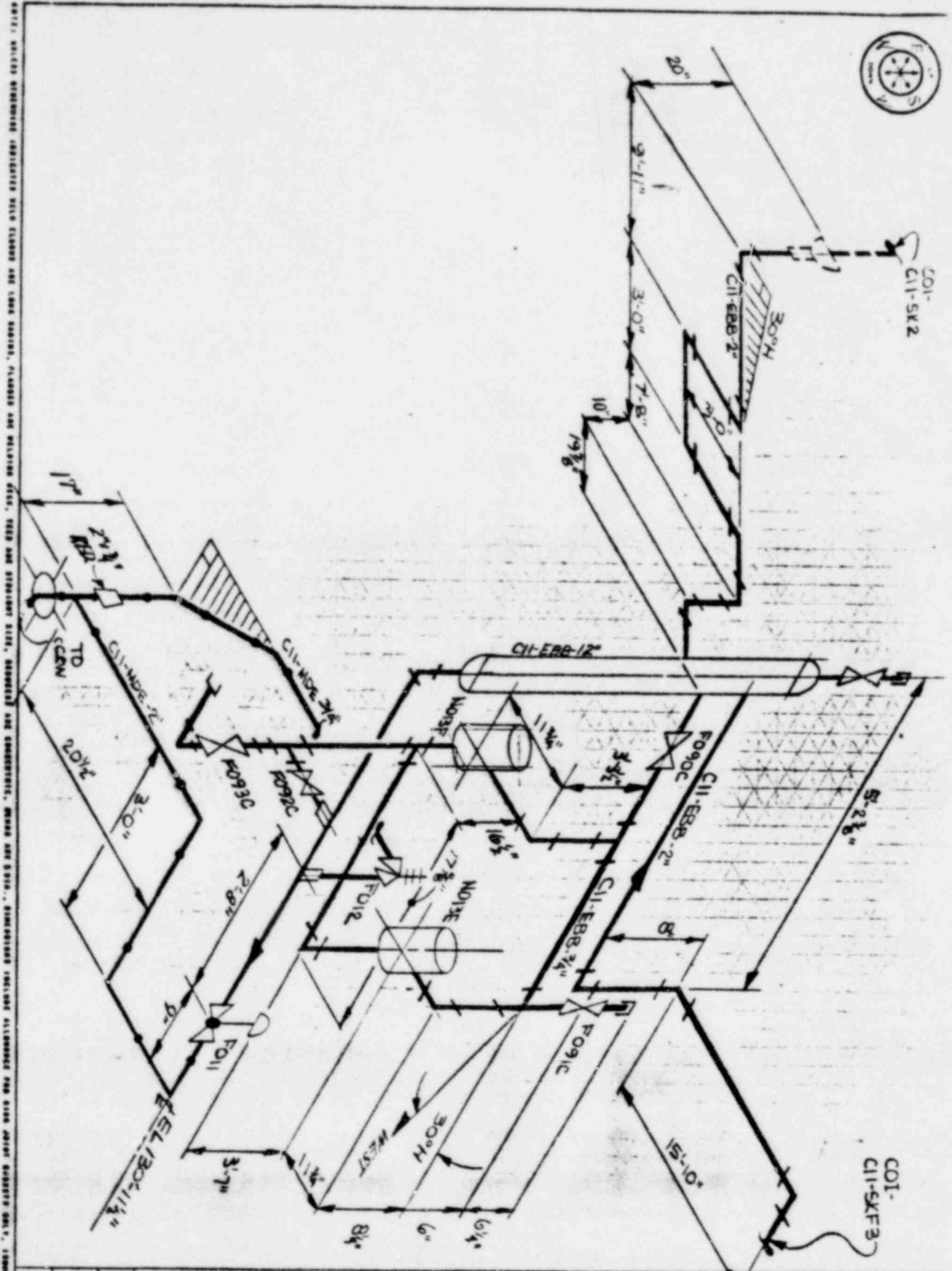
GEORGE A. POWELL COMPANY  
 ISOMETRIC DRAWING



AS SHOWN UNLESS SPECIFICALLY NOTED OTHERWISE ALL DIMENSIONS ARE IN INCHES OR FEET AND DECIMALS THEREOF. THE USER OF THIS DRAWING SHALL BE RESPONSIBLE FOR VERIFYING THE ACCURACY OF THE INFORMATION SHOWN ON THIS DRAWING AND FOR OBTAINING NECESSARY PERMISSIONS FROM THE PROPER AUTHORITY BEFORE MAKING ANY CHANGES TO THIS DRAWING. THE COMPANY ASSUMES NO LIABILITY FOR ANY ERRORS OR OMISSIONS.

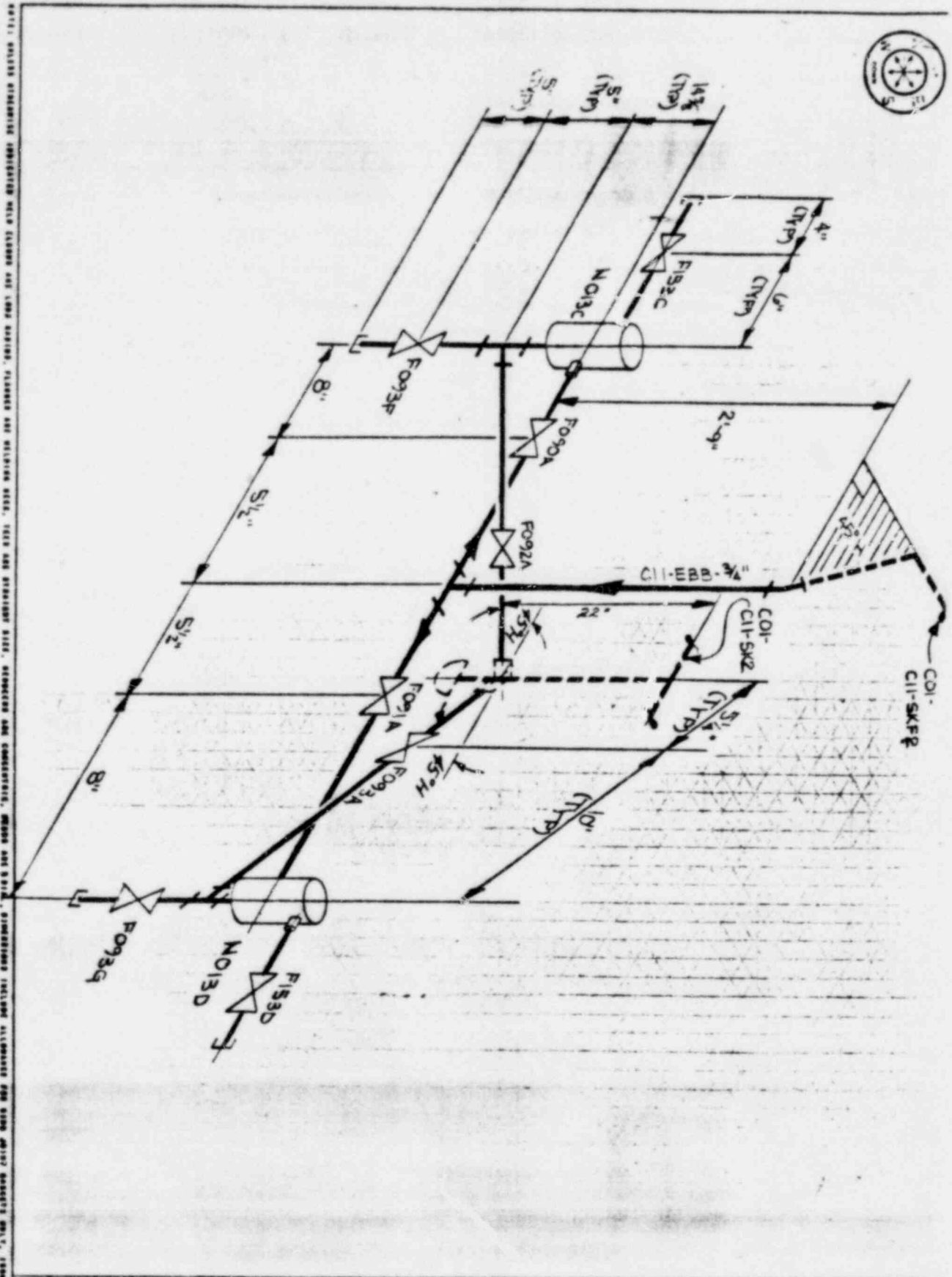
REV		DATE	BY	DESCRIPTION	QA	CUSTOMER: SYSTEM CII-SDV	JOB NO. 150-CII-SKF-4-0									
REF DWGS: HT-002						<table border="1"> <tr> <td>DRAWN</td> <td>CHEK'D</td> <td>APPRO'B</td> </tr> <tr> <td>JSD</td> <td></td> <td></td> </tr> <tr> <td>12-5-4</td> <td></td> <td></td> </tr> </table>	DRAWN	CHEK'D	APPRO'B	JSD			12-5-4			<b>GEORGIA POWER COMPANY</b> ISOMETRIC DRAWING
DRAWN	CHEK'D	APPRO'B														
JSD																
12-5-4																





NOTES: ALL DIMENSIONS INDICATED WITH DIMENSION LINES AND DIMENSION VALUES, UNLESS OTHERWISE SPECIFIED, ARE TO BE CONSIDERED AS APPROXIMATE. DIMENSIONS SHOWN ARE FOR INFORMATION ONLY. DIMENSIONS INDICATED WITH DIMENSION LINES AND DIMENSION VALUES, UNLESS OTHERWISE SPECIFIED, ARE TO BE CONSIDERED AS APPROXIMATE. DIMENSIONS SHOWN ARE FOR INFORMATION ONLY. DIMENSIONS INDICATED WITH DIMENSION LINES AND DIMENSION VALUES, UNLESS OTHERWISE SPECIFIED, ARE TO BE CONSIDERED AS APPROXIMATE. DIMENSIONS SHOWN ARE FOR INFORMATION ONLY.

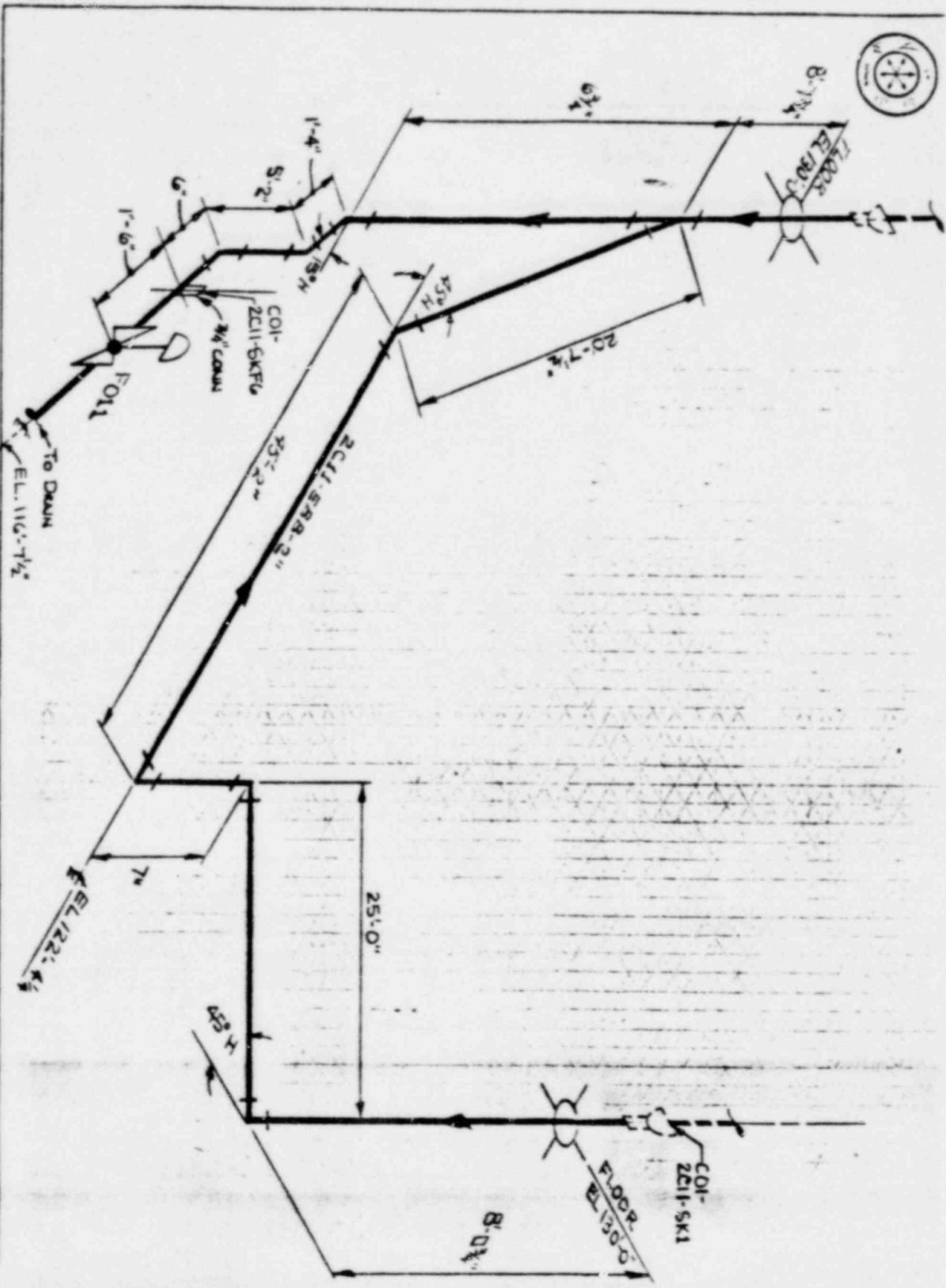
REV.		DATE	BY	DESCRIPTION	QA	CUSTOMER		JOB NO.		156111	
						SYSTEM C11-SDV				GEOGRAPHIC COMPANY	
						REF. DWGS				ISOMETRIC DRAWING	
						HT-002					
						DRAWN		CHK'D		APPR'D	



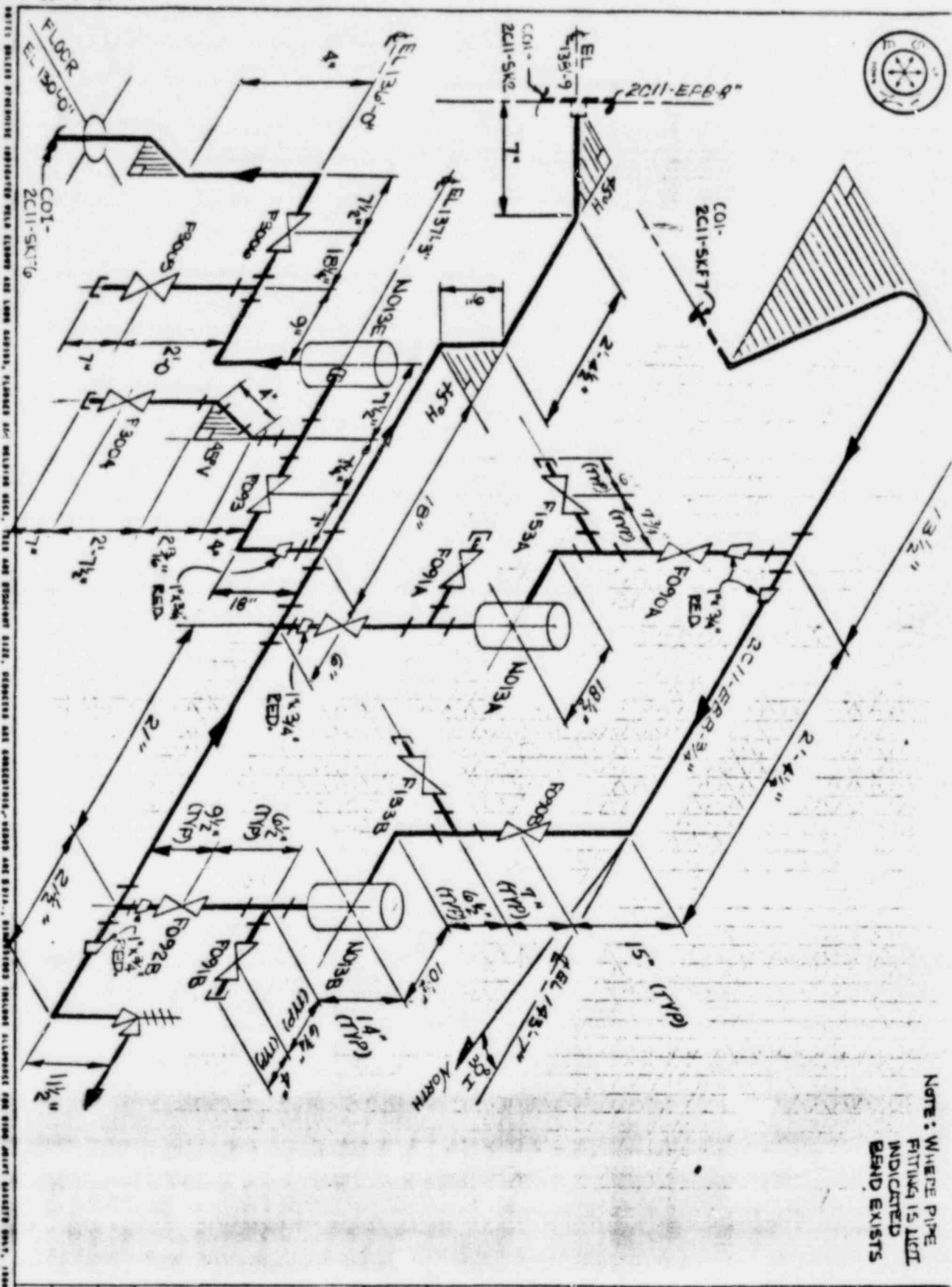
NOTE: UNLESS OTHERWISE INDICATED WITH DIMENSIONS, STANDARD AND UNIFORM PIPING, FITTINGS AND CONNECTIONS SHALL BE AS SHOWN ON SHEETS. DIMENSIONS INCLUDE ALL THICKNESSES AND SPACINGS. DIMENSIONS ARE IN INCHES. DIMENSIONS ARE TO CENTER UNLESS OTHERWISE NOTED.

REV		DATE	BY	DESCRIPTION	QA	CY NUMBER	SYSTEM	CII-SDV	JOB NO.	50	50	50
						REF DWGS	HT-002	GEORGE A. POWER COMPANY		ISOMETRIC DRAWING		

NOTE: DIMENSIONS INDICATED WITH STARS ARE LONG HANDS, DIMENSIONS AND NOTATION WITHIN, TOP AND BOTTOM SIDES, RECEPTS AND CONNECTIONS, MOUNT AND SIZES, DIMENSIONS INCLUDE ALLOWANCE FOR PIPE WEIGHT WEIGHTS ONLY, DIMENSIONS ARE TO CENTER.



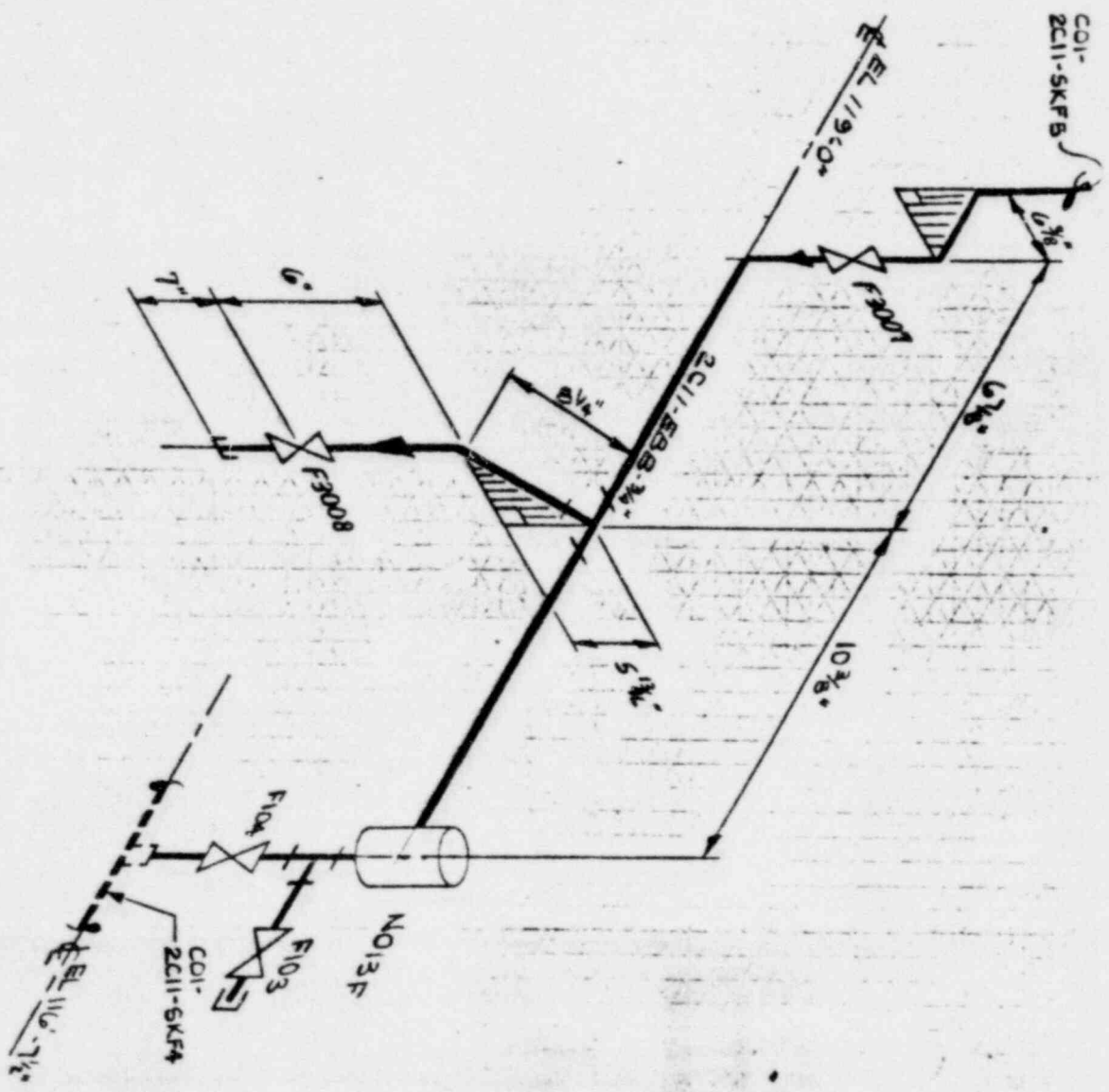
				SYSTEM <b>2C11-SDV</b>		JOB NO.		2C11 5KFK6	
				REF DWG: 2C11-5K1 HT-2009				GEORGIA POWER COMPANY ISOMETRIC DRAWING	
REV	DATE	BY	DESCRIPTION	QA	DESIGN	CHK'D	APP'D		
					JES				



REV. DATE BY		DESCRIPTION		GA	CUSTOMER SYSTEM 2C11-SDV REF. DRWG. HT-2003		JOB NO. 150-825		1:0	
					DRAWN JED		CHECKED [Signature]		APPROVED [Signature]	
GEORGIA POWER COMPANY ISOMETRIC DRAWING										

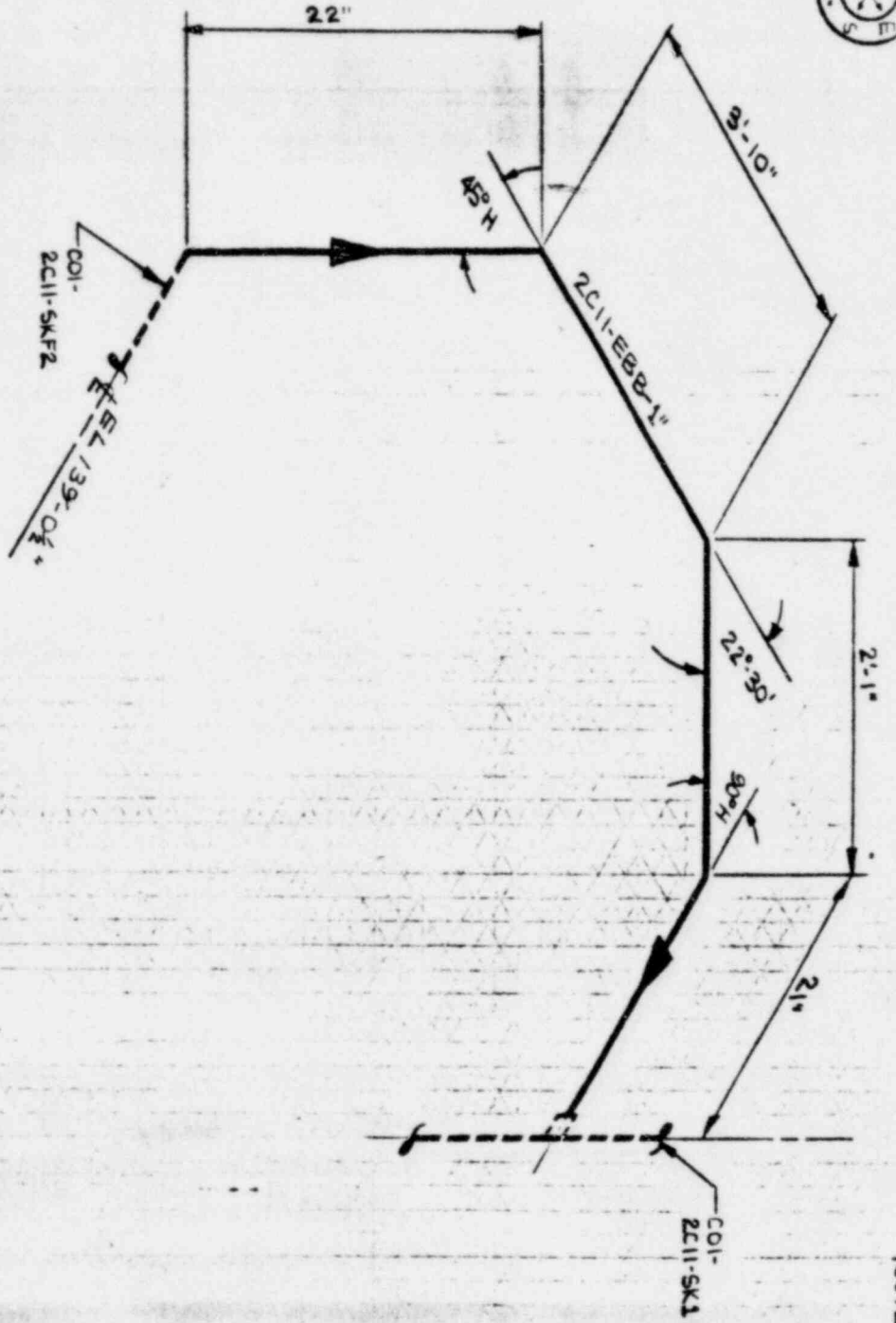
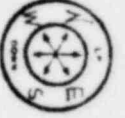


NOTE: WHERE PIPE  
FITTINGS NOT  
INDICATED  
BEND EXISTS.



2011: UNLESS OTHERWISE INDICATED THIS DRAWING AND LOGS ARE TO BE USED AS A GUIDE ONLY. STANDARDS AND RELIEF DEVS., TEST AND STRAINING DEVS., SUPPORTS AND CONNECTIONS, SIZES AND QTY'S, DIMENSIONS INCLUDE ALL UNLESS OTHERWISE NOTED. DIMENSIONS ARE TO CENTER UNLESS OTHERWISE NOTED.

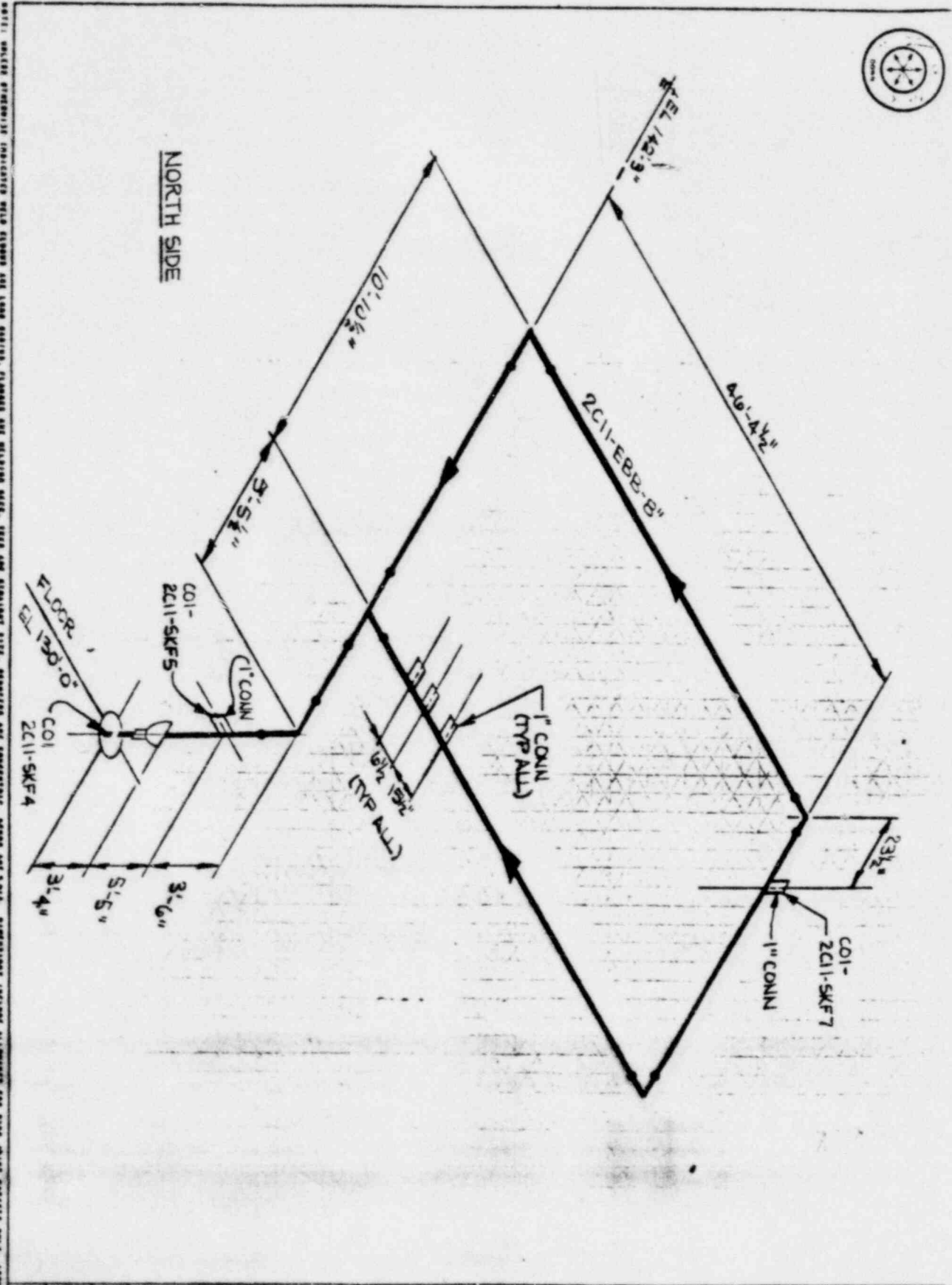
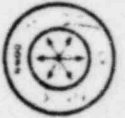
REV.		DATE	BY	DESCRIPTION	QA	CUSTOMER SYSTEM 2C11-SDV REF DWS HT-2009		JOB NO. 150 2C11- SKFB 0	
						DRAWN JEP		CHECKED APPR'D GEORGIA POWER COMPANY ISOMETRIC DRAWING	



NOTE: DIMENSIONS INDICATED REPRESENTS MEASUREMENTS FROM FACE OF FLANGES AND BOLTING AREAS, TIE-IN AND STATIONARY FITS, APPROPRIATE AND CONSIDERED, DRAWING AND S.D.P., DIMENSIONS INCLUDE ALLOWANCES FOR PIPE JOINT CASSETS ONLY, ISOMETRIC DRAWING ONLY TO BE USED.

NOTE: WHERE PIPE FITTING IS NOT INDICATED BAND EXISTS.

REV.		DATE		BY	DESCRIPTION	QA	CUSTOMER SYSTEM 2C11-SDV REF DWGS 2C11-5KF2 HT-2009			JOB NO. 150-511- 511-2		GEORGIA POWER COMPANY ISOMETRIC DRAWING
------	--	------	--	----	-------------	----	---	--	--	---------------------------	--	--



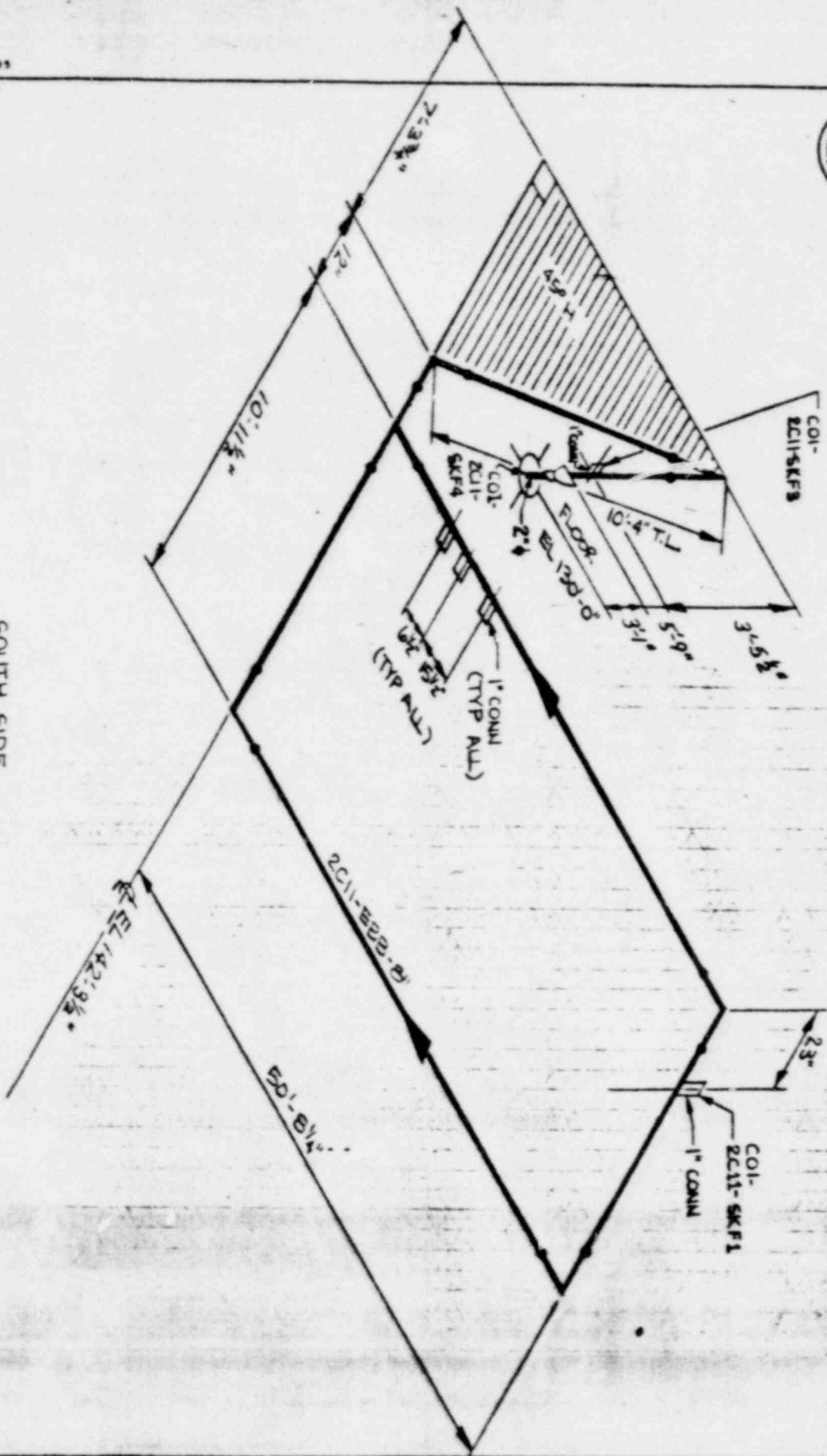
REVISIONS: INDICATED WITH STROKE AND DATE CHANGES. DIMENSIONS ARE GIVEN IN FEET AND INCHES. ALL DIMENSIONS ARE TO FACE UNLESS OTHERWISE NOTED. THE CONTRACTOR SHALL BE RESPONSIBLE FOR OBTAINING ALL NECESSARY PERMITS AND APPROVALS. THE CONTRACTOR SHALL BE RESPONSIBLE FOR OBTAINING ALL NECESSARY PERMITS AND APPROVALS.

REV	DATE	BY	DESCRIPTION	QA	CUSTOMER	CHECKED	APP'D
					SYSTEM 2C11-6DV		
					REF DRG HT-2003		
					JOB NO.	150-5K2	
					GEORGIA POWER COMPANY		
					ISOMETRIC DRAWING		

85-70-185



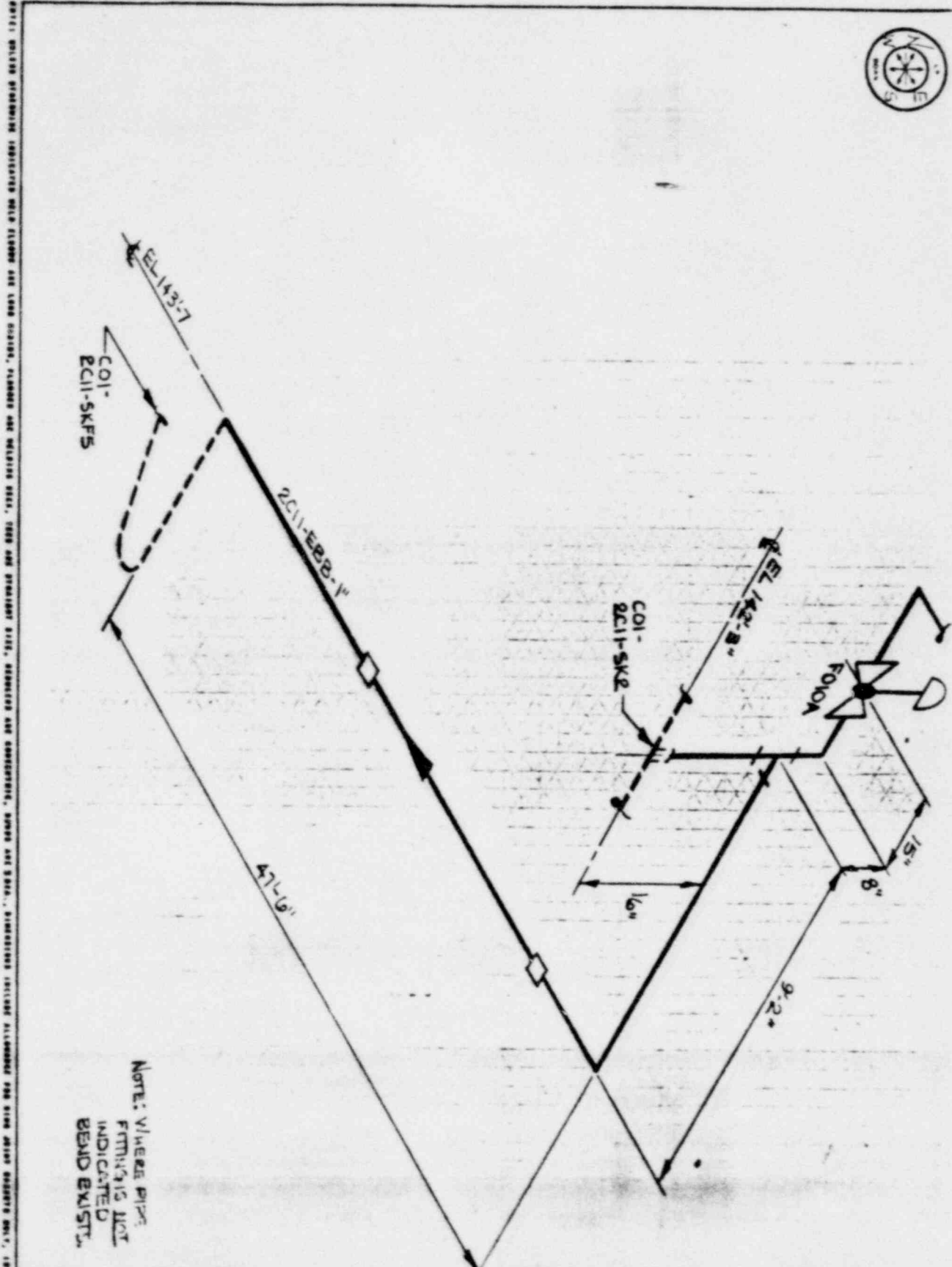
SOUTH SIDE



NOTES: BRUSH CONTAMINATION PROTECTION WITH CLEANING AND COOL DOWN, FLANGES AND WELDS ARE TO BE CLEANED AND STRIPPED OF OIL, GREASE AND CONDENSATE, WASH AND BLOW DRY. DIMENSIONS INCLUDE ALLOWANCE FOR PIPE WEIGHT AND SUPPORTS ONLY. DIMENSIONS NOT TO SCALE.

REV		DATE	BY	DESCRIPTION	QA	CUSTOMER	SYSTEM	JOB NO.	ISO	2C11- B22-B	0
						HT-2009			GEORGIA POWER COMPANY		
									ISOMETRIC DRAWING		

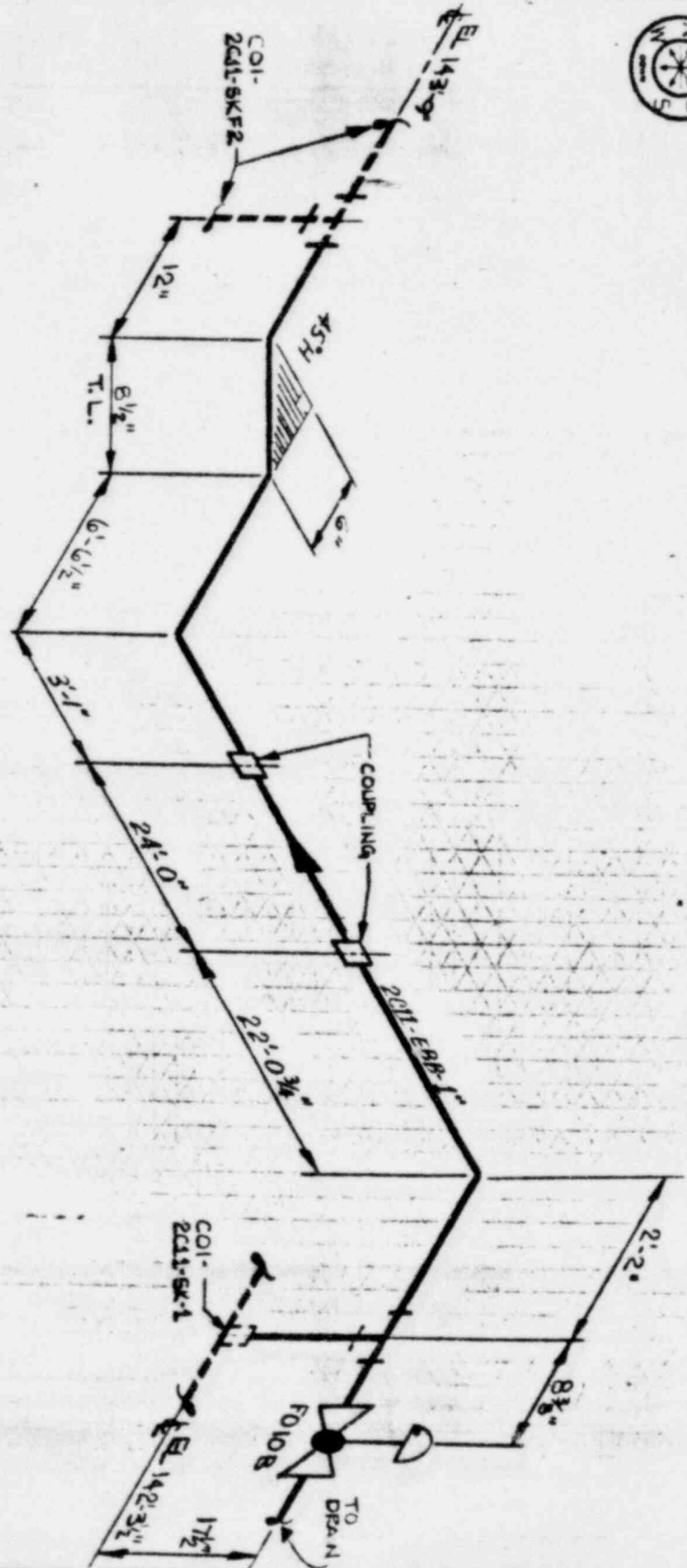




NOTE: WHERE PIPE  
FITTINGS IS NOT  
INDICATED  
BEND EXISTS.

PROJECT: GEORGIA POWER CO. PROJECTS INDICATED WITH EIGHT DIGIT SYSTEM AND FOUR DIGIT, PLUMBING AND MECHANICAL, COND AND STRAIGHT SIZE, CONNECTIONS AND CONNECTIONS, SPANS AND SIZES, DIMENSIONS INCLUDING ALLOWANCE FOR PIPE AND JOINT WEIGHTS ONLY, DIMENSIONS MAY BE MADE.

REV		DATE	BY	DESCRIPTION	QA	CUSTOMER	SYSTEM	2C11-SDV	JOB NO.	150	2C11- SKFB	0
						REF DWS	HT-2009					
						DRAWN	CHK'D	APP'D	GEORGIA POWER CORP ISOMETRIC DRAWING			
						DESIGN						



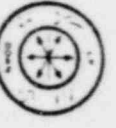
NOTE: WHERE PIPE FITTING IS NOT INDICATED BEND EXISTS.

ALL DIMENSIONS UNLESS OTHERWISE INDICATED ARE IN FEET AND INCHES. DIMENSIONS INCLUDE ALLOWANCE FOR PIPE WEIGHT AND WEIGHT OF FITTINGS. DIMENSIONS INCLUDE ALLOWANCE FOR PIPE WEIGHT AND WEIGHT OF FITTINGS. DIMENSIONS INCLUDE ALLOWANCE FOR PIPE WEIGHT AND WEIGHT OF FITTINGS.

REV.	DATE	BY	DESCRIPTION	QA

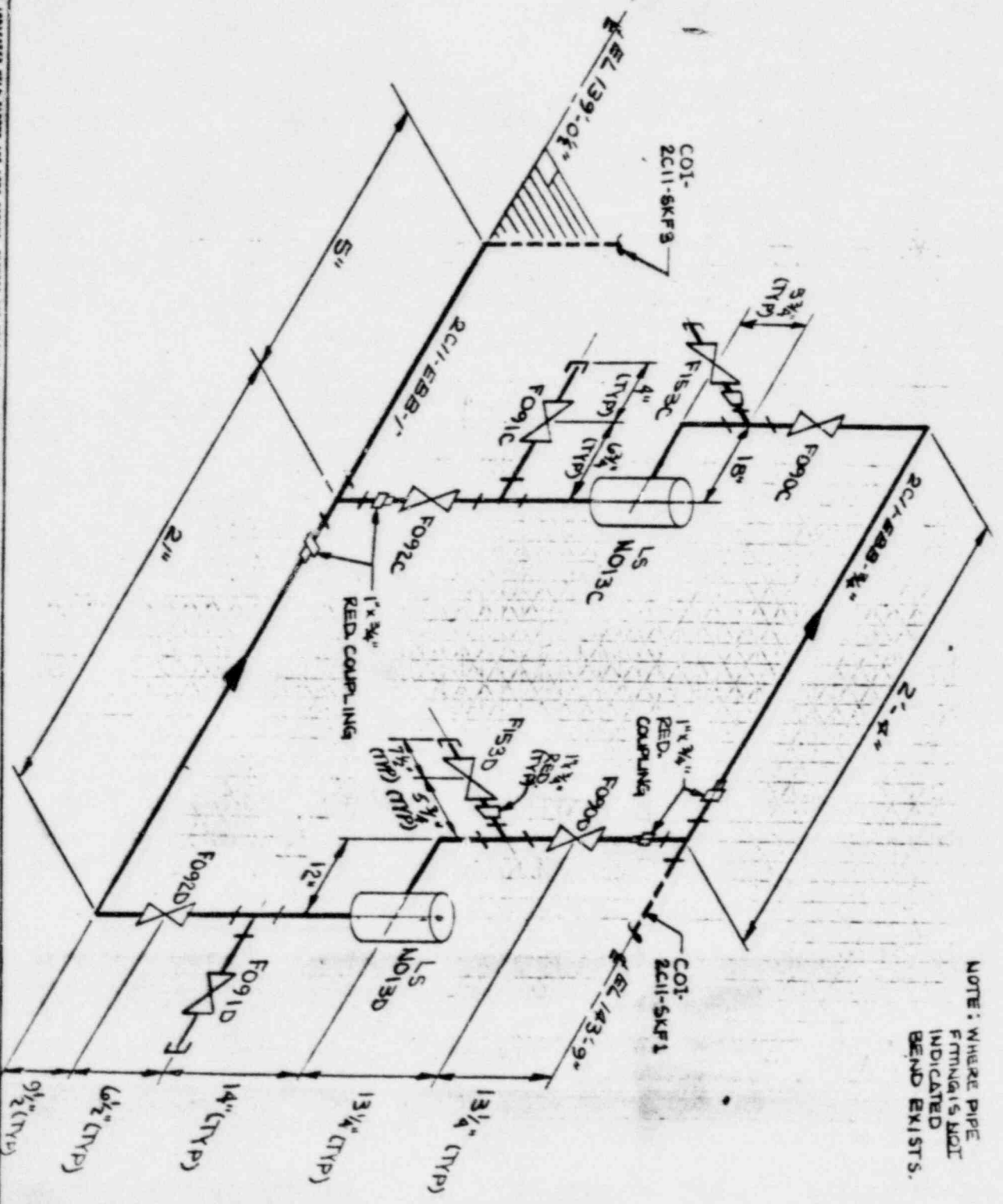
CUSTOMER		JOB NO.	
SYSTEM 2C11-6DV		150 2C11-SKF1 0	
REF DWGS		DRAWN	
2C11-SK-1		CHK'D	
HT-2009		APPR'D	

GEORGIA POWER COMPANY  
ISOMETRIC DRAWING



89-70-185

REVISIONS: ALL CHANGES TO BE INDICATED BY A NUMBER AND DATE. DIMENSIONS ARE GIVEN IN FEET AND INCHES. DIMENSIONS IN PARENT PARENTS ARE TO BE MAINTAINED. DIMENSIONS IN BRACKETS ARE TO BE MAINTAINED. DIMENSIONS IN PARENTS ARE TO BE MAINTAINED.



NOTE: WHERE PIPE  
FITTINGS NOT  
INDICATED  
BEND EXISTS.

CUSTOMER		SYSTEM		JOB NO.		DRAWN		CHECKED		APPROVED	
2C11-SDV		2C11-5KF3		150-2C11-5KF3		[ ]		[ ]		[ ]	
REF DWGS		HT-2009		[ ]		[ ]		[ ]		[ ]	
REV.	DATE	BY	DESCRIPTION								

GEORGIA POWER COMPANY  
ISOMETRIC DRAWING