

docket

THIS DOCUMENT CONTAINS
POOR QUALITY PAGES

NOV 14 1973

DOCKET NOS.: 50-329 AND 50-330

APPLICANT : CONSUMERS POWER COMPANY (CPC)

FACILITY : MIDLAND PLANT

SUMMARY OF MEETING HELD OCTOBER 31, 1973 ON QUALITY ASSURANCE

Representation of Consumers Power Company and the Bechtel Power Corporation met with members of the Regulatory staff in Bethesda, Maryland to discuss the applicant's proposed response to the Atomic and Safety and Licensing Appeal Board's Memorandum and Order (ALAB-152) dated October 5, 1973.

The applicant and Bechtel presented a draft of "Supplementary Requirements to Field Inspection Manual Procedure G-1" dated October 19, 1973, and a revised Field Quality Control organization chart dated October 19, 1973. Based on a first reading of the material, the staff commented that the proposed revisions did not appear to be fully responsive to the board's order. This impression is based on the following points:

1. Field Inspection Manual

Item 3c states in part that recommendations for salary increases for Quality Control Engineers at the job site are channeled through the Project Superintendent. This gives the impression that the Project Superintendent might exercise some control over these increases and thereby compromise the independence of these Quality Control Engineers.

Item 3d states that "The Project Superintendent shall be responsible for providing day to day project direction to the Project Field Quality Control Engineer . . ." It should be sufficient to provide coordination of QA activities. Day to day project direction implies an encroachment upon the independence of the Project Field Quality Control Engineer.

2. Organization Chart 8006180652 G

The chart lacks clarity because there is no solid line to indicate the Project Field Quality Control Engineer's line of primary responsibility. Furthermore, the line connecting the Project Field Quality Control Engineer to the Project Superintendent indicates that the Project Superintendent issues to the Field Quality Control Engineer "directions and instructions concerned with coordination

LB

NOV 14 1973

of day to day project operation." These directions and instructions are not consistent with the independence of the Quality Control Engineer sought by the board.

The applicant assured the staff that their comments would be considered in the final revisions to the Quality Assurance Manuals and the Organization Chart. The revised material is to be submitted to the staff by November 9, 1973.

Original Signed

S. D. MacKay, Project Manager
Pressurized Water Reactors Br. No. 4
Directorate of Licensing

Enclosures:

- 1. Draft Supplementary Requirements to Field Inspection Manual Procedure G-1 dated October 19, 1973.
- 2. Field Quality Control Organization Chart dated October 19, 1973.
- 3. Attendance List

DISTRIBUTION:

Dockets (2) JCostello, RO
 AEC PDR JHenderson, RO
 LOCAL PDR
 L Rdg
 RP Rdg
 PWR-4 Rdg
 RCDeyoung
 ASchwencer
 RWKlecker
 RO (3)
 TR AD's
 TR BC's
 SDMacKay
~~FMiraglia~~ FMiraglia
 EIGoulbourne
 RP AD;s
 RP BC's
 DKartalia
 RFraley (16)
 JHendrie
 MPeranich
 SBryan

OFFICE ▶	PWR-4				
SURNAME ▶	SDM				
DATE ▶	SDMacKay:kmf				
	11/14/73				

ENCLOSURE 3
ATTENDANCE LIST

NOV 14 1973

Atomic Energy Commission

S. D. MacKay
W. Massar
M. Peranich
W. Vetter, RO:III
S. Eryan
J. Costello
R. Vollmer
J. Henderson

BECHTEL CORPORATION

M. Krout
L. Scoville
D. Johnson
S. Bernsen

Consumers Power Company

W. Kessler
G. Keeley
J. Bacon

PROJECT SPECIAL PROVISIONS
NOTICE SF/PSP #3 REV. 0, 7220

Bechtel Power Corporation

Interoffice Memorandum

To: PFQCE, Job No. 7220

Subject: Supplementary Requirements to
Field Inspection Manual
Procedure G-1, Job No. 7220

Copies to: Job No. 7220 Project Team Holders
of the Field Inspection Manual and
Quality Control Notices Manual.

Date: October 19, 1973

From: D. R. Johnson

Of: SF Power Division
Construction Dept.

At: 245 Mission St.
7th Floor B2
Ext. 5546

The following special provisions for the Midland Project have been established as supplementary requirements to the subject Field Inspection Manual Procedure G-1. These special provisions were initiated at Bechtel Construction Management's request, with the full concurrence of Bechtel Project Management and Consumers Power Company.

These same special provisions shall also apply to each of the other procedures contained in the Field Inspection Manual wherever applicable.

1. SCOPE OF THE QUALITY CONTROL PROGRAM

The requirements for construction quality control contained in the Field Inspection Manual and Quality Control Notices Manual shall be applied to all "Q" listed materials and equipment. Application of these requirements to other permanent or temporary plant materials and equipment shall be as directed by Bechtel Construction Management and Consumers Power Company.

2. DEFINITIONS OF REPORTING RESPONSIBILITIES

- a. Project Direction: Directions and instructions concerned with coordination of day to day project operations.
- b. Functional Direction: The positive mandatory instructions and directions given to control a function or activity.
- c. Functional and Administrative Direction: The positive mandatory instructions and directions given to control a function or activity including responsibility for hiring, training, assignment, performance review and salary.

3. ADMINISTRATION OF THE FIELD QUALITY CONTROL PROGRAM

- a) The Chief Field Quality Control Engineer shall be responsible for the functional direction, hiring, assignment, training and dismissal of the Quality Control Engineers at the jobsite. This responsibility shall be exercised through and upon the recommendations of the Ann Arbor Quality Control Supervisor and Project Field Quality Control Engineer, see Figure 1.
- b) The Chief Field Quality Control Engineer shall be responsible for performance evaluation and initiation of salary increases for the Ann Arbor Quality Control Supervisor and Project Field Quality Control Engineer.
- c) The Project Field Quality Control Engineer shall be responsible for performance evaluations and recommendations for salary increases for the Quality Control Engineers at the jobsite. These recommendations are channeled through the Project Superintendent to the Manager of Construction who assure that any salary increases are within the limits established by Bechtel personnel policy for the various pay grades and within government wage guidelines. Such increases may be disapproved only if they do not fall within such policy limits and guidelines. If an increase is disapproved, the disapproval will be reviewed by and subject to the concurrence of the Chief Field Quality Control Engineer.
- d) The Project Superintendent shall be responsible for providing day to day project direction to the Project Field Quality Control Engineer, and coordination of the field Quality Control organization's activities with the activities of the other jobsite construction forces, see Figure 1.

4. PROJECT FIELD QUALITY CONTROL ENGINEER'S
STOP WORK AUTHORITY.

- a) The Project Field Quality Control Engineer is responsible for supervision of the Construction Quality Control program at the jobsite to assure that the work falling under the scope of the program is properly inspected and documented. The Project Field Quality Control Engineer receives administrative and technical direction from the Chief Field Quality Control Engineer for the preparation of Field Inspection Plans. The Chief Field Quality Control Engineer provides this direction through Master Inspection Plans which are prepared by home office staff discipline Quality Control Engineers based on the program criteria. The Project Field Quality Control Engineer has authority to stop work. This authority, communicated through the Project Superintendent, shall require immediate stoppage of work operations and other construction activities determined to be improperly controlled or otherwise in nonconformance with the quality requirements of the applicable design specifications, drawings and other program criteria. Similarly, the Project Field Quality Control Engineer has the authority to stop work if a designated quality control inspection, examination or test operation is bypassed to the point where the work is no longer capable of being properly inspected. Such stop work orders cannot be countermanded by the Project Superintendent.
- b) The Project Field Quality Control Engineer has the same authority as stated in (a) above to stop the work of subcontractors.
- c) The Project Field Quality Control Engineer shall be responsible for reviewing and approving field prepared requisitions for "Q" list materials, services and equipment. He shall assure the requisitions and resultant field purchase orders contain a Project Engineering specification governing applicable supplier QA requirements. The Project Field Quality Control Engineer has the authority to stop the placement of field purchase orders for "Q" list material, services and equipment if the procurement documents do not contain a Project Engineering prepared specification governing applicable supplier QA requirements.

5. INSPECTION BY FIELD ENGINEERS AND QUALITY CONTROL ENGINEERS

The Project Field Engineer shall be responsible for assigning Field Engineers to perform in process, production control, inspection activities. The Project Field Quality Control Engineer shall be responsible for providing quality control surveillance over the inspections performed by Field Engineers as well as assigning Quality Control Engineers to perform all quality verification inspections. In process, production control inspections and quality verification inspections shall be predetermined and identified on the Master Inspection Plans prepared by San Francisco home office staff Quality Control Engineers and approved by the Chief Field Quality Control Engineer.

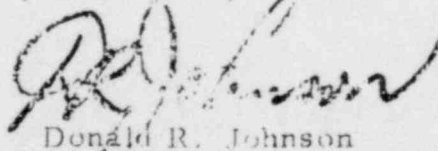
6. SURVEILLANCE INSPECTION OVER WORK PERFORMED BY SUBCONTRACTORS

It shall be the responsibility of the Project Field Quality Control Engineer to assure that the work performed by on site subcontractors is done in full compliance with their Bechtel approved Quality Assurance/Quality Control manuals and other quality requirements of the subcontract documents. This assurance shall be provided by means of surveillance inspection performed by Field Quality Control Engineers over the inspection and/or work performed by subcontractors.

7. TESTING LABORATORIES AND INSPECTION SUBCONTRACTORS

The Project Field Quality Control Engineer shall be responsible for assigning Field Quality Control Engineers to provide functional technical direction over the work performed by testing laboratories and inspection subcontractors, see Figure 1.

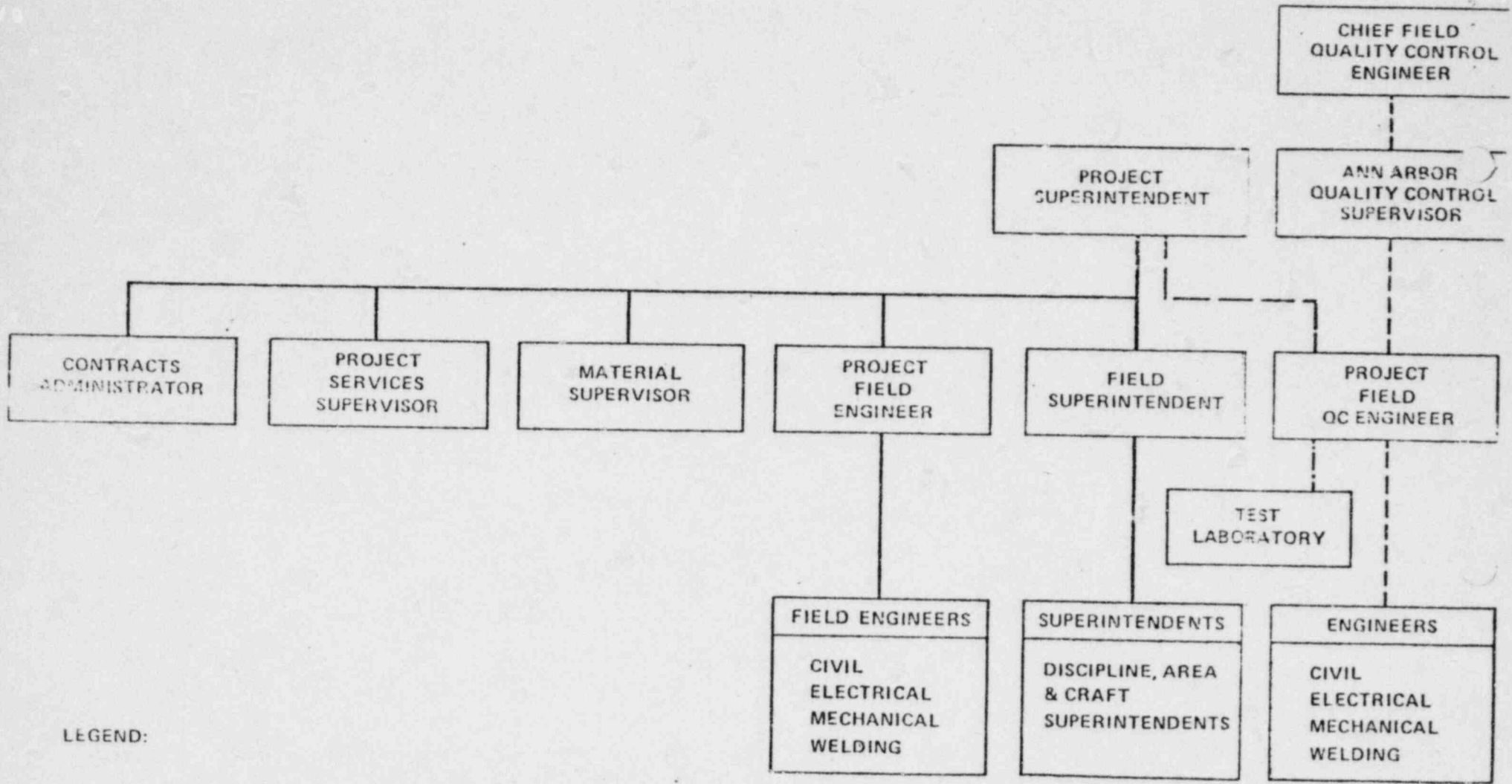
Please direct any questions you may have regarding these special provisions to the Ann Arbor Quality Control Supervisor.



Donald R. Johnson
Chief Field Quality Control Engineer

FIELD QUALITY CONTROL
MIDLAND PROJECT

JOB NO. 7220



LEGEND:

- PROJECT DIRECTION: DIRECTIONS AND INSTRUCTIONS CONCERNED WITH COORDINATION OF DAY TO DAY PROJECT OPERAT
- .-.-.-.- FUNCTIONAL DIRECTION: THE POSITIVE MANDATORY INSTRUCTIONS AND DIRECTIONS GIVEN TO CONTROL A FUNCTION OR ACTIVITY.
- FUNCTIONAL AND ADMINISTRATIVE DIRECTION: THE POSITIVE MANDATORY INSTRUCTIONS AND DIRECTIONS GIVEN TO CONTROL A FUNCTION OR ACTIVITY INCLUDING RESPONSIBILITY FOR HIRING, TRAINING, ASSIGNMENT, PERFORMANCE REVIEW AND SALARY.
- FUNCTIONAL AND ADMINISTRATIVE DIRECTION AND PROJECT DIRECTION.