



UNITED STATES
NUCLEAR REGULATORY COMMISSION

REGION IV
URANIUM RECOVERY FIELD OFFICE
BOX 26326
DENVER, COLORADO 80226

OCT 18 1989

URFO:DLJ
Docket No. 40-8904

MEMORANDUM FOR: Docket File No. 40-8904

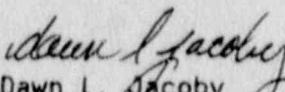
FROM: Dawn L. Jacoby
Project Manager

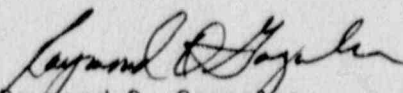
Raymond O. Gonzales
Project Manager

SUBJECT: PHOTOGRAPHS FROM SEPTEMBER 20, 1989 SITE VISIT
TO THE L-BAR MILL

On September 20, 1989, the authors visited the L-Bar Mill site to conduct a review of construction records and to observe the completed reclamation construction activities. Results of the inspection are contained in inspection report No. 40-8904/89-003 dated October 16, 1989.

While at the site, the attached photographs were taken of the major features and of observed problem area as described in the October 16, 1989 inspection report. Approximate photograph locations and directions are shown on the attached figure.


Dawn L. Jacoby
Project Manager


Raymond O. Gonzales
Project Manager

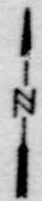
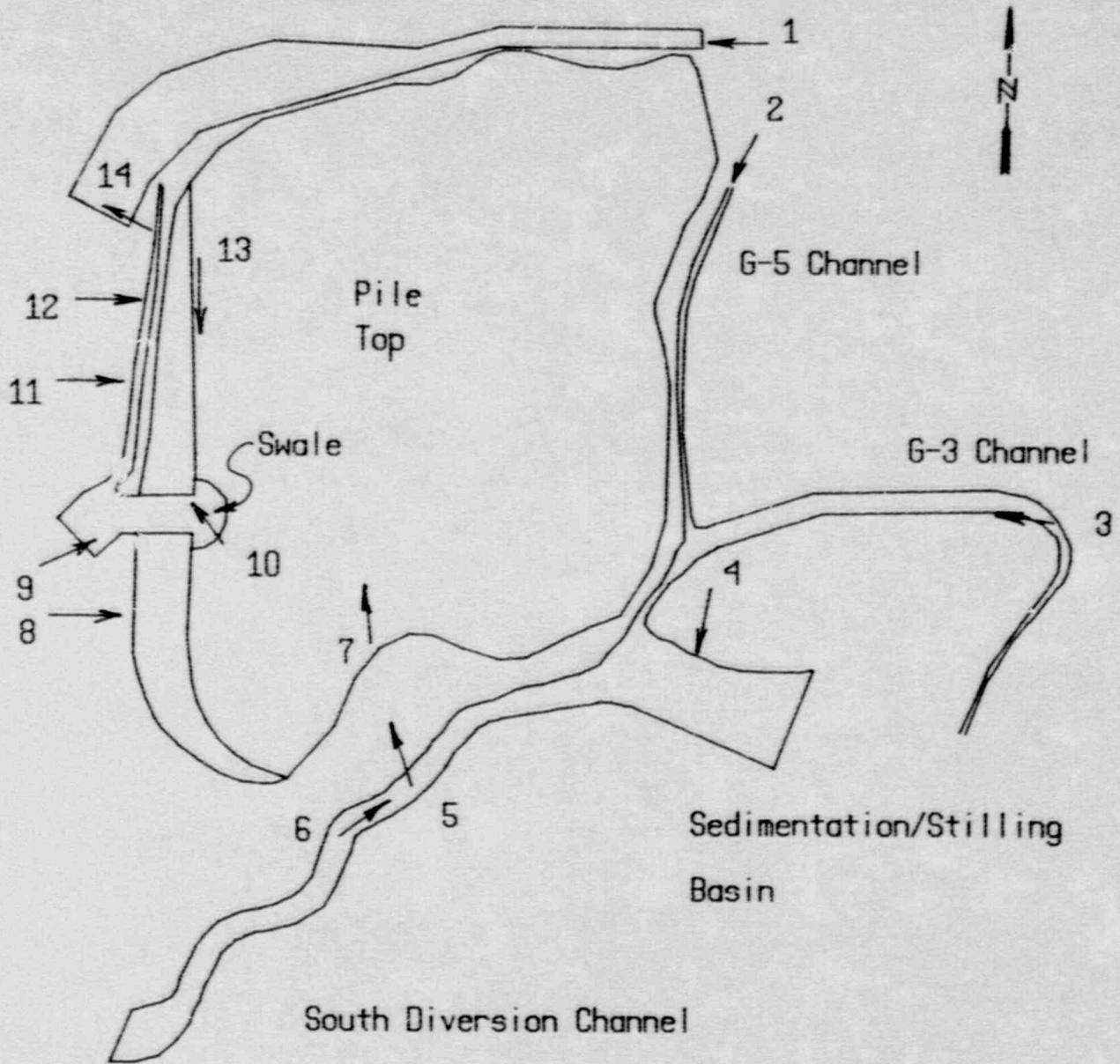
Approved by: 
for Ramon E. Hall
Director

Attachments:
As stated

DF02
11

8911020294 891018
PDR ADOCK 04008904
C PNU

North Diversion Channel



G-5 Channel

G-3 Channel

Sedimentation/Stilling
Basin

South Diversion Channel

L-Bar Mill

Approximate Location & Direction
of Photos Taken on 9/20/89

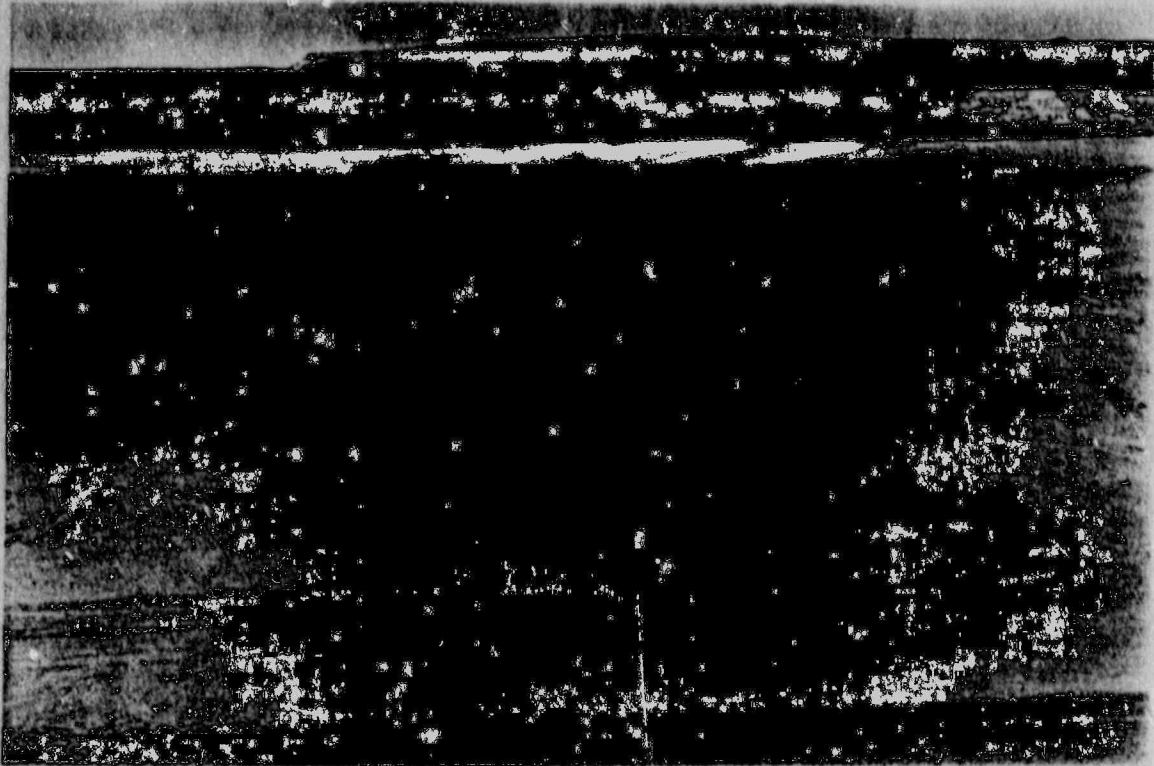


Photo 1 - North Diversion Channel

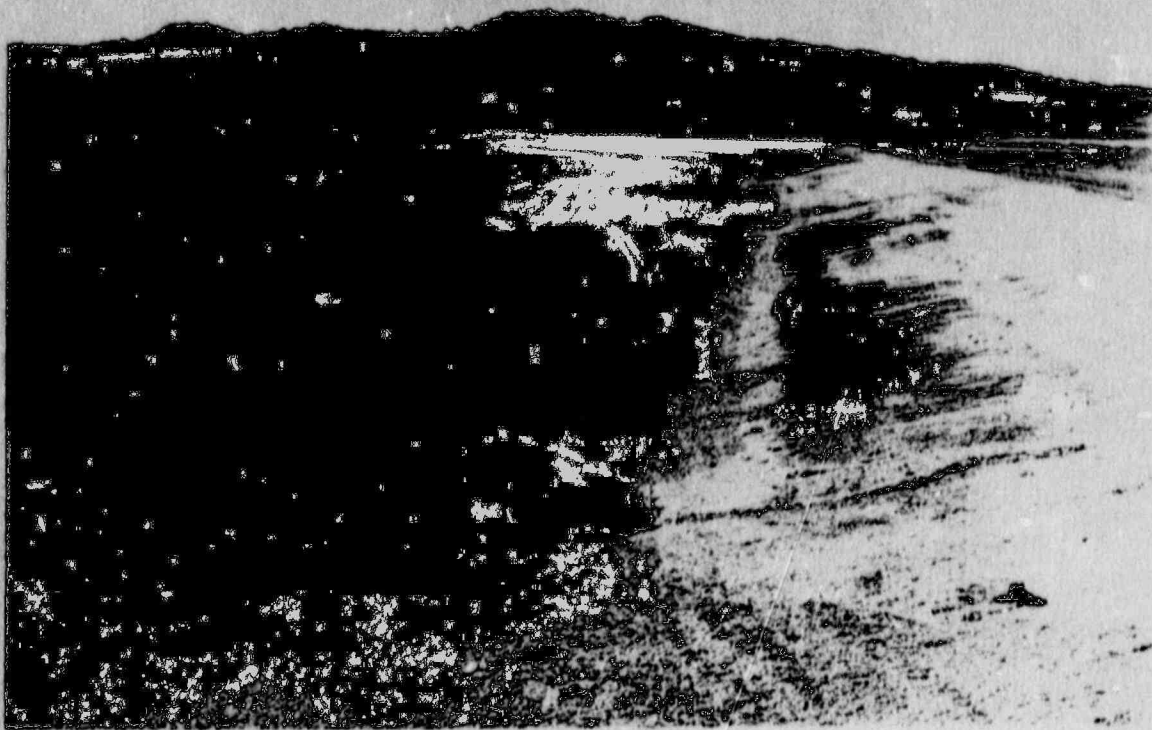


Photo 2 - G-5 Diversion Channel

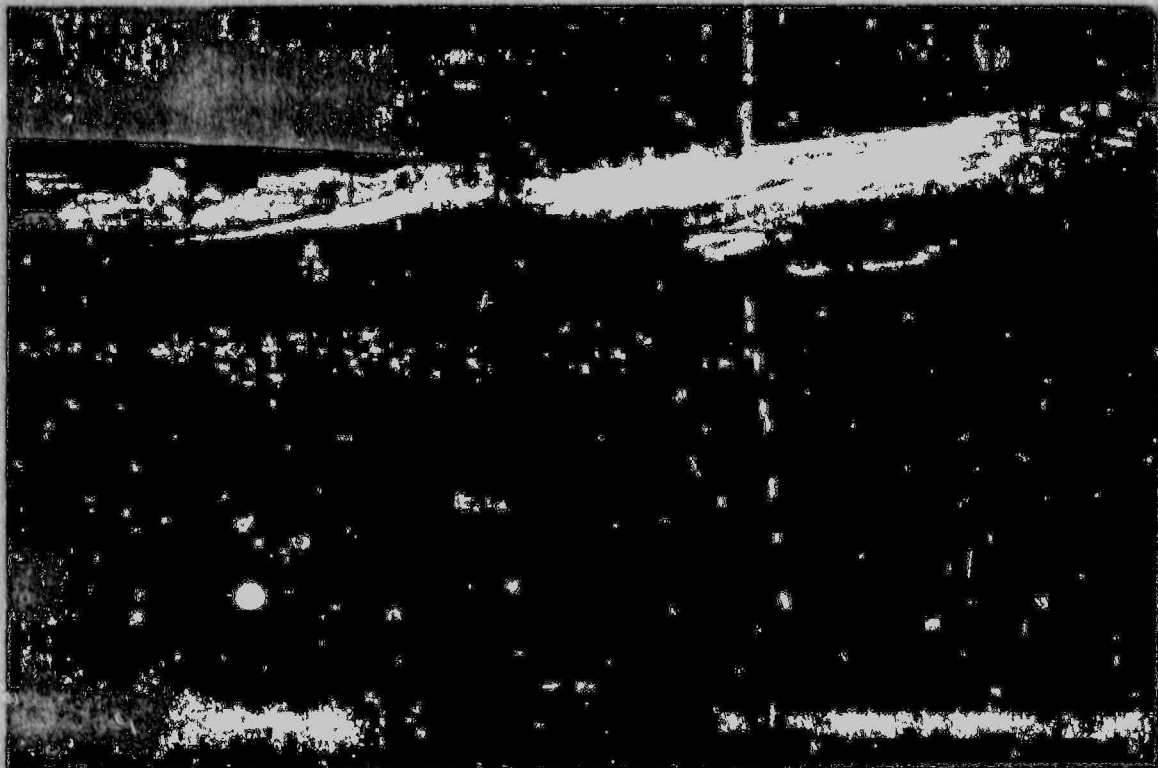


Photo 3 - G-3 Diversion Channel



Photo 4 - Sedimentation/Stilling Basin

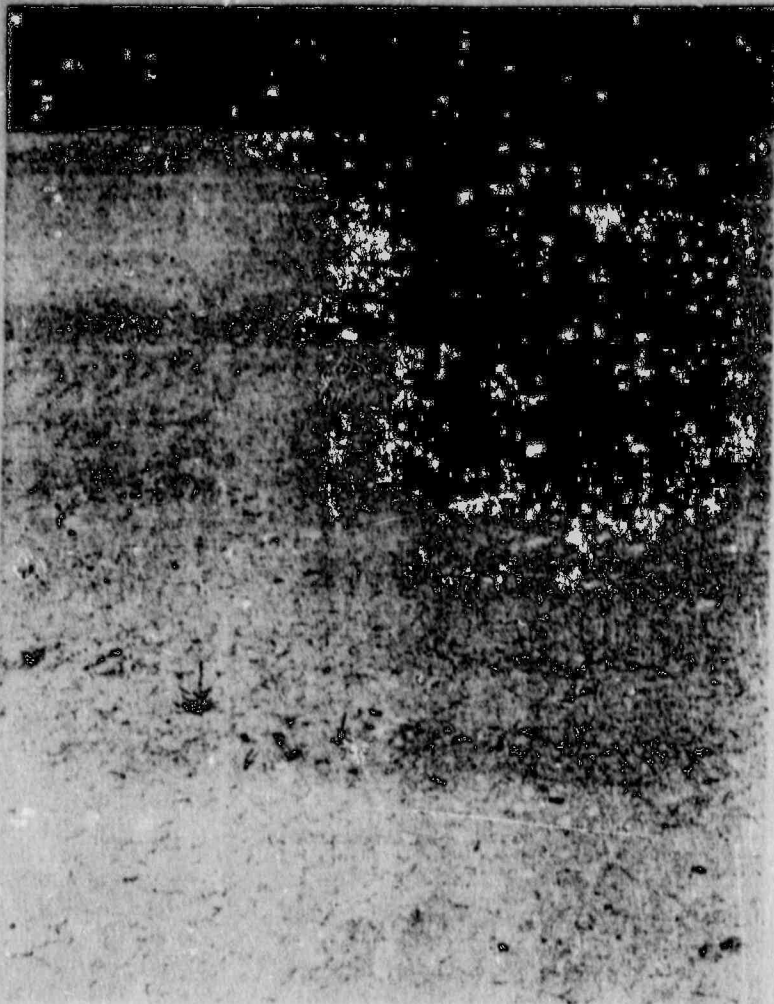


Photo 5 - South Diversion
Channel

Side Slope Adjacent to Tailings
in Hardpan Area - Note two
small erosion rills at the top
of the slope.



Photo 6 - South Diversion Channel

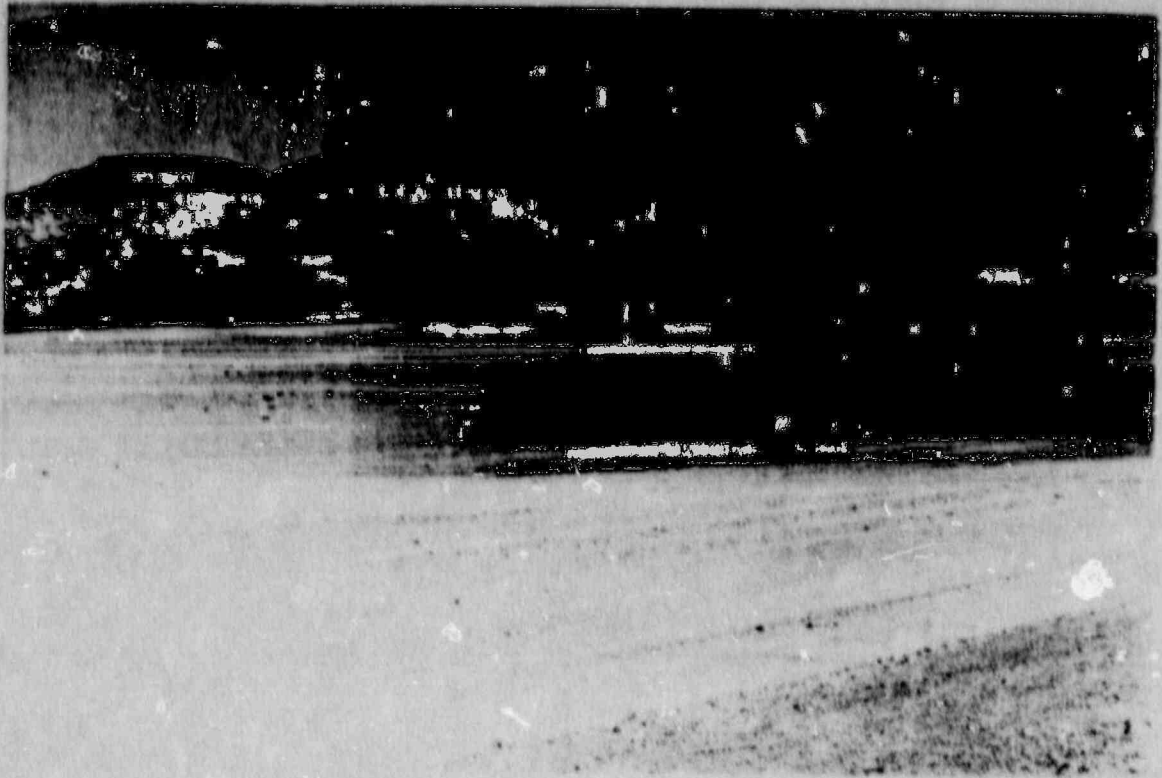


Photo 7 - Pile Top - Note undulating surface.

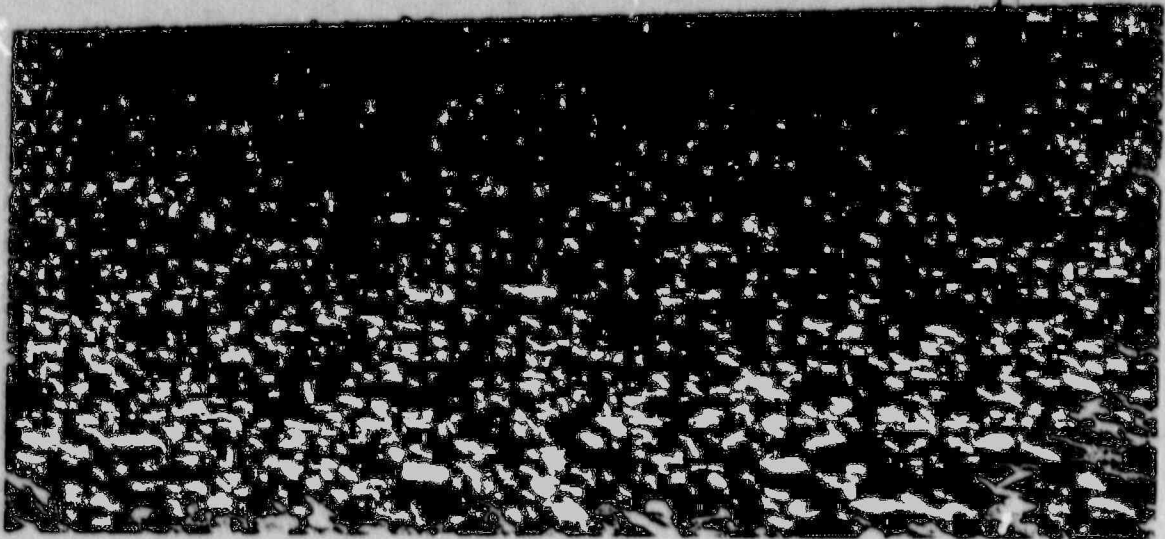


Photo 8 - Downstream Slope of Embankment - Note areas with vegetative growth indicating poor or no erosion protection.

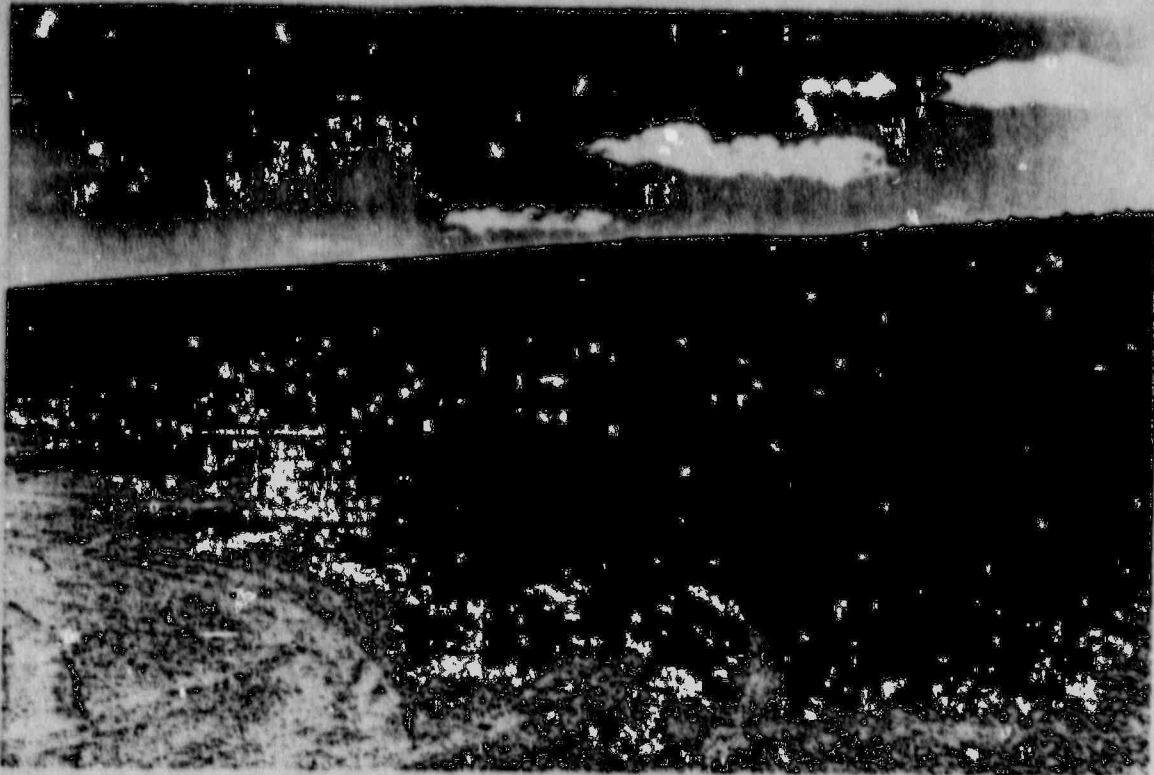


Photo 9 - Swale

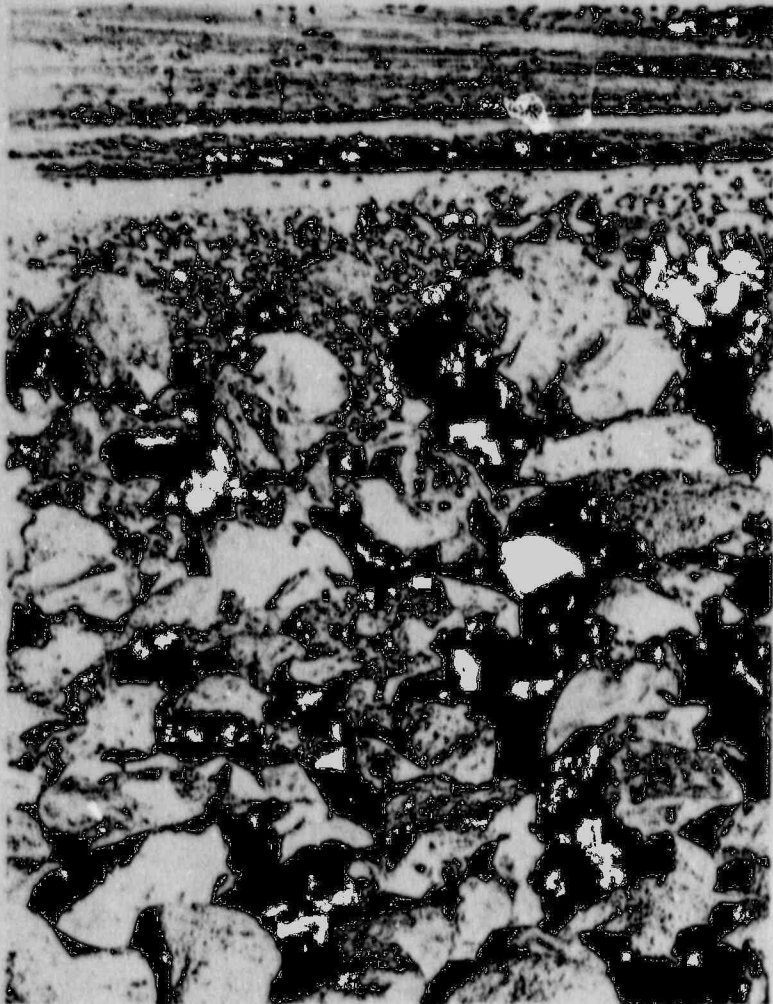


Photo 10 - Large Riprap in Swale

Note pockets of small bedding and bare spots.



Photo 11 - Downstream Slope
of Embankment

Typical area of poor erosion
protection.

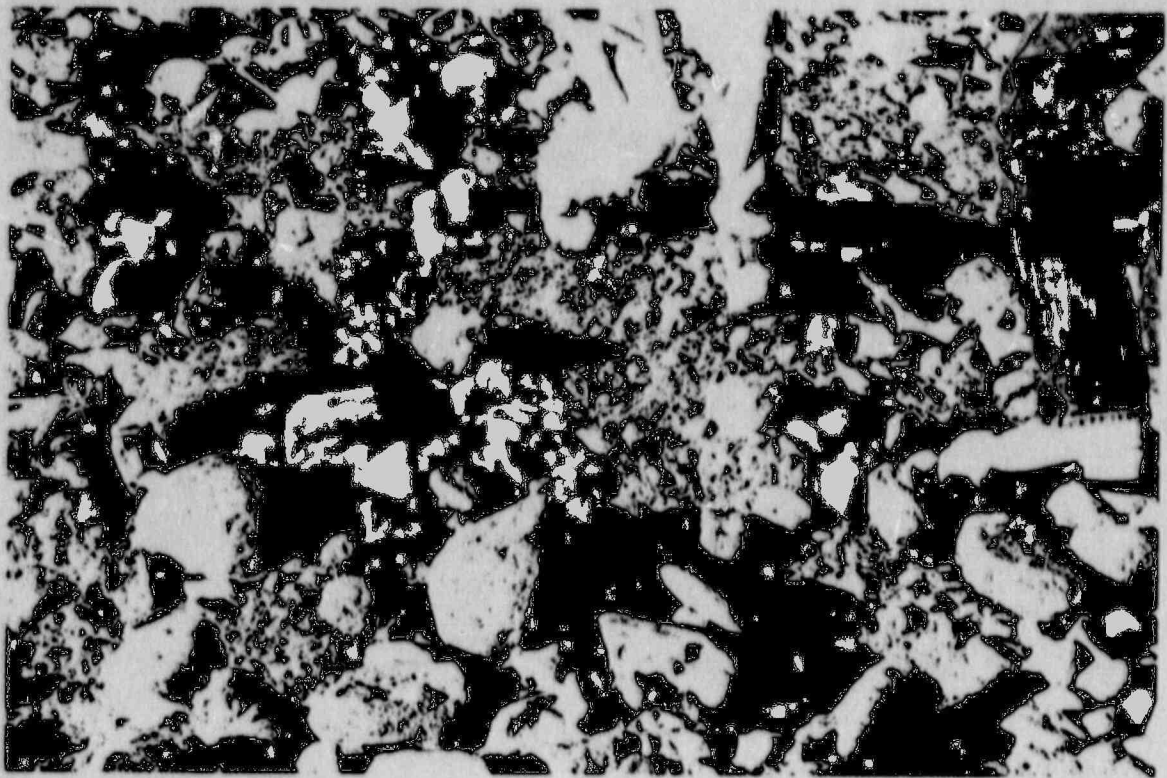


Photo 12 - Downstream Slope of Embankment - Typical area of
poor erosion protection.

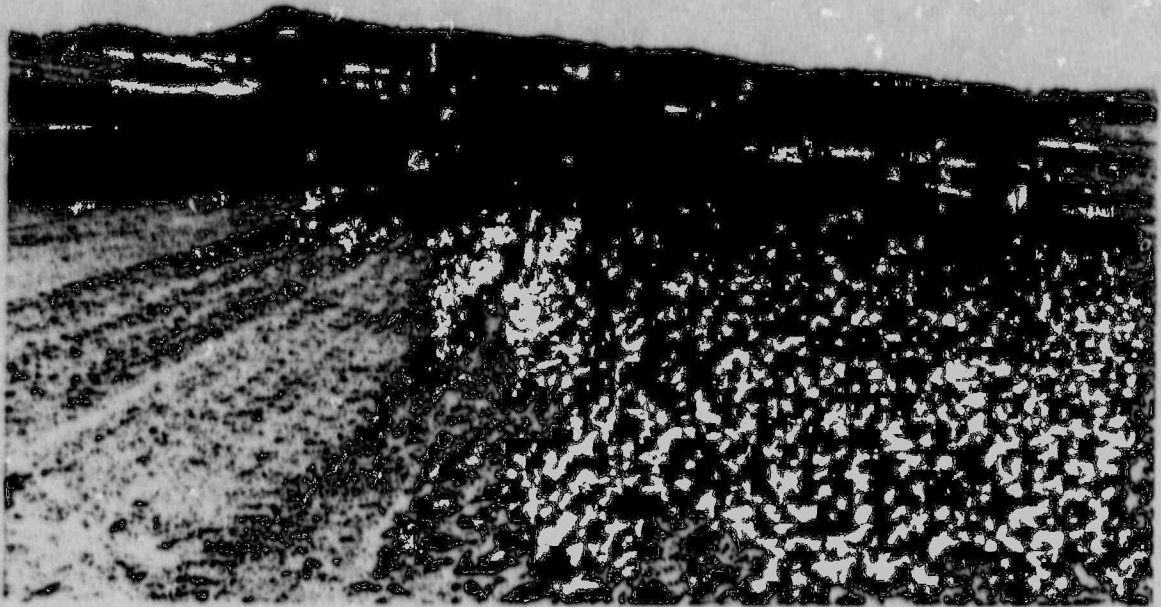


Photo 13 - Crest of Embankment

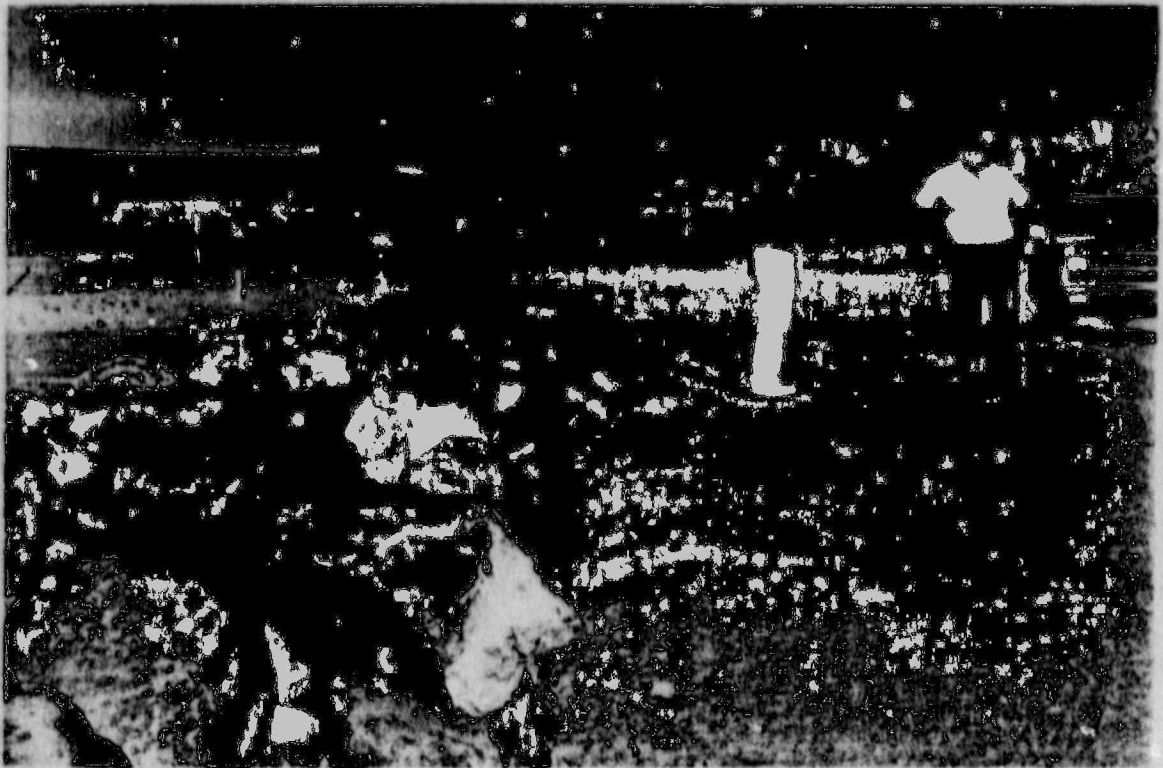


Photo 14 - Energy Dissipator in North Diversion Channel

8904/DLJ/89/10/03/M

DISTRIBUTION

Docket File 40-0904

PDR/DCS

ABBeach, RIV

DJacoby

RGonzales

RCPD, NM

LL0 Branch, LLWM

URFO r/f

CONCURRENCE:

RGonzales/URFO/lv

DJacoby/URFO

EHawkins/URFO

REHall/URFO

DATE:

10/17/89

10/17/89

10/18/89

10/18/89

[Signature]
[Signature]
[Signature]
[Signature]