

OCT 12 1989

In Reply Refer To:
Dockets: 50-498
50-499

Houston Lighting & Power Company
ATTN: E. E. Vaughn, Group
Vice President, Nuclear
P.O. Box 289
Wadsworth, Texas 77483

Gentlemen:

This refers to the meeting conducted at Houston Lighting & Power Company's request in the Region IV office on September 21, 1989. This meeting related to activities authorized by NRC Licensee Nos. NPF-76 and NPF-80 for South Texas Project, Units 1 and 2. The meeting was attended by those listed on the attached Attendance List.

The subjects discussed at this meeting are described in the enclosed Meeting Summary.

It is our opinion that this meeting was beneficial and has provided a better understanding of Houston Lighting & Power Company's quality control at South Texas Project.

In accordance with Section 2.790 of the NRC's "Rules of Practice," Part 2, Title 10, Code of Federal Regulations, a copy of this letter will be placed in the NRC's Public Document Room.

Should you have any questions concerning this matter, we will be pleased to discuss them with you.

Sincerely,

Original Signed By:
James L. Milhoan

James L. Milhoan, Director
Division of Reactor Projects

Enclosure: Meeting Summary w/attachments

C:PSD
EHoller
10/11/89

D:DRP 10/12/89
JMLhoan
10/12/89

8910190230 891012
PDR ADDCK 05000498
P PDC

JEV

Houston Lighting & Power
Company

-2-

cc w/enclosure:
Brian Berwick, Esq.
Assistant Attorney General
Environmental Protection Division
P.O. Box 12548
Capitol Station
Austin, Texas 78711

Houston Lighting and Power Company
ATTN: J. T. Westemeier, General Manager
South Texas Project
P.O. Box 289
Houston, Texas 77483

Houston Lighting and Power Company
ATTN: M. A. McBurnett, Manager
Operations Support Licensing
P.O. Box 289
Wadsworth, Texas 77483

City of Austin Electric Utility
ATTN: R. J. Miner, Chief Operating
Officer (2 copies)
721 Barton Springs Road
Austin, Texas 78704

City Public Service Board
ATTN: R. J. Costello/M. T. Hardt
P.O. Box 1771
San Antonio, Texas 78296

Bechtel Corporation
ATTN: E. T. Molnar/L. W. Hurst
P.O. Box 2166
Houston, Texas 77252-2166

Newman & Holtzinger, P. C.
ATTN: Jack R. Newman, Esq.
1615 L Street, NW
Washington, D.C. 20036

Central Power and Light Company
ATTN: R. P. Verret/R. L. Range
P.O. Box 2121
Corpus Christi, Texas 78403

Baker & Botts
ATTN: Melbert Schwartz, Jr., Esq.
One Shell Plaza
Houston, Texas 77002

Houston Lighting & Power
Company

-3-

Doub, Muntzing and Glasgow
Attorneys at Law
Suite 400
808 Seventeenth Street, N.W.
Washington, D.C. 20006

INPO
Records Center
1100 Circle 75 Parkway
Atlanta, Georgia 30339-3064

U.S. Nuclear Regulatory Commission
ATTN: Resident Inspector
P.O. Box 910
Bay City, Texas 77414

Ms. Iris J. Jones
Acting City Attorney
City of Austin
P.O. Box 1088
Austin, Texas 78767

Houston Lighting & Power Company
ATTN: S. L. Rosen, Vice President
Nuclear Engineering and
Construction
P.O. Box 289
Wadsworth, Texas 77483

Houston Lighting & Power Company
ATTN: R. W. Chewing, Vice President
Nuclear Operations
P.O. Box 289
Wadsworth, Texas 77483

U.S. Nuclear Regulatory Commission
ATTN: Regional Administrator, Region IV
611 Ryan Plaza Drive, Suite 1000
Arlington, Texas 76011

Office of the Governor
ATTN: Ms. Darla Parker
Office of Intergovernmental Relations
Austin, Texas 78711

Mr. Joseph M. Hendrie
50 Bellport Lane
Bellport, New York 11713

Houston Lighting & Power
Company

-4-

Bureau of Radiation Control
State of Texas
1101 West 49th Street
Austin, Texas 78756

Judge, Matagorda County
Matagorda County Courthouse
1700 Seventh Street
Bay City, Texas 77414

Licensing Representative
Houston Lighting and Power Company
Suite 610
Three Metro Center
Bethesda, Maryland 20814

Houston Lighting & Power Company
ATTN: Rufus S. Scott, Associate
General Counsel
P.O. Box 1700
Houston, Texas 77001

bcc to DMB (IE45)

bcc distrib. by RIV:

DRP

DRS

Lisa Shea, RM/ALF

RSTS Operator

G. Dick, NRR Project Manager (MS: 13-D-18)

Section Chief (DRP/D)

RPB-DRSS

R. Bachmann, OGC

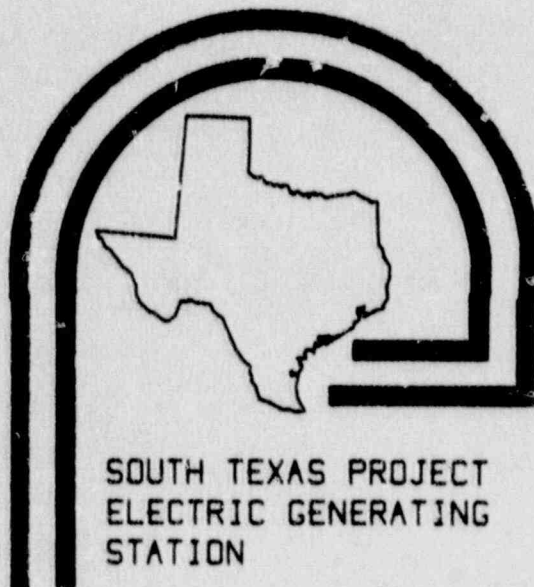
Project Engineer (DRP/D)

PRESENTATION ON STPEGS QUALITY CONTROL

21 SEPTEMBER 1989

NRC REGION IV OFFICE

ARLINGTON, TEXAS

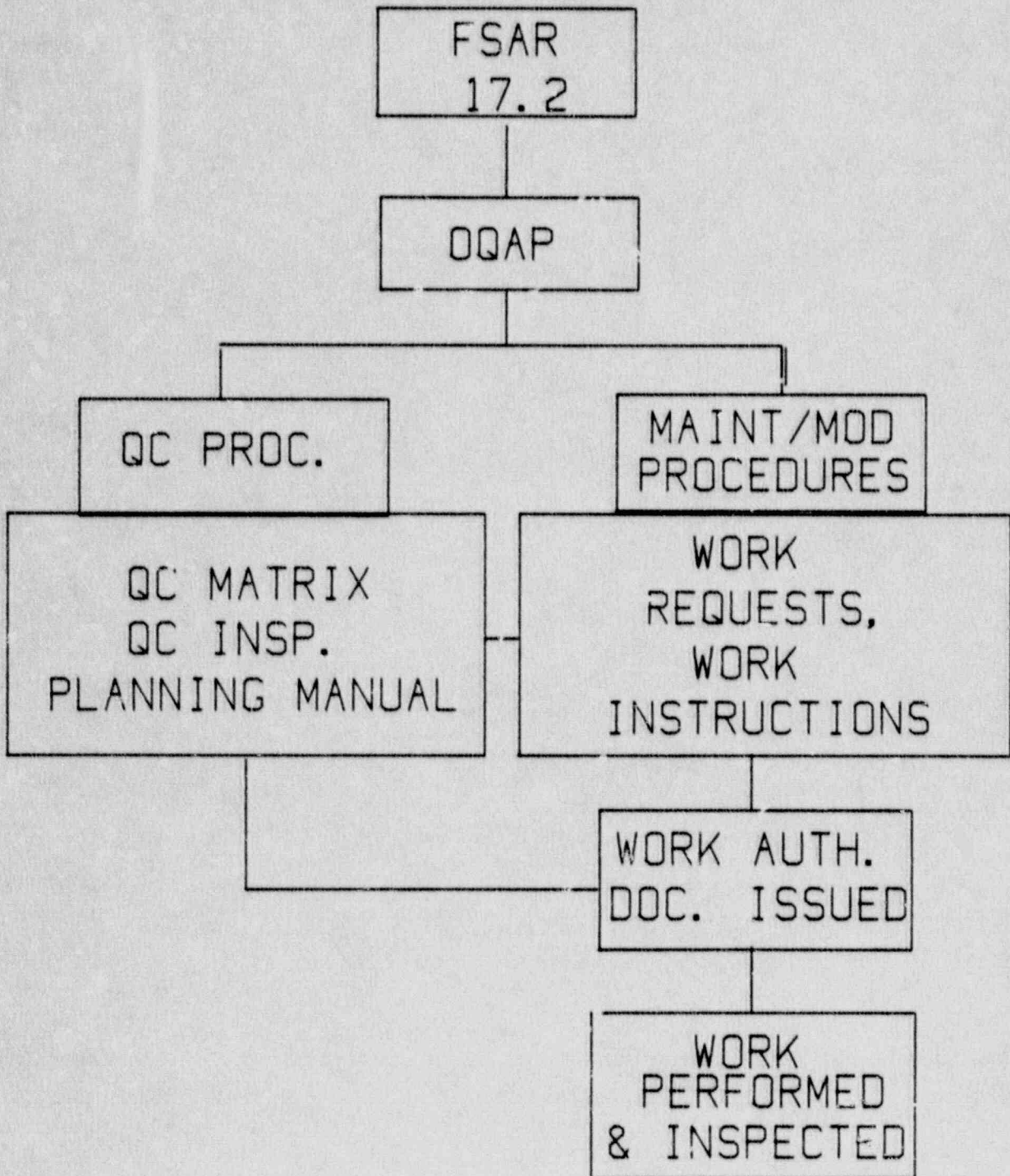


PRESENTATION OUTLINE

STPEGS QUALITY CONTROL

- I. Q. C. PROGRAM STRUCTURE
- II. PROS & CONS OF STP STRUCTURE
- III. PERFORMANCE STATISTICS
- IV. OTHER PLANTS QC STRUCTURE
- V. WELDING INSPECTION/MONITORING
- VI. PLANNED IMPROVEMENTS
- VII. SUMMARY

QC PROGRAM STRUCTURE

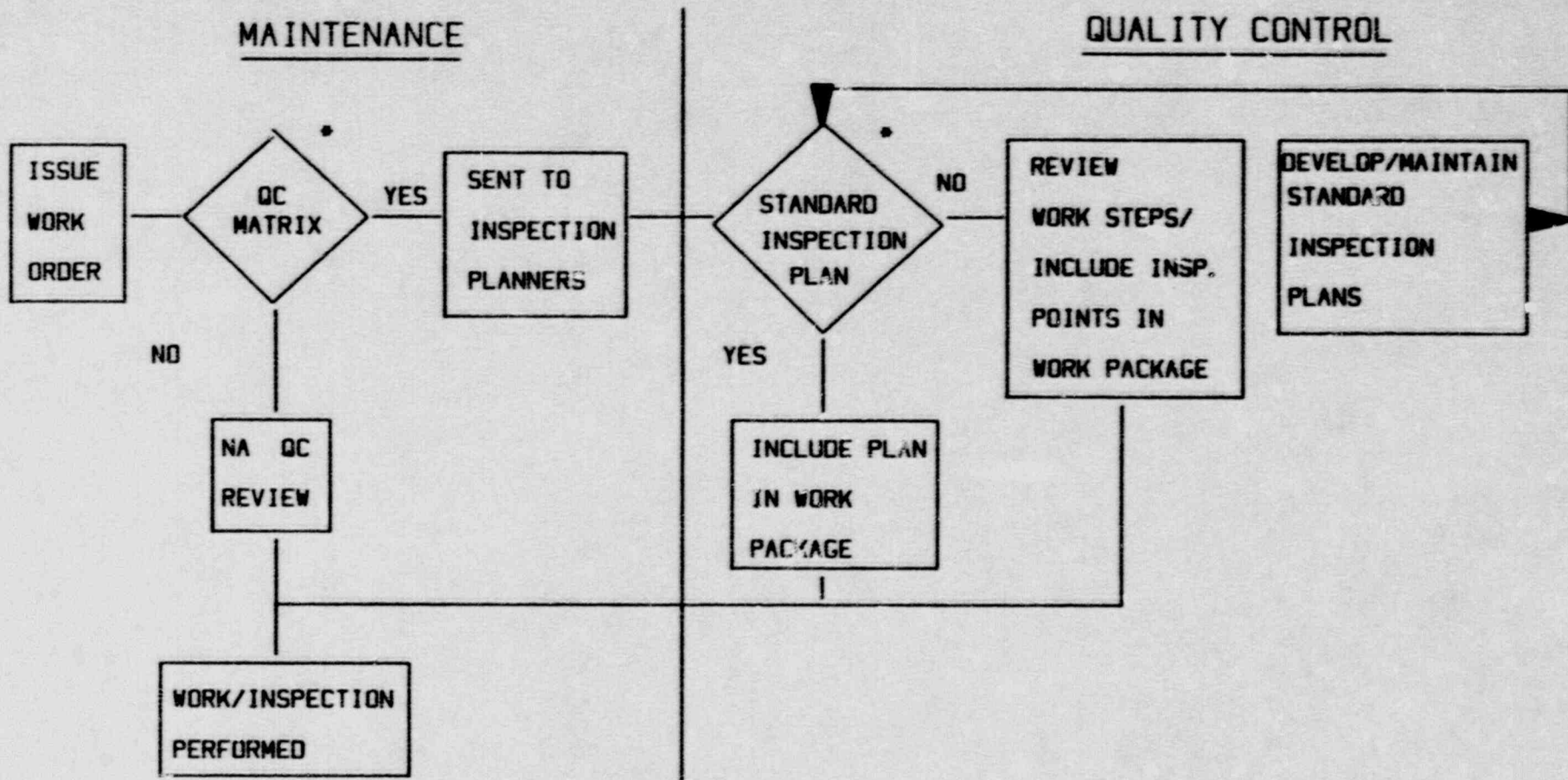


INSPECTION POINTS

QUALITY HOLD POINTS - A PRESELECTED STEP IN ANY PROCEDURE OR WORK PROCESS THAT IDENTIFIES A PORTION OF THE WORK PROCESS WHICH REQUIRES QC INSPECTION DUE TO THE COMPLEXITY, SAFETY CONSIDERATIONS, AND/OR INACCESSIBILITY OF THE ACTIVITY AND BEYOND WHICH WORK MAY NOT PROGRESS UNTIL THE REQUIRED INSPECTION IS PERFORMED.

QUALITY NOTIFICATION POINT - A PRESELECTED STEP IN ANY PROCEDURE OR WORK PROCESS THAT IDENTIFIES AN INSPECTION POINT WHICH IS ROUTINELY INSPECTED, BUT WHICH MAY BE WAIVED BASED ON OTHER ACTIVITIES OF A MORE CRITICAL NATURE AND THE AVAILABILITY OF QUALITY CONTROL PERSONNEL.

QUALITY VERIFICATION POINT - A PRESELECTED STEP SIMILAR TO A QUALITY HOLD POINT BUT WHICH ALLOWS THE INSPECTION TO BE PERFORMED AFTER THE WORK ACTIVITY IS COMPLETED.



*QC MATRIX: A LISTING OF ACTIVITIES WHERE QC INVOLVEMENT IS/IS NOT NECESSARY.

*STANDARD INSPECTION PLAN: A PREPLANNED FORM DEVELOPED FROM MAINTENANCE PROCEDURES SPECIFYING INSPECTION POINTS AND CRITERIA.

PRO'S & CON'S OF STPEGS APPROACH

PRO'S

- INSPECTION POINTS CHANGED WITHOUT REVISING PROCEDURES.
- INSPECTIONS TAKE INTO CONSIDERATION ALARA CONCERNS.
- INSPECTIONS ARE EASILY COORDINATED WITH MULTI-WORK ACTIVITIES.
- CHANGES TO INSPECTION REQUIREMENTS MADE BASED ON EQUIPMENT HISTORY.

CON'S

- EACH JOB MUST BE REVIEWED INDIVIDUALLY FOR INSPECTION REQUIREMENTS.

INSPECTION COVERAGE/STAFFING LEVELS

○ THERE ARE QC INSPECTION PERSONNEL ON SITE
24 HOURS A DAY/7 DAYS A WEEK.

○ 47 TOTAL PERSONNEL IN QC DEPARTMENT

⟨ 16 ⟩ ASSIGNED TO REC. INSP. & SURVEILLANCE

⟨ 4 ⟩ CLERICAL SUPPORT PERSONNEL

27 INSPECTION PERSONNEL ASSIGNED TO UNITS

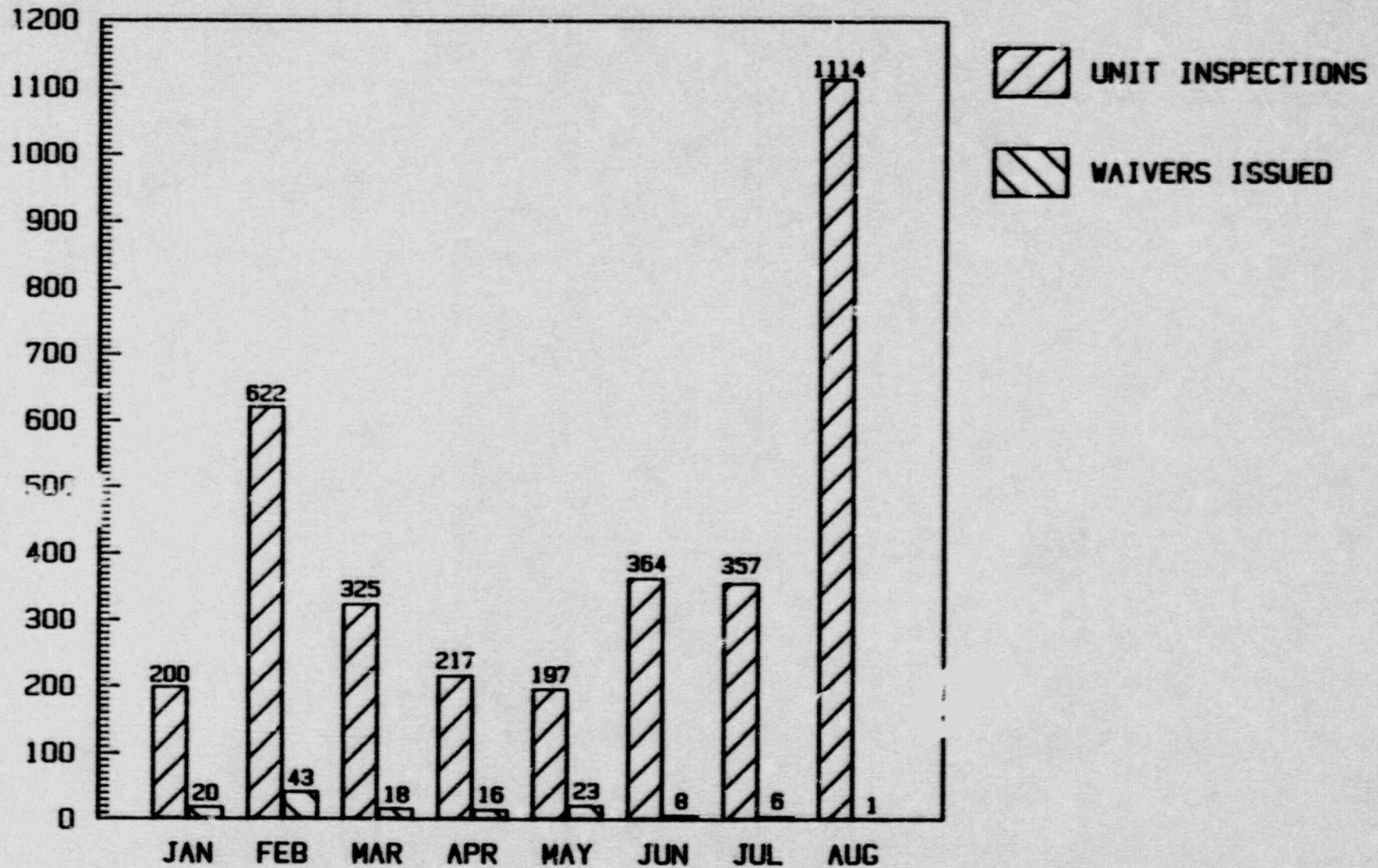
DAY SHIFT	12
NIGHT SHIFT	4
MID SHIFT	3

PLUS 8 LEADS/SUPERVISORS

○ CROSS-CERTIFICATION - MOST INSPECTION PERSONNEL
ARE MULTI-DISCIPLINED (E. G., ELECT/MECH,
MECH/NDE)

UNIT INSPECTIONS VS. WAIVERS ISSUED

ACTUAL



PERFORMANCE STATISTICS

1989

- INSPECTIONS REQUESTED 3396
- INSPECTION WAIVERS 135 (4%)

UNIT 1 REFUELING OUTAGE

- INSPECTIONS REQUESTED 1835
- INSPECTION WAIVERS UNIT #1 REFUEL OUTAGE 15 (<1%)

NOTE: INSPECTION WAIVERS ARE DOCUMENTED AND ONLY QC SUPERVISION MAY AUTHORIZE WAIVERS.

WAIVER LOG ROUTINELY REVIEWED BY QC SUPERVISION

	SEPARATE STANDARD INSPECTION PLANS	INSPECTION POINTS IN PROCEDURES	INSPECTION POINTS IN WORK REQUESTS	INSPECTION PLANNING BY DC	INSPECTION PLANNING BY MAINTENANCE	INSPECTION PLANNING BY ENGINEERING	COMPUTERIZED V. R. SYSTEM	NOTES:
HL&P	X	*	X	X	X		X	* ON A CASE BASIS
KG&E (WOLF CREEK)	X		X	X			X	PROGRAM IN PLACE FOR APPROXIMATELY 3 YEARS
AP&L (ARKANSAS NUCLEAR)		X	* X	X				*WORK INSTRUCTIONS IN WORK REQUEST ARE "RARE"
OPPD (FT. CALHOUN)		X				X		IN TRANSITION FROM PEER TO INDEPENDENT INSPECTIONS
LP&L (WATERFORD)		X	X	X	X			

WELDING INSPECTION/MONITORING

WELDING OPERATIONS

CONSTRUCTION

OPERATIONS

	INSPECT	SURV.	INSPECT	SURV.
○ CLEANLINESS		X		X
○ PREHEAT		X	X*	
○ FIT-UP	X		X	
○ PURGE		X		X
○ INTERPASS TEMP.		X		X
○ FINAL VT	X		X	
○ MT/PT/UT/RT	X		X	
○ PWHT	X		X	
○ ISI MARKING	X		X	
○ WELD ISSUE SLIP		X		X

* INSPECTED ON WELDS REQUIRING PREHEAT ABOVE AMBIENT TEMPERATURE

PLANNED IMPROVEMENTS

Provide inspection coverage for increased work scope

- o Erosion/Corrosion
- o ISI
- o PM
- o PMT
- o Items important to reliable electric power generation i.e., secondary plant