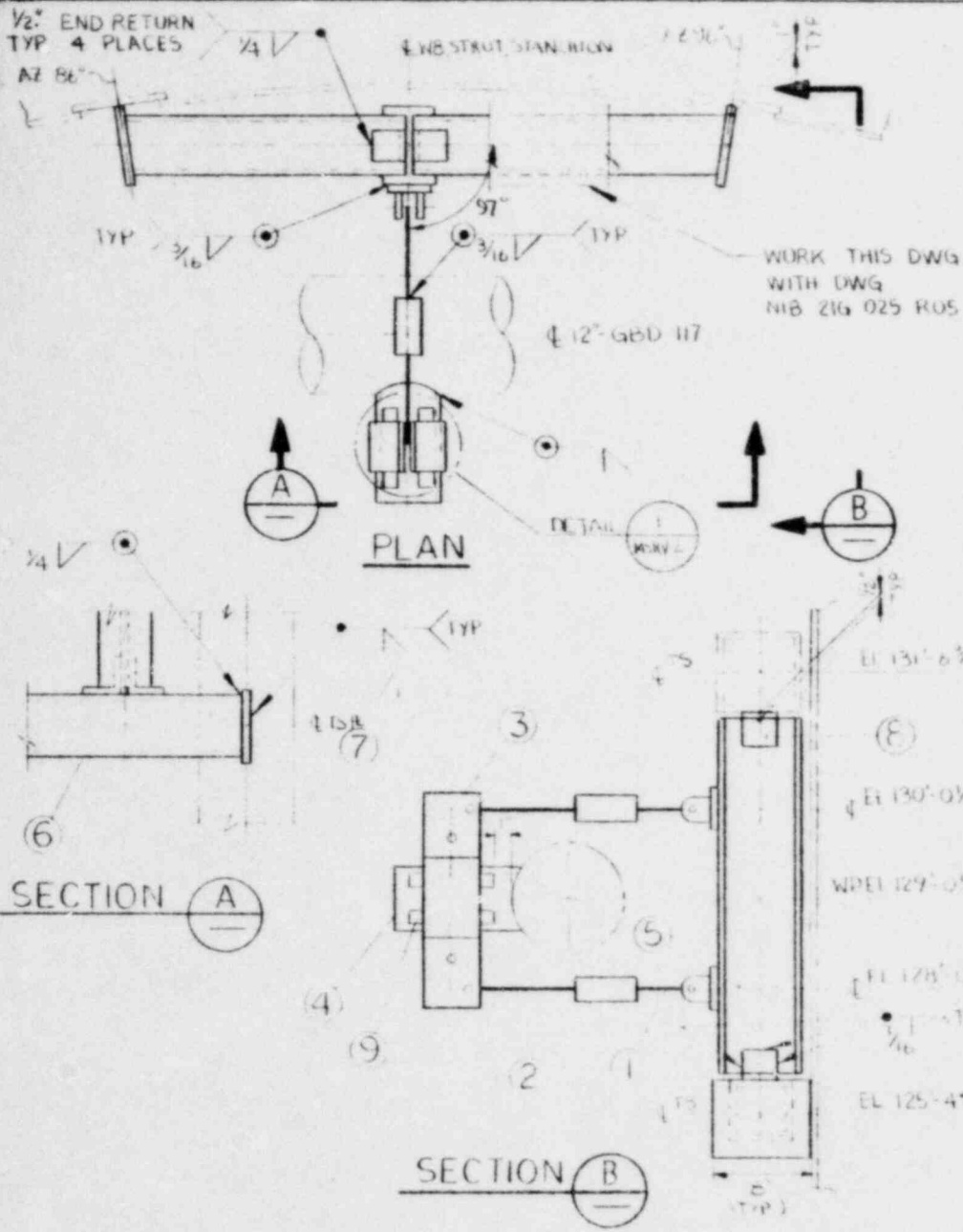


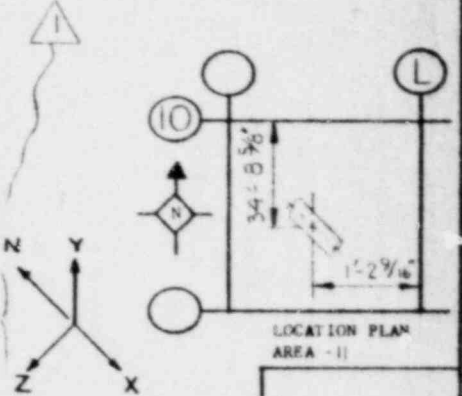
8006119008



ITEM NO	NO REQD	PART NO	SIZE	DESCRIPTION
1	2	2700	7. PP-1.5	PIPE STRUT LESS PIPE; X=6 1/4"; Y=4 1/4"
2	2	-	1 1/2" SCH 40 PIPE	9 1/2" LG
3	1	570	CWCS TEMP RISE LOAD 10.5"	RISER CLAMP; CC=24"; PIN 3/4"
4	1	-	10" PIP HAN 111.44	R=6 3/8"; D=22"; E=18"
5	1	-	WB*20	5'-1.74" LG
6	1	-	15 6" x 6" x 1/2"	E=4" LG
7	2	-	R 1/2" x 7" x 0-8"	
8	4	-	L 5" x 3" x 3/8"	0'-4" LG
9	8	-	LUGS TYPE A	

FOR MSRV GENERAL NOTES AND DETAILS SEE DWG MSRV-1 & MSRV 2
 FIELD SHALL NOT USE DETAIL 3 THIS DRAWING MSRV 2

FORCES (lb)	LAT L	FY	FZ
POS	13450		
NEG	13450		
MVMTS (in)	X	Y	Z
THERMAL	-.162	.070	1.070
SEISMIC	.001	.003	.002
SRV	.010	.010	.010



Problem No 224 Stress No 502
 issue 02
 Data Pt 32 Nuclear Class N/A
 STRESS ISO NO. H 1328 H PLV B

REV	DATE	REVISIONS	BY	CHK	DESIGN	ENGR	PROJ	APPR
1		REV PER NEW LOADS - NEW IFD	AKR					NR
2		FIELD FOR CONSTRUCTION	AKR					NR

MISSISSIPPI POWER & LIGHT COMPANY
 GRAND GULF NUCLEAR STATION
 UNIT 1

GAITHERSBURG

190 44-1328 H
 REF DWGS PIPE M-1301
 STEEL C-1088 AcB

PIPE SUPPORTS
 CONTAINMENT
 MSRV LINE-16

JOB NO 9645
 DRAWING NO/MARK NO NIB 21G 025 R02
 SHEET 1 OF 1

REV 1