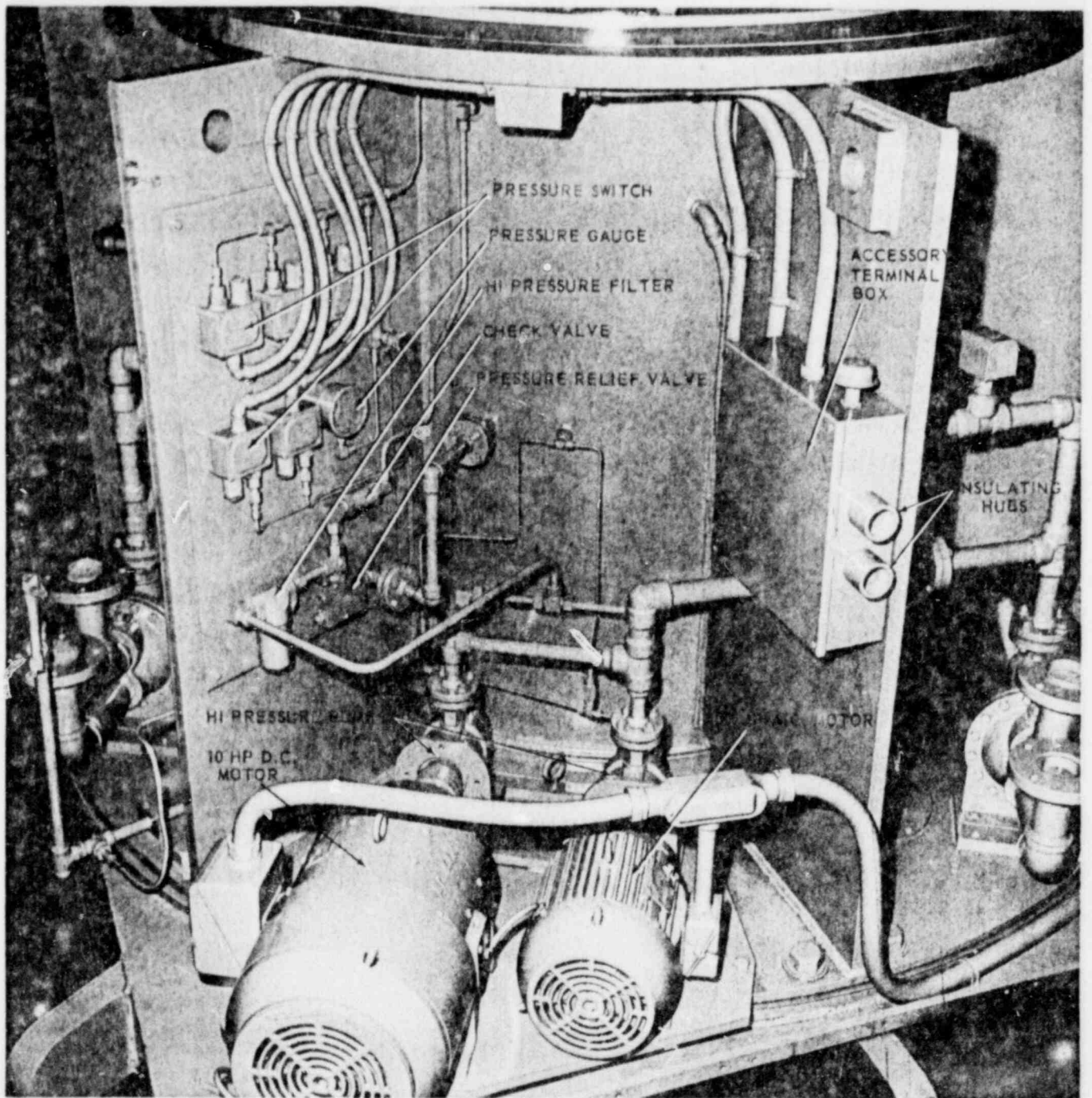
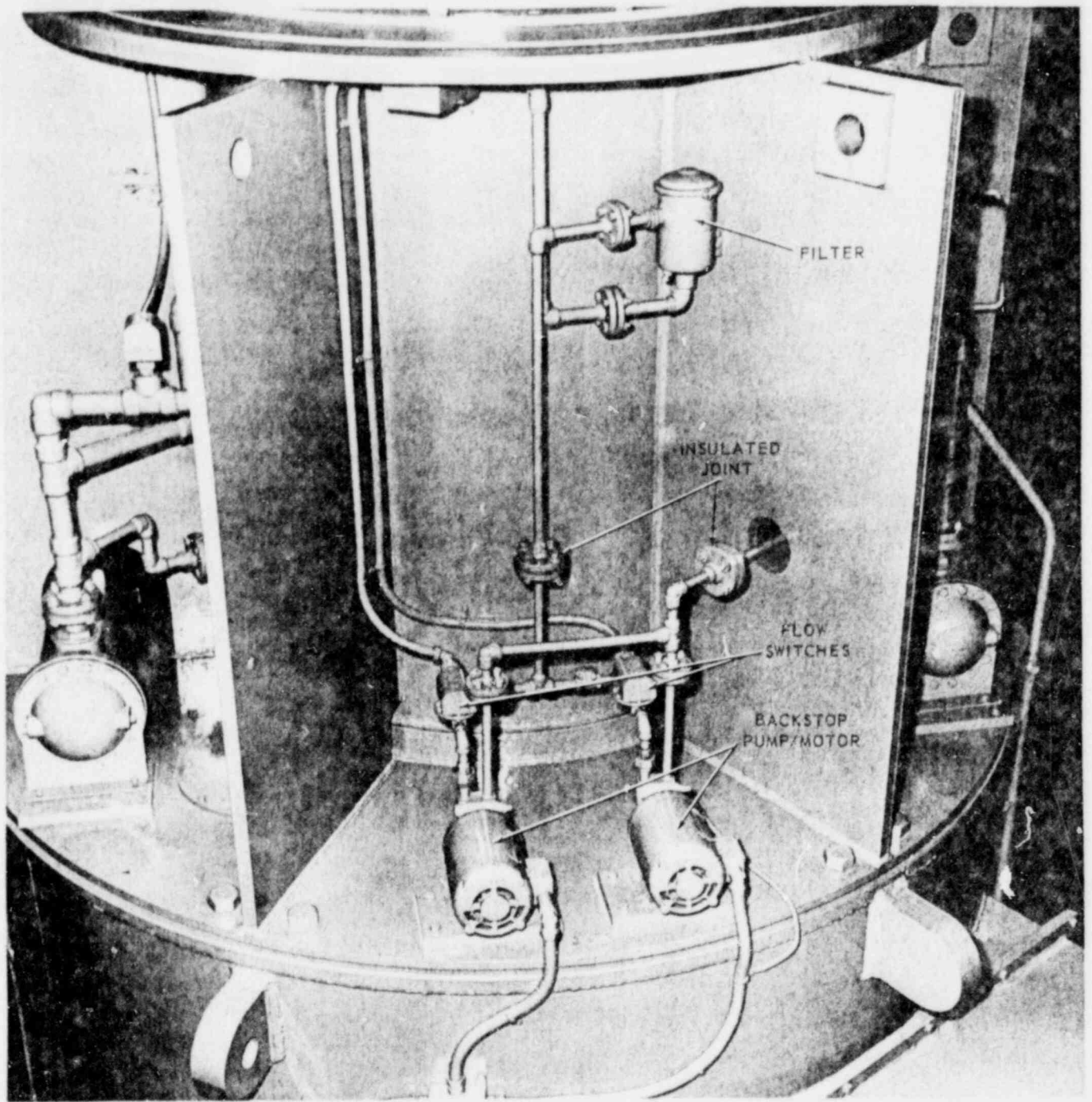


Sect. VI Fig. 3 Interior, upper bearing housing (821)

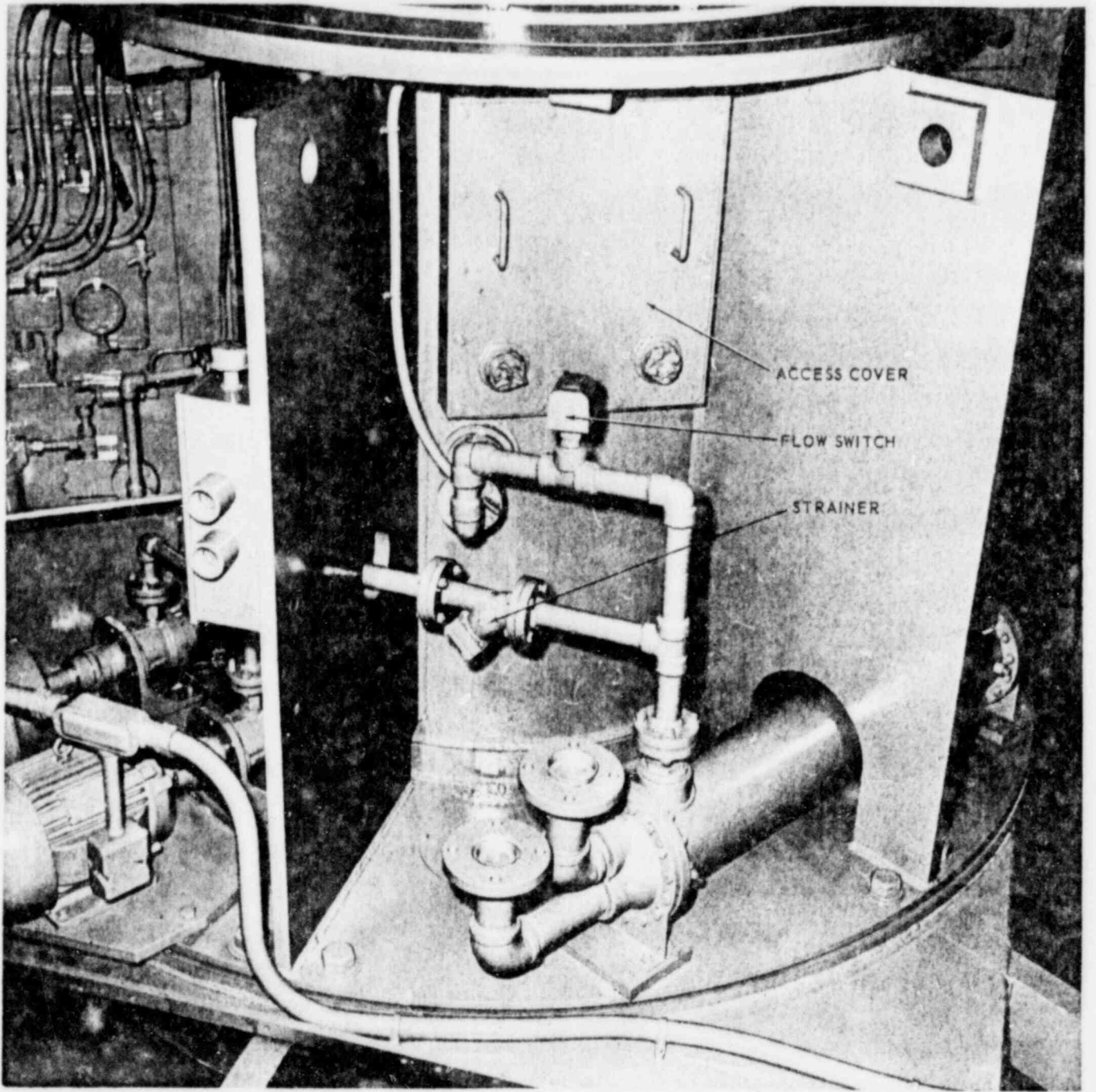
800422J428



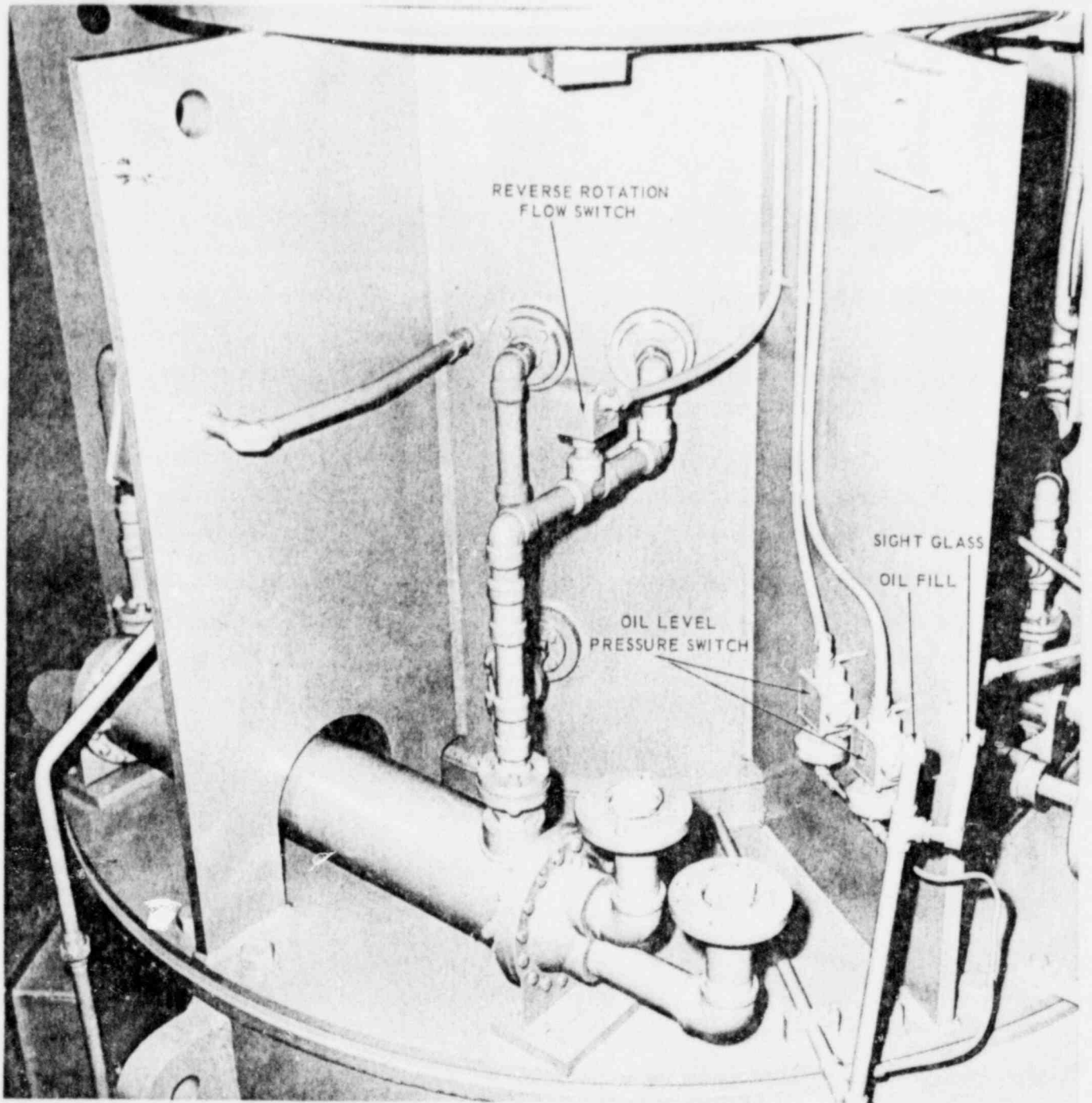
Sect. VI Fig. 4 High Pressure Lift System (821)



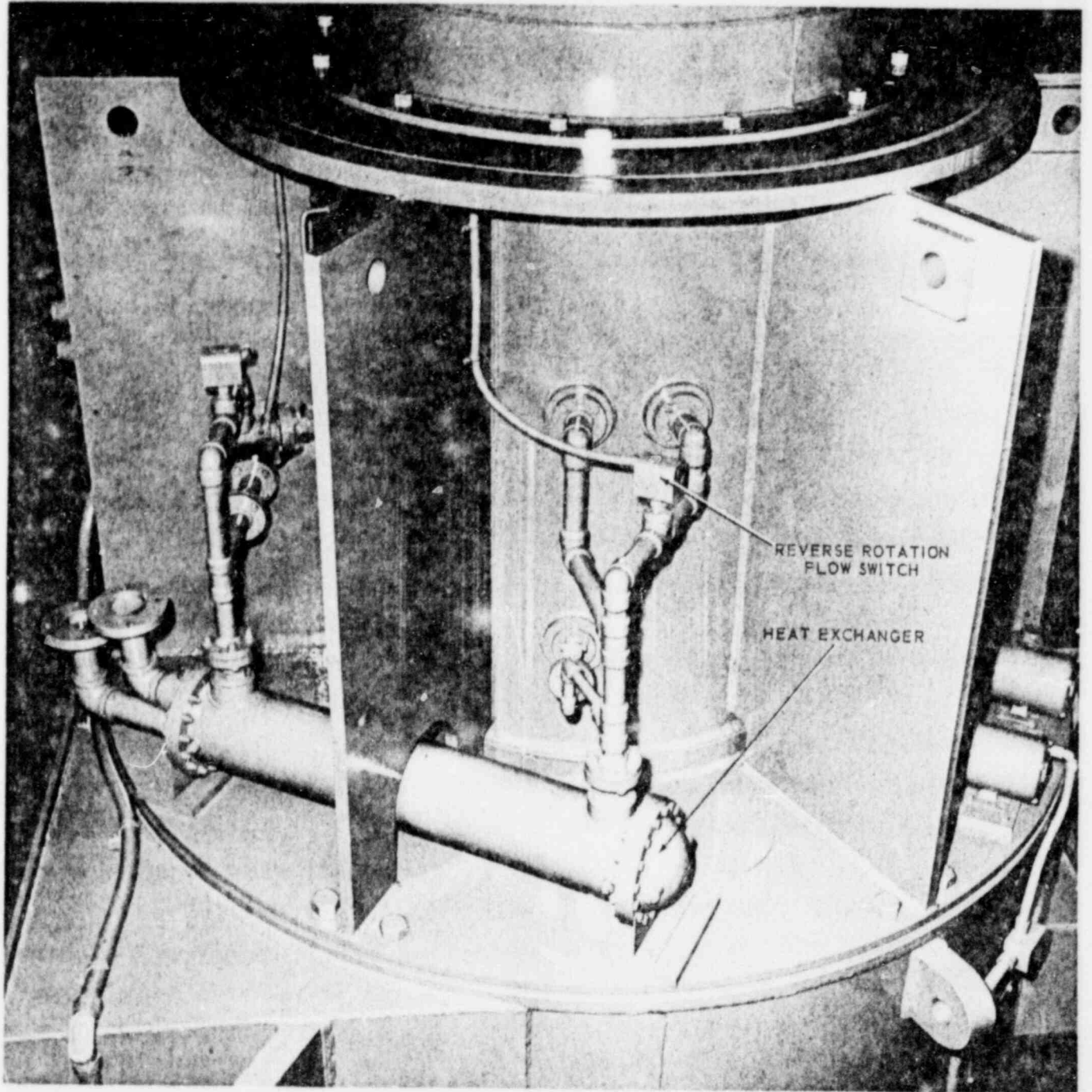
Sect. VI: Fig. 5 Backstop lubrication system (821)



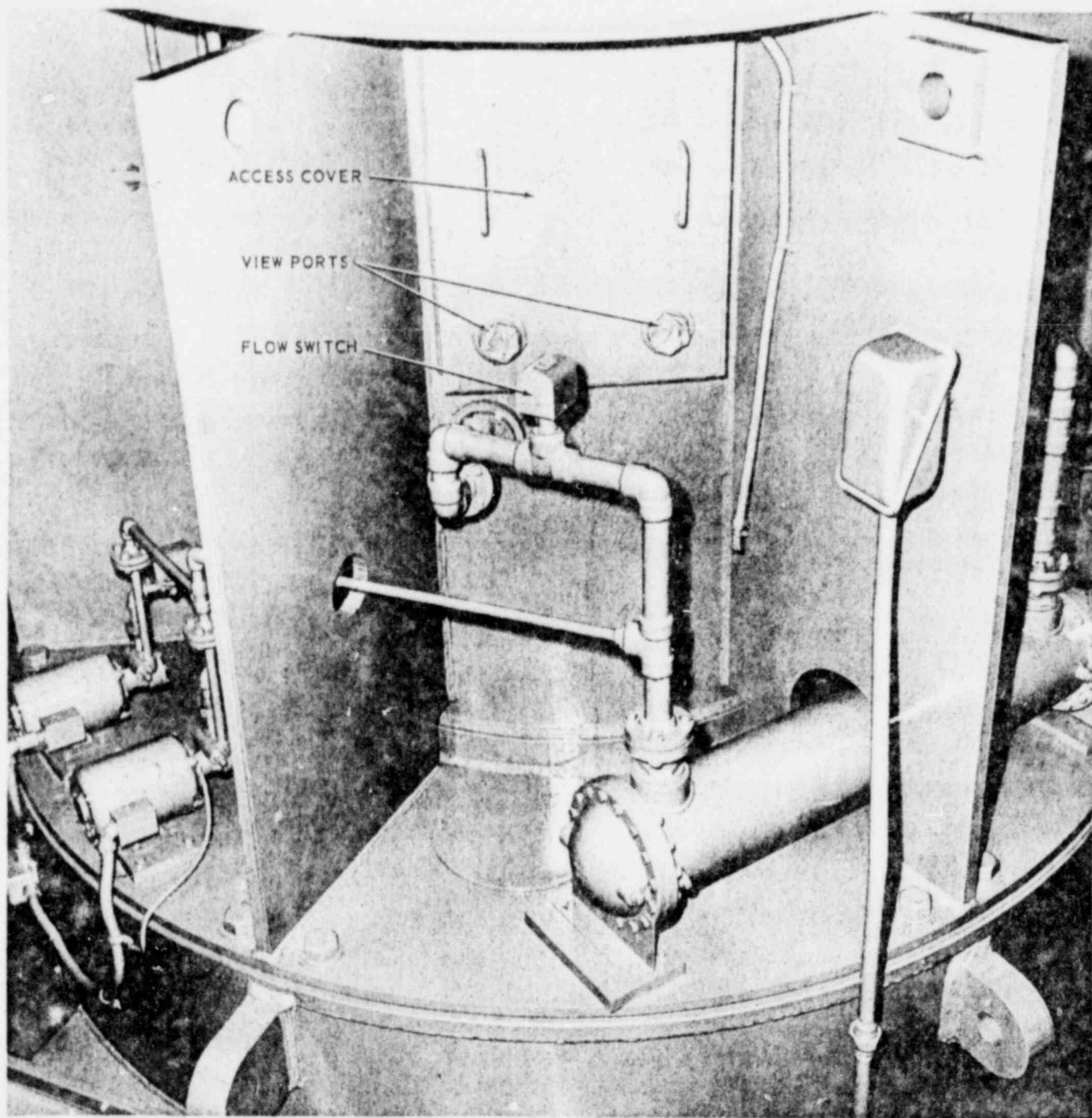
Sect. VI Fig. 6 Upper bearing housing detail (R21)



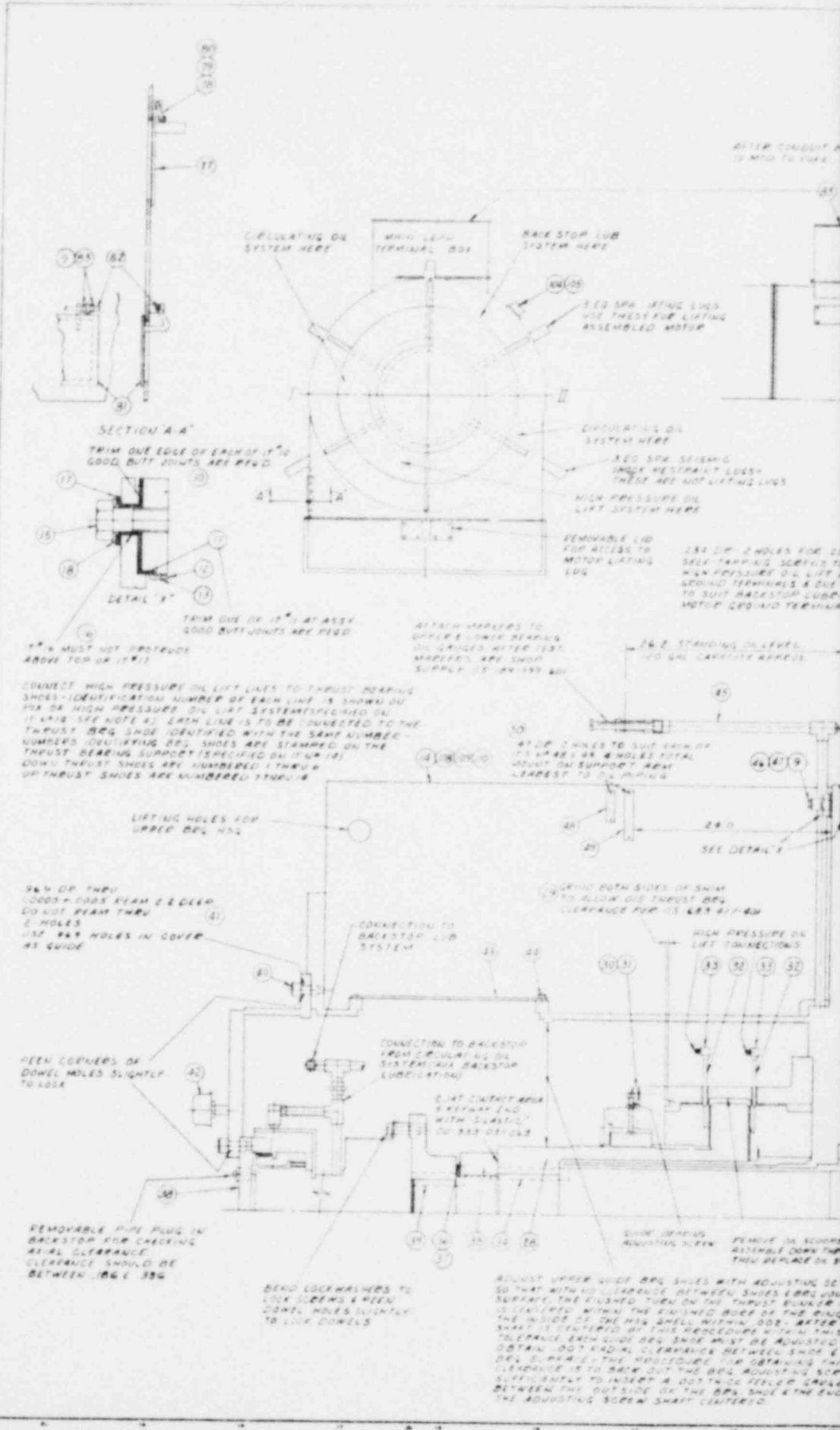
Sect. VI Fig. 7 Upper bearing housing detail (821)



Sect. VI Fig. 8 Upper bearing housing detail (821)



Sect. VI Fig. 9 Upper bearing housing detail (821)



ASSEMBLY RELEASE

					PARENT ASM. PART NO
					04-120-396-503
QTY/ASM	U/M	ITEM NO	COMPONENT PART NAME	CAT NO	COMPONENT PART NO
YES.	EA	1	MOTOR ASY PIX		05-507-989-403
1.0	EA	2	STATOR YOKE		05-682-418-504
1.0	EA	3	STATOR ASY		05-682-502-503
12.0	EA	4	SCR 1.25X2.75		00-611-151-516
1.0	EA	5	ROTOR ASY		05-683-349-503
1.0	EA	6	AIR BAFFLE UPPER		05-223-696-002
1.0	EA	7	AIR BAFFLE -LOWER		05-683-989-501
26.0	EA	8	SCR .375X1.0		00-615-043-466
159.0	EA	9	WASHER .375		00-651-007-230
6.0	EA	10	INSULATION SEGMENT		05-682-798-002
9.0	EA	11	INSULATION STRIP		05-682-799-001
3.0	EA	12	ANGLE		05-683-014-002
36.0	EA	13	SCR .375X.625	X	00-611-365-461 368-462
1.0	EA	14	THRUST BRG HSG ASY		05-682-982-504
12.0	EA	15	SCR 1.5X3.0		00-611-151-616
12.0	EA	16	CYLINDER		05-682-812-001
12.0	EA	17	FLAT RING .125X1.8X3.4		78-781-009-025 00-475-385-711
12.0	EA	18	WASHER 1.5		00-651-001-621
1.0	EA	19	OIL GUARD		05-682-266-503
8.0	EA	20	ADAPTOR UNION		00-717-339-015
22.0	FT	21	TUBERND .375X0.0X.035		00-531-321-102 00-731-071-208
4.0	EA	22	BUSHING 1.0X.875.5		00-711-087-035
2.0	EA	23	NIPPLE 1.0X3.0	38822	00-711-451-259

1	1-7-70/M	SEE SHEET 3		01-0E-21 50	01-0E-21 50	SIMILAR TO	
02	3-6-70	17-12-70	04-813-20	01-0E-21 50	01-0E-21 50	GRH NO	ISSUE
ORIG BY	APPRD.	BOH. WT.	FIN. WT.	CAT NO	PARENT ASSEMBLY NAME	SHEET NUMBER	PARENT ASM. PART NO
IAP					MOTOR ASSY.	1-	04-120-396-503

ASSEMBLY RELEASE

					PARENT ASM. PART NO. 04-120-396-503
QTY/ASM	U/M	ITEM NO	COMPONENT PART NAME	CAT. NO.	COMPONENT PART NO.
2.0	EA	24	ELBOW 90 - 1.0		00-711-315-008
2.0	EA	25	ELBOW 45 - 1.0		00-711-253-008
2.0	EA	26	SINGLE TUBE CLIP		00-691-131-006
3.0	EA	27	SCR .25X.5 SELFTAP		00-615-581-371
1.0	EA	28	THRUST & JOURNAL BRG		05-416-566-006
1.0	EA	29	SHIM		05-682-943-002
12.0	EA	30	SCR 2.0X5.5		00-615-142-736
12.0	EA	31	LOCKWASHER 1.0		00-655-017-052
14.0	EA	32	NIPPLE		05-682-978-003
14.0	EA	33	ELBOW .375X.125		00-711-445-627
1.0	EA	34	BARRECT 1.5X2.0X10.9		60-221-590-109 00-573-047-629
1.0	EA	35	SAFETY NUT		05-197-729-005
1.0	EA	36	LOCKPLATE		05-193-989-004
2.0	EA	37	SCR .375X.75		00-615-043-463
1.0	EA	38	BACKSTOP ASY		05-682-395-504
1.0	EA	39	BARRECT 1.5X2.0X5.3		60-221-590-053 00-573-047-629
12.0	EA	40	SCR 1.0X3.0		00-615-142-726
2.0	EA	41	PIN 1.0X2.0		00-671-115-645
4.0	EA	42	BREATHER		00-795-265-025
2.0	EA	43	COVER BRG ACCESS		05-682-767-503
68.0	EA	44	SCR .375X1.0		00-611-289-466
1.0	EA	45	OIL PIPING -UPPER		05-680-854-816

02 3-6-70 IAP 03 8-13-70 IAP 04 8-13-70 IAP 05 8-21-70 IAP				SIMILAR TO GPH NO. 1-6-71 ISSUE 05	
O.E.G. BY APPROD. EGH. WT. FIN. WT.	CAT. NO. MOTOR ASY.	PARENT ASSEMBLY NAME MOTOR ASY.	SHEET NUMBER 2-	PARENT ASM. PART NO. 04-120-396-503	

ASSEMBLY RELEASE

					PARENT ASM. PART NO.
					04-120-396-503
QTY/ASM	U/M	ITEM NO.	COMPONENT PART NAME	CAT. NO.	COMPONENT PART NO.
1.0	EA	46	CLEAT		05-682-768-003
2.0	EA	47	SCR .375X2.75		00-611-289-480 <i>05-197-902-00</i>
1.0	EA	48	INSUL BRG PLATE	✶	05-188-153-001
2.0	EA	49	OIL INFO PLATE		05-185-056-002
6.0	EA	50	SCR 8X.375 DR		00-615-613-172
1.0	EA	51	BRG HSG. ASY - LOWER		05-682-773-505
1.0	EA	52	INSULATION RING		05-682-798-505
12.0	EA	53	SCR .75X3.0		00-611-289-657
12.0	EA	54	CYLINDER		05-682-812-002
12.0	EA	55	FLAT RING .125X1.1X2.0		78-781-002-011 00-475-385-711
12.0	EA	56	WASHER .75		00-651-007-410
1.0	EA	57	OIL GUARD LOWER		05-682-266-507
1.0	EA	58	OIL BAFFLE		05-683-684-503
12.0	EA	59	SCR .375X1.5		00-615-114-470
1.0	EA	60	LOWER GUIDE BRG		05-681-763-505
8.0	EA	61	SCR .75X2.25		00-611-289-654
1.0	EA	62	COOLING COIL		05-223-505-008
4.0	EA	63	NIPPLER .75X2.0		00-711-451-205
2.0	EA	64	UNION .75		00-711-713-006
2.0	EA	65	PIPE TBE .75X SCH 40X25.0		50-420-031-250 00-573-723-209 00-719-081-303
2.0	EA	66	FLANGE .75 RF FF		00-719-081-003
4.0	EA	67	CLEAT		05-682-768-004
2.0	EA	68	PIPE TBE 40 X 46.5		50-420-031-465 00-573-723-209

IT.66 WAS 00-719-081-003 EFF. (CUST. REQ.) 2-0509-38822					2-0509-38822 2-0509-38824 2-0509-38825 02 B-6070 03 B-13-70 11. 247-48 02-08-1-12-0 04 8-13-70 05 12-30-70					SIMILAR TO	
					GPH NO.		ISSUE				
					1-6-71		08				
ORIG. BY	APPRD.	RGH. WT.	FIN. WT.	CAT. NO.	PARENT ASSEMBLY NAME			SHEET NUMBER	PARENT ASM. PART NO.		
					MOTOR ASY			3-	04-120-396-503		

ASSEMBLY RELEASE

					PARENT ASM. PART NO.
					04-120-396-503
QTY./ASM.	U/M	ITEM NO.	COMPONENT PART NAME	CAT. NO.	COMPONENT PART NO.
2.0	EA	69	90° DEG ELBOW .75		00-711-315-006
2.0	EA	70	COUPLING .75		00-711-011-006
1.0	EA	71	OIL PIPING LOWER		05-680-854-817
1.0	EA	72	PIPE CLAMP		00-691-051-006
4.0	EA	73	COVER -BOTT OF YOKE		05-683-127-003
45.0	EA	74	SCR .375X.75		00-611-289-463
4.0	EA	75	COVER - YOKE WRAPPER		05-680-098-004
1.0	EA	76	COVER -BEHIND BOX		05-680-098-003
1.0	EA	77	DOOR		05-683-375-502
2.0	EA	78	DOOR HANGER		05-683-377-001
4.0	EA	79	PIN COTTER		00-671-191-125
8.0	EA	80	WASHER		00-651-007-146
1.0	EA	81	DOOR		05-683-375-501
1.0	EA	82	STUD		05-680-699-010
37.0	EA	83	NUT .375		00-631-003-106
1.0	EA	84	GROUND STRAP		14-217-332-502
1.0	EA	85	TERM ARR		05-198-450-512
2.0	EA	86	AIR GRILLE		05-314-303-007
32.0	EA	87	SCR 8-32X.75 SELFTAP		00-615-459-178
1.0	EA	88	HEAT EXCHANGER ASY		05-683-711-502
1.0	EA	89	WATER PIPING		05-683-397-802
34.0	EA	90	SCR .5X1.0		00-611-289-544
24.0	EA	91	WASHER .5		00-651-007-300

02 IAP 3-6-70		04 8-13-70		05 12-30-70		SIMILAR TO	
03 3-13-70 IAP		04 8-13-70		05 12-30-70		GPH NO.	ISSUE
03 3-13-70 IAP		04 8-13-70		05 12-30-70		1-6-71	05
ORIG. BY	APPR'D.	RGH. WT.	FIN. WT.	CAT. NO.	PARENT ASSEMBLY NAME	SHEET NUMBER	PARENT ASM. PART NO.
					MOTOR ASY	4-	04-120-396-503

ASSEMBLY RELEASE

					PARENT ASM. PART NO. 04-120-396-503
QTY./ASM.	U/M	ITEM NO	COMPONENT PART NAME	CAT. NO.	COMPONENT PART NO.
1.0	EA	92	AUR DUCT		05-683-363-501
33.0	EA	93	SCR .375X1.75		00-611-289-472
1.0	EA	94	TROUGH		05-683-392-501
2.0	EA	95	BUSHING .75X.5		00-711-087-025
2.0	EA	96	ADAPTOR UNION		00-717-339-020
1.0	EA	97	NIPPLE .75X4.0		00-711-451-213
1.0	EA	98	45 DEG. ELBOW .75		00-711- ²⁵³ 59 -006
3.0	FT	99	TUBE.5 OD X .032 WALL		00-531-321-160
2.0	EA	100	CLIP		00-691-131-008
1.0	EA	101	SCR .25X.75		00-611-289-375
1.0	EA	102	NUT .25		00-631-003-104
1.0	EA	103	ELECTRODE FITTING		00-931-541-001
1.0	EA	104	VIBRATION SWITCH		00-871-641-004
1.0	EA	105	SCR .25X1.0		00-611-289-378
1.0	EA	106	SPACE HEATER ARR		05-682-654- ⁸⁰⁴ 802
1.0	EA	107	THERMOCOUPLE		05-223-991-001
1.0	EA	108	BRG THERMOCOUPLE ARR		05-683-391-802
1.0	EA	109	PROXIMITY SE ARR		05-683-389-804
1.0	EA	110	TERM BOX ARR/SWITHCES		05-683-485-804
1.0	EA	111	RATING PLATE		05-196-868-011
2.0	EA	112	NAME PLATE		00-891-011-430
1.0	EA	113	ROT & PH SEQ PL		05-196-793-003
1.0	EA	114	START RESTRICT PL		05-681-220-009
26.0	EA	115	DR SCR 6X.5		00-615-615-119

02 3-6-70 IAP 05 3-13-70 IAP 17 105 WAS MK # 802 EFF 2-0512-38822 2-0512-38823 2-0512-38824 2-0872-38825 04 8-13-70 05 12-30-70					SIMILAR TO GPH NO. 1-6-71 ISSUE 05		
ORIG. BY	APPR'D.	RGH. WT.	FIN. WT.	CAT. NO.	PARENT ASSEMBLY NAME MOTOR ASY.	SHEET NUMBER 5-	PARENT ASM. PART NO. 04-120-396-503

ASSEMBLY RELEASE

PARENT ASM PART NO
04-120-396-503

QTY/ASM	U/M	ITEM NO	COMPONENT PART NAME	CAT. NO.	COMPONENT PART NO.
1.0	EA	116	SCR .312X.625		00-611-289-417
8.0	EA	117	SCR .5X1.0		00-611-363-544
2.0	EA	118	TUBERN D .75X.5X0.0X2.5		70-010-010-025 00-475-631-065
2.0	EA	119	PIN		05-683-986-002
2.0	EA	120	BUSHING, .5 x .375		00-711-087-017
1.0	EA	121	TERMINAL APP AUX		05-683-485-805
2.0	EA	122	BARRECT 2.25 x 2.25 x 10.5		50-621-002-953 00-573-089-361

2 3-6-70		EFF: 20509-38822 20509-38823 20509-38824 20509-38825		O/E-I-13-70 IT 121 ADDED		20512-38822 20512-38823 20512-38824 20512-38825		04-120-396-503 IT 122 ADDED RGC:-		20512-38822 38825 38824 38826		2-3-71 MAP		ISSUE AS ACTUALLY MADE 12-30-70		SIMILAR TO	
#120 ADDED		EFF: 20509-38822 20509-38823 20509-38824 20509-38825		O/E-I-13-70 IT 121 ADDED		20512-38822 20512-38823 20512-38824 20512-38825		04-120-396-503 IT 122 ADDED RGC:-		20512-38822 38825 38824 38826		2-3-71 MAP		ISSUE AS ACTUALLY MADE 12-30-70		SIMILAR TO	
APP'D.	EGH. WT.	FIN. WT.	CAT. NO.	PARENT ASSEMBLY NAME				SHEET NUMBER		PARENT ASM. PART NO.							
				MOTOR ASY				6-		04-120-396-503							

(1) (1) HAS RAISED FACE	(1) (1) HAS RAISED FACE
(1) (1) HAS RAISED FACE	(1) (1) HAS RAISED FACE
(1) (1) HAS RAISED FACE	(1) (1) HAS RAISED FACE
(1) (1) HAS RAISED FACE	(1) (1) HAS RAISED FACE
(1) (1) HAS RAISED FACE	(1) (1) HAS RAISED FACE
(1) (1) HAS RAISED FACE	(1) (1) HAS RAISED FACE
(1) (1) HAS RAISED FACE	(1) (1) HAS RAISED FACE
(1) (1) HAS RAISED FACE	(1) (1) HAS RAISED FACE
(1) (1) HAS RAISED FACE	(1) (1) HAS RAISED FACE
(1) (1) HAS RAISED FACE	(1) (1) HAS RAISED FACE
(1) (1) HAS RAISED FACE	(1) (1) HAS RAISED FACE
(1) (1) HAS RAISED FACE	(1) (1) HAS RAISED FACE
(1) (1) HAS RAISED FACE	(1) (1) HAS RAISED FACE
(1) (1) HAS RAISED FACE	(1) (1) HAS RAISED FACE
(1) (1) HAS RAISED FACE	(1) (1) HAS RAISED FACE
(1) (1) HAS RAISED FACE	(1) (1) HAS RAISED FACE
(1) (1) HAS RAISED FACE	(1) (1) HAS RAISED FACE
(1) (1) HAS RAISED FACE	(1) (1) HAS RAISED FACE
(1) (1) HAS RAISED FACE	(1) (1) HAS RAISED FACE
(1) (1) HAS RAISED FACE	(1) (1) HAS RAISED FACE
(1) (1) HAS RAISED FACE	(1) (1) HAS RAISED FACE
(1) (1) HAS RAISED FACE	(1) (1) HAS RAISED FACE
(1) (1) HAS RAISED FACE	(1) (1) HAS RAISED FACE
(1) (1) HAS RAISED FACE	(1) (1) HAS RAISED FACE
(1) (1) HAS RAISED FACE	(1) (1) HAS RAISED FACE
(1) (1) HAS RAISED FACE	(1) (1) HAS RAISED FACE

2 HOLES FOR 4.0" CONDUIT FOR SERVICE CABLES TO 2 STATOR LEADS EACH LEAD IS ONE 3/8" THK COPPER BAR WITH 1 HOLES PER 5' BOLTS IS SPACED FOR SERVICE CONN. CURRENT TRANSFORMERS & 1/2" DIA. CAPACITORS ARE MOUNTED IN THE BOX CTS ARE INSTANTANEOUS SIZE WHICH TIME PERMITTED FOR SELF-BALANCING TYPE DIFFERENTIAL RELAY PROTECTION SINCE NO SIGNAL VOLTAGE APPEARS IN THE CT SECONDARY UNTIL A DIFFERENTIAL RESULT OCCURS, A RATIO OF 100 TO 5 AMP RATIO IS USED AS STANDARD FOR ALL MOTOR SIZES USING THIS METHOD OF RELAYING 2 SURGE CAPACITORS ARE ONE 250V 5000 UF & 200V 25000 UF MICROFARAD SINGLE HOLES EACH-HAVING AN 875V VOLTS VOLTAGE OF 400 VOLTS & A MAX 875V VOLTAGE ABILITY OF 1500 VOLTS VOLTAGE ARE RAISED TO THESE VOLTAGES MAY BE USED WITH OTHERS SHOWN OR UNRECORDED NEUTRAL SYSTEM

1.50 DIA. 12 HOLES EQUALLY SPACED IN BOTTOM FLANGE OF YOLK FOR 1/2" DIA. HOLD DOWN BOLTS

ONE HOLES FOR 3/4" CONDUIT FOR ELECTRICAL CABLES TO 8-10 250V STATOR LEADS AND 8 AMP CURRENT TRANSFORMERS 2 THERMOCOUPLES IN UPPER END AND 2 THERMOCOUPLES IN LOWER END AND 8 ONE THERMOCOUPLE IN LOWER END AND 12 EXTRA POINTS ON THE TERMINAL BLOCKS CAN BE USED OR PUMP THERMOCOUPLES SEE A-C DWS 05-416-741-407 DETAIL 'A' FOR CONNECTIONS

3 1/2" DIA. LIFTING LUGS ON MOTOR FRAME THESE ARE CAPABLE OF LIFTING ENTIRE MOTOR

OIL SAUCE FILL DOWN THE UPPER LOWER BEARING HOUSINGS A MODEL 72-141'S STATOR OIL PRESSURE SWITCHES 2 PRESSURE SWITCHES EACH ONE UPPER END OIL LEVEL A LOWER END OIL LEVEL ONE FOR ALL LEVEL 5/16" DIA. 1/2" DIA. 1/2" DIA. ONE FOR OIL LEVEL DROOP EACH PRESSURE SWITCH HAS 1/2" NPT TOP HOLES FOR ELECTRICAL CONNECTIONS 2 2 1/2" DIA. SWITCHES 110V 60 HPS 220 VOLTS AC

ELECTRICAL CONVS TO HIGH PRESSURE OIL LIFT PUMP MOTOR AC MOTOR 220V 10 HP 440 VOLTS 3 PH. 60CY HAS 1/2" NPT TOP HOLES CONDUIT ENTRANCE DC MOTOR 220V 1/2 HP 125 VOLT HAS 2" NPT TOP HOLES CONDUIT ENTRANCE

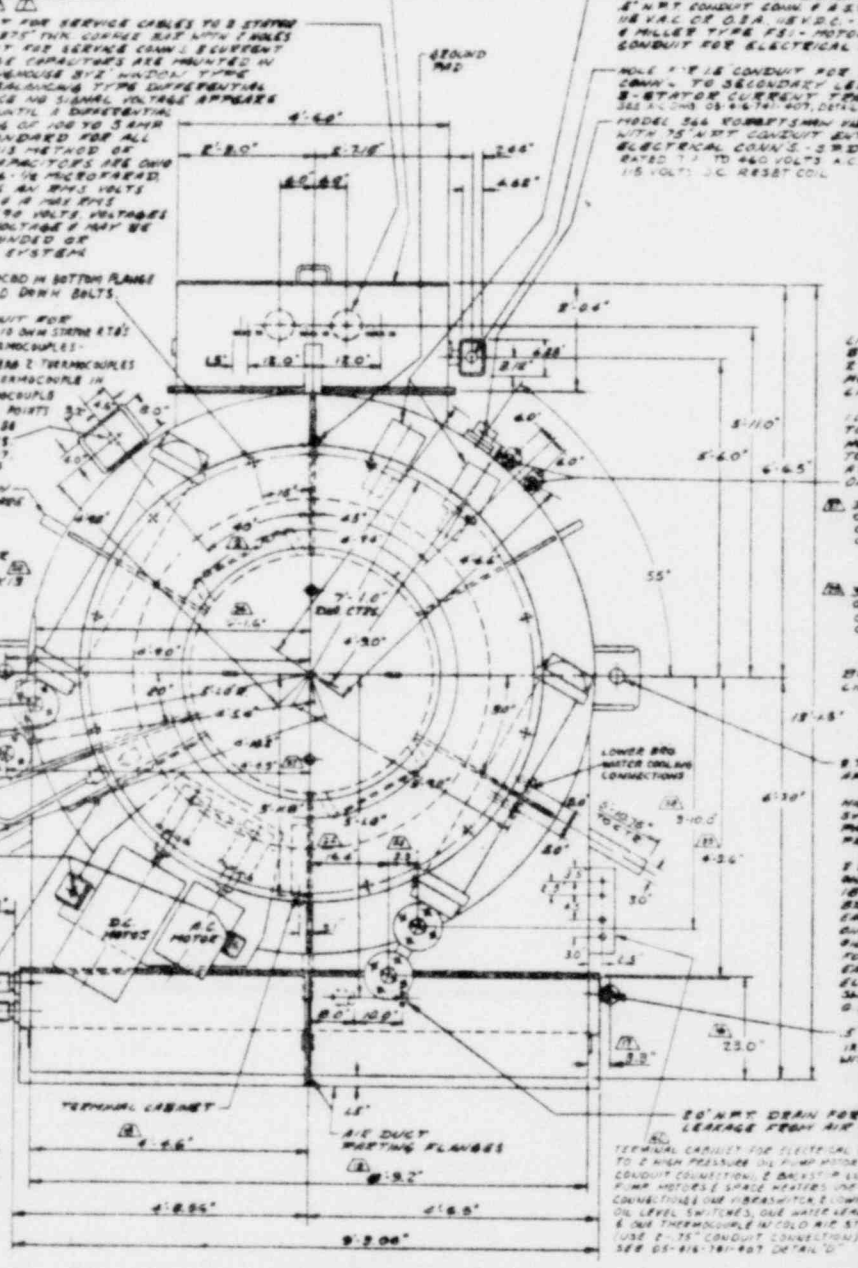
HIGH PRESSURE OIL LIFT SYSTEM CENTER MODEL 7048-A PRESSURE SWITCHES CONN. TO HIGH PRESSURE OIL LIFT MANIFOLD & 2 1/2" DIA. MODEL 7048-A PRESSURE SWITCHES CONN. TO OIL PUMPS - EACH SWITCH HAS ONE 1/2" NPT HOLES FOR ELECTRICAL CONVS & 2 1/2" DIA. PIPING OF SWITCHES IS 1/2" DIA. 1/2" OR 3/4" DIA. AC 3 PHPS 440 VOLTS AC 3 PHPS 220 VOLTS AC

MAIN TERMINAL BOX REF. - SEE A-C DWS 05-416-741-406

BACKSTOP LUBRICATION SYSTEM FOR TAIL WIND MOUNT AS THE SYSTEM STARTED BEFORE THE DEF. STATOR MOTOR IS ROTATING CONVENTIONAL PUMP MOTOR ONE 440 VAC 3 PH. 60 HRT. EACH 1" NPT CONDUIT CONN. & 2 1/2" DIA. VAC. OF 0.5A. HEV.C.C. - 4 HOLES TYPE FS. - MOTOR CONDUIT FOR ELECTRICAL

HOLES 1" DIA. CONDUIT FOR A CONN. TO SECONDARY LEAD 2- STATOR CURRENT TRANSFORMERS SEE A-C DWS 05-416-741-407 DETAIL 'A'

MODEL 366 COMPRESSOR WITH 75 NPT CONDUIT FOR ELECTRICAL CONVS. - 3 PH. 440 VOLT TO 440 VOLTS AC 1/5 VOLT J.C. 46387 COIL



TOP VIEW

5/8" DIA. 2 HOLES PER LEAD FOR ATTACHMENT OF SERVICE CABLES

DETAIL 'Z' STATOR LEADS

ESTIMATED WEIGHTS:

STATOR	46,100
ROTOR	30,550
UPPER BEG COMP	22,700
LOWER BEG COMP	1,000
COOLERS (2)	1,400
COVERS	1,100
TOTAL	102,850

- NOTES:**
1. THE BASIC MOTOR IS GOOD FOR EITHER DIRECTION OF ROTATION. THE MOTOR IS EQUIPPED WITH AN ANT-REREVERSE DEVICE WHICH ALLOWS ROTATION ONLY IN THE COUNTER CLOCKWISE DIRECTION WHEN RUNNING DOWN AT TOP OF WATER.
 2. UPPER BEG IS A SHUTTER-TYPE BEG (UP & DOWN THROST) WITH ADJUSTABLE 4 SHOE GUIDE BEG USE A HIGH QUALITY PETROLEUM OIL HAVING BEST OXIDATION INHIBITORS & A VISCOSITY OF 275 TO 285 S.S.U. AT 100°F. CAPACITY OF UPPER BEG RESERVOIR - 120 GALLONS APPROX.
 3. LOWER BEG IS A SHOE-TYPE GUIDE BEG USE A HIGH QUALITY PETROLEUM OIL HAVING BEST OXIDATION INHIBITORS & A VISCOSITY OF 275 TO 285 S.S.U. AT 100°F. CAPACITY OF LOWER BEG RESERVOIR - 120 GALLONS APPROX.
 4. FURNISH 76 G.P.M. OF WATER OF 105°F MAX TEMP AT 100 P.S.I. MAX WORKING PRESSURE TO THE MOTOR AIR COOLERS. 2 1/2" DIAM WATER IS SUPPLIED. THE QUANTITY REQUIRED IS 50 G.P.M. TO EACH OF THE 2 UPPER BEARING COOLERS.
 5. FURNISH 60 G.P.M. OF WATER OF 105°F MAX TEMP AT 100 P.S.I. MAX WORKING PRESSURE TO EACH UPPER BEG OIL COOLER. IF 85°F WATER IS SUPPLIED THE QUANTITY REQUIRED IS 50 G.P.M. TO EACH OF THE 2 UPPER BEARING COOLERS.
 6. FURNISH 6 G.P.M. OF WATER OF 105°F MAX TEMP AT 100 P.S.I. MAX WORKING PRESSURE TO THE LOWER BEG OIL COOLER. IF 85°F WATER IS SUPPLIED THE QUANTITY REQUIRED IS 6 G.P.M.
 7. ARRANGE COOLER TUBING TO PREVENT ACCIDENTAL SYMPHONING OF WATER. COOLER MUST BE VERY FULL WITH WATER TO PREVENT CORROSION OF TUBES.
 8. UPPER BEG HOUSING IS INSULATED. CUSTOMER TO PROVIDE INSULATED JOINTS IN CONDUIT CONNECTION TO TERMINAL BOX FOR SWITCHES ON UPPER BEARING HOUSING.

MUST BE CAPABLE TO OPERATE AT HIGH PRESSURE AS LIFT UP IS ENHANCED & SHUT AT OPERATING SPEED.

ELECTRICAL
 3 PHASE
 480 VOLTS
 3 PHASES
 3 WIRE CONNECTIONS
 3 WIRE SERVICE AND CONTACTS
 208 V 4 @ 5 VOLTS D.C.

DRIVE HOLES IN UPPER HOUSING - 8 SETS OF HOLES SMALLER DIMENSIONS BE ARE CAPABLE OF WITHSTANDING HEAVY

KEY FOR ELECTRICAL COILS SPACE HEATERS 1/2" DIA. 1/2" DIA. 1/2" DIA. PROVIDE OUTPUT OF 1/2" DIA. 1/2" DIA. 1/2" DIA. CONNECT TO 1/2" DIA. HEATER

180° FLAT FACE RING FLANGE WATER OUTLET FOR BACK & UPPER BEARING COOLERS

VENTS
 180° FLAT FACE RING FLANGE WATER INLET FOR EACH UPPER BEARING COOLERS

HOUSING CORNER TYPING LOG

UPPER BEG HOUSING ACCESS DOORS WITH REMOVING PARTS TOP IS 180° DIA. 2 1/2" DIA.

END HOLES 90° AT 1/2" SUPPORT PADS

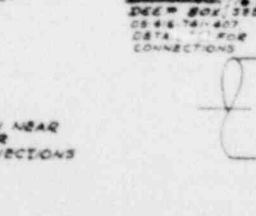
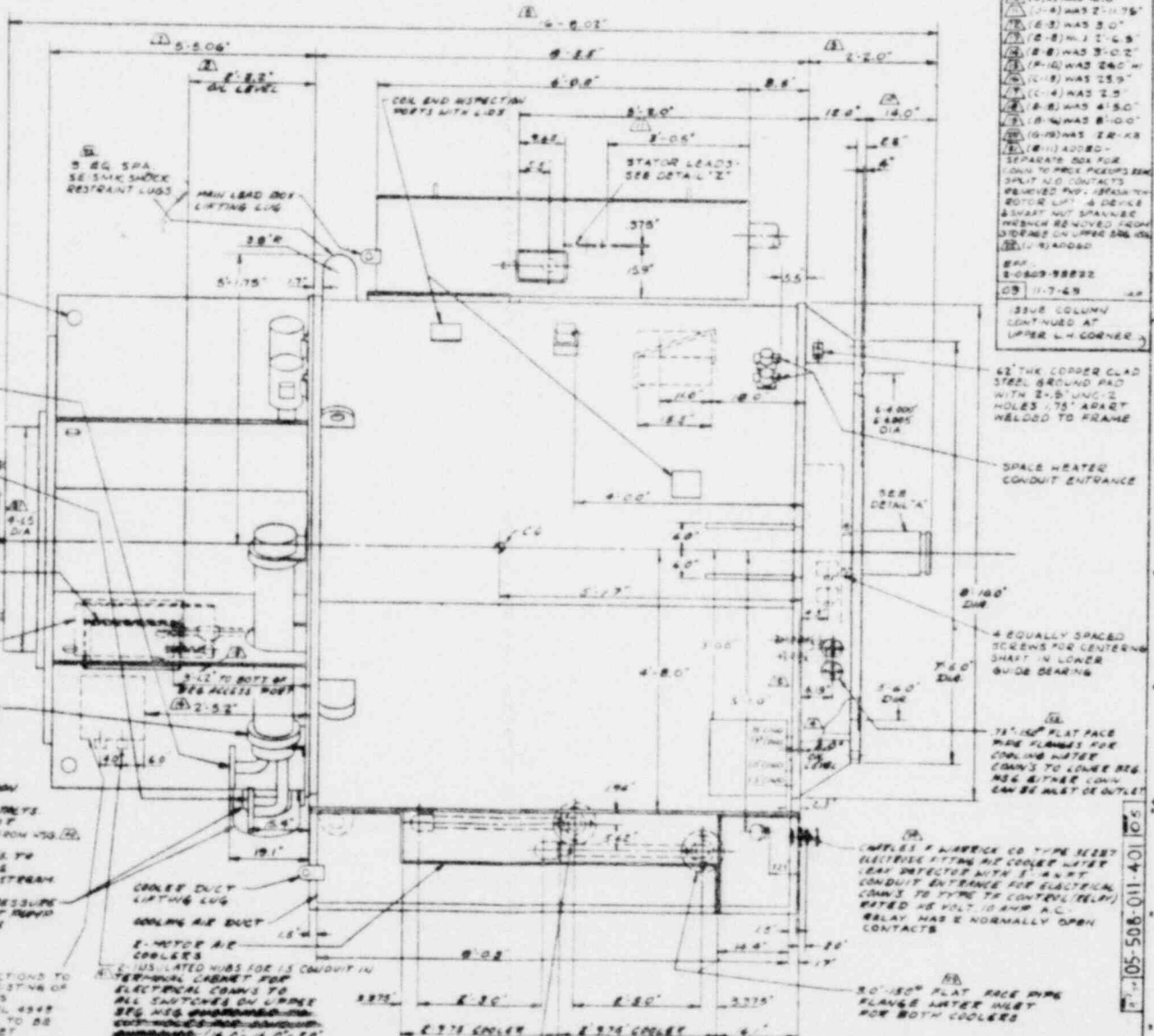
PRESSURE ON LEFT SIDE COMPLETE WITH SHUTTER SWITCHES & GAGES

WINDING MODEL IN 208-18-2P-2W 2 WINDING TEST ENCLOSURES SHUTTER SWITCH UPON HOUSING OPERATING AS LOWER BEG HOUSING HAS 1/2" DIA. SWITCH TO INDICATE FLOW & 1/2" DIA. SWITCH GENERAL MOTOR INDICATING SWITCH HAS 8 1/2" DIA. SWITCH FOR ELECTRICAL COILS TO 1/2" DIA. SWITCH

WATER INLET HIGH PRESSURE OIL LIFT MOTOR

INSULATED HOUSING ACCESS DOORS WITH REMOVING PARTS TOP IS 180° DIA. 2 1/2" DIA.

SPACE AVAILABLE ON NEAR & FAR SURFACES FOR SERVICE CABLE CONNECTIONS



01 1-10-65
 02 9-10-65
 03 11-7-65

01 (K-10) WAS 17' 11 1/2"
 02 (K-10) WAS 17' 11 1/2"
 03 (K-10) WAS 17' 11 1/2"
 04 (K-10) WAS 17' 11 1/2"
 05 (K-10) WAS 17' 11 1/2"
 06 (K-10) WAS 17' 11 1/2"
 07 (K-10) WAS 17' 11 1/2"
 08 (K-10) WAS 17' 11 1/2"
 09 (K-10) WAS 17' 11 1/2"
 10 (K-10) WAS 17' 11 1/2"
 11 (K-10) WAS 17' 11 1/2"
 12 (K-10) WAS 17' 11 1/2"
 13 (K-10) WAS 17' 11 1/2"
 14 (K-10) WAS 17' 11 1/2"
 15 (K-10) WAS 17' 11 1/2"
 16 (K-10) WAS 17' 11 1/2"
 17 (K-10) WAS 17' 11 1/2"
 18 (K-10) WAS 17' 11 1/2"
 19 (K-10) WAS 17' 11 1/2"
 20 (K-10) WAS 17' 11 1/2"
 21 (K-10) WAS 17' 11 1/2"
 22 (K-10) WAS 17' 11 1/2"
 23 (K-10) WAS 17' 11 1/2"
 24 (K-10) WAS 17' 11 1/2"
 25 (K-10) WAS 17' 11 1/2"
 26 (K-10) WAS 17' 11 1/2"
 27 (K-10) WAS 17' 11 1/2"
 28 (K-10) WAS 17' 11 1/2"
 29 (K-10) WAS 17' 11 1/2"
 30 (K-10) WAS 17' 11 1/2"

PROPERTY OF ALLIANCE ELECTRIC CO. 3005 N.E. 121 ST. OKLAHOMA CITY, OKLA. 73119

2 1842-38222

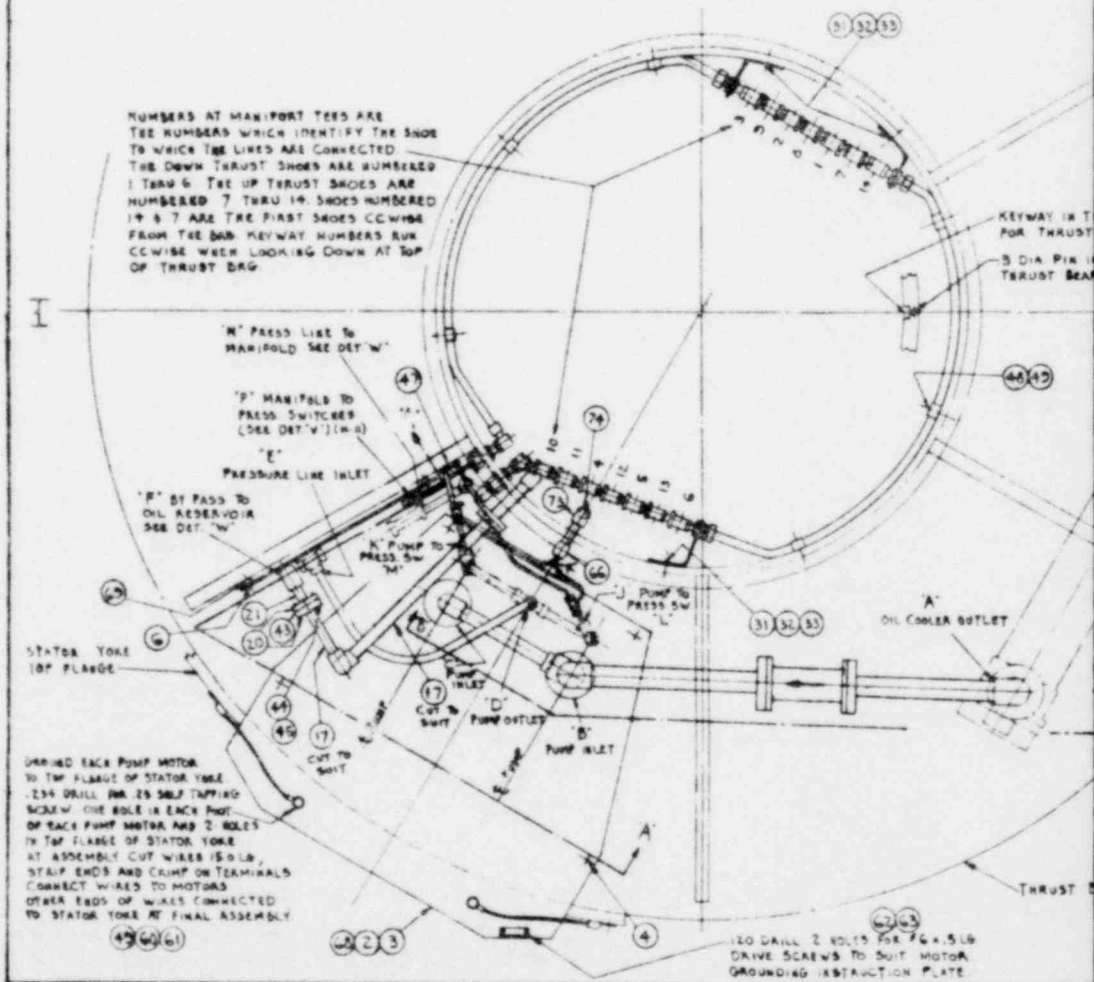
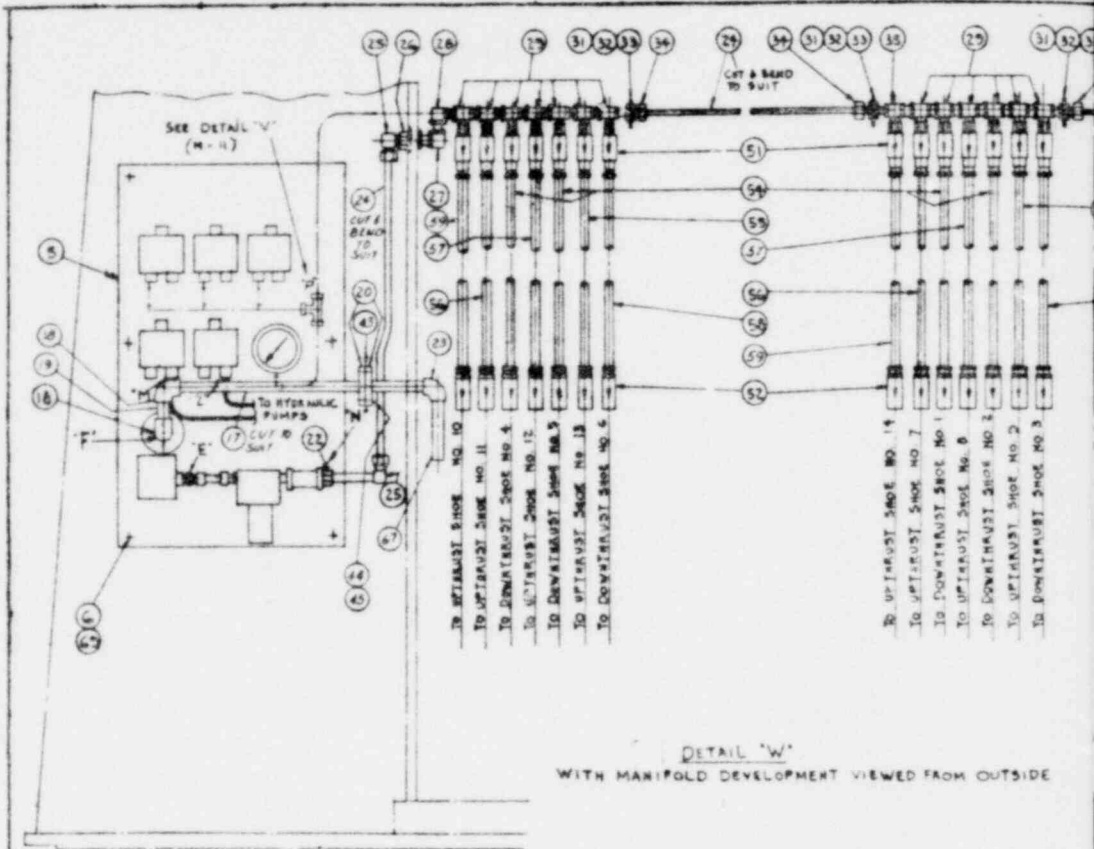
9000 HORSEPOWER REACTOR
 CALANT PUMP MOTOR OUTLINE

9000 HP 1185 RPM 6600 K
 60 SA 3 PH 60 CY

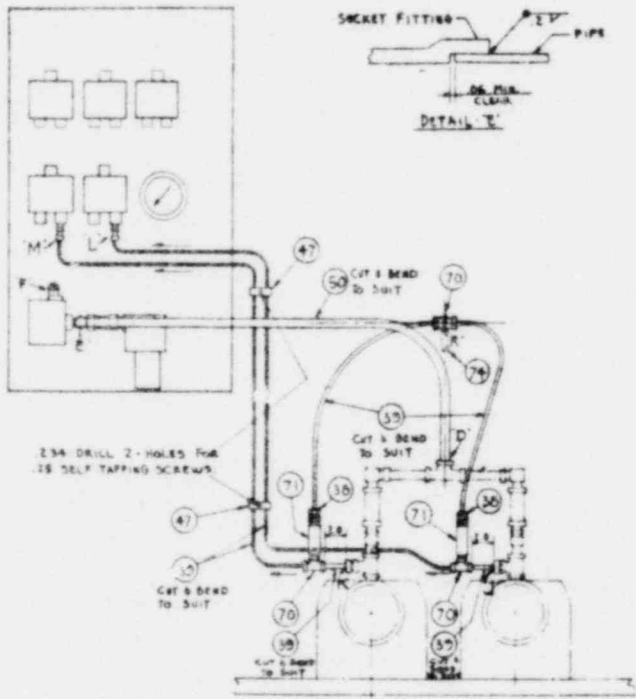
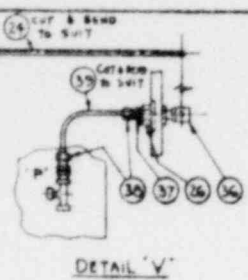
ARIZONA POWER & LIGHT CO.
 S.E. EQUIPMENT NUMBERS:
 RC-P1A, RC-P1B, RC-P1C
 RC-P1A, RC-P1B, RC-P1C

BECKETT EQUIPMENT NUMBERS:
 P22, P23, P24, P25

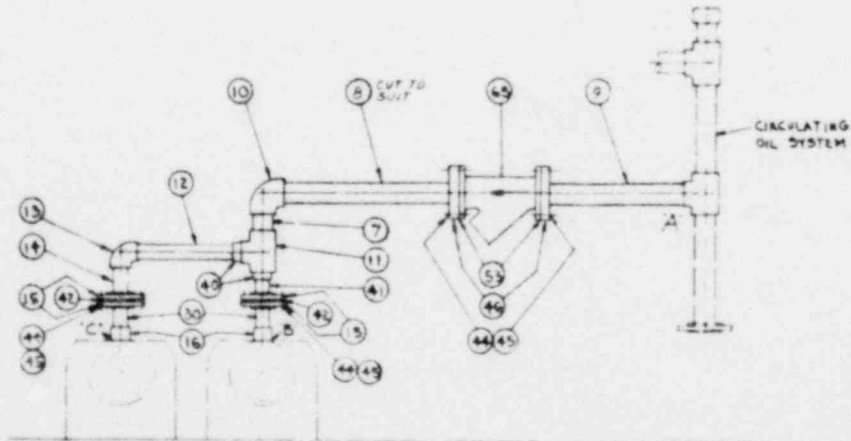
05-508-011-401



- NOTES:**
1. ALL SOCKET PIPE FITTINGS TO BE WELDED TO PIPE PER DETAIL 'E'
 2. WELDING ELECTRODES TO BE PER 50-200-017 MK 001 OR 004
 3. CLEAN TUBING, PIPING, AND FITTINGS TO PREVENT DIRT AND FOREIGN PARTICLES FROM DAMAGING BEARING SROES. FLUSHING AND CHECKING FOR LEAKS IS SPECIFIED ON UPPER BAG H50 ASSEMBLY
 4. COAT ALL SCREWED PIPE JOINTS WITH PIPE JOINT COMPOUND (DO NOT USE TEFLON TAPE)
5. SOCKET WELDING FITTINGS ARE USED FOR ALL PIPE FITTING APPLICATIONS FOR WHICH SOCKET WELDING FITTINGS ARE AVAILABLE. TUBING FITTINGS ARE FLOOR FITTINGS WITH COLLARABLE SELF-SEAT JOINTS & SELF-FLARE TUBE JOINTS



VIEW 'A-A'
 PRESSURE PIPING BETWEEN VALVE PANEL AND HYDRAULIC PUMPS



VIEW 'B-B'
 PIPING BETWEEN CIRCULATING OIL SYSTEM AND HYDRAULIC PUMPS

PROPERTY OF: PROJECT OF: ALLIS-CHALMERS MFG. CO.		HIGH PRESSURE OIL LIFT SYSTEM FIX	
3006		38822	
DESIGNED BY: [blank]		DATE: [blank]	
CHECKED BY: [blank]		APPROVED BY: [blank]	
DRAWN BY: [blank]		SCALE: [blank]	
MATERIALS: [blank]		PART NO: 05-507-977-404	

8004220440
 Attachment 3

05-507-977-404 01

ASSEMBLY RELEASE

					PARENT ASM. PART NO
					05-682-996-804
QTY./ASM.	U/M	ITEM NO	COMPONENT PART NAME	CAT. NO	COMPONENT PART NO
YES.	EA	1	HI PRES OIL LIFT PIX		05-507-977-404
1.0	EA	2	HYDRAULIC PUMP SYS		05-682-736- ⁰⁰⁵ 004
1.0	EA	3	MOTOR -SEE NOTE 1 BELOW		05-682-346-006
4.0	EA	4	SCR .75X2.0		00-611-289-653
1.0	EA	5	VALVE PANEL		05-682-737-002
6.0	EA	6	SCR .375X1.5		00-611-289-470
1.0	EA	7	STR PIPE 1.5X SCH 40X2.8		60-057-220-028 00-573-731-215
1.5	FT	8	PIPE 1.5X SCH 40		00-573-731-215
1.0	EA	9	STR PIPE 1.5X SCH 40X9.7		60-057-220-097 00-573-731-215
1.0	EA	10	ELBOW 90 DEG SOC 1.5		00-715-531-012
1.0	EA	11	TEE PIPE SOC 1.5		00-715-601-012
1.0	EA	12	STR PIPE 1.0X SCH 40X12.1		60-057-200-121 00-573-731-211
1.0	EA	13	ELBOW 90 DWG SOC 1.0		00-715-531-008
1.0	EA	14	STR PIPE 1.0X SCH 40X3.7		60-057-200-037 00-573-731-211
4.0	EA	15	FLANGE PIPE SOC 1.0		00-719-511-004
2.0	EA	16	ADAPTER 1.312-12X1.0		00-717-827-651
2.5	FT	17	PIPE .75X SCH 40		00-573-731-209
2.0	EA	18	ELBOW 90 DEG SOC .75		00-715-531-006
1.0	EA	19	STR PIPE .75X SCH 40X2.5		60-057-190-025 00-573-731-209
4.0	EA	20	FLANGE PIPE SOC .75		00-719-511-003
					38822
1	12-22-69	M	2-0509-38823 2-0509-38824 2-0509-38825 02 3-2-70 IAP SEE SHEET 4 01 8-25-70 EO		
IT #2 WAS 05-682-736-004 SEE SHEET 4 EFF 2-0509-38822			SIMILAR TO GPH NO 11-3-70 ISSUE 03		
ORIG. BY RD	APPRD. IAP	RGH. WT.	FIN. WT.	PARENT ASSEMBLY NAME HI PRES OIL LIFT SYS	SHEET NUMBER 1-
					PARENT ASM. PART NO 05-682-996-804

ASSEMBLY RELEASE

					PARENT ASM. PART NO.
					05-682-996-804
QTY./ASM	U/M	ITEM NO.	COMPONENT PART NAME	CAT. NO.	COMPONENT PART NO.
1.0	EA	21	STR PIPE T O E .75X SCH 40X4.0		50-422-050-040 00-573-731-209
1.0	EA	22	BUSHING .75X.375		00-711-121-651
1.0	EA	23	ELBOW 90 DEG .75		00-711-315-006
13.0	FT	24	TUBE .50 OD X.065 TH		00-573-760-121
2.0	EA	25	ELBOW 90 DEG FLODAR BAX2000-8		00-717-585-433
2.0	EA	26	BULKHEAD FLODAR MK 113-8 ATOF .75 SAE X.375 NPTFI		00-717-393-651
1.0	EA	27	ELBOW 90 DEG FLODAR MK 201-8 KTOK .75 SAE FLODAR PORT X.75 SAE FLODAR PORT		00-717-157-652
1.0	EA	28	ELBOW 90 DEG FLODAR MK 206-8 SH TO K .75 SAE SWIVEL HD. X.75 SAE FLODAR PORT		00-717-157-651
13.0	EA	29	TEE FLODAR MK 300 M06 SH 8 K8		05-682-977-001
2.0	EA	30	STR PIPE T O E 1.0X SCH 40 X1.8		50-422-060-018 00-573-731-211
3.0	EA	31	BRACKET		05-683-004-001
6.0	EA	32	SCR .375X.625		00-611-365-461
6.0	EA	33	WASHER .375		00-651-001-230
3.0	EA	34	BULKHEAD FLODAR MK 115-8 A TO BAX .75 SAE X .5 TUBE		00-717-393-650
1.0	EA	35	TEE FLODAR MK 300 M06-K8-K8		05-682-977-002

02 3-2-70 RD
03 8-25-70 RD

SIMILAR TO
GPH NO. 11-3-70
ISSUE 03

ORIG. BY	APP'D.	RGH. WT.	FIN. WT.	CAT. NO.	PARENT ASSEMBLY NAME	SHEET NUMBER	PARENT ASM. PART NO.
					HI PRES OIL LIFT SYS	2-	05-682-996-804

ASSEMBLY RELEASE

					PARENT ASM. PART NO. 05-682-996-804
QTY/ASM.	U/M	ITEM NO.	COMPONENT PART NAME	CAT. NO.	COMPONENT PART NO.
1.0	EA	36	ELBOW 90 DEG FLODAR MKX202-8 .75 SAE FLODAR PORT X .5 TUBE		00-717-157-650
1.0	EA	37	BUSHING .375 NPTFEX .25 NPTF1		00-711-121-626
4.0	EA	38	ADAPTER FLODAR BAX 1000-4-4 .25 TUBE X.25 NPTFE		00-717-829-210
20.0	FT	39	TUBE .2500 X.049 WAL6		00-573-760-008
2.0	EA	40	INSERT RED 1.5X1.0		00-715-471-050
1.0	EA	41	STR PIPE 1.00 X SCH 40X2.5		60-057-200-025 00-573-731-211
2.0	EA	42	GASKET		00-653-211-499
2.0	EA	43	GASKET		00-653-211-456
24.0	EA	44	SCR H H .5X2.0		00-611-289-552
24.0	EA	45	NUT .5		00-631-003-108
2.0	EA	46	FLANGE 1.5 SOC		00-719-361-206
2.0	EA	47	CLIP W/SCREW		00-691-181-105
6.0	EA	48	CLIP		00-691-131-008
10.0	EA	49	SCR .25X.5 SELF TAP		00-615-581-371
3.0	FT	50	TUBE .75 OD X.083 WALL		00-573-760-254
14.0	EA	51	FLOW REGULATOR 190AT 6-0.4 V MATCHED SET		00-773-721-004
14.0	EA	52	VALVE		05-682-738-001
2.0	EA	53	GASKET 5.0X2.0X.06		16-236-194-005
4.0	EA	54	FLEXIBLE HOSE 45.5		05-683-364-009
2.0	EA	55	FLEXIBLE HOSE 44.0 42.0		05-683-364-006

02 3-270 ED				SIMILAR TO	
03 8-25-70 ED				GPH NO. 11-3-70	ISSUE 03
ORIG. BY	APPR'D.	RGH. WT.	FIN. WT.	CAT. NO.	PARENT ASSEMBLY NAME HI PRES OIL LIFT SYS
					SHEET NUMBER 3-
					PARENT ASM. PART NO. 05-682-996-804

ASSEMBLY RELEASE

PARENT ASM. PART NO.
05-682-996-804

QTY./ASM.	U/M	ITEM NO	COMPONENT PART NAME	CAT. NO.	COMPONENT PART NO.
2.0	EA	56	FLEXIBLE HOSE 40.0		05-683-364-008
2.0	EA	57	FLEXIBLE HOSE 38.5		05-683-364-007
2.0	EA	58	FLEXIBLE HOSE 52.0		05-683-005-005
2.0	EA	59	FLEXIBLE HOSE 48.0		05-683-005-003
2.5	FT	60	WIRE #2 #6		00-557-021-430 00-553-169-363 00-851-285-164 00-851-078-096
4.0	EA	61	TERMINAL		
1.0	EA	62	MOTOR GRD INST PL		05-683-031-001
2.0	EA	63	DRIVE SCR 6X.5		00-615-615-119
1.0	EA	65	"Y" STRAINER SEDIMENT SEPER 1.5		00-793-582- 012 ¹¹²
1.0	EA	66	COUPLING RED .5X25		00-711-055-018
1.0	EA	67	STR PIPE T O E .75 X SCH 40X8.0		50-422-050-080 00-573-731-209
1.0	EA	68	MOTOR -SEE NOTE 1 BELOW		05-682-346- 003 ⁰⁰⁷
6.0	EA	69	PIPE .375X SCH 40X .5		60-057-170-005 00-573-731-205
3.0	EA	70	TEE FLODAR BAX 3070-4-4-4 .25 TUBE X.25 TUBE X.25 NPTFE		00-717-695-904
2.0	EA	71	AIR BLEED VALVE		00-771-519- 004 ²⁰⁴
1.0	EA	73	ELBOW .5X90 DEG		00-711-315-004
1.0	EA	74	STR PIPE T O E .5X SCH 40X6.0		50-422-040-060 00-573-731-207

IT# 68 WAS 05-682-346-003 EFF 2-0509-38822 2-0509-38823		2-0509-38824 2-0509-38825 02 3-2-70 RD 04 3-2-70 MAP	IT# 71 WAS MK.004 ENG'D PER PUGH. DEPT REG. - MM. 004 PIS. CONTINUED 6-18-70 IAT	IT# 60 WAS 00-553-169-363 IT# 61 WAS 00-851-285-164 EFF. 2-0512-38822 38823 38824 38825 03 B-25-70 RD	SIMILAR TO GPH NO. 11-3-70 ISSUE 03		
ORIG. BY	APPR'D.	EGH. WI.	FIN. WT.	CAT. NO.	PARENT ASSEMBLY NAME	SHEET NUMBER	PARENT ASM. PART NO.
					HI PRESS OIL LIFT SYS	4	05-682-996-804