

VERMONT YANKEE PRESENTATION
POINTS TO CONSIDER BEFORE MAKING A
DECISION ON INERTING

REAL LIFE

OPERATOR RISKS ARE REAL
MAINTENANCE BENEFITS ARE REAL

HYPOTHETICAL SITUATION

RISK REDUCTION IS NOT PROVEN

FUTURE ACTIONS

RULEMAKING ON DEGRADED CORE ACCIDENTS
FAULT TREE ANALYSIS QUANTIFYING RISK/BENEFITS

SUPPORTING

IMPLEMENTATION OF "LESSONS LEARNED"
NUREG-0626, B&O TASK FORCE REPORT

LEGAL

ASLAB RULING: "DO NOT INERT"

VERMONT YANKEE OPPOSES CONTAINMENT INERTING

- PROVEN DANGEROUS TO OPERATING PERSONNEL
- WILL DEGRADE INSPECTION CAPABILITIES
- HYDROGEN RISK NOT DEMONSTRATED

- INERTING IS NOT IN THE BEST INTEREST OF SAFETY

ADVANTAGES OF A NON-INERTED CONTAINMENT

INCREASED ABILITY TO LOCATE, EVALUATE, AND
ISOLATE SYSTEM LEAKAGE

INCREASED INCENTIVE TO CORRECT MINOR
EQUIPMENT MALFUNCTIONS

MINIMIZE UNNECESSARY THERMAL CYCLES

ERASE THE "WAIT AND SEE" ATTITUDE

DRYWELL ENTRIES AT POWER*

<u>Total No. of Entries</u>	<u>Entries for Leakage Inspection</u>	<u>Entries Resulting In Plant Shutdown</u>	<u>Entries Resulting In Successful Leak Isolation</u>	<u>Entries Resulting In Successful Equipment Repair</u>	<u>Remarks</u>
3/8/75 (2) 62%	X		X		
3/17/75 SCRAM	Routine Precaution				No Leaking Found
3/23/75 (2)	X	X			RV-45 bonnet leak
4/9/76 56%	X				Leak repaired during a subsequent, unrelated shutdown.
5/11/76 (2) 55%	X		X		
2/5/77 (2) 54%	X		X		
5/6/77 (2) 55%	X		X		
12/25/77 (2) 75%	X		X		
2/3/78 Scram	Routine Precaution				No Leakage Found
3/22/78 (3) 60%		X			B Recirc Pump Oil Cooler Leak
11/5/78 50%				X	
11/7/78 98.9%	X		X		
6/2/79 35%				X	
6/26/79 65%	X		X		
7/21/79 70%	X				No Leakage Found
8/1/79 48%	X				No Leakage Found
8/9/79 94.3%	X	X			Bonnet on RV-53A
8/15/79 37%				X	
8/28/79 80%	X		X		
12/15/79 43%				X	
1/5/80 80%	X	X			Packing Leak on RHR61B
<u>Total</u>	<u>21</u>	<u>4</u>	<u>8</u>	<u>4</u>	

DRYWELL EQUIPMENT DRAIN SUMP (BLACK)

DRYWELL FLOOR DRAIN SUMP (RED)

46 2250

1 MONTH BY DAYS X 110 DIVISIONS
HEFFEL & ESSEN CO. MADE IN U.S.A.

G.P.M.

10

9

8

7

6

5

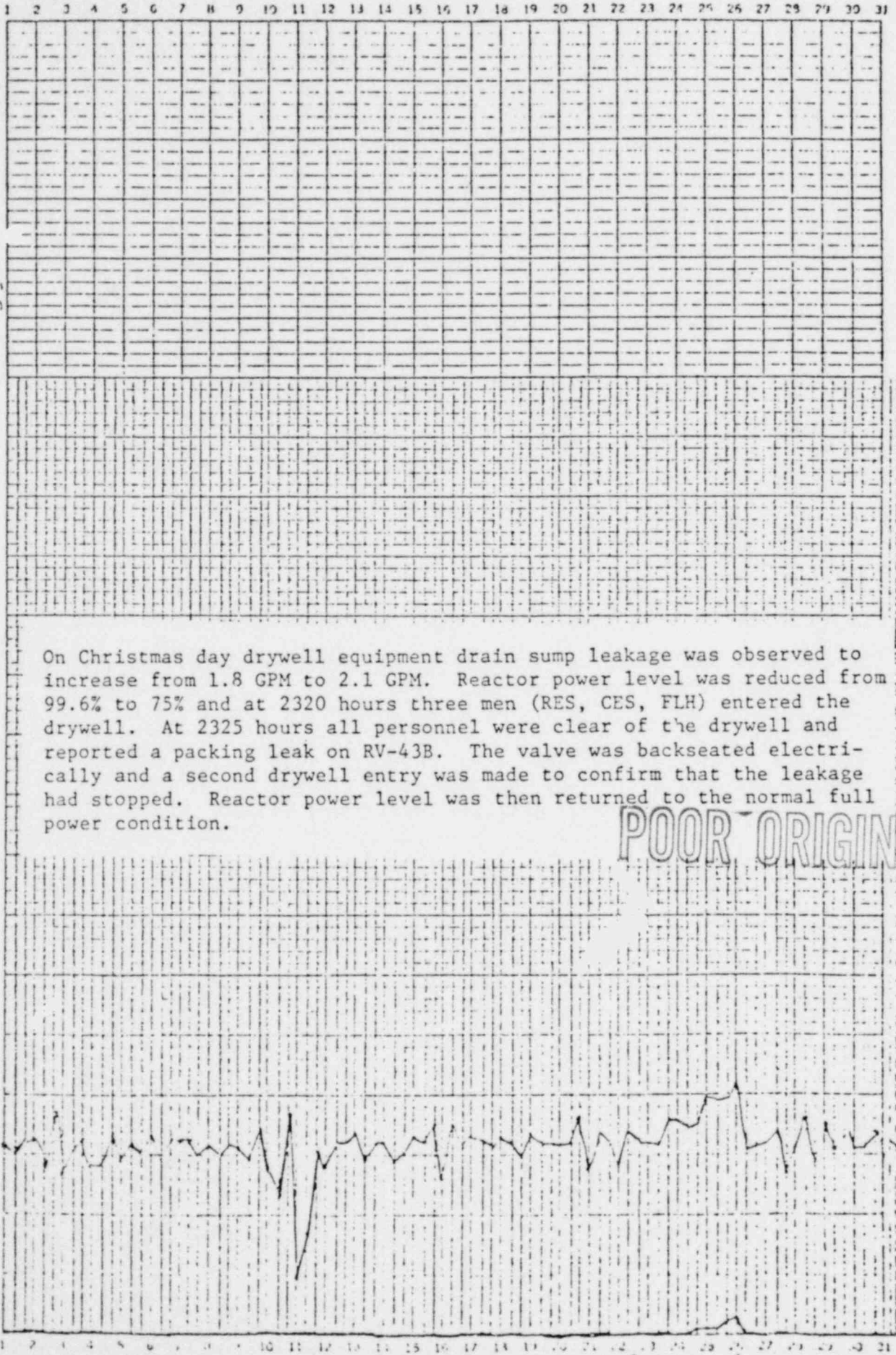
4

3

2

1

0



POOR ORIGINAL

NOTE 1 LINE 2

4152.03

Month December 1977

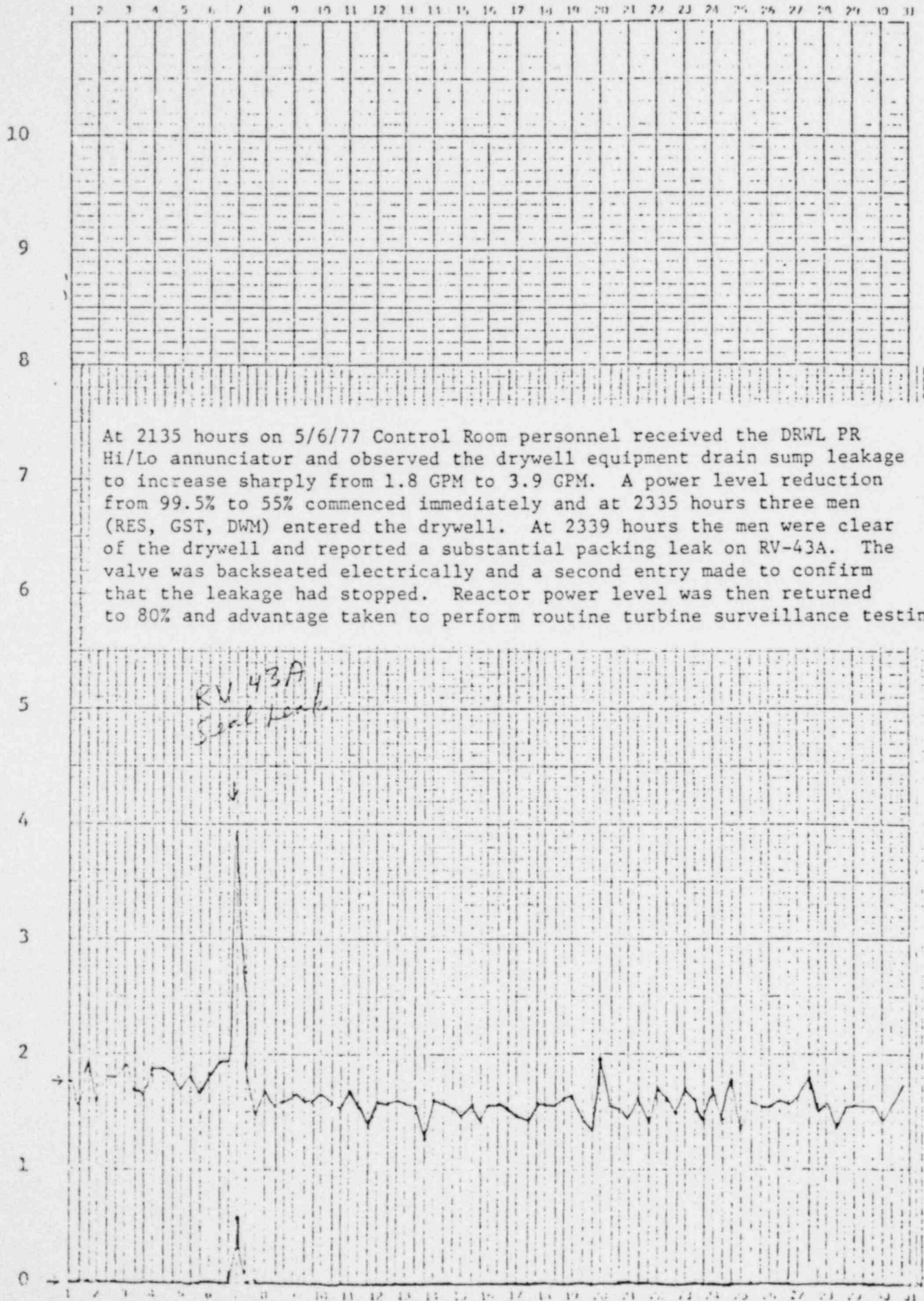
DRYWELL EQUIPMENT DRAIN SUMP (BLACK)

DRYWELL FLOOR DRAIN SUMP (RED)

46 2290

RECORDED BY DAYS X 110 DIVISIONS
REU TEL A ESSER CO. MADE IN USA

G.P.M.



At 2135 hours on 5/6/77 Control Room personnel received the DRWL PR Hi/Lo annunciator and observed the drywell equipment drain sump leakage to increase sharply from 1.8 GPM to 3.9 GPM. A power level reduction from 99.5% to 55% commenced immediately and at 2335 hours three men (RES, GST, DWM) entered the drywell. At 2339 hours the men were clear of the drywell and reported a substantial packing leak on RV-43A. The valve was backseated electrically and a second entry made to confirm that the leakage had stopped. Reactor power level was then returned to 80% and advantage taken to perform routine turbine surveillance testing.

7

1230

1/5/80

0800-1

0800-0800

- 0100 Drywell pressure, temperature, and particulates show an increase indicating a small leak has developed. Started REF-2A, reduced air to D.W.
- 0120 Reducing power, for turbine testing
- 0200 Drywell sump pumpout was increased to 26 PM. notified RES & J.P.P.
- 0250 Completed turbine testing.
- 0335 COMPLETED ROO EXERCISE SURVEILLANCE
- 0430 Drywell entry made to locate leak.
- 0445 Leak identified as stem packing on RHR 81B.
- 0543 Starting plant shutdown - REMUEC notified.
- 0700 A, B & C Cond Demins off line.
- 0715 Issued dump permits 80-9 & 80-10
- 0720 ^{W/P} SECURED 'C' EX FEED PUMP & 'C' COND. PUMP

↓

pt

Late Entry

T. Houghton

1600-

0800-1600 Power reduction in progress. Going to Cold S.D. because of Packing leak on RHR 81B.

- 0840 Removed "D" Cond Demin from service
- 0900 Transferred home loads to S.V. xformer. - Removed C C.W. pumps from service
- 0910 Removed "B" FR. valve from service
- 0920 Chemistry reports samples on Both RHR loops Sat.
- 0922 Removed generator from line
- 0940 Secured "B" Condensate Pump
- 0950 Secured Gen case monitor valve, shifted Gen H₂ monitor to SD opened S.V. vents on heaters, placed 150 shw heater in service

W/P

POOR ORIGINAL