

RANCHO SECO UNIT 1
TECHNICAL SPECIFICATIONS

Surveillance Standards

4. SURVEILLANCE STANDARDS

Applicability

Applies to items directly related to safety limits and limiting conditions for operation during power operation. During cold shutdown, only systems and components required to maintain safe shutdown will be tested.

67

Objective

To specify the minimum frequency and type of surveillance to be applied to unit equipment and conditions.

4.1 OPERATIONAL SAFETY REVIEW

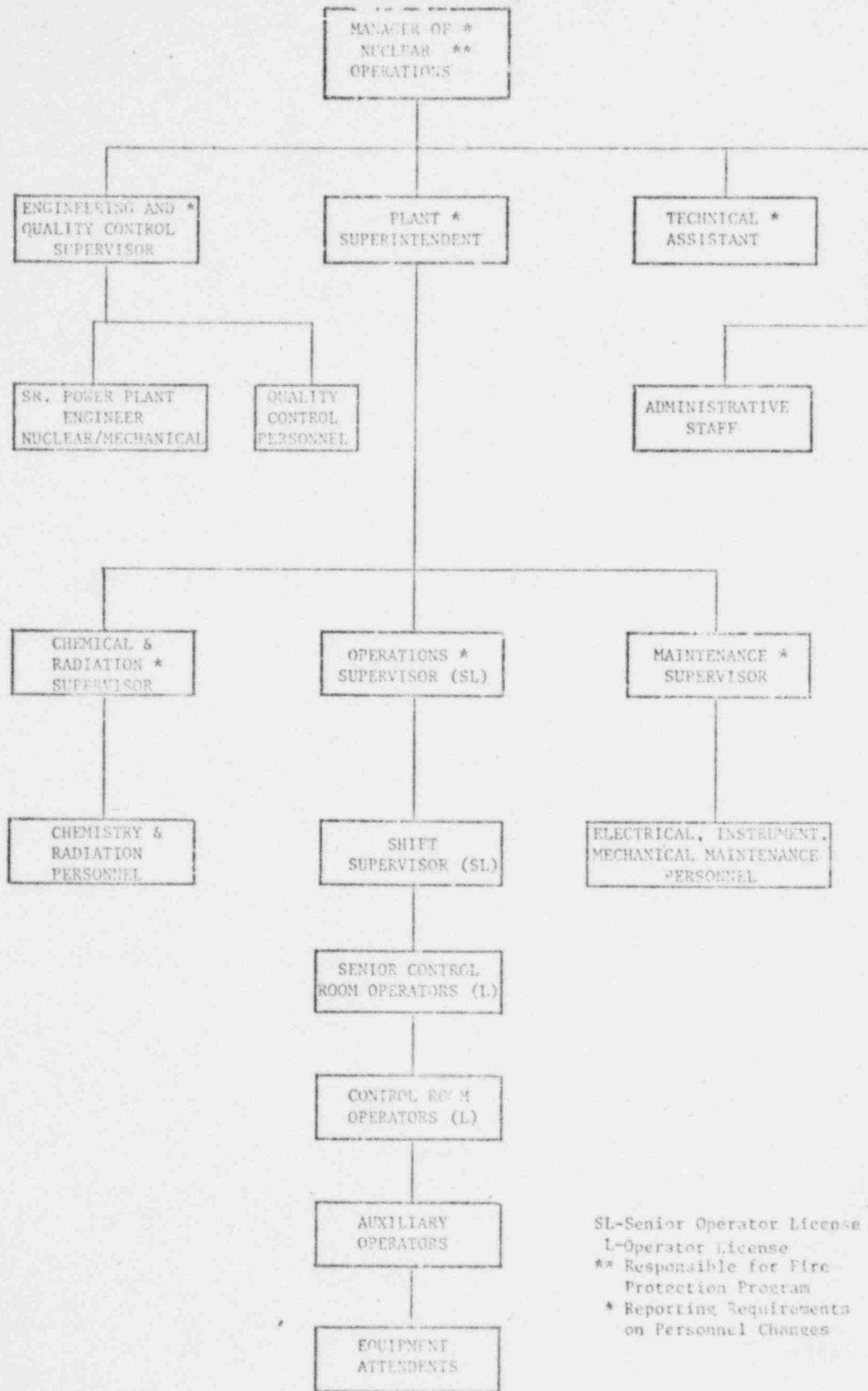
Specification

- 4.1.1 The minimum frequency and type of surveillance required for reactor protection system and safety feature protection system instrumentation when the reactor is critical shall be as stated in table 4.1-1.
- 4.1.2 Equipment and sampling test shall be performed as detailed in tables 4.1-2 and 4.1-3.
- 4.1.3 A power distribution map shall be made to verify the expected power distribution at periodic intervals on approximately every 10 effective full power days using the incore instrumentation detector system.

Bases

Check

Failures such as blown instrument fuses, defective indicators, faulted amplifiers which result in "upscale" or "downscale" indication can be easily recognized by simple observation of the functioning of an instrument or system. Furthermore, such failures are, in many cases, revealed by alarm or annunciator action. Comparison of output and/or state of independent channels measuring the same variable supplements this type of built-in surveillance. Based on experience in operation of both conventional and nuclear systems, when the unit is in operation, the minimum checking frequency stated is deemed adequate for reactor system instrumentation.



SL-Senior Operator License
 L-Operator License
 ** Responsible for Fire Protection Program
 * Reporting Requirements on Personnel Changes

Figure 6.6-2
 PLANT ORGANIZATION CHART
 Proposed Amendment 67