

AEC I TRIBUTION FOR PART 50 DOCKET M. SERIAL
(TEMPORARY FORM)

CONTROL NO: 2575

FILE 1111

FROM: Florida Power Corporation St. Petersburg, Florida 33733 J. T. Rodgers	DATE OF DOC: 4-13-73	DATE REC'D 4-18-73	LTR x	MEMO	RPT	OTHER
TO: DL	ORIG 1 signed	CC	OTHER	SENT AEC PDR X SENT LOCAL PDR X		
CLASS: <u>U</u> PROP INFO	INPUT	NO CYS REC'D 1	DOCKET NO: 50-302			

DESCRIPTION:
Ltr advising of their intention to commence excavation of the extensions of the present intake canal and discharge canal.....

ENCLOSURES:

PLANT NAMES: Crystal River Unit # 3

ACKNOWLEDGED DO NOT REMOVE

FOR ACTION/INFORMATION 4-19-73 fob

BUTLER(L) W/ Copies	← SCHWENCER(L) W/ 2 Copies	ZIEMANN(L) W/ Copies	YOUNGBLOOD(E) W/ Copies
CLARK(L) W/ Copies	STOLZ(L) W/ Copies	ROUSE(FM) W/ Copies	REGAN(E) W/ Copies
GOLLER(L) W/ Copies	VASSALLO(L) W/ Copies	DICKER(E) W/ Copies	W/ Copies
KNIEL(L) W/ Copies	SCHEMEL(L) W/ Copies	KNIGHTON(E) W/ Copies	W/ Copies

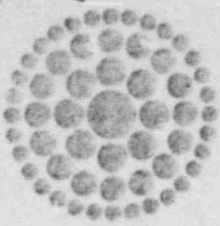
INTERNAL DISTRIBUTION

REG FILE	TECH REVIEW	DENTON	F & M	WADE	E
AEC PDR	HENDRIE	GRIMES	SMILEY	BROWN	E
OGC, ROOM P-506A	SCHROEDER	GAMMILL	NUSSBAUMER	G. WILLIAMS	E
MUNTZING/STAFF	MACCARY	KASTNER		SHEPPARD	E
CASE	KNIGHT	BALLARD	LIC ASST.		
GIAMBUSSO	PAWLICKI	SPANGLER	SERVICE	L	A/T IND
BOYD	SHAO		WILSON	L	BRAITMAN
V. MOORE-I(BWR)	STELIO	ENVIRO	GOULBOURNE	L	SALTZMAN
DEYOUNG-L(PWR)	HOUSTON	MULLER	SMITH	L	
SKOVHOLT-L	NOVAK	DICKER	GEARIN	L	PLANS
P. COLLINS	ROSS	KNIGHTON	DIGGS	L	MCDONALD
REG OPR	IPPOLITO	YOUNGBLOOD	TEETS	L	DUBE
FILE & REGION(2)	TEDESCO	REGAN	LEE	L	
MORRIS	LONG	PROJ LEADER	MAIGRET	L	INFO
STEELE	LAINAS	<u>SELLS</u>	SHAFFER	F & M	C. MILES
	BENAROYA	HARLESS			
	VOLLMER				

8003 200 793 ^A

EXTERNAL DISTRIBUTION

✓ 1-LOCAL PDR Crystal River, Fla.	(1)(2)(9)-NATIONAL LAB'S	1-PDR-SAN/LA/NY
1-DTIE(ABERNATHY)	1-R. CARROLL- C, GT-B227	1- GERALD LELLOUCHE
1-NSIC(BUCHANAN)	1- R. CATLIN, E-256-GT	BROOKHAVEN NAT. LAB
1-ASLB-YORE/SAYRE	1- CONSULTANT'S	1-AGMED(WALTER KOESTER,
WOODWARD/H ST.	NEWMARK/BLUME/AGABIAN	RM C-427, GT)
16-CYS ACFS HOLDING	1- GERLAD ULRIKSON....ORNL	1- RD...MULLER...F-309GT



Florida Power
CORPORATION

April 13, 1973

The Director
Directorate of Licensing
United States Atomic Energy Commission
Washington, DC 20545

Dear Sir:

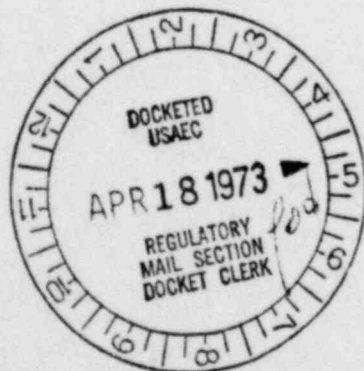
In accordance with the provisions of Dr. Peter A. Morris' letter of November 23, 1971, Florida Power Corporation is notifying you of our intention to commence excavation of the extensions of the present intake canal and discharge canal. In its filing pursuant to Section E to Appendix D of Part 50, Title 10 of the Code of Federal Regulations, Florida Power Corporation had voluntarily postponed this excavation work until October, 1972.

In the absence of any public or governmental opposition to the present design and in order to preserve an orderly construction schedule through commercial operation, Florida Power Corporation is commencing on or about May 1 excavation of the upland portions of these canal extensions. We are fully cognizant that the approvals of the State of Florida Board of Trustees of the Internal Improvement Trust Fund and the U.S. Army Corps of Engineers are required prior to removal of the earthen plug separating the upland excavation from the navigable waters and that approval of the Environmental Protection Agency is required prior to any discharge into these canals.

Very truly yours,

J. T. Rodgers
Assistant Vice President

JTR/ns



CEREN-DE

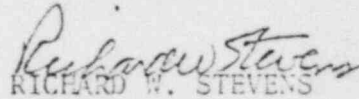
Mr. Harold R. Denton

20 DEC 1973

It is further pointed out that those structures exposed to direct wave attack are subject to dynamic forces. The dynamic forces can greatly exceed those static forces determined by assuming a static water level associated with the flood protection level.

If I can be of assistance in the safety evaluation of this plant please let me know.

Sincerely yours,



RICHARD W. STEVENS
Lieutenant Colonel, Corps of Engineers
Acting Commander and Director

CF: Mr. L. G. Hulman/AEC