

AEC DISTRIBUTION FOR PART 50 DOCKET MATERIAL
(TEMPORARY FORM)

CONTROL NO: 1386

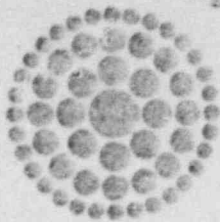
FROM: Florida Power Corporation St. Petersburg, Fla. 33733 J. T. Rodgers		DATE OF DOC: 2-22-73	DATE REC'D 2-27-73	FILE				
TO: Mr. Giambusso		ORIG 1	CC	OTHER	LTR X	MEMO	RPT	OTHER
CLASS: U PROP INFO		INPUT	NO CYS REC'D 1		SENT AEC PDR X SENT LOCAL PDR X			
DESCRIPTION: Ltr furnishing info re Florida Power Corporation's current position on the re-evaluation of the probable maximum hurricane (PMH) surge height at the Crystal River Unit 3.....		ENCLOSURES:		DOCKET NO: 50-302				
DIST PER F. LOGAN								
PLANT NAMES: Crystal River Unit 3								

FOR ACTION/INFORMATION				3-1-73	AB
BUTLER(L) W/ Copies	✓ SCHWENCER(L) W/ 4 Copies	SCHEMEL(L) W/ Copies	KNIGHTON(E) W/ Copies		
CLARK(L) W/ Copies	STOLZ(L) W/ Copies	ZIEMANN(L) W/ Copies	YOUNGBLOOD(E) W/ Copies		
GOLLER(L) W/ Copies	VASSALLO(L) W/ Copies	CHITWOOD(FM) W/ Copies	REGAN(E) W/ Copies		
KNIEL(L) W/ Copies	H. DENTON W/ Copies	DICKER(E) W/ Copies			

REG FILE	INTERNAL DISTRIBUTION			
- AEC PDR	TECH REVIEW	VOLLMER	HARLESS	WADE E
OGC, ROOM P-506A	HENDRIE	✓ DENTON		SHAFFER F & M
MUNTZING/STAFF	SCHROEDER	✓ GRIMES	F & M	BROWN E
CASE	MACCARY	GAMMILL	SMILEY	G. WILLIAMS E
GIAMBUSSO	KNIGHT(2)	KASTNER	NUSSBAUMER	E. GOULBOURNE L
BOYD-L(BWR)	PAWLICKI	BALLARD		A/T IND
DEYOUNG-L(PWR)	SHAO	SPANGLER	LIC ASST.	BRATTMAN
SKOVHOLT-L	KNUTH		SERVICE L	SALTZMAN
P. COLLINS	STELLO	ENVIRO	MASON L	
REG OPR	MOORE	MULLER	WILSON L	PLANS
FILE & REGION (2)	HOUSTON	DICKER	MAIGRET L	MCDONALD
MORRIS	TEDESCO	KNIGHTON	SMITH L	DUBE
WEELE	LONG	YOUNGBLOOD	GEARIN L	
	LAINAS	PROJ LEADER	DIGGS L	INFO
	BENAROYA		TEETS L	C. MILES
		REGAN	LEE L	

EXTERNAL DISTRIBUTION		
- LOCAL PDR Crystal River, Fla.	(1)(2)(9)-NATIONAL LAB'S	1-GERALD ULRIKSON...ORNL
- DTIE (ABERNATHY)	1-R. CARROLL-OC, GT-B227	1-PDR-SAN/LA/NY
- NSIC (BUCHANAN)	1-R. CATLIN, E-256-GT	1-GERALD LELLOUCHE
ASLB-YORE/SAYRE	1-CONSULANT'S	BROOKHAVEN NAT. LAB
ODWARD/H. ST.	NEWMARK/BLUME/AGABIAN	1-AGMED (WALTER KOESTER, b
CYS ACRS HOLDING		Rm C-427, GT)
		1-RD...MULLER...F-309GT

8003200761



**Florida
Power**
CORPORATION

February 22, 1973

Mr. A. Giambusso
Deputy Director for
Reactor Projects
Directorate of Licensing
U.S. Atomic Energy Commission
Washington, D.C. 20545

Subject: Crystal River Unit #3
Nuclear Generating Plant
Docket No. 50-302

Dear Mr. Giambusso:

This is to inform you of Florida Power Corporation's current position on the re-evaluation of the probable maximum hurricane (PMH) surge height at the Crystal River Unit 3 Nuclear Plant. Meetings were held in Washington on February 2 and 15, 1973, with members of your staff and consultants from the U.S. Army Corps of Engineers - Coastal Engineering Research Center. At the February 15 meeting, our consultants, Dames and Moore, presented new information regarding their analysis and also submitted their (heretofore proprietary) computer program for AEC/CERC verification and results of actual program runs to the AEC.

At meeting's end on February 15, we were advised by the AEC representative that four (alternative) courses of action were possible for resolution of the differences in predicted PMH surge height between the AEC and Florida Power Corporation:

1. Florida Power Corporation accept the AEC position of 33.4 feet.
2. AEC accept the Florida Power Corporation position of 29.6 feet.
3. Based on the February 15 meeting input by Dames and Moore, Florida Power docket a position of 32.1 feet with proposed AEC acceptance.
4. Delay the decision on surge height for six (6) months before AEC-CERC can complete review and assessment of Dames and Moore work - with no indication to what the final design surge height would reach.

1386

Mr. A. Giambusso

- 2 -

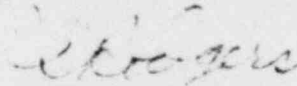
February 22, 1973

We wish to inform you of our decision to remain with 29.6 feet (original design height was 24.5 feet) as a conservative PMH surge height and feel that such a position is justifiably conservative based on the Dames and Moore work. We accept the alternative to have AEC-CERC evaluate the Dames and Moore efforts, but feel strongly that your six (6) month review schedule is inconsistent with the overall licensing schedule, possible backfitting of design and construction, and the high priority of AEC concern to resolve such issues.

Our consultants, Dames and Moore, advise us that they can, in approximately sixty (60) days, both confirm computer program differences relating to surge height prediction as compared to the AEC-CERC program and calibrate their analysis based on actual hurricane data. We feel that resolution of the surge problem based on these facts can certainly be resolved within sixty (60) to ninety (90) days. We would request that AEC-CERC agree to this same schedule.

We are most anxious to resolve this matter at the earliest possible date so that risk to the licensing and overall project schedule for Crystal River Unit 3 is minimized. We trust that the appropriate action and schedule can and will be imposed by all for final resolution of this matter in sixty (60) to ninety (90) days.

Very truly yours,



J. T. Rodgers
Asst. Vice President

JTR/iw