

FILE: _____

FROM: Florida Power Corporation St. Petersburg, Florida 33733 W. A. Szelistowske		DATE OF DOC 6-20-73	DATE REC'D 6-29-73	LTR x	MEMO	RPT	OTHER
TO: DL		ORIG 3 signed	CC 100	OTHER	SENT AEC PDR X SENT LOCAL PDR X		
CLASS	UNCLASS XXX	PROP INFO	INPUT	NO CYS REC'D 103	DOCKET NO: 50-302		

DESCRIPTION:
Ltr trans the following:

ENCLOSURES:
AMDT # 27 notarized 6-20-73 consisting of....
(1) Rev & addl pages & figs to FSAR
(2) Rev to Ans to Questions 4.20 & 4.21 re our 4-3-73 ltr.
(3) Ans to Questions re our 4-27-73 ltr.

PLANT NAME: Crystal River Unit # 3

ACKNOWLEDGED DO NOT REMOVE
(103 cys rec'd)

FOR ACTION/INFORMATION 7-2-73 fod

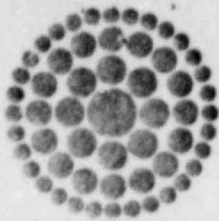
- | | | | |
|------------------------|-----------------------------|----------------------------|-----------------------|
| BUTLER(L)
W/ Copies | ✓SCHWENCER(L)
W/2 Copies | ZIEMANN(L)
W/ Copies | REGAN(E)
W/ Copies |
| CLARK(L)
W/ Copies | STOLZ(L)
W/ Copies | DICKER(E)
W/ Copies | W/ Copies |
| GOLLER(L)
W/ Copies | VASSALLO(L)
W/ Copies | KNIGHTON(E)
W/ Copies | W/ Copies |
| KNIEL(L)
W/ Copies | SCHEMEL(L)
W/ Copies | YOUNGBLOOD(E)
W/ Copies | W/ Copies |

INTERNAL DISTRIBUTION

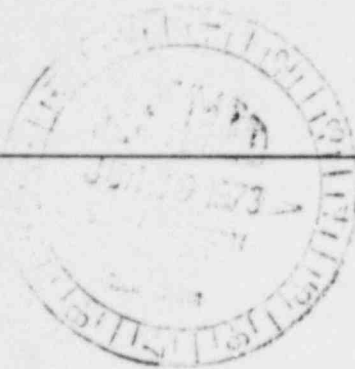
- | | | | | |
|-----------------------|---------------|--------------|-----------------|----------------|
| ✓REG FILE | TECH REVIEW | ✓DENTON(LTR) | LIC ASST | A/T IND |
| ✓AEC PDR | HENDRIE | GRIMES | BROWN (E) | BRAITMAN |
| ✓OGC, ROOM P-506A | SCHROEDER | GAMMILL | DIGGS (L) | SALTZMAN |
| MUNTZING/STAFF | ✓MACCARY(LTR) | KASTNER | GEARIN (L) | |
| ✓CASE (LTR) | KNIGHT | BALLARD | ✓GOULBOURNE (L) | PLANS |
| ✓GIAMBUSSO(LTR) | PAWLICKI | SPANGLER | LEE (L) | ✓MCDONALD(LTR) |
| BOYD | SHAO | | MAIGRET (L) | DUBE |
| MOORE (L)(BWR) | ✓STELLO(LTR) | ENVIRO | SERVICE (L) | |
| ✓DEYOUNG(L)(PWR)(LTR) | HOUSTON | MULLER | SHEPPARD (E) | INFO |
| SKOVHOLT (L) | NOVAK | DICKER | SMITH (L) | C. MILES |
| ✓P. COLLINS | ROSS | KNIGHTON | TEETS (L) | |
| | IPPOLITO | YOUNGBLOOD | WADE (E) | |
| REG OPR | ✓TEDESCO(LTR) | ✓REGAN(LTR) | WILLIAMS (E) | |
| ✓FILE & REGION(3) | LONG | PROJECT LDR | WILSON (L) | |
| MORRIS | ✓LAINAS | SELLS | | |
| STEELE | ✓BENAROYA | HARLESS | | |
| | ✓VOLLMER | | | |

EXTERNAL DISTRIBUTION

- | | | |
|---|----------------------------------|------------------------|
| ✓1 - LOCAL PDR Crystal River, Fla. | ✓(X)(2)(X) - NATIONAL LAB'S PNWL | 1-PDR-SAN/LA/NY |
| ✓1 - DTJE(ABERNATHY) | 1-R. CARROLI.-OC,GT-B227 | ✓1-GERALD LELLOUCHE |
| ✓1 - NSIC(BUCHANAN) | 1-R. CATLIN, E-256-GT | BROOKHAVEN NAT. LAB |
| ✓1 - ASLB(YORE/XXXXX/
XXXXXX/"H" ST. | ✓1-CONSULTANT'S | 1-AGMED(WALTER KOESTER |
| ✓16 - CYS ACRS HOLDING | XXXXXX/BLUME/XXXXXX | RM-C-427-GT |
| | 1-GERALD ULRIKSON...ORNL | 1-RD..MULLER..F-309 GI |



**Florida
Power**
CORPORATION



June 20, 1973

Regulatory

File Cy.

The Director
Directorate of Licensing
United States Atomic Energy Commission
Washington, D. C. 20545

Dear Sir:

In Re: Florida Power Corporation
Crystal River Nuclear Generating Plant
Docket No. 50-302

Enclosed are three (3) executed originals and nineteen (19) conformed copies of Amendment No. 27 to the Application for Licenses for Crystal River Unit 3 Nuclear Generating Plant. Also enclosed are an additional eighty-one (81) copies for a total of 103 copies as previously furnished for your distribution.

Amendment No. 27 consists of revised pages to the Final Safety Analysis Report and Supplement No. 1 contained therein. Specifically, these revisions contain responses to questions 4.20 and 4.21, of the Request for Additional Information made in Mr. A. Schwencer's letter of April 3, 1973 and responses to all questions in the Request for Additional Information made in Mr. A. Schwencer's letter of April 27, 1973, except 6.12 and 6.13. In order to provide an adequate response to these two questions, additional time is required. Responses will be made to these requests as soon as possible prior to July 31, 1973.

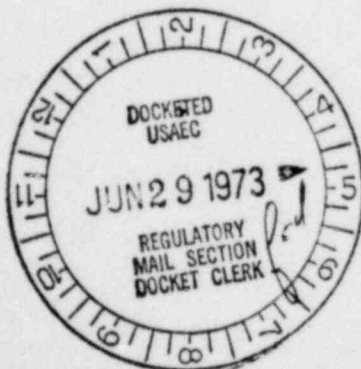
Please contact us if you require any discussion or clarification of the above information.

Very truly yours,

W. A. Szelistowski

W. A. Szelistowski
Director-Generation Engineering

WAS/mcf



5129