

012 REACTOR SYSTEM  
 0120001 REACTOR ASSEMBLY  
 0120002 REACTOR VESSEL & INTERNALS ASSEMBLY  
 0120003 SHIELD HEAD AND SEPARATOR  
 0120004 STEAM MIXER  
 0120005 REACTOR HEAD INSULATION & SUPPORT  
 0120006 SWP INSULATION  
 0120007 SWP INSULATION  
 0120008 SWP INSULATION

021 NUCLEAR BOILER SYSTEM  
 0210001 FEEDWATER CONDENSATION PRODUCT MONITOR

033 REACTOR RECIRCULATION SYSTEM  
 0330001 REACTOR RECIRCULATION PUMP  
 0330002 REACTOR RECIRCULATION PUMP  
 0330003 HYDRAULIC POWER UNIT  
 0330004 HYDRAULIC POWER UNIT  
 0330005 REACTOR RECIRCULATION PUMP LOW FREQUENCY NO SET  
 0330006 REACTOR RECIRCULATION PUMP LOW FREQUENCY NO SET  
 0330007 REACTOR RECIRCULATION PUMP LOW FREQUENCY NO SET  
 0330008 REACTOR RECIRCULATION PUMP LOW FREQUENCY NO SET

041 STAND BY LIQUID CONTROL SYSTEM  
 0410001 STORAGE TANK  
 0410002 TEST TANK  
 0410003 BLEND MIXING TANK  
 0410004 PUMP  
 0410005 SLDS TRANSFER PUMP

051 NEUTRON MONITORING SYSTEM  
 0510001 DISPOSAL CASE  
 0510002 DISPOSAL EQUIPMENT  
 0510003 DRIVE MECHANISM  
 0510004 DRIVE MECHANISM  
 0510005 DRIVE MECHANISM  
 0510006 DRIVE MECHANISM  
 0510007 DRIVE MECHANISM  
 0510008 DRIVE MECHANISM  
 0510009 DRIVE MECHANISM  
 0510010 DRIVE MECHANISM  
 0510011 DRIVE MECHANISM  
 0510012 DRIVE MECHANISM  
 0510013 DRIVE MECHANISM  
 0510014 DRIVE MECHANISM  
 0510015 DRIVE MECHANISM  
 0510016 DRIVE MECHANISM  
 0510017 DRIVE MECHANISM  
 0510018 DRIVE MECHANISM  
 0510019 DRIVE MECHANISM  
 0510020 DRIVE MECHANISM  
 0510021 DRIVE MECHANISM  
 0510022 DRIVE MECHANISM  
 0510023 DRIVE MECHANISM  
 0510024 DRIVE MECHANISM  
 0510025 DRIVE MECHANISM  
 0510026 DRIVE MECHANISM  
 0510027 DRIVE MECHANISM  
 0510028 DRIVE MECHANISM  
 0510029 DRIVE MECHANISM  
 0510030 DRIVE MECHANISM  
 0510031 DRIVE MECHANISM  
 0510032 DRIVE MECHANISM  
 0510033 DRIVE MECHANISM  
 0510034 DRIVE MECHANISM  
 0510035 DRIVE MECHANISM  
 0510036 DRIVE MECHANISM  
 0510037 DRIVE MECHANISM  
 0510038 DRIVE MECHANISM  
 0510039 DRIVE MECHANISM  
 0510040 DRIVE MECHANISM

051 REMOTE SHUTDOWN SYSTEM  
 0510001 REMOTE SHUTDOWN PANEL  
 0510002 REDUNDANT REMOTE SHUTDOWN PANEL

051 STEAM BYPASS & PRESSURE REGULATING SYSTEM  
 0510001 HYDRAULIC POWER UNIT  
 0510002 STEAM BYPASS VALVE  
 0510003 STEAM BYPASS VALVE  
 0510004 PRESSURE REGULATOR CABINET

051 PROCESS COMPUTER SYSTEM  
 0510001 CPU PROCESOR  
 0510002 CPU MEMORY CABINET  
 0510003 CPU MEMORY CABINET  
 0510004 CPU MEMORY CABINET  
 0510005 CPU MEMORY CABINET  
 0510006 CPU MEMORY CABINET  
 0510007 CPU MEMORY CABINET  
 0510008 CPU MEMORY CABINET  
 0510009 CPU MEMORY CABINET  
 0510010 CPU MEMORY CABINET  
 0510011 CPU MEMORY CABINET  
 0510012 CPU MEMORY CABINET  
 0510013 CPU MEMORY CABINET  
 0510014 CPU MEMORY CABINET  
 0510015 CPU MEMORY CABINET  
 0510016 CPU MEMORY CABINET  
 0510017 CPU MEMORY CABINET  
 0510018 CPU MEMORY CABINET  
 0510019 CPU MEMORY CABINET  
 0510020 CPU MEMORY CABINET  
 0510021 CPU MEMORY CABINET  
 0510022 CPU MEMORY CABINET  
 0510023 CPU MEMORY CABINET  
 0510024 CPU MEMORY CABINET  
 0510025 CPU MEMORY CABINET  
 0510026 CPU MEMORY CABINET  
 0510027 CPU MEMORY CABINET  
 0510028 CPU MEMORY CABINET  
 0510029 CPU MEMORY CABINET  
 0510030 CPU MEMORY CABINET  
 0510031 CPU MEMORY CABINET  
 0510032 CPU MEMORY CABINET  
 0510033 CPU MEMORY CABINET  
 0510034 CPU MEMORY CABINET  
 0510035 CPU MEMORY CABINET  
 0510036 CPU MEMORY CABINET  
 0510037 CPU MEMORY CABINET  
 0510038 CPU MEMORY CABINET  
 0510039 CPU MEMORY CABINET  
 0510040 CPU MEMORY CABINET

017 PLANT RADIATION MONITORING SYSTEM  
 0170001 EMERGENCY SERVICE WATER LOOP 'A' RADIATION MONITOR  
 0170002 EMERGENCY SERVICE WATER LOOP 'B' RADIATION MONITOR  
 0170003 RADIASTE EFFLUENT TO EMERGENCY SWGE VTR RADIATION MONITOR RACK  
 0170004 NUCLEAR CLOSER COOLING SYSTEM RADIATION MONITOR RACK  
 0170005 ADR-HX SERVICE VTR RADIATION MONITOR RACK  
 0170006 OFF-GAS POST-TREATMENT SAMPLE PANEL  
 0170007 OFF-GAS POST-TREATMENT VIAL SAMPLER  
 0170008 OFF-GAS PRE-TREATMENT SAMPLE PANEL  
 0170009 OFF-GAS POST-TREATMENT RADIATION MONITOR (017J013)  
 0170010 OFF-GAS POST-TREATMENT RADIATION MONITOR (017J014)

017 PLANT RADIATION MONITORING SYSTEM (CONT.)  
 0170001 EMERGENCY SERVICE WATER LOOP 'A' RADIATION MONITOR (017J008)  
 0170002 EMERGENCY SERVICE WATER LOOP 'B' RADIATION MONITOR (017J008)  
 0170003 RADIASTE DISCHARGE RADIATION MONITOR - ENV DISCHARGE (017J007)  
 0170004 NUCLEAR CLOSER COOLING RADIATION MONITOR (017J009)  
 0170005 ADR-HX SERVICE VTR RADIATION MONITOR RACK (00M004)  
 0170006 CONTAINMENT VENTILATION EXHAUST RADIATION MONITOR  
 0170007 CONTAINMENT VENTILATION EXHAUST RADIATION MONITOR  
 0170008 CONTAINMENT VENTILATION EXHAUST RADIATION MONITOR  
 0170009 CONTAINMENT VENTILATION EXHAUST RADIATION MONITOR  
 0170010 MAIN STEAM LINE RADIATION MONITOR  
 0170011 MAIN STEAM LINE RADIATION MONITOR  
 0170012 MAIN STEAM LINE RADIATION MONITOR  
 0170013 MAIN STEAM LINE RADIATION MONITOR  
 0170014 CARBON BED VAULT RADIATION MONITOR  
 0170015 CARBON BED VAULT RADIATION MONITOR  
 0170016 OFF-GAS PRE-TREATMENT RADIATION MONITOR (017J004)

017 CONTAINMENT VESSEL AND DRYWELL PURGE EXHAUST RADIATION MONITOR (081P078)  
 0170001 DRYWELL ATMO/SPHERE RADIATION MONITOR (081P071)  
 0170002 CONTAINMENT ATMOSPHERE RADIATION MONITOR (081P072)  
 0170003 AMMULUS EXHAUST - TRAIN 'A' - RADIATION MONITOR (081P073)  
 0170004 AMMULUS EXHAUST - TRAIN 'B' - RADIATION MONITOR (081P074)  
 0170005 AUXILIARY BUILDING VENTILATION EXHAUST RADIATION MONITOR (081P075)  
 0170006 FUEL HANDLING VENTILATION EXHAUST RADIATION MONITOR (081P076)  
 0170007 RADIASTE BUILDING VENTILATION EXHAUST RADIATION MONITOR (081P077)  
 0170008 INTERMEDIATE BUILDING VENTILATION EXHAUST RADIATION MONITOR (081P078)  
 0170009 OFF-GAS BUILDING VENTILATION EXHAUST RADIATION MONITOR (081P079)  
 0170010 CONTROL ROOM AIRBORNE RADIATION MONITOR (081P080)  
 0170011 UNIT 1 VENT RADIATION MONITOR (081P081)

017 UNDERDRAIN SYSTEM RADIATION MONITOR  
 0170001 UNDERDRAIN SYSTEM RADIATION MONITOR  
 0170002 OFF-GAS VENT PIPE RADIATION MONITOR  
 0170003 STEAM PACKING EXHAUSTER EFFLUENT RADIATION MONITOR  
 0170004 TURBINE BUILDING AND HEATER BAY VENT RADIATION MONITOR (081P700)

018 PORT ACCIDENT RADIATION MONITORING SYSTEM  
 0180001 MAIN PLANT VENT GAS RADIATION MONITOR  
 0180002 OFF-GAS VENT GAS RADIATION MONITOR  
 0180003 TURBINE BUILDING/HEATER BAY VENT GAS RADIATION MONITOR

021 AREA RADIATION MONITORING SYSTEM (DETECTOR NUMBERS)  
 0210001 RADIATION MONITOR REACTOR BUILDING  
 0210002 RADIATION MONITOR REACTOR BUILDING  
 0210003 PERSONNEL AIR LOCK  
 0210004 DRG NEW WEST  
 0210005 NEW F/O RECEIVING TANK AREA  
 0210006 TIP DRIVE AREA  
 0210007 NEW F/O AREA  
 0210008 UPPER POOL AREA  
 0210009 AUXILIARY BUILDING EAST  
 0210010 AUXILIARY BUILDING WEST  
 0210011 TURBINE ROOM EAST  
 0210012 DRG NEW EAST  
 0210013 TURBINE ROOM WEST  
 0210014 TURBINE ROOM  
 0210015 TURBINE ROOM AREA  
 0210016 TURBINE BUILDING SWMP AREA  
 0210017 OFF-GAS BUILDING  
 0210018 CONDENSATE FILTER PUMP AREA  
 0210019 OFF-GAS AFTER FILTER AREA  
 0210020 H.P. FEEDWATER HEATER AREA  
 0210021 FEED PUMP AREA  
 0210022 RADIASTE BUILDING WEST  
 0210023 RADIASTE BUILDING EAST  
 0210024 PROCESS SAMPLE ROOM  
 0210025 RADIASTE EVAPORATOR AREA  
 0210026 FUEL POOL CLEANUP P/O AREA  
 0210027 FUEL PREPARATION P/O AREA  
 0210028 SPENT FUEL STORAGE POOL  
 0210029 DRYWELL  
 0210030 SOLID RADIASTE DRAINING AREA  
 0210031 WASTE COMPACTOR AREA  
 0210032 CONTROL ROOM  
 0210033 OFF-GAS HOLDUP AREA  
 0210034 FUEL POOL COOLING DROPLIN PUMP AREA

021 ENVIRONMENT MONITORING SYSTEM  
 0210001 CONTAINMENT FOUNDATION INSIDE AMMULUS Y2  
 0210002 CONTAINMENT FOUNDATION INSIDE AMMULUS Y2  
 0210003 ON CONTAINMENT INSIDE AMMULUS Y2  
 0210004 REACTOR EQUIPMENT INSIDE DRYWELL Y2  
 0210005 REACTOR CORE COOLING PIPING Y2  
 0210006 HPCS PUMP BASK MAT Y2  
 0210007 CONTAINMENT FOUNDATION INSIDE AMMULUS ON E/P LINE Y2  
 0210008 CONTAINMENT FOUNDATION INSIDE AMMULUS Y2  
 0210009 REACTOR EQUIPMENT INSIDE DRYWELL Y2  
 0210010 HPCS PUMP BASK MAT Y2  
 0210011 AUXILIARY BUILDING FOUNDATION MAT O' CENTER LINE Y2

012 RESIDUAL HEAT REMOVAL SYSTEM  
 0120001 HEAT EXCHANGER  
 0120002 HEAT EXCHANGER  
 0120003 HEAT EXCHANGER  
 0120004 HEAT EXCHANGER  
 0120005 HEAT EXCHANGER  
 0120006 PUMP  
 0120007 WATER LEG PUMP

021 LOW PRESSURE CORE SPRAY SYSTEM  
 0210001 PUMP  
 0210002 WATER LEG PUMP  
 0210003 HIGH PRESSURE CORE SPRAY SYSTEM  
 0210004 PUMP  
 0210005 WATER LEG PUMP  
 0210006 DIESEL DRIVEN STARTING AIR COMPRESSOR  
 0210007 DIESEL DRIVEN STARTING AIR COMPRESSOR  
 0210008 AIR INTAKE FILTER AND BLENDE  
 0210009 EXHAUST BLENDE  
 0210010 HPCS DIESEL GENERATOR CONTROL PANEL  
 0210011 HPCS DIESEL GENERATOR CT AND PT CABLE PANEL  
 0210012 DIESEL GENERATOR  
 0210013 AIR RECEIVER  
 0210014 AIR RECEIVER  
 0210015 BATTERY BANK

021 MOVY LEAKAGE CONTROL SYSTEM  
 0210001 BLOWEP  
 0210002 BLOWER  
 0210003 BLOWER  
 0210004 BLOWER  
 0210005 BLOWER  
 0210006 BLOWER  
 0210007 BLOWER  
 0210008 BLOWER  
 0210009 BLOWER  
 0210010 BLOWER  
 0210011 BLOWER  
 0210012 BLOWER  
 0210013 BLOWER  
 0210014 BLOWER  
 0210015 BLOWER  
 0210016 BLOWER  
 0210017 BLOWER  
 0210018 BLOWER  
 0210019 BLOWER  
 0210020 BLOWER  
 0210021 BLOWER  
 0210022 BLOWER  
 0210023 BLOWER  
 0210024 BLOWER  
 0210025 BLOWER  
 0210026 BLOWER  
 0210027 BLOWER  
 0210028 BLOWER  
 0210029 BLOWER  
 0210030 BLOWER  
 0210031 BLOWER  
 0210032 BLOWER  
 0210033 BLOWER  
 0210034 BLOWER  
 0210035 BLOWER  
 0210036 BLOWER  
 0210037 BLOWER  
 0210038 BLOWER  
 0210039 BLOWER  
 0210040 BLOWER  
 0210041 BLOWER  
 0210042 BLOWER  
 0210043 BLOWER  
 0210044 BLOWER  
 0210045 BLOWER  
 0210046 BLOWER  
 0210047 BLOWER  
 0210048 BLOWER  
 0210049 BLOWER  
 0210050 BLOWER

021 REACTOR CORE ISOLATION COOLING SYSTEM  
 0210001 PUMP  
 0210002 PUMP TURBINE DRIVE  
 0210003 WATER LEG PUMP  
 0210004 BLAND SEAL COMPRESSOR  
 0210005 FUEL PREPARATION MACHINE  
 0210006 FUEL PREPARATION MACHINE  
 0210007 FUEL PREPARATION MACHINE  
 0210008 FUEL PREPARATION MACHINE  
 0210009 FUEL PREPARATION MACHINE  
 0210010 FUEL PREPARATION MACHINE  
 0210011 FUEL PREPARATION MACHINE  
 0210012 FUEL PREPARATION MACHINE  
 0210013 FUEL PREPARATION MACHINE  
 0210014 FUEL PREPARATION MACHINE  
 0210015 FUEL PREPARATION MACHINE  
 0210016 FUEL PREPARATION MACHINE  
 0210017 FUEL PREPARATION MACHINE  
 0210018 FUEL PREPARATION MACHINE  
 0210019 FUEL PREPARATION MACHINE  
 0210020 FUEL PREPARATION MACHINE  
 0210021 FUEL PREPARATION MACHINE  
 0210022 FUEL PREPARATION MACHINE  
 0210023 FUEL PREPARATION MACHINE  
 0210024 FUEL PREPARATION MACHINE  
 0210025 FUEL PREPARATION MACHINE  
 0210026 FUEL PREPARATION MACHINE  
 0210027 FUEL PREPARATION MACHINE  
 0210028 FUEL PREPARATION MACHINE  
 0210029 FUEL PREPARATION MACHINE  
 0210030 FUEL PREPARATION MACHINE  
 0210031 FUEL PREPARATION MACHINE  
 0210032 FUEL PREPARATION MACHINE  
 0210033 FUEL PREPARATION MACHINE  
 0210034 FUEL PREPARATION MACHINE  
 0210035 FUEL PREPARATION MACHINE  
 0210036 FUEL PREPARATION MACHINE  
 0210037 FUEL PREPARATION MACHINE  
 0210038 FUEL PREPARATION MACHINE  
 0210039 FUEL PREPARATION MACHINE  
 0210040 FUEL PREPARATION MACHINE  
 0210041 FUEL PREPARATION MACHINE  
 0210042 FUEL PREPARATION MACHINE  
 0210043 FUEL PREPARATION MACHINE  
 0210044 FUEL PREPARATION MACHINE  
 0210045 FUEL PREPARATION MACHINE  
 0210046 FUEL PREPARATION MACHINE  
 0210047 FUEL PREPARATION MACHINE  
 0210048 FUEL PREPARATION MACHINE  
 0210049 FUEL PREPARATION MACHINE  
 0210050 FUEL PREPARATION MACHINE

021 FUEL HANDLING PLATFORM  
 0210001 CHANNEL HANDLING ADO  
 0210002 CHANNEL HANDLING ADO  
 0210003 CHANNEL HANDLING ADO  
 0210004 CHANNEL HANDLING ADO  
 0210005 CHANNEL HANDLING ADO  
 0210006 CHANNEL HANDLING ADO  
 0210007 CHANNEL HANDLING ADO  
 0210008 CHANNEL HANDLING ADO  
 0210009 CHANNEL HANDLING ADO  
 0210010 CHANNEL HANDLING ADO  
 0210011 CHANNEL HANDLING ADO  
 0210012 CHANNEL HANDLING ADO  
 0210013 CHANNEL HANDLING ADO  
 0210014 CHANNEL HANDLING ADO  
 0210015 CHANNEL HANDLING ADO  
 0210016 CHANNEL HANDLING ADO  
 0210017 CHANNEL HANDLING ADO  
 0210018 CHANNEL HANDLING ADO  
 0210019 CHANNEL HANDLING ADO  
 0210020 CHANNEL HANDLING ADO  
 0210021 CHANNEL HANDLING ADO  
 0210022 CHANNEL HANDLING ADO  
 0210023 CHANNEL HANDLING ADO  
 0210024 CHANNEL HANDLING ADO  
 0210025 CHANNEL HANDLING ADO  
 0210026 CHANNEL HANDLING ADO  
 0210027 CHANNEL HANDLING ADO  
 0210028 CHANNEL HANDLING ADO  
 0210029 CHANNEL HANDLING ADO  
 0210030 CHANNEL HANDLING ADO  
 0210031 CHANNEL HANDLING ADO  
 0210032 CHANNEL HANDLING ADO  
 0210033 CHANNEL HANDLING ADO  
 0210034 CHANNEL HANDLING ADO  
 0210035 CHANNEL HANDLING ADO  
 0210036 CHANNEL HANDLING ADO  
 0210037 CHANNEL HANDLING ADO  
 0210038 CHANNEL HANDLING ADO  
 0210039 CHANNEL HANDLING ADO  
 0210040 CHANNEL HANDLING ADO  
 0210041 CHANNEL HANDLING ADO  
 0210042 CHANNEL HANDLING ADO  
 0210043 CHANNEL HANDLING ADO  
 0210044 CHANNEL HANDLING ADO  
 0210045 CHANNEL HANDLING ADO  
 0210046 CHANNEL HANDLING ADO  
 0210047 CHANNEL HANDLING ADO  
 0210048 CHANNEL HANDLING ADO  
 0210049 CHANNEL HANDLING ADO  
 0210050 CHANNEL HANDLING ADO

021 REACTOR VESSEL SERVICING SYSTEM  
 0210001 HEAD HOISTER PEDestal  
 0210002 HEAD HOISTER PEDestal  
 0210003 HEAD HOISTER PEDestal  
 0210004 HEAD HOISTER PEDestal  
 0210005 HEAD HOISTER PEDestal  
 0210006 HEAD HOISTER PEDestal  
 0210007 HEAD HOISTER PEDestal  
 0210008 HEAD HOISTER PEDestal  
 0210009 HEAD HOISTER PEDestal  
 0210010 HEAD HOISTER PEDestal  
 0210011 HEAD HOISTER PEDestal  
 0210012 HEAD HOISTER PEDestal  
 0210013 HEAD HOISTER PEDestal  
 0210014 HEAD HOISTER PEDestal  
 0210015 HEAD HOISTER PEDestal  
 0210016 HEAD HOISTER PEDestal  
 0210017 HEAD HOISTER PEDestal  
 0210018 HEAD HOISTER PEDestal  
 0210019 HEAD HOISTER PEDestal  
 0210020 HEAD HOISTER PEDestal  
 0210021 HEAD HOISTER PEDestal  
 0210022 HEAD HOISTER PEDestal  
 0210023 HEAD HOISTER PEDestal  
 0210024 HEAD HOISTER PEDestal  
 0210025 HEAD HOISTER PEDestal  
 0210026 HEAD HOISTER PEDestal  
 0210027 HEAD HOISTER PEDestal  
 0210028 HEAD HOISTER PEDestal  
 0210029 HEAD HOISTER PEDestal  
 0210030 HEAD HOISTER PEDestal  
 0210031 HEAD HOISTER PEDestal  
 0210032 HEAD HOISTER PEDestal  
 0210033 HEAD HOISTER PEDestal  
 0210034 HEAD HOISTER PEDestal  
 0210035 HEAD HOISTER PEDestal  
 0210036 HEAD HOISTER PEDestal  
 0210037 HEAD HOISTER PEDestal  
 0210038 HEAD HOISTER PEDestal  
 0210039 HEAD HOISTER PEDestal  
 0210040 HEAD HOISTER PEDestal  
 0210041 HEAD HOISTER PEDestal  
 0210042 HEAD HOISTER PEDestal  
 0210043 HEAD HOISTER PEDestal  
 0210044 HEAD HOISTER PEDestal  
 0210045 HEAD HOISTER PEDestal  
 0210046 HEAD HOISTER PEDestal  
 0210047 HEAD HOISTER PEDestal  
 0210048 HEAD HOISTER PEDestal  
 0210049 HEAD HOISTER PEDestal  
 0210050 HEAD HOISTER PEDestal

021 REACTOR VESSEL SERVICING EQUIPMENT SYSTEM  
 0210001 REACTOR VESSEL SERVICING EQUIPMENT SYSTEM  
 0210002 REACTOR VESSEL SERVICING EQUIPMENT SYSTEM  
 0210003 REACTOR VESSEL SERVICING EQUIPMENT SYSTEM  
 0210004 REACTOR VESSEL SERVICING EQUIPMENT SYSTEM  
 0210005 REACTOR VESSEL SERVICING EQUIPMENT SYSTEM  
 0210006 REACTOR VESSEL SERVICING EQUIPMENT SYSTEM  
 0210007 REACTOR VESSEL SERVICING EQUIPMENT SYSTEM  
 0210008 REACTOR VESSEL SERVICING EQUIPMENT SYSTEM  
 0210009 REACTOR VESSEL SERVICING EQUIPMENT SYSTEM  
 0210010 REACTOR VESSEL SERVICING EQUIPMENT SYSTEM  
 0210011 REACTOR VESSEL SERVICING EQUIPMENT SYSTEM  
 0210012 REACTOR VESSEL SERVICING EQUIPMENT SYSTEM  
 0210013 REACTOR VESSEL SERVICING EQUIPMENT SYSTEM  
 0210014 REACTOR VESSEL SERVICING EQUIPMENT SYSTEM  
 0210015 REACTOR VESSEL SERVICING EQUIPMENT SYSTEM  
 0210016 REACTOR VESSEL SERVICING EQUIPMENT SYSTEM  
 0210017 REACTOR VESSEL SERVICING EQUIPMENT SYSTEM  
 0210018 REACTOR VESSEL SERVICING EQUIPMENT SYSTEM  
 0210019 REACTOR VESSEL SERVICING EQUIPMENT SYSTEM  
 0210020 REACTOR VESSEL SERVICING EQUIPMENT SYSTEM  
 0210021 REACTOR VESSEL SERVICING EQUIPMENT SYSTEM  
 0210022 REACTOR VESSEL SERVICING EQUIPMENT SYSTEM  
 0210023 REACTOR VESSEL SERVICING EQUIPMENT SYSTEM  
 0210024 REACTOR VESSEL SERVICING EQUIPMENT SYSTEM  
 0210025 REACTOR VESSEL SERVICING EQUIPMENT SYSTEM  
 0210026 REACTOR VESSEL SERVICING EQUIPMENT SYSTEM  
 0210027 REACTOR VESSEL SERVICING EQUIPMENT SYSTEM  
 0210028 REACTOR VESSEL SERVICING EQUIPMENT SYSTEM  
 0210029 REACTOR VESSEL SERVICING EQUIPMENT SYSTEM  
 0210030 REACTOR VESSEL SERVICING EQUIPMENT SYSTEM  
 0210031 REACTOR VESSEL SERVICING EQUIPMENT SYSTEM  
 0210032 REACTOR VESSEL SERVICING EQUIPMENT SYSTEM  
 0210033 REACTOR VESSEL SERVICING EQUIPMENT SYSTEM  
 0210034 REACTOR VESSEL SERVICING EQUIPMENT SYSTEM  
 0210035 REACTOR VESSEL SERVICING EQUIPMENT SYSTEM  
 0210036 REACTOR VESSEL SERVICING EQUIPMENT SYSTEM  
 0210037 REACTOR VESSEL SERVICING EQUIPMENT SYSTEM  
 0210038 REACTOR VESSEL SERVICING EQUIPMENT SYSTEM  
 0210039 REACTOR VESSEL SERVICING EQUIPMENT SYSTEM  
 0210040 REACTOR VESSEL SERVICING EQUIPMENT SYSTEM  
 0210041 REACTOR VESSEL SERVICING EQUIPMENT SYSTEM  
 0210042 REACTOR VESSEL SERVICING EQUIPMENT SYSTEM  
 0210043 REACTOR VESSEL SERVICING EQUIPMENT SYSTEM  
 0210044 REACTOR VESSEL SERVICING EQUIPMENT SYSTEM  
 0210045 REACTOR VESSEL SERVICING EQUIPMENT SYSTEM  
 0210046 REACTOR VESSEL SERVICING EQUIPMENT SYSTEM  
 0210047 REACTOR VESSEL SERVICING EQUIPMENT SYSTEM  
 0210048 REACTOR VESSEL SERVICING EQUIPMENT SYSTEM  
 0210049 REACTOR VESSEL SERVICING EQUIPMENT SYSTEM  
 0210050 REACTOR VESSEL SERVICING EQUIPMENT SYSTEM

021 UNDER REACTOR VESSEL SERVICING EQUIPMENT SYSTEM  
 0210001 EQUIPMENT HANDLING PLATFORM  
 0210002 EQUIPMENT HANDLING PLATFORM  
 0210003 EQUIPMENT HANDLING PLATFORM  
 0210004 EQUIPMENT HANDLING PLATFORM  
 0210005 EQUIPMENT HANDLING PLATFORM  
 0210006 EQUIPMENT HANDLING PLATFORM  
 0210007 EQUIPMENT HANDLING PLATFORM  
 0210008 EQUIPMENT HANDLING PLATFORM  
 0210009 EQUIPMENT HANDLING PLATFORM  
 0210010 EQUIPMENT HANDLING PLATFORM  
 0210011 EQUIPMENT HANDLING PLATFORM  
 0210012 EQUIPMENT HANDLING PLATFORM  
 0210013 EQUIPMENT HANDLING PLATFORM  
 0210014 EQUIPMENT HANDLING PLATFORM  
 0210015 EQUIPMENT HANDLING PLATFORM  
 0210016 EQUIPMENT HANDLING PLATFORM  
 0210017 EQUIPMENT HANDLING PLATFORM  
 0210018 EQUIPMENT HANDLING PLATFORM  
 0210019 EQUIPMENT HANDLING PLATFORM  
 0210020 EQUIPMENT HANDLING PLATFORM  
 0210021 EQUIPMENT HANDLING PLATFORM  
 0210022 EQUIPMENT HANDLING PLATFORM  
 0210023 EQUIPMENT HANDLING PLATFORM  
 0210024 EQUIPMENT HANDLING PLATFORM  
 0210025 EQUIPMENT HANDLING PLATFORM  
 0210026 EQUIPMENT HANDLING PLATFORM  
 0210027 EQUIPMENT HANDLING PLATFORM  
 0210028 EQUIPMENT HANDLING PLATFORM  
 0210029 EQUIPMENT HANDLING PLATFORM  
 0210030 EQUIPMENT HANDLING PLATFORM  
 0210031 EQUIPMENT HANDLING PLATFORM  
 0210032 EQUIPMENT HANDLING PLATFORM  
 0210033 EQUIPMENT HANDLING PLATFORM  
 0210034 EQUIPMENT HANDLING PLATFORM  
 0210035 EQUIPMENT HANDLING PLATFORM  
 0210036 EQUIPMENT HANDLING PLATFORM  
 0210037 EQUIPMENT HANDLING PLATFORM  
 0210038 EQUIPMENT HANDLING PLATFORM  
 0210039 EQUIPMENT HANDLING PLATFORM  
 0210040 EQUIPMENT HANDLING PLATFORM  
 0210041 EQUIPMENT HANDLING PLATFORM  
 0210042 EQUIPMENT HANDLING PLATFORM  
 0210043 EQUIPMENT HANDLING PLATFORM  
 0210044 EQUIPMENT HANDLING PLATFORM  
 0210045 EQUIPMENT HANDLING PLATFORM  
 0210046 EQUIPMENT HANDLING PLATFORM  
 0210047 EQUIPMENT HANDLING PLATFORM  
 0210048 EQUIPMENT HANDLING PLATFORM  
 0210049 EQUIPMENT HANDLING PLATFORM  
 0210050 EQUIPMENT HANDLING PLATFORM

021 FUEL TRANSFER SYSTEM  
 0210001 INCLUDED FUEL TRANSFER TUBE  
 0210002 HYDRAULIC POWER SUPPLY (UPPER POOL)  
 0210003 HYDRAULIC POWER SUPPLY (LOWER POOL)  
 0210004 WASTE  
 0210005 REACTOR BUILDING OPERATING PANEL  
 0210006 REACTOR BUILDING WATER  
 0210007 FUEL BUILDING OPERATING PANEL

021 REACTOR WATER CLEANUP SYSTEM  
 0210001 HEAT EXCHANGER (REGENERATIVE)  
 0210002 HEAT EXCHANGER (REGENERATIVE)  
 0210003 HEAT EXCHANGER (REGENERATIVE)  
 0210004 HEAT EXCHANGER (NON-REGENERATIVE)  
 0210005 HEAT EXCHANGER (NON-REGENERATIVE)  
 0210006 PUMP  
 0210007 PUMP  
 0210008 REACTOR SAMPLE STATION

021 NEW FILTER/DEMINERALIZER SYSTEM  
 0210001 PRECIPITANT TANK  
 0210002 RESIN FEED TANK  
 0210003 BACKWASH RECEIVING TANK  
 0210004 HOLDING TANK  
 0210005 HOLDING PUMP  
 0210006 PRECIPITANT PUMP  
 0210007 HEAT EXCHANGER  
 0210008 FILTER/DEMINERALIZER  
 0210009 FILTER/DEMINERALIZER  
 0210010 INSTRUMENTATION PANEL  
 0210011 CONTROL PANEL

021 ALTERNATE DECAT HEAT REMOVAL SYSTEM  
 0210001 HEAT EXCHANGER  
 0210002 PUMP

021 FUEL POOL COOLING AND CLEANUP SYSTEM  
 0210001 WASTE FEED PUMP  
 0210002 SURGE TANK  
 0210003 SURGE TANK  
 0210004 FUEL TRANSFER TUBE DRAIN TANK  
 0210005 HEAT EXCHANGER  
 0210006 HEAT EXCHANGER  
 0210007 HEAT EXCHANGER  
 0210008 HOLDING PUMP  
 0210009 HOLDING PUMP  
 0210010 PRECIPITANT PUMP  
 0210011 DREGULATION PUMP

041 FUEL POOL COOLING AND CLEANUP SYSTEM (CONT.)  
 0410001 DREGULATION PUMP  
 0410002 CASK POOL DRAIN PUMP  
 0410003 FUEL TRANSFER TUBE DRAIN PUMP  
 0410004 FUEL TRANSFER TUBE DRAIN PUMP  
 0410005 BODY FEED PUMP  
 0410006 BODY FEED PUMP  
 0410007 PRECIPITANT DUST COLLECTOR  
 0410008 BODY FEED DUST COLLECTOR  
 0410009 FILTER DEMINERALIZER  
 0410010 FILTER DEMINERALIZER  
 0410011 FILTER DEMINERALIZER  
 0410012 FILTER DEMINERALIZER  
 0410013 POST FILTER  
 0410014 POST FILTER  
 0410015 BODY FEED TANK

041 REACTOR RECIRCULATION VALVE FLOW CONTROL  
 0410001 SUPPRESSION POOL CLEANUP PUMP  
 0410002 SUPPRESSION POOL CLEANUP DEMINERALIZER

041 LIQUID RADIASTE SYSTEM  
 0410001 WASTE COLLECTOR TANK  
 0410002 WASTE COLLECTOR TANK  
 0410003 WASTE SAMPLE TANK  
 0410004 WASTE SAMPLE TANK  
 0410005 FLOOR DRAIN COLLECTOR TANK  
 0410006 FLOOR DRAIN COLLECTOR TANK  
 0410007 FLOOR DRAIN SAMPLE TANK  
 0410008 FLOOR DRAIN SAMPLE TANK  
 0410009 CHEMICAL WASTE TANK  
 0410010 CHEMICAL WASTE TANK  
 0410011 CONCENTRATED W

801 LOCAL PANEL AND RACK SYSTEM (CON-82)

- 801000 PERMANENT POTABLE WATER CONTROL PANEL
- 801005 MAIN CONDENSER CLEAN CONTROL PANEL
- 801006 SERVICE WATER SCREEN CONTROL PANEL
- 801007 AUXILIARY CONDENSER CLEAN CONTROL PANEL
- 801008 TURBINE PLANT SAMPLING ANALYZER PANEL
- 801010 EMERGENCY SERVICE WATER SCREEN CONTROL PANEL - A
- 801010A EMERGENCY SERVICE WATER SCREEN CONTROL PANEL - B
- 801012A INSTRUMENT CABINET - MOVABLE
- 801012B INSTRUMENT CABINET - IMMOVABLE
- 801012C INSTRUMENT CABINET - IMMOVABLE
- 801013 CONDENSATE DENIMERALIZER CONTROL PANEL
- 801014 CONDENSATE FILTER CONTROL PANEL
- 801015 CONDENSATE FILTER CONTROL PANEL
- 801016 MAKEUP WATER PRE-TREATMENT CONTROL PANEL
- 801017 MAKEUP WATER DENIMERALIZER CONTROL PANEL
- 801022A H<sub>2</sub> ANALYZER & VERTICAL PANEL
- 801022B H<sub>2</sub> ANALYZER & VERTICAL PANEL
- 801027 SERVICE WATER CHLORINATION PANEL
- 801028 EMERGENCY SERVICE WATER CHLORINATION PANEL
- 801031A RADWASTE CONTROL PANEL
- 801031B RADWASTE CONTROL PANEL
- 801032 BULK HYDROGEN STORAGE GAUGE PANEL
- 801033 #2 SYSTEM HVAC PANEL
- 801034 SODIUM HYPOCHLORITE GENERATION CONTROL PANEL
- 801035 DECOLORIZATION CONTROL PANEL
- 801037 PUMP ROOM COOLING HVAC CONTROL PANEL
- 801038 EC COOLING SYSTEM AND ES #20 SYSTEM INSTRUMENT RACK
- 801040 #20 SYSTEM HVAC PANEL
- 801041 #25 SYSTEM HVAC PANEL
- 801042 #25 SYSTEM HVAC PANEL
- 801044 TURBINE BUILDING CHILLED WATER CONTROL PANEL
- 801049 #37 SYSTEM VENTILATION FAN SC
- 801051 SERVICE AIR COMPRESSOR CONTROL PANEL
- 801052 CHILLING TOWER CHLORINATION CONTROL PANEL
- 801053 CHILLING TOWER RESIDUAL CHLORINE ANALYZER PANEL
- 801054A STANDBY DIESEL - ENGINE CONTROL PANEL
- 801054B STANDBY DIESEL - ENGINE CONTROL PANEL
- 801055A STANDBY DIESEL - GENERATOR CONTROL PANEL
- 801055B STANDBY DIESEL - GENERATOR CONTROL PANEL
- 801057 INSTRUMENT AIR COMPRESSOR CONTROL PANEL
- 801061 STEAM SEAL EVAPORATOR CONTROL PANEL
- 801062 STEAM SEAL CONTROL PANEL
- 801063 COOLING TOWER ACID ADDITION CONTROL PANEL
- 801064 RADWASTE BUILDING VENTILATION EXHAUST RADIATION MONITOR
- 801065 INTERMEDIATE BUILDING VENTILATION EXHAUST RADIATION MONITOR
- 801068 FUEL HANDLING BUILDING VENTILATION EXHAUST RADIATION MONITOR
- 801069 CONTROL ROOM AIRBORNE RADIATION MONITOR
- 801070 CONTAINMENT EXHAUST RADIATION MONITOR
- 801071 DRYWELL ATMOSPHERE RADIATION MONITOR
- 801072 CONTAINMENT ATMOSPHERE RADIATION MONITOR
- 801073 AMBULIS EXHAUST TRIM "A" RADIATION MONITOR
- 801074 AMBULIS EXHAUST TRIM "B" RADIATION MONITOR
- 801075A INTERBUS TRANSFORMER LH-1-A PROTECTION RELAY PANEL
- 801075B INTERBUS TRANSFORMER LH-1-A PROTECTION RELAY PANEL
- 801076C INTERBUS TRANSFORMER LH-1-A PROTECTION RELAY PANEL
- 801077A EMERGENCY SERVICE WATER SCREEN CONTROL STATION A AND B
- 801077B EMERGENCY SERVICE WATER SCREEN CONTROL STATION A AND B
- 801078A SERVICE WATER SCREEN WASH CONTROL STATION A AND B
- 801078B SERVICE WATER SCREEN WASH CONTROL STATION A AND B
- 801084A RHR TUBE BUNDLE WATER REMOVAL PUMP
- 801084B RHR TUBE BUNDLE WATER REMOVAL PUMP
- 801085 OFF-GAS BUILDING VENTILATION EXHAUST RADIATION MONITOR
- 801086 UNIT VENT 1 RADIATION MONITOR
- 801075 AUXILIARY BUILDING VENTILATION EXHAUST RADIATION MONITOR
- 801144 TERMINATION CABINET
- 801081 MOISTURE SEPARATOR REHEATER CONTROL PANEL
- 801082 SOLID RADWASTE DISPOSAL CONTROL PANEL
- 801083 POST LOCA HYDROGEN RECOMBINER A CONTROL PANEL
- 801085 INSTRUMENT AIR DRYER A CONTROL PANEL
- 801086 INSTRUMENT AIR DRYER B CONTROL PANEL
- 801087 INSTRUMENT AIR DRYER C CONTROL PANEL
- 801088 FEEDWATER AND REHEAT STEAM SYSTEM INSTRUMENT RACK
- 801100 DIESEL FINE PUMP CONTROL PANEL
- 801102 ELECTRIC FINE PUMP CONTROL PANEL
- 801132 OFF-GAS VAULT SYSTEM REFRIGERATION PANEL
- 801133A TRAVELING BELT FILTER CONTROL PANEL
- 801133B TRAVELING BELT FILTER CONTROL PANEL
- 801134 CONTAINMENT ATMOSPHERE MONITOR INSTRUMENT PANEL A
- 801134B CONTAINMENT ATMOSPHERE MONITOR INSTRUMENT PANEL B
- 801148 OFF-GAS VENT PIPE AIR SAMPLING PANEL
- 801149 PLANT VENT AIR SAMPLING RACK
- 801189 OFF-GAS VENT PIPE RADIATION MONITOR
- 801190 MAINTENANCE CALIBRATION PATCH PANEL
- 801192 AUXILIARY BUILDING AND STEAM TUNNEL HVAC CONTROL PANEL
- 801193 FUEL POOL FILTER DENIMERALIZER CONTROL PANEL
- 801195A CONDENSATE FILTER UNIT A INSTRUMENT RACK
- 801195B CONDENSATE FILTER UNIT B INSTRUMENT RACK
- 801195C CONDENSATE FILTER UNIT C INSTRUMENT RACK
- 801195D CONDENSATE FILTER UNIT D INSTRUMENT RACK
- 801195E CONDENSATE FILTER UNIT E INSTRUMENT RACK
- 801195F CONDENSATE FILTER UNIT F INSTRUMENT RACK
- 801195G CONDENSATE FILTER UNIT G INSTRUMENT RACK
- 801195H CONDENSATE FILTER UNIT H INSTRUMENT RACK
- 801195I CONDENSATE FILTER PREDDAT TANK INSTRUMENT RACK
- 801176 H<sub>2</sub> AND COOLING WATER CONTROL PANEL
- 801177A #22/72A SYSTEM HVAC PANEL A
- 801177B #22/72A SYSTEM HVAC PANEL B
- 801178 EMERGENCY CLOSED COOLING SYSTEM INSTRUMENT RACK
- 801179 MOISTURE SEPARATOR DRAIN TANK - A LEVEL INSTRUMENT RACK
- 801180 MOISTURE SEPARATOR DRAIN TANK - B LEVEL INSTRUMENT RACK
- 801181 DRAIN TANK - A - LEVEL CONTROL RACK
- 801182 HOTWELL PUMP'S PRESSURE TRANSMITTER RACK
- 801183 TURB BLS CONDENSATE REHEAT PUMP A & B LEVEL INSTR RACK
- 801184 MOISTURE SEPARATOR DRAIN TANK - B - LEVEL INSTRUMENT RACK
- 801185 TURBINE BUILDING CLOSED COOLING PUMP DISCHARGE INSTRUMENT RACK
- 801186 MAIN STEAM LINES PRESSURE TRANSMITTER RACK
- 801187 INSTRUMENTATION RACK
- 801188 INSTRUMENTATION RACK
- 801189 INSTRUMENTATION RACK
- 801190 INSTRUMENTATION RACK
- 801191 INSTRUMENTATION RACK
- 801192 INSTRUMENTATION RACK
- 801193 INSTRUMENTATION RACK
- 801194 INSTRUMENTATION RACK
- 801195 INSTRUMENTATION RACK
- 801196 FIRE PUMP CONTROLLER PANEL
- 801197 TURBINE BUILDING CHILLER CONTROL PANEL A
- 801198 TURBINE BUILDING CHILLER CONTROL PANEL B
- 801199 CONTAINMENT CHILLER A CONTROL PANEL
- 801200 CONTAINMENT CHILLER B CONTROL PANEL
- 801201 CONTROL COMPLEX CHILLER A CONTROL PANEL
- 801202 CONTROL COMPLEX CHILLER B CONTROL PANEL
- 801203 CONTROL COMPLEX CHILLER C CONTROL PANEL
- 801204 OFF-GAS VAULT BRINE COOLING CONTROL PANEL A1
- 801205 OFF-GAS VAULT BRINE COOLING CONTROL PANEL A2
- 801206 OFF-GAS VAULT BRINE COOLING CONTROL PANEL B1
- 801207 OFF-GAS VAULT BRINE COOLING CONTROL PANEL B2
- 801208 OFF-GAS VAULT BRINE COOLING CONTROL PANEL C1
- 801209 OFF-GAS VAULT BRINE COOLING CONTROL PANEL C2
- 801210 TURBINE PLANT SAMPLE EXTRACTION PUMP CONTROL PANEL
- 801211 HOT WATER HEATING SYSTEM CONTROL PANEL
- 801212 MOISTURE SEPARATOR REHEATER A2 INSTRUMENT RACK
- 801213 TURBINE BUILDING AND HEATER BAY VENT RADIATION MONITOR (D17/K55)
- 801214 TURBINE BUILDING AND HEATER BAY AUTO ISOKINETIC SAMPLE SINK

802 LOCAL PANEL AND RACK SYSTEM (CON-82)

- 802000 DENIMERALIZER CONTROL PANEL
- 802001 EMERGENCY CLOSED COOLING WATER TEMPERATURE (MOD) STATION
- 802002 PH SAMPLE - CHEMICAL WASTE TANKS - PANEL
- 802003 FAN AND HEATER DIVISION 2 CONTROL STATION
- 802004 44A KEY CONTROL PANEL
- 802005 KIRK KEY CONTROL PANEL
- 802006 GAS BOTTLE RACK
- 802007 ERIS BAC VACUUM
- 802008 LOCAL ERIS DAC
- 802009 HSS AND HOP PIPE TEST CABINET
- 802010 HOP PIPE TEST CABINET
- 802011 REVITE SHUTDOWN CS3 SP3S ELECTRONIC CABINET
- 802012 STANDBY DIESEL - SPEED CONTROL PANEL
- 802013 STANDBY DIESEL - SPEED CONTROL PANEL
- 802014 ADRR PROCESOR CONTROL PANEL
- 802015 ADRR SV FILTER CONTROL PANEL
- 802016 ADRR SV FILTER INSTRUMENT RACK
- 802017 ERIS BAC VACUUM
- 802018 HSS AND HOP PIPE TEST CABINET
- 802019 HOP PIPE TEST CABINET
- 802020 REVITE SHUTDOWN CS3 SP3S ELECTRONIC CABINET
- 802021 STANDBY DIESEL - SPEED CONTROL PANEL
- 802022 STANDBY DIESEL - SPEED CONTROL PANEL
- 802023 ADRR PROCESOR CONTROL PANEL
- 802024 ADRR SV FILTER INSTRUMENT RACK
- 802025 ERIS BAC VACUUM
- 802026 HSS AND HOP PIPE TEST CABINET
- 802027 HOP PIPE TEST CABINET
- 802028 REVITE SHUTDOWN CS3 SP3S ELECTRONIC CABINET
- 802029 STANDBY DIESEL - SPEED CONTROL PANEL
- 802030 STANDBY DIESEL - SPEED CONTROL PANEL
- 802031 ADRR PROCESOR CONTROL PANEL
- 802032 ADRR SV FILTER CONTROL PANEL
- 802033 ADRR SV FILTER INSTRUMENT RACK
- 802034 ERIS BAC VACUUM
- 802035 HSS AND HOP PIPE TEST CABINET
- 802036 HOP PIPE TEST CABINET
- 802037 REVITE SHUTDOWN CS3 SP3S ELECTRONIC CABINET
- 802038 STANDBY DIESEL - SPEED CONTROL PANEL
- 802039 STANDBY DIESEL - SPEED CONTROL PANEL
- 802040 ADRR PROCESOR CONTROL PANEL
- 802041 ADRR SV FILTER CONTROL PANEL
- 802042 ADRR SV FILTER INSTRUMENT RACK
- 802043 ERIS BAC VACUUM
- 802044 HSS AND HOP PIPE TEST CABINET
- 802045 HOP PIPE TEST CABINET
- 802046 REVITE SHUTDOWN CS3 SP3S ELECTRONIC CABINET
- 802047 STANDBY DIESEL - SPEED CONTROL PANEL
- 802048 STANDBY DIESEL - SPEED CONTROL PANEL
- 802049 ADRR PROCESOR CONTROL PANEL
- 802050 ADRR SV FILTER CONTROL PANEL
- 802051 ADRR SV FILTER INSTRUMENT RACK
- 802052 ERIS BAC VACUUM
- 802053 HSS AND HOP PIPE TEST CABINET
- 802054 HOP PIPE TEST CABINET
- 802055 REVITE SHUTDOWN CS3 SP3S ELECTRONIC CABINET
- 802056 STANDBY DIESEL - SPEED CONTROL PANEL
- 802057 STANDBY DIESEL - SPEED CONTROL PANEL
- 802058 ADRR PROCESOR CONTROL PANEL
- 802059 ADRR SV FILTER CONTROL PANEL
- 802060 ADRR SV FILTER INSTRUMENT RACK
- 802061 ERIS BAC VACUUM
- 802062 HSS AND HOP PIPE TEST CABINET
- 802063 HOP PIPE TEST CABINET
- 802064 REVITE SHUTDOWN CS3 SP3S ELECTRONIC CABINET
- 802065 STANDBY DIESEL - SPEED CONTROL PANEL
- 802066 STANDBY DIESEL - SPEED CONTROL PANEL
- 802067 ADRR PROCESOR CONTROL PANEL
- 802068 ADRR SV FILTER CONTROL PANEL
- 802069 ADRR SV FILTER INSTRUMENT RACK
- 802070 ERIS BAC VACUUM
- 802071 HSS AND HOP PIPE TEST CABINET
- 802072 HOP PIPE TEST CABINET
- 802073 REVITE SHUTDOWN CS3 SP3S ELECTRONIC CABINET
- 802074 STANDBY DIESEL - SPEED CONTROL PANEL
- 802075 STANDBY DIESEL - SPEED CONTROL PANEL
- 802076 ADRR PROCESOR CONTROL PANEL
- 802077 ADRR SV FILTER CONTROL PANEL
- 802078 ADRR SV FILTER INSTRUMENT RACK
- 802079 ERIS BAC VACUUM
- 802080 HSS AND HOP PIPE TEST CABINET
- 802081 HOP PIPE TEST CABINET
- 802082 REVITE SHUTDOWN CS3 SP3S ELECTRONIC CABINET
- 802083 STANDBY DIESEL - SPEED CONTROL PANEL
- 802084 STANDBY DIESEL - SPEED CONTROL PANEL
- 802085 ADRR PROCESOR CONTROL PANEL
- 802086 ADRR SV FILTER CONTROL PANEL
- 802087 ADRR SV FILTER INSTRUMENT RACK
- 802088 ERIS BAC VACUUM
- 802089 HSS AND HOP PIPE TEST CABINET
- 802090 HOP PIPE TEST CABINET
- 802091 REVITE SHUTDOWN CS3 SP3S ELECTRONIC CABINET
- 802092 STANDBY DIESEL - SPEED CONTROL PANEL
- 802093 STANDBY DIESEL - SPEED CONTROL PANEL
- 802094 ADRR PROCESOR CONTROL PANEL
- 802095 ADRR SV FILTER CONTROL PANEL
- 802096 ADRR SV FILTER INSTRUMENT RACK
- 802097 ERIS BAC VACUUM
- 802098 HSS AND HOP PIPE TEST CABINET
- 802099 HOP PIPE TEST CABINET
- 802100 REVITE SHUTDOWN CS3 SP3S ELECTRONIC CABINET
- 802101 STANDBY DIESEL - SPEED CONTROL PANEL
- 802102 STANDBY DIESEL - SPEED CONTROL PANEL
- 802103 ADRR PROCESOR CONTROL PANEL
- 802104 ADRR SV FILTER CONTROL PANEL
- 802105 ADRR SV FILTER INSTRUMENT RACK
- 802106 ERIS BAC VACUUM
- 802107 HSS AND HOP PIPE TEST CABINET
- 802108 HOP PIPE TEST CABINET
- 802109 REVITE SHUTDOWN CS3 SP3S ELECTRONIC CABINET
- 802110 STANDBY DIESEL - SPEED CONTROL PANEL
- 802111 STANDBY DIESEL - SPEED CONTROL PANEL
- 802112 ADRR PROCESOR CONTROL PANEL
- 802113 ADRR SV FILTER CONTROL PANEL
- 802114 ADRR SV FILTER INSTRUMENT RACK
- 802115 ERIS BAC VACUUM
- 802116 HSS AND HOP PIPE TEST CABINET
- 802117 HOP PIPE TEST CABINET
- 802118 REVITE SHUTDOWN CS3 SP3S ELECTRONIC CABINET
- 802119 STANDBY DIESEL - SPEED CONTROL PANEL
- 802120 STANDBY DIESEL - SPEED CONTROL PANEL
- 802121 ADRR PROCESOR CONTROL PANEL
- 802122 ADRR SV FILTER CONTROL PANEL
- 802123 ADRR SV FILTER INSTRUMENT RACK
- 802124 ERIS BAC VACUUM
- 802125 HSS AND HOP PIPE TEST CABINET
- 802126 HOP PIPE TEST CABINET
- 802127 REVITE SHUTDOWN CS3 SP3S ELECTRONIC CABINET
- 802128 STANDBY DIESEL - SPEED CONTROL PANEL
- 802129 STANDBY DIESEL - SPEED CONTROL PANEL
- 802130 ADRR PROCESOR CONTROL PANEL
- 802131 ADRR SV FILTER CONTROL PANEL
- 802132 ADRR SV FILTER INSTRUMENT RACK
- 802133 ERIS BAC VACUUM
- 802134 HSS AND HOP PIPE TEST CABINET
- 802135 HOP PIPE TEST CABINET
- 802136 REVITE SHUTDOWN CS3 SP3S ELECTRONIC CABINET
- 802137 STANDBY DIESEL - SPEED CONTROL PANEL
- 802138 STANDBY DIESEL - SPEED CONTROL PANEL
- 802139 ADRR PROCESOR CONTROL PANEL
- 802140 ADRR SV FILTER CONTROL PANEL
- 802141 ADRR SV FILTER INSTRUMENT RACK
- 802142 ERIS BAC VACUUM
- 802143 HSS AND HOP PIPE TEST CABINET
- 802144 HOP PIPE TEST CABINET
- 802145 REVITE SHUTDOWN CS3 SP3S ELECTRONIC CABINET
- 802146 STANDBY DIESEL - SPEED CONTROL PANEL
- 802147 STANDBY DIESEL - SPEED CONTROL PANEL
- 802148 ADRR PROCESOR CONTROL PANEL
- 802149 ADRR SV FILTER CONTROL PANEL
- 802150 ADRR SV FILTER INSTRUMENT RACK
- 802151 ERIS BAC VACUUM
- 802152 HSS AND HOP PIPE TEST CABINET
- 802153 HOP PIPE TEST CABINET
- 802154 REVITE SHUTDOWN CS3 SP3S ELECTRONIC CABINET
- 802155 STANDBY DIESEL - SPEED CONTROL PANEL
- 802156 STANDBY DIESEL - SPEED CONTROL PANEL
- 802157 ADRR PROCESOR CONTROL PANEL
- 802158 ADRR SV FILTER CONTROL PANEL
- 802159 ADRR SV FILTER INSTRUMENT RACK
- 802160 ERIS BAC VACUUM
- 802161 HSS AND HOP PIPE TEST CABINET
- 802162 HOP PIPE TEST CABINET
- 802163 REVITE SHUTDOWN CS3 SP3S ELECTRONIC CABINET
- 802164 STANDBY DIESEL - SPEED CONTROL PANEL
- 802165 STANDBY DIESEL - SPEED CONTROL PANEL
- 802166 ADRR PROCESOR CONTROL PANEL
- 802167 ADRR SV FILTER CONTROL PANEL
- 802168 ADRR SV FILTER INSTRUMENT RACK
- 802169 ERIS BAC VACUUM
- 802170 HSS AND HOP PIPE TEST CABINET
- 802171 HOP PIPE TEST CABINET
- 802172 REVITE SHUTDOWN CS3 SP3S ELECTRONIC CABINET
- 802173 STANDBY DIESEL - SPEED CONTROL PANEL
- 802174 STANDBY DIESEL - SPEED CONTROL PANEL
- 802175 ADRR PROCESOR CONTROL PANEL
- 802176 ADRR SV FILTER CONTROL PANEL
- 802177 ADRR SV FILTER INSTRUMENT RACK
- 802178 ERIS BAC VACUUM
- 802179 HSS AND HOP PIPE TEST CABINET
- 802180 HOP PIPE TEST CABINET
- 802181 REVITE SHUTDOWN CS3 SP3S ELECTRONIC CABINET
- 802182 STANDBY DIESEL - SPEED CONTROL PANEL
- 802183 STANDBY DIESEL - SPEED CONTROL PANEL
- 802184 ADRR PROCESOR CONTROL PANEL
- 802185 ADRR SV FILTER CONTROL PANEL
- 802186 ADRR SV FILTER INSTRUMENT RACK
- 802187 ERIS BAC VACUUM
- 802188 HSS AND HOP PIPE TEST CABINET
- 802189 HOP PIPE TEST CABINET
- 802190 REVITE SHUTDOWN CS3 SP3S ELECTRONIC CABINET
- 802191 STANDBY DIESEL - SPEED CONTROL PANEL
- 802192 STANDBY DIESEL - SPEED CONTROL PANEL
- 802193 ADRR PROCESOR CONTROL PANEL
- 802194 ADRR SV FILTER CONTROL PANEL
- 802195 ADRR SV FILTER INSTRUMENT RACK
- 802196 ERIS BAC VACUUM
- 802197 HSS AND HOP PIPE TEST CABINET
- 802198 HOP PIPE TEST CABINET
- 802199 REVITE SHUTDOWN CS3 SP3S ELECTRONIC CABINET
- 802200 STANDBY DIESEL - SPEED CONTROL PANEL
- 802201 STANDBY DIESEL - SPEED CONTROL PANEL
- 802202 ADRR PROCESOR CONTROL PANEL
- 802203 ADRR SV FILTER CONTROL PANEL
- 802204 ADRR SV FILTER INSTRUMENT RACK
- 802205 ERIS BAC VACUUM
- 802206 HSS AND HOP PIPE TEST CABINET
- 802207 HOP PIPE TEST CABINET
- 802208 REVITE SHUTDOWN CS3 SP3S ELECTRONIC CABINET
- 802209 STANDBY DIESEL - SPEED CONTROL PANEL
- 802210 STANDBY DIESEL - SPEED CONTROL PANEL
- 802211 ADRR PROCESOR CONTROL PANEL
- 802212 ADRR SV FILTER CONTROL PANEL
- 802213 ADRR SV FILTER INSTRUMENT RACK
- 802214 ERIS BAC VACUUM
- 802215 HSS AND HOP PIPE TEST CABINET
- 802216 HOP PIPE TEST CABINET
- 802217 REVITE SHUTDOWN CS3 SP3S ELECTRONIC CABINET
- 802218 STANDBY DIESEL - SPEED CONTROL PANEL
- 802219 STANDBY DIESEL - SPEED CONTROL PANEL
- 802220 ADRR PROCESOR CONTROL PANEL
- 802221 ADRR SV FILTER CONTROL PANEL
- 802222 ADRR SV FILTER INSTRUMENT RACK
- 802223 ERIS BAC VACUUM
- 802224 HSS AND HOP PIPE TEST CABINET
- 802225 HOP PIPE TEST CABINET
- 802226 REVITE SHUTDOWN CS3 SP3S ELECTRONIC CABINET
- 802227 STANDBY DIESEL - SPEED CONTROL PANEL
- 802228 STANDBY DIESEL - SPEED CONTROL PANEL
- 802229 ADRR PROCESOR CONTROL PANEL
- 802230 ADRR SV FILTER CONTROL PANEL
- 802231 ADRR SV FILTER INSTRUMENT RACK
- 802232 ERIS BAC VACUUM
- 802233 HSS AND HOP PIPE TEST CABINET
- 802234 HOP PIPE TEST CABINET
- 802235 REVITE SHUTDOWN CS3 SP3S ELECTRONIC CABINET
- 802236 STANDBY DIESEL - SPEED CONTROL PANEL
- 802237 STANDBY DIESEL - SPEED CONTROL PANEL
- 802238 ADRR PROCESOR CONTROL PANEL
- 802239 ADRR SV FILTER CONTROL PANEL
- 802240 ADRR SV FILTER INSTRUMENT RACK
- 802241 ERIS BAC VACUUM
- 802242 HSS AND HOP PIPE TEST CABINET
- 802243 HOP PIPE TEST CABINET
- 802244 REVITE SHUTDOWN CS3 SP3S ELECTRONIC CABINET
- 802245 STANDBY DIESEL - SPEED CONTROL PANEL
- 802246 STANDBY DIESEL - SPEED CONTROL PANEL
- 802247 ADRR PROCESOR CONTROL PANEL
- 802248 ADRR SV FILTER CONTROL PANEL
- 802249 ADRR SV FILTER INSTRUMENT RACK
- 802250 ERIS BAC VACUUM
- 802251 HSS AND HOP PIPE TEST CABINET
- 802252 HOP PIPE TEST CABINET
- 802253 REVITE SHUTDOWN CS3 SP3S ELECTRONIC CABINET
- 802254 STANDBY DIESEL - SPEED CONTROL PANEL
- 802255 STANDBY DIESEL - SPEED CONTROL PANEL
- 802256 ADRR PROCESOR CONTROL PANEL
- 802257 ADRR SV FILTER CONTROL PANEL
- 802258 ADRR SV FILTER INSTRUMENT RACK
- 802259 ERIS BAC VACUUM
- 802260 HSS AND HOP PIPE TEST CABINET
- 802261 HOP PIPE TEST CABINET
- 802262 REVITE SHUTDOWN CS3 SP3S ELECTRONIC CABINET
- 802263 STANDBY DIESEL - SPEED CONTROL PANEL
- 802264 STANDBY DIESEL - SPEED CONTROL PANEL
- 802265 ADRR PROCESOR CONTROL PANEL
- 802266 ADRR SV FILTER CONTROL PANEL
- 802267 ADRR SV FILTER INSTRUMENT RACK
- 802268 ERIS BAC VACUUM
- 802269 HSS AND HOP PIPE TEST CABINET
- 802270 HOP PIPE TEST CABINET
- 802271 REVITE SHUTDOWN CS3 SP3S ELECTRONIC CABINET
- 802272 STANDBY DIESEL - SPEED CONTROL PANEL
- 802273 STANDBY DIESEL - SPEED CONTROL PANEL
- 802274 ADRR PROCESOR CONTROL PANEL
- 802275 ADRR SV FILTER CONTROL PANEL
- 802276 ADRR SV FILTER INSTRUMENT RACK
- 802277 ERIS BAC VACUUM
- 802278 HSS AND HOP PIPE TEST CABINET
- 802279 HOP PIPE TEST CABINET
- 802280 REVITE SHUTDOWN CS3 SP3S ELECTRONIC CABINET
- 802281 STANDBY DIESEL - SPEED CONTROL PANEL
- 802282 STANDBY DIESEL - SPEED CONTROL PANEL
- 802283 ADRR PROCESOR CONTROL PANEL
- 802284 ADRR SV FILTER CONTROL PANEL
- 802285 ADRR SV FILTER INSTRUMENT RACK
- 802286 ERIS BAC VACUUM
- 802287 HSS AND HOP PIPE TEST CABINET
- 802288 HOP PIPE TEST CABINET
- 802289 REVITE SHUTDOWN CS3 SP3S ELECTRONIC CABINET
- 802290 STANDBY DIESEL - SPEED CONTROL PANEL
- 802291 STANDBY DIESEL - SPEED CONTROL PANEL
- 802292 ADRR PROCESOR CONTROL PANEL
- 802293 ADRR SV FILTER CONTROL PANEL
- 802294 ADRR SV FILTER INSTRUMENT RACK
- 802295 ERIS BAC VACUUM
- 802296 HSS AND HOP PIPE TEST CABINET
- 802297 HOP PIPE TEST CABINET
- 802298 REVITE SHUTDOWN CS3 SP3S ELECTRONIC CABINET
- 802299 STANDBY DIESEL - SPEED CONTROL PANEL
- 802300 STANDBY DIESEL - SPEED CONTROL PANEL
- 802301 ADRR PROCESOR CONTROL PANEL
- 802302 ADRR SV FILTER CONTROL PANEL
- 802303 ADRR SV FILTER INSTRUMENT RACK
- 802304 ERIS BAC VACUUM
- 802305 HSS AND HOP PIPE TEST CABINET
- 802306 HOP PIPE TEST CABINET
- 802307 REVITE SHUTDOWN CS3 SP3S ELECTRONIC CABINET
- 802308 STANDBY DIESEL - SPEED CONTROL PANEL
- 802309 STANDBY DIESEL - SPEED CONTROL PANEL
- 802310 ADRR PROCESOR CONTROL PANEL
- 802311 ADRR SV FILTER CONTROL PANEL
- 802312 ADRR SV FILTER INSTRUMENT RACK
- 802313 ERIS BAC VACUUM
- 802314 HSS AND HOP PIPE TEST CABINET
- 802315 HOP PIPE TEST CABINET
- 802316 REVITE SHUTDOWN CS3 SP3S ELECTRONIC CABINET
- 802317 STANDBY DIESEL - SPEED CONTROL PANEL
- 802318 STANDBY DIESEL - SPEED CONTROL PANEL
- 802319 ADRR PROCESOR CONTROL PANEL
- 802320 ADRR SV FILTER CONTROL PANEL
- 802321 ADRR SV FILTER INSTRUMENT RACK
- 802322 ERIS BAC VACUUM
- 802323 HSS AND HOP PIPE TEST CABINET
- 802324 HOP PIPE TEST CABINET
- 802325 REVITE SHUTDOWN CS3 SP3S ELECTRONIC CABINET
- 802326 STANDBY DIESEL - SPEED CONTROL PANEL
- 802327 STANDBY DIESEL - SPEED CONTROL PANEL
- 802328 ADRR PROCESOR CONTROL PANEL
- 802329 ADRR SV FILTER CONTROL PANEL
- 802330 ADRR SV FILTER INSTRUMENT RACK
- 802331 ERIS BAC VACUUM
- 802332 HSS AND HOP PIPE TEST CABINET
- 802333 HOP PIPE TEST CABINET
- 802334 REVITE SHUTDOWN CS3 SP3S ELECTRONIC CABINET
- 802335 STANDBY DIESEL - SPEED CONTROL PANEL
- 802336 STANDBY DIESEL - SPEED CONTROL PANEL
- 802337 ADRR PROCESOR CONTROL PANEL
- 802338 ADRR SV FILTER CONTROL PANEL
- 802339 ADRR SV FILTER INSTRUMENT RACK
- 802340 ERIS BAC VACUUM
- 802341 HSS AND HOP PIPE TEST CABINET
- 802342 HOP PIPE TEST CABINET
- 802343 REVITE SHUTDOWN CS3 SP3S ELECTRONIC CABINET
- 802344 STANDBY DIESEL - SPEED CONTROL PANEL
- 802345 STANDBY DIESEL - SPEED CONTROL PANEL
- 802346 ADRR PROCESOR CONTROL PANEL
- 802347 ADRR SV FILTER CONTROL PANEL
- 802348 ADRR SV FILTER INSTRUMENT RACK
- 802349 ERIS BAC VACUUM
- 802350 HSS AND HOP PIPE TEST CABINET
- 802351 HOP PIPE TEST CABINET
- 802352 REVITE SHUTDOWN CS3 SP3S ELECTRONIC CABINET
- 802353 STANDBY DIESEL - SPEED CONTROL PANEL
- 802354 STANDBY DIESEL - SPEED CONTROL PANEL
- 802355 ADRR PROCESOR CONTROL PANEL
- 802356 ADRR SV FILTER CONTROL PANEL
- 802357 ADRR SV FILTER INSTRUMENT RACK
- 802358 ERIS BAC VACUUM
- 802359 HSS AND HOP PIPE TEST CABINET
- 802360 HOP PIPE TEST CABINET
- 802361 REVITE SHUTDOWN CS3 SP3S ELECTRONIC CABINET
- 802362 STANDBY DIESEL - SPEED CONTROL PANEL
- 802363 STANDBY DIESEL - SPEED CONTROL PANEL
- 802364 ADRR PROCESOR CONTROL PANEL
- 802365 ADRR SV FILTER CONTROL PANEL
- 802366 ADRR SV FILTER INSTRUMENT RACK
- 802367 ERIS BAC VACUUM
- 802368 HSS AND HOP PIPE TEST CABINET
- 802369 HOP PIPE TEST CABINET
- 802370 REVITE SHUTDOWN CS3 SP3S ELECTRONIC CABINET
- 802371 STANDBY DIESEL - SPEED CONTROL PANEL
- 802372 STANDBY DIESEL - SPEED CONTROL PANEL
- 802373 ADRR PROCESOR CONTROL PANEL
- 802374 ADRR SV FILTER CONTROL PANEL
- 802375 ADRR SV FILTER INSTRUMENT RACK
- 802376 ERIS BAC VACUUM
- 802377 HSS AND HOP PIPE TEST CABINET
- 802378 HOP PIPE TEST CABINET
- 802379 REVITE SHUTDOWN CS3 SP3S ELECTRONIC CABINET
- 802380 STANDBY DIESEL - SPEED CONTROL PANEL
- 802381 STANDBY DIESEL - SPEED CONTROL PANEL
- 802382 ADRR PROCESOR CONTROL PANEL
- 802383 ADRR SV FILTER CONTROL PANEL
- 802384 ADRR SV FILTER INSTRUMENT RACK
- 802385 ERIS BAC VACUUM
- 802386 HSS AND HOP PIPE TEST CABINET
- 802387 HOP PIPE TEST CABINET
- 802388 REVITE SHUTDOWN CS3 SP3S ELECTRONIC CABINET
- 802389 STANDBY DIESEL - SPEED CONTROL PANEL
- 802390 STANDBY DIESEL - SPEED CONTROL PANEL
- 802391 ADRR PROCESOR CONTROL PANEL
- 802392 ADRR SV FILTER CONTROL PANEL
- 802393 ADRR SV FILTER INSTRUMENT RACK
- 802394 ERIS BAC VACUUM
- 802395 HSS AND HOP PIPE TEST CABINET
- 802396 HOP PIPE TEST CABINET
- 802397 REVITE SHUTDOWN CS3 SP3S ELECTRONIC CABINET
- 802398 STANDBY DIESEL - SPEED CONTROL PANEL
- 802399 STANDBY DIESEL - SPEED CONTROL PANEL
- 802400 ADRR PROCESOR CONTROL PANEL
- 802401 ADRR SV FILTER CONTROL PANEL
- 802402 ADRR SV FILTER INSTRUMENT RACK
- 802403 ERIS BAC VACUUM
- 802404 HSS AND HOP PIPE TEST CABINET
- 802405 HOP PIPE TEST CABINET
- 802406 REVITE SHUTDOWN CS3 SP3S ELECTRONIC CABINET
- 802407 STANDBY DIESEL - SPEED CONTROL PANEL
- 802408 STANDBY DIESEL - SPEED CONTROL PANEL
- 802409 ADRR PROCESOR CONTROL PANEL
- 802410 ADRR SV FILTER CONTROL PANEL
- 802411 ADRR SV FILTER INSTRUMENT RACK
- 802412 ERIS BAC VACUUM
- 802413 HSS AND HOP PIPE TEST CABINET
- 802414 HOP PIPE TEST CABINET
- 802415 REVITE SHUTDOWN CS3 SP3S ELECTRONIC CABINET
- 802416 STANDBY DIESEL - SPEED CONTROL PANEL
- 802417 STANDBY DIESEL - SPEED CONTROL PANEL
- 802418 ADRR PROCESOR CONTROL PANEL
- 802419 ADRR SV FILTER CONTROL PANEL
- 802420 ADRR SV FILTER INSTRUMENT RACK
- 802421 ERIS BAC VACUUM
- 802422 HSS AND HOP PIPE TEST CABINET
- 802423 HOP PIPE TEST CABINET
- 802424 REVITE SHUTDOWN CS3 SP3S ELECTRONIC CABINET
- 802425 STANDBY DIESEL - SPEED CONTROL PANEL
- 802426 STANDBY DIESEL - SPEED CONTROL PANEL
- 802427 ADRR PROCESOR CONTROL PANEL
- 802428 ADRR SV FILTER CONTROL PANEL
- 802429 ADRR SV FILTER INSTRUMENT RACK
- 802430 ERIS BAC VACUUM
- 802431 HSS AND HOP PIPE TEST CABINET
- 802432 HOP PIPE TEST CABINET
- 802433 REVITE SHUTDOWN CS3 SP3S ELECTRONIC CABINET
- 802434 STANDBY DIESEL - SPEED CONTROL PANEL
- 802435 STANDBY DIESEL - SPEED CONTROL PANEL
- 802436 ADRR PROCESOR CONTROL PANEL
- 802437 ADRR SV FILTER CONTROL PANEL
-



Removed in Accordance with RIS 2015-17

PERRY NUCLEAR POWER PLANT  
10 CENTER RD., PERRY, OHIO 44081

FINAL PLANT LAYOUT,  
PLOT PLAN, PLANT AREA  
FIGURE 1.2-2  
(DWG. E-036-0022-00000)

Removed in Accordance with RIS 2015-17

PERRY NUCLEAR POWER PLANT  
10 CENTER RD., PERRY, OHIO 44081

FINAL PLANT LAYOUT, PLAN A ABOVE  
ELEVS. 568'-6", 574'-10", 577'-6"  
AND 580'-6", PLANT COMPLEX  
FIGURE 1.2-3  
(DWG. E-013-0003-00000)

Removed in Accordance with RIS 2015-17

PERRY NUCLEAR POWER PLANT  
10 CENTER RD., PERRY, OHIO 44081

FINAL PLANT LAYOUT, PLAN B ABOVE  
ELEVS. 593'-6", 599'-0", 600'-6",  
602'-6", AND 605'-6", PLANT COMPLEX  
FIGURE 1.2-4  
(DWG. E-013-0004-00000)

Removed in Accordance with RIS 2015-17

PERRY NUCLEAR POWER PLANT  
10 CENTER RD., PERRY, OHIO 44081

FINAL PLANT LAYOUT, PLAN C ABOVE  
ELEVS. 620'-6", 623'-6" AND  
624'-6", PLANT COMPLEX  
FIGURE 1.2-5  
(DWG. E-013-0005-00000)

FIGURE REDACTED PER RIS 2015-17

PERRY NUCLEAR POWER PLANT  
10 CENTER RD., PERRY, OHIO 44081

FINAL PLANT LAYOUT, PLAN D  
ABOVE ELEVS. 638'-6", 642'-0"  
AND 647'-6", PLANT COMPLEX  
FIGURE 1.2-6  
(DWG. E-013-0006-00000)



Removed in Accordance with RIS 2015-17

PERRY NUCLEAR POWER PLANT  
10 CENTER RD., PERRY, OHIO 44081

PLANT LAYOUT PLAN E ABOVE  
ELEVS. 652'-0" AND EL. 654'-6",  
PLANT COMPLEX  
FIGURE 1.2-7  
(DWG. E-013-0007-00000)

Removed in Accordance with RIS 2015-17

PERRY NUCLEAR POWER PLANT  
10 CENTER RD., PERRY, OHIO 44081

FINAL PLANT LAYOUT, PLAN F ABOVE  
ELEVS. 664'-7", 665'-0", AND  
670'-6", PLANT COMPLEX  
FIGURE 1.2-8  
(DWG. E-013-0008-00000)

Removed in Accordance with RIS 2015-17

PERRY NUCLEAR POWER PLANT  
10 CENTER RD., PERRY, OHIO 44081

FINAL PLANT LAYOUT, PLAN G ABOVE  
ELEVS. 689'-6", PLANT COMPLEX  
FIGURE 1.2-9  
(DWG. E-013-0009-00000)

Removed in Accordance with RIS 2015-17

PERRY NUCLEAR POWER PLANT  
10 CENTER RD., PERRY, OHIO 44081

FINAL PLANT LAYOUT,  
PLAN H ROOF PLAN  
FIGURE 1.2-10  
(DWG. E-013-0010-00000)

Removed in Accordance with RIS 2015-17

PERRY NUCLEAR POWER PLANT  
10 CENTER RD., PERRY, OHIO 44081

FINAL PLANT LAYOUT,  
SECTION A-A  
FIGURE 1.2-11  
(DWG. E-013-0011-00000)

Removed in Accordance with RIS 2015-17

PERRY NUCLEAR POWER PLANT  
10 CENTER RD., PERRY, OHIO 44081

FINAL PLANT LAYOUT,  
SECTION B-B  
FIGURE 1.2-12  
(DWG. E-013-0012-00000)

Removed in Accordance with RIS 2015-17

PERRY NUCLEAR POWER PLANT  
10 CENTER RD., PERRY, OHIO 44081

FINAL PLANT LAYOUT,  
SECTION C-C  
FIGURE 1.2-13  
(DWG. E-013-0013-00000)

Removed in Accordance with RIS 2015-17

PERRY NUCLEAR POWER PLANT  
10 CENTER RD., PERRY, OHIO 44081

FINAL PLANT LAYOUT, CIRCULATING  
WATER PUMPHOUSE, PLANS AND ELEVATIONS  
FIGURE 1.2-14 (SHEET 1 OF 2)  
(DWG. E-015-0016-00000)



Removed in Accordance with RIS 2015-17

PERRY NUCLEAR POWER PLANT  
10 CENTER RD., PERRY, OHIO 44081

FINAL PLANT LAYOUT, CIRCULATING  
WATER PUMPHOUSE, PLANS AND ELEVATIONS  
FIGURE 1.2-14 (SHEET 2 OF 2)  
(DWG. E-015-0017-00000)

Removed in Accordance with RIS 2015-17

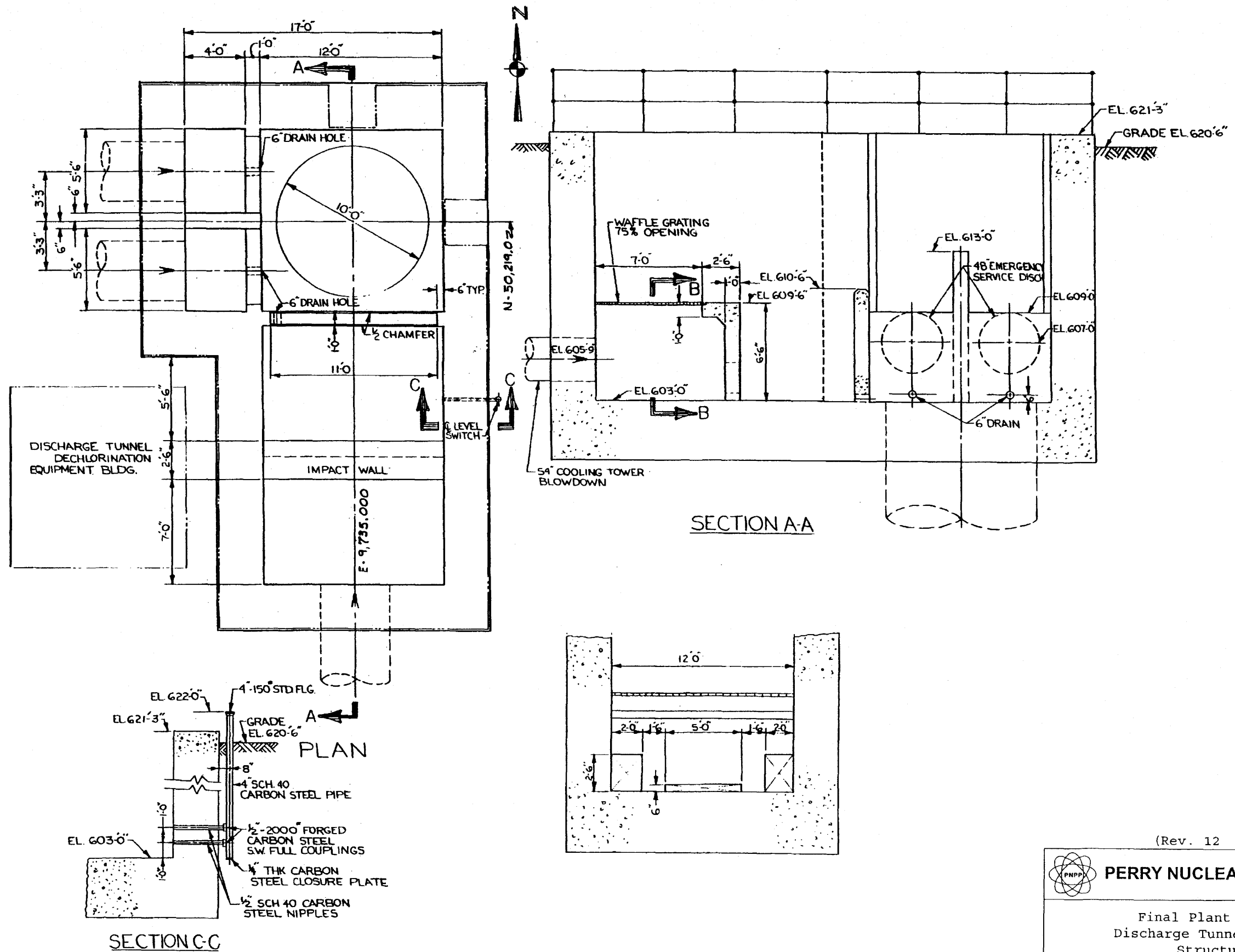
PERRY NUCLEAR POWER PLANT  
10 CENTER RD., PERRY, OHIO 44081

FINAL PLANT LAYOUT,  
SERVICE WATER PUMPHOUSE  
FIGURE 1.2-15  
(DWG. E-015-0015-00000)

Removed in Accordance with RIS 2015-17

PERRY NUCLEAR POWER PLANT  
10 CENTER RD., PERRY, OHIO 44081

FINAL PLANT LAYOUT,  
EMERGENCY SERVICE WATER  
PUMPHOUSE PLANS AND ELEVATIONS  
FIGURE 1.2-16  
(DWG. E-015-0002-00000)

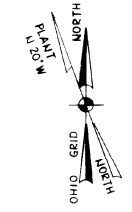
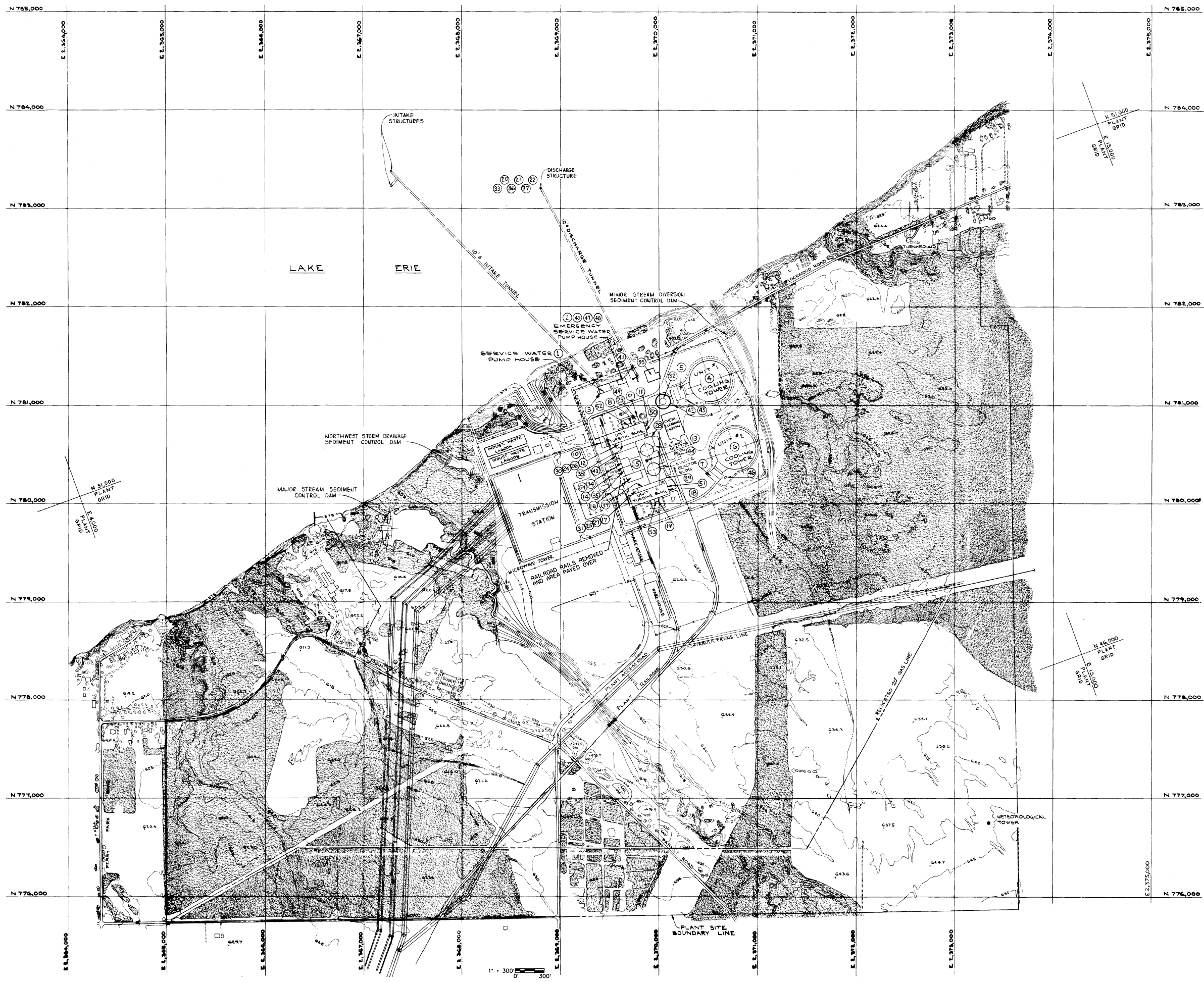


(Rev. 12 1/03)

**PERRY NUCLEAR POWER PLANT**

Final Plant Layout,  
 Discharge Tunnel Entrance  
 Structures

Figure 1.2-17  
 (Dwg. B-015-003)



ITEM NO.	DESCRIPTION	RELEASE ELEVATION
1.	CONSTRUCTION SANITARY SEWAGE EFFLUENT	570'-0"
2.	EMERGENCY SERVICE WATER PUMP HOUSE VENT. EXHAUST	630'-0"
3.	SERVICE WATER PUMP HOUSE VENT. EXHAUST	620'-0"
4.	COOLING TOWER AIR OUTLET - UNIT 1	1130'-0"
5.	CIRCULATING WATER PUMP HOUSE VENT. EXHAUST - UNIT 1	880'-0"
6.	COOLING TOWER AIR OUTLET - UNIT 2	1130'-0"
7.	CIRCULATING WATER PUMP HOUSE VENT. EXHAUST - UNIT 2	880'-0"
8.	TURBINE BUILDING AND HEATER BAY EXHAUST - UNIT 1	722'-0"
9.	AUXILIARY BOILER BUILDING VENT. EXHAUST	847'-0"
10.	WATER TREATMENT BUILDING VENT. EXHAUST	843'-0" & 880'-0"
11.	LUBE OIL STORAGE AREA VENT. EXHAUST - UNIT 1	630'-0"
12.	OFF-GAS AND TURBINE BUILDINGS VENT EXHAUST - UNIT 1	723'-0"
13.	PLANT VENT. - UNIT 1 AND UNIT 2	753'-0"
14.	DIESEL GENERATORS BUILDING VENT. EXHAUST	638'-11"
15.	CONTROL COMPLEX VENT. EXHAUST	637'-4"
16.	SERVICE BUILDING VENT. EXHAUST	671'-5"
17.	OFF-GAS AND TURBINE BUILDINGS VENT EXHAUST - UNIT 2	723'-0"
18.	LUBE OIL STORAGE AREA VENT. EXHAUST - UNIT 2	630'-0"
19.	TURBINE BUILDING AND HEATER BAY EXHAUST - UNIT 2	722'-0"
20.	COOLING TOWER BLOWDOWN	554'-4"
21.	SERVICE WATER DISCHARGE	554'-4"
22.	EMERGENCY SERVICE WATER DISCHARGE	554'-4"
23.	AUXILIARY BOILER FLUE GAS VENT. EXHAUST (2)	721'-0"
24.	START-UP CONDENSER EVACUATION EXHAUST - UNIT 1	723'-0"
25.	START-UP CONDENSER EVACUATION EXHAUST - UNIT 2	723'-0"
26.	OFF-GAS RELEASE - UNIT 1	723'-0"
27.	OFF-GAS RELEASE - UNIT 2	723'-0"
28.	EMERGENCY SERVICE WATER OVERFLOW - UNIT 1	623'-0"
29.	EMERGENCY SERVICE WATER OVERFLOW - UNIT 2	623'-0"
30.	STEAM PACKING EXHAUST DISCHARGE - UNIT 1	723'-0"
31.	STEAM PACKING EXHAUST DISCHARGE - UNIT 2	723'-0"
32.	FUEL OIL STORAGE TANK VENT	180'-0"
33.	LIQUID RADWASTE DISCHARGE	554'-4"
34.	EMERGENCY DIESEL GENERATOR FUEL OIL TANK VENTS (12)	650'-0" & 643'-0"
35.	EMERGENCY DIESEL GENERATORS COMBUSTION EXHAUST GASES (8)	650'-0"
36.	CHEMICAL CLEANING TREATED WASTE	554'-4"
37.	SANITARY SEWAGE EFFLUENT	554'-4"
38.	TURBINE POWER COMPLEX BATTERY ROOM EXHAUST - UNIT 1	657'-4"
39.	TURBINE POWER COMPLEX BATTERY ROOM EXHAUST - UNIT 2	657'-4"
40.	DIESEL DRIVEN FIRE PUMP AREA EXHAUST	620'-0"
41.	DISCHARGE TUNNEL DECONTAMINATION EQUIPMENT BUILDING EXHAUST	634'-2"
42.	FUEL OIL PUMP HOUSE VENT. EXHAUST	637'-4"
43.	RADWASTE BUILDING CEMENT STORAGE AREA VENT. EXHAUST	656'-0"
44.	HYPOCHLORITE GENERATION BUILDING AREA VENT. EXHAUST	634'-2"
45.	COOLING TOWER ACID ADDITION STORAGE BUILDING VENT. EXHAUST - UNIT 1	630'-0"
46.	COOLING TOWER ACID ADDITION STORAGE BUILDING VENT. EXHAUST - UNIT 2	630'-0"
47.	DIESEL DRIVEN FIRE PUMP ENGINE EXHAUST	628'-0"
48.	DIESEL DRIVEN FIRE PUMP FUEL OIL TANK VENT	635'-0"
49.	AUXILIARY BOILER SAFETY VALVE ESCAPES, AUXILIARY BOILER GENERATING HEATER ESCAPE AND VENT AND AUXILIARY BOILER BLOWDOWN TANK VENT	650'-0"
50.	MAIN TURBINE LUBE OIL RESERVOIR VENT - UNIT 1	1181'-0"
51.	MAIN TURBINE LUBE OIL RESERVOIR VENT - UNIT 2	1181'-0"
52.	MAIN FEEDWATER PUMP TURBINE OIL RESERVOIR VENT - UNIT 1 (2)	683'-11"
53.	MAIN FEEDWATER PUMP TURBINE OIL RESERVOIR VENT - UNIT 2 (2)	683'-11"
54.	EMERGENCY DIESEL GENERATOR LUBE OIL SUMP AND CRANKCASE VENTS(8)	650'-0"
55.	LOW LEVEL RADWASTE STORAGE AND PROCESSING FACILITY VENT EXHAUST	650'-0"

NOTES: 1. COORDINATES SHOWN ON THIS DRAWING ARE BASED ON THE OHIO STATE COORDINATE SYSTEM.  
 2. REACTOR COORDINATES:  

	OHIO GRID	PLANT GRID
UNIT 1	N780,545 E2,389,875	N49,466 E9,570
UNIT 2	N780,346,735 E2,389,847,166	N49,255 E9,570

 3. ALL BACKGROUND CONTOURS SUPPLIED BY AERIAL SURVEYS, INC.

(REV. 21 10/2019)

**PERRY NUCLEAR POWER PLANT**  
 10 CENTER RD., PERRY, OHIO 44081

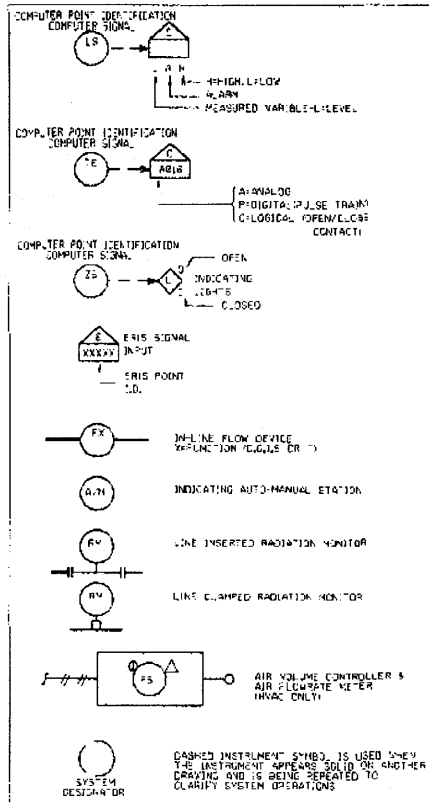
FINAL PLANT LAYOUT,  
 PLOT PLAN RELEASE POINT DESIGNATION  
 FIGURE 1.2-18  
 (DWG. D-036-0011-00000)



INSTRUMENTATION

Table with 2 columns: Instrumentation description and symbol. Includes symbols for alpha-numeric designation, basic instrument, local rack or panel mounted identification, central room panel mounted identification, station identification, and high/low alarm indicator.

ALARM CRT IDENTIFICATION



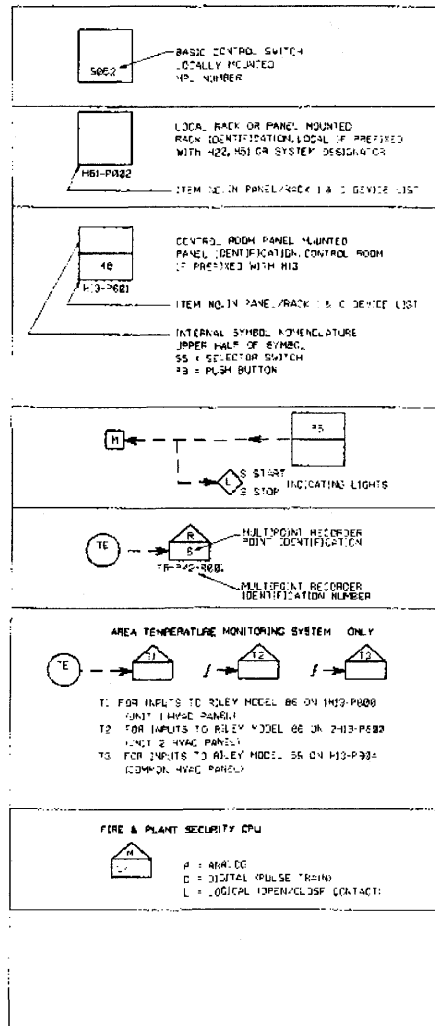
INSTRUMENT IDENTIFICATION LETTERS

Table mapping instrument identification letters (1st and 2nd letters) to their respective functions, such as A for analysis, B for bistable, and C for controller.

FUNCTION DESIGNATORS

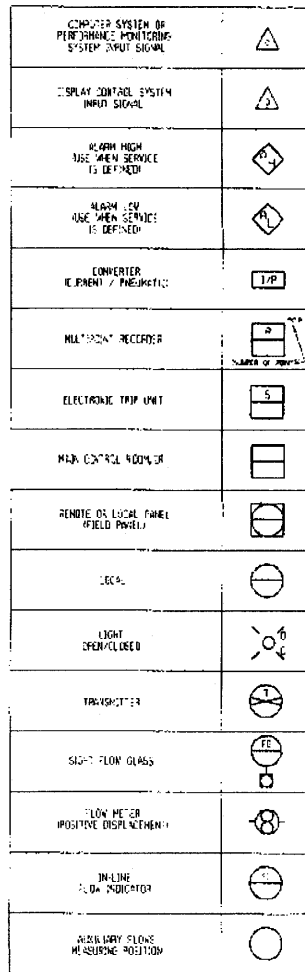
Table mapping function designators (A-Z) to their respective functions, such as E for electro-pneumatic converter, R for resistance-to-current converter, and S for square root extractor.

CONTROL SWITCHES



Large table mapping instrument functions to GE symbols. Columns include Instrument Function, Second and Third Letters, and Measurement. Rows include variables like Air, Conductivity, Density, Flow, Level, Pressure, etc.

INSTRUMENTS



MISCELLANEOUS ABBREVIATIONS

Table mapping miscellaneous abbreviations (A-Z) to their respective meanings, such as A for automatic depressurization, B for air supply, and C for control room drive.

NOTES

- List of four notes providing additional context and instructions for using the symbols, such as 'Symbols are not to be used unless they are completely defined and identified'.

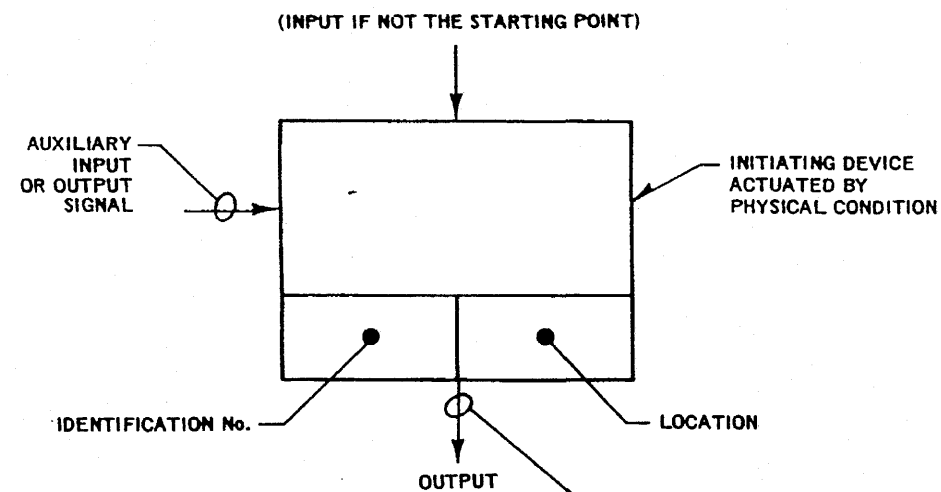
(Rev. 14 10/05)



System Diagram Symbols

Figure 1.2-20

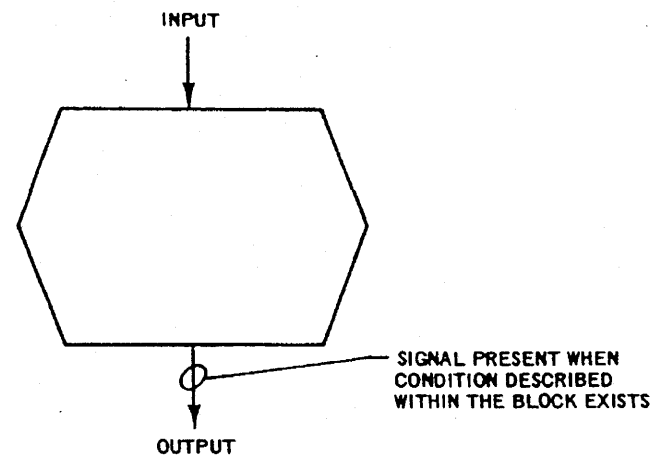
(Dwg. D-302-002)



**COMMAND BLOCK**

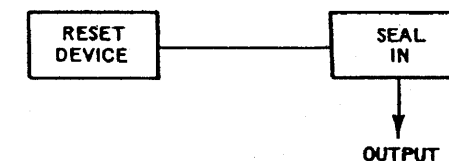
THIS BLOCK CAN REPRESENT A SWITCH, VALVE, PROBE, TIMER OR TRIP CIRCUIT. IT IS NORMALLY THE STARTING POINT OF A FUNCTIONAL SEQUENCE WITH AN OUTPUT ONLY, BUT CAN HAVE INPUT AND AUX. INPUT DEPENDING ON THE TYPE OF DEVICE. THE SAME DEVICE MAY HAVE A NUMBER OF OUTPUTS, BUT EACH FUNCTIONAL SEQUENCE INITIATED SHALL BE SHOWN BY AN INDIVIDUAL BLOCK SHOWING THE SAME IDENTIFICATION NUMBER

SIGNAL IS PRESENT WHEN CONDITION IS DESCRIBED WITHIN THE BLOCK EXISTS



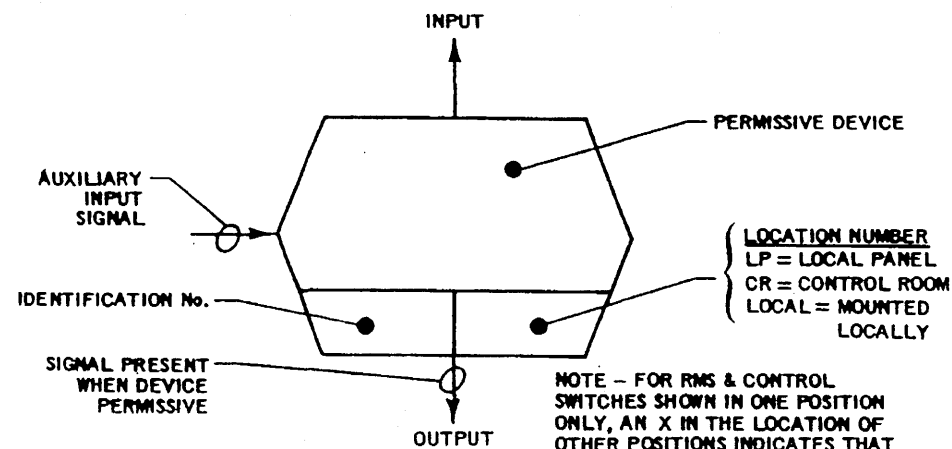
**PERMISSIVE E CONDITION BLOCK**

WHERE THE PERMISSIVE IS A GENERAL CONDITION AND NOT IDENTIFIED WITH A SINGLE DEVICE THE OUTPUTS ENCLOSURE ONLY IS SHOWN.



**SEAL-IN BLOCK**

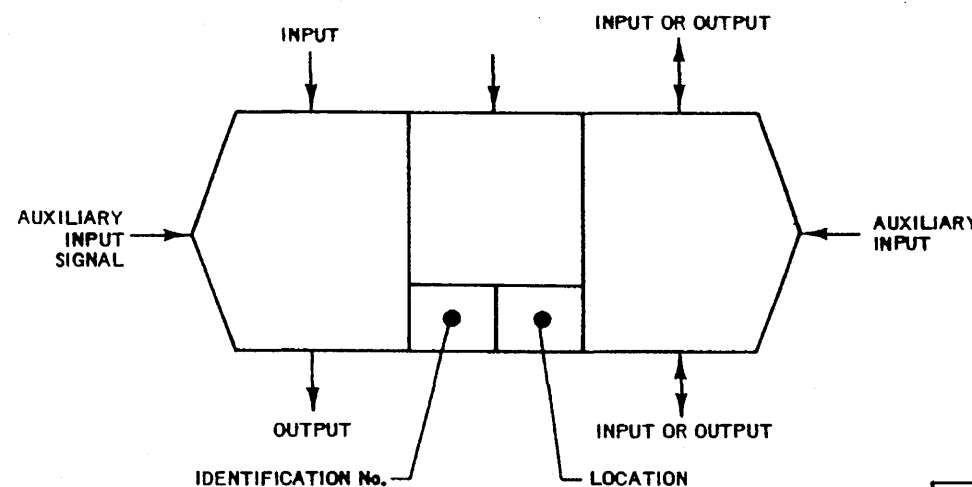
A SEAL-IN OR LATCHING BLOCK'S FUNCTION IS TO MAINTAIN AN INPUT SIGNAL TO A DEVICE ONCE THE DEVICE HAS BEEN ACTUATED. RESETTING OR INHIBITING A SEAL-IN MAY BE EITHER EXPRESSED OR IMPLIED. IF IMPLIED, THE SEAL-IN WILL BE RESET OR INHIBITED BY INTERRUPTING THE SIGNAL TO THE DEVICE DOWNSTREAM FROM THE POINT WHERE SEAL-IN IS INDICATED. A SEAL-IN SHOWN WITHOUT A RESET DEVICE IMPLIES THAT THE RESET DEVICE IS PART OF, AND LOCATED ON THE NEAREST VALVE OR CONTACTOR. IN ALL OTHER CASES THE RESET DEVICE SHALL BE SHOWN IN CONJUNCTION WITH THE SEAL-IN.



**PERMISSIVE DEVICE BLOCK**

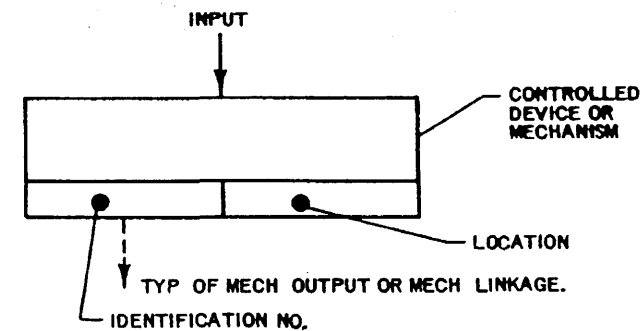
THIS BLOCK DEFINES A PERMISSIVE FUNCTION WHICH MUST BE SATISFIED TO PERMIT THE SIGNAL FLOW TO PASS TO THE NEXT BLOCK. THIS BLOCK HAS INCOMING, OUTGOING AND MAY HAVE AUXILIARY SIGNALS. THE OUTPUT FROM THIS PERMISSIVE MAY BE SEALED IN

NOTE - FOR RMS & CONTROL SWITCHES SHOWN IN ONE POSITION ONLY, AN X IN THE LOCATION OF OTHER POSITIONS INDICATES THAT THEIR BLOCKS ARE AN INTRICATE PART OF THE NUMBERED SWITCH ASSEMBLY, BUT A DIFFERENT POSITION OF THE SWITCH HANDLE



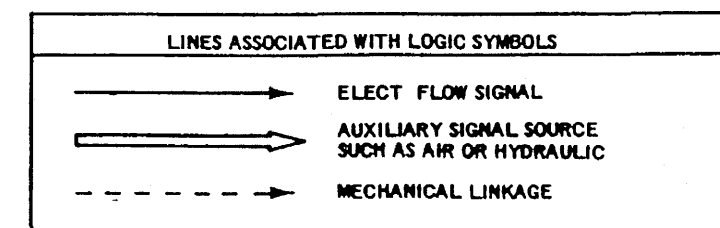
**PERMISSIVE OPERATED BY OTHER DEVICES BLOCK**

THIS BLOCK IS A PERMISSIVE OPERATED BY DEVICES SUCH AS VALVE OR PUMP SWITCHGEAR DESIGNATED IN THE INNER BLOCK. THIS COND OR DEVICE EFFECTS THE OPERATION OF THE FINAL DEVICE. IT HAS ELECT INPUTS, MECH INPUTS, AUX INPUTS (MECH OR ELEC) AND MECH OR ELECT OUTPUTS. THIS DEVICE IS NORMALLY A VALVE. THIS IS ALSO USED FOR OTHER INPUT/OUTPUT POWER SOURCES SUCH AS AIR OR HYDRAULIC. A SOLENOID PILOT VALVE FOR AN AIR OPERATED VALVE IS AN EXAMPLE OF THIS TYPE DEVICE.

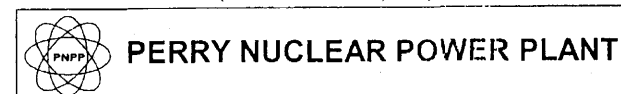


**FINAL DEVICE BLOCK**

THIS BLOCK CAN BE A RELAY, VALVE, ELECTRO-MECH SW. ETC. NORMALLY IT HAS ONLY INPUTS, BUT CAN HAVE MECH OUTPUTS OR POSITION SWITCH OUTPUTS.



(Rev. 12 1/03)



NSSS (GE) Logic Symbols Used on Functional Control Diagrams

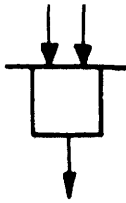
Figure 1.2-21





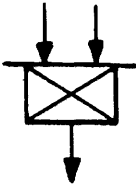
**SYMBOL**

**FUNCTION**



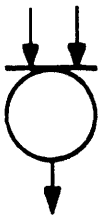
**AND:**

A FUNCTION WHICH PRODUCES AN OUTPUT ONLY WHEN EVERY INPUT EXISTS.



**NOT:**

A FUNCTION WHICH PRODUCES AN OUTPUT IF ANY OF THE INPUTS DOES NOT EXIST.



**OR:**

A FUNCTION WHICH PRODUCES AN OUTPUT IF ANY ONE OF ITS INPUTS EXIST.



**TIME DELAY**

A FUNCTION WHICH PRODUCES AN OUTPUT FOLLOWING A TIME DELAY AFTER RECEIVING AN INPUT.



**ADJUSTABLE TIME DELAY**

A FUNCTION WHOSE OUTPUT IS DE-ENERGIZED FOLLOWING A TIME DELAY AFTER ITS INPUT IS DE-ENERGIZED.



**LOGIC INFORMATION TRANSMISSION**



**ANALOG INFORMATION TRANSMISSION**

(Rev. 12 1/03)

**LOGIC SYMBOLS**



**PERRY NUCLEAR POWER PLANT**

AE (GAI) Logic Symbols Used on Functional Diagrams

Figure 1.2-23