

License Renewal Inspections and AMID

Roger Maggi, Orano TN VP Aging Management Programs

September 18, 2019

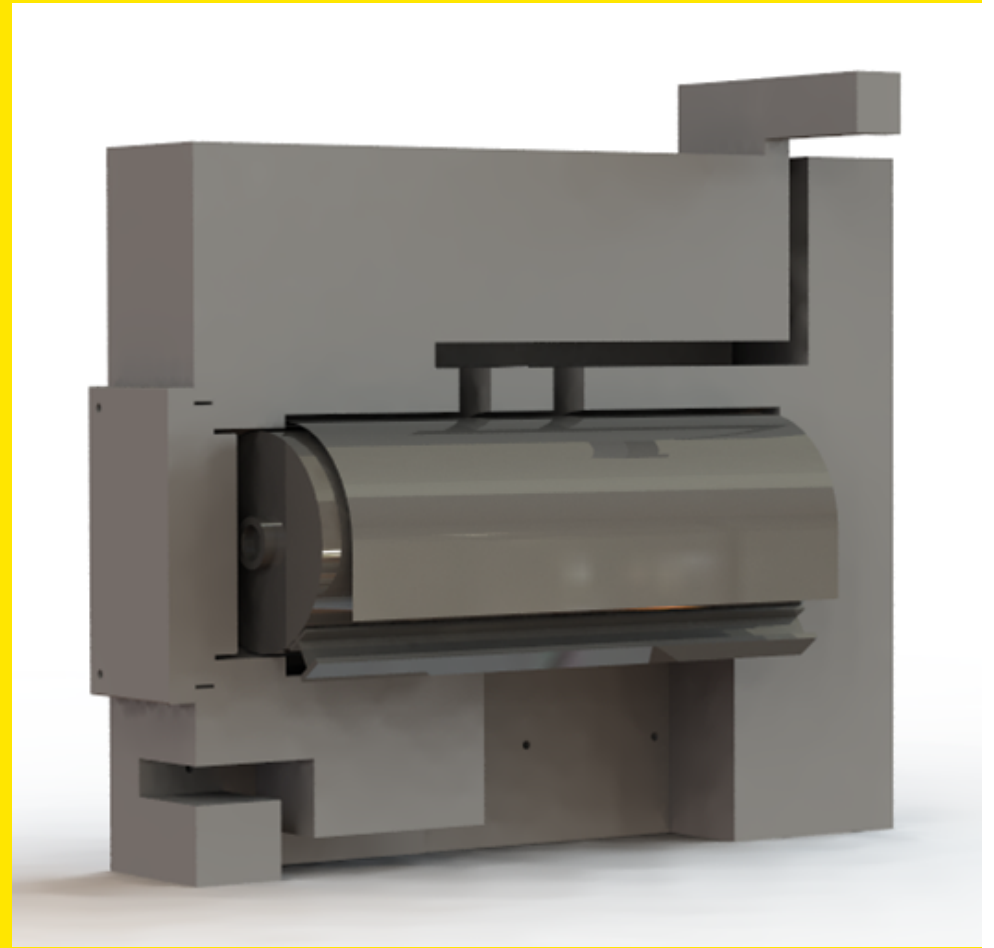
Orano TN Confidential and Proprietary



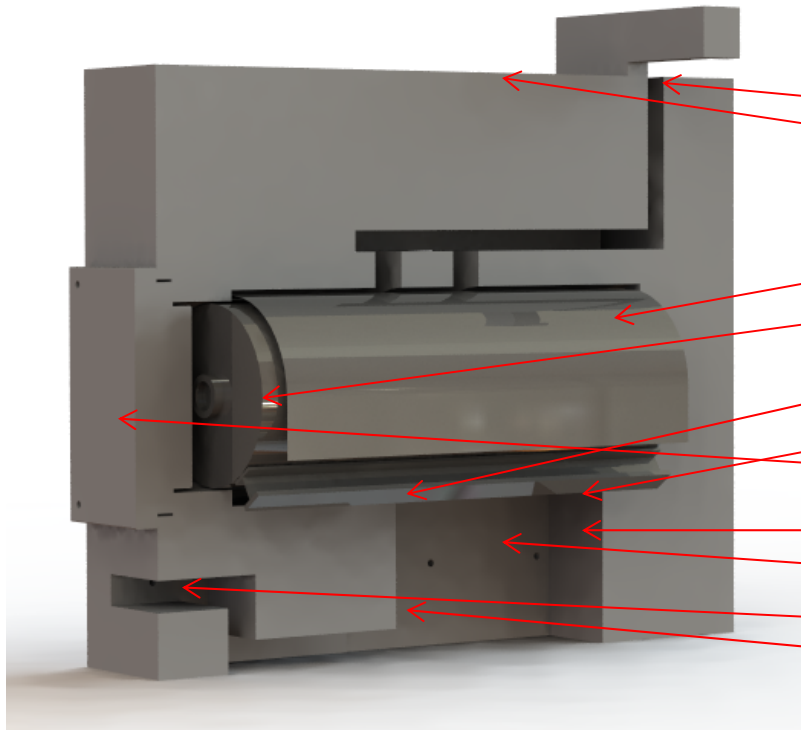
orano

01

AMP Inspection Requirements



AMP Inspection Requirements



Component Description

- Upper Vent
- Roof
- Heat Shield
- Canister
- Canister Rails
- DSC Support Structure
- Door
- Rear Wall
- Side Walls
- Lower vent
- Intermediate wall

AMP Inspection Requirements

DSC External Surfaces Aging Management Program

Acceptance Criteria VT-3:

No indication of pitting, rust, discoloration, or any indication of surface degradation.

Acceptance Criteria VT-1:

No indications of pitting or crevice corrosion

No indications of galvanic corrosion on the surface area contacting graphite lubricant

No indications of stress corrosion cracking

No indications of corrosion products near crevices

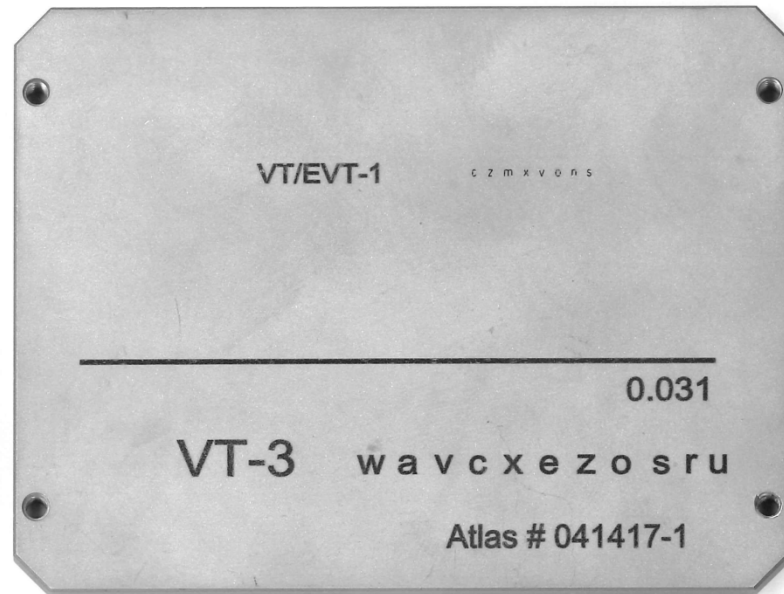
No indications of corrosion products on or adjacent to confinement boundary welds.

Corrective Actions:

Deficiencies are either corrected, or are evaluated as acceptable for continued service through engineering analysis. Extent of condition investigation per the licensee's corrective action program may trigger additional inspections via a different method, increased inspection frequency and/or expanded inspection sample size.

Qualified Visual Exams

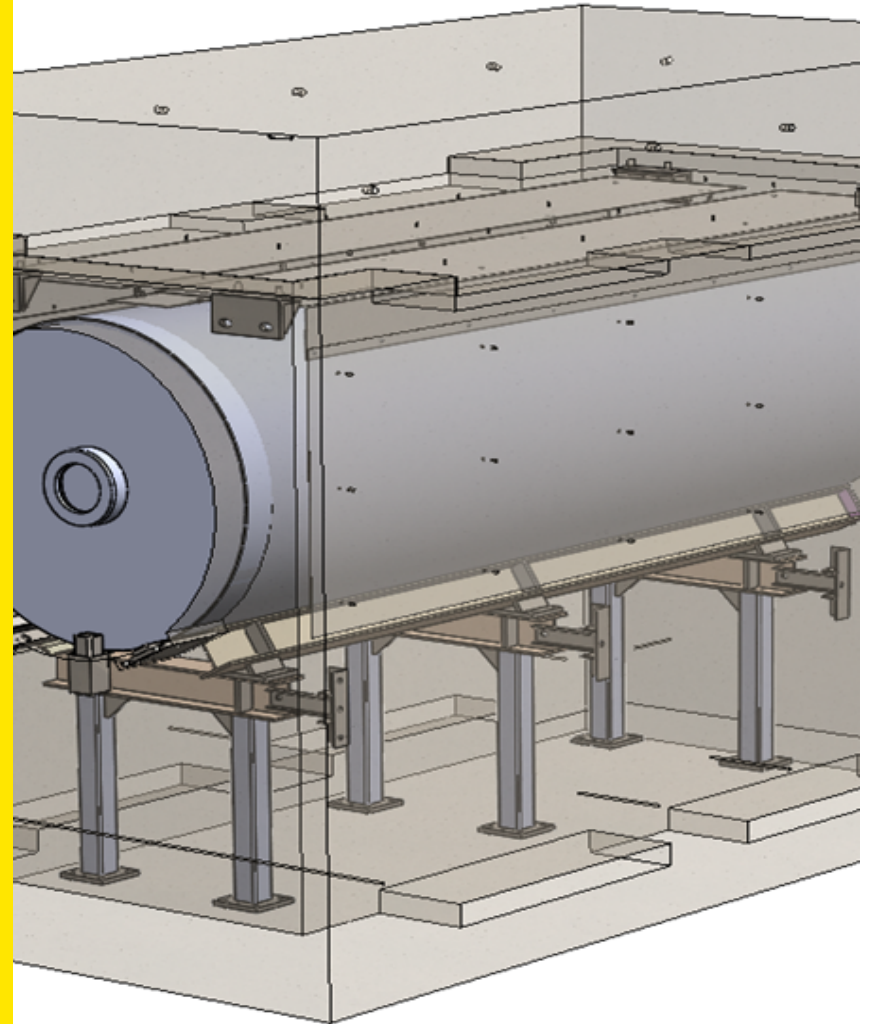
Visual examinations follow procedures consistent with the American Society of Mechanical Engineers (ASME) Boiler and Pressure Vessel (B&PV) Code, Section XI [5], Sub-article IWA-2210



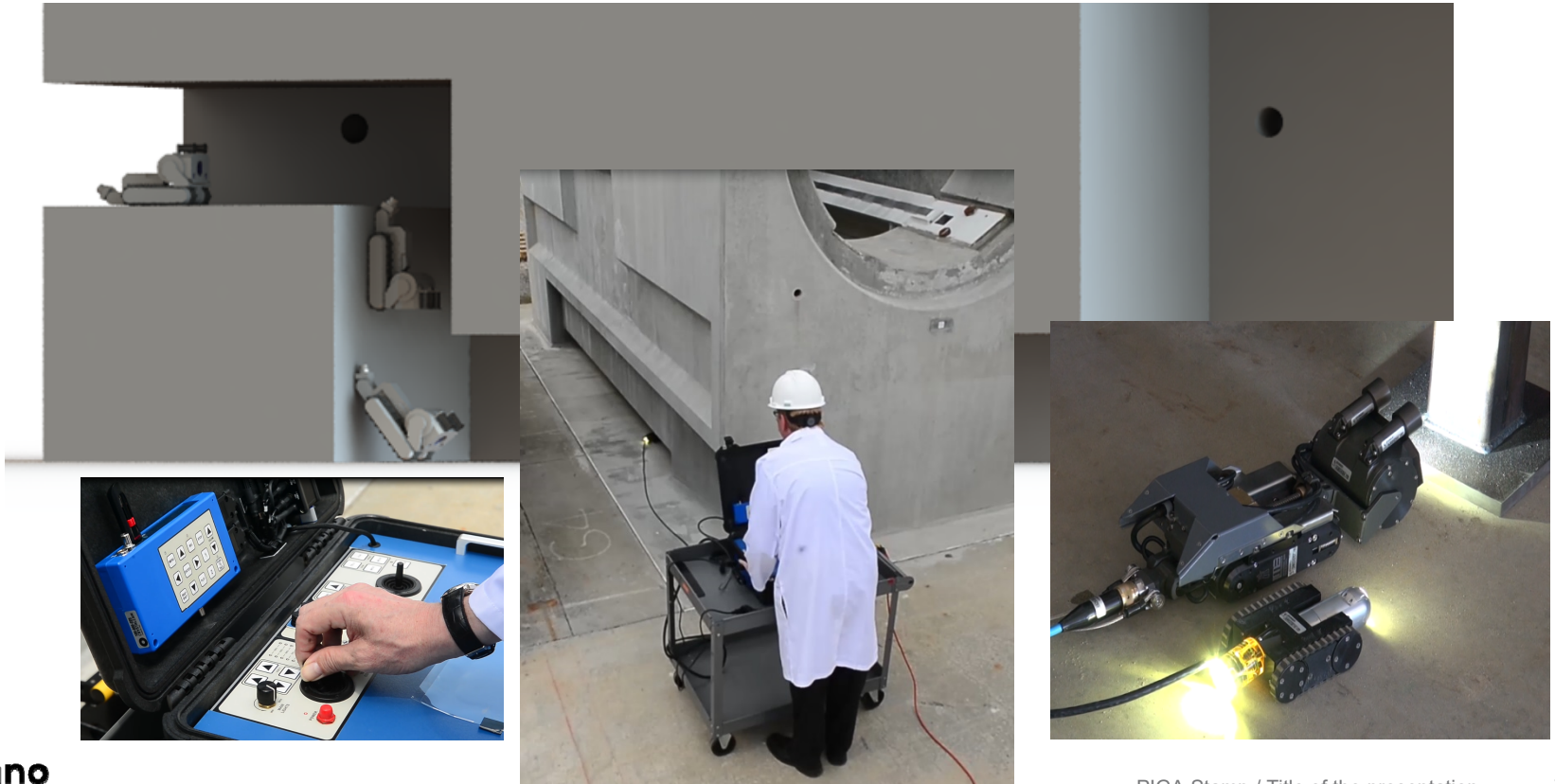
It is Critical that we are able to complete a high percentage of the visual exams allowing for the full evaluation of the target canister (s)

02

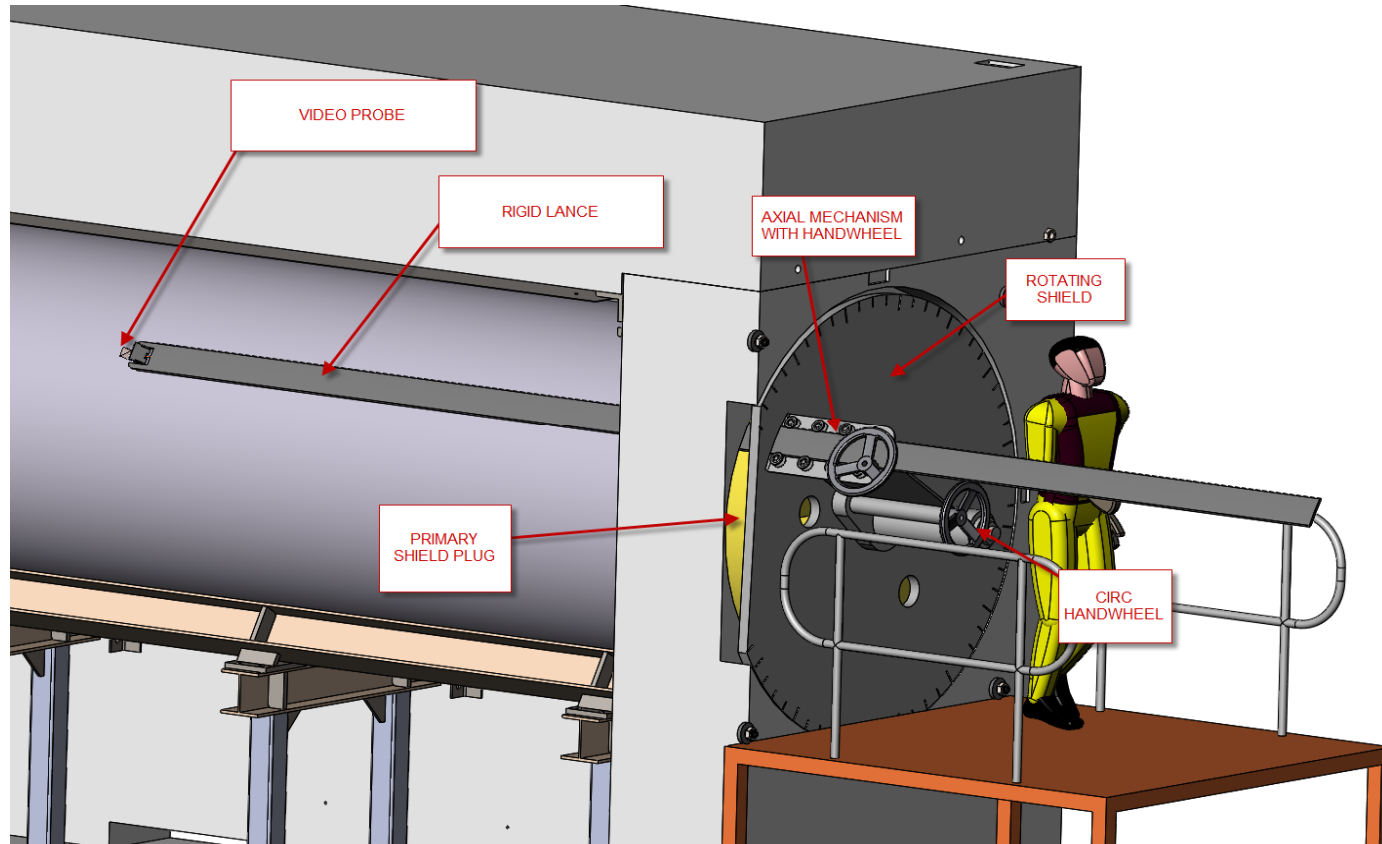
How do we get there?



General Area Crawlers



Qualified Visual Exams



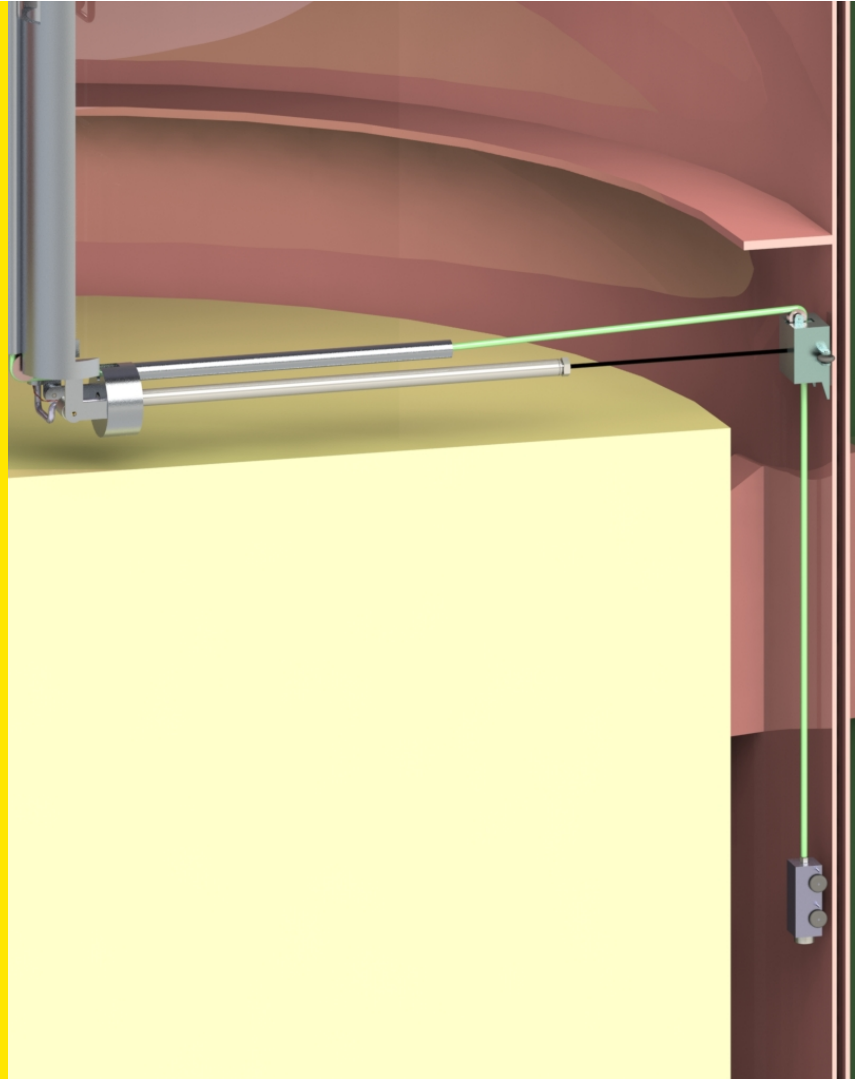
Tooling Development Goals



- **ALARA**
- **Cost effective**
- **Tooling should fit as many designs as possible thru modeling and realistic mockups**
- **Design input from inspectors**
- **Qualify techniques and procedures with performance demonstrations**
- **Factor in the video and image capture for timely reporting and resolution of findings**
- **Consistent and repeatable exams to develop the basis for acceptance of Surrogate Exams**

03

**What do we do with all
of that data?**



Learning Aging Management Toll Gates

- Commitment to periodic, documented safety assessments
- See NEI 14-03, Section 3.6.5 and NUREG-1927, Section 3.6.1.10
- Assessment timing specified after renewed operating period begins determined by the specific/licensee or CoC holder
- Integrates OE, research, monitoring, and inspection results and assesses the aggregate impact (e.g. applies CISCC susceptibility criteria & HBU R&D results)
- If confirmatory, proceed to next toll gate (no action)
- If not, pre-plan for possible outcomes –e.g., implement corrective actions, if needed, under licensee’s corrective action program

Where Can I Find the OE? AMID

- AMID is a database tool that enables Licensees and CoC holders to access aggregated information to assess the effectiveness of their ISFSI AMPs
- NEI 14-03 points to AMID in the Tollgate process as a means of executing Learning Aging Management Programs
- Orano TN, NAC and Holtec “own” AMID and approve material for inclusion in the database to ensure that IP is not compromised
- Inspection results are not screened out as that data is owned by the utility
- AMID is administered by Certrec but rights to access are controlled by the owners
- AMID is not a repository for non-aging related ISFSI OE i.e. loading campaign OE
- AMID provides reasonable assurance that tollgate assessments are being performed using valid data

How Does AMID Function?

- AMID provides a single collection point for aging-related information that reduces the burden of each licensee searching for such information separately
- AMID is searchable by storage technology, component, and other useful categories to hone in on the information relevant to your ISFSI
- AMID includes results of inspection findings, including no degradation, that help inform what changes may be appropriate for AMPs

How Does AMID Function?

ISFSI Aging Management INPO Database **INPO**

Welcome, Brian Gutherman Tuesday, April 17, 2018

Home **AMID** Logout

ISFSI AMID New Item Printer Friendly

ISFSI AMID Filters

Storage Technology:

Affected System, Structure, or Component:

Environment:

Material:

Aging Effect:

Aging Mechanism:

Description:

Change View:

Document Search:

ISFSI AMID Data

Storage Technology	Affected System, Structure, or Component	Environment	Material	Aging Effect	Aging Mechanism	Description	Options
Holtec-Transtor Hybrid	Storage Overpack/Module	Sheltered	Carbon Steel Reinforced Concrete	Cracking Peeling Pitting Loss of Material	General Corrosion	This was a videoscope inspection of the overpack interior, which also included an opportunistic inspection of the MPC exterior. This inspection is conducted by state regulation on a five year interval. This was the first inspection following completion of fuel loading in 2003. ...	

Making AMID Effective for All

- Add as many relevant records as possible
- Be as specific as possible in entering record data
- Provide feedback to the CoC holder for improvements in AMID functionality
- Set up a process for timely record entry into AMID after inspections that will endure, irrespective of organizational changes
- Add a step to your site procedures
- Enter records that are relevant even if not associated with your ISFSI (e.g., research reports)



orano

Giving nuclear energy its full value