



Northern Indiana Public Service Company

Nuclear Staff
RR # 3, Box 501
Chesterton, IN 46304
September 21, 1979

BAILLY GENERATING STATION N-1

Mr. Ronald Ballard
Environmental Projects Branch No. 1
Directorate of Licensing
U. S. Nuclear Regulatory Commission
Washington, D.C. 20545

RE: NORTHERN INDIANA PUBLIC SERVICE COMPANY
BAILLY GENERATING STATION NUCLEAR 1
DOCKET 50-367

Dear Mr. Ballard:

Enclosed herewith are ten (10) copies of the following:

1. Well Charts for 9/5/79 - 9/12/79
2. Bailly Wells Without Recorders for 9/12/79
3. Pond Levels for 9/12/79
4. Pneumatic Pressure Transducers for 9/12/79
5. Water Meter Readings for 9/12/79

Sincerely,

R. J. Bohn
Manager, Nuclear Staff

okph
DBY:lu

Enclosures

File: Ground Water Observation Monitoring Wells

*Doody
DES-11*

1018 130

7909250513 R

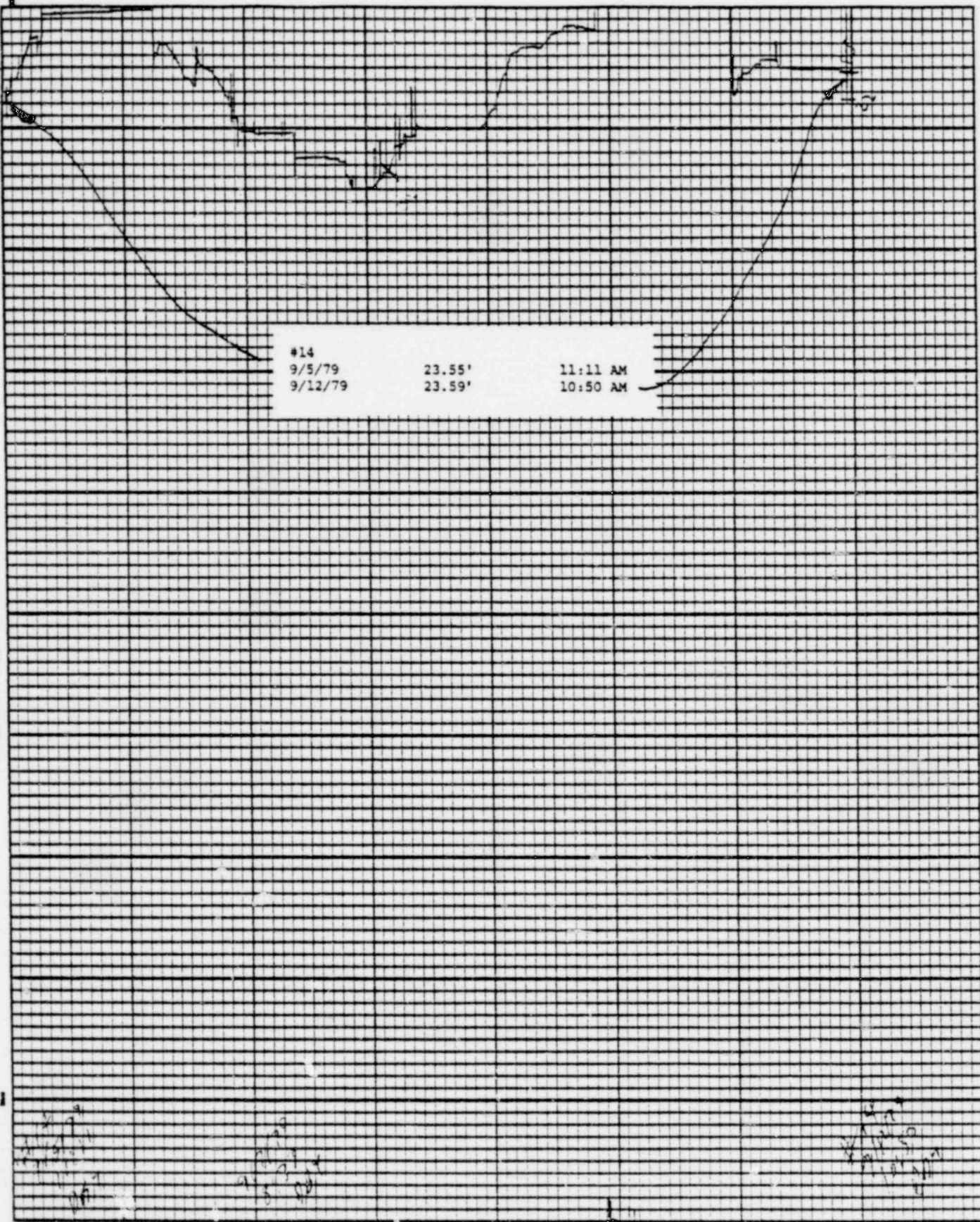
Printed in U.S.A.

Leupold & Stevens, Inc., Beaverton, Ore.

Chart F-1



Stevens Water Level Recorder — Type F

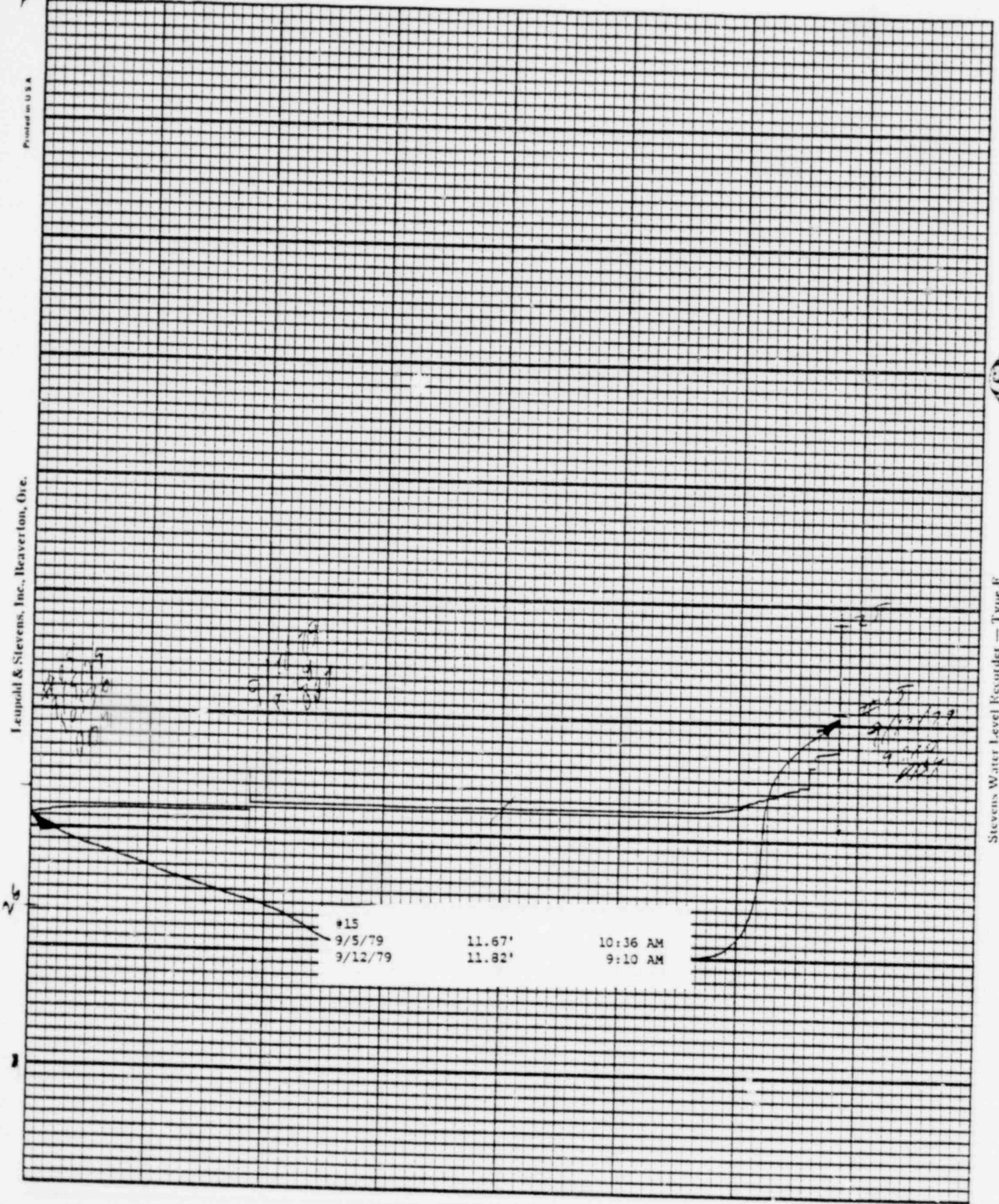


POOR ORIGINAL

1018 131

Leupold & Stevens, Inc., Beaverton, Ore.

Stevens Water Level Recorder — Type F



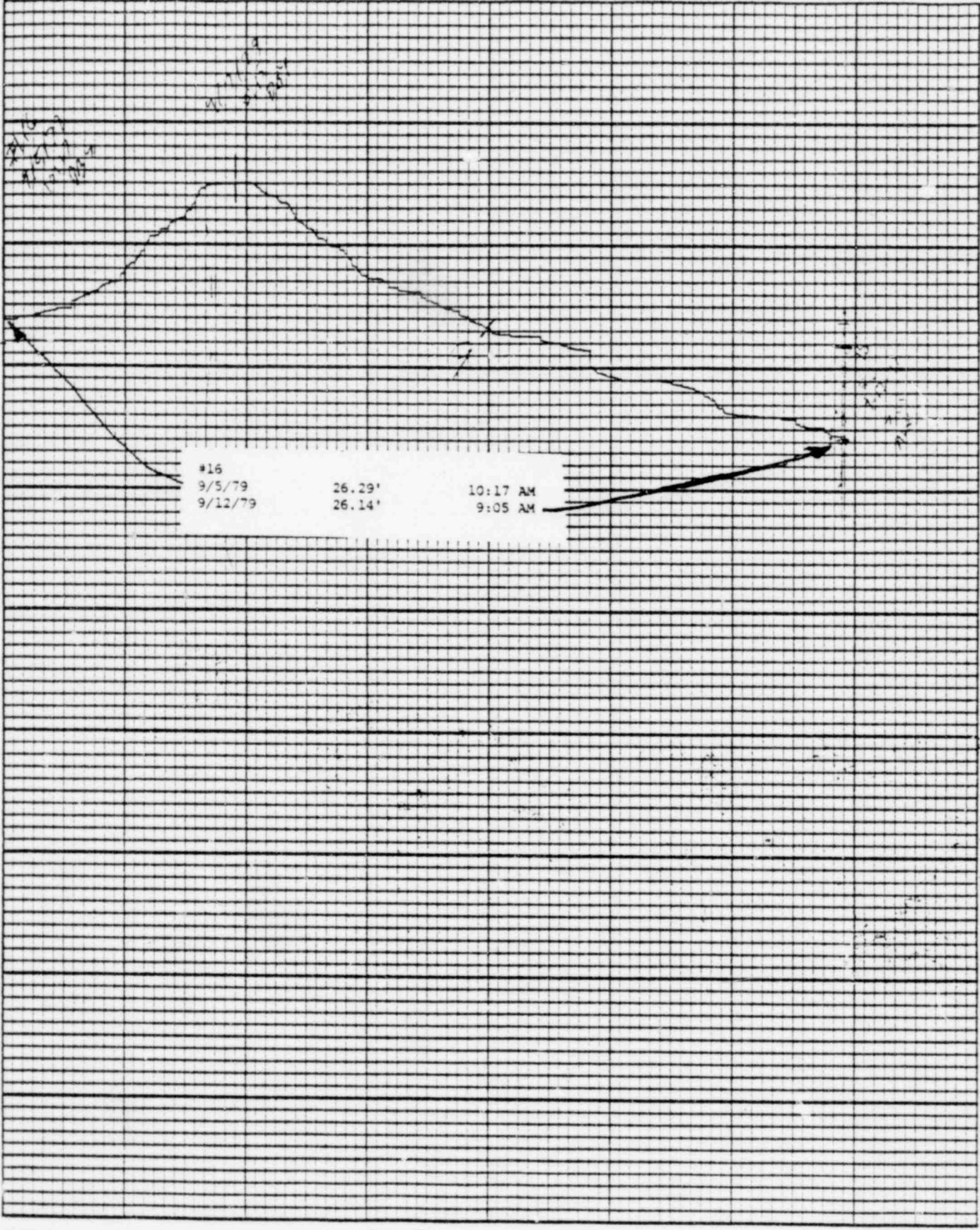
POOR ORIGINAL

1018 132

Printed in U.S.A.

Leupold & Stevens, Inc., Beaverton, Ore.

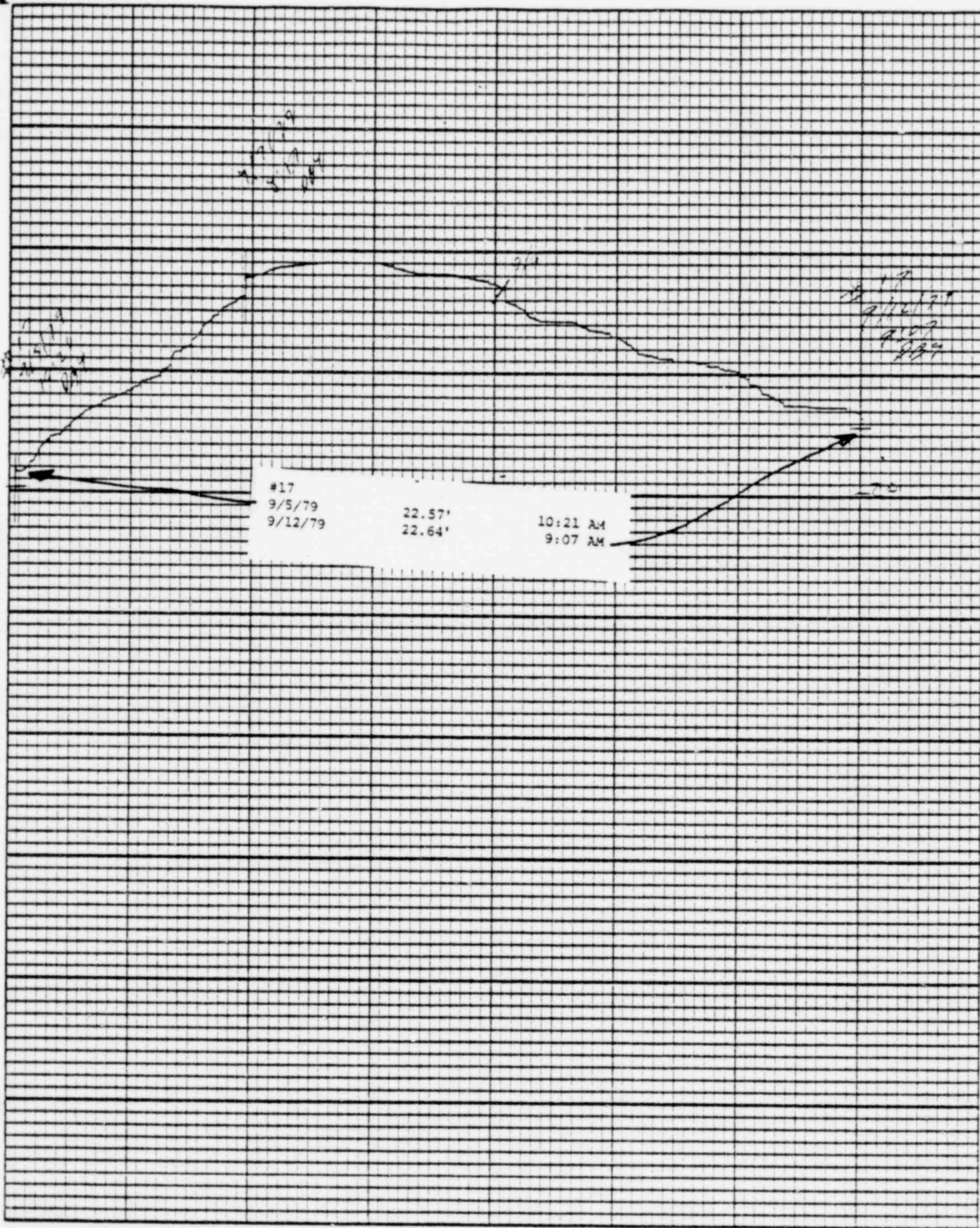
Chart F-1



Stevens Water Level Recorder - Type F

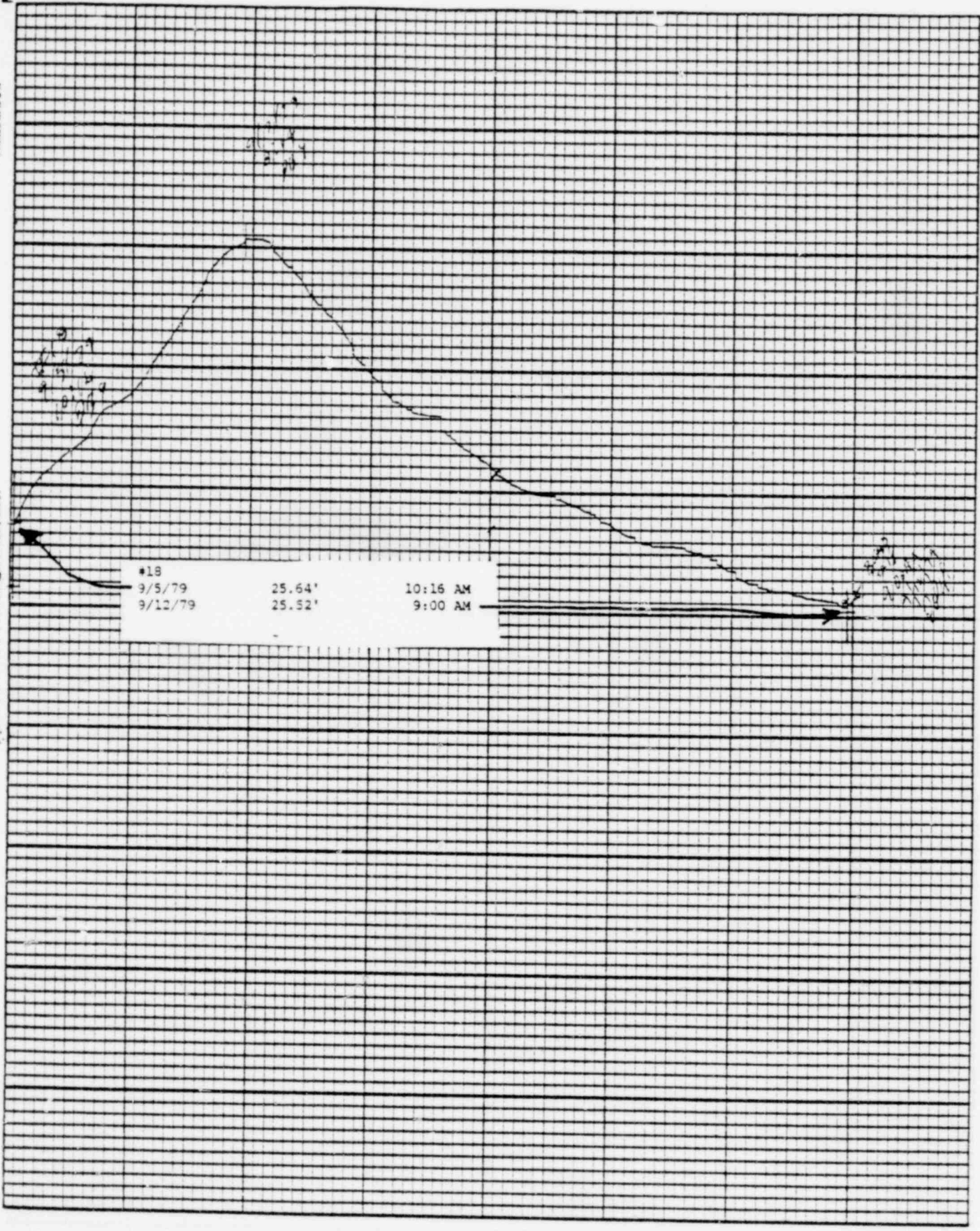
POOR ORIGINAL

1018 133



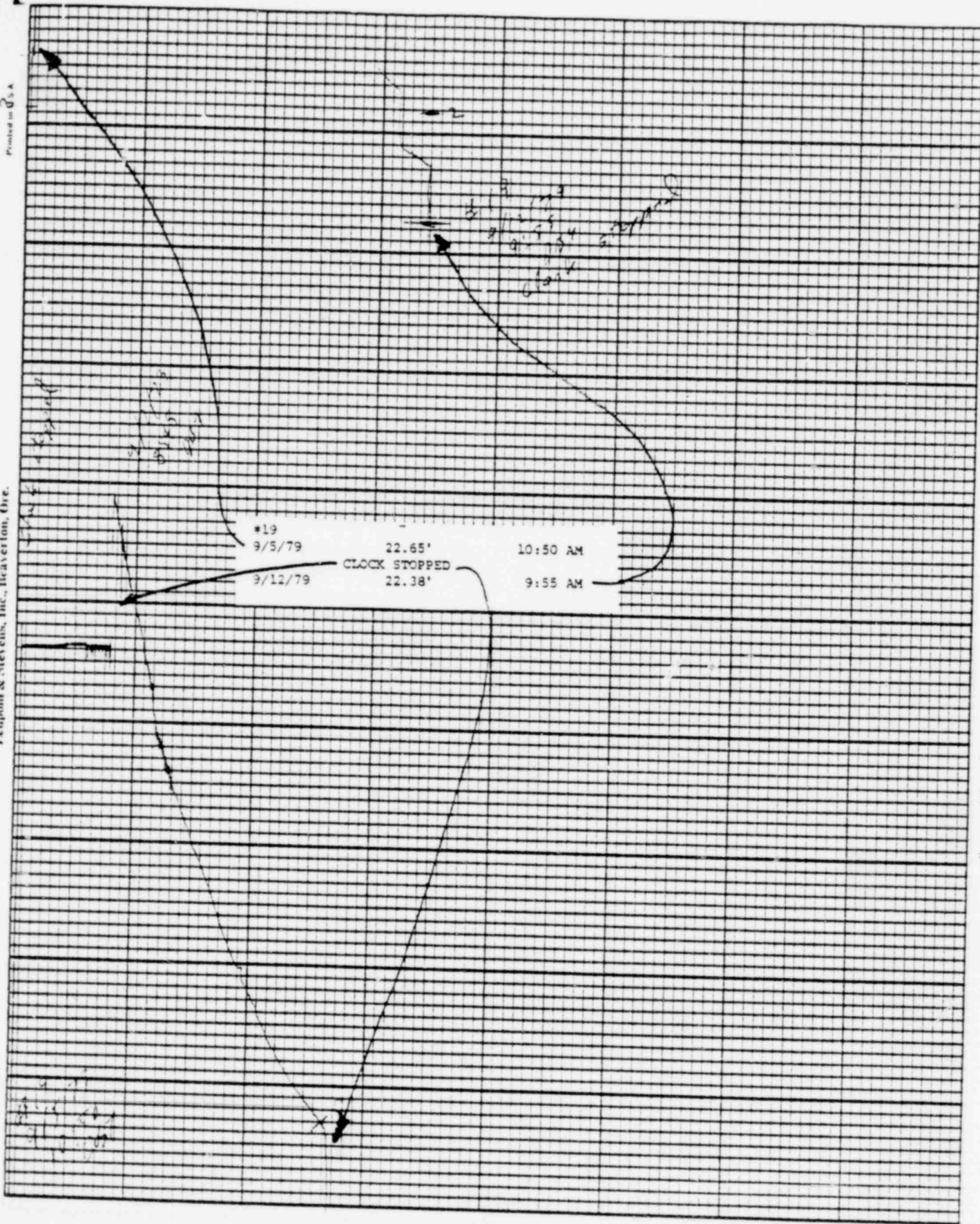
POOR ORIGINAL

1018 134



POOR ORIGINAL

1018 135

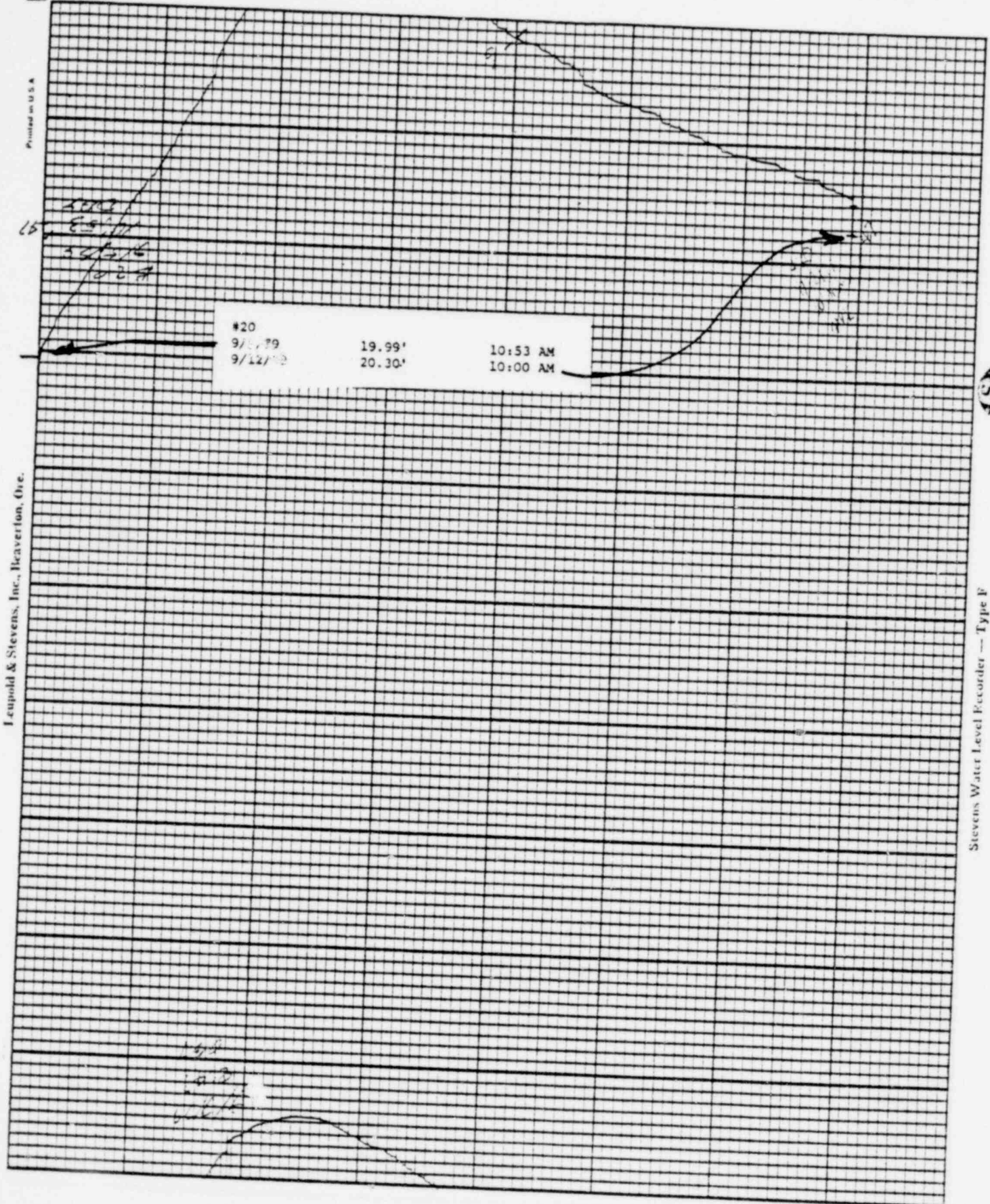


POOR ORIGINAL

1018 136

Printed in U.S.A.

Chart F-1



Leupold & Stevens, Inc., Beaverton, Ore.

Stevens Water Level Recorder — Type F

POOR ORIGINAL

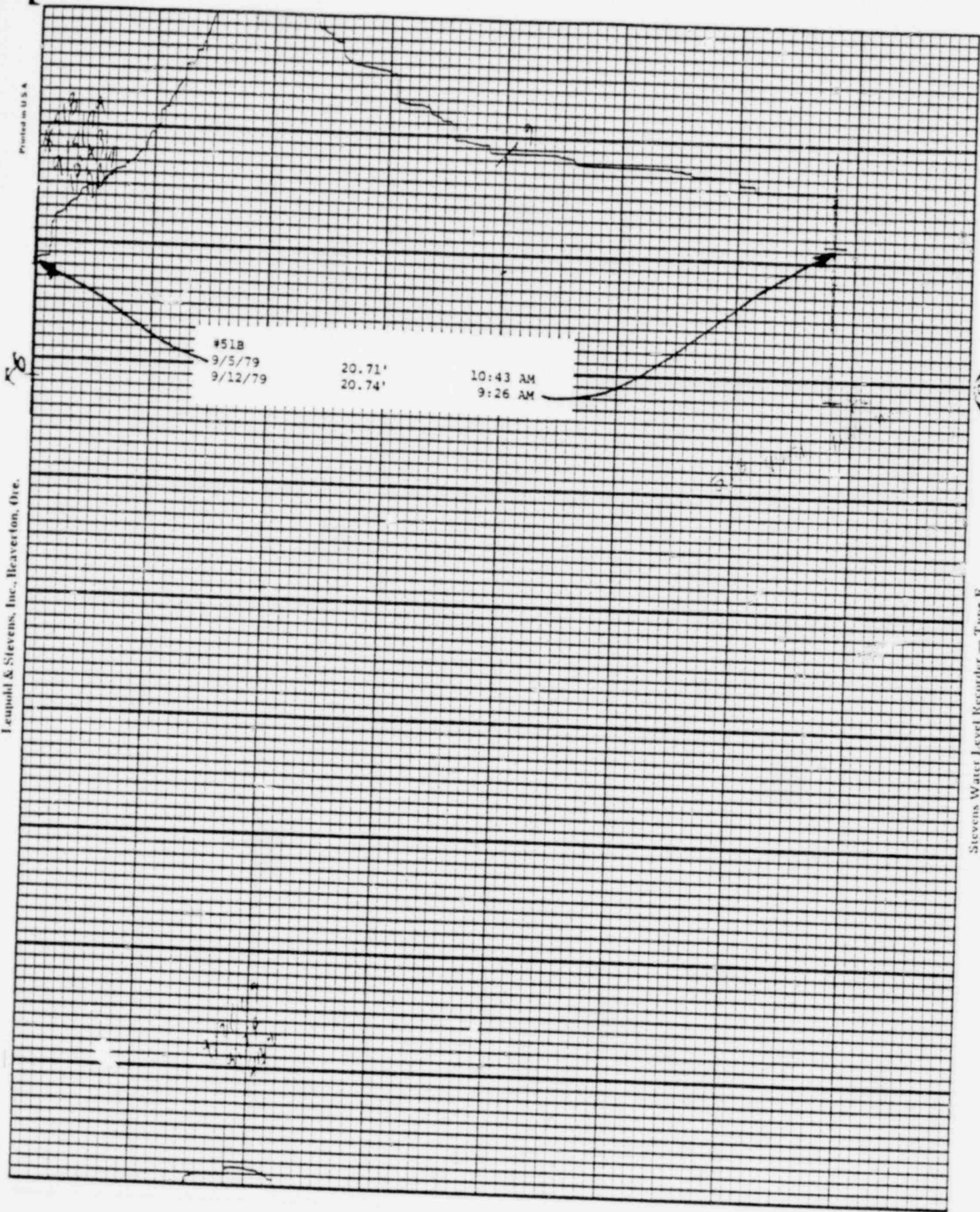
1018 137

Printed in U.S.A.

Chart F-1

Leupold & Stevens, Inc., Beaverton, Ore.

Stevens Water Level Recorder - Type F



POOR ORIGINAL

1018 138

Printed in U.S.A.

76

45
11.18
11.18
11.18

#51C		
9/5/79	15.33'	10:41 AM
9/12/79	15.75'	9:35 AM

11.18
11.18
11.18

Leopold & Stevens, Inc., Beaverton, Ore.

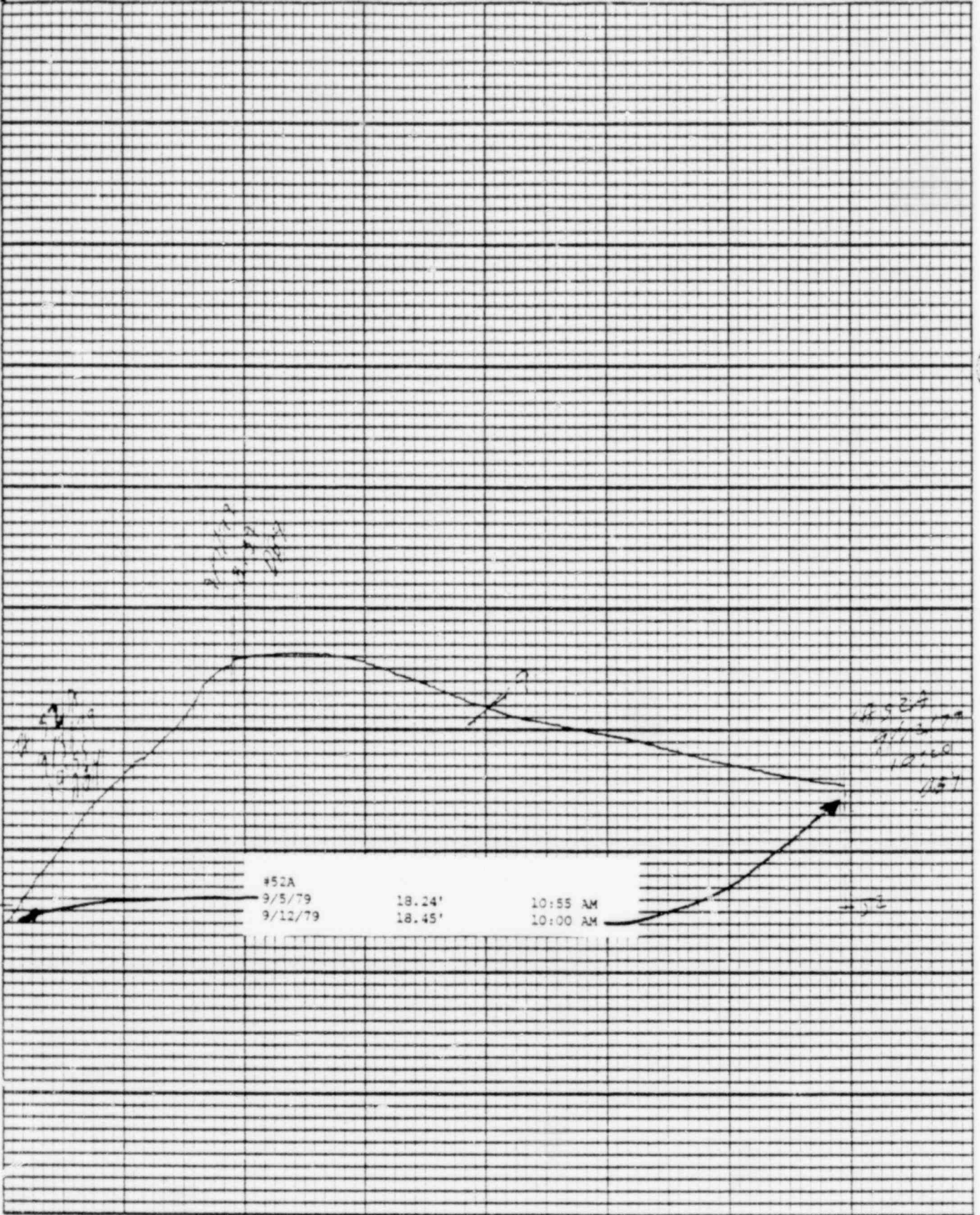
Chart F-1

S

Stevens Water Level Recorder - Type F

POOR ORIGINAL

1018 139



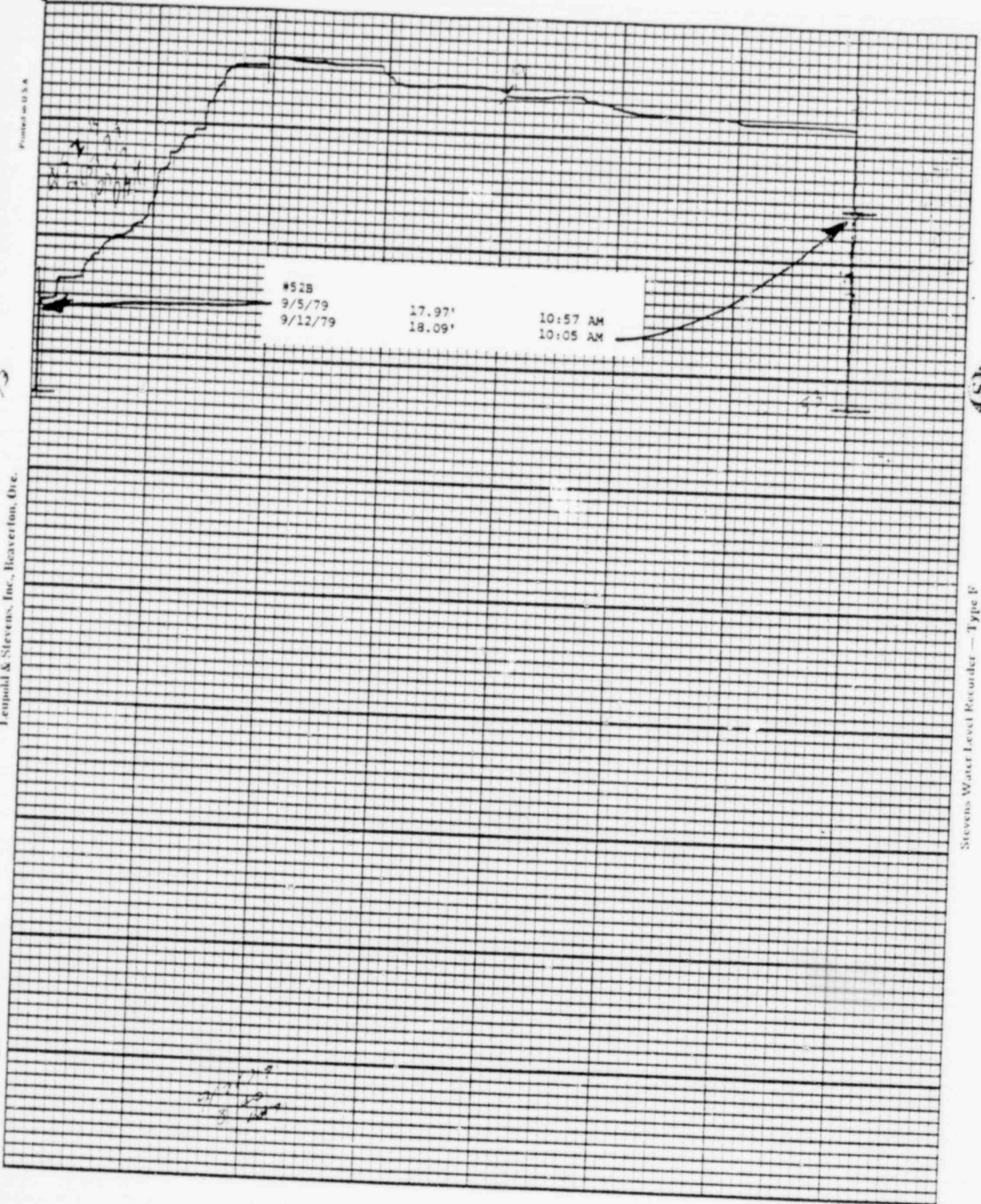
POOR ORIGINAL

1018 140

Printed in U.S.A.

Leopold & Stevens, Inc., Beaverton, Ore.

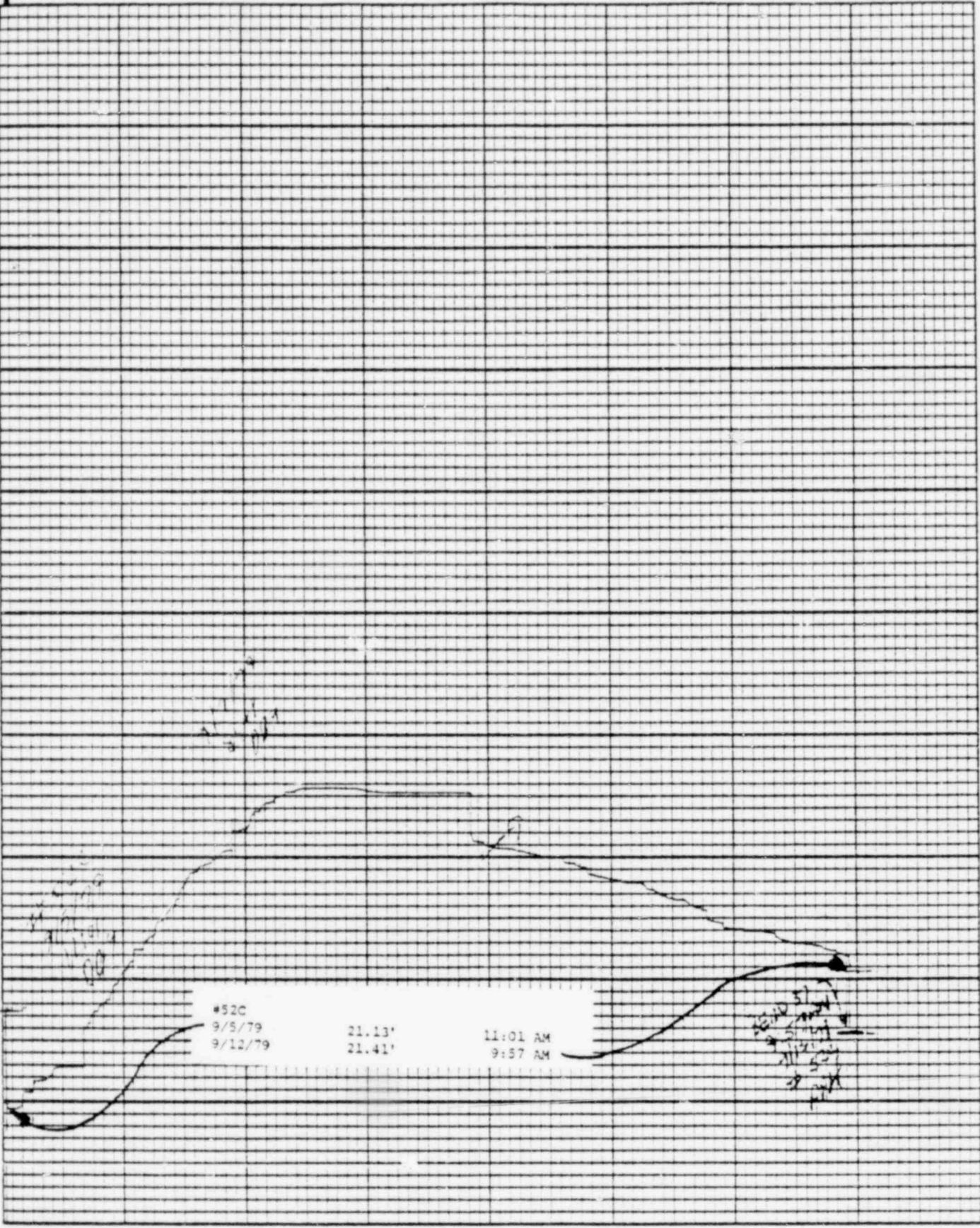
Chart F-1



Stevens Water Level Recorder — Type F

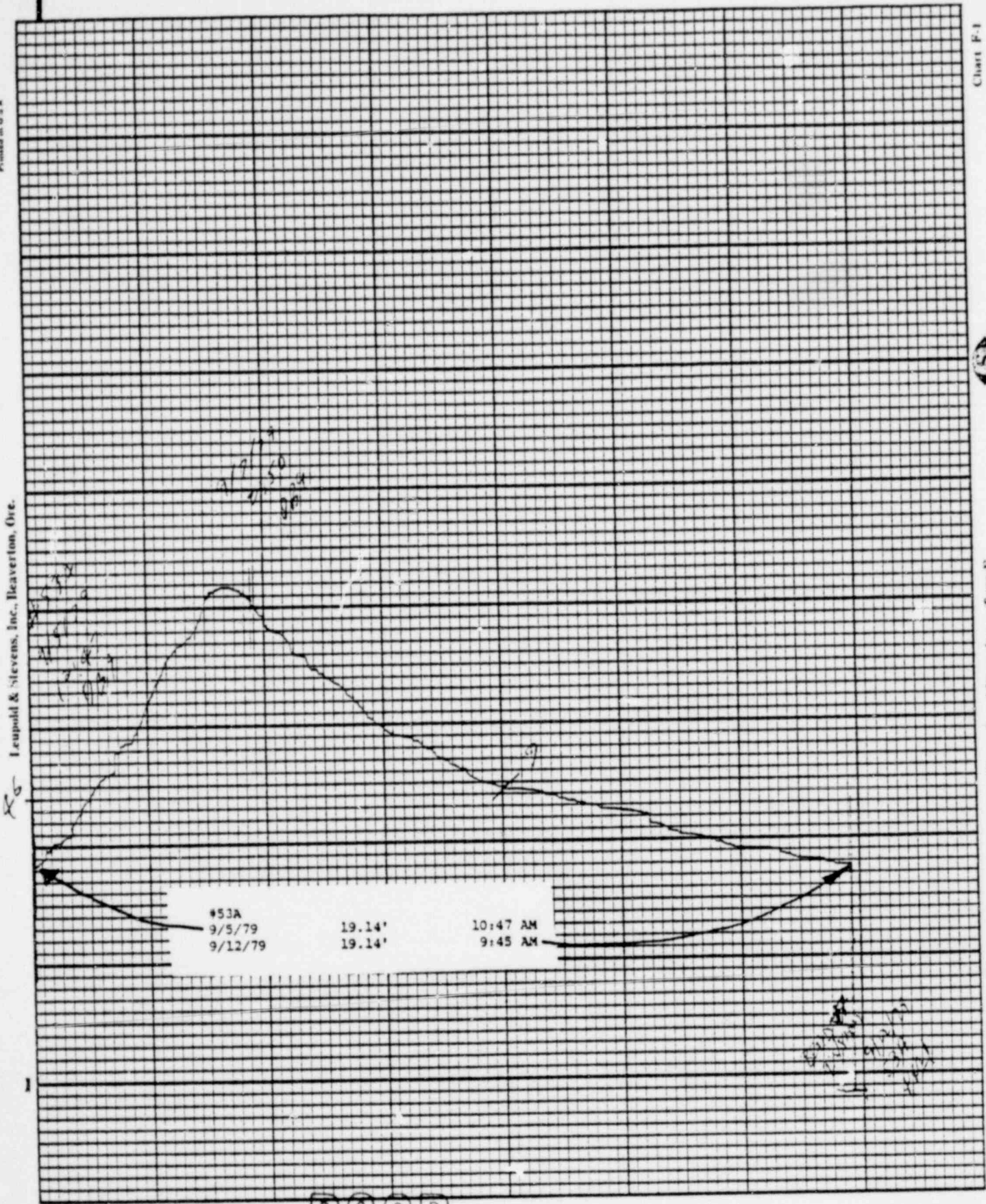
POOR ORIGINAL

1018 141



POOR ORIGINAL

1018 142



POOR ORIGINAL

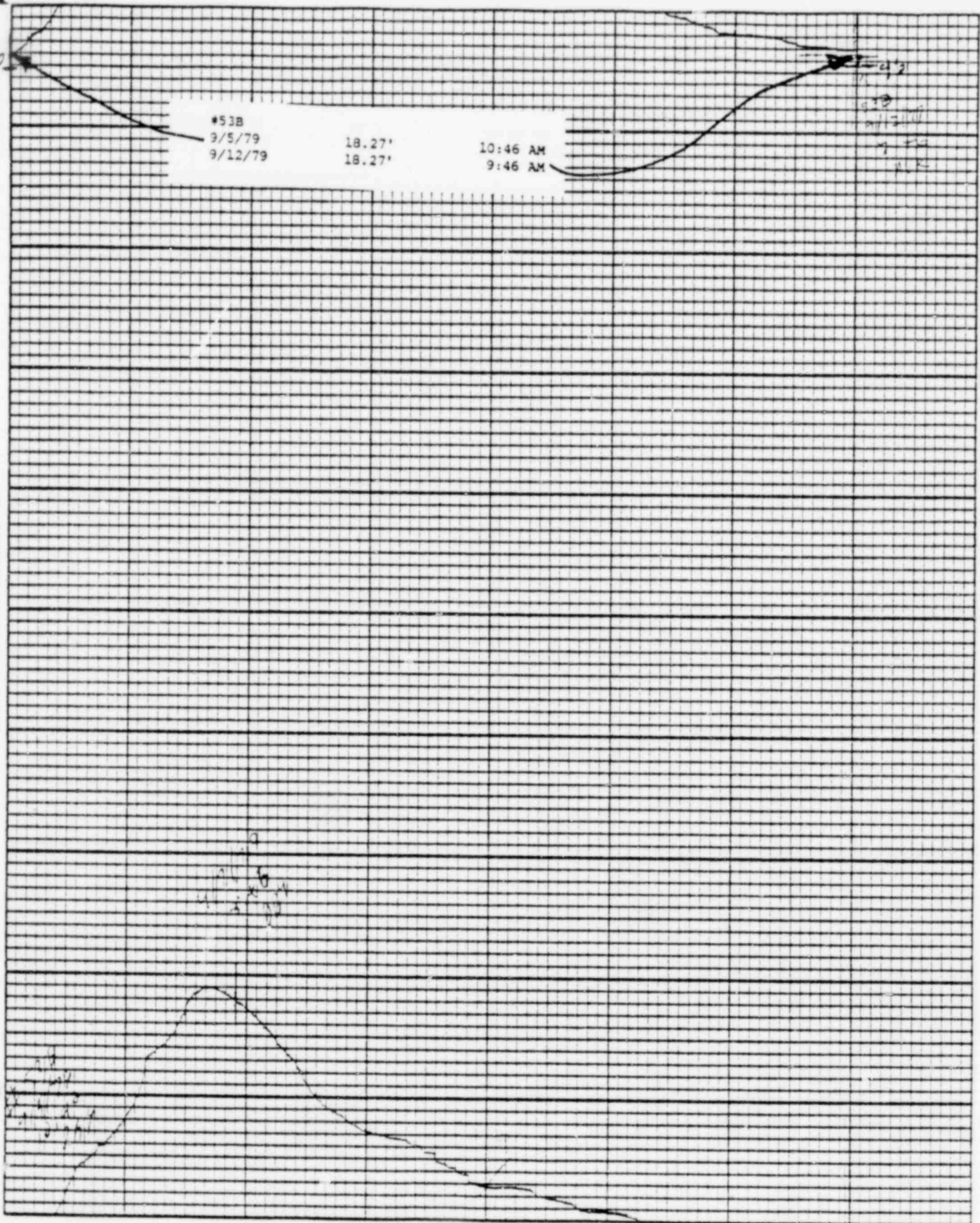
1018 143

Printed on U.S.A. X-6

Leopold & Stevens, Inc., Beaverton, Ore.

Chart F-1

Stevens Water Level Recorder -- Type F



POOR ORIGINAL

1018 144

Printed on U.S.A.

Leopold & Stevens, Inc., Beaverton, Ore. X

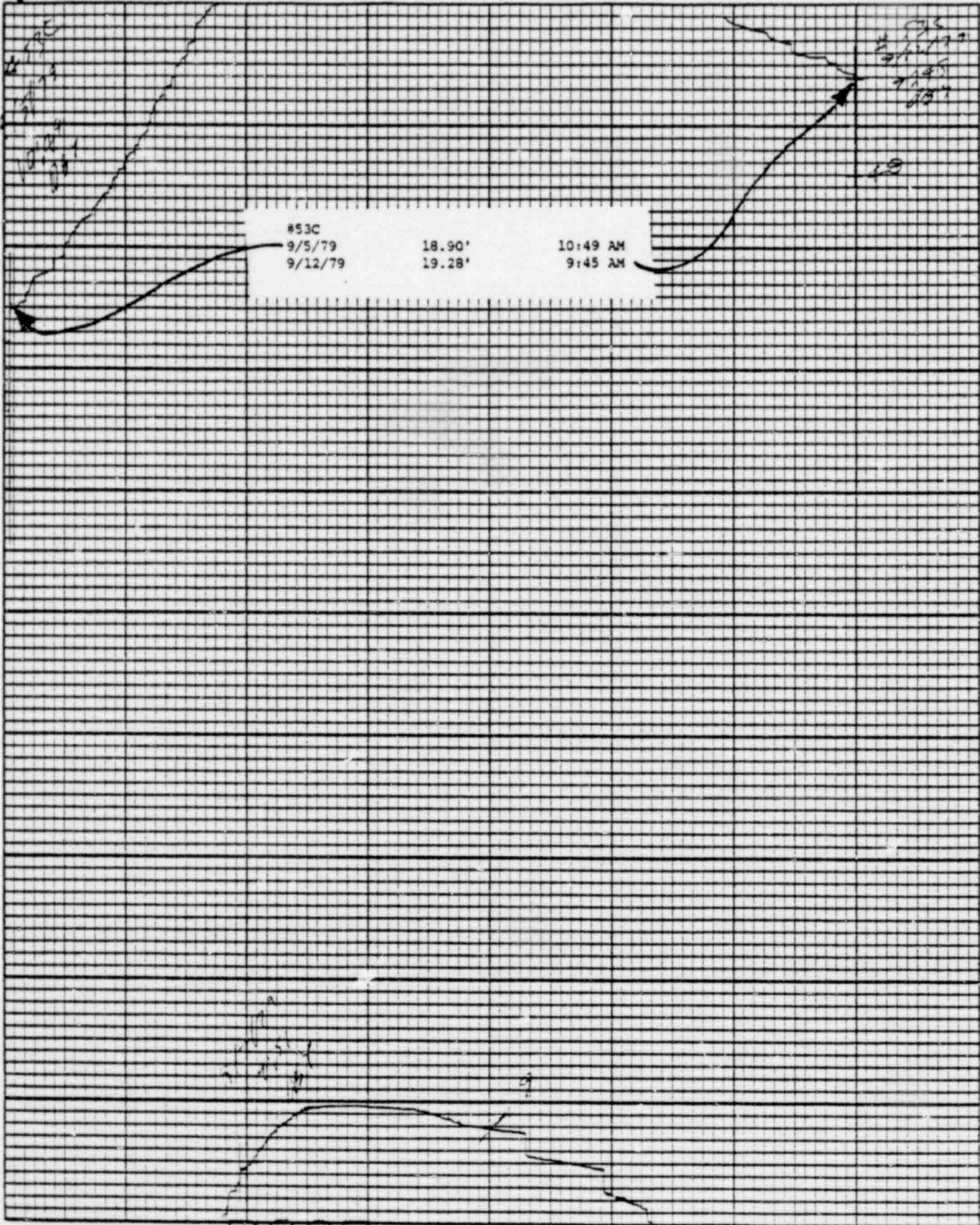


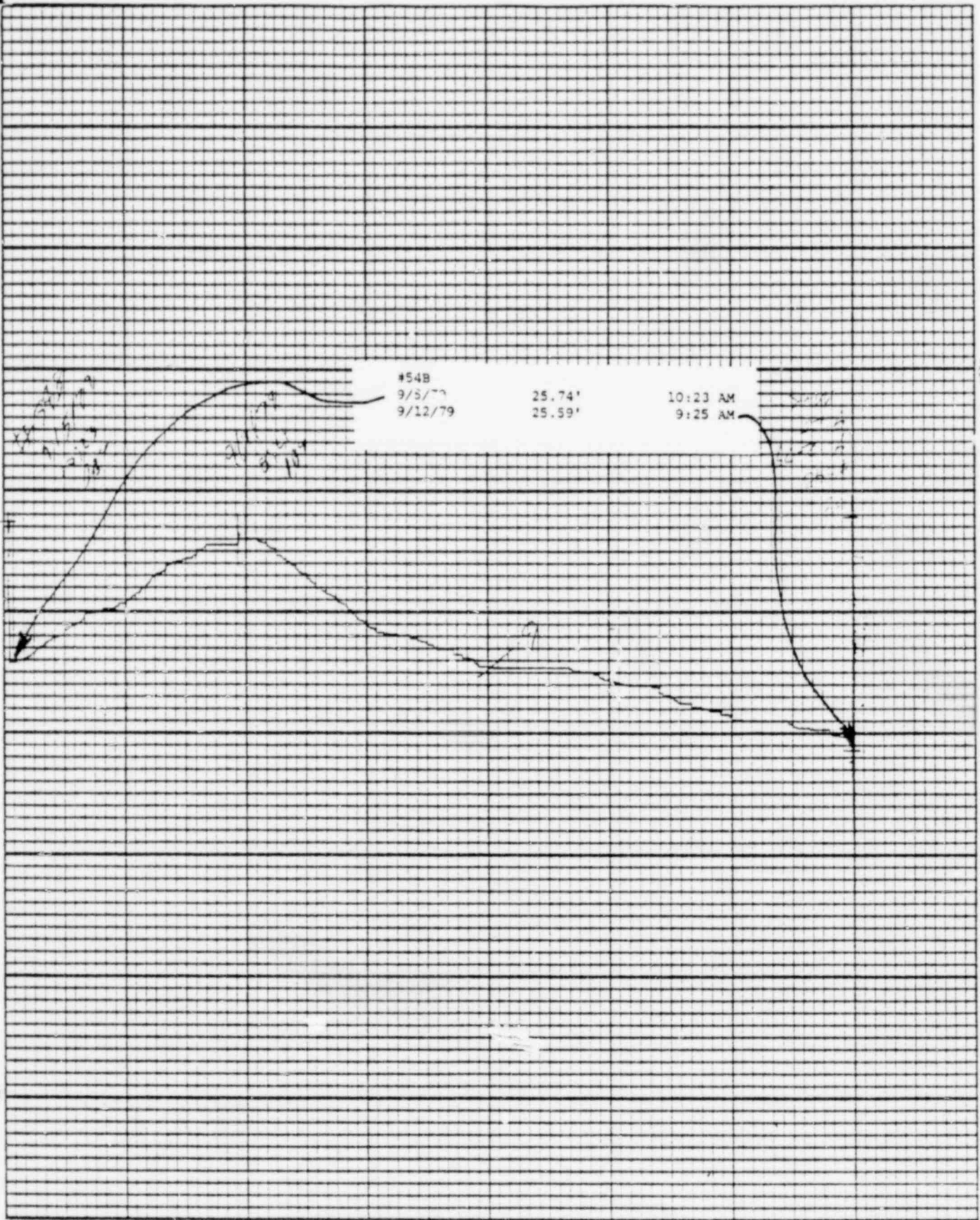
Chart F-1

(S)

Stevens Water Level Recorder — Type F

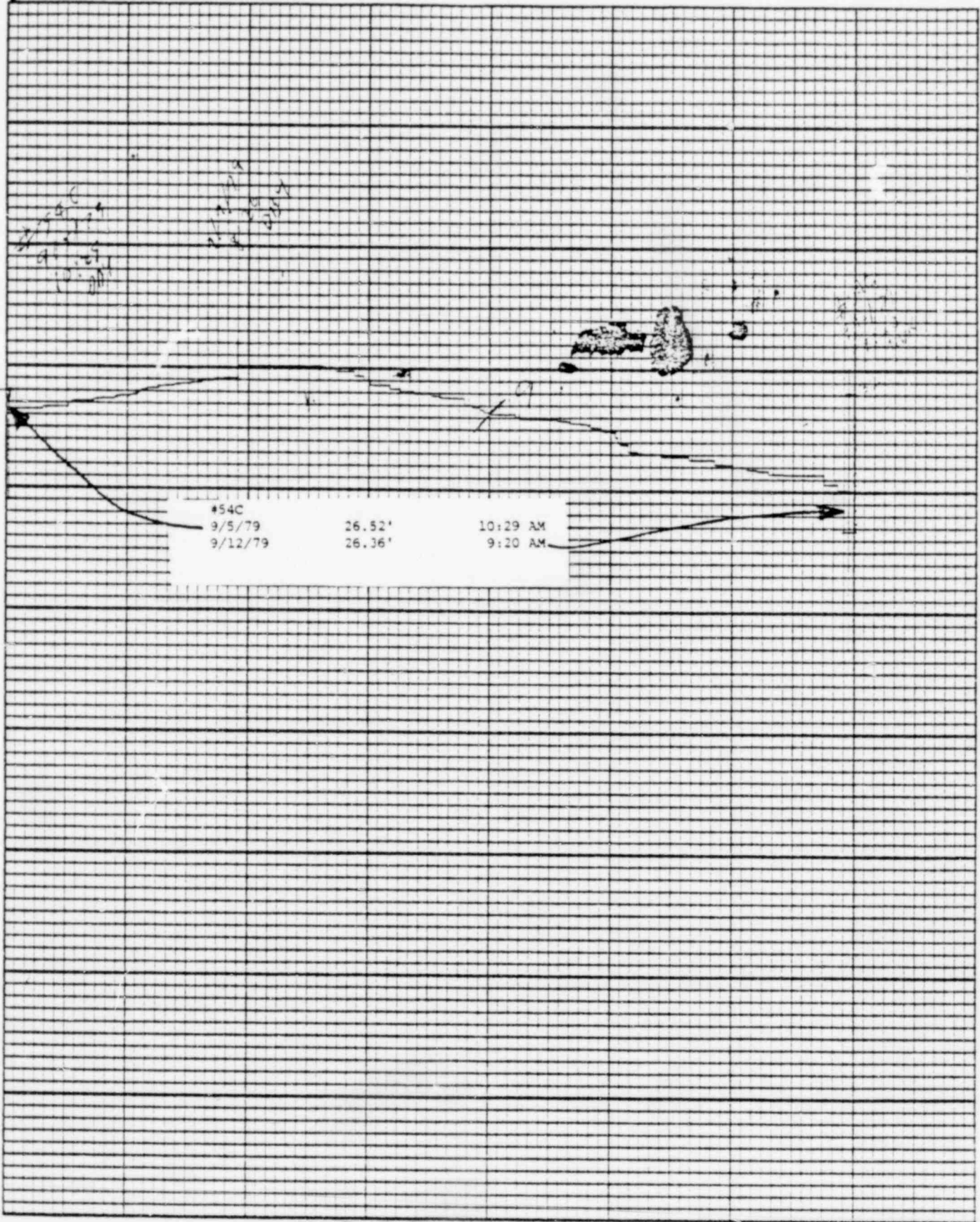
POOR ORIGINAL

1018 145



POOR ORIGINAL

1018 146



(5)

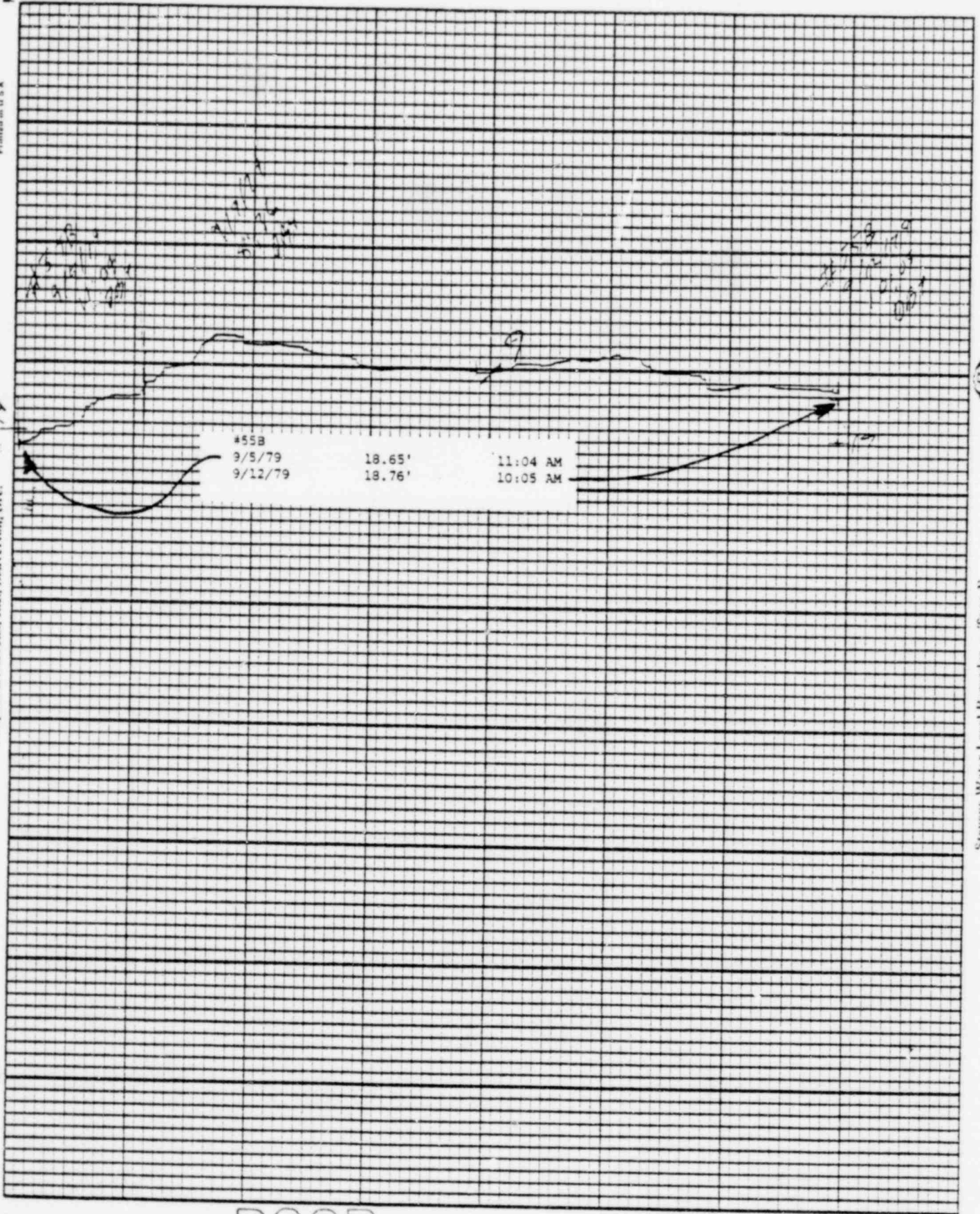
POOR ORIGINAL

1018 147

Printed in U.S.A.

Chart F-1

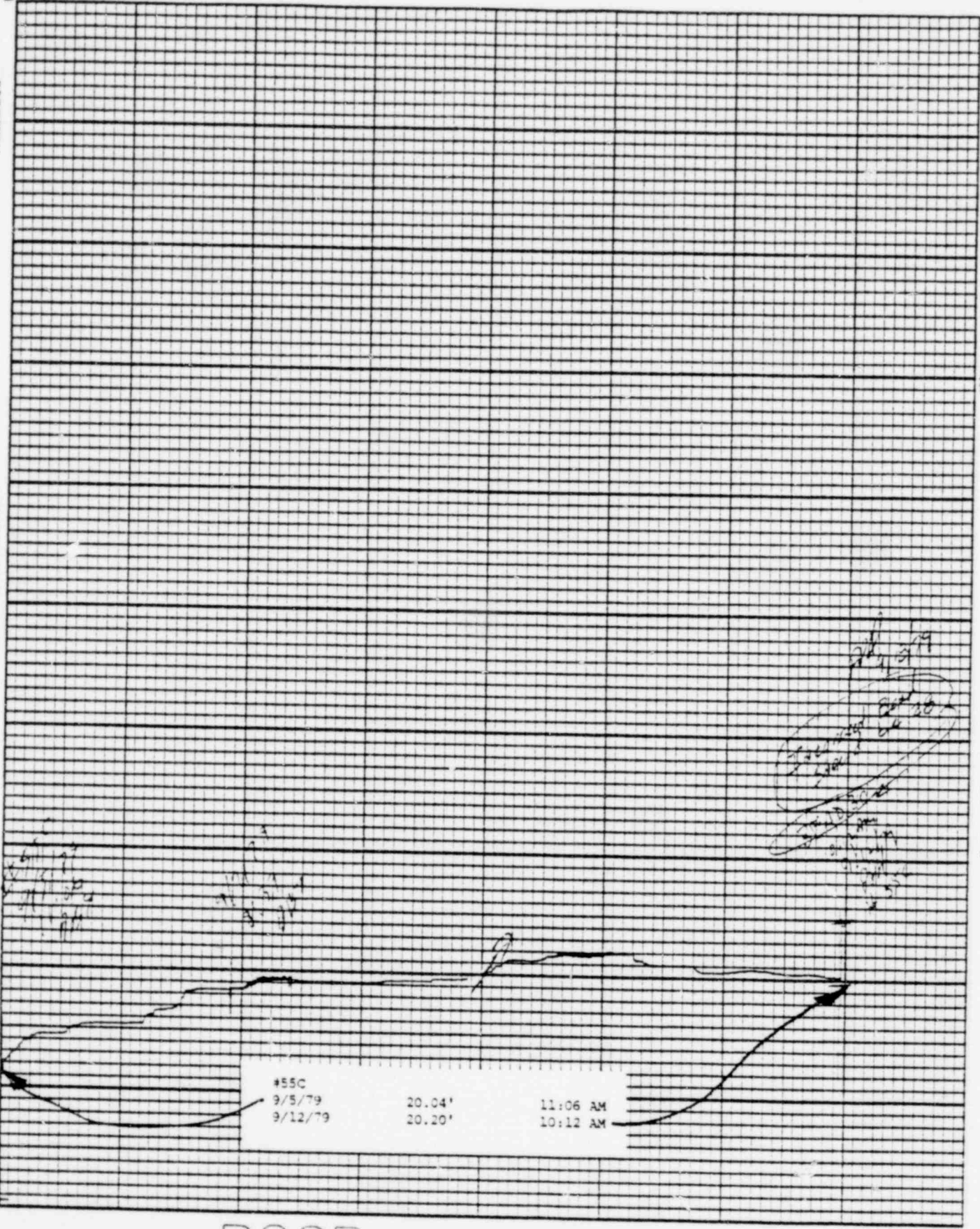
Leupold & Stevens, Inc., Beaverton, Ore.



Stevens Water Level Recorder — Type F

POOR ORIGINAL

1018 148



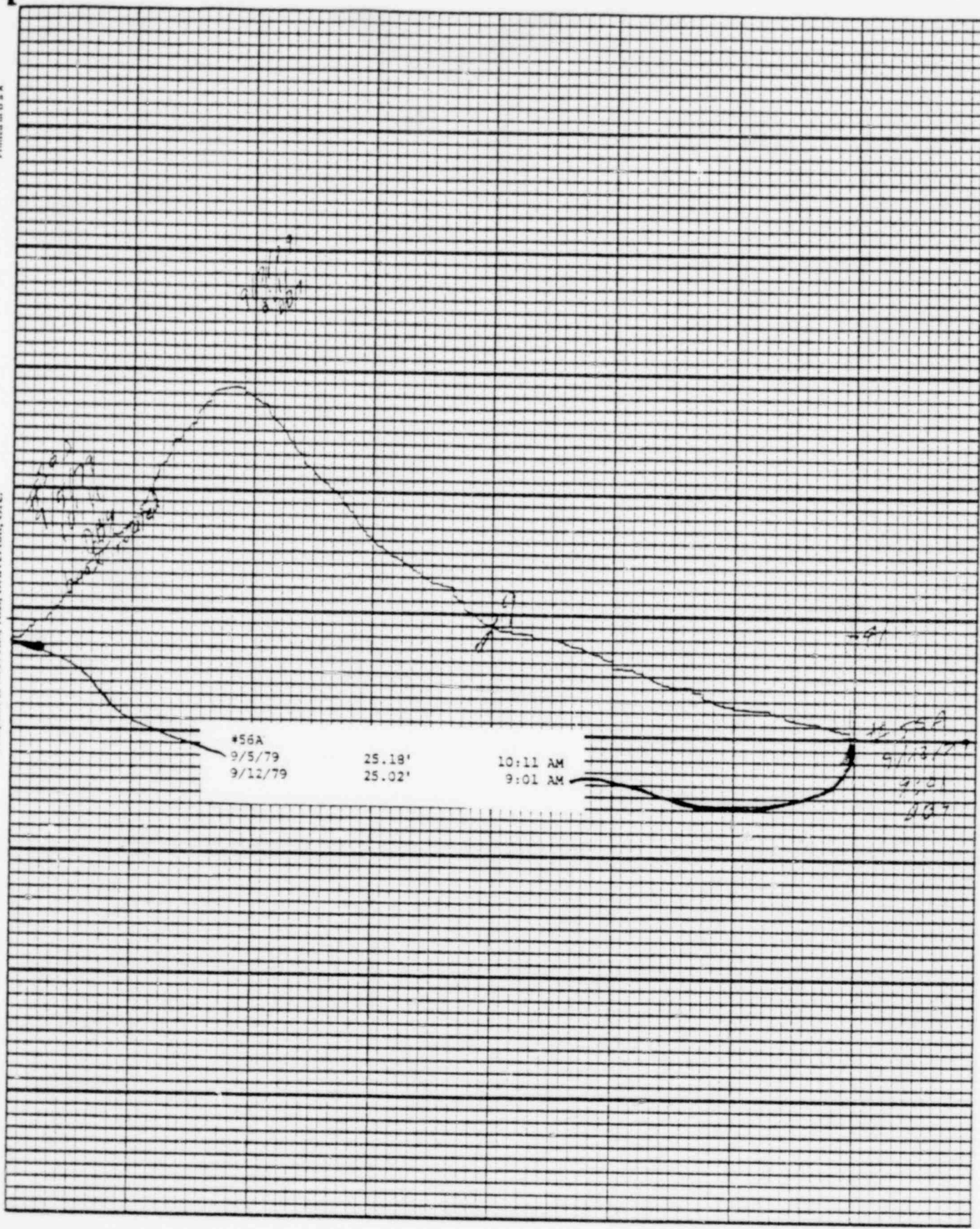
POOR ORIGINAL

1018 149

Leopold & Stevens, Inc., Beaverton, Ore.



Stevens Water Level Recorder — Type F



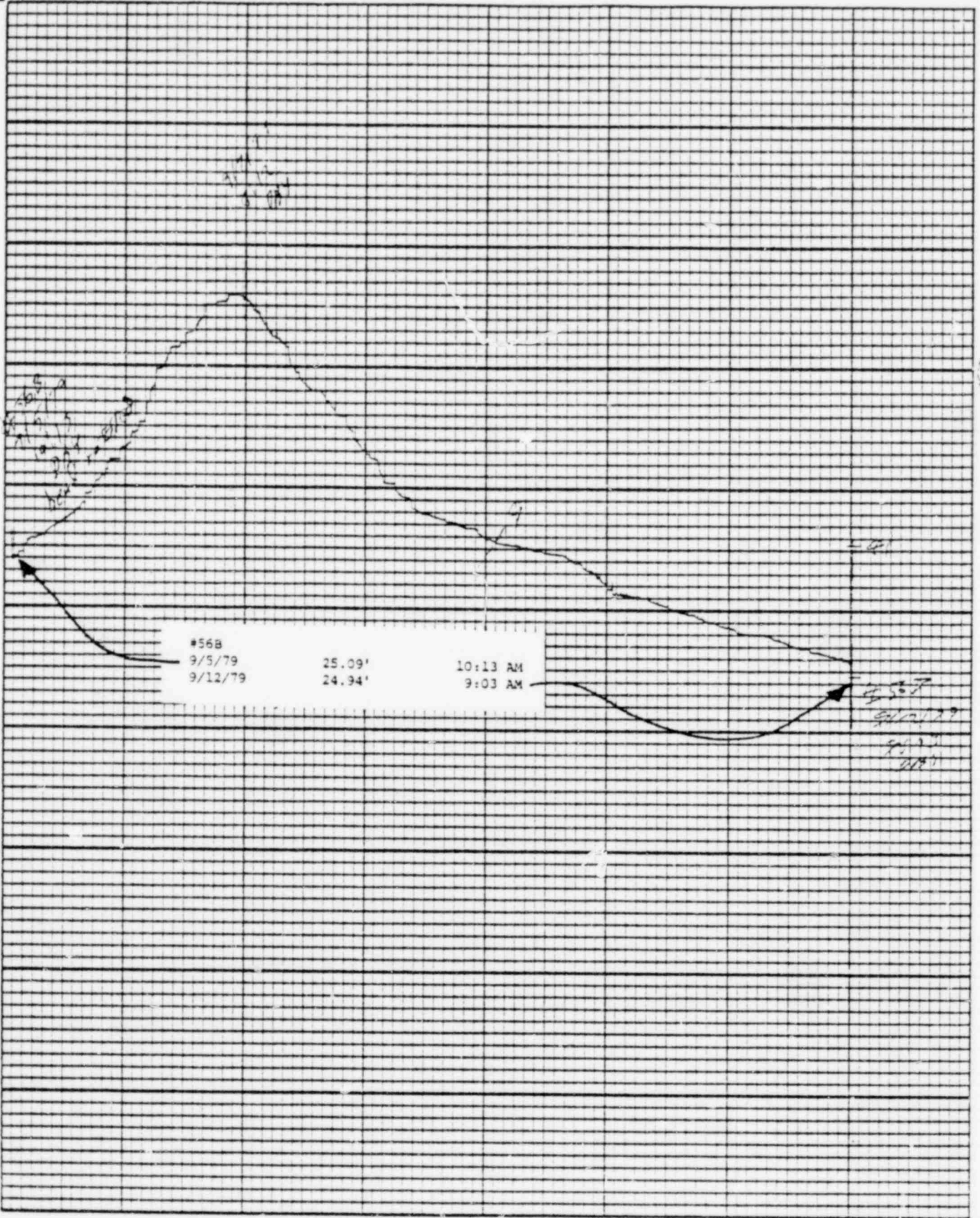
*56A			
9/5/79	25.18'	10:11 AM	
9/12/79	25.02'	9:01 AM	

5/13/79
9:01
207

POOR ORIGINAL

1018 150

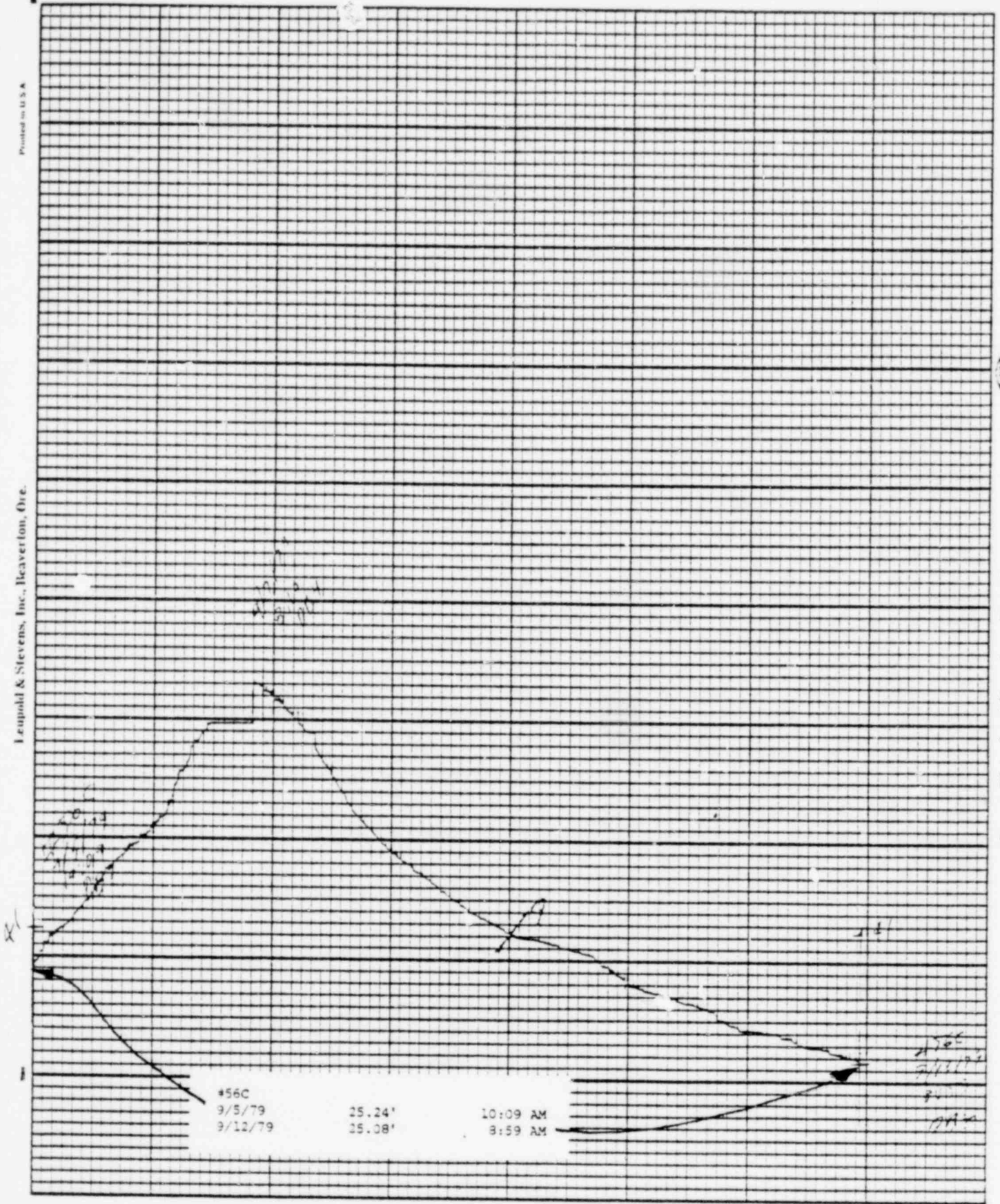
Leopold & Stevens, Inc., Beaverton, Ore.



Stevens Water Level Recorder — Type F

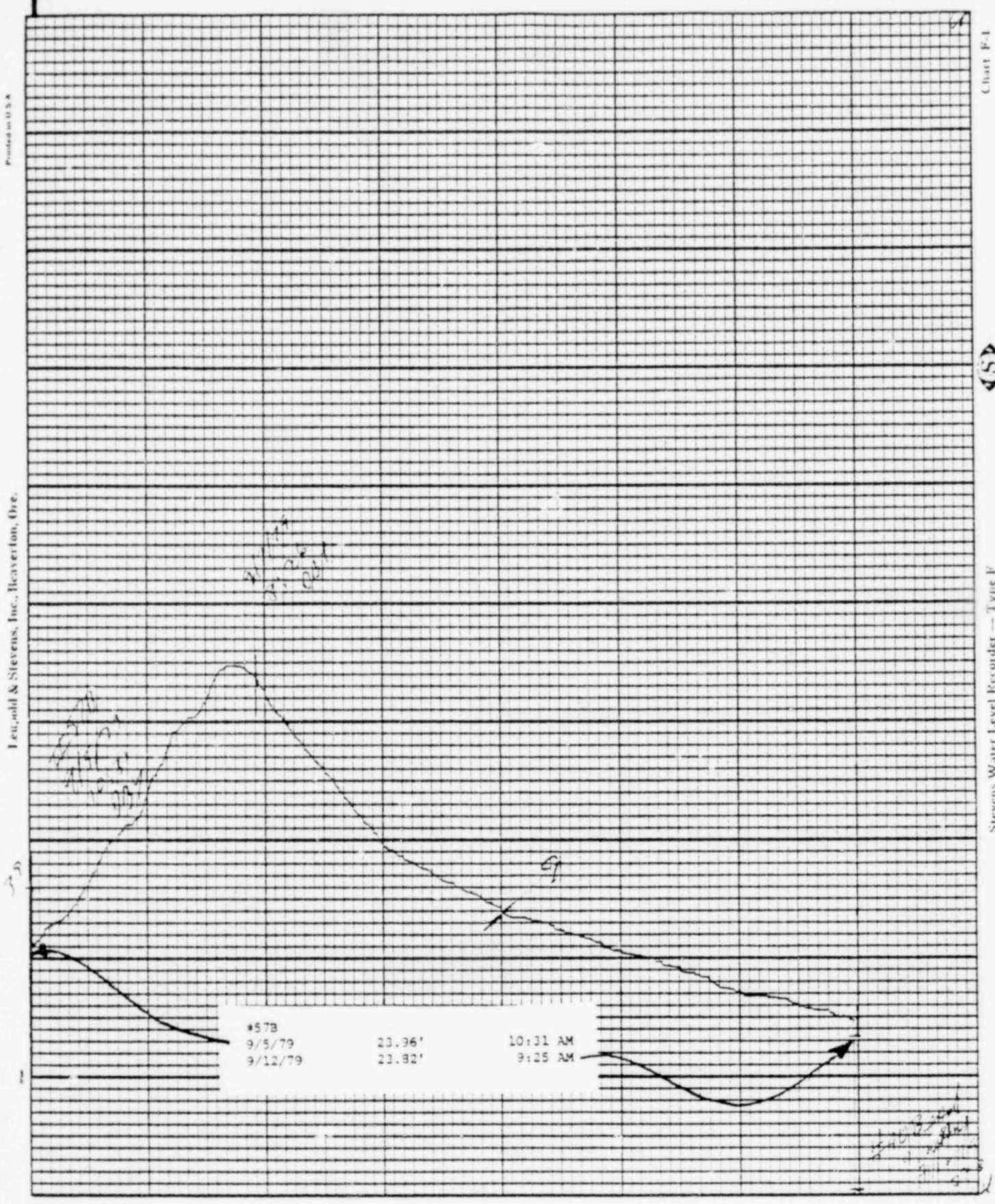
POOR ORIGINAL

1018 151

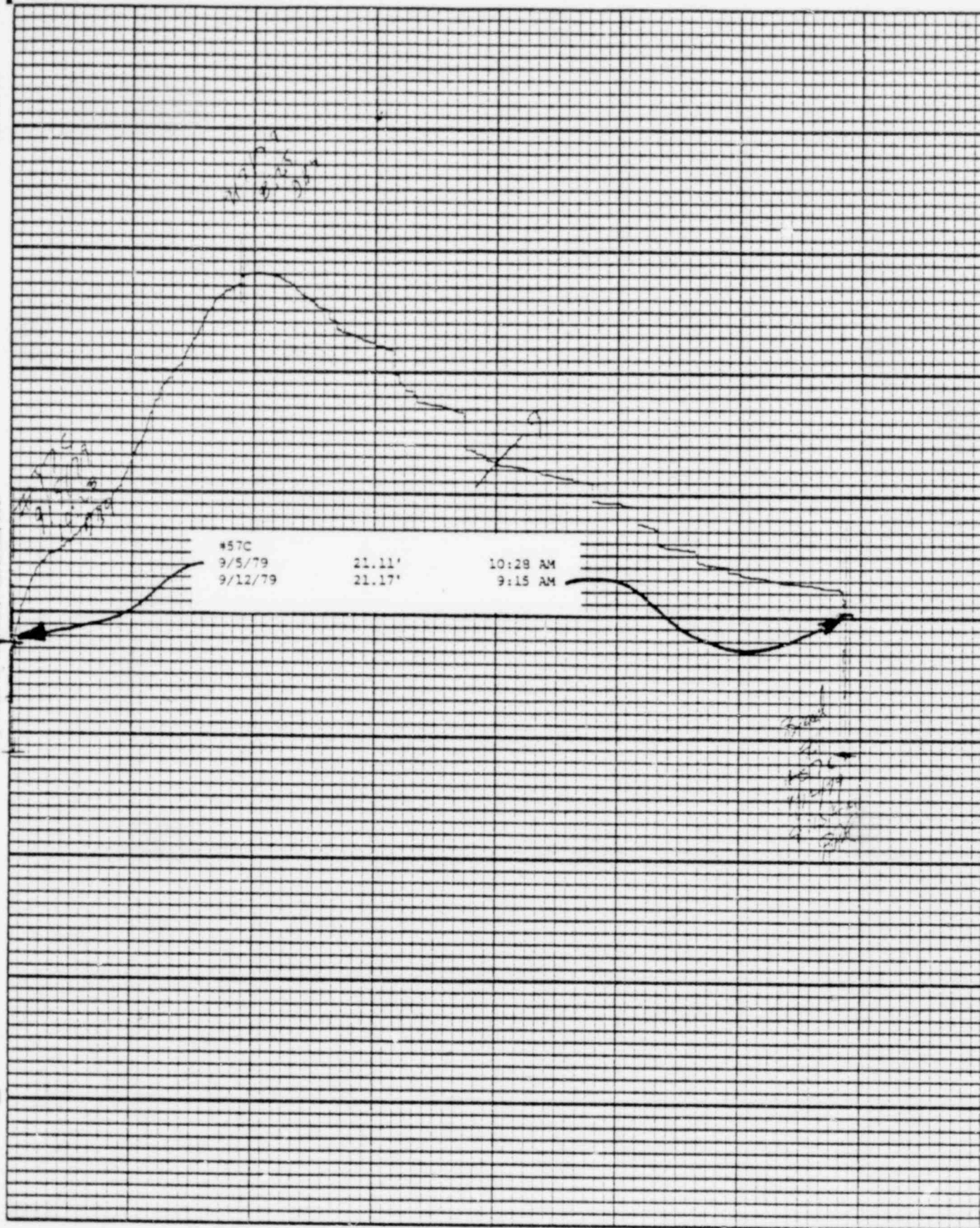


POOR ORIGINAL

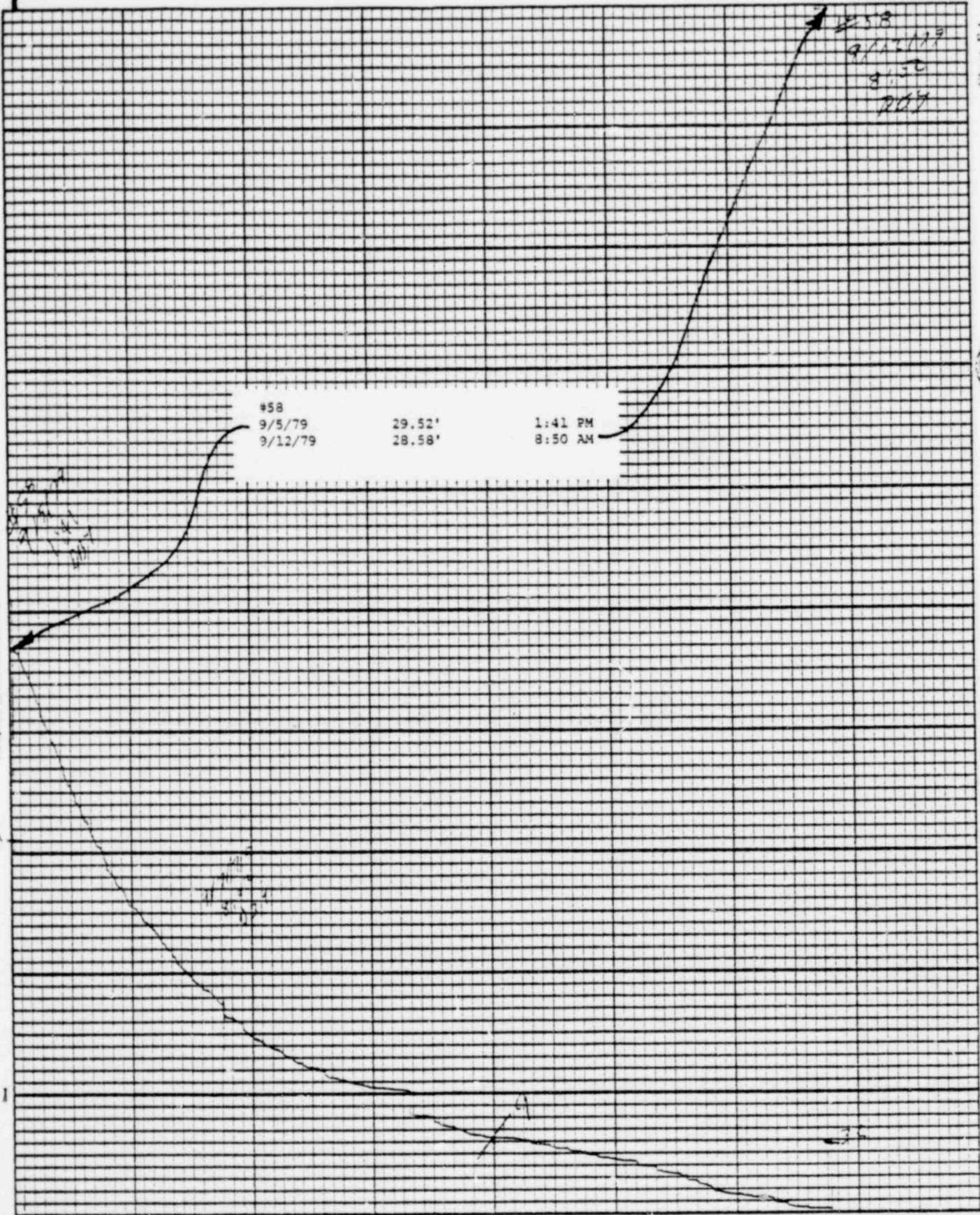
1018 152



POOR ORIGINAL

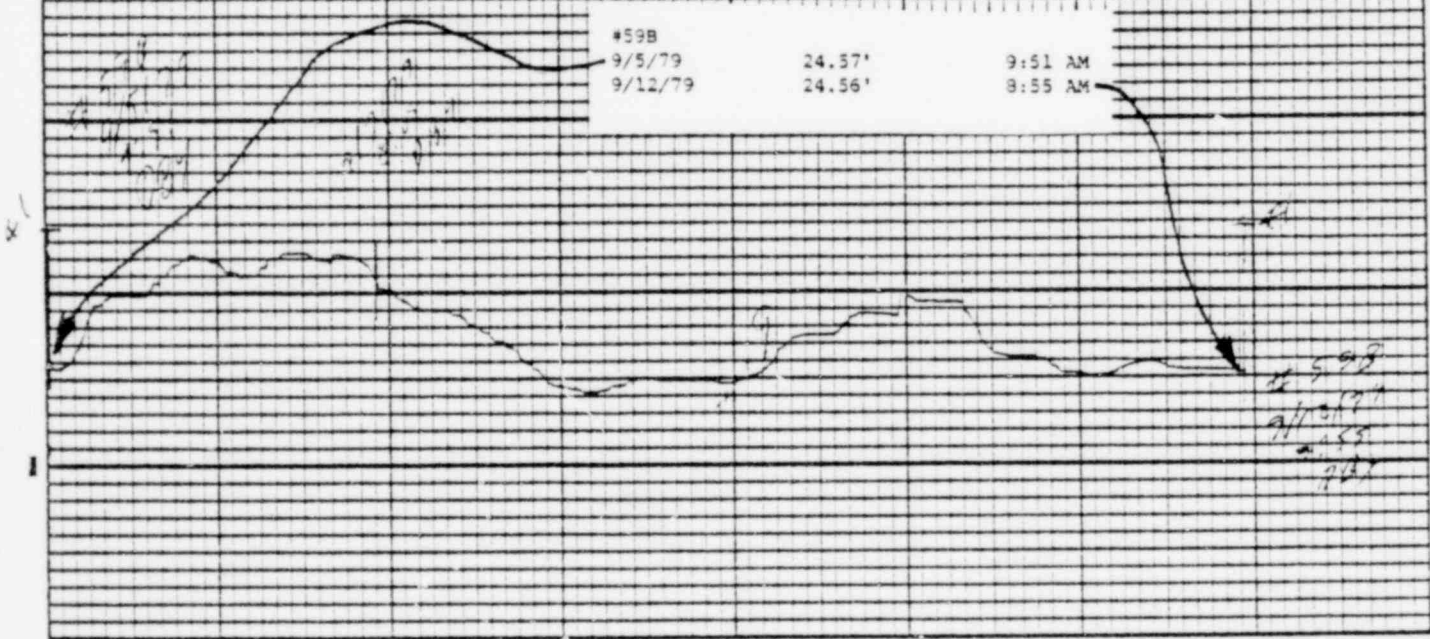


POOR ORIGINAL



POOR ORIGINAL

1018 155



POOR ORIGINAL

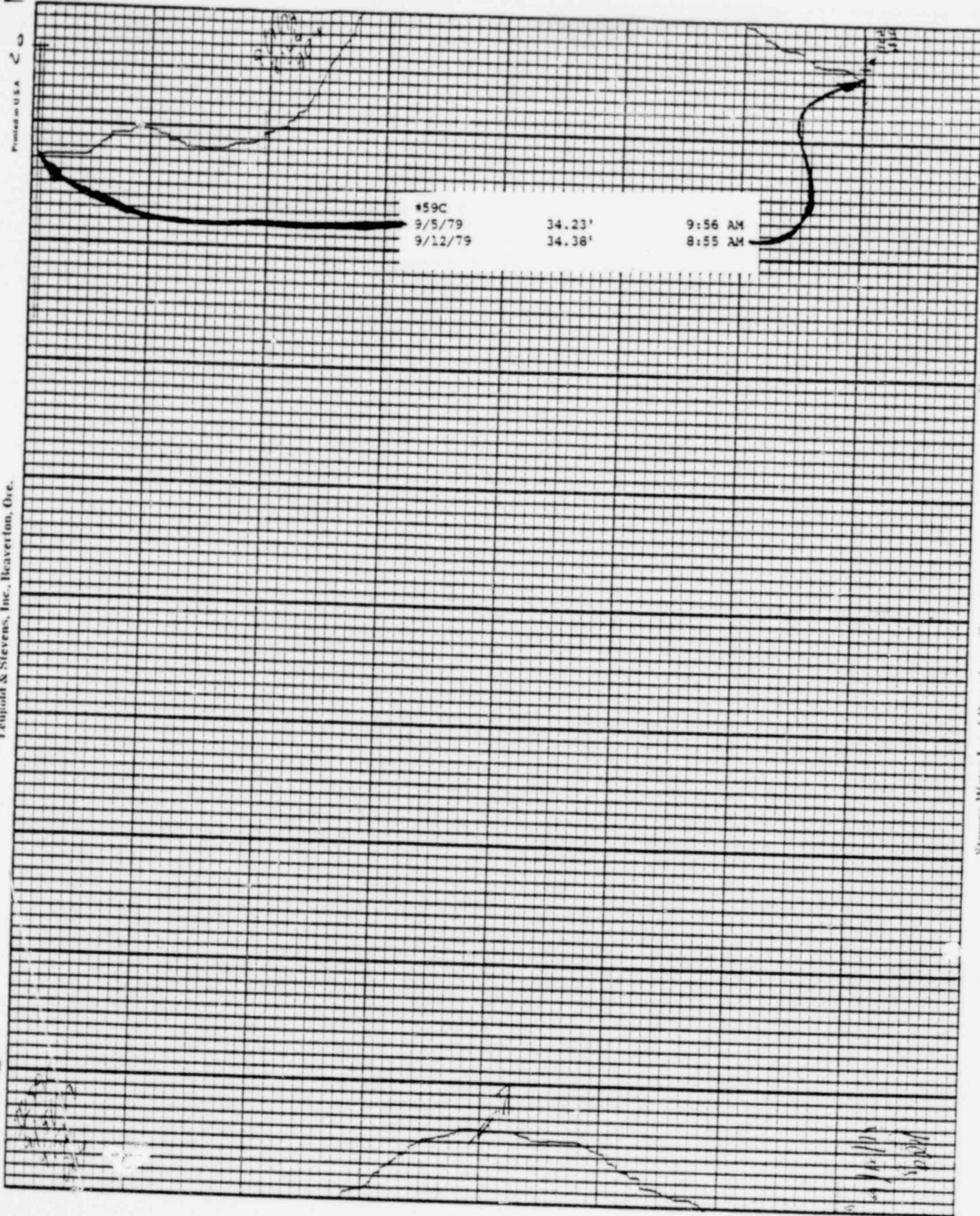
1018 156

Printed in U.S.A.

Leupold & Stevens, Inc., Beaverton, Ore.

Chart P-1

Stevens Water Level Recorder — Type F



POOR ORIGINAL

1018 157

BAILLY WELLS WITHOUT RECORDERS

9/12/79

<u>WELL #</u>	<u>WATER ELEVATION IN FEET</u>
62	32.21
65	27.77
67	23.44
72	10.83
73	11.23
74	14.64

DBY:bd

1018 158

POND LEVELS

<u>POND</u>	<u>9/12/79</u>
1	28.89'
2	30.52'
3	28.90'
4	23.82'
5	23.25'
6	33.44'
7	DRY
8	DRY
9	28.49'
10	39.52'
11	40.17'
12	38.12'
13	38.99'

DBY:bd

1018 159

PNEUMATIC PRESSURE TRANSDUCERS

9/12/79

<u>TRANSDUCER</u>	<u>WATER ELEVATION IN FEET</u>
P-1	10.7
P-2	9.9
P-3	8.0
P-4	17.4
P-5	16.5
P-6	15.5

DBY:bd

POOR
ORIGINAL

1018 150

WATER METER READINGS

<u>DATE</u>	<u>TIME</u>	<u>METER READING (GALLONS)</u>	<u>INSTANTANEOUS FLOW RATE (GPM)</u>
-------------	-------------	--	--

Sump Pump Discharge

9/12/79	9:50 AM	297,243,000	224
---------	---------	-------------	-----

Well Point Discharge

9/12/79	9:50 AM	8,744,000	NOT IN USE
---------	---------	-----------	------------

DBY:bd

1018 151