



Portland General Electric Company

Charles Goodwin, Jr. Assistant Vice President

September 12, 1979

Trojan Nuclear Plant
Docket 50-344
License NPF-1
License Change Application 55

Director of Nuclear Reactor Regulation
ATTN: Mr. A. Schwencer, Chief
Operating Reactors Branch #1
Division of Operating Reactors
U.S. Nuclear Regulatory Commission
Washington, D. C. 20555

Dear Sir:

Attached are 43 legible copies of the two organization charts in support of LCA 55. These charts replace Figure 6.2-1 (Attachment A, Page 2 of 11), Figure 6.2-2 (Attachment A, Page 3 of 11), Figure 5.1 (Attachment A, Page 10 of 11), and Figure 5.2 (Attachment A, Page 11 of 11). Since some of these figures were illegible in our previous submittal, these copies should help you in completing your review and approval of this LCA. If you have any questions, please do not hesitate to contact me.

Sincerely,

C. Goodwin, Jr.
Assistant Vice President
Thermal Plant Operation and
Maintenance

CG/GAZ/4kk6A15
Attachment

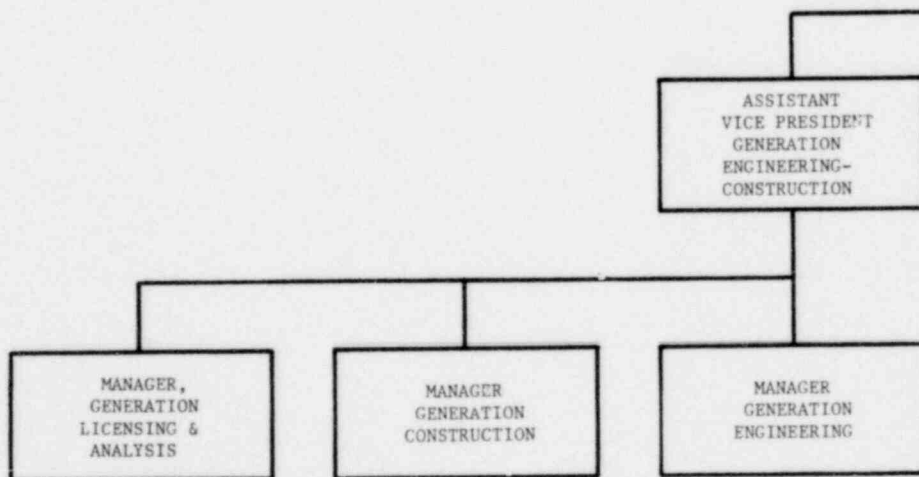
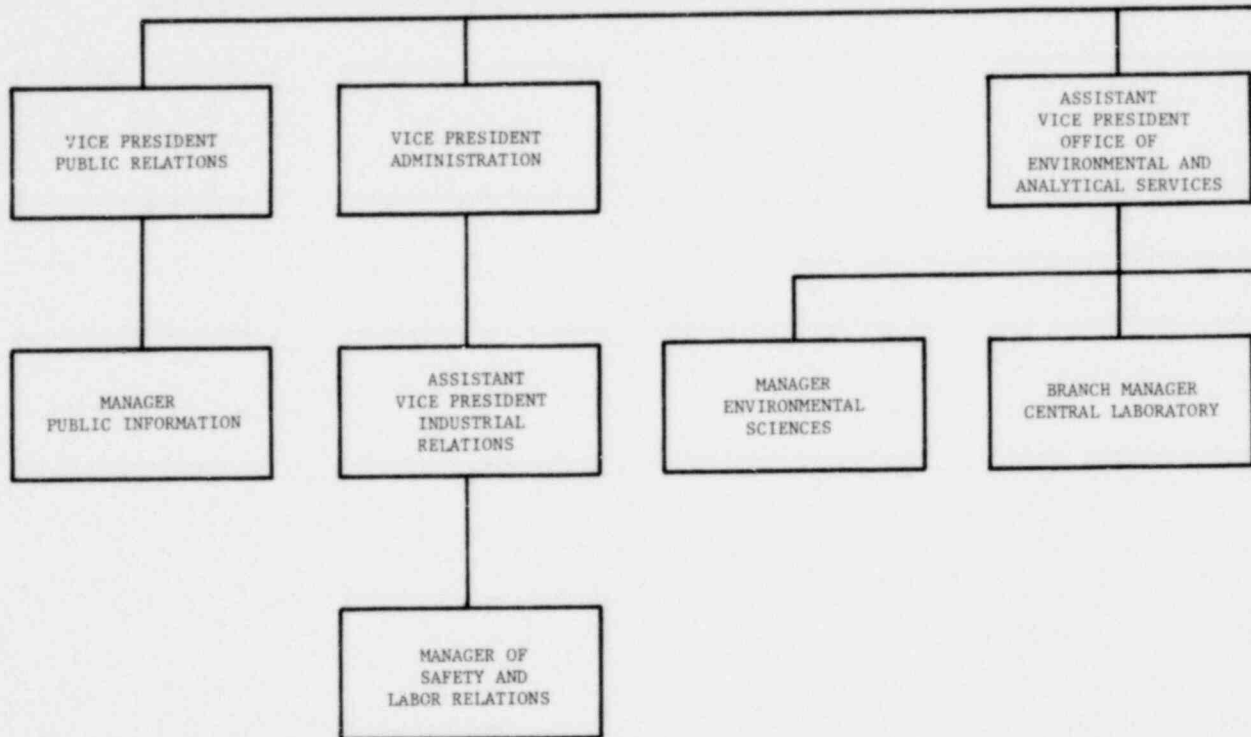
c: Mr. Lynn Frank, Director w/attach
State of Oregon
Department of Energy

*AP01
9/14/79*

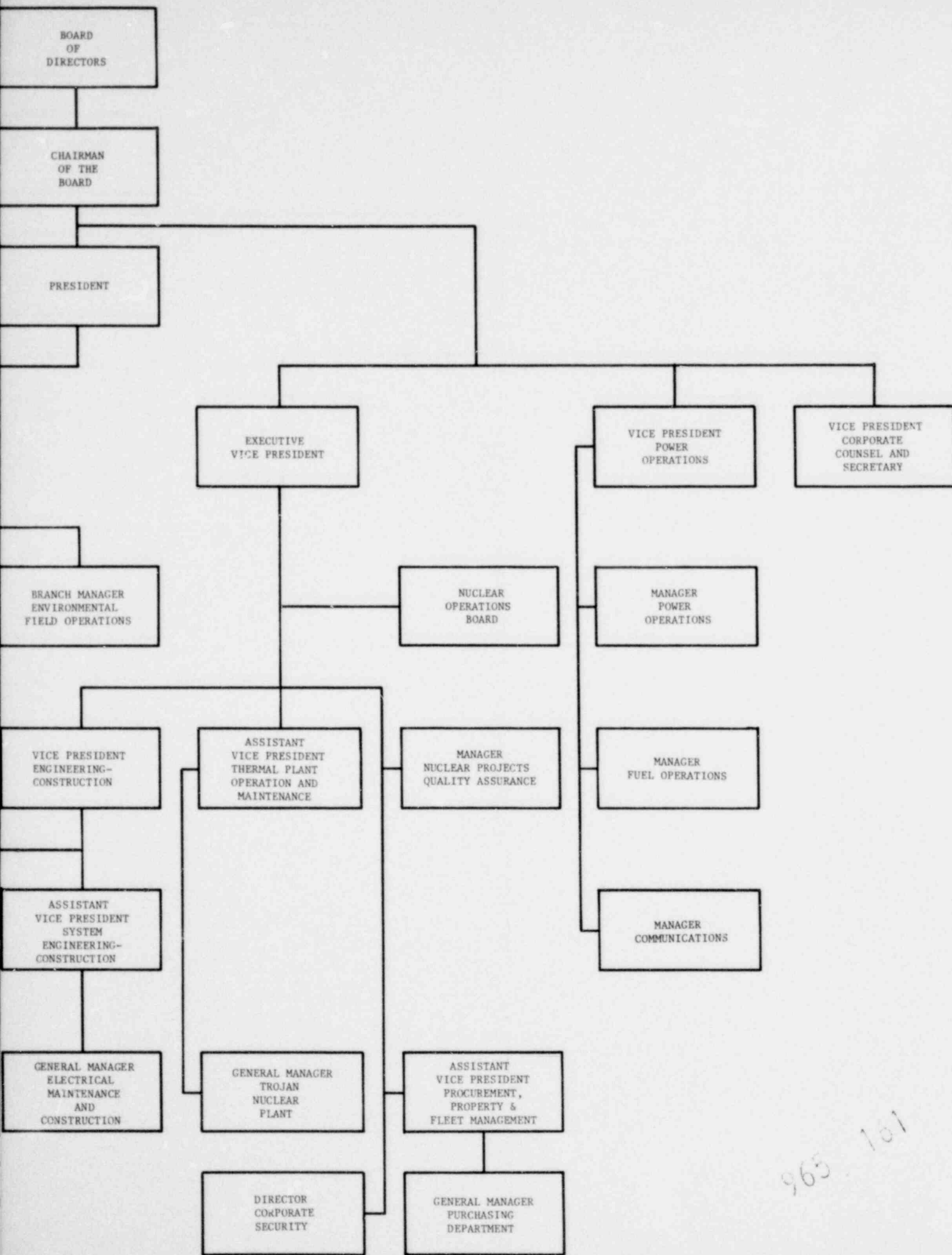
7909190299

965

159



965 160



965 101