

TMI DOCUMENTS

DOCUMENT NO: TM-0643

COPY MADE ON 6/5/79 OF DOCUMENT PROVIDED BY
METROPOLITAN EDISON COMPANY.

DeA
Supervisor, Document Control, NRC

7 9 0 6 1 8 0 6 8 3

228 360

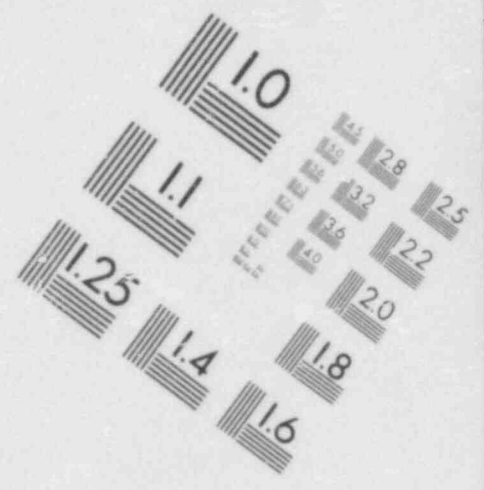
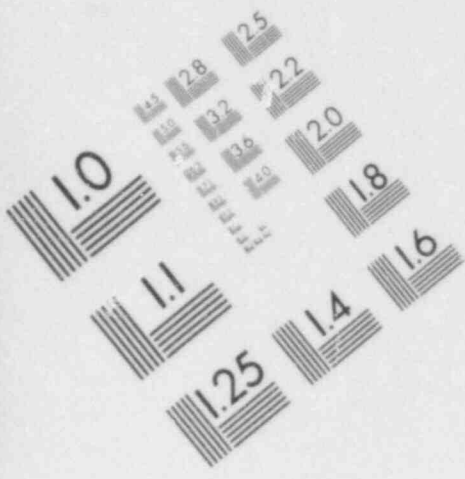
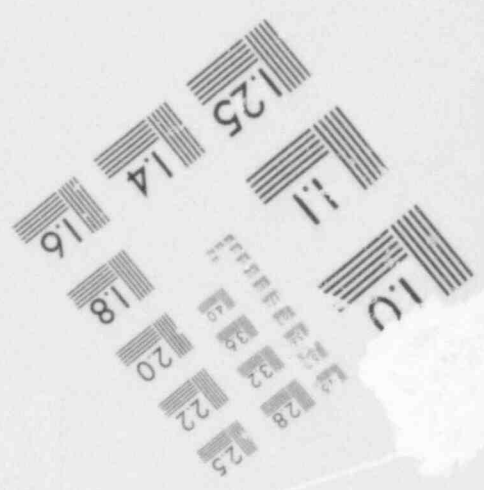
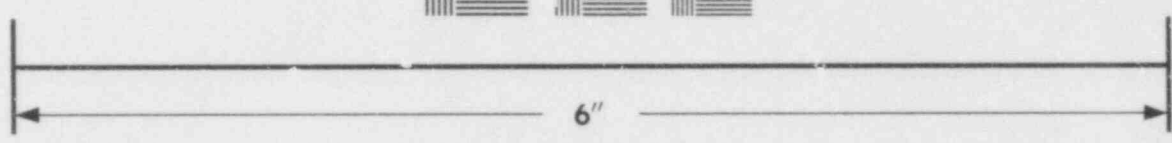
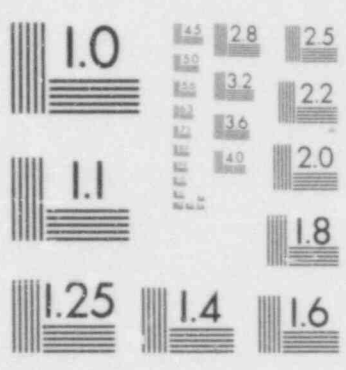
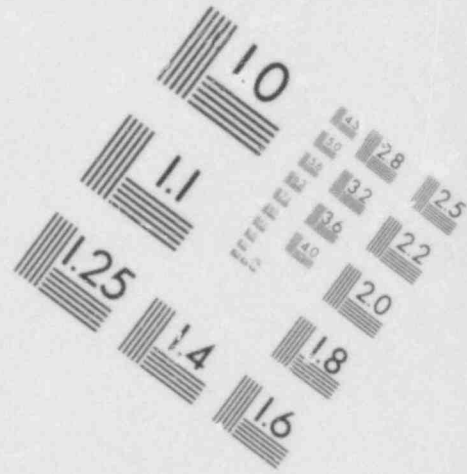
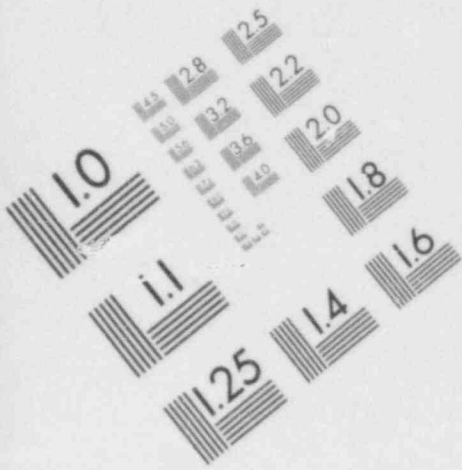
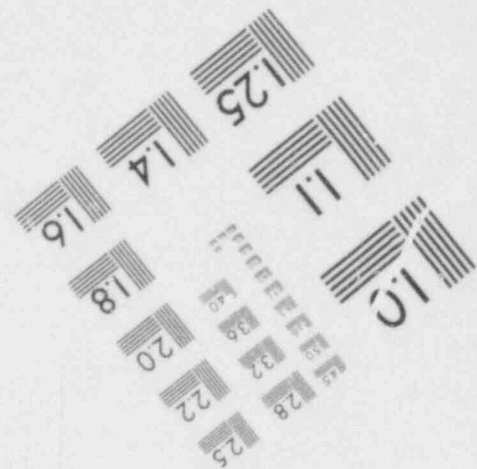
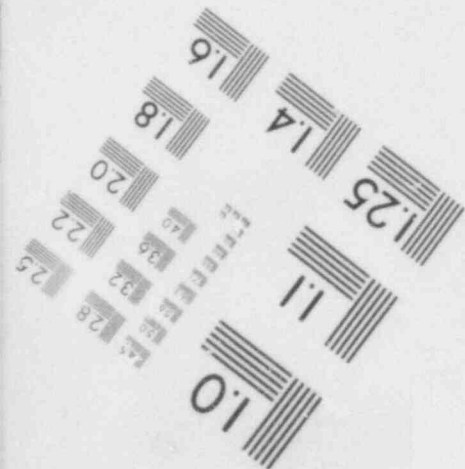
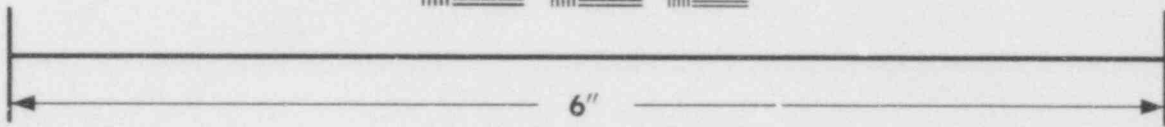


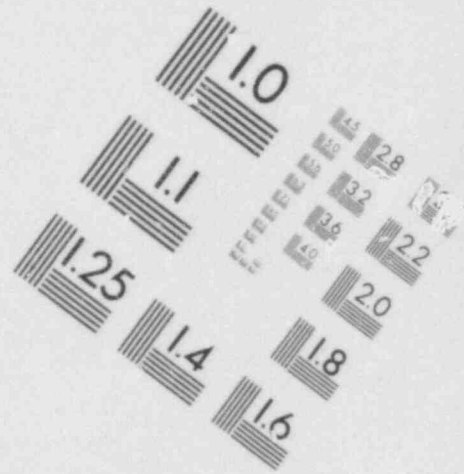
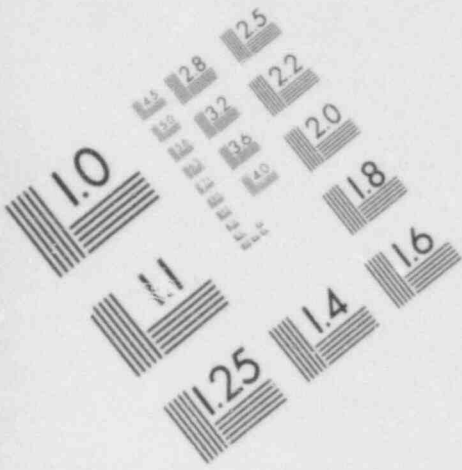
IMAGE EVALUATION
TEST TARGET (MT-3)



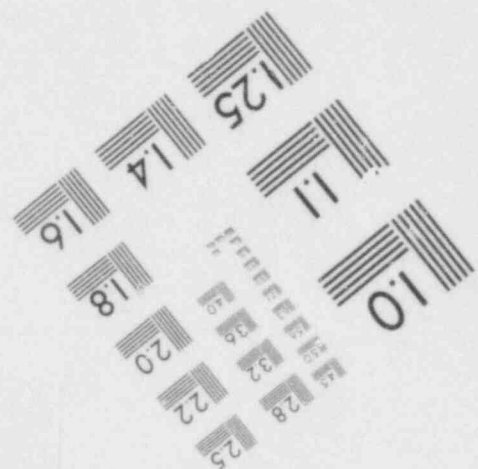
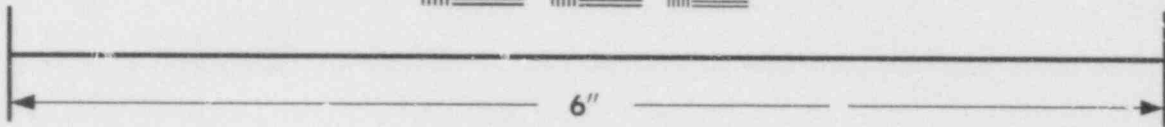
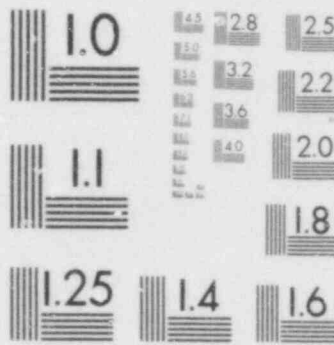


**IMAGE EVALUATION
TEST TARGET (MT-3)**





**IMAGE EVALUATION
TEST TARGET (MT-3)**



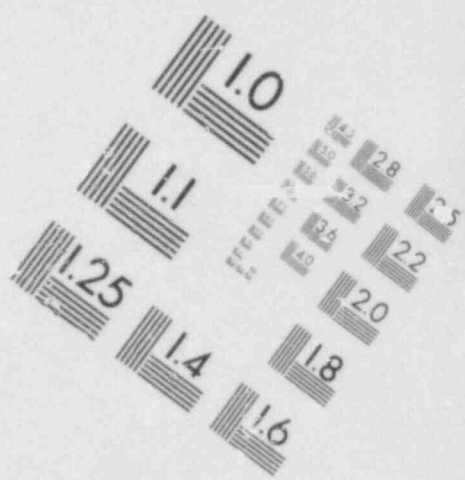
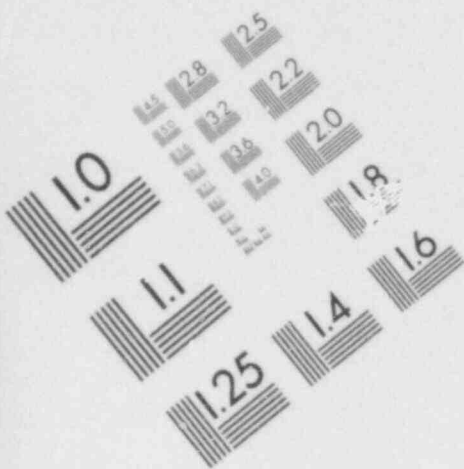
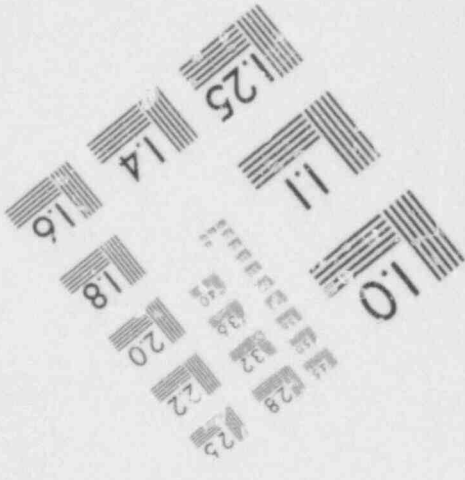
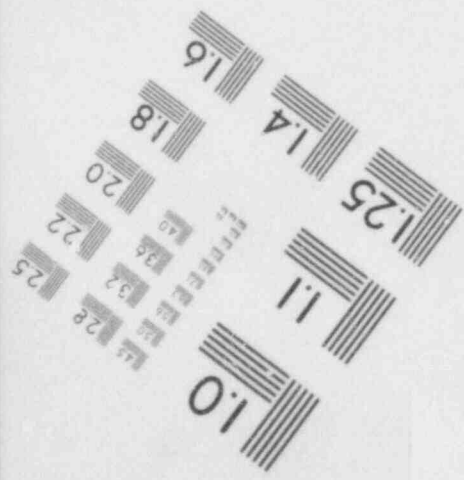
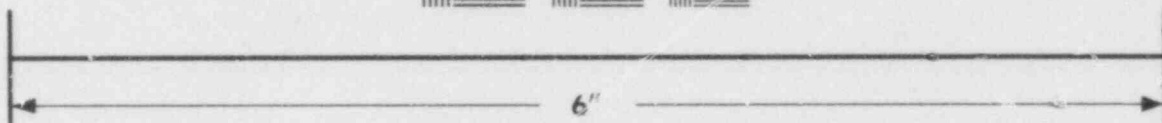
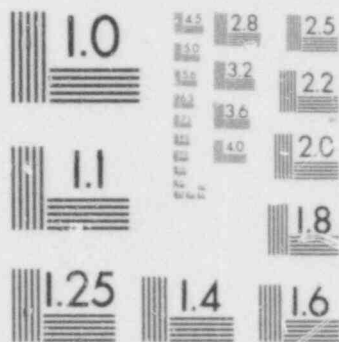


IMAGE EVALUATION
TEST TARGET (MT-3)



K.H.

8/1/78

To: R.E. Allen

Subj: TMI Unit I Chemical Instrumentation
+ Alarms

See Attached

If you have questions please call me

	132	50.0
—	135	76.0
		22.8
KR	85M	22.8 E+1
RT	88	600. E+2
T	131	81.5
Xe	133	449.3
I	133	143.8
Xe	135	246.6

1150 uci/ml

CALCULATION of TOTAL
ACTIVITY OF THE PREVIOUS 3/20 P.C.L.
→ OLD 140

229 001

336