

Photo No. Photo Description

Photo 1 Tree, brush, and debris removal operations from Argyle St. area, view facing east from Shelton Ave.

Photo 2 Tree, brush, and debris removal operations from Argyle St. area, view facing east from Shelton Ave.

Photo 3 Trench box prior to use in excavation operations

Photo 4 Trench box placed into excavation to allow personnel entry, view facing east along Argyle St.

Photo 5 Trench box placed into excavation, HP technician performing gamma walkover survey, view facing east along Argyle St.

Photo 6 ISOCS unit with lead brick enclosure to reduce background during measurements

Photo 7 ACM abatement tent set up above Utility Trench Section 1, east of southeast corner of Building 3H/6H, view facing south

Photo 8 Sump within Utility Trench Section 1, east-southeast of Building 3H/6H

Photo 9 Interior view of Utility Trench Section 1, east-southeast of Building 3H/6H

Photo 10 ACM roofing materials on X-Ray Read Room floor, view facing south

Photo 11 ACM containment constructed around X-Ray Read Room to abate ACM roofing materials, view facing southeast

Photo 12 Excavating soil out of a trench box, view facing west along Argyle St.

Photo 13 Abandoned sewer pipe encountered within Argyle St. excavation at Column 29

Photo 14 Abandoned sewer pipe encountered within Argyle St. excavation at Column 29

Photo 15 Abandoned sewer pipe encountered within Argyle St. excavation at Column 29

Photo 16 Excavating soil out of a trench box, view facing west along Argyle St.

Photo 17 Moving trench box east along Argyle St. to continue excavating to the east, view facing west

Photo 18 Excavating soil out of a trench box, view facing east along Argyle St.

Photo 19 Utility encountered within Argyle St. excavation

Photo 20 Interior view of Argyle St. sewer pipe at Column 29, contents visible, view facing west

Photo 21 Manhole encountered within Argyle St. excavation

Photo 22 Interior view of frac tank used for dewatering in South Trench

Photo 23 Abandoned sewer pipe segment encountered and removed within Argyle St. excavation

Photo 24 HP technician performing gamma survey of abandoned sewer pipe segment

Photo 25 Abandoned sewer pipe encountered within Argyle St. Excavation

Photo 26 Abandoned steel pipe encountered within Argyle St. excavation

Photo 27 Abandoned steel pipe encountered and removed within Argyle St. excavation

Photo 28 Abandoned steel pipe encountered within Argyle St. excavation

Photo 29 Polonium-210 sources contaminated with Americium-241 found inside Building 3H/6H

Photo 30 Natural gas pipeline encountered along edge of Argyle St. excavation

Photo 31 Natural gas pipeline encountered in Argyle St. excavation

Photo 32 Exposed natural gas pipeline running through Argyle St. excavation, view facing west

Photo No. Photo Description

- Photo 33 Exposed natural gas pipeline running through Argyle St. excavation, view facing south
- Photo 34 Storm sewer manhole encountered within Argyle St. excavation
- Photo 35 Soil removal operations around exposed natural gas pipeline within Argyle St. excavation
- Photo 36 Exposed natural gas pipeline running through Argyle St. excavation, view facing west
- Photo 37 Continued excavation operations around natural gas pipeline in Argyle St. excavation, storm sewer manhole removed from excavation, view facing west
- Photo 38 Relocating trench boxes in support of Argyle St. excavation operations, view facing north
- Photo 39 Continued soil excavation from within trench box along Argyle St., view facing west
- Photo 40 Continued soil excavation from within trench box along Argyle St., view facing west
- Photo 41 HP technician performing gamma walkover survey of Argyle St. excavation floor
- Photo 42 Exposed natural gas pipeline running through Argyle St. excavation, intermodal container west of excavation, view facing west
- Photo 43 Backfilled portions of Argyle St. excavation, natural gas pipeline visible in middle of backfilled area, view facing west
- Photo 44 Fencing removed from Mr. Copeland's property, adjacent to south side of 71 Shelton Ave., view facing southwest
- Photo 45 Water leaking into Argyle St. excavation from active water main
- Photo 46 Water streaming from leaking water main within Argyle St. excavation, view facing west
- Photo 47 Water accumulation in Argyle St. excavation from active water main, view facing west
- Photo 48 Water accumulation in Argyle St. excavation from active water main, view facing west
- Photo 49 Excavated portion of water main pipe where shut-off valve will be installed
- Photo 50 Excavated portion of water main pipe with shut-off valve installed
- Photo 51 Dewatering operations to drain water from Argyle St. excavation into frac tank (frac tank not pictured), view facing west
- Photo 52 Dewatering standing water within trench box within Argyle St. excavation, view facing southwest
- Photo 53 Dewatering standing water within trench box within Argyle St. excavation, view facing east
- Photo 54 Abandoned pipe segment to be removed from within Argyle St. excavation
- Photo 55 Traffic management in Shelton Ave. during asphalt-cutting operations in Shelton Ave., view facing south
- Photo 56 Asphalt-cutting operations in Shelton Ave., view facing southwest
- Photo 57 Removed asphalt in Shelton Ave. in preparation for removing sewer line below, view facing south
- Photo 58 Drainage hole within Utility Trench Section 2/South Utility Trench Section 2, Ludlum 43-93 detector for scale
- Photo 59 Excavating overburden soil from Shelton Ave. excavation; overburden soil loaded into triaxle dump truck, view facing north
- Photo 60 Storm sewer manhole and structures removed from excavation within Shelton Ave., view facing south
- Photo 61 Drainage hole measured at approx. 5.5 inches depth using tape measure

Photo No. Photo Description

- Photo 62 Interior view of abandoned Shelton Ave. sewer pipe before pipe flushing
- Photo 63 View of abandoned Shelton Ave. sewer pipe looking west
- Photo 64 View of insertion of video camera into exposed end of abandoned pipe under Shelton Avenue to determine length, path, and condition of pipe
- Photo 65 Geoprobe 6620DT direct push drill rig in use to collect subsurface soil samples from within Laydown Area, view facing southeast
- Photo 66 Excavation to install replacement sewer line from Manhole #1 to Manhole #2
- Photo 67 Excavation to install replacement sewer line from Manhole #1 to Manhole #2
- Photo 68 Continued remedial operations within Argyle St. excavation, view facing east
- Photo 69 Sewer pipe replacement operations within Argyle St. excavation, view facing west
- Photo 70 Gas company representatives on-site to replace gas main valve damaged during sewer replacement operations, view facing west
- Photo 71 Replaced gas main valve damaged during sewer replacement operations
- Photo 72 Continued backfilling operations within Argyle St. excavation, view facing west
- Photo 73 Continued backfilling operations within Argyle St. excavation, view facing west
- Photo 74 Argyle St. Sewer plug removed at the end of the sewer at Column 42
- Photo 75 Removing polyplastic sheeting and gravel fill within Decon. Pit, view facing south
- Photo 76 Excavating within Decon. Pit, view facing south
- Photo 77 Pipes within North Utility Trench, view facing west
- Photo 78 Pipes within North Utility Trench, view facing west
- Photo 79 Excavated pipe chase adjacent to Decon. Pit on southern side
- Photo 80 X-Ray Read Room South Excavation progress with adjacent ACM abatement containment, view facing southwest
- Photo 81 X-Ray Read Room South Excavation progress with adjacent ACM abatement containment, view facing south
- Photo 82 Excavated pipe chase adjacent to Decon. Pit on southern side, view facing east
- Photo 83 Excavated pipe chase adjacent to Decon. Pit on southern side, view facing north
- Photo 84 Excavation operations within X-Ray Read Room North Excavation, large concrete equipment footer exposed, view facing southeast
- Photo 85 Large concrete equipment footer exposed within X-Ray Read Room North Excavation, view facing southeast
- Photo 86 Large concrete equipment footer exposed within X-Ray Read Room North Excavation, view facing south
- Photo 87 Storm sewer line extending west underneath Shelton Ave. prior to installation of catch basin, view facing west
- Photo 88 Storm sewer line extending west underneath Shelton Ave. following installation of catch basin, view facing southwest
- Photo 89 Concrete manhole to be installed in replacement sewer line in Argyle St. at Column 41

Photo No. Photo Description

Photo 90 Replacement manhole installed in Argyle St. sewer line

Photo 91 Backfilled and graded soil within Argyle St. excavation area, view facing east

Photo 92 Backfilled and graded soil within Argyle St. excavation area, view facing west

Photo 93 Residual radioactivity discovered in Haul Road area east of Building 3H/6H covered by gravel, view facing southeast

Photo 94 Sidewalk and driveway replacement on Mr. Copeland's property, adjacent to south side of 71 Shelton Ave., view facing southeast

Photo 95 Chipping wood cleared from Argyle St. area prior to excavation operations

Photo 96 Repaved area where sewer was replaced along Shelton Ave., view facing south

Photo 97 Ongoing restoration efforts on Mr. Copeland's property, adjacent to south side of 71 Shelton Ave., view facing southeast

Photo 98 ACM abatement containment and drums in X-Ray Read Room

Photo 99 Equipment present within X-Ray Read Room southeast of X-Ray Read Room South Excavation, view facing south

Photo 100 Equipment present within X-Ray Read Room southeast of X-Ray Read Room South Excavation, view facing southwest

Photo 101 Hydraulic hammer in use to demolish large concrete footer within X-Ray Read Room North Excavation, view facing southwest

Photo 102 Hydraulic hammer in use to rubbelize concrete footer debris within X-Ray Read Room North Excavation, view facing southeast

Photo 103 X-Ray Read Room North Excavation following removal of concrete footer debris, view facing east

Photo 104 X-Ray Read Room North Excavation following removal of concrete footer debris

Photo 105 Spray paint lines to delineate portions of Laydown Area to be excavated, view facing northeast

Photo 106 Spray paint lines to delineate portions of Laydown Area to be excavated, view facing east

Photo 107 Spray paint lines to delineate portions of Laydown Area to be excavated, view facing west

Photo 108 Hydraulic hammer in use to break up asphalt within Laydown Area, view facing northeast

Photo 109 Excavation progress within Laydown Area East Excavation, view facing northeast

Photo 110 Excavation progress within Laydown Area West Excavation, brick structure visible in north and northwest walls of excavation, view facing west

Photo 111 Excavation progress within Laydown Area West Excavation, brick structure visible in north and northwest walls of excavation, view facing northwest

Photo 112 Excavation progress within Laydown Area Excavations, brick structure visible in east wall of West Excavation, East excavation visible in background, view facing east

Photo 113 Excavation progress within Laydown Area West Excavation, brick structure visible in north wall of excavation, view facing north

Photo No. Photo Description

- Photo 114 Concrete-cutting operations of floor within Decon. Pit to expand remediation footprint to the east, view facing east
- Photo 115 Standing water present within Building 3H/6H during rainy conditions, view facing west
- Photo 116 Excavation progress within Decon. Pit, jackhammer in use to break up second pour concrete floor underlying top pour, view facing east
- Photo 117 Excavation progress in X-Ray Read Room North Excavation, South Excavation in background, view facing south
- Photo 118 Entry into South Utility Trench
- Photo 119 Construction progress on garage on Mr. Copeland's property, framing completed, adjacent to south side of 71 Shelton Ave., view facing east
- Photo 120 Pipes and loose ACM in South Utility Trench prior to ACM abatement
- Photo 121 Excavation progress within Decon. Pit, note enlarged footprint of removed concrete floor, view facing east
- Photo 122 Excavation progress within Decon. Pit
- Photo 123 Ongoing structural investigation within Building 3H/6H, view facing west
- Photo 124 Backfilled and compacted floor of X-Ray Read Room North Excavation, view facing east-southeast
- Photo 125 Construction progress on garage on Mr. Copeland's property, house wrap installed, adjacent to south side of 71 Shelton Ave., view facing east
- Photo 126 Excavation progress within Decon. Pit, note depth of approximately 9.5 feet below grade on survey rod, view facing south
- Photo 127 Construction progress on garage on Mr. Copeland's property, vinyl siding installed, adjacent to south side of 71 Shelton Ave., view facing east
- Photo 128 Trench excavated adjacent to X-Ray Read Room North Excavation foundation wall, view facing east
- Photo 129 Flowable concrete fill installed adjacent to foundation wall in X-Ray Read Room North Excavation, view facing east
- Photo 130 Foam insulation sheets installed over concrete in X-Ray Read Room North Excavation, view facing east
- Photo 131 X-Ray Read Room North Excavation following backfill and compaction, view facing east
- Photo 132 X-Ray Read Room North Excavation following additional backfill and compaction in preparation for soil removal in X-Ray Read Room South Excavation, view facing east
- Photo 133 Gap in door seal for IMC GFLU 2184, taken at EnergySolutions
- Photo 134 Broken up concrete floor overlying pipe chase east of X-Ray Read Room North Excavation, view facing east
- Photo 135 Excavation progress within X-Ray Read Room South Excavation, view facing east
- Photo 136 Excavation progress within Laydown Area West Excavation, excavation has continued north of brick structure (left side of picture), East excavation visible in background, view facing east
- Photo 137 Excavation dug near northwest corner of 71 Shelton Ave. property as part of effort to locate 91 Shelton Ave. water suppression system pressure loss, view facing northwest
- Photo 138 Garden hose used to connect six and eight inch water lines near northwest corner of 71 Shelton Ave. property

Photo No. Photo Description

Photo 139 Valves installed in existing piping servicing 91 Shelton Ave.

Photo 140 Demolition of block wall separating the North and South Excavations of the X-Ray Read Room, view facing southeast

Photo 141 New connection to 91 Shelton Ave. waterline from southside of 71 Shelton Ave. property (Argyle St. side), view facing north

Photo 142 New valve installed in waterline in northeast portion of 71 Shelton Ave. property, view facing west

Photo 143 Excavation progress within Laydown Area West Excavation, East excavation visible in background, view facing east

Photo 144 Excavation progress within Laydown Area West Excavation, view facing northeast

Photo 145 Hydraulic hammer attachment installed onto John Deere 85D excavator

Photo 146 Breaking up floors east of X-Ray Read Room South Excavation using jackhammer, view facing south

Photo 147 Breaking up floors east of X-Ray Read Room South Excavation using John Deere 85D excavator with breaker attachment, view facing south

Photo 148 Confirming continuity of water line from northwest portion of Shelton Ave to 99-107 Shelton Ave. using blue tracer dye, view facing northeast

Photo 149 Demolishing concrete structure within Laydown Area West Excavation, view facing north

Photo 150 Rerouted active waterline east to 91 Shelton Ave. fire suppression system, view facing north

Photo 151 Excavation backfilling near northwest corner of 71 Shelton Ave. property as part of effort to locate 91 Shelton Ave. water suppression system pressure loss, view facing southwest

Photo 152 Water lines being cut and rerouted in northwest portion of 71 Shelton Ave. property to service Building 52, view facing east

Photo 153 Systematic sample locations within Decon. Pit excavation, view facing east

Photo 154 New fence posts installed on Mr. Copeland's property adjacent to south side of 71 Shelton Ave., view facing east

Photo 155 Replaced fence on Mr. Copeland's property adjacent to south side of 71 Shelton Ave., view facing west

Photo 156 Replaced fence on Mr. Copeland's property adjacent to south side of 71 Shelton Ave., view facing east

Photo 157 Excavation progress within X-Ray Read Room South Excavation, view facing west

Photo 158 Excavation progress within X-Ray Read Room South Excavation, view facing east

Photo 159 Quarter-inch thick 4' x 8' steel sheets being off-loaded in bundles of eight

Photo 160 HP technician performing gamma walkover survey on floor of X-Ray Read Room South Excavation

Photo 161 Excavation progress within X-Ray Read Room South Excavation, view facing west

Photo 162 Excavation progress in Haul Road area, view facing east

Photo 163 Excavation progress within Laydown Area West Excavation, expanded soil remediation in northeast corner of Laydown Area excavation, East excavation visible in background, view facing east

Photo 164 Systematic grids drawn on walls with South Utility Trench Section 5; view facing east

Photo No. Photo Description

- Photo 165 Steel sheets cut to size to cover South Utility Trench access holes in concrete floors
- Photo 166 Drilling holes in concrete floor of building 3H/6H with electric concrete core drill
- Photo 167 Expanded remediation footprint along western edge of Laydown Area West Excavation, view facing west
- Photo 168 Excavation progress in Haul Road area, view facing northwest
- Photo 169 Pin flags noting investigative sample locations along north sidewall of X-Ray Read Room South Excavation, view facing west
- Photo 170 Compact direct push coring equipment used to install monitoring wells, location unc-mw-05 shown, view facing northeast
- Photo 171 Laydown Area East Excavation backfilled, view facing northeast
- Photo 172 Backfilling progress with Decon. Pit, view facing east
- Photo 173 Continued cutting and welding of steel plates and "L" angle pieces to cover South Utility Trench access holes
- Photo 174 Steel plate covering access hole in concrete floor, view facing south
- Photo 175 ISOCs measurement on western sidewall of Laydown Area West Excavation, view facing west
- Photo 176 Backfilling progress in eastern end of Laydown Area West Excavation, view facing east
- Photo 177 Groundwater sampling of monitoring well UNC-MW-09
- Photo 178 Decon. Pit following backfill and compaction, view facing east
- Photo 179 Adjusted height of gate for fence on Mr. Copeland's property adjacent to south side of 71 Shelton Ave., view facing southeast
- Photo 180 Added topsoil adjacent to sidewalk on Mr. Copeland's property adjacent to south side of 71 Shelton Ave., view facing east
- Photo 181 DOT-compliant labelling on intermodal container GFLU 2195 containing mixed hazardous waste
- Photo 182 Technician adding grass seed to topsoil on Mr. Copeland's property adjacent to south side of 71 Shelton Ave., view facing east
- Photo 183 Elevated area located on floor in southeast corner of Decon. Pit, view facing southeast
- Photo 184 Steel plate installed to cover hole in floor of Building 3H/6H east of X-Ray Read Room South Excavation
- Photo 185 Steel plate installed to cover hole in floor of Building 3H/6H between Columns 28 and 29
- Photo 186 HP technician performing ISOCs measurement of remediated northeast corner of concrete pad in Haul Road area, view facing southeast
- Photo 187 Containment and negative air unit set up for concrete scabbling work to be performed in Decon. Pit Room Floor, view facing east
- Photo 188 Wire mesh placed into backfilled pipe chase immediate south of Decon. Pit in preparation for pouring of new concrete floor, view facing east
- Photo 189 Backfilling progress within Laydown Area West Excavation, view facing east
- Photo 190 Backfilling progress within Laydown Area West Excavation, view facing north

Photo No. Photo Description

- Photo 191 Backfilled Haul Road area excavation, view facing east
- Photo 192 Piping within Column 17/18 Lateral Utility Trench prior to ACM abatement, view facing north
- Photo 193 Backfilled Laydown Area West Excavation, view facing east
- Photo 194 Components of decontaminated scabbler
- Photo 195 Laydown Area with 3/4" processed stone to be spread over backfilled area, view facing east
- Photo 196 Collapsed dry well cover, view facing west
- Photo 197 Concrete floor in southeast corner of Decon. Pit post-scabbling, view facing south
- Photo 198 Newly-poured concrete floor in Decon. Pit, view facing east
- Photo 199 Backfilled and compacted dry well with collapsed concrete collar, view facing east
- Photo 200 Soil removed from entry way to Decon. Pit, view facing east
- Photo 201 Relocated materials east of X-Ray Read Room South Excavation where geoprobe locations will be sampled, view facing east
- Photo 202 Boreholes drilled east of X-Ray Read Room South Excavation, view facing north
- Photo 203 Boreholes drilled east of X-Ray Read Room South Excavation, view facing north
- Photo 204 Boreholes drilled east of X-Ray Read Room South Excavation, view facing north
- Photo 205 PVC pipes installed into boreholes drilled east of X-Ray Read Room South Excavation, view facing east
- Photo 206 PVC pipes installed into boreholes drilled through pipe chase east of X-Ray Read Room North Excavation, view facing east
- Photo 207 Additional PVC pipes installed into boreholes drilled east of X-Ray Read Room east wall, view facing south
- Photo 208 Backfilled Haul Road area, view facing north
- Photo 209 Low-flow groundwater sampling at monitoring well UNC-MW-09, view facing northwest
- Photo 210 Pipes being cut in the process of ACM abatement in North Trench
- Photo 211 Collecting waste characterization samples from frac tank
- Photo 212 Concrete floor of South Utility Trench cut up in preparation for removal and soil sampling beneath floor
- Photo 213 Layout of sample locations from soil beneath South Utility Trench concrete floor at approx. Column 40, north wall of South Trench at bottom of photo
- Photo 214 Void space underneath north wall of drainage hole in South Utility Trench at approx. Column 40
- Photo 215 Void space underneath north wall of drainage hole in South Utility Trench at approx. Column 40
- Photo 216 View into South Utility Trench access hole from Building 3H/6H ground floor east of X-Ray Read Room South Excavation
- Photo 217 Pouring bentonite chips down UNC-MW-09 as part of well abandonment procedure, view facing east
- Photo 218 ACM abatement technician in Level C PPE collecting ACM samples from Column 17/18 Lateral Utility Trench
- Photo 219 Systematic grids have been drawn and are visible on the west wall and the floor of Column 17/18 Lateral Utility Trench, view facing north

Photo No. Photo Description

- Photo 220 Pneumatic chipping hammer utilized for concrete demolition free released
- Photo 221 Small pipe chase at approx. Column 33 extending north from South Utility Trench, view facing north
- Photo 222 Interior of North Utility Trench at Column 28, light is visible from ACM abatement work at Column 18 in background, vertical clearance between floor or trench and overhead pipes is approx. 24 inches, view facing west
- Photo 223 Interior of North Utility Trench at Column 29 where floor height steps up to yield trench dimensions of four feet width by two feet height, view facing east
- Photo 224 Cleared area surrounding North Utility Trench access point inside Building 3H/6H between Columns 25 and 26, view facing north wall
- Photo 225 Additional topsoil and grass seed applied to area immediately west of 91 Shelton Ave., view facing north
- Photo 226 Systematic grids on east wall of Column 17/18 Lateral Trench, view facing north-northeast
- Photo 227 New serial connector installed on truck scale
- Photo 228 Debris pile removed and area powerwashed to allow access to North Utility Trench access hatch inside Building 3H/6H along north wall between Columns 25 and 26, wooden supports for containment nailed to floor around access hatch, view facing west
- Photo 229 Relocated position of debris pile along southern interior wall of Building 3H/6H, view facing southwest
- Photo 230 Construction progress on new ACM containment within Building 3H/6H between Columns 25 and 27, view facing north
- Photo 231 ACM abatement containment established around North Utility Trench access hole within Building 3H/6H at Column 4, view facing northeast
- Photo 232 ACM abatement containment established around North Utility Trench access hole within Building 3H/6H at Column 4, view facing northwest
- Photo 233 Geotextile fabric placed over impacted portions of the X-Ray Read Room South Excavation floor prior to backfilling, view facing west
- Photo 234 Geotextile fabric placed over impacted portions of the X-Ray Read Room South Excavation floor prior to backfilling, view facing east
- Photo 235 Milling of asphalt on Shelton Ave., view facing north
- Photo 236 Milling of asphalt on Shelton Ave., view facing south
- Photo 237 Milling of asphalt on Shelton Ave., view facing southwest
- Photo 238 Milling of asphalt on Shelton Ave., view facing west
- Photo 239 Milling of asphalt on Shelton Ave., view facing northwest
- Photo 240 Milling of asphalt on Shelton Ave., view facing west
- Photo 241 Repaved asphalt in front of 71 Shelton Ave., view facing south
- Photo 242 Repaved asphalt in front of 71 Shelton Ave., view facing north
- Photo 243 Geotextile fabric installed on top of backfilled X-Ray Read Room South Excavation prior to placing layer of gravel

Photo No. Photo Description

- Photo 244 Scabbling the south concrete wall of the X-Ray Read Room pipe chase, view facing southeast
- Photo 245 Scabbling the south concrete wall of the X-Ray Read Room pipe chase, view facing southwest
- Photo 246 Scabbling progress of the south concrete wall of the X-Ray Read Room pipe chase, view facing south
- Photo 247 Fence post at Shelton Ave. entrance to 71 Shelton Ave. damaged and not plumb, view facing north
- Photo 248 Fence post at Shelton Ave. entrance to 71 Shelton Ave. repaired and plumb, view facing north
- Photo 249 ISOCS measurement on elevated area of X-Ray Read Room floor
- Photo 250 Top layer of gravel backfill placed on X-Ray Read Room South Excavation, view facing west
- Photo 251 Systematic grids are visible on floor and walls within North Utility Trench towards end of ACM containment at Column 4, view facing west
- Photo 252 Systematic grids are visible on floor and walls within North Utility Trench, view facing east
- Photo 253 Exterior of sandblasting containment within X-Ray Read Room, view facing southeast
- Photo 254 HP technician performing radioactivity measurements to measure progress of sandblasting decontamination operations inside sandblasting containment within X-Ray Read Room
- Photo 255 Discrete areas requiring additional remediation outlined in black spray paint illustrating progress of sandblasting decontamination operations inside sandblasting containment within X-Ray Read Room
- Photo 256 Backfilled X-Ray Read Room South Excavation prior to placing layer of geotextile fabric, view facing west
- Photo 257 Grading operations on Argyle St., view facing east
- Photo 258 Grading operations on Argyle St., view facing west
- Photo 259 Removing elevated area from floor of X-Ray Read Room using electric concrete core drill
- Photo 260 Removing elevated area from floor of X-Ray Read Room using electric concrete core drill
- Photo 261 Decontaminated south concrete wall of the X-Ray Read Room pipe chase following sandblasting operations, view facing south
- Photo 262 Backfilled X-Ray Read Room pipe chase, view facing southeast
- Photo 263 Backfilled X-Ray Read Room pipe chase, view facing east
- Photo 264 Vacuum truck removing wastewater from frac tank for off-site disposal, view facing northeast
- Photo 265 Newly-poured concrete floor over X-Ray Read Room South Excavation, view facing west
- Photo 266 Repaved Argyle Street area adjacent to Mr. Copeland's property, adjacent to south side of 71 Shelton Ave., view facing east
- Photo 267 Asphalt set around manhole set into Argyle Street, view facing north
- Photo 268 Asphalt set around manhole set into Argyle Street, view facing west of entire repaved area

Photo 1

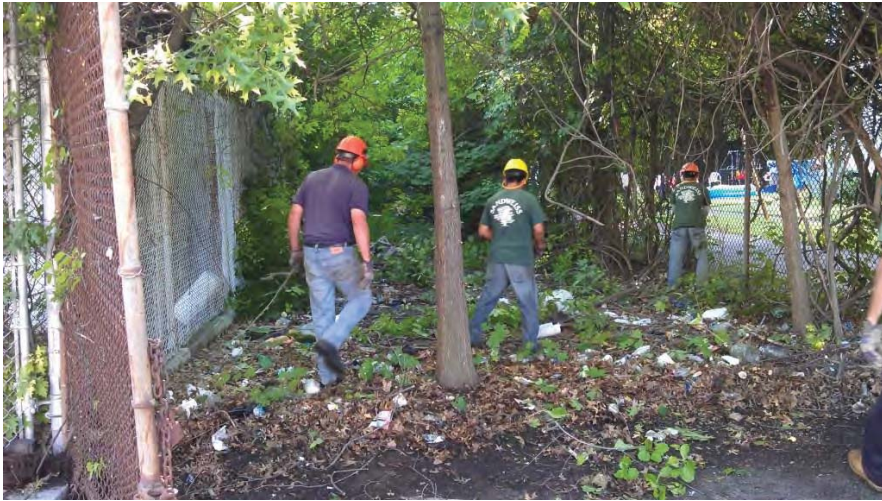


Photo 2

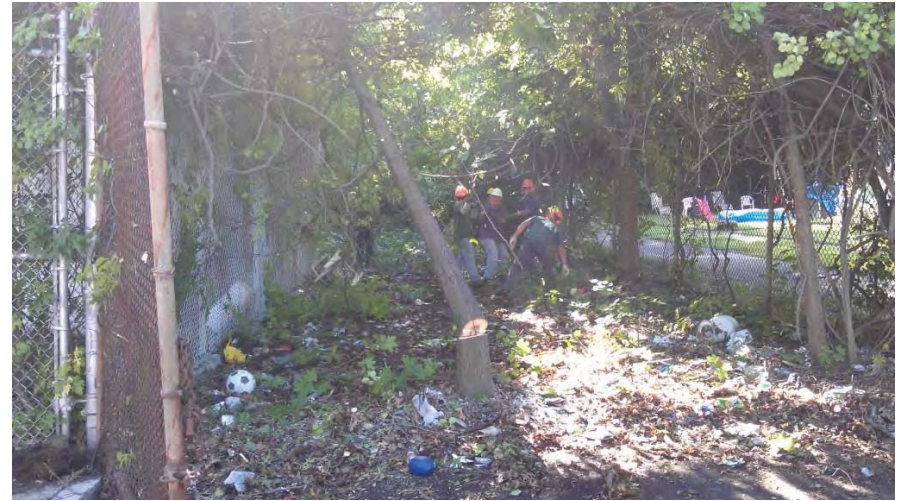


Photo 3



Photo 4



Photo 5



Photo 6



Photo 7



Photo 8



Photo 9



Photo 10



Photo 11



Photo 12



Photo 13



Photo 14



Photo 15



Photo 16

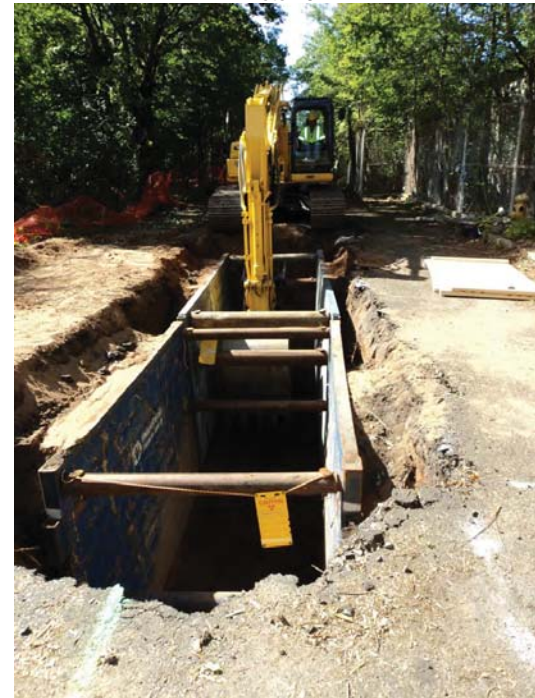


Photo 17



Photo 18



Photo 19



Photo 20



Photo 21



Photo 22



Photo 23



Photo 24



Photo 25



Photo 26



Photo 27



Photo 28



Photo 29



Photo 30



Photo 31



Photo 32



Photo 33



Photo 34



Photo 35



Photo 36



Photo 37



Photo 38



Photo 39



Photo 40



Photo 41



Photo 42



Photo 43



Photo 44



Photo 45



Photo 46



Photo 47



Photo 48



Photo 49



Photo 50



Photo 51



Photo 52



Photo 53



Photo 54



Photo 55



Photo 56



Photo 57



Photo 58



Photo 59



Photo 61



Photo 62



Photo 63



Photo 64



Photo 65



Photo 66



Photo 67



Photo 68



Photo 69



Photo 70



Photo 71



Photo 72



Photo 73



Photo 74



Photo 75



Photo 76



Photo 77



Photo 78



Photo 79



Photo 80



Photo 81



Photo 82



Photo 83

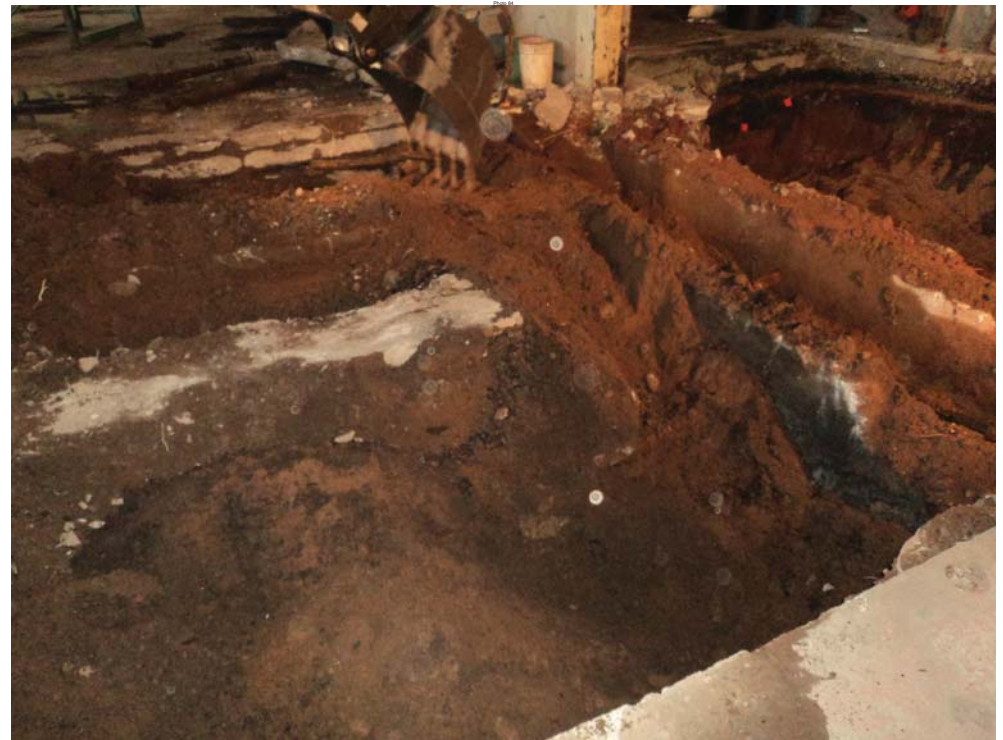


Photo 85



Photo 86



Photo 87



Photo 88



Photo 89



Photo 90



Photo 91



Photo 92



Photo 93



Photo 94



Photo 95



Photo 96



Photo 97



Photo 98



Photo 99



Photo 100



Photo 101



Photo 102



Photo 103



Photo 104



Photo 105



Photo 106



Photo 107



Photo 108



Photo 109



Photo 110



Photo 111



Photo 112



Photo 113



Photo 114



Photo 115



Photo 116



Photo 117



Photo 118



Photo 119



Photo 120



Photo 121



Photo 122



Photo 123

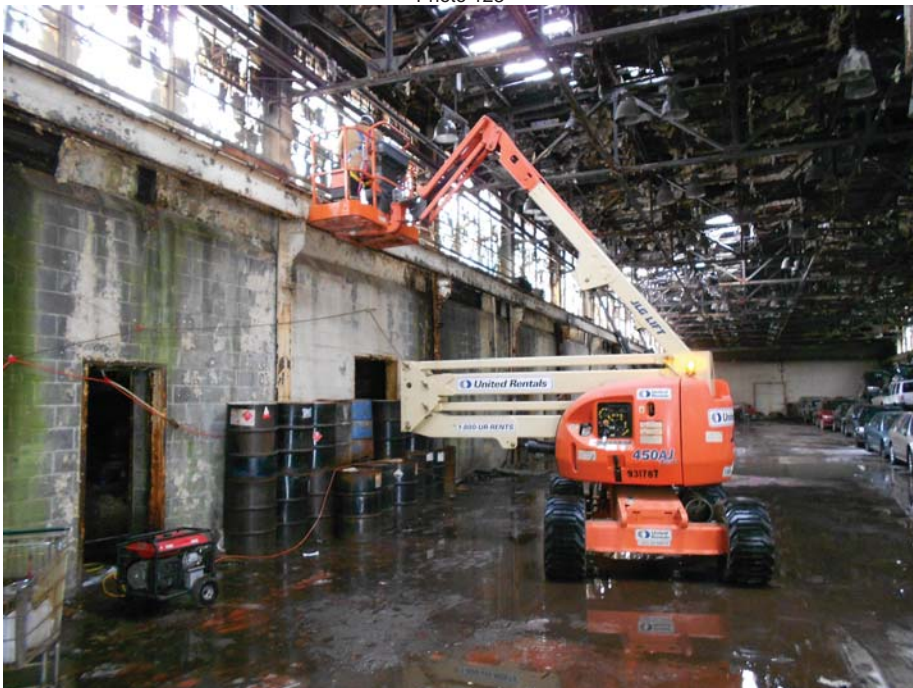


Photo 124



Photo 125



Photo 126



Photo 127



Photo 128



Photo 129



Photo 130



Photo 131



Photo 132



Photo 133



Photo 134



Photo 135



Photo 136



Photo 137



Photo 138



Photo 139



Photo 140

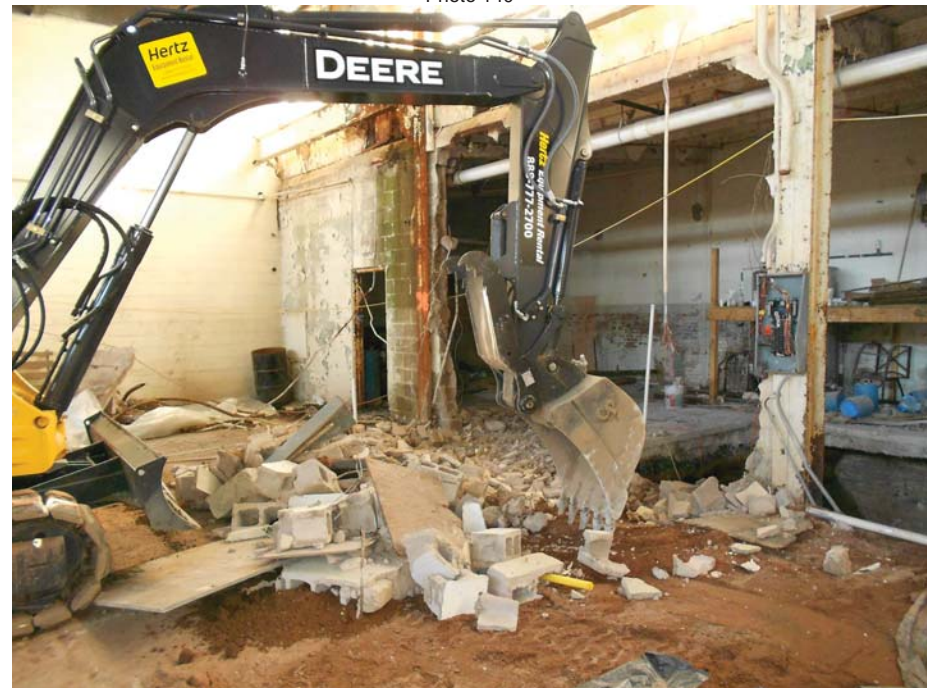


Photo 141



Photo 142



Photo 143



Photo 144



Photo 145



Photo 146



Photo 147

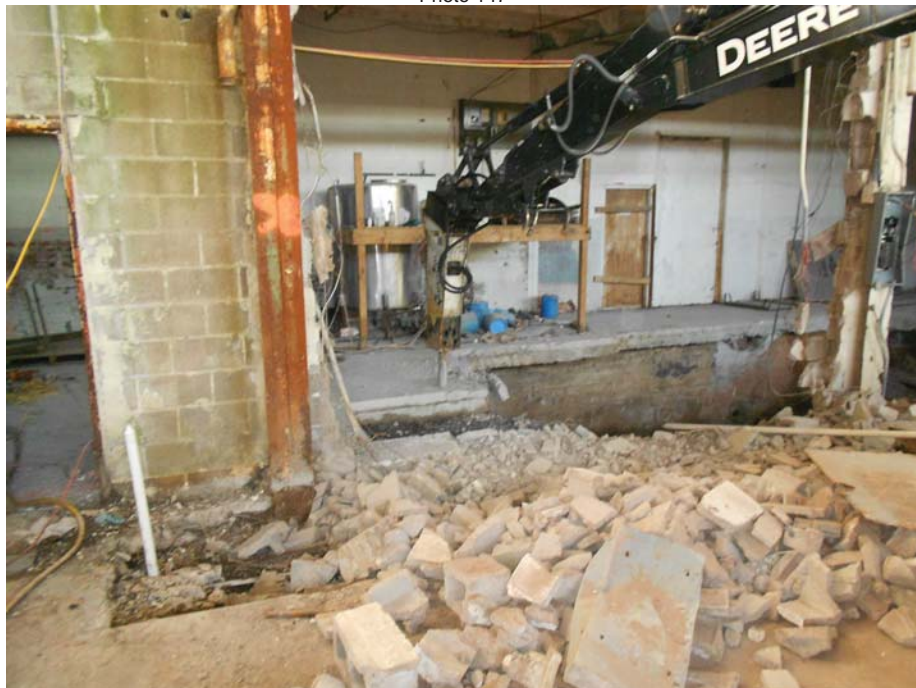


Photo 148



Photo 149



Photo 150



Photo 151



Photo 152



Photo 153



Photo 154



Photo 155



Photo 156



Photo 157



Photo 158



Photo 160



Photo 159



Photo 161



Photo 162



Photo 163



Photo 164



Photo 165



Photo 166



Photo 167



Photo 168



Photo 169



Photo 170



Photo 171



Photo 172



Photo 173



Photo 174

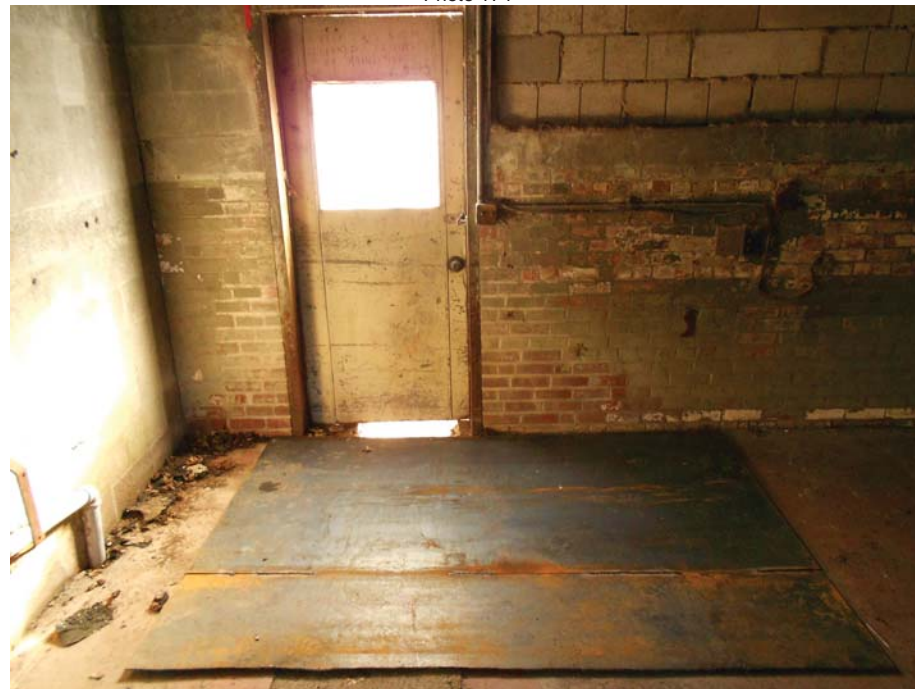


Photo 175



Photo 176



Photo 177



Photo 178



Photo 179



Photo 180



Photo 181



Photo 182



Photo 183



Photo 184



Photo 185



Photo 186



Photo 187



Photo 188



Photo 189



Photo 190



Photo 191



Photo 192



Photo 193



Photo 194



Photo 195



Photo 196



Photo 197



Photo 198



Photo 199



Photo 200



Photo 201



Photo 202



Photo 203



Photo 204



Photo 205



Photo 206



Photo 207



Photo 208

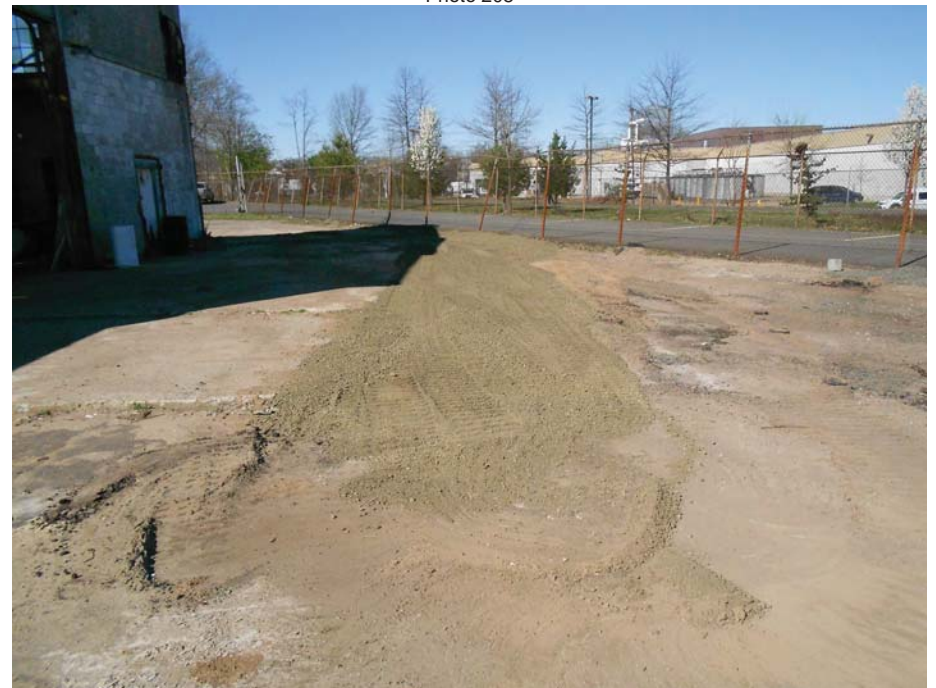


Photo 209



Photo 210



Photo 211



Photo 212



Photo 213



Photo 214



Photo 215



Photo 216



Photo 217



Photo 218



Photo 219



Photo 220



Photo 221



Photo 222



Photo 223



Photo 224



Photo 225



Photo 226



Photo 227



Photo 228



Photo 229



Photo 230

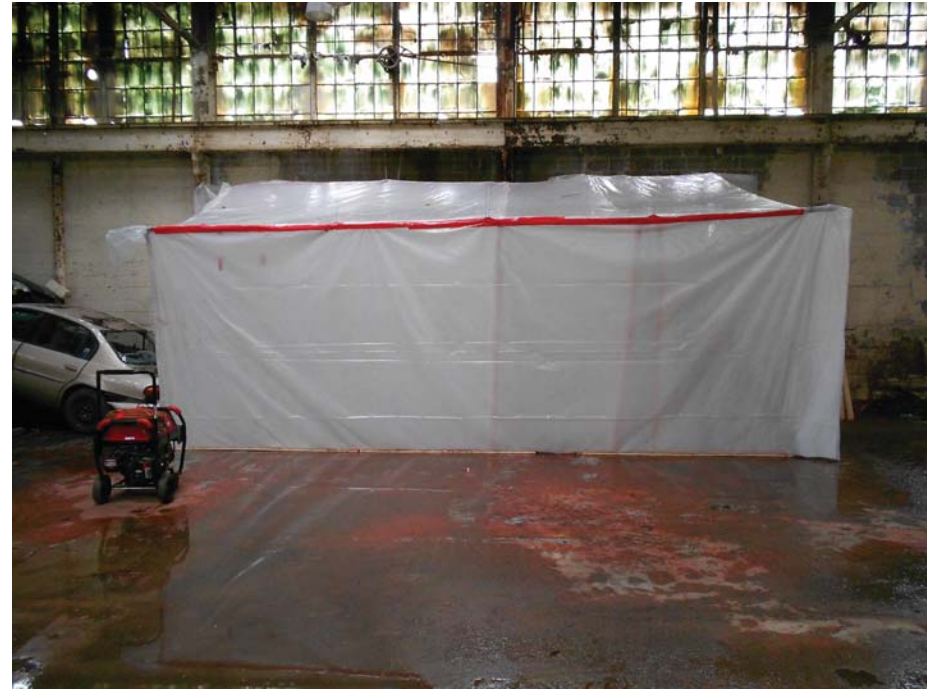


Photo 231



Photo 232



Photo 233



Photo 234



Photo 235

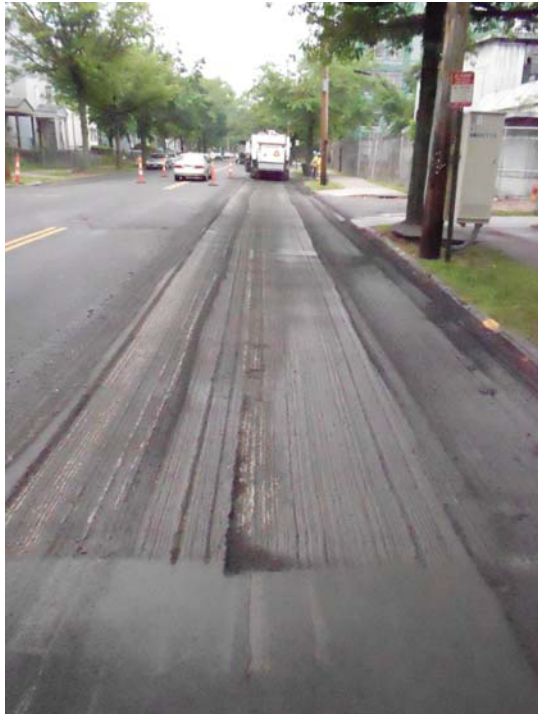


Photo 236



Photo 237



Photo 238



Photo 239



Photo 240



Photo 241



Photo 242



Photo 243



Photo 244



Photo 245



Photo 246



Photo 247

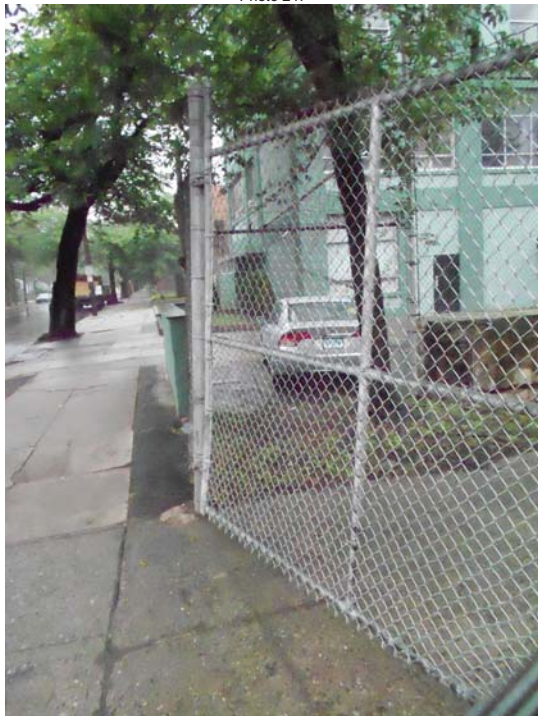


Photo 248



Photo 249



Photo 250



Photo 251



Photo 252



Photo 253



Photo 254



Photo 255



Photo 256



Photo 257



Photo 258



Photo 259



Photo 260



Photo 261



Photo 262



Photo 263



Photo 264



Photo 265



Photo 266



Photo 267



Photo 268

